



 **Kumamoto University**

2023-2024

Table of Contents

1 Introduction	0 Table of Contents 1 Message from the President 2 Vision, Goals 3 Organization
-----------------------	--

2 Faculties and Schools	4 Faculty of Letters 5 Faculty of Law 6 Graduate School of Social and Cultural Sciences 7 Faculty of Humanities and Social Sciences 8-9 Faculty of Education / Graduate School of Education (Professional Graduate School) 10 Faculty of Science 11 Faculty of Engineering 12-13 Faculty of Advanced Science and Technology / Graduate School of Science and Technology 14-15 School of Medicine / Graduate School of Medical Sciences / Graduate School of Health Sciences 16 School of Pharmacy / Graduate School of Pharmaceutical Sciences 17-18 Faculty of Life Sciences 19 Undergraduate and Graduate Courses
--------------------------------	--

3 Centers and Institutes	20 Institute of Molecular Embryology and Genetics / Institute of Industrial Nanomaterials / Priority Organization for Innovation and Excellence / Organization for Globalization 21 Headquarters for Admissions and Education / Institute of Light Metals (ILM) International Research Center for Medical Sciences (IRCMS) 22 International Research Organization for Advanced Science and Technology (IROAST) / Research and Education Institute for Semiconductors and Informatics / Kumamoto Innovative Development Organization 23 Eisei-Bunko Research Center / Center for Water Cycle, Marine Environment, and Disaster Management / The Memorial Museum of the Fifth High School 24 Magnesium Research Center / Institute of Resource Development and Analysis / Joint Research Center for Human Retrovirus Infection / University Archives / Environmental Safety Center 25 Research Center for Buried Cultural Properties / Health Care Center / Student Accessibility Support Room / Institutional Research Office / Campus Design Office 26 University Hospital 27 University Library / Technical Division 28-29 Local and Overseas Offices 30 Kumamoto University Campus Museum • Historical Architecture
---------------------------------	--

4 Academic and Research Projects	31 International Collaborations 32-33 Top Global University Project 34-36 Initiatives to Develop Prominent Research
---	--

5 International Exchanges	37-41 International Exchange Agreements 42 Researchers and Scholars Exchanges 43 International Students 44 Japanese Students Abroad / Overseas Foreign Language Training Program 45 International Programs / Japanese Language Classes 46 Kumamoto University Summer Program / Double Degree Programs 47 International Projects and Activities
----------------------------------	---

6 Facts	48 Administrative Officers 49 Number of University Personnel 50 Student Enrollment / Student Financial Aid 51 Student Admission / Student Tuitions and Fees 52 Degrees Awarded / After Graduation 53 Budget Breakdown 54 Welfare facility
----------------	--

7 History	55-56 History
------------------	----------------------

8 Access	57-59 Campus Maps 60 Location
-----------------	--

	61 The Kumamoto Area
--	-----------------------------



Message from the President

OGAWA Hisao

President of Kumamoto University

Kumamoto University was established in 1949 as a national university through the merger of six government schools, but its roots date all the way back to the 18th century. To date, our university has sent more than 120,000 talented individuals into the world, and our graduates are active in various fields throughout society.

Humanity faces many serious global issues today, including environmental pollution, scarcity of energy, water and food resources, regional conflicts, and anthropogenic climate change. We believe an important mission of universities is to take on the challenges involved in solving the complex problems that extend across national borders and return the results of our efforts to benefit society.

With this role in mind, Kumamoto University has formulated the “Kumamoto University Initiative 2030” looking ahead to the year 2030. Through the three main ideals of “Always communicating,” “Always transparent,” and “Always improving,” we are working to achieve the SDGs beyond the boundaries of nation, region, and discipline, and also endeavor to be a research and education hub that collaborates with society.

In education, we will foster global citizens capable of developing novel solutions in the age of DX, irrespective of their chosen field, through education that equips all students with mathematical and data science expertise and the necessary skills to engage in international dialogue. Our doctoral program will nurture highly skilled professionals who are accomplished at flexibly responding to the demands of society through creative innovation.

In research, we will further develop our internationally

advanced research organizations in the life and natural sciences, humanities, and social sciences into one-of-a-kind research centers in Japan, and continue to refine our cutting-edge research abilities. Furthermore, we will work to strengthen our research support system so that we may discover and cultivate research fields with the greatest potential.

In recent years, global companies in the semiconductor field have been moving into Kumamoto Prefecture, thus increasing the demand for human resources in the semiconductor field. In response to this social need, we established the Research and Education Institute for Semiconductors and Informatics in April 2023. This institute aims to promote advanced research in semiconductors and related fields, as well as the development of high-level human resources. Furthermore, in April 2024, we plan to open the School of Informatics, which will be the first faculty-equivalent organization since the founding of Kumamoto University, and the Semiconductor Device Program, marking the first bachelor’s degree program at a Japanese university specializing in semiconductor education.

Kumamoto University is committed to strengthening its role as an education and research hub contributing to the world through “co-creation” with society. Our promise is to actively return the fruits of our labor to humanity so that we may improve the development of the region, society, and the world.

Hisao Ogawa

創造の森 挑戦の炎



“Forest of Creative Power, Blaze of Challenging Spirit”

Kumamoto University (KU), a globally active research university with roots in local communities, has adopted a motto that symbolizes the university's unique attributes and expresses its essential quality: “KU Spirit.”

VISION

Kumamoto University aims to contribute to the community and global society by cultivating intelligent, moral, and skillful people, while working for the creation, inheritance, and development of knowledge, following the spirit of the Fundamental Law of Education and the School Education Law.

GOALS

Education

In order to cultivate unique, creative people, the university provides a comprehensive education based on a consistent philosophy followed by all of our undergraduate departments and graduate schools.

Our undergraduate departments, with the help of a broad education, inculcate in students the abilities of international communication, adapting to the information age, and thinking and acting independently.

Our graduate schools cultivate highly specialized workers with comprehensive reasoning ability, technical knowledge, and internationally recognized skills, in addition to deep insight into humankind and nature, on the basis of the undergraduate education that our student receive.

As an institution that is open to the public, the university offers a place where people can engage in lifelong learning.

Research

The university strives to protect and develop humankind's cultural heritage, while enhancing its capabilities to function as a center of advanced academic research and proactively promote cutting-edge, creative academic research.

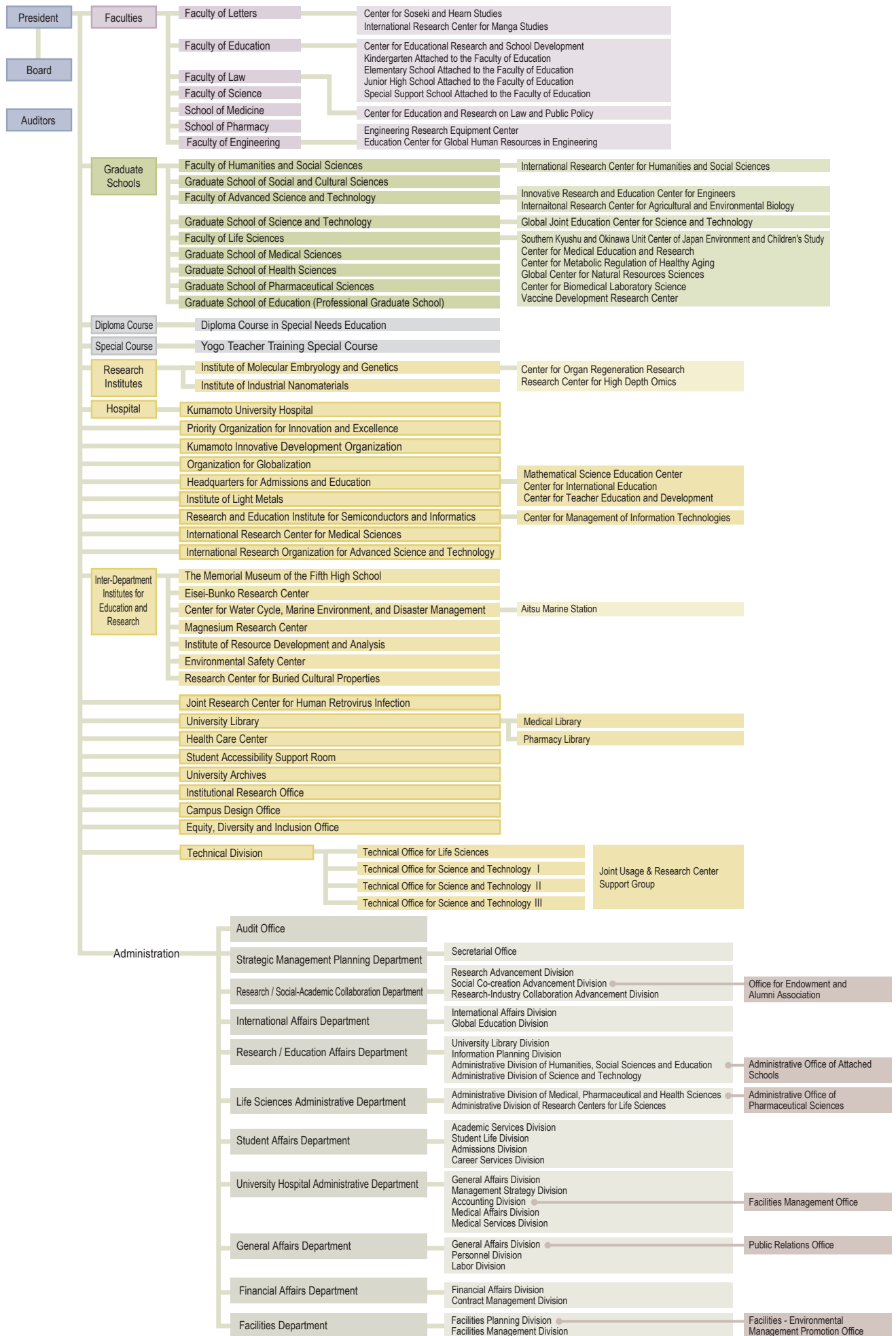
In addition, by making use of its unique features, comprehensively deepening knowledge in the fields of human science, social science, and natural science, as well as promoting interdisciplinary research, Kumamoto University is working to contribute to the harmonious coexistence of humans and the environment, as well as sustainable societal development.

Contributions to local and global communities

As a university located in a regional hub city, the university will strengthen its cooperation with the local community and serve the functions of being a central research facility and cultivating leaders in the local community. By striving to convey our academic culture to the world, the university will contribute to the promotion of local industry and to advancing the provision of information about the culture.

In addition, the university strives to promote international intellectual exchange, educate international students, and train graduate students capable of producing a bilateral international exchange.

ORGANIZATION





Faculty of Letters

- **Department of Integrated Human Studies**
Human Sciences, Socio-human Studies, Regional Science
- **Department of History**
Japanese History and Archaeology, the Modern World System
- **Department of Literature**
East-Asian Languages and Literature, Euro-American Languages and Literature, Multicultural Studies
- **Department of Communication and Information Studies**
Communication and Information Studies, Contemporary Cultural Resource Studies

Faculty of Letters

The Faculty of Letters was established in May 1949 as part of the new Faculty of Law and Letters. This faculty was then split into the Faculty of Law and the Faculty of Letters in 1979. The education and research framework of the Faculty of Letters consists of four educational departments, which are the Department of Integrated Human Studies, the Department of History, the Department of Literature, and the Department of Communications and Information Studies. The Faculty welcomes 170 new students each year. Approximately 70 faculty members are conducting academic research in a broad number of areas, including the humanities, social studies, and cultural studies.

The Faculty's research activities include aspects of the history and social problems specifically related to Kumamoto prefecture. The Eisei-Bunko Research Center, an interdepartment institute of Kumamoto University since 2017, was originally established as an affiliate institute of the Faculty of Letters in 2009. The purpose of the Center is to enable analysis of the scholarly values of historical materials in the Hosokawa clan's centuries-old collection, and to promote academic advances of its research.

■ Institution ■

Center for Soseki and Hearn Studies

The Faculty of Letters Center for Soseki and Hearn Studies (established December 2017) aims to create an organization dedicated to the comprehensive research of Natsume Soseki and Lafcadio Hearn, focusing mainly on Kumamoto University's own collection, coordinating with cultural administrative organizations to promote cultural advancement in the region, and using these activities to train professional researchers who will contribute to research in the humanities and social studies as well as cultural promotion.

International Research Center for Manga Studies

International Research Center for Manga Studies attached to the Faculty of Letters (established October 2022) aims to play a central role in the concept of "Manga Prefecture Kumamoto" through collaboration between industry, government and academia, and at the same time to become a leading research institution in Media Arts and contemporary culture research at home and abroad, by establishing a centre for research in Media Arts with a focus on Manga.

URL: <http://www.let.kumamoto-u.ac.jp/en/>



Faculty of Law

■ **Department**
Department of Law

■ **Courses**
Law•Public Policy, Advanced•Leader

Faculty of Law

The Faculty of Law at Kumamoto University has been delivering high quality legal education for almost 70 years. Established in 1949, now with over 840 undergraduate students and around 50 full-time staff, we have evolved into one of the leading departments of law in Japan. We provide a stimulating and supportive environment for undergraduate

study. Students are taught in a mixture of large lectures and small seminar groups where they develop their analytical and critical skills. They may take a course of lectures on Public Law, Private Law and International Law. Alongside the law courses, students enrolled in this Faculty can also learn Economics, Political Science and Conflict Resolution.

URL: <http://www.law.kumamoto-u.ac.jp/en/>



Graduate School of Social and Cultural Sciences

■ Master's Program is composed of:

Division of Jurisprudence and Public Policy
 Joint Degree Program in Conflict Resolution of Kumamoto University and University of Massachusetts Boston
 Division of Modern Social Human Studies
 Division of Cultural Science Studies
 Division of Instructional System Studies

■ Doctoral Program is composed of:

Division of Human and Social Science Studies
 Division of Cultural Science Studies
 Division of Instructional System Studies

Graduate School of Social and Cultural Sciences

The former Graduate School of Social and Cultural Sciences was established in April 2002, which offered a three-year independent, interdisciplinary and comprehensive Doctoral Program based on a wide range of fields given in the Faculty of Letters and the Faculty of Law. The Division of Instructional System Studies (Master's Program), which was designed to foster e-learning professionals, was founded in April 2006. In April 2008 was established the present Graduate School of Social and Cultural Sciences (GSSCS) which consists of Master's Program and Doctoral Program, by reorganizing the former Graduate School of Social and Cultural Sciences (Doctoral Program), Graduate School of Letters (Master's Program), Graduate School of Law (Master's Program), and Division of Instructional System Studies.

The Master's Program of the GSSCS is composed of five divisions: Jurisprudence and Public Policy Studies; Modern Social Human Studies; Cultural Science Studies; Joint Degree Program in Conflict Resolution between Kumamoto University and University of Massachusetts Boston(JDP) ; Instructional System Studies. The first three divisions offer three, four and seven courses respectively: Law, Policy and Conflict Resolution Research Course, Law and Public Policy Practice Course, Conflict Resolution Practice Course; East-Asian Business

Communication Specialist Course, Advanced Ethics Research Course, Field-Research Research Course, Cognitive Philosophy and Psychology Research Course; Cultural-Administration and Curator Specialist Course, High School Japanese-language Teaching Specialist Course, English-language Education Specialist Course, History Research Course, Japanese and East-Asian Culture Research Course, Euro-American Culture Research Course, Contemporary Cultural Resources Research Course. And the JDP was established in April 2021.

The Doctoral Program aims to foster highly specialized professionals and researchers. It comprises three divisions: Human and Social Science Studies, Cultural Science Studies, Instructional System Studies. The first two divisions offer six and four fields respectively: Public Policy Studies, Legal Studies, Conflict Resolution Studies, Advanced Ethics Studies, Field-Research Studies, Cognitive Philosophy and Psychology Studies; English-language Pedagogy Studies, History Studies, Japanese and East-Asian Culture Studies, Euro-American Culture Studies. The Master's and the Doctoral Programs are open to working people and overseas students, as well as those who go on to it from the Master's Program.

URL:<http://ewww.kumamoto-u.ac.jp/dept/social/>

Following the establishment of the Faculty of Life Sciences and the Faculty of Advanced Science and Technology, which arose from the process of a stricter selection focusing on research fields in the graduate school, the Faculty of Humanities and Social Sciences was established on April 1, 2017 by reorganizing the Faculty of Letters, the Faculty of Law, the Graduate School of Social and Cultural Sciences, and the School of Law.

The establishment of the Faculty of Humanities and Social Sciences means that university teaching staff are effectively allocated among the three fields of life sciences, natural sciences and human/social sciences. This realignment makes it possible to work through the rapid population decline among youth and to meet the growing needs of globalization. It also makes it possible to readjust education programs more flexibly, thereby ensuring a quality academic education.

The Faculty of Humanities and Social Sciences aims to contribute academically with practical relevance to community vitalization, to construct a research hub for human and social science studies in order to actively produce worldwide scholarly achievements, and to promote global level research through active collaboration among members of the human/social science and legal fields. In human science fields such as psychology, history and sociology in particular, the Faculty also intends to augment relationships and cooperation with overseas colleges and universities and bring about greater research achievements internationally, thereby shifting conventional academic culture studies to a more invigorating course infused with international cooperation.

The Faculty is also contributing to the field of conflict resolution by consolidating the research resources of humanities, law and policy in order to establish a solid foundation of international standards in research, and to develop practical areas of research that will be able to respond to the various demands of society.

■ Institution ■

International Research Center for Humanities and Social Sciences

The International Research Center for Humanities and Social Sciences (IRCHSS) was established in 2020 as a project based research organization affiliated with the Faculty of Humanities and Social

Sciences for the global and local promotion of research activities in selected fields where ongoing research by the faculty members has had significant achievement and deserves international recognition. The initial two projects of the Center are New Approaches to Theories and Methods of Historical Document and Artifact Analysis and Research Resource Archives for Interdisciplinary Studies.



Faculty of Education

■ **Course**

Teacher Training for School Education

■ **Programs(Major)**

Primary and Secondary Education Program,
Special Needs Education Program, School Health Teacher Education Program

■ **Programs(Minor)**

Japanese, Social Studies, Mathematics, Sciences, English, Music, Art, Health and Physical Education, Technology and Engineering, Home Economics, Special Needs Education, Educational Studies, Psychology, Special Needs Education

Graduate School of Education (Professional Graduate School)

Professional and Developmental Course in School Education

■ Faculty of Education

The Faculty of Education was established in May 1949 under the new Kumamoto University system. It originated from schools such as the Kumamoto Teacher's High School created in 1874.

Teacher Training Course for School Education in the Faculty of Education currently has three programs: 1)Primary and Secondary Education Program; 2)Special Needs Education Program; and 3)School Health Teacher Education Program.

In addition, at the Center for Educational Research and School Development, students can receive advice on matters related to educational practice, particularly what to do when problems occur on the job. The Center also engages in practical research.

URL: <https://kurokami.educ.kumamoto-u.ac.jp/>

■ Institution ■

Center for Educational Research and School Development

The Center analyzes and seeks practical solutions to the problems that arise in education. It also conducts research on what types of classes and curricula meet contemporary needs. To achieve these aims, it has established an Education Clinic Division and an Education Curriculum Division. It also develops comprehensive, practical activities in cooperation with related organizations.

URL: <https://www.educ.kumamoto-u.ac.jp/~jissen/>

■ Special Courses ■

Diploma Course in Special Needs Education

This course is geared toward incumbent teachers as well as current students from Kumamoto University and toward students with a BA degree or higher from other universities. Through specialized instruction in special needs education, the course helps students to fulfill the requirements for their Diploma and teaching certificate in Special Needs Education.

Yogo Teacher Training Special Course

This course is meant to produce highly qualified Yogo teachers. It is designed for those who already have their nursing license, as well as those who are in the process of obtaining it. The curriculum consists of general education subjects, specialized subjects in Yogo teacher and specialized subjects in teaching.

■ Graduate School of Education (Professional Graduate School)

The Graduate School of Education was newly started in April of 2017, the only major being: Teacher Training Practices and Development.

The purpose of this major is to develop practical skills in teaching, guiding students, and in managing schools themselves, as well as developing the ability to conduct research on these topics.

This major is staffed with both researchers and practitioners.

In April, 2020, the Graduate School of Education was expanded and started to offer the following three courses: 1) Advanced Course in Educational Practices, 2) Advanced Course in School Subject Methods and Practices, and 3) Advanced Course in Special Needs Education.

Students who complete the Graduate School of Education course receive a professional degree of Master of Education and their Advanced Class Teacher Certificates.

URL: <https://www.educ.kumamoto-u.ac.jp/~profsch/>



Faculty of Science

■ Department

Department of Science

■ Courses

Mathematics, Physics, Chemistry, Earth and Environmental Sciences, Biological Science

Faculty of Science

Kumamoto University was established in May of 1949 by integrating six education institutions under the old system. Among them were the Fifth High School (est. October of 1887) and the Kumamoto Technical College (est. 1906). With these two schools as the predecessors for the Faculty of Science, education in natural sciences has been fundamental for Kumamoto University since its founding. In 2004, the Faculty of Science underwent dramatic changes by merging the existing six departments into one, to offer courses for the first two years of the bachelor's degree program. Undergraduate students then decide the specialized educational program they are interested in. After assessing which courses are appropriate for their career paths, students may choose a major in their third year of undergraduate studies.

In addition, the Faculty of Science provides personalized educational activities to individual students through the tutor system run by the department staff. The Faculty of Science conducts not only basic research, but also applied research in various fields to address the technological and social issues in the Kumamoto and Kyushu regions. Student career prospects after graduation include employment in the government and public sectors, businesses, and education. Many students also choose to continue their studies in post-graduate education.

URL: <http://www.sci.kumamoto-u.ac.jp/>



Faculty of Engineering

■ Department of Civil and Environmental Engineering and Architecture

- Civil and Environmental Engineering
- Urban and Regional Planning and Design
- Architecture and Building Engineering

■ Department of Mechanical and Mathematical Engineering

- Mechanical Engineering
- Mechanical Systems
- Applied Mathematics

■ Department of Computer Science and Electrical Engineering

- Electrical Engineering
- Electronic Engineering
- Computer Science

■ Department of Materials Science and Applied Chemistry

- Chemistry and Bioscience
- Chemistry and Materials
- Materials Science and Engineering

Faculty of Engineering

The origin of the Faculty of Engineering was the Department of Engineering of the Fifth High School, which was established in 1897. Since then, the university has turned out about 40,000 alumni who are working actively all around the world. Thanks to an existing alumni network, graduates have been able to find work with many quality companies. Many other students choose to continue their education in a master's program after they graduate. The goals of the Faculty of Engineering are two-fold. First, it aims to contribute to the well-being of humankind and the development of society by creating the technology to help society coexist with the global environment. The second aim is to foster people with a rich sense of humanity who can contribute to the global and local communities by looking at things from a global point of view.

■ Institution ■

Engineering Research Equipment Center

Various measuring and testing instruments (TEM, LVP-SEM, XRD, ESCA, etc. - about 20 models) are made available for advanced experiments and researches by allowing their shared use.

Education Center for Global Human Resources in Engineering

At this center, basic courses (basic engineering, engineering English), fundamental department courses, and sub-education programs (creative engineering and design, global extension, disaster prevention and mitigation, etc.) are offered to all departments of the Faculty of Engineering.

URL: <https://www.eng.kumamoto-u.ac.jp/english/>



■ Faculty of Advanced Science and Technology (FAST)

Keeping with the trend towards prioritizing post-graduate education, the Graduate School of Science and Technology (GSST) was reorganized in April 2016, and the Faculty of Advanced Science and Technology (FAST) was established. In accordance to this change, FAST is now responsible for the administrative management duties, while GSST handles the education activities.

FAST consists of 6 divisions: Natural Science, Materials Science and Chemistry, Industrial Fundamentals, Informatics and Energy, Civil Engineering and Architecture, and Biomedical Engineering with a total of 27 research fields under these divisions. FAST aims to promote the study of advanced natural sciences, leading to a cooperative and sustainable global society. In addition, FAST also aspires to create an academic hub for advanced research in applied technologies. Through close cooperation between basic research and engineering departments, this new organization system was launched to promote unique and advanced research activities to address current societal issues. FAST endeavors to comprehensively deepen scientific knowledge, develop new technologies, and foster individualization in post-graduation education.

■ Institution ■

Innovative Research and Education Center for Engineers

The center provides access to engineering equipment to support research and education. Although the center itself does not house the equipment, it collaborates with the Engineering Research Equipment Center, Innovation Machine Factory and Kurokami Radioisotope Laboratory to manage and provide access of the equipment for Kumamoto University faculties with some facilities also available for the local communities.

International Research Center for Agricultural and Environmental Biology (IRCAEB)

The International Research Center for Agricultural and Environmental Biology (IRCAEB) was founded in April of 2021 to facilitate collaboration among researchers in molecular genetics, chemistry, agronomy and pharmacology. In addition, IRCAEB also promotes the cooperation between academics and industry experts performing basic and applied research. IRCAEB is divided into the Department of Basic Research and the Department of Molecular Agriculture, and aims to enhance the productivity and sustainability of Kumamoto's agriculture and fishery industries, while connecting with the international community to disseminate its research findings.

URL: <https://www.fast.kumamoto-u.ac.jp/en/home/>

■ Graduate School of Science and Technology (GSST)

After its restructuring in 2006, GSST now conducts post-graduate education with a strong focus on research. GSST includes 5 departments that grant master's degrees and 2 departments that grant doctorates. With the rapid pace of globalization, it has become vitally important to promote international collaboration with universities abroad, in both research and education. Furthermore, domestic collaborations among Japanese universities, industry and government institutions are also critical in developing an international and interdisciplinary environment for students.

GSST is committed to foster comprehensive problem-solving skills, leadership and creativity in students, making GSST an international institution distinguished by its fastidious pursuit of knowledge and academic freedom.

URL: <https://www.fast.kumamoto-u.ac.jp/gsst-en/>

■ Institution ■

Global Joint Education Center for Science and Technology (GJEC)

For the future of post-graduate education, the promotion of globalization and the fostering of innovation skills in individuals through science and technology are essential. To achieve these goals, it is vital that students deepen their basic skills in their respective fields of specialization, such that these skills can be applied in broader perspectives. GJEC was established in GSST in April of 2007, to provide students the opportunities to take courses in different fields and develop innovation skills. GJEC also offers Advanced General Education subjects, which provide students with broad-range knowledge across multiple disciplines of science and technology, to enhance the utilities of their academic skills in various aspects of the society.

Master's Course

Department of Science	Mathematics Physics Chemistry Earth and Environmental Sciences Biological Sciences
Department of Civil and Environmental Engineering and Architecture	Civil and Environmental Engineering Urban and Regional Planning and Design Architecture and Building Engineering
Department of Mechanical and Mathematical Engineering	Mechanical Engineering Mechanical Systems Applied Mathematics
Department of Computer Science and Electrical Engineering	Electrical Engineering Electronic Engineering Computer Science
Department of Materials Science and Applied Chemistry	Chemistry and Bioscience Chemistry and Materials Materials Science and Engineering

Doctoral Course

Department of Science	Mathematics Physics Chemistry Earth and Environmental Sciences Biological Sciences
Department of Advanced Industrial Science	Environmental Conservation Engineering Environmental Management and Planning Architecture and Environment Planning Building Materials and Structures Advanced Mechanical Systems Intelligent Mechanical Systems Applied Mathematics Computer Science and Communication Engineering Frontier Technology for Energy and Devices Human and Environmental Informatics Applied Chemistry and Biochemistry Materials Science and Engineering

SCHOOL OF MEDICINE

GRADUATE SCHOOL OF MEDICAL SCIENCES

GRADUATE SCHOOL OF HEALTH SCIENCES

■ 医学部 ■

■ 医学教育部 ■

■ 保健学教育部 ■



School of Medicine

■ School of Medicine

Subjects → Molecular and Cellular Biology, Molecular Genetics, Anatomy and Histology, Physiology and Biochemistry, Microbiology and Immunology, Pathology and Pharmacology, Social and Environmental Medicine, Internal Medicine, Surgery, Developmental Medicine, Bioethics, Sensory and Motor Medicine, Clinical Neurology and Psychiatry, Integrated Medicine

■ School of Health Sciences

Courses → Course of Nursing, Course of Radiological Sciences, Course of Medical Laboratory Sciences

Graduate School of Medical Sciences

■ **Master's Course**
Medical Sciences

■ **Doctoral Course**
Medical Sciences

Graduate School of Health Sciences

■ **Master's Course**
Nursing, Radiological Sciences, Medical Laboratory Sciences, Genetic counseling

■ **Doctoral Course**
Nursing, Radiological Sciences, Medical Laboratory Sciences

School of Medicine

The Kumamoto University School of Medicine comprises the School of Medicine, which offers a six-year medical degree program, and the School of Health Sciences, which offers a four-year health sciences degree program. The Kumamoto University School of Medicine fosters doctors and medical professionals possessing cutting-edge medical knowledge and deep compassion for their patients.

The School of Medicine has produced over 10,000 graduates since it was established as the independent Kumamoto Medical School in 1896. Specialized instruction in the field of medicine is provided by faculty members in medicine and life sciences. The School of Medicine has developed a curriculum that mostly reflects actual medical research and medical care, focusing on fostering medical doctors with excellent personal communication skills. The Center for Medical Education and Research was founded in October 2010 with the mission of educating medical professionals. This Center carries out research on educational systems, curriculum reform of the Medical School, education of clinical medicine and practical techniques, and so forth.

In October 2003, the College of Medical Sciences, which included an advanced midwifery course, and the Nursing Teacher Training course from the Faculty of Education were integrated into the School of Health Sciences. The School has three courses (Course of Nursing, Course of Radiological Sciences, Course of Medical Laboratory Sciences), and aims to provide a spiritually rich education based on respect for life and humanity, along with a high level of specialized knowledge, and is cultivating medical staff, researchers, and educators who are highly qualified to contribute to many facets of society as members of medical teams.

URL: <http://www.medphas.kumamoto-u.ac.jp/en/medical/index.html>

Graduate School of Medical Sciences

The Graduate School of Medical Sciences was remodeled and established in April 2003 as a graduate school educational institution with the aim of cultivating medical researchers, educators, and advanced medical staff.

The graduate school consists of a four-year doctoral course and a two-year master's course that was established in 2002. The master's course (in Medical Sciences) was created in response to the upsurge in medical and biological research, as well as societal needs. The course is designed for graduates of 4-year undergraduate programs. Each academic year sees 20 students enrolled, for a total of 40 students. Graduates of the master's course are encouraged to continue their education by enrolling in the doctoral course. The doctoral course (Medical Sciences specialty) contains 88 students per academic grade, for a total of 352 students. Personalized education with research guidance is supplemented by courses in experimental medicine and graduate school seminars. Students complete the course by publishing their original research results in an international academic journal and writing a comprehensive thesis.

The Graduate School has many special courses and programs such as "Course of Educational Program for Advanced Research in Infectious Diseases and AIDS," "Course of Developmental Biology and Regenerative Medicine," "Program for Experts of Metabolism, Circulation and Related Informatics," and "Course of Educational Program for Extension of Healthy Life Expectancy," and a unique MD/PhD course, the Shibasaburo Program. The school has concluded the academic exchange agreement including double degree program with many universities overseas.

All courses are taught by instructors who belong to approximately 90 diverse research areas and medical care fields from the following: the Faculty of Life Sciences, Kumamoto University Hospital, the Health Care Center, the Institute of Resource Development and Analysis, the Joint Research Center for Human Retrovirus Infection, the Institute of Molecular Embryology and Genetics, the International Research Center for Medical Sciences, and the Center for Metabolic Regulation of Healthy Aging.

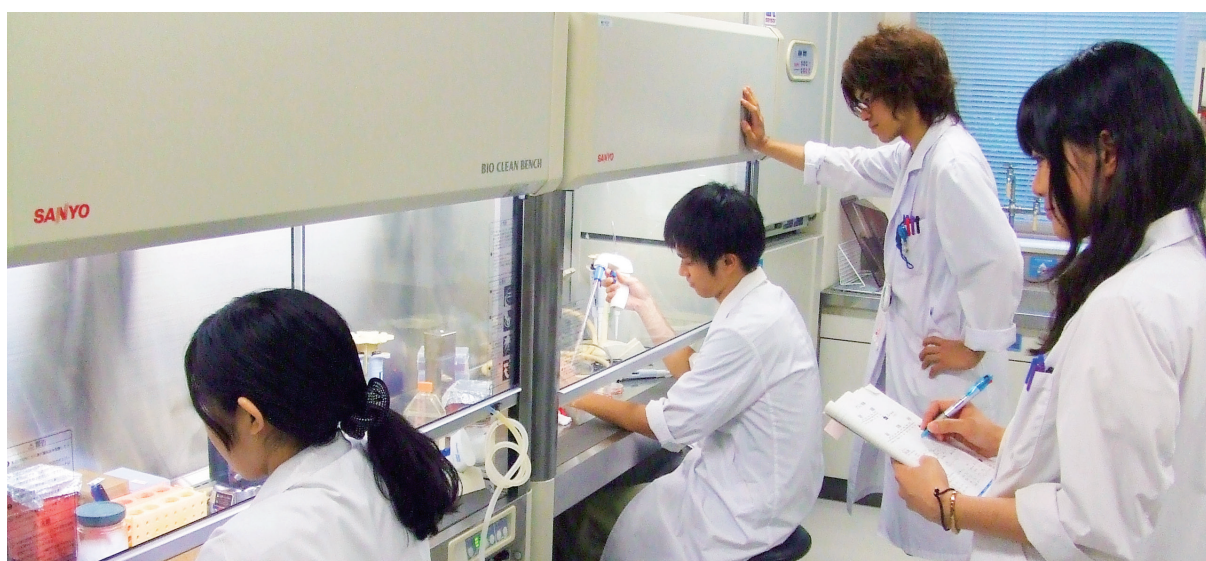
URL: <http://www.medphas.kumamoto-u.ac.jp/en/medgrad/>

Graduate School of Health Sciences

The Graduate School of Health Sciences was established in April 2008, and its doctoral program started in April 2010. The graduate school consists of the nursing course, the radiological sciences course, the medical laboratory sciences course, and the genetic counseling course, which is added since April 2022. The school aims to foster specialists and produce researchers and educators who can incorporate a wide range of advanced medical knowledge to establish and develop the educational system of health sciences. Each department requires 2 years of study for the master's program and 3 years for the doctoral program. Each academic year of the master's program has room for a total of 24 students. Students can obtain a master's degree in either Health Sciences or Nursing.

Each academic year of the doctoral program is limited to 6 students. Conditions for completion of the doctoral program require a successful review of a doctoral thesis and a passing grade on the final examination. Students can obtain a doctor's degree in either Health Sciences or Nursing.

URL: <http://www.hs.kumamoto-u.ac.jp/en/>



School of Pharmacy

■ Department

School of Pharmacy, School of Pharmaceutical and Life Sciences

■ Subject

Molecular and Genomic Pharmacy, Medicinal Chemistry, Life and Environmental Sciences, Clinical Pharmacy, Biomedical Polymer Sciences, Drug Delivery Sciences

Graduate School of Pharmaceutical Sciences

■ Master's Course

Pharmaceutical and Life Sciences → Drug Delivery, Bio-Pharma, Medicinal Chemistry, Life Science

■ Doctoral Course

Clinical Pharmacy → Pharmaceutical Health Care and Sciences, Clinical Pharmaceutical Sciences

Pharmaceutical and Life Sciences → Drug Delivery, Bio-Pharma, Medicinal Chemistry, Life Science

School of Pharmacy

The School of Pharmacy is based upon the principle that the pharmaceutical sciences are the integrated science contributing greatly to human health through medication. Students acquire a basic knowledge relating to the development, production and management of pharmaceutical products, environmental and health science as well as many other skills required for pharmacists. The school aims to cultivate creative graduates with high pharmaceutical scientific and ethical abilities based on life sciences. The school conducts basic practical and clinical training together with modern lectures that focus on education, from the three perspectives of knowledge, technique, and bedside manner. After graduating, students go on to work in various fields, as pharmacists in hospitals, pharmacies, pharmaceutical and chemical companies or in government and other public facilities. However, many graduates continue their education at graduate level to become either pharmaceutical researchers or advanced pharmacists.

In 2006, the pharmaceutical sciences course was split into the School of Pharmacy, a six-year course for the cultivation of pharmacists, and the School of Pharmaceutical and Life Sciences, a four-year course focusing on the training of researchers.

Graduate School of Pharmaceutical Sciences

The Graduate School of Pharmaceutical Sciences was established in April 2003 by partially integrating the faculties of the Institute of Molecular Embryology and Genetics (IMEG) and the Institute of Resource Development and Analysis (IRDA). This was preceded by the creation of the Faculty of Medical and Pharmaceutical Sciences. Thus, graduate students are educated by teaching staff from the Faculty of Life Sciences (founded in January 2010 by re-organizing the Faculty of Medical and Pharmaceutical Sciences), IMEG and IRDA. The school takes advantage of the strength of each faculty member to provide a great number of educational programs by combining pharmaceutical sciences and medical fields such as bioethics, genetics, embryology, cardiovascular, metabolism, and translational research. These unique educational programs further reinforce the foundation of basic pharmaceutical knowledge acquired during undergraduate studies.

The Graduate School aims to cultivate pharmaceutical researchers and advanced pharmaceutical specialists who can act independently and provide leadership in a wide variety of pharmaceutical fields involving the creation of medicinal products, biomedical research, and clinical/public health administration.

URL: <http://www.pharm.kumamoto-u.ac.jp/en/>



Faculty of Life Sciences

The Kumamoto University Faculty of Life Sciences is one of the leading schools in the fields of medicine, pharmacy, and health sciences in Japan. The Faculty of Life Sciences comprises three divisions (Integrated Medical and Pharmaceutical Sciences, Advanced Biomedical Sciences, and Environmental and Sociomedical Sciences), 15 specialized areas, and 57 departments, with affiliated facilities such as the Southern Kyushu and Okinawa Unit Center of the Japan Environment and Children's Study, the Center for Metabolic Regulation of Healthy Aging, and the Global Center for Natural Resources Sciences. The mission

of the Faculty of Life Sciences is threefold: (1) to produce world-class, cutting-edge knowledge through research activities, (2) to contribute to the health and welfare of society and humankind by using research knowledge as a driving force, and (3) to train the next generation of professionals who will play an active role in the local region and worldwide. To achieve these goals, faculty members in medicine, pharmacy, and health sciences conduct research based on interdisciplinary collaboration while maintaining their specialized capabilities and academic identities.

URL:<http://www.medphas.kumamoto-u.ac.jp/en/faculty/index.html>

■ Institution ■

Southern Kyushu and Okinawa Unit Center of Japan Environment and Children's Study

Southern Kyushu and Okinawa Unit Center of Japan Environment and Children's Study was founded as a research institute in July 2010 under the Faculty of Life Sciences at Kumamoto University. Children are exposed to various environmental risks, such as natural and manmade chemicals and socio-economic factors. The Japanese government (Ministry of the Environment) established a birth cohort study in 2010 to understand the effects of children's environmental exposures and to explore ways to reduce children's risks from environmental exposures. The Unit Center collects data within the designated study regions, and investigates environmental factors that affect children's health and development.

Center for Metabolic Regulation of Healthy Aging

Japan is now a "super-aged" society, and extending healthy life expectancy is one of the most important issues. On May 1, 2018, we launched a new Center for Metabolic Regulation of Healthy Aging (CMHA). CMHA comprises five divisions: (1) Metabolic and Circulatory Research, (2) Cancer and Stem Cell Research, (3) Nervous System, Sensory, and Locomotive Research, (4) Animal Models of Aging Research, and (5) Epidemiological Research. The goal of CMHA is to advance research on aging and healthy aging, and to train internationally competitive human resources in these fields.

Center for Medical Education and Research

The Center for Medical Education and Research was founded in October 2010 to contribute to the training of medical professionals through research and practice in order to achieve its educational mission of fostering medical specialists. The Center carries out (i) research on building systems for the education of medical professionals, (ii) curriculum reform aligned with a new medical education system, (iii) instruction in clinical medicine via student participation and practice in clinical medicine and procedures, etc.



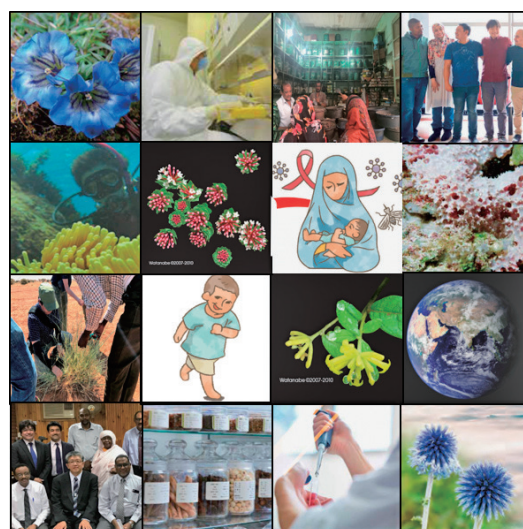
Global Center for Natural Resources Sciences (GCNRS)

The Global Center for Natural Resources Sciences (GCNRS) promotes natural product sciences and the UpRod project¹⁾ by utilizing a global research collaboration to improve lives and human health through developing innovative novel medicines. GCNRS will contribute to the development of human networks and resources related to the conservation of natural resources in different parts of the world. Furthermore, in cooperation with various related companies, this center will promote drug discovery research geared toward realizing the vision of a global society where natural ecosystems and human health are coordinated and harmonized.

¹⁾ UpRod project: In this project, we collect useful natural products that are not yet utilized around the world, extract active ingredients, and evaluate their pharmacological efficacy. We then select and optimize drug candidate compounds before we commercialize them.

Center for Biomedical Laboratory Science

The development of clinical laboratory techniques has led to the highly advanced medical diagnostic technology available today. To ensure the sustainable development of medical care, it is important to promote the development of new diagnostic technologies and cultivate human resources by reinforcing research at the university. We also have a duty to provide medical laboratory techniques developed in the university to the community as part of our social contributions. The Center for Biomedical Laboratory Science was affiliated with the Faculty of Life Sciences in Kumamoto University on April 23, 2021 to promote research and development of novel laboratory techniques, training of advanced medical professionals, and provide laboratory tests to the community. The Center carries out administrative screening inspections and mutational analyses of SARS-CoV-2 and conducts research and development on novel inspection technologies. Through this work, the Center also trains advanced medical professionals.

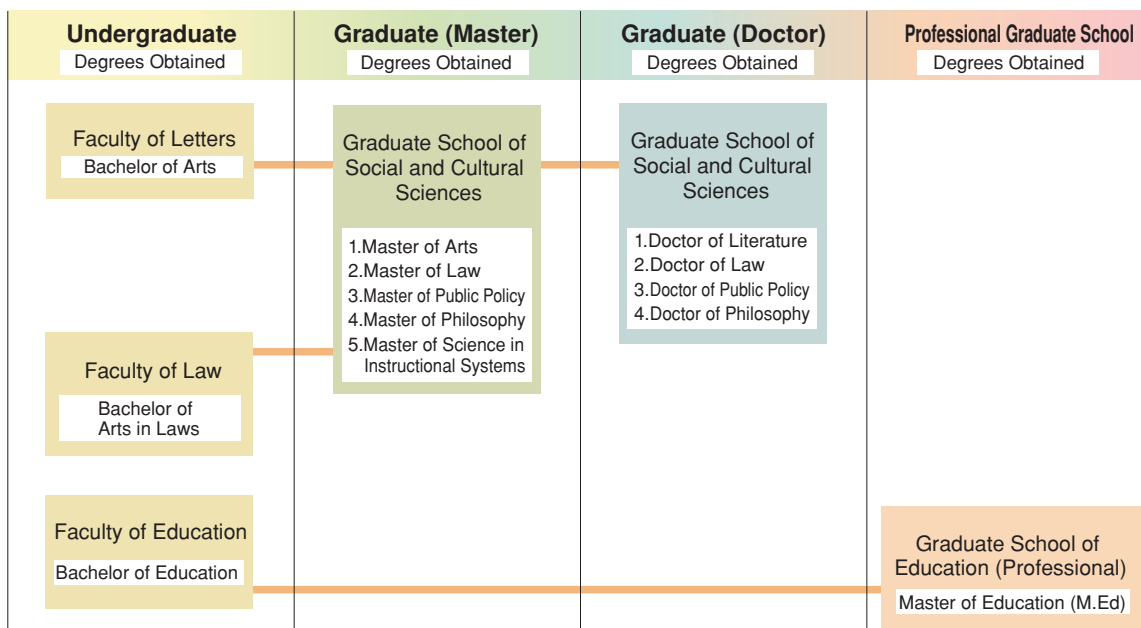


GCNRS

Global Center for Natural
Resources Sciences

UNDERGRADUATE AND GRADUATE COURSES

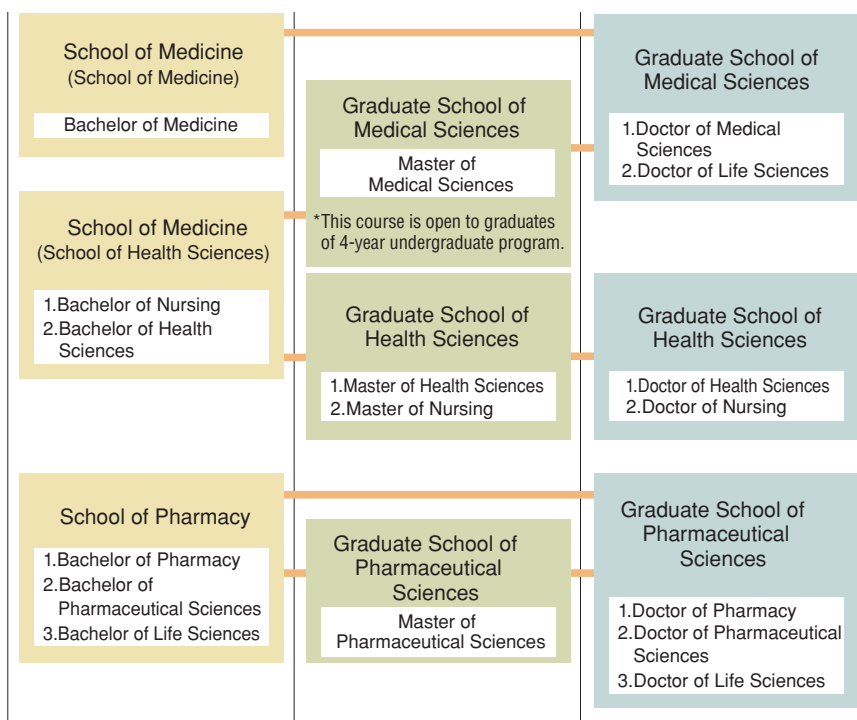
Humanities and Social Sciences



Science and Technology



Life Sciences



The above chart is an example of pursuing higher education between undergraduate and graduate courses, but is not comprehensive.

Centers and Institutes

Institute of Molecular Embryology and Genetics

発生医学研究所



The Institute of Molecular Embryology and Genetics aims to contribute to society by promoting the integration of life and medical sciences from the viewpoint of developmental biology. This institute was founded in 1992, and extensively reorganized in 2000 and 2009. It has three divisions (Developmental Regulation, Stem Cell Research, and Organogenesis) consisting of 14 laboratories. Our research interests include: epigenetics, chromosome and protein regulation, DNA damage and repair, intercellular communications, ES and iPS cells, hematopoietic differentiation, gametogenesis, brain function and morphogenesis, DNA higher-order structure, muscle regeneration, cell movement and morphogenesis, and kidney development. The institute is selected as one of the Joint Usage/Research Centers in Japan, designated as “Joint Research Center of Medical Embryology”, and supports the research community. In addition, the Center for Organ Regeneration Research was launched in 2012 to realize regenerative medicine through scientific collaborations with the University Hospital. Furthermore, the institute joins Inter-University Research Network for Research Center for High Depth Omics and the Research Center for High Depth Omics was launched in 2022 to promote the comprehensive approach driven by big-data of multi-level omics.

URL: <http://www.imeg.kumamoto-u.ac.jp/en/>

Institute of Industrial Nanomaterials

産業ナノマテリアル研究所



The Institute of Industrial Nanomaterials was established in April 2020 to specialize in two-dimensional nanomaterials, including nanosheets, surfaces, and grain boundaries. Two-dimensional nanomaterials are expected to greatly innovate materials chemistry, and therefore we perform research in various fields spanning the basics of two-dimensional nanomaterials involving nanosheets and surfaces/grain boundaries to specialized practical applications for these nanomaterials. The Institute has a comprehensive research facility to promote two-dimensional nanomaterial research, as well as special synthesis process facilities including an explosion experiment and bioelectronics research facilities of the formerly Institute of Pulsed Power Science. These facilities are provided not only for on-campus faculty and students, but for researchers at companies and other universities as well.

URL: <http://www.iina.kumamoto-u.ac.jp/en/>

Priority Organization for Innovation and Excellence

大学院先導機構



The Priority Organization for Innovation and Excellence was established to contribute to the enhancement and development of educational research activities at Kumamoto University. It does so by enriching and improving the graduate schools, and by promoting the world's most advanced COE (Center of Excellence) Studies Program; a highly evaluated program that encompasses life science, natural science, social and cultural sciences and interdisciplinary, multiple, or new disciplines base on organic cooperation between the fundamental sciences and the applied sciences. This has brought the creation of the new COE, a new research center and several new graduate courses (majors).

URL: <http://poie.kumamoto-u.ac.jp/en/>

Organization for Globalization

グローバル推進機構

In 2014, Kumamoto University was chosen by the Ministry of Education, Culture, Sports, Science, and Technology (MEXT) as a member of the “Top Global University Project”, to be a leading model for university reform in Japan, cultivating global human resources leadership, and actively promoting globalization efforts at home and abroad.

The Organization for Globalization was established on March 1, 2015 to address university-wide globalization. The Organization for Globalization was reorganized to establish the vice president as Director in April, 2018, to further strengthen globalization efforts in Kumamoto University.

Headquarters for Admissions and Education

大学教育統括管理運営機構

The Headquarters for Admissions and Education serves as a high governance organization to supervise quality control of higher education in Kumamoto University. Dealing with a changing entrance examination system and supporting both undergraduate and postgraduate students who are entering Kumamoto University during these changes, this organization constructs, supervises, and manages educational programs based on the analyses of enormous volume of educational data and in accordance with the vision, policy and strategy of the university as a core organization.

■ Mathematical Science Education Center ■

附属数理科学総合教育センター

The Mathematical Science Education Center (MSEC) in the Headquarters for Admissions and Education was established in January 2019 with the aim of promoting and enhancing mathematical science education including data science. MSEC also aims to improve mathematical science education in Kumamoto by cooperating with regional universities, technical colleges, and high schools.

In order to achieve these goals, MSEC improves teaching methods at Kumamoto University and prepares effective teaching materials related to mathematics and data science.

■ Center for International Education ■

附属多言語文化総合教育センター



The Center for International Education, affiliated with the Headquarters for Admissions and Education, offers multilingual, multicultural, and multidisciplinary studies courses aimed at equipping graduates with the skills needed to work on a global scale. These subjects help students develop deep comprehension of social and natural sciences, learn modern languages, and understand the values of various foreign countries and cultures, thereby providing them the tools needed to think both comprehensively and globally.

The Center is involved in cooperative learning programs between high schools and the university, and also works together with local businesses and the community.

■ Center for Teacher Education and Development ■

附属教職総合センター

The Center for Teacher Training, affiliated with the Headquarters for Admissions and Education, was established in 2022 in order to manage and improve the quality of teacher training at Kumamoto University. Cooperating with the local educational organization in Kumamoto as well as with other universities that offer teacher training courses, the Center contributes to the development of primary and secondary education in Kumamoto.

Institute of Light Metals (ILM)

先進軽金属材料国際研究機構

In April 2021, Kumamoto University established the Institute of Light Metals (ILM), together with the University of Toyama. This Institute is dedicated for advanced research and education on light metallic materials based on magnesium, aluminum and titanium, and it is the first such hub in Japan.

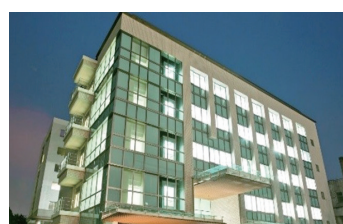
In April 2022, the Japanese government officially certified ILM a joint usage and research center, is also open for international collaboration.

The scope of the ILM is science, technology, education and international outreach. Moreover, ILM aims to help solve important issues regarding the environment, energy, sustainability, disaster prevention and mitigation, and biomedical technology by leveraging the robust research and development resources of the Magnesium Research Center of Kumamoto University and the Aluminum Research Center of the University of Toyama.

The ILM will also play a key role in enhancing industries in Japan by conducting integrated research and development on magnesium, aluminum and titanium alloys.

International Research Center for Medical Sciences (IRCMS)

国際先端医学研究機構



The International Research Center for Medical Sciences (IRCMS) was launched as the managing organization in April of 2015 to oversee Kumamoto University's Center of Excellence for world-class research in the life sciences. The center partners with other life science institutes in Kumamoto University to promote collaborative international research with distinguished research institutes overseas, and scouts and trains young investigators who contribute to ground-breaking discoveries in the medical sciences.

The center aims for 50% foreign researcher population, including Ph.D. graduate students. To reach this goal, the research environment within the IRCMS is equivalent to world-class research institutes found in western countries, and makes provisions for smooth international research collaborations.

The center has designated English as the official language, and features an open lab layout with few walls and partitions between labs to facilitate communication among scientists. It is expected that this will promote fusion research between the various fields within the institute.

URL: <https://ircms.kumamoto-u.ac.jp/>

International Research Organization for Advanced Science and Technology (IROAST) 国際先端科学技術研究機構



The International Research Organization for Advanced Science and Technology (IROAST), established in April 2016, is a Center of Excellence at Kumamoto University that promotes world-class, cutting-edge research in science and technology. Featuring a standardized international research environment that collaborates globally, the Organization utilizes a tenure-track personnel system.

IROAST encourages international collaboration to establish international research networks, recruit and develop excellent young researchers, promote ongoing leading-edge research, and initiate innovative interdisciplinary research projects. Especially, the Organization engages in international research activities focused on the science and technology needed to build a society that provides safety, security, and well-being, with the goal of realizing Society 5.0, which will support the next generation of natural sciences.

URL: <https://iroast.kumamoto-u.ac.jp/>

Research and Education Institute for Semiconductors and Informatics 半導体・デジタル研究教育機構

The Research and Education Institute for Semiconductors and Informatics was established in April 2023 with the aim of nurturing researchers and engineers who will lead Japanese industry and education. Our institute consists of the Semiconductor Division and the Integrated Information Division.

We are committed to advancing electronic and information technologies, through the research and development of cutting-edge semiconductors, spanning fields from fundamental principles to practical system applications, and of artificial intelligence (AI) and data science.

■ Center for Management of Information Technologies ■

附属情報統括センター



As the implementing organization for comprehensive information strategy at Kumamoto University, the Center for Management of Information Technology is established as a facility of the Research and Education Institute for Semiconductors and Informatics. This center aims to enhance and develop the educational and research activities of the university by establishing and operating the information infrastructure, providing information services, and advancing information security. Additionally, substantial progress is being made in the utilization of Information and Communication Technology (ICT) in education.

URL: <http://www.cc.kumamoto-u.ac.jp/en/>

Kumamoto Innovative Development Organization (KIDO)

熊本創生推進機構

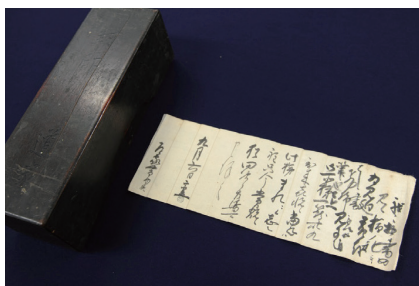


The Kumamoto Innovative Development Organization (KIDO) was established on April 1st, 2017 with the aim of contributing to the development of the Kumamoto region. In April 2018, KIDO was reorganized as a unified consulting department that provides systematic and strategic solutions to the needs and problems of the Kumamoto region. KIDO works actively in industry promotion, creation of employment opportunities, reconstruction after the Kumamoto Earthquakes of 2016, local problem solving, and developing community-oriented human resources.

URL: <https://ewww.kumamoto-u.ac.jp/en/centers/organizations/policy>

Eisei-Bunko Research Center

永青文庫研究センター



The Eisei-Bunko Research Center was established in 2009 as a facility affiliated with the Faculty of Letters. In April 2017, the Center was reorganized as an Inter-Department Institute for Education and Research to expand its achievements in research and social contributions more broadly.

Research is focused on the Eisei-Bunko Collection, a collection of documents related to the Kumamoto Domain. This collection is currently housed at Kumamoto University, and the documents are among the most detailed and extensive accounts of daimyo-era Japan available, both in terms of quality and quantity. This is a priority area for research and philanthropy unique to Kumamoto University.

Through the general study of the Eisei-Bunko Collection and other documents, the Eisei-Bunko Research Center has developed a solid research foundation. The Center also cooperates with culture organizations and local government to provide the results of its studies to the local community. In addition to this, the Center helps train students to be able to contribute in promoting culture and research that focuses on the humanities and social sciences.

URL: <http://eisei.kumamoto-u.ac.jp/en/>

Center for Water Cycle, Marine Environment, and Disaster Management (CWMD) くもと水循環・減災研究教育センター

The Center for Water Cycle, Marine Environment, and Disaster Management (CWMD) was established in April 2017. CWMD consists of four laboratories: the Water Resource Research Laboratory, the Marine Science Laboratory, and the Disaster Mitigation Laboratory and, the Urban and Regional Design Laboratory. The Center is a leader in research and education on groundwater resources in Kumamoto, the marine environments of the Ariake and Yatsushiro Seas, disaster mitigation, and community design and participation.

◆ Water Resource Research Laboratory

Through research and academic efforts, it aims to protect the water cycle related to groundwater resources.

◆ Marine Science Laboratory

It studies on biodiversity and ecosystems, sustainable development and conservation of marine resources, and analysis of environmental changes in coastal seabeds.

◆ Disaster Mitigation Laboratory

It promotes a wide range of research and education in disaster prevention and reduction activities to develop and sustain a disaster-resilient society.

◆ Urban and Regional Design Laboratory

It works on designing and implementing a livable, resilient, and sustainable local society that actively involves local communities and residents.

URL: <https://cwmd.kumamoto-u.ac.jp/en/>

■ Aitsu Marine Station ■

合津マリンステーション



The Aitsu Marine Station is located where the Ariake and Yatsushiro Seas meet, at an area remarkable for its 5-meter difference in sea level at low and high tides. No other marine station is situated at a place with such a high change in tides. Aitsu Marine Station is staffed by four people specialized in bioresource and biodiversity analysis who conduct training and research. The station has three buildings: a three-story dormitory for researchers (589 m²), a two-story building for practical study (785 m²), and a one-story building for breeding marine creatures.

There are two boats: the Dolphin Super Challenger and the Shiranuhi.

The Memorial Museum of the Fifth High School

五高記念館



Photograph by Toru Sakamoto

The Memorial Museum of the Fifth High School is composed of two historic buildings - the main Fifth High School building and the Chemical Laboratory - both of which are Important Cultural Properties. The Museum exhibits historical documents and artifacts related to education and activities at the Fifth High School. In addition to its exhibits, the Museum also holds lectures, lessons on cultural topics, experiential learning meetings, Community activities and the support of lifelong learning are central to the mission of the Memorial Museum of the Fifth High School.

URL: <http://www.goko.kumamoto-u.ac.jp/en/>

Magnesium Research Center (MRC)

先進マグネシウム国際研究センター



For many years, there has been a strong demand in the transportation industry, including automotive, rail and aerospace, for ways to reduce the weight of structural components, in order to reduce both energy consumption and CO₂ emissions. Magnesium is the lightest known structural metal and magnesium alloys are increasingly being used in a wide range of applications for both structural and functional benefits. In addition, biodegradable Mg biomedical devices can provide an impactful benefit for people's well-being.

The Magnesium Research Center (MRC) at Kumamoto University, established in December 2011, has been engaging in various magnesium-related research endeavours. They include alloy and process design, microstructure analysis, mechanical property characterization, corrosion, surface protection and recycling.

MRC has also developed an international magnesium research network. MRC has three missions: 1) to provide state-of-the-art research and education, 2) to develop a global research network, and 3) to promote international research collaboration.

URL: <http://www.mrc.kumamoto-u.ac.jp/en/>

Institute of Resource Development and Analysis

生命資源研究・支援センター



The Institute of Resource Development and Analysis (IRDA) was established for the purpose of promoting comprehensive education and research in various scientific areas by providing diverse research resources and information. Two major objectives of the IRDA are: 1) Production, development, preservation, and supply of experimental animals, including genetically engineered animals, and construction and analysis of databases using advanced bioinformatics, and mouse phenotyping analysis and 2) Research, education, enlightenment, data management, and technical support for experiments using laboratory animals, genetic materials, and radioisotopes.

URL: <http://irda.kuma-u.jp/en/index.html>

Joint Research Center for Human Retrovirus Infection

ヒトレトロウイルス学共同研究センター



On April 1, 2019, the Center for AIDS Research of Kumamoto University and the Center for Chronic Viral Diseases of Kagoshima University merged to form the Joint Research Center for Human Retrovirus Infection. This inter-university research center between two National University Corporations is a pioneering enterprise in Japan. The Center focuses on the prevention and eradication of human retroviruses, the latency of which has made it a challenging global health problem. To this end, we conduct global research and education based on our research achievements regarding the pathogenesis of human retroviruses. We are also developing our strengths—AIDS research at the Kumamoto campus and HTLV-1/HBV research at the Kagoshima campus—by utilizing economies of scale and the resources of our parental centers, clarifying our goals, educating the next generation of researchers, and sharpening our competitive edge in the world.

URL: <https://kumamoto-u-jrchri.jp/en/>

University Archives

文書館

The University Archives was established on April 1, 2016. In April 1, 2023, the Archives was designated as a facility for the appropriate management of historical or cultural materials, or materials for academic research by the Prime Minister. Our aim is to collect, preserve, and provide research materials related to: the history of Kumamoto University; local Kumamoto history and culture; and social issues that have occurred in the Kumamoto area, such as Minamata disease, the Menda incident, and leprosy (Hansen's disease). The contents of these collections are available on our website.

URL: <http://archives.kumamoto-u.ac.jp/>

Environmental Safety Center

環境安全センター



The Environmental Safety Center was established in 2001 to manage environment and safety issues at the university and its surroundings. The center aims to maintain a satisfactory setting for students studying at the university as well as ensure the safety of its staff and students, and in doing so, contribute to the overall promotion of education and research.

The main services of the center are : 1) Safety management and environmental conservation, including chemical management, for students studying at the university, as well as all related education and awareness services. 2) Services related to proper management and disposal of waste products. 3) Services related to environmental measurements such as water quality and atmospheric tests.

URL: <http://www.esc.kumamoto-u.ac.jp/en/>

Research Center for Buried Cultural Properties

埋蔵文化財調査センター



Photo:
Pottery pieces excavated from within campus grounds (from 1,600 years ago)

The eight campuses of Kumamoto University are built over some of the most famous historical sites in Kumamoto Prefecture, dating from thousands of years ago to modern times (at places like Kurokamimachi, Honjo, and Oe). As such, whenever digging must be performed as part of maintenance of college facilities (construction and repair of buildings and infrastructure), archaeological excavations are also performed to prevent damage to historical artifacts. In October 2011, the Center emerged as one of the Inter-Department Institutes for Education and Research from the Research Office for Buried Cultural Properties, which had been performing excavations since May 1994. The Center's objectives are the documentation, preservation, and practical use of the excavated cultural properties (archaeological features and relics). Excavation results are made public via annual and ad hoc reports, and visitors are always welcome to learn about what has been found in exhibition room.

URL: <https://www.kumamoto-u.ac.jp/organizations/maibun/en/>

Health Care Center

保健センター



The Health Care Center is located on the Kurokami North Campus. Three physicians, two clinical psychotherapists, one campus social worker and three nurses are available during normal school hours for consultation and treatment. Health Care Center provides help in resolving the various troubles, concerns, worries, and illness that can occur during college life. The service is free to all members of the university community.

URL: <http://hcc.kumamoto-u.ac.jp/english/>

Student Accessibility Support Room

障がい学生支援室

The Student Accessibility Support Room was established to enhance the support system for students with disabilities and to contribute to their unimpeded education in accordance with the enactment of the Act on the Elimination of Disability Discrimination of April 2016. The room facilitates consultations for students with disabilities and provides them with both reasonable accommodations and support adapted to individual needs. Also, regardless of disability or lack thereof, we also provide support for basic needs of student and daily life.

URL: <https://sien.kumamoto-u.ac.jp/en/>

Institutional Research Office

大学情報分析室

The Institutional Research Office (IR) was established in July 2014 to provide information, assessments, and evaluations on university administration to support decision making.

The IR is run by faculty staff and officers. Currently, it consists of a vice president, five faculty staff, twenty-one management staff, and four URA members.

The main work of the IR is collecting, investigating, and analyzing university data and IR advisors provide overall advice on IR activities. A database system named KU-RESAS that uses BI tools allows us to visualize data and make it available for analysis.

Data is obtained from Kumamoto University systems such as SOSEKI (education administration), ASO (GPA visualizations and education effectiveness), UPDS (employee and salary management), and COMET (entrance examination management). This data is categorized into education, research, social contributions, international relations, and administrative foundations. This data can also be combined for different purposes, e.g., finding relationships between education and research. Other university data, such as university ranking data, is also collected to measure and compare performance. This and other activities are how the IR contributes to university development.

Campus Design Office

キャンパス整備戦略室



The Campus Design Office was established in November 2018 in order to plan university development with a long-term perspective that ensures the university's facilities operate effectively and efficiently. The office utilizes a top-down facility management system to manage the whole university. The Campus Design Office consists of three departments (Facility Management, Energy Management, and Environmental Management) so that it can respond flexibly to situational changes in the future. The Office Manager and Department Heads are appointed by professors of the Faculty of Engineering to encourage collaboration among faculty and administrative staff members.



Rendering of completed amenity facility

In addition to central medical facilities, the hospital includes a Diagnosis and Treatment Department, a Department of Pharmacy, and a Nursing Department, with a total of 845 beds on inpatient floors (795 General Ward beds and 50 Psychiatric Ward beds). The hospital provides medical care to an average of over 1,450 outpatients per day.

As the only advanced treatment hospital in Kumamoto Prefecture, Kumamoto University Hospital works closely with local medical institutions to provide treatment services for complex diseases and advanced medical care (e.g., organ transplantation). Moreover, as a Prefecture-Designated Cancer Treatment Core Hospital, a Core Hospital for AIDS Treatment, a Kumamoto Prefectural Core Medical Center for Dementia Disorders, and a Kumamoto Prefectural Liver Disease Medical Treatment Core Hospital, Kumamoto University Hospital plays a central role in regional disease treatment.

In order to safely provide the highest levels of medical care, Kumamoto University Hospital has enhanced its medical infrastructure with advanced technologies like the da Vinci Xi surgical assistance robot, a neonatal ambulance, and a hybrid operating room.

Furthermore, with the aim of further improving services for all visitors, the hospital is in the process of building a new amenity facility that will house a convenience store, a bus waiting area, and a pharmacy on the 1st floor, a restaurant on the 2nd floor, and a multipurpose conference room on the 3rd floor, all accessible not just to university staff and students, but to visitors to the hospital as well. (To be completed in FY2024)

University Hospital

■ **Division of Internal Medicine**

Respiratory Medicine, Gastroenterology and Hepatology, Hematology, Rheumatology and Clinical Immunology, Nephrology and Hypertension, Diabetes, Metabolism and Endocrinology, Cardiovascular Medicine, Neurology, General Medicine

■ **Division of Surgery**

Cardiovascular Surgery, Thoracic Surgery, Gastroenterological Surgery, Breast and Endocrine Surgery, Pediatric Surgery, Transplantation, Urology, Gynecology

■ **Division of Child Health and Development**

Pediatrics, Obstetrics

■ **Division of Sensory and Motor Organs**

Orthopaedic Surgery, Dermatology, Plastic and Reconstructive Surgery, Ophthalmology, Otolaryngology-Head and Neck Surgery, Oral and Maxillofacial surgery

■ **Division of Radiology**

Diagnostic Imaging and Interventional Radiology, Radiation Oncology

■ **Division of Anesthesia, Neurosurgery and Psychiatry**

Neuropsychiatry, Neurosurgery, Anesthesia

■ **Departments**

Laboratory Medicine, Surgical Center, Central Radiology, Intensive Care Unit, Central Medical Supply, Rehabilitation, Surgical Pathology, Transfusion Medicine and Cell Therapy, Emergency Medicine, Infectious Diseases, Kidney Disease and Dialysis Center, Endoscopic Diagnostics and Therapeutics, Department of General Clinical Investigation, Department of Medical Informatics and Administrative Planning, Pharmacy, Nursing, Medical Technology, Department of Clinical Nutrition, Department of Medical Quality and Safety Management, Department of Infection Prevention and Control, Administration

■ **Centers**

Comprehensive Clinical Education, Training and Development Center, Innovation Center for Translational Research, Medical Liaison Center, Perinatal Medical Center, Cancer Center, Medical Engineering Center, Regional Medical Support Center, Transplantation Center, Disaster Medical Education and Research Center

Mission

Through advanced medical safety management, Kumamoto University Hospital practices "patient first" medical care, is dedicated to medical development and educating medical professionals, and contributes to the health and welfare of its community.

Vision

- ◆ We provide safe, reliable, and high-quality medical services thanks to our advanced medical safety management systems
- ◆ We are dedicated to excellence in patient care for respecting patient's wishes, anticipations and requests
- ◆ We develop and promote advanced medical care and educate outstanding medical professionals
- ◆ We contribute to local community by acting as a base for medicine and disaster prevention
- ◆ We are dedicated to practice sound operation and management to achieve our philosophy

Patient Rights

- ◆ We respect your personal wishes and dignity.
- ◆ You have the right to fair, quality medical care.
- ◆ You have the right to receive adequate explanation and information.
- ◆ You may choose medical care according to your own wishes.
- ◆ Your privacy and personal information will be protected.

Patient Responsibilities

- ◆ Please give us an accurate description of your health condition.
- ◆ Please participate actively in medical treatment.
- ◆ Please follow social rules and our hospital's regulations.
- ◆ Do not cause trouble for others.
- ◆ Please pay your medical fees on time.

URL: <https://www.kuh.kumamoto-u.ac.jp/en/index.html>

University Library

附属図書館



The University Library is composed of the Central Library, the Medical Library and the Pharmacy Library. It provides information resources and services to support the University's educational and research activities. The Central Library is open from 8:40 a.m. to 10:00 p.m. from Monday to Friday, and 12:00 p.m. to 6:00 p.m. on Saturdays and Sundays. (except for the vacations)

Library Holdings (As of March 31st, 2023)

	Books	Periodicals
Central Library	1,044,375	14,971
Medical Library	173,135	5,333
Pharmacy Library	35,371	975
Total	1,252,881	21,279

Special Collections of Books and Manuscripts

1. The Aso Manuscript Collection

This impressive collection of historical documents, formerly kept at Aso Shrine, contains a wealth of information relating to the Nanbokucho and Kamakura Periods. Of the 1,047 items of this collection, 34 volumes of 304 letters and 36 manuscripts have been designated as Important Cultural Properties.

2. The Hosokawa Manuscript Collection

This is the largest collection of primary source materials on the administration of the Hosokawa government (Hosokawa Han), ranging from the Nanbokucho Period to the early Meiji Period.

URL: <https://www.lib.kumamoto-u.ac.jp/eng/howtouse>

Special Collections from the 17th century and Meiji period



Kumamoto University Library
Official Mascot "KUMAPON"

Technical Division

技術部



"We support research and education using Technical Skills"

The Technical Division was organized in April 2020 to provide technical support for all departments in Kumamoto University. Every member of our team has a high level of expertise in their respective area.

We are energetically involved in many aspects of the university, such as experimentation, practical training, safety management, information security, machining and analysis. Additionally, we develop effective and efficient technical support for interdisciplinary and other forms of research.

LOCAL AND OVERSEAS OFFICES

Local Offices

Kumamoto University Tokyo Office

東京オフィス

Established: April 2004

- Scope:
1. Provides support for university-industry collaborations
 2. Offers information regarding the educational research activities of KU to businesses, the government, and other public offices and organizations
 3. Offers information regarding entrance exams to prospective students, and provides support to KU students who are seeking jobs
 4. Collaborates with alumni associations
 5. Conducts seminars and organizes various gatherings

Address: 4F Hibiyachunichi Building,2-1-4, Uchisaiwaicho, Chiyoda-ku,Tokyo 100-0011, Japan



Kumamoto University Kansai Liaison Office

関西リエゾンオフィス

Established: October 2009

- Scope:
1. Promotes collaboration with industry and government offices in the Kansai region, and promotes technology transfers
 2. Provides technical consultation, and conducts meetings and collaborative research gatherings
 3. Exhibits research processes and engages in public relations activities
 4. Distributes pamphlets and provides information about the entrance exams of KU, and assists students in finding jobs
 5. Collaborates with alumni associations
 6. Conducts seminars and other gatherings

Address: South Facility #2203, Creation Core Higashi Osaka 1-4-1 Aramoto Kita, Higashi Osaka City, Osaka 577-0011, Japan
E-mail: sangaku-somu@jimu.kumamoto-u.ac.jp



Overseas Offices

Kumamoto University Liaison Office at KAIST

韓国KAISTオフィス

Established: September 2008

- Scope:
1. Promotes research collaboration
 2. Supports the joint symposiums of KU and KAIST
 3. Provides information about KU and its entrance exams, and assists with public relations activities various gatherings

Address: KAIST Biomedical Research Center 291 Daehak-ro (373-1 Guseong-dong), Yuseong-gu, Daejeon 305-701, Korea



Kumamoto University Liaison Office at ITS

インドネシアITSオフィス

Established: April 2010

Established as the joint office of six national universities: April 2020
(Chiba Univ., Niigata Univ., Kanazawa Univ., Okayama Univ., Nagasaki Univ. and Kumamoto Univ.)

- Scope:
1. Promotes academic and student exchanges with partner institutions
 2. Cultivates Indonesian students who are interested in studying at KU, and assists students who are preparing to come to KU to study
 3. Promotes international collaboration of the university, industry and government
 4. Provides information about KU and its entrance exams, and assists with public relations activities
 5. Supports alumni activities

Address: ITS International Office Gedung Rektorat Lantai 1 Kampus ITS Keputih-Sukolilo Surabaya Jawa Timur, 60111, Indonesia
TEL: +62-31-596-6985



Kumamoto University Sudan Office

スーダンオフィス

Established: June 2016

- Scope:
1. Service as a base of research and educational exchange in Africa
 2. The dissemination of information on Japan and Kumamoto University to students and academic staff of exchange partner universities in Africa
 3. The establishment of a network of alumni and similar groups and persons in Africa
 4. Service as a base of Kumamoto University's activities in Africa

Address: Faculty of Pharmacy, University of Khartoum. P.O. Box: 1996, AlQasr street, Khartoum 11111, Sudan



Kumamoto University Liaison Office at STUST

台湾南台オフィス

Established: March 2019

- Scope:
1. Promotes academic and student exchanges with partner institutions in Taiwan
 2. Promotes international collaboration with partner intuitions in Taiwan
 3. Provides information on Japan and KU to academic and students in Taiwan
 4. Strengthens networks of alumni and relevant affiliates in Taiwan
 5. Supports other international engagements of KU in Taiwan

Address: Southern Taiwan University of Science and Technology (STUST) Office of International Affairs (W804), No. 1, NanTai Street, Yongkang Dist., Tainan City 71005, Taiwan R.O.C



Kumamoto University Liaison Office in Tanzania

タンザニアオフィス

Established: October 2020

- Scope:
1. Service as a base of joint research in Tanzania and Sub-Saharan Africa
 2. Promotes Faculty, staff and student exchange programs in Tanzania and Sub-Saharan Africa
 3. Builds networks of alumni and relevant people in Tanzania and Sub-Saharan Africa

Address: Office of Research and Publications, Muhimbili University of Health and Allied Sciences, 9 United Nations road, Upanga, Dar es Salaam, Tanzania



Six National Universities Network (SUN) Changchun Joint Office

国立六大学長春共同事務所

As a first joint office of Six National Universities Network (SUN) which consists of Chiba University, Niigata University, Kanazawa University, Okayama University, Nagasaki University and Kumamoto University.

Established: November 2014

- Scope:
1. Provides information regarding Japan and SUN to students and the faculty of partner institutions in northeastern China
 2. Builds networks of alumni and other relevant people in northeastern China
 3. Strengthens the relationship with other partner institutions in northeastern China
 4. Promotes SUN's various activities in northeastern China

Address: Jingyue Campus of Northeast Normal University, Changchun, Jilin, China
TEL: +8615543288200



Six National Universities Network (SUN) European Platform of SixERS

国立六大学欧州事務所

Established as a joint office of six national universities

(Chiba Univ., Niigata Univ., Kanazawa Univ., Okayama Univ., Nagasaki Univ. and Kumamoto Univ.)

Established: August 2016

- Scope:
1. The dissemination of information on academic and cultural ties between Japan and the Netherlands
 2. The promotion of partnerships with interuniversity networks and international joint educational platforms in the Netherlands and EU
 3. The collection of information on local universities
 4. The dissemination of information on Japan and the six national universities to students and academic staff of local universities
 5. The implementation and operation of six national university joint programs

Address: SieboldHuis 5th floor, Rapenburg 19, 2311 GE Leiden, The Netherlands



Six National Universities Network (SUN) ASEAN Platform of SixERS

国立六大学バンコク事務所

Established as the joint office of six national universities

(Chiba Univ., Niigata Univ., Kanazawa Univ., Okayama Univ., Nagasaki Univ. and Kumamoto Univ.)

Established: July 2017

- Scope:
1. The dissemination of information on academic and cultural ties between Japan
 2. ASEAN countries Dissemination of information on Japan and the six universities to students and academic staff in Thailand and other ASEAN countries
 3. Promotion of international industryacademiagovernment collaborative programs in Thailand and other ASEAN countries
 4. Promotion of exchanges with ASEAN University Network (AUN) member universities

Address: KMUTT Knowledge Exchange for Innovation Center (KX) 12F
110/1 Krung Thonburi Road, Banglamphulang,
Khlonsan, Bangkok 10600, Thailand



KUMAMOTO UNIVERSITY CAMPUS MUSEUM · HISTORICAL ARCHITECTURE

The main building of the former Fifth High School, now the Memorial Museum, is the symbol of Kumamoto University. The building has been designated as a National Important Cultural Property, along with the Chemical Laboratory, the Front Gate, and the Museum of the Engineering Faculty. We also preserve the tangible cultural properties of the Yamazaki Memorial Hall on the Honjo campus and the Kumayaku Museum on the Oe campus. We are planning to create the "Kumamoto University Campus Museum," which will consist of these buildings and artifacts.

The Memorial Museum of the Fifth High School

五高記念館

(National Important Cultural Property)



The Fifth High school was established for young boys as the most prominent educational institution in Kyushu in 1887. Jigoro Kano, Yakumo Koizumi (Lafcadio Hearn) as well as Soseki Natsume were among the more celebrated professors who taught here. Even after 130 years, the original Fifth High School building is still well-maintained and very much appreciated by the public.

<http://www.goko.kumamoto-u.ac.jp/en/>

The Front Gate (The Red Gate)

表門 (赤門)

(National Important Cultural Property)



The front gate of the Fifth High School is popularly known as the Red Gate (AKAMON) and is still the dignified main gate of the north campus of Kumamoto University.

The Chemical Laboratory of the Fifth High School

化学実験場

(National Important Cultural Property)



This building was used as the lab for chemical experiments. There is a row of labs as well as a tiered lecture hall with a corridor situated on the west side.

The Museum of the Engineering Faculty

工学部研究資料館

(National Important Cultural Property)



This building was constructed in 1908 as a machine shop for students of the former Kumamoto Junior College of Technology. The exhibits include various machines and tools still in working condition. The public is welcome to visit the museum during Open Campus Days, and the University Festival.

INTERNATIONAL COLLABORATIONS

Since being selected for the “Program for Promoting the Enhancement of Research Universities” by the Ministry of Education, Culture, Sports, Science and Technology (MEXT) in 2013, we have established international collaborative research groups for life sciences, natural sciences, and humanities and social sciences to globalize and strengthen our research activities. Under the management of top professors in each research group, we invite researchers from abroad, recruit talented young researchers, regularly hold international seminars, establish overseas joint laboratories, and do much more.

Institutions Collaborating with Kumamoto University (2014-2023)

Kumamoto University is currently working with 1,821 international institutions and we actively promote new collaborations to deliver quality research.



Top 10 Institutional Collaborations by Number of Publications

Rank	Name	Number of Publications	Country
1	Harvard University	137	USA
2	National University of Singapore	111	SINGAPORE
3	Universite Paris Cite	100	FRANCE
4	University of Sydney	97	AUSTRALIA
5	University of Oxford	82	ENGLAND
6	University of Southern California	78	USA
7	Asia University Taiwan	68	TAIWAN
8	Universite Paris Saclay	62	FRANCE
9	Sorbonne Universite	60	FRANCE
10	University College London	59	ENGLAND

Clarivate Analytics InCites BA (Organization Type: Academic)

[Name of Project] **A Leading University Cultivating Global Leaders from Kumamoto**

[Future Vision of the University Planned in TGU Project]

Kumamoto University is open, compatible, and mobile

Introducing an internationally standardized education system offering compatibility and mobility

Kumamoto University is a regional globalization

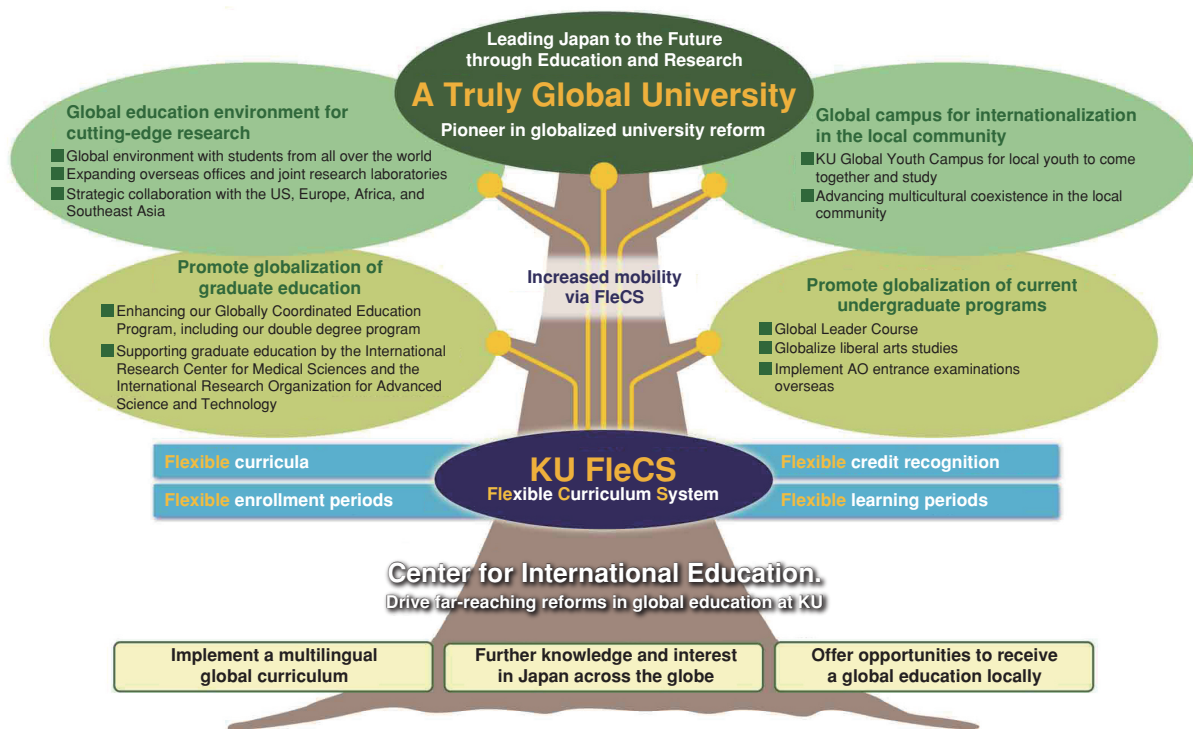
Promoting regional human resources, supplying innovative talent who can help advance a technology-oriented nation

Kumamoto University continually improves, researches, and develops

Enriching an advanced education system and research activities

[Summary of Project] Through this project, we aim to become a truly global university by implementing various educational reforms. To that end, we will contribute to the globalization of the local community as a globally competitive research hub with the following 4 targets:

- ① An education system highly conducive to internationalism
- ② Global atmosphere for the inclusion of international students
- ③ Strengthened and globalized graduate education to support cutting-edge research
- ④ Global campus as a driving force for internationalization in the local community



169 Global Leader Course

Total Number of students enrolled in the Global Leader Course (2023 academic year)

To promote the globalization of undergraduate education, a Global Leader Course has been established in four existing academic divisions (Faculty of Letters, Law, Science, and Engineering). The Course began in April 2017 and 169 participants are registered for the 2023 academic year. The Course centers on material from the "GOKOH School Program," which inherited the traditions and spirit of The Fifth High School (located on the grounds of Kumamoto University before its founding). The Course endows global leaders with experience and a broad, multicultural, world-embracing mindset that equips them to thrive in the 21st-century global society.



1719 Expansion of global education

Number of students enrolled in liberal arts courses taught in English (2021 academic year)

A "Multidisciplinary Studies" department was newly established in 2017 to provide liberal arts courses in English for all international and Japanese students. Focusing on liberal arts education with an international basis, and taught mainly by foreign lecturers, classes were offered in English on 39 themes in 10 subject areas in 2021. A total of 1719 students enrolled.



391 Broad expansion of the Kumamoto University Global Youth Campus Program

Number of participants in the Kumamoto University Global Youth Campus Program (2022 academic year)

For regional high school, technical college and other students, programs and events designed to spark an interest in global education before university enrollment are being developed. These provide opportunities for global education and deepen the students' understanding of and interest in global interaction. Besides activities held at the University such as "Meet & Greet Study-Abroad Students" (high school students interact with University students who studied abroad), foreign teaching staff and international students are also sent outside the University to interact with SSH (Super Science High school), local high school and technical college students through various activities, in 2022, 391 students participated in these programs.



INITIATIVES TO DEVELOP PROMINENT RESEARCH

■ Kumamoto University Challenging Research Projects ■ めばえ研究推進事業NEO

Bold research projects with the potential for revolutionizing established concepts and changing the direction of academia fall within the framework of Kumamoto University Challenging Research Projects. These programs aim to revitalize research that may represent the future of Kumamoto University and are funded for one year.

Project	Project Leader
Impact of technological innovations focusing on the interdependence of power and transport systems on disaster vulnerability	ANDO Hiroe
Effect of Random Arrangement of Cations in Spinel Ferrite on Oxidation Reaction	INOMATA Yusuke
Studies on the “Epoch of Poets and Thinkers” in Germany	EKI Toshiro
Development of a platform for multi-omics data analysis	ETOH Kan
Invention of a new design method of tissue vascular network for tailor-made regenerative medicine	OMATA Seiji
Elucidation and control of the mechanisms of organ aging based on altered mitochondrial homeostasis	KADOMATSU Tsuyoshi
Investigation for pathological mechanism of pulmonary diseases by analyzing epigenetic gene regulation in endothelial cells via cross-talk with pathological epithelial cells	KAMEI Shunsuke
Development of an instrument playing support robot for education and welfare	KOUTAKI Gou
Establishment of the innovative new treatment strategy for gastrointestinal cancer by radiogenomics	KOSUMI Keisuke
2D Metal-Organic Framework (MOF) Superstructures with Exotic Electronic & Electrochemical Properties	ZHANG Zhongyue
Development of polar switching molecules by hydrogen bonding assembly	SEKINE Yoshihiro
Elucidation of the mechanisms of anti-tumor effect of butyrate-producing gut microbe and development of a novel cancer therapy targeting gut microbiome in advanced lung cancer	TOMITA Yusuke
Resolving reproductive crisis by targeting cross-species sperm capacitation regulators	NAKAO Satohiro
Amniotic Fluid Metabolomics including Modified Nucleoside Measurements to Elucidate the Pathogenesis of Infection-Related Preterm Birth	NAGAYOSHI Yu
Ex utero embryo rotation culture unveils inter-organ crosstalk in mouse organogenesis	NITA Akihiro
Development of barrier films using epoxy carbon nanosheets	HATAKEYAMA Kazuto
Establishment of novel mouse model of heart failure with preserved ejection fraction (HFpEF) and elucidation of a mechanism of HFpEF	HANATANI Shinsuke
Turn motivation on with light	HITORA Natsuko
New Therapeutic Strategies Targeting Macrophages for intractable mycobacterial infection	YANO Hiromu

■ Cross Frontier Research Project ■ クロス・フロンティア研究推進事業

The Cross Frontier Research Project supports basic research by research teams aiming to create new value and achieve breakthroughs by incorporating findings and methodologies from different research areas.

Project	Project Leader
Development of biomicroenvironmental dynamics by digital image analysis and computational fluid dynamics	ARIMA Yuichiro
Visualizing and quantifying of nucleus epithermal growth factor receptor in multidrug resistance breast cancer	LEE Ruda
An integrated understanding of the circulating tumor cells and cancer assisted fibroblasts in bloodstream	KITAMURA Yusuke
Reinvigoration of depopulated areas by development of international standard to evaluate SATOYAMA landscape	SAWA Shinichiro
Understanding of brain chimerism, a principle coupling organ aging	TAKIZAWA Hitoshi
Artificial intelligence-driven discovery of pharmaceutical and agricultural chemicals from natural sources	HITORA Yuki
Elucidating the biological effects of “invisible” force through active collaboration between medicine and engineering	MOROISHI Toshiro
Research on scientific communication about infectious diseases based on the case studies of Hansen’s disease, HIV / AIDS, and Covid-19	YAHATA Hideyuki

IDA Shintaro,
Institute of Industrial
Nanomaterials



2D materials but not with ordinary materials. Since nanosheets are obtained by exfoliating layered materials, Dr. Ida says that it is possible to impart various properties into the nanomaterials, such as electrical conductivity, semiconductor properties, or the ability for protons and ions to pass through the material. Currently, he is concentrating on semiconductor nanosheets with photocatalyst functionality, i.e., breaking water into hydrogen and oxygen using only sunlight. Since hydrogen does not emit CO₂ when burned, it can be used as a fuel to help reduce CO₂ emissions. Now however, fossil fuels are the main source of hydrogen so the discovery of an effective photocatalyst could lead to the development of an energy system independent of fossil fuels.

Nanosheet Photocatalysts for Hydrogen Production

The Institute of Industrial Nanomaterials (IINa) is focused on the development of functional two-dimensional (2D) nanomaterials and surface/grain boundary materials created under extreme conditions. IINa maintains the only explosion testing facility in Japan and an exceptional pulsed power testing facility, and is highly experienced at creating materials under extreme conditions. 2D nanomaterials have attracted significant worldwide attention due to their excellent material properties, and it is expected that to be that an entirely new industries will be established.

Professor Shintaro Ida's research investigates functional 2D materials with a thickness of only one nm (one billionth of a meter) at the molecular level. His work focuses on the functional materials and application of the two-dimensional nanosheets synthesized from various elements of the periodic table. He is also investigating special structures that can be created using

NIWA Hitoshi,
Institute of Molecular
Embryology and Genetics



information exchange sessions every month. Through these interactions, we keep ourselves well-informed about the latest technologies and trends in NGS analysis.

Beyond the confines of your institute, we actively disseminate our research findings and seek international collaborations, leveraging our extensive research network. To this end, we generously support young researchers in presenting their work at international conferences and co-organizing workshops and symposiums at national academic gatherings. We even offer partial assistance with publication fees and open access costs for papers where young researchers take the lead as first authors or corresponding authors.

In the fiscal year 2023, we have extended invitations to researchers affiliated with collaborative research centers, inviting them to participate in a retreat Aso. This retreat serves as a platform for young researchers to exchange research outcomes and foster lasting connections. Through these initiatives, we aim to strengthen information sharing and fortify a robust network for cutting-edge research.

International Research Enhancement Project for Stem Cell Biology and Developmental Medicine

International Advanced Research Σ Project at IMEG is on a mission to delve deeper into developmental medicine and stem cell biology, while enhancing the institute's global presence. We are dedicated to conducting comprehensive research, ranging from unraveling the fundamental principle of development biology to exploring medical applications. We promote the activities of the High-Depth Omics Research Center, established in 2022, and also prioritize the education of young researchers in this field.

We provide specialized support for single-cell RNA-seq, ChIP-seq, ATAC-seq, mass spectrometry, and data analysis through our team of skilled professionals at the Research Support Facility within IMEG. To encourage productive discussion within our institute, we regularly organize Next-Generation Sequencing (NGS) roundtable talks and

UENO Takamasa,
Joint Research Center for
Human Retrovirus Infection



Also, in collaboration with the newly reformed Educational Program for Advanced Research in Infectious Diseases and AIDS, this program intends to enhance capacity-building opportunities, and thereby junior-level scientists and graduate students can be self-standing and globally visible. Collectively, we will contribute to constructing a distinguishable platform that fosters leading-edge research and education in HIV/AIDS field through our expanding inter-continental academic/education partnerships.

International Research Center Aiming at the Control of AIDS

Over 35 million people are still living with HIV-1 infection, and nearly two million people die of AIDS-related illnesses each year in the world. In addition, among developed countries, our country has been experiencing increased incidences of HIV-1 infection. Thus, HIV/AIDS remains a substantial threat to the global health, and developing an HIV vaccine and therapies to cure HIV/AIDS have still been a global challenge. New program "International Research Center Aiming at the control of AIDS" intends to enhance and expand international research and education core based on the framework of the successfully implemented global COE "Global Education and Research Center Aiming at the Control of AIDS" Program over the five years. To do this, we reorganize our mission to make a substantial effort to research studies leading to the development of (1) new therapies to cure HIV/AIDS and (2) an HIV/AIDS vaccine.

KAWAMURA Yoshihito,
Magnesium Research Center



generation Mg alloys that have an excellent balance of mechanical performance, non-flammability, and corrosion resistance under the "KUMADAI Mg" name. The MRC has three key goals, (1) provide state-of-the-art research and education, (2) help the development and use of KUMADAI Mg alloys into actual applications, and (3) establish a global research network to significantly enhance collaboration with universities, research institutes, and industries from around the world.

International Research Core for Advanced Magnesium Alloys

Currently there is a high demand in the transportation industry for light-weight structural components to reduce both energy consumption and CO₂ emissions. Magnesium is the lightest structural metal and Mg alloys are now used in a wide range of applications for structural and functional benefits. In addition, biodegradable Mg biomedical devices can provide impactful benefits for people's well-being.

The Magnesium Research Center (MRC) at Kumamoto University, established in December 2011, has been engaging in various Mg-related research endeavours including alloy and process design, physical metallurgy fundamentals, mechanical metallurgy, corrosion, surface treatment, and recycling. The MRC has developed several advanced new

INTERNATIONAL EXCHANGE AGREEMENTS

chart 1 LISTS OF INTER-UNIVERSITY EXCHANGE AGREEMENTS

136 partner institutions (43 countries and regions)

(As of May 1, 2023)

Country	University/ Institute	Since	Country	University/ Institute	Since
Australia	The University of Newcastle	1986	Korea	Pukyong National University	2011
Australia	Queensland University of Technology	2014	Korea	University of Seoul	2011
Australia	University of Technology Sydney	2017	Korea	Ajou University	2011
Azerbaijan	Baku State University	2019	Korea	Chungbuk National University	2012
Bangladesh	University of Dhaka	2000	Korea	Pusan National University	2012
Burkina Faso	University Ouaga I Professor Joseph KI-ZERBO	2016	Korea	Chonbuk National University	2012
Cambodia	Royal University of Phnom Penh	2016	Korea	Hannam University	2016
Canada	University of Alberta	2001	Kyrgyz	Kyrgyz-Turkish Manas University	2022
Canada	McGill University	2016	Laos	National University of Laos	2011
Czech	University of Bohemia	2019	Latvia	Riga Technical University	2018
China	Guangxi Normal University	2005	Malaysia	University Sains Malaysia	2012
China	Tongji University	2005	Malaysia	Universiti Putra Malaysia	2018
China	Dalian University of Technology	2006	Mexico	Autonomous University of Nuevo León	2017
China	Nanchang University	2006	Mongol	Mongolian University of Life Sciences	2018
China	Shanghai Normal University	2008	Myanmar	Yangon Technological University	2015
China	Harbin Institute of Technology	2009	Myanmar	Patheingyi University	2016
China	Jilin University	2009	Nepal	Pokhara University	2010
China	Nankai University	2009	New Zealand	Massey University	1996
China	Shandong University	2009	Philippines	University of the Philippines, Diliman	2002
China	Sichuan University	2009	Philippines	University of the Philippines Los Baños	2015
China	Northeastern University	2010	Philippines	Ateneo de Manila University	2016
China	Beijing University of Technology	2011	Poland	University of Warsaw	2009
China	Shenzhen University	2011	Poland	Lublin University of Technology	2015
China	The University of Macau	2011	Romania	University of Bucharest	2015
China	East China University of Political Science and Law	2011	Russia	Kazan Federal University	2021
China	Jilin Institute of Chemical Technology	2013	Rwanda	University of Rwanda	2014
China	Northeast Normal University	2014	Slovenia	University of Maribor	2016
China	Chongqing University	2014	Spain	University of Valencia	2014
China	Nanjing Normal University	2015	Spain	University of Santiago de Compostela	2018
China	Guilin University of Technology	2015	Spain	Valladolid University	2018
China	Anhui University	2015	Sudan	University of Khartoum	2020
China	Wuhan University of Technology	2016	Taiwan	Southern Taiwan University of Science and Technology	2008
China	Guangxi Medical University	2018	Taiwan	National Tsing Hua University	2015
China	Fuzhou University Zhicheng College	2019	Taiwan	National University of Kaohsiung	2016
China	Beijing Institute of Technology	2019	Taiwan	Chang Jung Christian University	2016
Congo	University of Mbuji-Mayi	2015	Taiwan	Fisheries Research Institute, Council of Agriculture	2020
Djibouti	Djibouti University	2013	Tanzania	Muhimbili University of Health and Allied Sciences	2015
Egypt	Suez Canal University	2006	Thailand	Kasetsart University	1994
Egypt	Fayoum University	2008	Thailand	Khon Kaen University	2004
Egypt	Ain Shams University	2019	Thailand	Mahidol University	2013
France	Bordeaux Institute of Technology	2006	Thailand	Burapha University	2017
France	University of Bordeaux	2007	Thailand	Chiang Mai University	2018
France	Aix-Marseille University	2016	Thailand	Chulalongkorn University	2019
France	University Bordeaux Montaigne	2017	Thailand	Mae Fah Luang University	2020
Germany	Saarland University	2001	Thailand	Chulabhorn Research Institute, Chulabhorn Graduate Institute	2022
Germany	Heinrich Heine University Düsseldorf	2017	Turkey	Ege University	2000
Germany	Hochschule für Technik und Wirtschaft Berlin	2018	Turkey	Canakkale Onsekiz Mart University	2015
Germany	RWTH Aachen University	2020	UK	Durham University	1993
Hungary	Pázmány Péter Catholic University	2015	UK	University of Birmingham	1993
India	Indian Institute of Technology Bombay	2018	UK	University of Leeds	2006
India	Indian Institute of Science	2022	USA	The University of Montana	1987
Indonesia	The Consortium of Institut Teknologi Sepuluh Nopember, Indonesia (Institut Teknologi Sepuluh Nopember, Universitas Sam Ratulangi, Universitas Mataram, Universitas Cenderawasih, Universitas Nusa Cendana)	2008	USA	Montana State University	1987
Indonesia	Institut Teknologi Bandung	2011	USA	Virginia Commonwealth University	1989
Indonesia	Gadjah Mada University	2013	USA	University of North Carolina at Charlotte	1990
Indonesia	Airlangga University	2013	USA	Texas Tech University	1994
Indonesia	Udayana University	2015	USA	The University of Texas at San Antonio	2010
Indonesia	University of Indonesia	2016	USA	University of Massachusetts Boston	2016
Indonesia	University of Brawijaya	2016	USA	The University of Georgia	2017
Indonesia	State Islamic University of Sunan Ampel Surabaya	2018	USA	Wright State University	2017
Ireland	Waterford Institute of Technology	2018	USA	University of Alaska Anchorage	2018
Italy	University of Padova	2018	Vietnam	VNU University of science	2007
Korea	Pai Chai University	1999	Vietnam	Ho Chi Minh City University of Technology	2010
Korea	Dong-A University	2005	Vietnam	Hue University	2010
Korea	Korea Advanced Institute of Science and Technology	2006	Vietnam	National University of Civil Engineering	2010
Korea	Chosun University	2009	Vietnam	University of Social Sciences and Humanities, Vietnam National University, Hanoi	2016
			Vietnam	University of Languages and International Studies, VNU	2016
			Vietnam	Foreign Trade University	2016

INTERNATIONAL EXCHANGE AGREEMENTS

chart **2** **LISTS OF INTER-DEPARTMENT EXCHANGE AGREEMENTS**
141 partner institutions (41 countries and regions)

(As of May 1, 2023)

Country	University / Institute	Counterpart	Since
Australia	Division of Materials Engineering, The University of Queensland	Magnesium Research Center	2013
Australia	Australian Phenomics Facility, The Australian National University	Institute of Resource Development and Analysis	2014
Australia	Faculty of Engineering, Architecture and Information Technology (EAIT), The University of Queensland	Institution of Industrial Nanomaterials	2018
Australia	The Commonwealth Scientific and Industrial Research Organisation	Faculty of Advanced Science and Technology, International Research Organization for Advanced Science and Technology	2019
Austria	Faculty of Philological and Cultural Studies, University of Vienna	Kumamoto Innovative Development Organization	2016
Bangladesh	Faculty of Engineering and Technology, Faculty of Science, Noakhali Science And Technology University	Faculty of Advanced Science and Technology, Graduate School of Science and Technology	2018
Brazil	Technological Institute of Aeronautics	Faculty of Engineering, Graduate School of Science and Technology, Faculty of Advanced Science and Technology	2017
Cambodia	University of Health Sciences, Cambodia	School of Pharmacy, Graduate School of Pharmaceutical Sciences	2016
Canada	Queen's University at Kingston	Faculty of Engineering, Graduate School of Science and Technology, Faculty of Advanced Science and Technology	2014
Canada	University of Calgary, Schulich School of Engineering	Graduate School of Science and Technology, Faculty of Advanced Science and Technology	2016
China	Chinese Academy of Medical Sciences	School of Medicine	1983
China	Harbin Medical University	School of Medicine, Faculty of Life Sciences, Graduate School of Medical Sciences, Graduate School of Pharmaceutical Sciences	1999
China	College of Civil Engineering & Architecture, School of Chemistry & Chemical Engineering, Guangxi University	Faculty of Engineering, Graduate School of Science and Technology, Faculty of Advanced Science and Technology	2007
China	College of Engineering, Peking University	Faculty of Engineering, Graduate School of Science and Technology, Faculty of Advanced Science and Technology	2008
China	Wenzhou Medical University	Faculty of Life Sciences	2008
China	School of Foreign Languages, Hangzhou Normal University	Faculty of Letters, Graduate School of Social and Cultural Sciences	2010
China	Civil Engineering College, Municipal and Environmental Engineering College, Transportation Engineering College, Graduate School, Shenyang Jianzhu University	Faculty of Engineering, Graduate School of Science and Technology, Faculty of Advanced Science and Technology	2010
China	School of Medicine, Zhejiang University	School of Medicine, Faculty of Life Sciences, Graduate School of Medical Sciences	2010
China	National Institutes for Food and Drug Control	Institute of Resource Development and Analysis	2012
China	Center for Public Policy and Governance, Shanghai Jiao Tong University	Kumamoto Innovative Development Organization	2013
China	School of Tourism and City Administration, Zhejiang Gongshang University	Faculty of Engineering, Graduate School of Science and Technology, Faculty of Advanced Science and Technology	2015
China	Key Laboratory of Chemistry of Northwestern Plant Resources, Chinese Academy of Sciences (CAS), Lanzhou Institute of Chemical Physics (LICP)	Graduate School of Science and Technology, Faculty of Advanced Science and Technology	2018
China	School of Medicine, Department of Laboratory Animal Sciences, Shanghai Jiao Tong University	Institute of Resource Development and Analysis	2018
China	Xi'AN University of Technology, Graduate School and Faculty of Mechanical and Precision Instrument Engineering	Faculty of Advanced Science and Technology, Faculty of Engineering, and Graduate School of Science and Technology	2020
China	Nanning Health School	Faculty of Life Sciences	2020
Congo	School of Pharmaceutical Sciences, University of Kinshasa	School of Pharmacy, Graduate School of Pharmaceutical Sciences, Faculty of Life Sciences	2019
Czech	Technical University of Ostrava and Institute of Geonics of the Academy of Sciences of the Czech Republic	Faculty of Engineering, Graduate School of Science and Technology, Faculty of Advanced Science and Technology	2009
Czech	University of Chemistry and Technology, Prague	Graduate School of Science and Technology	2010
Czech	University of Pardubice	Faculty of Science, Faculty of Engineering, Graduate School of Science and Technology, Faculty of Advanced Science and Technology	2015
Czech	Institute of Physics, Academy of Sciences of Czech Republic	Faculty of Engineering, Graduate School of Science and Technology, Faculty of Advanced Science and Technology	2015
Czech	Faculty of Mathematics and Physics, Charles University	Magnesium Research Center	2018
Czech	Faculty of Mathematics and Physics, Charles University	Graduate School of Science and Technology, Faculty of Advanced Science and Technology	2019
Denmark	Faculty of Humanities, University of Copenhagen	Faculty of Humanities and Social Sciences, Faculty of Letters, Center for International Education	2018
Egypt	Faculty of Pharmaceutical Sciences and Pharmaceutical Industries, Future University in Egypt	School of Pharmacy, Graduate School of Pharmaceutical Sciences, Faculty of Life Sciences	2019
France	University of Clermont Auvergne	Faculty of Science, Faculty of Engineering, Graduate School of Science and Technology, Faculty of Advanced Science and Technology	2010
France	University Joseph Fourier - Grenoble I	Faculty of Engineering, Graduate School of Science and Technology, Faculty of Advanced Science and Technology	2011
France	École nationale supérieure des mines de Saint-Étienne	Faculty of Science, Faculty of Engineering, Graduate School of Science and Technology, Faculty of Advanced Science and Technology	2012
France	CRM2 Laboratory, University of Lorraine	Faculty of Science, Graduate School of Science and Technology, Faculty of Advanced Science and Technology	2014
France	Institut Pasteur	Institute of Resource Development and Analysis	2015
France	Faculty of Sciences and Engineering, Toulouse III Paul Sabatier	Faculty of Engineering, Graduate School of Science and Technology, Faculty of Advanced Science and Technology, Faculty of Science	2018
France	University of Côte d'Azur and Institute Sophia Agrobiotech (ISA)	Faculty of Advanced Science and Technology, International Research Center for Agricultural & Environmental Biology	2021
France	University of Clermont Auvergne, Engineering Sciences, University School of Physics and Engineering	Faculty of Science, Faculty of Engineering, Graduate School of Science and Technology, Faculty of Advanced Science and Technology	2021
Germany	Faculty of Arts, University of Bonn	Faculty of Letters	1997
Germany	Leibniz Institute for Applied Geophysics	Graduate School of Science and Technology, Faculty of Advanced Science and Technology	2013
Germany	Department of Civil and Environmental Engineering, Ruhr-University Bochum	Faculty of Engineering, Graduate School of Science and Technology, Faculty of Advanced Science and Technology	2014
Germany	Faculty of Georesources and Materials Engineering, Institute of Physical Metallurgy and Metal Physics, RWTH Aachen University	Faculty of Engineering, Graduate School of Science and Technology, Faculty of Advanced Science and Technology	2015
Germany	Institute of Physics of Faculty of Mathematics and Natural Sciences, University of Rostock	Faculty of Science, Graduate School of Science and Technology, Faculty of Advanced Science and Technology	2017
Germany	Faculty for Chemistry and Pharmacy, Würzburg University	Faculty of Engineering, Graduate School of Science and Technology, Faculty of Advanced Science and Technology	2018
Germany	Department of Chemistry, Philipps-University Marburg	Faculty of Science, Graduate School of Science and Technology, Faculty of Advanced Science and Technology	2018

Country	University / Institute	Counterpart	Since
Germany	TU Bergakademie Freiberg, Faculty of Mechanical, Process and Energy Engineering	Faculty of Engineering, Graduate School of Science and Technology, Faculty of Advanced Science and Technology	2018
Germany	Faculty of Science, Eberhard Karls University of Tübingen	Faculty of Engineering, Graduate School of Science and Technology, Faculty of Advanced Science and Technology	2019
Germany	Karlsruhe Institute of Technology	Faculty of Engineering, Graduate School of Science and Technology, Faculty of Advanced Science and Technology	2019
Germany	RWTH Aachen University, Faculty of Civil Engineering	Faculty of Engineering, Graduate School of Science and Technology	2021
Hungary	Eötvös Loránd University, Bárczi Gusztáv Faculty of Special Needs Education	Faculty of Education	2020
India	Faculty of Engineering & Technology, Annamalai University	Faculty of Engineering, Graduate School of Science and Technology, Faculty of Advanced Science and Technology, Institution of Industrial Nanomaterials	2006
India	Manipal University	Faculty of Engineering, Graduate School of Science and Technology, Faculty of Advanced Science and Technology	2009
India	National Institute of Technology Karnataka	Faculty of Engineering, Graduate School of Science and Technology, Faculty of Advanced Science and Technology	2009
India	Alva's Institute of Engineering & Technology	Faculty of Engineering, Graduate School of Science and Technology, Faculty of Advanced Science and Technology	2017
India	Mangalore Institute of Technology and Engineering	Faculty of Engineering, Graduate School of Science and Technology, Faculty of Advanced Science and Technology	2018
Indonesia	Electrical Engineering School, Graduate School, Telkom University	Faculty of Engineering, Graduate School of Science and Technology, Faculty of Advanced Science and Technology	2014
Indonesia	Faculty of Engineering, Hasanuddin University	Faculty of Engineering, Graduate School of Science and Technology, Faculty of Advanced Science and Technology	2015
Indonesia	Faculty of Industrial Technology, Islamic University of Indonesia	Faculty of Engineering, Graduate School of Science and Technology, Faculty of Advanced Science and Technology	2017
Indonesia	Faculty of Engineering, Universitas Negeri Surabaya	Faculty of Advanced Science and Technology	2020
Indonesia	Faculty of Pharmacy, University of Padjadjaran	Faculty of Life Sciences, School of Pharmacy, Graduate School of Pharmaceutical Sciences	2020
Iran	Faculty of Biological Sciences, Alzahra University	Faculty of Advanced Science and Technology, Graduate School of Science and Technology, Institution of Industrial Nanomaterials	2022
Italy	The University of Brescia	Faculty of Engineering, Graduate School of Science and Technology, Faculty of Advanced Science and Technology	2020
Kenya	School of Humanities and Social Sciences, Pwani University	Faculty of Letters, Graduate School of Social and Cultural Sciences	2015
Korea	Advanced Process and Materials R&BD Group, Korea Institute of Industrial Technology	Faculty of Engineering, Graduate School of Science and Technology, Faculty of Advanced Science and Technology	2003
Korea	College of Health Science, Korea University / Department of Bio-convergence engineering, Korea University Graduate School	School of Medicine, Faculty of Life Sciences, Graduate School of Health Sciences	2007
Korea	College of Engineering, Korea Maritime and Ocean University	Faculty of Engineering, Graduate School of Science and Technology, Faculty of Advanced Science and Technology	2011
Korea	Graduate School of Kosin University and College of Natural Science, Kosin University	Faculty of Science, Faculty of Engineering, Graduate School of Science and Technology, Faculty of Advanced Science and Technology	2011
Korea	College of Engineering, Yonsei University	Faculty of Engineering, Graduate School of Science and Technology, Faculty of Advanced Science and Technology	2013
Korea	Laboratory Animal Resource Center, Korea Research Institute of Bioscience and Biotechnology	Institute of Resource Development and Analysis	2013
Korea	Light Metal Division, Korea Institute of Materials Science	Magnesium Research Center	2014
Korea	College of Natural Sciences, Teachers' College, Kyungpook National University	Faculty of Science, Graduate School of Science and Technology, Faculty of Advanced Science and Technology	2014
Korea	Magnesium Technology Innovation Center, Seoul National University	Magnesium Research Center	2015
Korea	College of Health Science and Institute of Biomedical Engineering, Yonsei University at Wonju	Faculty of Advanced Science and Technology, International Research Organization for Advanced Science and Technology	2018
Korea	Center for Advanced Aerospace Materials (CAAM), Pohang University of Science and Technology (POSTECH)	Magnesium Research Center	2020
Korea	Department of Marine Science and Convergence Engineering, BK Educational Research Center, Hanyang University	Graduate School of Science and Technology, Faculty of Advanced Science and Technology, Center for Water Cycle, Marine Environment, and Disaster Management	2021
Korea	College of Engineering, Future and Fusion Lab of Architectural, Civil and Environmental Engineering, Korea University	Graduate School of Science and Technology, Faculty of Advanced Science and Technology, Center for Water Cycle, Marine Environment, and Disaster Management	2022
Kyrgyz	Institute of Chemistry and Chemical Technology of National Academy of Science of the Kyrgyz Republic	Institution of Industrial Nanomaterials	2014
Laos	Faculty of Engineering, Souphanouvong University	Faculty of Engineering, Graduate School of Science and Technology, Faculty of Advanced Science and Technology	2017
Malaysia	Universiti Teknologi PETRONAS	Faculty of Science, Faculty of Engineering, Graduate School of Science and Technology, Faculty of Advanced Science and Technology	2012
Malaysia	Centre for Environmental Sustainability and Water Security, University Technology Malaysia	Center for Water Cycle, Marine Environment, and Disaster Management	2018
Malaysia	Earth Observation Centre, Institute of Climate Change, Universiti Kebangsaan Malaysia	Center for Water Cycle, Marine Environment, and Disaster Management	2019
Malta	The Center for Molecular Medicine and Biobanking, University of Malta	Faculty of Life Sciences, Graduate School of Medical Sciences, School of Medicine	2019
Mongol	School of Mathematics and Computer Science, National University of Mongolia	Faculty of Science, Graduate School of Science and Technology, Faculty of Advanced Science and Technology	2013
Mongol	Mongolian University of Science and Technology	Faculty of Engineering, Graduate School of Science and Technology, Faculty of Advanced Science and Technology	2016
Myanmar	Mandalay Technological University	Faculty of Engineering, Graduate School of Science and Technology, Faculty of Advanced Science and Technology	2015
Netherlands	Faculty of Engineering Technology, University of Twente	Faculty of Engineering, Graduate School of Science and Technology, Faculty of Advanced Science and Technology	2015
Philippines	College of Engineering, De La Salle University-Manila	Faculty of Engineering, Graduate School of Science and Technology, Faculty of Advanced Science and Technology, Institution of Industrial Nanomaterials	2011
Philippines	Mindanao State University-Iligan Institute of Technology	Faculty of Life Sciences, School of Pharmacy, Graduate School of Pharmaceutical Sciences	2020
Poland	Faculty of Materials Science and Ceramics, AGH University of Science and Technology	Graduate School of Science and Technology, Faculty of Advanced Science and Technology	2010
Republic of South Africa	School of Pharmacy and Faculty of Natural Sciences, University of the Western Cape	School of Pharmacy, Graduate School of Pharmaceutical Sciences, Faculty of Life Sciences	2018
Russia	Aircraft and Mechanical Engineering Faculties, Novosibirsk State Technical University	Institution of Industrial Nanomaterials	2008
Russia	Institute of Advanced Technologies, Togliatti State University	Magnesium Research Center	2015

Country	University / Institute	Counterpart	Since
Singapore	Cancer Science Institute of Singapore (CSI), National University of Singapore	International Research Center for Medical Sciences	2017
Spain	The Spanish National Research Council	Institute of Resource Development and Analysis	2018
Switzerland	Institute of Asian and Oriental Studies, Department of Japanology, University of Zurich	Faculty of Letters, Graduate School of Social and Cultural Sciences	2016
Switzerland	School of Biology, Faculty of Biology and Medicine, University of Lausanne	Faculty of Advanced Science and Technology, Graduate School of Science and Technology, Faculty of Science, International Research Organization for Advanced Science and Technology	2018
Switzerland	Faculty of Science, University of Geneva	Faculty of Science, Graduate School of Science and Technology, Faculty of Advanced Science and Technology	2019
Taiwan	College of Engineering, College of Electrical Engineering and Computer Science, National Kaohsiung First University of Science and Technology	Faculty of Engineering, Graduate School of Science and Technology, Faculty of Advanced Science and Technology	2009
Taiwan	National Laboratory Animal Center	Institute of Resource Development and Analysis	2010
Taiwan	College of Foreign Languages and Literatures, Tamkang University	Faculty of Letters, Graduate School of Social and Cultural Sciences	2013
Taiwan	College of Mechanical and Electrical Engineering, National Taipei University of Technology	Faculty of Engineering, Graduate School of Science and Technology, Faculty of Advanced Science and Technology	2014
Taiwan	Tatung University, College of Electrical Engineering and Computer Science	Faculty of Engineering, Graduate School of Science and Technology, Faculty of Advanced Science and Technology	2017
Taiwan	School of Law, Soochow University	Faculty of Law, Graduate School of Social and Cultural Sciences, Faculty of Humanities and Social Sciences	2017
Taiwan	School of Law, Fu Jen Catholic University	Faculty of Humanities and Social Sciences, Faculty of Law, Graduate School of Social and Cultural Sciences	2018
Taiwan	Department of Materials Science and Engineering, National Taiwan University	Magnesium Research Center	2018
Taiwan	College of Health Sciences and Technology, National Central University	Faculty of Life Sciences	2018
Taiwan	Center for Micro/Nano Science and Technology, National Cheng Kung University	Magnesium Research Center	2019
Taiwan	College of Design, National Yunlin University of Science and Technology	Faculty of Life Sciences	2019
Taiwan	Takming University of Science and Technology	Faculty of Education	2022
Thailand	Faculty of Engineering, King Mongkut's Institute of Technology Ladkrabang	Faculty of Engineering, Graduate School of Science and Technology, Faculty of Advanced Science and Technology	2014
Thailand	Faculty of Allied Health Sciences, Naresuan University	Faculty of Life Sciences, Graduate School of Health Sciences	2016
Thailand	King Mongkut's University of Technology Thonburi, The Joint Graduate School of Energy and Environment	Graduate School of Science and Technology, Faculty of Advanced Science and Technology	2016
Thailand	Faculty of Science and Technology, Thammasat University	Faculty of Engineering, Graduate School of Science and Technology, Faculty of Advanced Science and Technology	2018
Thailand	Faculty of Engineering and Industrial Technology, Silpakorn University	Graduate School of Science and Technology, Faculty of Advanced Science and Technology	2018
Thailand	Faculty of Medicine, Prince of Songkla University	Faculty of Life Sciences, Joint Research for Humana Retrovirus Infection	2019
Thailand	King Mongkut's University of Technology Thonburi Welding Research and Consulting Center	Magnesium Research Center	2019
Turkey	Engineering Faculty, Cankiri Karatekin University	Faculty of Engineering, Graduate School of Science and Technology, Faculty of Advanced Science and Technology	2015
Turkey	Faculty of Engineering, Graduate School of Natural and Applied Science, Gazi University	Faculty of Engineering, Graduate School of Science and Technology, Faculty of Advanced Science and Technology	2015
Turkey	Kilis 7 Aralik University	School of Pharmacy, Graduate School of Pharmaceutical Sciences	2017
Turkey	Anadolu University	Faculty of Life Sciences, School of Pharmacy, Graduate School of Pharmaceutical Sciences	2017
UK	Mary Lyon Centre, MRC Harwell	Institute of Resource Development and Analysis	2011
UK	The School of Engineering, University of Glasgow	Institution of Industrial Nanomaterials	2014
UK	School of Metallurgy and Materials, The University of Birmingham	Graduate School of Science and Technology	2018
Uruguay	Institut Pasteur de Montevideo	Institute of Resource Development and Analysis	2017
USA	College of Engineering, Georgia Institute of Technology	Faculty of Engineering, Graduate School of Science and Technology, Faculty of Advanced Science and Technology	1996
USA	The Jackson Laboratory	Institute of Resource Development and Analysis	2004
USA	Mouse Biology Program, University of California, Davis	Institute of Resource Development and Analysis	2013
USA	Center for Inflammation, Immunity & Infection, Georgia State University	Faculty of Life Science, Graduate School of Pharmaceutical Sciences, School of Pharmacy	2013
USA	Michigan State University	Faculty of Advanced Science and Technology, International Research Organization for Advanced Science and Technology	2018
USA	Virginia Institute of Marine Science (VIMS), College of William and Mary	Center for Water Cycle, Marine Environment and Disaster Management	2019
USA	Board of Trustees, University of Florida	Magnesium Research Center	2020
USA	The University of New Mexico (UNM) College of Pharmacy	Faculty of Life Sciences, School of Pharmacy, Graduate School of Pharmaceutical Sciences	2020
Vietnam	Vietnam Institute of Geosciences and Mineral Resources, Ministry of National Resources and Environment	Faculty of Science, Graduate School of Science and Technology, Faculty of Advanced Science and Technology	2007
Vietnam	Danang University of Technology	Faculty of Engineering, Graduate School of Science and Technology, Faculty of Advanced Science and Technology	2008
Vietnam	Vietnam National Museum of Nature, Vietnam Academy of Science and Technology	Graduate School of Science and Technology, Faculty of Advanced Science and Technology	2012
Vietnam	Institute of Marine Geology and Geophysics, Vietnam Academy of Science and Technology	Graduate School of Science and Technology, Faculty of Advanced Science and Technology	2017
Vietnam	National Centre for Hydrometeorological Forecasting, Vietnam Meteorological and Hydrological Administration	Center for Water Cycle, Marine Environment and Disaster Management	2021

INTERNATIONAL EXCHANGE AGREEMENTS

chart **3** Changes in Numbers of Partner Institutions (As of May 1, 2023)

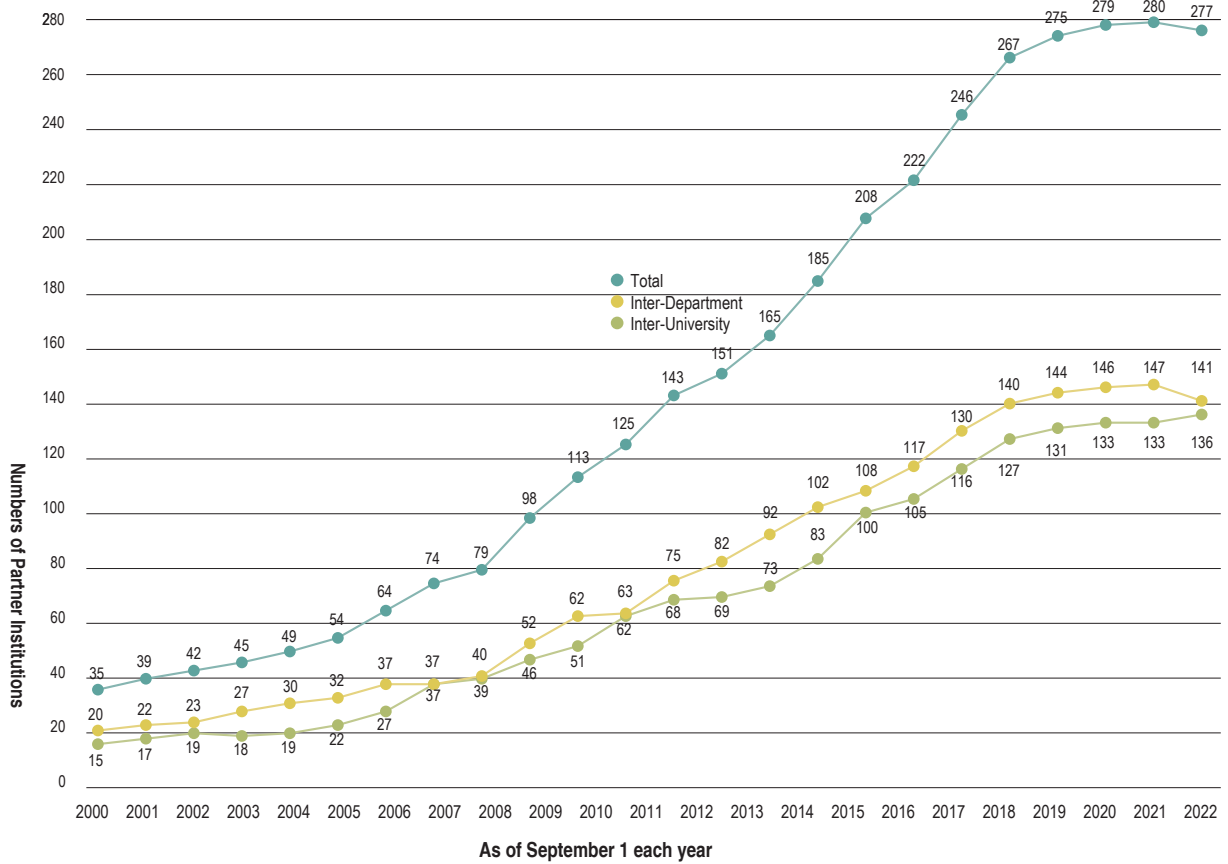
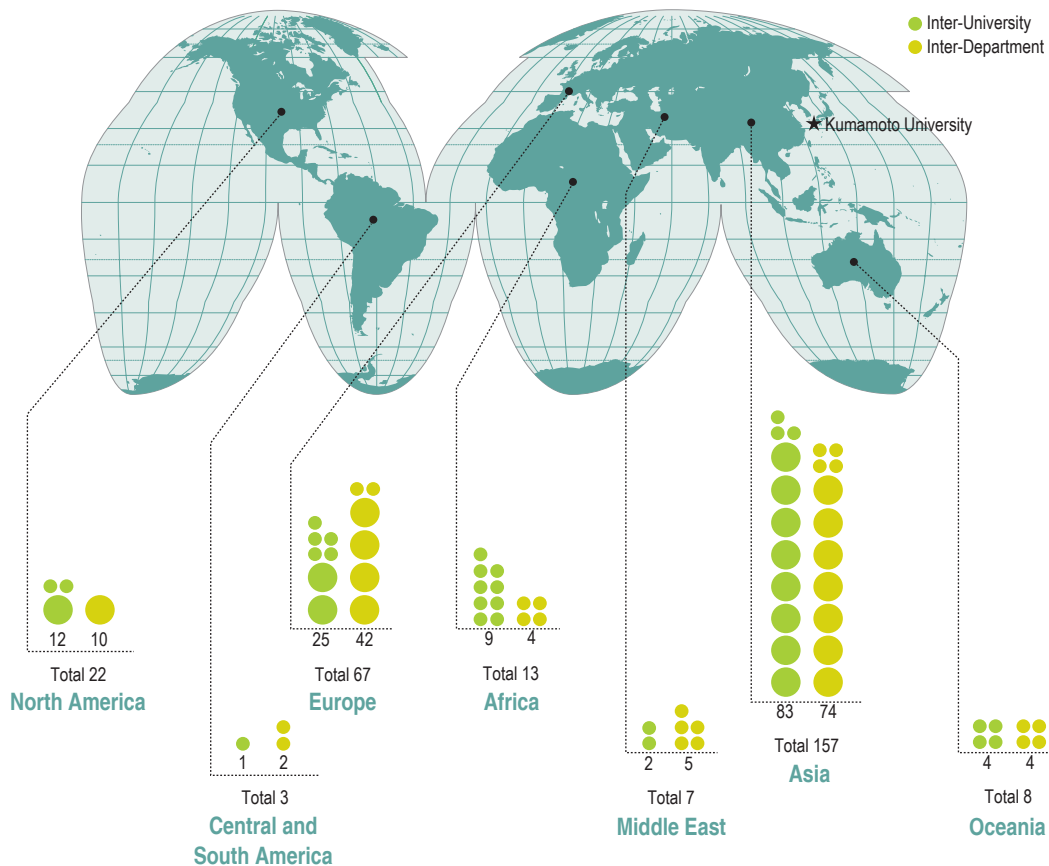


chart **4** WORLD MAP WITH THE NUMBERS OF PARTNER INSTITUTIONS



RESEARCHERS AND SCHOLARS EXCHANGES

(FY2022)

Region	Country	University Staff Sent Abroad	Visiting Foreign Researchers
Asia	Bangladesh	0	8
	Cambodia	0	0
	China	1	52
	India	4	7
	Indonesia	4	17
	Kazakhstan	0	1
	Korea	28	50
	Laos	1	0
	Malaysia	2	5
	Mongol	0	2
	Myanmar	0	1
	Nepal	0	2
	Philippines	2	4
	Singapore	11	0
	Sri Lanka	0	5
	Taiwan	9	7
	Thailand	28	21
Vietnam	5	9	
Sub-total		95	191
Middle East	Iran	0	1
	Israel	1	1
	Turkey	3	3
	United Arab Emirates	2	0
	Sub-total		6
Africa	Egypt	0	8
	Ethiopia	1	0
	Nigeria	0	1
	South Africa	1	2
	Sudan	1	2
	Tanzania	2	0
	Sub-total		5
Oceania	Australia	12	23
	Micronesia	1	0
	New Zealand	3	1
	Sub-total		16
North America	Canada	3	1
	USA	82	39
	Sub-total		85
South-Middle America	Brazil	1	0
	Chile	0	1
	Costa Rica	0	1
	Mexico	1	0
	Peru	0	0
	Sub-total		2

Region	Country	University Staff Sent Abroad	Visiting Foreign Researchers
Europe	Austria	1	1
	Azerbaijan	0	0
	Belgium	0	2
	Croatia	0	0
	Cyprus	0	0
	Czech	1	7
	Denmark	2	1
	Finland	1	0
	France	18	39
	Germany	20	14
	Greece	1	1
	Hungary	5	2
	Iceland	0	0
	Italy	5	7
	Kyrgyz	0	2
	Latvia	0	0
	Lithuania	2	5
	Malta	0	1
	Netherlands	2	0
	Norway	2	0
	Poland	5	0
	Portugal	1	0
	Russia	0	2
	Slovakia	0	0
	Slovenia	0	2
	Spain	13	4
	Sweden	4	1
	Switzerland	5	1
	UK	36	9
	Ukraine	0	3
Sub-total		124	104
Total		333	379

INTERNATIONAL STUDENTS

(As of May 1, 2023)

Region	Status Country	Faculties					Graduate Schools					Japanese Language Trainees	Total
		Undergraduates	Research Students	Auditors	Special Auditors	Sub-total	Graduates	Research Students	Special Auditors	Special Research Students	Sub-total		
Asia	Bangladesh					0	18				18		18
	China	12	9		12	33	191	24	1	9	225		258
	India	1				1	1				1		2
	Indonesia					0	29		1	1	31		31
	Korea	6			9	15	4				4		19
	Lao People's Democratic Republic					0	1				1		1
	Malaysia	6			1	7	3				3		10
	Mongol	4				4	4				4		8
	Myanmar				1	1	9			1	10		11
	Taiwan				2	2				1	1		3
	Thailand				1	1	17			3	20		21
	Vietnam				3	3	5		1		6		9
	Sub-total	29	9	0	29	67	282	24	3	15	324	0	391
Middle East	Afghanistan					0	6				6		6
	Iran					0	4				4		4
	Oman					0	2				2		2
		Sub-total	0	0	0	0	0	12	0	0	0	12	0
South-Middle America	Mexico					0	1				1		1
		Sub-total	0	0	0	0	0	1	0	0	0	1	0
Africa	Benin					0		1			1		1
	Chad					0	1				1		1
	Djibouti					0	1				1		1
	Egypt					0	9				9		9
	Ethiopia					0	1				1		1
	Ghana					0	5				5		5
	Kenya					0	3				3		3
	Malawi					0	1				1		1
	Mauritania					0	2				2		2
	Nigeria					0	2				2		2
	Sudan					0	2				2		2
	Tanzania					0	6				6	1	7
	Zimbabwe					0		1			1		1
		Sub-total	0	0	0	0	0	33	2	0	0	35	1
Europe	Armenia					0	2				2		2
	Austria					0	1				1		1
	Czech					0			1		1		1
	France				2	2			2	3	5		7
	Germany				5	5	1		1		2		7
	Kazakhstan					0	2				2		2
	Kyrgyz					0			1		1		1
	Malta					0	1				1		1
	North Macedonia					0					0	1	1
	Slovenia					0			1		1		1
	Spain					0	1				1		1
	Swiss				3	3					0		3
	UK				1	1					0		1
		Sub-total	0	0	0	11	11	8	0	6	3	17	1
Oceania	Australia				3	3	1				1		4
	New Zealand				1	1				0			1
	Vanuatu					0	1			1			1
		Sub-total	0	0	0	4	4	2	0	0	2	0	6
Total (From 45 countries)		29	9	0	44	82	338	26	9	18	391	2	475

JAPANESE STUDENTS ABROAD

The table below shows the number of students who have studied abroad at overseas universities with which Kumamoto University has concluded a student exchange agreement, or have otherwise mutually agreed on a student exchange. (The period of study abroad is not indicated)

Due to COVID-19, some students participated in online classes offered at partner universities.

(Reference) April 2022- March 2023

Country	Partner University	Number of Students
Ireland	South East Technological University	4
Australia	University of Technology Sydney	2
NZ	Massey University	10
UK	Durham University	3
UK	University of Leeds	10
UK	Bangor University	6
France	Universite Bordeaux Montaigne	2
USA	The University of Montana	1
USA	Montana State University	5
Germany	Universität Bonn	2
Germany	Albert-Ludwigs-Universität Freiburg	1
Denmark	University of Copenhagen	1
Taiwan	Chang Jung Christian University	2
Vietnam	Foreign Trade University	1
Malaysia	University Sains Malaysia	1
Total(April 2022 - March 2023)		51

OVERSEAS FOREIGN LANGUAGE TRAINING PROGRAM

While expanding the number of partner universities that students can attend for foreign-language training during spring and summer breaks, we are striving for greater differentiation among destinations to provide students with diverse study-abroad opportunities. Partners include Montana State University (USA), the University of Alberta (Canada), the University of Leeds (England), the University of Freiburg (Germany), Massey University (New Zealand) and additional destinations in the Americas, Europe, Southeast Asia and other locations are being planned. The program not only immerses students in a foreign language, but also provides them with an opportunity to experience the unique culture of the host country.

INTERNATIONAL PROGRAMS

Kumamoto University Short-Term Exchange Program

The Kumamoto University Short-Term Exchange Program is designed for full-time foreign undergraduate students of universities that have a student exchange agreement with Kumamoto University. The program offers courses on Japanese language, Japanese and Asian society and culture, and advanced science and technology. At Kumamoto University, there are both half- and full-year programs, and students retain full-time student status at their home universities. This program encourages promotion of cultural and academic interactions between Kumamoto University and partner universities' students.

• E Course

Students in this course mainly take Short-Term Exchange Program classes taught in English, and Japanese language classes if the students' Japanese language level meets the class level.

• J Course*

Students in this course mainly take Japanese language classes and specialized undergraduate classes offered by each faculty. General Education classes and Short-Term Exchange Program classes taught in English are also available.



Kumamoto University Japanese Studies Program

This is a one-year program intended for Japanese Studies Program students who are MEXT** scholarship recipients. The purpose of the program is to teach the skills that are important for Japanese studies and research, and to encourage development of perspectives that take the broad approaches to Japanese culture and language needed to live in society.



JAPANESE LANGUAGE CLASSES

The Center for International Education offers the following Japanese language classes for international students and researchers at Kumamoto University.

- Japanese language classes
- Intensive Japanese courses (non-credit) open to MEXT** scholarship students and Teacher-Training students.
- Japanese Language Course for Beginners (non-credit) designed for Kumamoto University international students, researchers, and their spouses.



*The prerequisite for language proficiency is N2 level.

** Ministry of Education, Culture, Sports, Science and Technology (Japan)

KUMAMOTO UNIVERSITY SUMMER PROGRAM

At Kumamoto University, we offer a short-term study program in Kumamoto for undergraduate students from our partner universities – the program is held in late July and early August.

This program is designed to provide an opportunity for undergraduate students from overseas partner universities to enjoy a short stay in Kumamoto while deepening their interest and understanding of life in Japan, as well as the natural and scientific aspects of Kumamoto and Kumamoto University.

Over the course of the 10-day program, participants enjoy lectures from professors at Kumamoto University, educational excursions to Minamata, Mt. Aso, and Kumamoto Castle, first-hand cultural experiences, and an international exchange event with local high school students.

All participating students give positive reviews of their experiences, with many expressing their gratitude at being given the opportunity to come to Japan, and an interest in returning to Kumamoto University to study in the future.



DOUBLE DEGREE PROGRAMS

Through the cultivation and revitalization of relationships with overseas partner universities, we have established and continue to develop a high-quality student framework that includes 27 unique double-degree exchange programs. These efforts both enhance the global learning environment for Japanese students and attract outstanding international students from overseas.

Lists of Double Degree Programs

Kumamoto University	Country	University / Institute	Counterpart	Course	Since
Graduate School of Science and Technology	Indonesia	Institut Teknologi Sepuluh Nopember (ITS)	Graduate Program	Master's / Doctoral	(M)2013 / (D)2008
		Institut Teknologi Bandung	Graduate School	Master's / Doctoral	(M)2020 / (D)2012
		Universitas Hasanuddin	Faculty of Engineering	Master's / Doctoral	(M)2023 / (D)2023
	Korea	Pai Chai University	Graduate School	Doctoral	2012
	Malaysia	Universiti Teknologi PETRONAS	Centre for Graduate Studies	Doctoral	2019
	Philippines	De La Salle University	Gokongwei College of Engineering	Master's / Doctoral	(M)2016 / (D)2016
	Taiwan	Southern Taiwan University of Science and Technology	College of Engineering	Master's / Doctoral	(M)2015 / (D)2009
		National Kaohsiung First University of Science and Technology	College of Engineering	Master's / Doctoral	(M)2017 / (D)2009
	France	University of Bordeaux	Department of Sciences and Technologies	Doctoral	2015
		Blasé Pascal University		Doctoral	2015
Université de Lorraine			Doctoral	2016	
Poland	AGH University of Science and Technology	Faculty of Materials Science and Ceramics	Doctoral	2010	
Kyrgyz	Kyrgyz-Turkish Manas University	Graduate School of Natural and Applied Sciences	Master's / Doctoral	(M)2022 / (D)2022	
Graduate School of Medical Sciences	Thailand	Mahidol University	Faculty of Medicine Siriraj Hospital	Doctoral	2017
		Khon Kaen University	Faculty of Medicine	Doctoral	2017
		Chiang Mai University	Faculty of Medicine	Doctoral	2019
		Chiang Mai University	Faculty of Associated Medical Science	Doctoral	2020
		Prince of Songkla University	Faculty of Medicine	Doctoral	2020
	Malta	University of Malta	Centre for Molecular Medicine & Biobanking	Doctoral	2021
	China	Shandong University	Cheeloo College of Medicine	Doctoral	2022

Latest Information ⇒ https://www.kumamoto-u.ac.jp/en/about/publication-educational-information/11_double_degree_program/

INTERNATIONAL PROJECTS AND ACTIVITIES

International symposium by the Center for International Education

In December 2022, a symposium on the theme of “Gender-Inclusive Society” was held at the Center for International Education. The symposium included keynote lectures by guest lecturers from Japan and abroad, group sessions with our multinational faculty, our students including those from the Global Leader Course, and students from overseas partner universities, and poster presentations by students. It provided a good opportunity to experience educational activities provided by the Center for International Education.



From the Symposium Flyer

Kumamoto University Global Advisory Board meeting

In June 2022, a meeting of the FY2022 Kumamoto University Global Advisory Board was held to exchange opinions with experts from Japan and abroad on the global strategy of the university. The meeting was held via the web due to the coronavirus infection control measures. Participants from Japan (Hiroshima and Tokyo), overseas (U.S. and Turkey), and Kumamoto had a lively exchange of opinions.

Members from outside the university provided valuable opinions and advice about the future global strategy of Kumamoto University based on its efforts, evaluation results, and response status in the Top Global University Project.



Global Advisory Board Meeting

Kumamoto University Global Youth Campus

Kumamoto University Global Youth Campus project provides high school and junior high school students with classes in English and opportunities to interact with international students.

In FY2022, students from Kumamoto Prefectural Seiseiko High School joined summer training, in which they worked on project study with international students. Students from Shiiba Junior High School, Miyazaki Prefecture, participated in upskilling training, in which they interacted with international students and delivered a speech in English about their dreams for the future. A total of more than 390 high school students and technical college students.

We have established close cooperative relationships with local high schools and other organizations, which has helped us to achieve great results in the penetration and expansion of early global education in the local community.



Summer Training

TICAD8 Official Side Event

In September 2022, an online international symposium entitled “Health-Related Quality of Life and Well-being by Drug Development and African Traditional Medicines” was held. This symposium was held as an official side event of the 8th Tokyo International Conference on African Development (TICAD8) held in August 2022, jointly hosted by Kumamoto University and the NGO Rocinantes. So far, we have made various efforts to improve public health and promote healthier lives in Africa through the safe and secure utilization of traditional African medicines in collaboration with educational institutions in Africa. This symposium focused on drug discovery and the utilization of traditional African medicines in modern Africa. A panel discussion was held between Japanese and African healthcare experts to examine the current issues and consider a new action plan to solve the problems facing the continent. On the day of the symposium, it was streamed live on YouTube Japanese and English channels, with a maximum of 634 and 520 viewers, respectively.



From the Flyer

President	OGAWA Hisao, M.D., Ph.D.		
Board Members	Executive Vice-Presidents	TOMIZAWA Kazuhito, D.D.S., Ph.D.	OTANI Jun, Ph.D. USAGAWA Tsuyoshi, D.Eng. MIZUMOTO Toyofumi, M.A.
	Executive Secretary-General	KURONUMA Ichiro	
	Executive Director	MIYAO Chikako	
Auditors	WATANABE Keiko TATEISHI Kazuhiro		
Vice-Presidents	BABA Hideo, M.D., Ph.D. KANAOKA Shogo, D.Eng. SHIMIZU Kiyoyuki, Ph.D. ICHIKAWA Fusao, D.Sc. KISHIDA Mitsuyo, Ph.D. MAEDA Hitomi, RN, Ph.D.		
Advisor	HISHIYAMA Yutaka, Ph.D.		
Special Advisor	MARUYAMA Youji, M.P.P.		
Faculty of Letters	Dean	ITOH Masahiko, D.Lit.	
Center for Soseki and Hearn Studies	Director	ARAI Hidenaga, D. Lit.	
International Research Center for Manga Studies	Director	ITOH Masahiko, D.Lit.	
Faculty of Education	Dean	FUJITA Yutaka, Ph.D.	
Center for Educational Research and School Development	Director	YAMASHIRO Chiaki, Ph.D.	
Affiliated School	General Director	IFUKU Hiroto, Ph.D.	
Kindergarten Attached to the Faculty of Education	Principal	SUZUKI Mako, B.A.	
Elementary School Attached to the Faculty of Education	Principal	NAKANO Hiroyuki, B.A.	
Junior High School Attached to the Faculty of Education	Principal	YAMAMOTO Kazuo, B.A.	
Special Support School Attached to the Faculty of Education	Principal	TOSHIDA Kazuko, B.A.	
Faculty of Law	Dean	OBINATA Nobuharu, Ph.D.	
Center for Education and Research on Law and Public Policy	Director	OBINATA Nobuharu, Ph.D.	
Faculty of Science	Dean	FUJIMOTO Hitoshi, D.Sc.	
School of Medicine	Dean	OIKE Yuichi, M.D., Ph.D.	
School of Pharmacy	Dean	MORIOKA Hiroshi, Ph.D.	
Faculty of Engineering	Dean	TSUREKAWA Sadahiro, D.Eng.	
Engineering Research Equipment Center	Director	MATSUDA Motohide, D.Eng.	
Education Center for Global Human Resources in Engineering	Director	IHARA Toshihiro, Ph.D.	
Graduate School of Education	Dean	FUJITA Yutaka, Ph.D.	
Faculty of Humanities and Social Sciences	Dean	OBINATA Nobuharu, Ph.D.	
International Research Center for Humanities and Social Sciences (IRCHSS)	Director	NAKAGAWA Teruhiko, M.A.	
Faculty of Advanced Science and Technology	Dean	TSUREKAWA Sadahiro, D.Eng.	
Innovative Research and Education Center for Engineers in Kumamoto University	Director	TSUREKAWA Sadahiro, D.Eng.	
International Research Center for Agricultural and Environmental Biology	Director	SAWA Shinichiro, D.Sc.	
Faculty of Life Sciences	Dean	OIKE Yuichi, M.D., Ph.D.	
Southern Kyushu and Okinawa Unit Center of Japan Environment and Children's Study	Director	KATOH Takahiko, M.D., Ph.D.	
Center for Medical Education and Research	Director	NAKAMURA Kimitoshi, M.D., Ph.D.	
Center for Metabolic Regulation of Healthy Aging	Director	YAMAGATA Kazuya, M.D., Ph.D.	
Global Center for Natural Resources Sciences	Director	MISUMI Shogo, Ph.D.	
Center for Biomedical Laboratory Science	Director	OBAYASHI Konen, M.D., Ph.D.	
Vaccine Development Research Center	Director	MORIOKA Hiroshi, Ph.D.	
Graduate School of Social and Cultural Sciences	Dean	KASHIMA Hiroshi, Ph.D.	
Graduate School of Science and Technology	Dean	FUJIMOTO Hitoshi, D.Sc.	
Global Joint Education Center for Science and Technology	Director	FUJIMOTO Hitoshi, D.Sc.	
Graduate School of Medical Sciences	Dean	OIKE Yuichi, M.D., Ph.D.	
Graduate School of Health Sciences	Dean	OBAYASHI Konen, M.D., Ph.D.	
Graduate School of Pharmaceutical Sciences	Dean	MORIOKA Hiroshi, Ph.D.	
Institute of Molecular Embryology and Genetics	Director	NIWA Hitoshi, M.D., Ph.D.	
Center for Organ Regeneration Research	Director	NISHINAKAMURA Ryuichi, M.D., Ph.D.	
Research Center for High Depth Omics	Director	ISHIGURO Kei-ichiro, D. Sc.	
Institute of Industrial Nanomaterials	Director	IDA Shintaro, D.Eng.	
University Hospital	Director	BABA Hideo, M.D., Ph.D.	
Priority Organization for Innovation and Excellence	Director	OGAWA Hisao, M.D., Ph.D.	
Kumamoto Innovative Development Organization	Director	OTANI Jun, Ph.D.	
Organization for Globalization	Director	OTANI Jun, Ph.D.	
Headquarters for Admissions and Education	Director	USAGAWA Tsuyoshi, D.Eng.	
Mathematical Science Education Center	Director	USAGAWA Tsuyoshi, D.Eng.	
Center for International Education	Director	USAGAWA Tsuyoshi, D.Eng.	
Center for Teacher Education and Development	Director	USAGAWA Tsuyoshi, D.Eng.	
Institute of Light Metals	Director	KAWAMURA Yoshihito, Ph.D.	
Research and Education Institute for Semiconductors and Informatics	Director	OGAWA Hisao, M.D., Ph.D.	
Center for Management of Information Technologies	Director	SUGITANI Kenichi, D.Eng.	
International Research Center for Medical Sciences	Director	TAKIZAWA Hitoshi, Ph.D.	
International Research Organization for Advanced Science and Technology	Director	TAKASHIMA Kazuki, D. Eng.	
The Memorial Museum of the Fifth High School	Director	MISAWA Jun, M.Lit.	
EISEI-BUNKO Research Center	Director	INABA Tsuguharu, D.Lit.	
Center for Water Cycle, Marine Environment, and Disaster Management	Director	KAKIMOTO Ryuji, Ph.D.	
Magnesium Research Center	Director	KAWAMURA Yoshihito, Ph.D.	
Institute of Resource Development and Analysis	Director	ARAKI Kimi, D.Sc.	
Environmental Safety Center	Director	TOGAWA Kenichi, D.Ecs.	
Research Center for Buried Cultural Properties	Director	ARAI Hidenaga, D. Lit.	
Joint Research Center for Human Retrovirus Infection	Deputy Director	UENO Takamasa, Ph.D.	
University Library	Director	MIYAZAKI Chikashi, Ph.D.	
Health Care Center	Director	FUJISE Noboru, M.D., Ph.D.	
Student Accessibility Support Room	Director	FUJISE Noboru, M.D., Ph.D.	
University Archives	Director	MIYAZAKI Chikashi, Ph.D.	
Institutional Research Office	Director	OTANI Jun, Ph.D.	
Campus Design Office	Director	TANAKA Tomoyuki, D.Arch.	

Number Of University Personnel

(As of May 1, 2023)

Classification	Professors	Associate Professors	Lecturers (Full-time)	Assistant Professors	Research Assistant	Teachers (Attached School)	Sub-total	Administrative and Technical Staff	Total
Faculty of Education						85	85		85
Graduate School of Education	33	25	1				59		59
Faculty of Humanities and Social Sciences	48	63	3	1	1		116		116
Faculty of Advanced Science and Technology	85	60	2	28			175		175
Faculty of Life Sciences	75	48	16	84			223	3	226
Institute of Molecular Embryology and Genetics	11	5	4	7			27		27
Institute of Industrial Nanomaterials	9	9		2			20		20
Kumamoto University Hospital	15	11	32	131			189	1,169	1358
Priority Organization for Innovation and Excellence	1	6		3			10		10
Kumamoto Innovative Development Organization	5	1		1			7		7
Headquarters for Admissions and Education	4	5	1	2			12		12
International Research Center for Medical Sciences	4	6	1				11	9	20
International Research Organization for Advanced Science and Technology	1	4					5		5
Organization for Globalization	1						1		1
Research and Education Institute for Semiconductors and Informatics	9	9		1			19		19
The Memorial Museum of the Fifth High School		1					1		1
Eisei-Bunko Research Center	1	1					2		2
Center for Water Cycle, Marine Environment, and Disaster Management	6	5		3			14		14
Magnesium Research Center	5	4		2			11		11
Institute of Resource Development and Analysis	4	2	1	2			9		9
Environmental Safety Center		1					1		1
Research Center for Buried Cultural Properties		1		2			3		3
Joint Research Center for Human Retrovirus Infection	6	2	2	1			11		11
Health Care Center	1	1		1			3	2	5
Technical Division							0	82	82
Administration Bureau							0	462	462
Total	324	270	63	271	1	85	1014	1727	2741

STUDENT ENROLLMENT

(As of May 1, 2023)

■ Undergraduate Students ■

Faculty and School	Number	
Letters	765	489
Education	973	628
Law	886	438
Science	838	227
Medicine	1,309	688
Pharmacy	500	226
Engineering	2,329	460
Total	7,600	3,156

■ Graduate Students ■

Faculty and School	Master	Master of Ed.	Doctor
Education	1 0	50 23	—
Social and Cultural Sciences	163 79	—	60 27
Science and Technology	961 161	—	135 31
Medical Sciences	29 14	—	392 121
Health Sciences	42 27	—	32 25
Pharmaceutical Sciences	72 32	—	77 26
Total	1,268 313	50 23	696 230

■ Diploma Course ■

Faculty and School	Number	
Diploma Course in Special Needs Education	14	9

■ Special Course ■

Faculty and School	Number	
Yogo Teacher Training	44	43

■ Attached Schools ■

Classification	Number	
Elementary School	641	321
Junior High School	474	238
Special Support School	59	21
Kindergarten	115	59
Total	1,289	639

*Colored figures indicate the number of females included in the figures.

STUDENT FINANCIAL AID

■ Japanese Students ■

(The 2022 School Year)

Classification		Japanese Government Scholarship	Other Scholarships	Total
Undergraduate Students		4,545	134	4,679
Graduate Students	Master	444	20	464
	Doctor	40	7	47
	Master of Ed.	16	3	19
Total		5,045	164	5,209

■ International Students ■

(The 2022 School Year)

Classification		Japanese Government Scholarship	Other Scholarships	Total
Undergraduate Students		3	44	47
Graduate Students		97	84	181
Japanese Language Trainees		4	0	4
Total		104	128	232

■ Undergraduate Students ■

Faculty and School	Admission Quota	Applicants	Newly Enrolled Students
Letters	170	497 (4)	175 —
Education	220	535 (4)	233 —
Law	210	621 (3)	211 —
Science	200	714 (3)	207 (1)
Medicine	110	432 (1)	110 —
Health Sciences	144	354 —	150 —
Pharmacy	90	339 (3)	96 —
Engineering	513	1,071 (9)	532 —
Total	1,657	4,563 (27)	1,714 (1)

* () Number indicates privately funded entrance exam students from overseas (included in total)

■ Graduate Students ■

Faculty and School	Admission Quota	Applicants	Newly Enrolled Students
Education	30	27 —	24 —
Social and Cultural Sciences	Master	108 (37)	70 (18)
	Doctor	23 (5)	12 (1)
Science and Technology	Master	551 (18)	464 (14)
	Doctor	36 —	32 —
Medical Sciences	Master	16 (2)	15 (2)
	Doctor	78 (15)	73 (13)
Health Sciences	Master	18 (1)	17 (1)
	Doctor	3 —	2 —
Pharmaceutical Sciences	Master	41 (1)	35 (1)
	Doctor	25 (1)	25 (1)
Total	806	926 80	769 (51)

* () Number indicates privately funded entrance exam students from overseas (included in total)

■ Diploma Course ■

Admission Quota	Applicants	Newly Enrolled Students	
Diploma Course in Special Needs Education	15	15	14

■ Special Course ■

Admission Quota	Applicants	Newly Enrolled Students	
Yogo Teacher Training Special Course	40	79	44

STUDENT TUITIONS AND FEES

(As of May 1, 2023 / Unit: yen)

	Entrance exam fee	Admission fee	Tuition fees
Undergraduate Students	17,000	282,000	535,800 / year
Graduate Students	30,000	282,000	535,800 / year
Research Students	9,800	84,600	29,700 / month
Auditing students*	9,800	28,200	14,800 / credit

* Includes non-degree course students

DEGREES AWARDED

(The 2022 School Year)

■ Master's Degree ■

Classification	Course Completion	
	2022.4-2023.3	Total
Master of Arts	15	1,182
Master of Education	—	1,300
Master of Law	3	496
Master of Public Policy	6	107
Master of Medical Sciences	26	393
Master of Health Sciences	15	184
Master of Nursing	5	84
Master of Pharmaceutical Sciences	33	1,930
Master of Clinical Pharmacy	—	76
Master of Health Life Science	—	40
Master of Science	77	2,832
Master of Engineering	320	11,315
Master of Philosophy	9	164
Master of Science in Instructional Systems	13	195
Total	522	20,298

■ Professional Degree ■

Classification	Course Completion	
	2022.4-2023.3	Total
Master of Education	38	111
Juris Doctor	—	189
Total	38	300

■ Doctoral Degree ■

Classification	Old System	New System			
		Course Completion		Thesis Submission	
		2022.4-2023.3	Total	2022.4-2023.3	Total
Doctor of Literature	—	—	86	1	24
Doctor of Public Policy	—	1	25	—	4
Doctor of Laws	—	—	9	—	0
Doctor of Science	—	9	257	—	32
Doctor of Engineering	—	19	783	—	110
Doctor of Philosophy	—	16	448	—	21
Doctor of Medical Sciences	1,663	45	2,442	15	1,077
Doctor of Health Sciences	—	3	23	—	2
Doctor of Nursing	—	—	4	—	0
Doctor of Pharmaceutical Sciences	—	15	397	1	169
Doctor of Clinical Pharmacy	—	—	7	—	0
Doctor of Life Sciences	—	—	27	—	6
Doctor of Philosophy in Health Life Science	—	—	4	—	0
Total	1,663	108	4,512	17	1,445

AFTER GRADUATION

(As of May, 2023)

■ Undergraduate Students ■

Faculty and School	Number of Graduates	Number of Continuing Higher Education	Number of Employed	Others
Letters	178	10	149	19
Education	240	16	208	16
Law	205	20	174	11
Science	193	112	75	6
Medicine	263	15	128	120
Pharmacy	85	37	47	1
Engineering	515	345	155	15
Total	1,679	555	936	188

■ Graduate Students ■

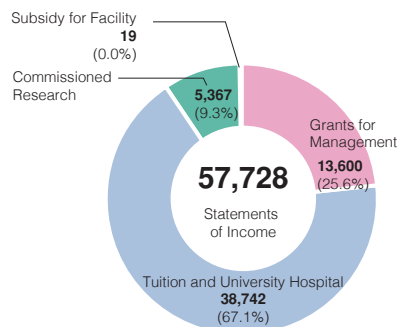
Faculty and School		Number of Graduates	Number of Continuing Higher Education	Number of Employed	Others
Education	Master	0	0	0	0
Social and Cultural Sciences	Master	44	6	27	11
	Doctor	10	0	7	3
Science and Technology	Master	399	27	359	13
	Doctor	36	0	27	9
Medical Sciences	Master	26	9	13	4
	Doctor	54	0	41	13
Health Sciences	Master	20	2	17	1
	Doctor	3	0	3	0
Pharmaceutical Sciences	Master	33	17	16	0
	Doctor	16	0	14	2
Master of Education	Doctor	38	1	35	2
Total		679	62	559	58

BUDGET BREAKDOWN

■ Statements of Income (FY2023) ■

Unit: million yen

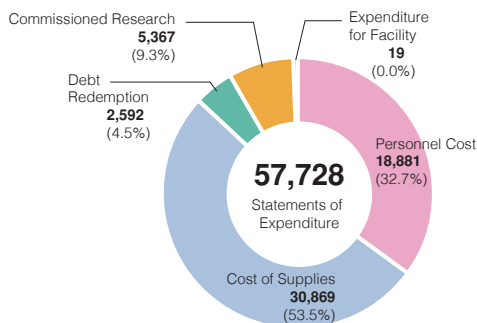
Grants for Management	13,600
Tuition and University Hospital	38,742
Commissioned Research	5,367
Subsidy for Facility	19
Total	57,728



■ Statements of Expenditure (FY2023) ■

Unit: million yen

Personnel Cost	18,881
Cost of Supplies	30,869
Debt Redemption	2,592
Commissioned Research	5,367
Expenditure for Facility	19
Total	57,728



■ Funds from Other Sources (FY2022) ■

Unit: thousand yen

Categories	Proposals Selected	Research Expense
Grants-in-Aid for Scientific Research	693	1,840,048
Grants&Endowment	1,542	1,879,132
Commissioned Research	364	2,279,129
Cooperative Research with Private Sector	447	799,539
Total	3,046	6,797,848

*Includes Special Coordination Fund to Promote Science and Technology

*Includes endowed courses

*Excludes Kumamoto University Endowment

*Excludes Grant-in-Aid for JSPS Research Fellows

■ Grants-in-Aid for Scientific Research (FY2022) ■

Unit: thousand yen

Categories	Proposals Selected	*Research Expense
Grant-in-Aid for Scientific Research on Innovative Areas (Research in a proposed research area)	10	121,985
Grant-in-Aid for Transformative Research Areas (A)	11	105,950
Grant-in-Aid for Transformative Research Areas (B)	2	22,490
Grant-in-Aid for Scientific Research (S)	2	73,190
Grant-in-Aid for Scientific Research (A)	9	84,110
Grant-in-Aid for Scientific Research (B)	106	547,140
Grant-in-Aid for Scientific Research (C)	334	420,266
Grant-in-Aid for Challenging Research (Pioneering)	2	12,740
Grant-in-Aid for Challenging Research (Exploratory)	33	88,392
Grant-in-Aid for Early-Career Scientists	141	217,066
Grant-in-Aid for Research Activity Start-up	21	30,290
Grant-in-Aid for Publication of Scientific Research Results	3	2,380
Fund for the Promotion of Joint International Research(Fostering Joint International Research(B))	12	54,730
Fund for the Promotion of Joint International Research(Home-Returning Researcher Development Research)	1	18,200
Grant-in-Aid for JSPS Fellows	40	37,883
Total	727	1,836,812

*Includes overhead costs

INTERNATIONAL HOUSE

Kumamoto University International House Residence A was constructed in 1985 to provide accommodation for international students and foreign researchers. To respond to the increase in the number of foreign students and researchers, Residence B was built in 1995, followed by Residences C, D and E in November 2009. The I-House office in Residence A is available to respond to questions from residents and to provide consultation and assistance.

Address: 7-763 Kurokami, Chuo-ku, Kumamoto City, Kumamoto 860-0862

Location: About 1.5 km east of the Kurokami Campus

Residence	Room Type				Total
	Family	Couple	Single	Shared (quad)	
A	3	3	49		55
B	4	3	50		57
C				36	36
D				36	36
E			48		48
Total number of rooms	7	6	147	72	232



Common Facilities

Lounge	2
Conference room	1
Japanese-style room	1
Public Lobby	1
Multipurpose room	1
Laundry room	10

STUDENT DORMITORY

Student dormitory is available to provide a living environment conducive to study for undergraduates attending the university from within Japan and overseas.

Location: About 1.5 km east of the Kurokami Campus

Maximum capacity

Men	200
Women	80
Total	280

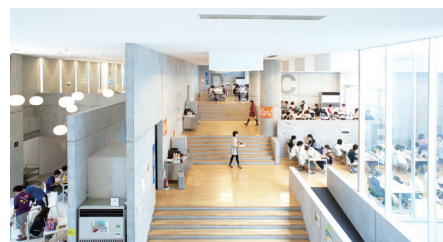


HEALTH CARE CENTER

The Health Care Center provides routine and special medical checkups, offers students guidance concerning their health, school life, studies and current path as well as responding in the event of an emergency.

CAFETERIAS AND SHOPS

Kurokami North	Student Hall	Cafeteria and Book Store (food, books, stationery, entertainment counter)
	Kusunoki Hall	Cafeteria/Reception Room/ Japanese-style Rooms/Lodging Rooms
Kurokami South	FORICO	Cafeteria and Convenience Store (food, books, stationery, entertainment counter)
Honjo	Student Union "Kaiju"	Cafeteria/Kiosk
Oe	Banjikan Hall	Cafeteria/Kiosk



SPORTS FACILITIES

Kurokami	Track and field stadium, rugby pitch, soccer field, tennis courts, swimming pool, gymnasium, athletic equipment storage
Toroku*	Baseball ground, tennis courts, archery range, Japanese archery range, gymnasium, driving practice field, training camp building, athletic equipment storage
Honjo	Tennis courts, gymnasium (including a martial arts hall)
Oe	Athletic field, tennis courts, gymnasium
Misumi	Yacht boathouse, training camp building
Hirogi	Rowboat boathouse

*Mainly used for extra-curricular activities



1756 Saishunkan established (Origin of School of Medicine and University Hospital)

1874 Kumamoto Teachers College established

1885 Kumamoto Pharmaceutical College established

1887 The Fifth High School established

1896 Kumamoto Medical College established

1897 Kumamoto Technical College established

There were five institutions of higher education in Kumamoto during the Meiji Era which eventually united to form Kumamoto University. Among these institutions was The Fifth High School, which was a center for higher learning in western Japan, and provided students with preparatory education to enter the Japanese Imperial Universities. A number of foreign teachers joined the school to offer western culture and knowledge to the students.

These young men, aged from their teens to late twenties, resided in a dormitory, and built a tradition of student community as well as lasting friendships.

1949 Kumamoto University established

Kumamoto University was established under the National School Establishment Law that reformed the preceding Japanese educational system. The new university incorporated the older institutions described above.

At its establishment, The Fifth High School comprised six departments, with an enrollment of approximately 1,100 students.

Discussion of the school's curriculum began soon after the founding of the school. After the Graduate School of Medicine was established in 1955, other graduate schools were subsequently established within the university.

The establishment of research and education institutions within the university was started early on. In the 1950s, both Kumamoto University Hospital and the University Library were completed. In addition, a number of research centers that conduct the highest level of scholarly research have been consecutively established over the past 20 years.

2004 Kumamoto University enters the 21st Century

The acceptance of government-sponsored international exchange students started around 1960, but records indicate that several international exchange students studied in the Faculty of Medicine as early as the 1950s. Since the 1960s, though, the number of international students has been steadily increasing. There were approximately 50 international students at the university in 1984, and that number increased to over 300 twenty years later in 2004.

Since Kumamoto University became a National University Corporation in 2004, the university has been ushering in an era of change. Nevertheless, the university will still continue to strive for further advancements in education, research, and medical care based on the knowledge and experience it has gained since it was first established, in order to contribute to society in the 21st century.



HISTORY OF THE UNIVERSITY HOSPITAL

The history of Kumamoto University Hospital goes back to the opening of the Hosokawa Clan Hospital in 1870. After being reorganized and relocated several times, the hospital was moved to its current location in 1901.

In 1949, after Kumamoto Medical College was absorbed into Kumamoto University, the name of the hospital was changed to Kumamoto University Hospital. It started with a system of eleven medical departments.

In the past several decades, in order to respond to the segmentation and advancement of medical services, the hospital established central consultation facilities as well as new medical departments with the aim of increasing efficiency, among other improvements.

Kumamoto University Hospital has grown to become a general hospital with technologically advanced medical facilities and a comprehensive medical system. It is still continuing to make advancements in its aim to become a university hospital that can continue to provide quality medical care in the 21st century.



HISTORICAL FIGURES



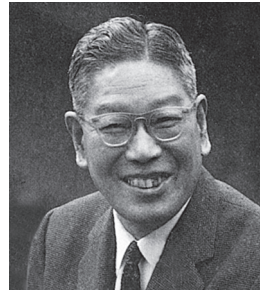
Lafcadio Hearn
(1850-1904)

Though he was of Irish extraction, he was born in Greece. He came to Japan in 1890. In 1891, he took up his new post at The Fifth High School. His work "Ghost Stories" ("*Kaidan*") introduces Japan's mysterious traditions in English, and is widely known.



Natsume, Soseki
(1867-1916)

In 1896, he came to Kumamoto to take up his new post as a lecturer at The Fifth High School. He was residing in Kumamoto during the time he went on the trip that appears in his famous novel "*Kusamakura*".



Ikeda, Hayato
(1899-1965)

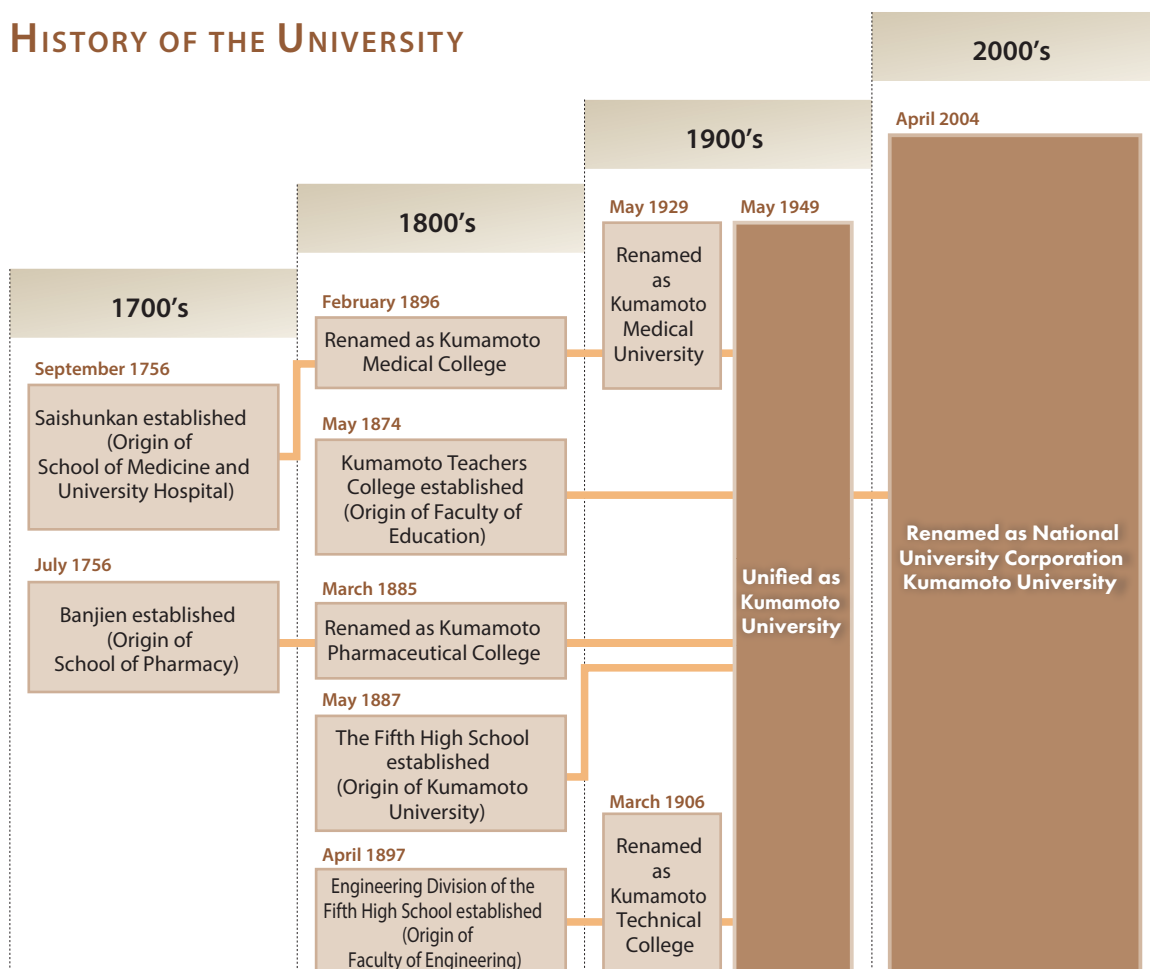
Hayato Ikeda was a politician who was born in Hiroshima prefecture and studied at The Fifth High School. He became the Prime Minister of Japan in 1960, and his administration led Japan for a prolonged time during its era of high economic growth.



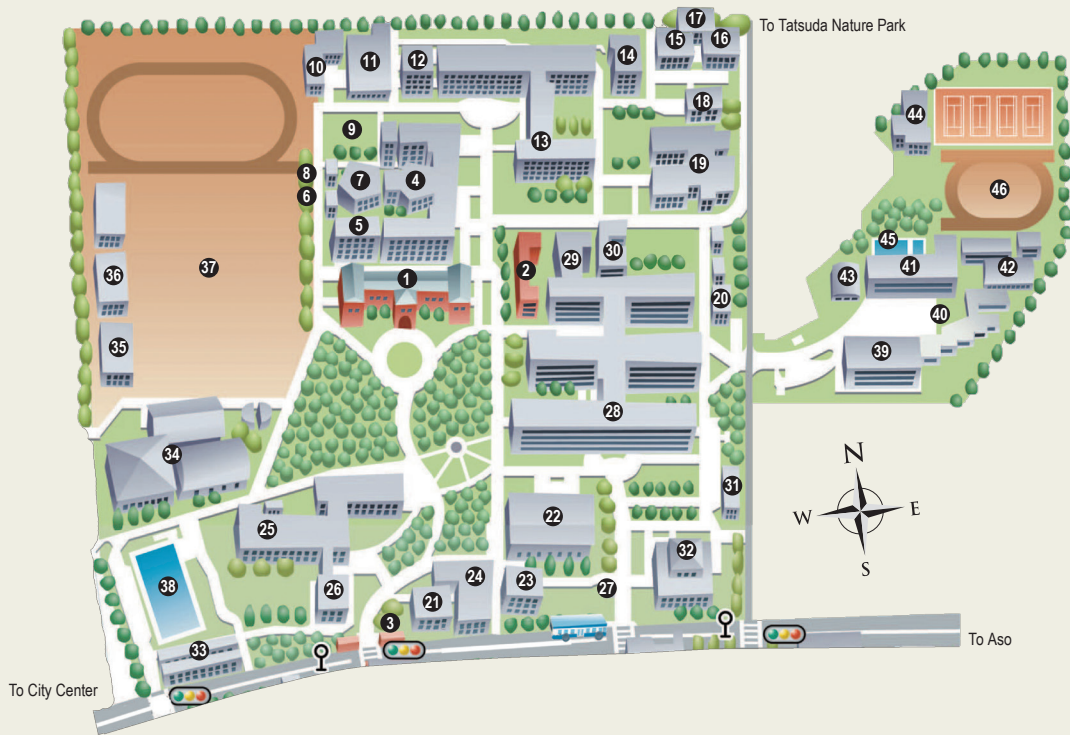
Sato, Eisaku
(1901-1975)

Eisaku Sato was a politician who was born in Yamaguchi prefecture and studied at The Fifth High School. He became the Prime Minister of Japan in 1964, and played a key role in the return of Okinawa to Japanese rule and the creation of Japan's "Three Non-Nuclear Principles." He received the Nobel Peace Prize in 1974.

HISTORY OF THE UNIVERSITY



KUROKAMI NORTH CAMPUS



Kurokami North Campus

- 1 The Memorial Museum of the Fifth High School ※
- 2 The Chemical Laboratory of the Fifth High School ※
- 3 The Front Gate (The Red Gate)※
- 4 Kurokami North N1 (Faculty of Letters/Law Main Bldg.)
- 5 Kurokami North N2 (Faculty of Letters/Law South Bldg.)
- 6 Kurokami North N3 (Graduate School of Social and Cultural Science Bldg. 1)
- 7 Kurokami North N4 (Faculty of Letters/Law Lecture Bldg.B)
- 8 Kurokami North N5 (Graduate School of Social and Cultural Science Bldg. 2)
- 9 Kurokami North N6 (Faculty of Letters/Law North Bldg.)
- 10 Kurokami North N7 (Faculty of Education Music Hall)
- 11 Kurokami North N8 (Faculty of Education Practical Training Laboratory)
- 12 Kurokami North N9 (Faculty of Education West Bldg.)
- 13 Kurokami North N10 (Faculty of Education Main Bldg.)
- 14 Kurokami North N11 (Faculty of Education East Bldg.)

- 15 University Archives
- 16 'Ai Work' A
- 17 'Ai Work' B
- 18 Chimeido Hall
- 19 Kusunoki Hall
- 20 Facility and Administration Building
- 21 Kurokami North C1 (Academic Commons Kurokami Bldg. 5)
- 22 University Library (Central Building)
- 23 University Library (South Building)/ The Open University of Japan Kumamoto Study Center
- 24 Health Care Center
- 25 North Student Hall Bldg. A (Cafeteria, Bookstore and Shops)
- 26 North Student Hall Bldg. B
- 27 Guard Station
- 28 Kurokami North E1 (General Education Building)
- 29 Kurokami North E2 (Academic Commons Kurokami Bldg. 6)
- 30 Kurokami North E3 · E4 (Academic Commons Kurokami Bldg. 6)

- 31 Environmental Safety Center
- 32 Center for International Education
- 33 Club Rooms 1
- 34 Kurokami Gymnasium
- 35 Club Rooms 2
- 36 Club Rooms 3
- 37 Athletic Field (Bufugen)
- 38 Swimming Pool
- 39 Kurokami North E8 (Faculty of Education East classrooms)

Special Support School Attached to the Faculty of Education

- 40 Kurokami North E9 (Special Support School Bldg. A)
- 41 Kurokami North E10 (Special Support School Bldg. B)
- 42 Kurokami North E11 (Special Support School Bldg. C)
- 43 Kurokami North E12 (Special Support School Gymnasium)
- 44 Kurokami North E13 ('Suzukake-no-ie' ADL Training House)
- 45 Swimming Pool
- 46 Athletic Field

Kurokami Campus (311, 170m²)



(taken in 2022)

KUROKAMI SOUTH CAMPUS



Kurokami South Campus

- 47 Museum of the Engineering Faculty ※
- 48 Kurokami South W1 (Faculty of Engineering Research Bldg. III)
- 49 Kurokami South W2 (Faculty of Engineering Core Laboratory Bldg.)
- 50 Kurokami South W3 (Academic Commons Kurokami Bldg. 1)
- 51 Kurokami South W4 (Faculty of Engineering Research Bldg. II)
- 52 Kurokami South W5 (Faculty of Engineering Research Bldg. IV)
- 53 Kurokami South W6 (MachineTool Center)
- 54 Intentionally left blank
- 55 Intentionally left blank
- 56 100th Anniversary Hall
- 57 Kurokami South C1 (Academic Commons Kurokami Bldg. 7)
- 58 Kurokami South C2 (Faculty of Engineering Bldg. I)
- 59 Kurokami South C3 (Faculty of Engineering Research Bldg. 1)
- 60 Kurokami South C4 (Academic Commons Kurokami Bldg. 2)
- 61 Kurokami South C5 (Innovation Plaza)
- 62 Kurokami South C6 (Acoustic Laboratory)
- 63 Kurokami South C7 (Academic Commons Kurokami Bldg. 3)
- 64 Kurokami South C8 (Faculty of Engineering Bldg. 2)
- 65 Kurokami South C9 (Center for Management of Information Technologies)
- 66 University Archives
- 67 University Hall (Administrative Offices) ■
- 68 Guard Station
- 69 Kurokami South E1 (Faculty of Science Bldg. 1&2)
- 70 Kurokami South E2 (Faculty of Science / Graduate School of Science and Technology Core Research Laboratory Bldg.)
- 71 Kurokami South E3 (Faculty of Science Bldg. 3)
- 72 Kurokami South E4 (Faculty of Science Bldg. 4)
- 73 Kurokami South E5 (Research Building for Science and Technology)
- 74 Kurokami South E6 (Experimental Building for Science and Technology)
- 75 Kurokami South E7 (Acoustic Analysis Laboratory for Underwater Environments)
- 76 Kurokami South E8 (Low Temperature and He Gas Recovery Station)
- 77 South Student Hall
- 78 FORICO (Cafeteria and Convenience Store)
- 79 Kurokami South S1 (Hydraulic Laboratory)
- 80 Kurokami South S2 (Instrumental Analysis Center for Engineering Research)
- 81 Kurokami South S3 (Disaster Prevention Laboratory)
- 82 Kurokami South S4 (Kurokami Radioisotope Laboratory)
- 83 Kurokami South S5 (Research Center for Buried Cultural Properties)
- 84 Kurokami South S6 (Venture Laboratory) (Shock Wave and Condensed Matter Research Building)
- 85 Kurokami South S7 (Incubation Laboratory)
- 86 Kurokami South S8 (Shock Wave Laboratory)
- 87 Kurokami South S9 (Engineering Experimental Laboratories)
- 88 Kurokami South S10 (MRC Casting Laboratory) (Magnesium Research Center(MRC))
- 89 Kurokami South S11 (MRC Forming and Machining Laboratory)
- 90 Kurokami South S12 (International Research Center for Advanced Science and Technology)

HONJO NORTH, CENTRAL, SOUTH CAMPUS



Honjo North Campus

- 1 West Tower
- 2 East Tower
- 3 Central Examination Building
- 4 Outpatient Building
- 5 Administration Building
- 6 Yamasaki Hall ■
- 7 Welfare Facilities
- 8 Facilities Management Building
- 9 Honjo North1 (Clinical Medicine Research Building)
- 10 Honjo North2 (Medical Education & Library Building)
- 11 Honjo North3 (General Medical Research Building)
- 12 Honjo North4 (Basic Research Building)
- 13 Honjo North5 (The Center for Medical Education and Research)
- 14 Multistory Parking Garage 1
- 15 Multistory Parking Garage 2
- 16 Multi Triage Building

Honjo Central Campus

- 17 Honjo Central1 (Institute of Resource Development and Analysis (Center for Animal Resources and Development))
- 18 Honjo Central2 (Joint Research Center for Human Retrovirus Infection, Center for Animal Resources and Development)
- 19 Honjo Central3 (International Research Center for Medical Sciences (IRCMS))
- 20 Honjo Central4 (Lecture Building)
- 21 Honjo Central5 (Institute of Molecular Embryology and Genetics)
- 22 Honjo Central6 (Institute of Resource Development and Analysis (Gene Technology Center / Radioisotope Center))
- 23 Honjo Central7 (Academic Commons Honjo-1)
- 24 Club Room 1
- 25 Club Room 2
- 26 Club Room 3
- 27 Higo Iku Monument Hall
- 28 Sekijyu Memorial Storage

Honjo South Campus

- 29 Student Union "Kaiju"
- 30 Gymnasium
- 31 Honjo South1 (School of Health Sciences Bldg. A, B, C)
- 32 Honjo South2 (Academic Commons Honjo-2)
- 33 Honjo South3 (School of Health Sciences Bldg. E)
- 34 Club Room
- 35 Kobato Nursery



Oe Campus

Oe Campus

- 1 Oe C1 (School of Pharmacy Main Bldg.)
- 2 Oe C2 (Research Laboratory Bldg.)
- 3 Oe C3 (Faculty of Life Sciences Research Laboratory Bldg.)

- 4 Oe C4 (Lecture Building)
- 5 Oe C5 (Center for Clinical Pharmaceutical Sciences)
- 6 Oe W1 (Animal House)
- 7 Oe W2 (Joint Research Building)
- 8 Oe W3 (Radioisotope Center)
- 9 Oe E1 (General Research Building)
- 10 Oe E2 (Instrumental Analysis Center)
- 11 Oe E3 (Medical Plant Garden Laboratory)
- 12 Compost Depot
- 13 Banjikan Hall (Restaurant, Seminar Room, Liaison Office)
- 14 Oe Gymnasium
- 15 The Kumayaku Museum and Miyamoto Memorial Hall
- 16 School of Pharmacy Resource Center
- 17 Oe E4 (Industrial Innovation Laboratory)
- 18 Staff Residence
- 19 Athletic Field
- 20 Medicinal Plant Garden

Honjo North, Central, South Campus (135,815m²)



(taken in 2022)

Oe Campus (53,352m²)



(taken in 2022)

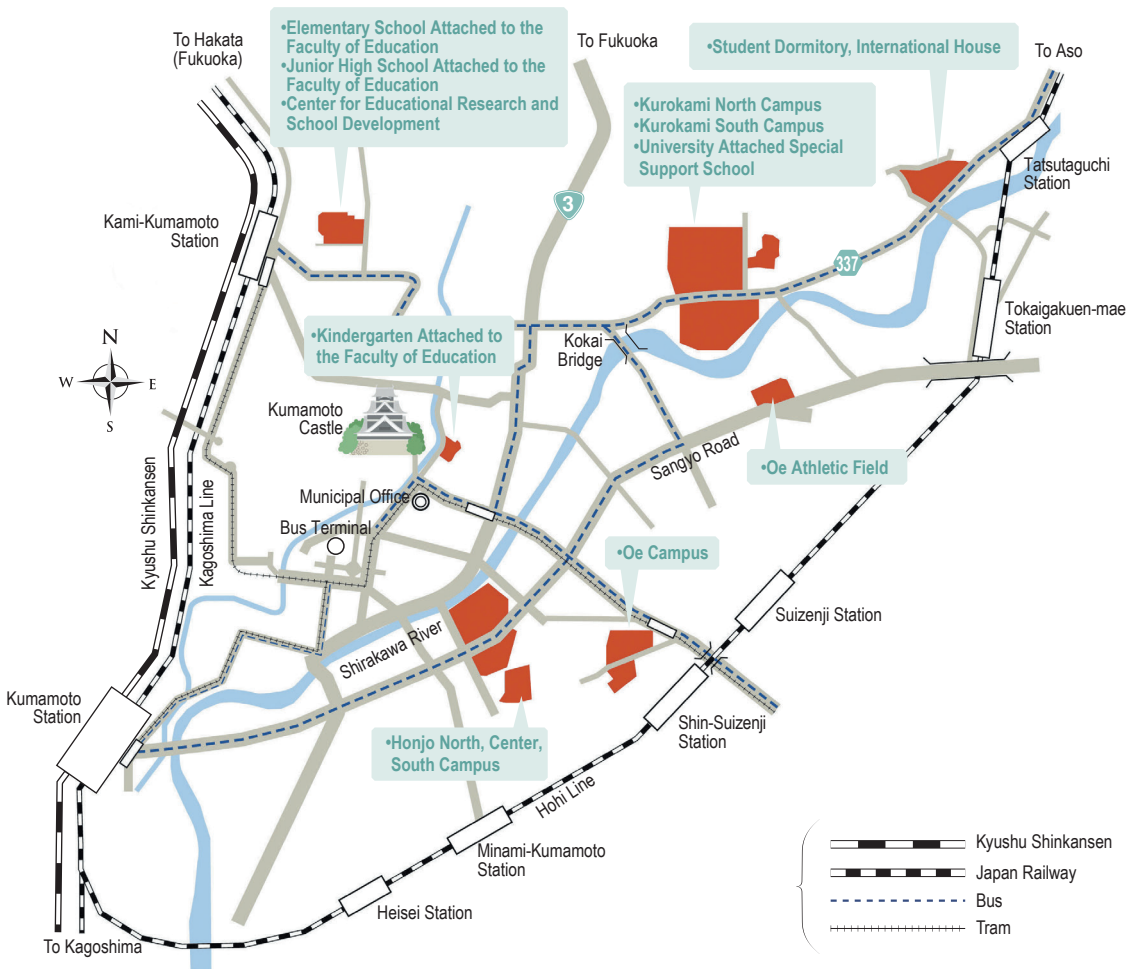
LOCATION



KYUSHU Island



KUMAMOTO City





The Kumamoto Area

Kumamoto University is located in the city of Kumamoto in Kyushu, the southern-most main island of Japan. Kumamoto City is the third biggest city in Kyushu. It has a population of approximately 740,000, which is equivalent to about 41% of the total population of the prefecture. By air it takes 90 minutes from Tokyo and 60 minutes from Osaka; by Kyushu Shinkansen it takes 40 minutes from Fukuoka City.

The weather is generally mild, though there is a rainy season from early June to mid-July, followed by a subtropically hot summer season. Autumn and spring offer the most comfortable weather. Warm clothing is necessary in January and February. It seldom snows even in midwinter, and never more than a few centimeters.

Known for its abundance of trees and greenery, Kumamoto is one of Japan's oldest cities. While offering the latest in modern facilities, Kumamoto has managed to retain a purity and simplicity of old Japanese customs, flavor, and spirit which make it an interesting place to visit and a delightful place to live.

Local attractions include Kumamoto Castle, one of the oldest and grandest medieval castle in Japan; Kumamoto downtown area, located 10-15 minutes away from Kumamoto University by bicycle and known for a lot of office building and shopping streets; the Amakusa Islands, a chain of 120 islands known for their exciting Christian history and plenty of rich nature; and Aso National Park, crowned by the active volcano Mt. Aso, with the largest caldera volcano in the world. Because of its proximity to Mt. Aso, the Kumamoto area also has an

abundance of natural hot springs. Kumamoto is also well-known in Japan for its delicious drinking water. Because the rainfall that soaks into the ground in the mountains of the Aso region takes many years to come out, one can always be able to drink delicious water.



Kumamoto University

2-39-1 Kurokami, Chuo-ku, Kumamoto

860-8555 JAPAN

<https://ewww.kumamoto-u.ac.jp/en/>

