



Kumamoto University Initiative 2030

We are a hub for education and research that contributes both locally and globally through “co-creation” with society.

Vision

toward 2030



As a major university in Kyushu, Japan, we are transcending national, regional, and disciplinary boundaries to achieve SDGs



Strengthen Cooperation



Other Institutions

Kumamoto University
Departments & Fields

Co-creation with Stakeholders

Kumamoto University & Partnerships with other Businesses



Dialogue with Stakeholders

University reform promoting diversity and a “One Team” mindset



Diversity



“One Team” university reform

Becoming a hub for research and education that contributes both locally and globally through “co-creation” with society.

Vision

While the social climate is undergoing a remarkable transformation due to the spread of COVID-19, digital innovation (DX) is rapidly advancing on a global scale and the era of the “New Normal” has arrived. Humanity has many complex and difficult challenges to face, including DX-induced social change; the carbon neutrality; regional food, resource, and hegemony issues; and energy, environmental, and climate change problems. Japan in particular has a declining birth rate and its population of 18-year-olds expected to fall below one million by 2032.

In this rapidly changing environment, Kumamoto University (KU) will do its utmost to achieve the 2030 United Nations Sustainable Development Goals (SDGs) by leveraging its experience overcoming major disasters. The university pledges to empower future generations with the capability to face and solve issues on both local and world-wide scales, to promote advanced research, and to solve the various problems facing humanity by cooperation with society.

For Japanese institutions, the Fourth Mid-term Goal period is a time when national universities will have their true value to society tested. As such, Kumamoto University will reform its

existing university management, education and research productivity to be more in line with the current times and needs of society. The university will further promote diversity by actively recruiting young people and accelerating efforts to achieve the SDGs. Kumamoto University’s three basic ideals for university management, education and research are “Always Communicating,” “Always Visible,” and “Always Improving.” It will contribute both locally and globally by opening itself to the world and collaborating with all types of stakeholders to stimulate activity in education, research, and co-creation with society.

In education, language training for Japanese and international students will be an essential foundation. With an understanding of various cultures and world history, graduates will be able to comfortably work in a widely diverse international community. The university will cultivate truly global citizens able to acquire the competencies required for the DX era and play active roles in a wide range of fields both in Japan and abroad.

In research, KU will develop internationally advanced research organizations in life, natural, and humanity and social sciences into one-of-a-kind research centers in Japan, and create an

environment that attracts many outstanding researchers from around the world to produce world-class research. The “Open Innovation Center” will be established to strengthen ties with industry and improve education and research for co-creation with society, particularly with relation to semiconductors—the very base of digital society. In addition, KU will strengthen inter-university and industry - academia - government collaborations within the most appropriate framework for each department and field. Through dialogue with various stakeholders, the university will seek to promote social change and solve social issues in the region thereby driving revitalization and local development.

In terms of medical care, the university hospital will promote the training of highly advanced medical personnel, including disaster medical personnel, and ultimately create a smart hospital that utilizes DX.

With an eye toward the difficult-to-predict year of 2030, Kumamoto University aims to be a research-based university, open to the region and the world, that contributes to society through co-creation by implementing initiatives based on these three (education, research, medicine) strategies.



Always **communicating**
Always **transparent**
Always **improving**

- 2016 Kumamoto Earthquake
- 2020 Flooding
- Coronavirus

- Leveraging its location at the center of Kyushu, Kumamoto University is producing top-level education, research, and social contribution activities.
- Empowering Japan's younger generations to become globally active in the era of digital transformation (DX).

Vision Realization Strategies



Education

We foster people who can contribute to achieving SDGs through their literacy of international society in the age of DX, advanced communication skills and cross-cultural understanding. Our doctoral graduates can also flexibly respond to societal demands through innovation.



Research

We are developing the International Advanced Research Organization into a one-of-a-kind research center, developing and refining world-class research, and strengthening our research support system. We are also fostering the discovery of new research fields with high potential.



Co-creation with Society

Our university is open to the community and the world, and we promote regional development and revitalization through open innovation by collaborating with various stakeholders in the community, society, and the world, including other educational and research institutions. As a center for clinical education, Kumamoto University Hospital promotes the training of highly advanced medical personnel, including disaster medical personnel, and contributes to regional medical care by supporting the Kumamoto Medical Network in cooperation with Kumamoto Prefecture and the Medical Association. We aim for the development of a smart hospital using DX.

Governance

- Thorough dialogue with stakeholders
- Cultivation of next generation of corporate management personnel
- Top backing by the president and joint research with industry
- Strengthen the financial base with an indirect cost ratio of 30% or more.
- Realization of a digital campus

Promote Diversity
Actively Recruit Young
Talent

(Basic Personnel Policy, July 2021)

Accelerate efforts to
achieve SDGs

(Kumamoto University SDGs
Pledge, August 2021)

Clarify the values shared by the entire university and establish a system to support university reform as "One Team."



Develop Younger Generations for a Global Society

Increase the number of joint and double degree programs with partners. To advance that goal, we will provide Japanese and international students with language education as well as backgrounds in politics, culture, and history. This will help produce people with both the desire and ability to engage with global society.

Produce DX-literate Human Resources

Cultivate world-class students with the literacy required to be successful in an era of international digital transformation (DX). Our students will have the ability to create solutions to a multitude of problems in a diverse international society and the ability to take action to lead the implementation of such solutions.



Develop Innovators

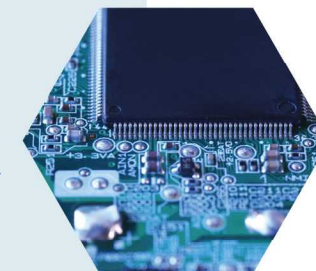
Continuously supply high-level innovators to benefit society, including the local industries in Kumamoto and Kyushu. Excellent master's and doctoral course graduates will have the ability to diversify their career paths to match their needs as well as those of their communities.

Thoroughly identify the needs of society and promote the development of curriculum that meets the needs of the times.



Establish a Research and Education Org. for Semiconductor and Digital fields

Basic knowledge in mathematics, data science, and AI will be essential for both humanities and science majors. Thus the university will establish the "Research and Education Organization for Semiconductor and Digital Fields" (tentative name), a core organization for education and research in semiconductor-related fields. This organization will develop new knowledge and support the foundations of digital society.



Collaboration between industry, academia, government, finance

Education that integrates the arts and sciences

Establish a regional collaboration platform

Develop new degree programs through cooperative undergraduate agreements

Producing DX & Global Citizen Innovators

Strategy 02 Research

Kumamoto University Initiative 2030

World-class Research Hub Development

International Research Center for Medical Sciences (IRCMS)

International Research Organization for Advanced Science & Technology (IROAST)

- Stem Cell Research, Cancer Biology
 - Advanced Materials Science, Biological and Environmental Sciences, Disaster Prevention and Management
- Enhancing interdisciplinary research through cooperation between medicine, science and engineering, and exploring new research frontiers.

Life Sciences

Joint use/collaborative research centers as leading research hubs in Japan

Institute of Molecular Embryology and Genetics (IMEG)
Promoting developmental biology and stem cell research

Aging & Healthy Aging Research
Accelerating the development of new treatments through data-driven analytical research

Basic and Applied Research of Infectious Diseases

Faculty of Life Sciences
(Medicine, Pharmacy, Health Science)

Natural Sciences

Institute of Light Metals
Leading light metal materials research in Japan

*in cooperation with the University of Toyama

Addressing the Challenges of Carbon Neutrality & becoming a One-of-a-kind Research Hub in Japan

Advanced Research

Core Research

Exploratory Research

Faculty of Advanced Science and Technology
(Science, Engineering)

Advanced Research

Core Research

Exploratory Research

Faculty of Humanities and Social Sciences
(Letters, Law)

Humanities & Social Sciences

© Eisei-Bunko Research

International Research Center for Humanities and Social Sciences

- Historical Document and Artifact Analysis
- Research Resource Archives
- © Media / Contemporary Art & Culture Research

Strategic Use of President's Discretionary Posts / Funds

Recruitment of Distinguished Researchers from Japan and Abroad



Kumamoto Innovative Development Organization (KIDO)

Stimulate research in the field of semiconductors - the foundation of a global society in the DX era - to strengthen local industries.

Establish the Open Innovation Center

Facilitate joint research across departments and institutions, and strengthen ties with industry.

Strongly support “innovation commons” for scientific cooperation



Regional Innovation Ecosystem Program Development

Conduct co-creative research and accelerate the formation of an ecosystem that continuously develops new industries



Education on solving social issues through business

Support ways to solve social issues, revitalize the local economy, and develop local leaders

Center for Waste Cycle, Marine Environment, and Disaster Management

KIDO

Learning from the 2016 Kumamoto earthquake and multiple torrential rain disasters

For disaster mitigation, develop a smart city adapted to a multi-hazard environment by collaborating with industry, academia, and government for “the realization of a society that can quickly recover and rebuild from disasters.”

Creating a safe and secure environment around the abundant groundwater resources of Kumamoto Prefecture.



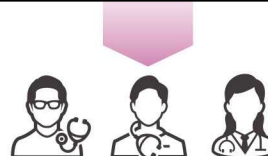
Kumamoto University Hospital



- Develop and provide highly advanced medical care as a **stronghold of community medicine**
- Improve medical care quality and develop highly advanced medical personnel
- Train multidisciplinary disaster medical personnel** who constitute a long term patient care strategy.

Enhance the “Kumamoto Medical Network” Realize a “Smart Hospital” utilizing DX

Cooperation with Kumamoto Prefecture, medical association, and government organizations



Dispatch physicians to regional hub hospitals

