

The logo consists of a stylized chevron shape pointing to the left, composed of two overlapping triangles. The upper triangle is dark blue and the lower triangle is yellow.

**Kumamoto University**

**2021-2022**

# Table of Contents

---

<b>1 Introduction</b>	<b>0</b> Table of Contents <b>1</b> Message from the President <b>2</b> Vision, Goals <b>3</b> Organization
-----------------------	--

---

<b>2 Faculties and Schools</b>	<b>4</b> Faculty of Letters <b>5</b> Faculty of Law <b>6</b> Graduate School of Social and Cultural Sciences <b>7</b> Faculty of Humanities and Social Sciences <b>8-9</b> Faculty of Education / Graduate School of Education (Professional Graduate School) <b>10</b> Faculty of Science <b>11</b> Faculty of Engineering <b>12-13</b> Faculty of Advanced Science and Technology / Graduate School of Science and Technology <b>14-15</b> School of Medicine / Graduate School of Medical Sciences / Graduate School of Health Sciences <b>16</b> School of Pharmacy / Graduate School of Pharmaceutical Sciences <b>17-18</b> Faculty of Life Sciences <b>19</b> Undergraduate and Graduate Courses
--------------------------------	--

---

<b>3 Centers and Institutes</b>	<b>20</b> Institute of Molecular Embryology and Genetics / Institute of Industrial Nanomaterials / Priority Organization for Innovation and Excellence / Organization for Globalization <b>21</b> Headquarters for Admissions and Education / Institute of Light Metals (ILM) International Research Center for Medical Sciences (IRCMS) <b>22</b> International Research Organization for Advanced Science and Technology (IROAST) / Center for Management of Information Technologies / Kumamoto Innovative Development Organization / Research Center for Instructional Systems <b>23</b> Eisei-Bunko Research Center / Center for Water Cycle, Marine Environment, and Disaster Management / The Memorial Museum of the Fifth High School <b>24</b> Magnesium Research Center / Institute of Resource Development and Analysis / Joint Research Center for Human Retrovirus Infection / University Archives / Environmental Safety Center <b>25</b> Research Center for Buried Cultural Properties / Health Care Center / Student Accessibility Support Room / Institutional Research Office / Campus Design Office <b>26</b> University Hospital <b>27</b> University Library / Technical Division <b>28-29</b> Local and Overseas Offices <b>30</b> Kumamoto University Historical Architecture
---------------------------------	--

---

<b>4 Academic and Research Projects</b>	<b>31</b> Program for Promoting the Enhancement of Research Universities <b>32-33</b> Top Global University Project <b>34-36</b> Initiatives to Develop Prominent Research
---	--

---

<b>5 International Exchanges</b>	<b>37-41</b> International Exchange Agreements <b>42</b> Researchers and Scholars Exchanges <b>43</b> International Students <b>44</b> Japanese Students Abroad / Overseas Foreign Language Training Program <b>45</b> International Programs / Japanese Language Classes <b>46</b> Kumamoto University Summer Program / Double Degree Programs <b>47</b> International Projects and Activities
----------------------------------	---

---

<b>6 Facts</b>	<b>48</b> Administrative Officers <b>49</b> Number of University Personnel <b>50</b> Student Enrollment / Student Financial Aid <b>51</b> Student Admission / Student Tuitions and Fees <b>52</b> Degrees Awarded / After Graduation <b>53</b> Budget Breakdown <b>54</b> Welfare facility
----------------	--

---

<b>7 History</b>	<b>55-56</b> History
------------------	----------------------

---

<b>8 Access</b>	<b>57-59</b> Campus Maps <b>60</b> Location
-----------------	--

---

	<b>61</b> The Kumamoto Area
--	-----------------------------



## Message from the President

OGAWA Hisao  
President of Kumamoto University

**W**elcome to Kumamoto University! Kumamoto Prefecture is located in the center of Kyushu Island in the south of Japan. Kumamoto offers abundant natural beauty, from Aso volcano—one of the world's largest calderas—in the east to the picturesque Amakusa coastline where you can find several small islands connected by the Five Bridges of Amakusa in the west. Kumamoto University was founded in 1949 as a national university, but its roots go all the way back to the 18th century.

Our vision is to contribute to national and international communities through the creation, development and management of knowledge, and the cultivation of students with excellent intellectual, moral, and practical abilities. Guided by this vision, we equip our students to be competent and capable of addressing the various challenges they will face in the future.

Although the COVID-19 pandemic has drastically changed our day-to-day lives, and has disrupted the economic and social systems of most countries, it has significantly broadened distance-learning opportunities. We plan to enhance our globalized educational systems by promoting double and joint degree programs, and creating new online learning in collaboration with international partner institutions. We will emphasize digital analytics, mathematical data science, and international communications. All students will receive training in these areas so they can become capable of creating new value for the digital transformation era.

As a regional hub for research and education, Kumamoto University has established international collaborative research institutions for the life sciences, the natural sciences, and the humanities and social sciences to globalize and strengthen our research activities. We strive to conduct advanced research in pursuit of academic excellence and contribute to a better world. As we explore and develop potential research opportunities, we are always pushing to improve our status as a research hub, all the while contributing to the local community through various collaborative activities.

Kumamoto University has four nationally registered Important Cultural Properties in addition to our rich heritage of arts, handicrafts, and historical documents. Under the new University Museum Initiative, these heritage sites will soon be exhibited to all visitors so that they can gain a deeper understanding of our local history, culture, and traditions.

Within these pages, you will find information related to the management, education, and research at Kumamoto University. We believe that it is imperative to the success of our students and the university for leaders to provide a culture of transparency, listen to external opinions and suggestions, and remain motivated to grow.

I hope this brochure helps you to understand more about Kumamoto University and our activities.

*Hisao Ogawa*

# 創造の森 挑戦の炎



“Forest of Creative Power, Blaze of Challenging Spirit”

Kumamoto University (KU), a globally active research university with roots in local communities, has adopted a motto that symbolizes the university's unique attributes and expresses its essential quality: “KU Spirit.”

## VISION

Kumamoto University aims to contribute to the community and global society by cultivating intelligent, moral, and skillful people, while working for the creation, inheritance, and development of knowledge, following the spirit of the Fundamental Law of Education and the School Education Law.

## GOALS

### Education

In order to cultivate unique, creative people, the university provides a comprehensive education based on a consistent philosophy followed by all of our undergraduate departments and graduate schools.

Our undergraduate departments, with the help of a broad education, inculcate in students the abilities of international communication, adapting to the information age, and thinking and acting independently.

Our graduate schools cultivate highly specialized workers with comprehensive reasoning ability, technical knowledge, and internationally recognized skills, in addition to deep insight into humankind and nature, on the basis of the undergraduate education that our student receive.

As an institution that is open to the public, the university offers a place where people can engage in lifelong learning.

### Research

The university strives to protect and develop humankind's cultural heritage, while enhancing its capabilities to function as a center of advanced academic research and proactively promote cutting-edge, creative academic research.

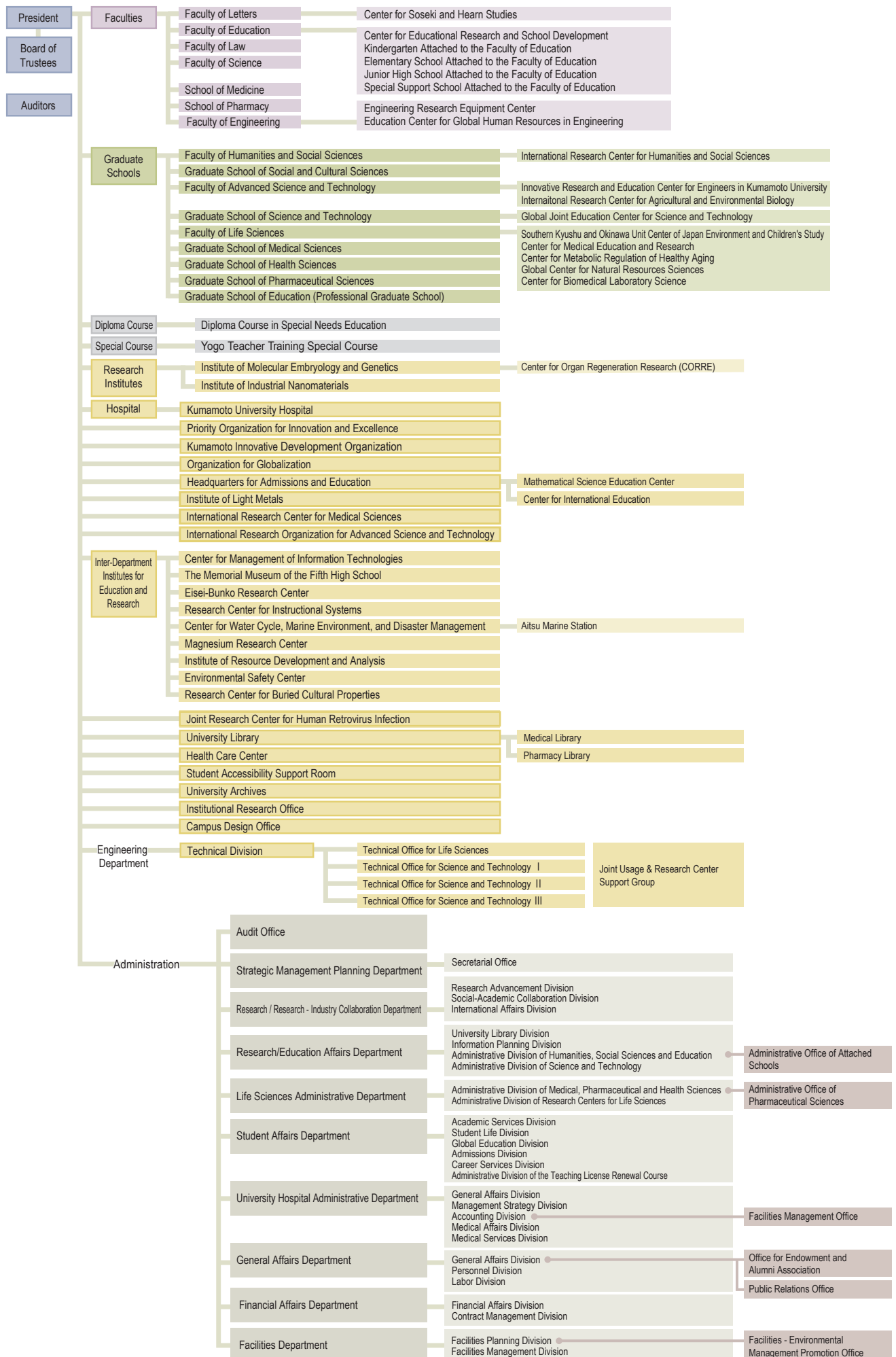
In addition, by making use of its unique features, comprehensively deepening knowledge in the fields of human science, social science, and natural science, as well as promoting interdisciplinary research, Kumamoto University is working to contribute to the harmonious coexistence of humans and the environment, as well as sustainable societal development.

### Contributions to local and global communities

As a university located in a regional hub city, the university will strengthen its cooperation with the local community and serve the functions of being a central research facility and cultivating leaders in the local community. By striving to convey our academic culture to the world, the university will contribute to the promotion of local industry and to advancing the provision of information about the culture.

In addition, the university strives to promote international intellectual exchange, educate international students, and train graduate students capable of producing a bilateral international exchange.

# ORGANIZATION





## Faculty of Letters

- **Department of Integrated Human Studies**  
Human Sciences, Socio-human Studies, Regional Science
- **Department of History**  
Japanese History and Archaeology, the Modern World System
- **Department of Literature**  
East-Asian Languages and Literature, Euro-American Languages and Literature, Transregional Studies of Language and Literature
- **Department of Communication and Information Studies**  
Communication and Information Studies, Contemporary Cultural Resource Studies

### Faculty of Letters

The Faculty of Letters was established in May 1949 as part of the new Faculty of Law and Letters. This faculty was then split into the Faculty of Law and the Faculty of Letters in 1979. The education and research framework of the Faculty of Letters consists of four educational departments, which are the Department of Integrated Human Studies, the Department of History, the Department of Literature, and the Department of Communications and Information Studies. The Faculty welcomes 170 new students each year. Approximately 70 faculty members are conducting academic research in a broad number of areas, including the humanities, social studies, and cultural studies.

To satisfy new and contemporary needs, three interdisciplinary courses that made use of an existent educational system for cross-disciplinary learning were established in 1997. In 2005, these courses were disbanded and the Department of Communication and Information Studies was established. The aim of its establishment is to help students acquire outstanding abilities in international communication using English, as well as to teach them to excel at processing information. There are numerous international students across the Faculty, which is striving to develop people who can contribute to the international community through various researches.

The Faculty's research activities include aspects of the history and social problems specifically related to Kumamoto prefecture. The Eisei-Bunko Research Center, an interdepart-

ment institute of Kumamoto University since 2017, was originally established as an affiliate institute of the Faculty of Letters in 2009. The purpose of the Center is to enable analysis of the scholarly values of historical materials in the Hosokawa clan's centuries-old collection, and to promote academic advances of its research. Currently, on-going projects by the Faculty such as archival studies of Minamata disease based on the aggregation of field research data, and literary studies of Meiji era writers who taught in Kumamoto are expected to be recognized as prioritized by the University.

#### ■ Institution ■

##### Center for Soseki and Hearn Studies

The Faculty of Letters Center for Soseki and Hearn Studies (established December 2017) aims to create an organization dedicated to the comprehensive research of Natsume Soseki and Lafcadio Hearn, focusing mainly on Kumamoto University's own collection, coordinating with cultural administrative organizations to promote cultural advancement in the region, and using these activities to train professional researchers who will contribute to research in the humanities and social studies as well as cultural promotion.

URL: <http://www.let.kumamoto-u.ac.jp/en/>



Faculty of Law

- **Department**  
Department of Law
- **Courses**  
Law•Public Policy, Advanced•Leader

**Faculty of Law**

The Faculty of Law at Kumamoto University has been delivering high quality legal education for almost 70 years. Established in 1949, now with over 840 undergraduate students and around 50 full-time staff, we have evolved into one of the leading departments of law in Japan. We provide a stimulating and supportive environment for undergraduate

study. Students are taught in a mixture of large lectures and small seminar groups where they develop their analytical and critical skills. They may take a course of lectures on Public Law, Private Law and International Law. Alongside the law courses, students enrolled in this Faculty can also learn Economics, Political Science and Conflict Resolution.

**URL:** <http://www.law.kumamoto-u.ac.jp/en/>



## Graduate School of Social and Cultural Sciences

### ■ Master's Program is composed of:

Division of Law, Policy and Conflict Resolution Studies  
 Joint Degree Program in Conflict Resolution of Kumamoto University and University of Massachusetts Boston  
 Division of Modern Social Human Studies  
 Division of Cultural Science Studies  
 Division of Instructional System Studies

### ■ Doctoral Program is composed of:

Division of Human and Social Science Studies  
 Division of Cultural Science Studies  
 Division of Instructional System Studies

### Graduate School of Social and Cultural Sciences

The former Graduate School of Social and Cultural Sciences was established in April 2002, which offered a three-year independent, interdisciplinary and comprehensive Doctoral Program based on a wide range of fields given in the Faculty of Letters and the Faculty of Law. The Division of Instructional System Studies (Master's Program), which was designed to foster e-learning professionals, was founded in April 2006. In April 2008 was established the present Graduate School of Social and Cultural Sciences (GSSCS) which consists of Master's Program and Doctoral Program, by reorganizing the former Graduate School of Social and Cultural Sciences (Doctoral Program), Graduate School of Letters (Master's Program), Graduate School of Law (Master's Program), and Division of Instructional System Studies.

The Master's Program of the GSSCS is composed of five divisions: Law, Policy and Conflict Resolution Studies; Modern Social Human Studies; Joint Degree Program in Conflict Resolution between Kumamoto University and University of Massachusetts Boston(JDP). The first three divisions offer three, four and six courses respectively: Law, Policy and Conflict Resolution Research Course, Law and Public Policy Practice Course, Conflict Resolution Practice Course; East-

Asian Business Communication Specialist Course, Advanced Ethics Research Course, Field-Research Research Course, Cognitive Philosophy and Psychology Research Course; Cultural-Administration and Curator Specialist Course, High School Japanese-language Teaching Specialist Course, English-language Education Specialist Course, History Research Course, Japanese and East-Asian Culture Research Course, Euro-American Culture Research Course. And the JDP was established in April 2021.

The Doctoral Program aims to foster highly specialized professionals and researchers. It comprises three divisions: Human and Social Science Studies, Cultural Science Studies, Instructional System Studies. The first two divisions offer six and four fields respectively: Public Policy Studies, Legal Studies, Conflict Resolution Studies, Advanced Ethics Studies, Field-Research Studies, Cognitive Philosophy and Psychology Studies; English-language Pedagogy Studies, History Studies, Japanese and East-Asian Culture Studies, Euro-American Culture Studies. The Master's and the Doctoral Programs are open to working people and overseas students, as well as those who go on to it from the Master's Program.

URL:<http://ewww.kumamoto-u.ac.jp/dept/social/>



Following the establishment of the Faculty of Life Sciences and the Faculty of Advanced Science and Technology, which arose from the process of a stricter selection focusing on research fields in the graduate school, the Faculty of Humanities and Social Sciences was established on April 1, 2017 by reorganizing the Faculty of Letters, the Faculty of Law, the Graduate School of Social and Cultural Sciences, and the School of Law.

The establishment of the Faculty of Humanities and Social Sciences means that university teaching staff are effectively allocated among the three fields of life sciences, natural sciences and human/social sciences. This realignment makes it possible to work through the rapid population decline among youth and to meet the growing needs of globalization. It also makes it possible to readjust education programs more flexibly, thereby ensuring a quality academic education.

The Faculty of Humanities and Social Sciences aims to contribute academically with practical relevance to community vitalization, to construct a research hub for human and social science studies in order to actively produce worldwide scholarly achievements, and to promote global level research through active collaboration among members of the human/social science and legal fields. In human science fields such as psychology, history and sociology in particular, the Faculty also intends to augment relationships and cooperation with overseas colleges and universities and bring about greater research achievements internationally, thereby shifting conventional academic culture studies to a more invigorating course infused with international cooperation.

The Faculty is also contributing to the field of conflict resolution by consolidating the research resources of humanities, law and policy in order to establish a solid foundation of international standards in research, and to develop practical areas of research that will be able to respond to the various demands of society.

## ■ Institution ■

### **International Research Center for Humanities and Social Sciences**

The International Research Center for Humanities and Social Sciences (IRCHSS) was established in 2020 as a project based research organization affiliated with the Faculty of Humanities and Social

Sciences for the global and local promotion of research activities in selected fields where ongoing research by the faculty members has had significant achievement and deserves international recognition. The initial two projects of the Center are New Approaches to Theories and Methods of Historical Document and Artifact Analysis and Research Resource Archives for Interdisciplinary Studies.





### Faculty of Education

■ **Curricula**

Elementary School Teacher, Junior High School Teacher, Special Needs Education Teacher, School Health Teacher

■ **Departments**

Japanese, Social Studies, Mathematics, Natural Science, Music, Art, Health and Physical Education, Industrial Technology, Living Sciences, Foreign Languages (English), Special Needs Education, School Health, Pedagogy, Psychology

### Graduate School of Education (Professional Graduate School)

Professional Development Course in School Education

## ■ Faculty of Education

The Faculty of Education was established in May 1949 under the new Kumamoto University system. It originated from schools such as the Kumamoto Teacher's High School created in 1874.

The Faculty of Education currently has four courses. One course trains teachers for the elementary school and junior high school levels, while others train teachers for other types of schools.

In addition, at the Center for Educational Research and School Development, students can receive advice on matters related to educational practice, particularly what to do when problems occur on the job. The Center also engages in practical research.

### ■ Institution ■

#### Center for Educational Research and School Development

The Center analyzes and seeks practical solutions to the problems that arise in education. It also conducts research on what types of classes and curricula meet contemporary needs. To achieve these aims, it has established an Education Clinic Division, comprised of an Education Consultation Section and an Education Organization Section, and an Education Curriculum Division. It also develops comprehensive, practical activities in cooperation with related organizations.

### ■ Special Courses ■

#### Diploma Course in Special Needs Education

This course is geared toward incumbent teachers as well as current students from Kumamoto University and toward students with a BA degree or higher from other universities. Through specialized instruction in special needs education, the course helps students to fulfill the requirements for their Diploma and teaching certificate in Special Needs Education.

#### Yogo Teacher Training Special Course

This course is meant to produce highly qualified Yogo teachers. It is designed for those who already have their nursing license, as well as those who are in the process of obtaining it. The curriculum consists of general education subjects, specialized subjects in Yogo teacher and specialized subjects in teaching.

## ■ Graduate School of Education (Professional Graduate School)

The Graduate School of Education was newly started in April of 2017, the only major being: Teacher Training Practices and Development.

The purpose of this major is to develop practical skills in teaching, guiding students, and in managing schools themselves, as well as developing the ability to conduct research on these topics.

This major is staffed with both researchers and practitioners.

In April, 2020, the Graduate School of Education was expanded and started to offer the following three courses: 1) Advanced Course in Educational Practices, 2) Advanced Course in School Subject Methods and Practices, and 3) Advanced Course in Special Needs Education.

Students who complete the Graduate School of Education course receive a professional degree of Master of Education and their Advanced Class Teacher Certificates.

**URL:** <https://www.educ.kumamoto-u.ac.jp/?lang=en>



## Faculty of Science

### ■ Department

Department of Science

### ■ Courses

Mathematics, Physics, Chemistry, Earth and Environmental Sciences, Biology

### ■ Faculty of Science

The Faculty of Science was established in May 1949 as one of the faculties under the new Kumamoto University system. It grew out of the science department of the Fifth High School, which was established in October 1887, and one part of Kumamoto Kogyo Senmon (Technical) High School. The Faculty of Science underwent some dramatic changes in 2004. The existing departments were merged into one department containing 5 courses. In addition, students are now able to decide what kind of educational program they want during their first two years after entering the university. Then, after accessing what course is right for their own needs, students choose a major in their junior year.

At the same time, the Faculty of Science provides detailed educational services that are targeted to individual students

through the implementation of such things as a departmental staff tutoring system.

While conducting fundamental research, which is what they specialize in, the Faculty of Science also actively conducts applied research in specific fields that meets the needs of communities and society. Although the path students take after they graduate usually involves obtaining employment in fields such as the government and other public offices, business, or the teaching profession, many students also choose to continue their education by entering a master's program.

**URL:** <http://www.sci.kumamoto-u.ac.jp/index.html>



### Faculty of Engineering

- **Department of Civil and Environmental Engineering and Architecture**
  - Civil and Environmental Engineering
  - Urban and Regional Planning and Design
  - Architecture and Building Engineering
- **Department of Mechanical and Mathematical Engineering**
  - Mechanical Engineering
  - Mechanical Systems
  - Applied Mathematics
- **Department of Computer Science and Electrical Engineering**
  - Electrical Engineering
  - Electronic Engineering
  - Computer Science
- **Department of Materials Science and Applied Chemistry**
  - Chemistry and Bioscience
  - Chemistry and Materials
  - Materials Science and Engineering

### Faculty of Engineering

The origin of the Faculty of Engineering was the Department of Engineering of the Fifth High School, which was established in 1897. Since then, the university has turned out about 40,000 alumni who are working actively all around the world. Thanks to an existing alumni network, graduates have been able to find work with many quality companies. Many other students choose to continue their education in a master's program after they graduate. The goals of the Faculty of Engineering are two-fold. First, it aims to contribute to the well-being of humankind and the development of society by creating the technology to help society coexist with the global environment. The second aim is to foster people with a rich sense of humanity who can contribute to the global and local communities by looking at things from a global point of view.

### Institution

#### Engineering Research Equipment Center

Various measuring and testing instruments (TEM, LVP-SEM, XRD, ESCA, etc. - about 20 models) are made available for advanced experiments and research by allowing their shared use.

#### Education Center for Global Human Resources in Engineering

At this center, basic courses (basic engineering, engineering English), fundamental department courses, and sub-education programs (creative engineering and design, global extension, entrepreneurship, disaster prevention and mitigation, etc.) are offered to all departments of the Faculty of Engineering.

URL: <https://www.eng.kumamoto-u.ac.jp/english/>



### ■ Faculty of Advanced Science and Technology (FAST)

Keeping with the trend towards placing priority on graduate school education, and following the establishment of the Faculty of Life Sciences, the Graduate School of Science and Technology was reorganized in April 2016 and the Faculty of Advanced Science and Technology (the organization that the faculty members belong to) was established. Pursuant to this change, the Faculty is responsible for organizational management and the Graduate School is responsible for graduate school education.

The Faculty of Advanced Science and Technology consists of 5 divisions: Natural Science, Materials Science and Chemistry, Industrial Fundamentals, Informatics and Energy, and Social Infrastructure and Environment. There are a total of 31 research fields under these 5 divisions. The Faculty aims to promote advanced natural sciences that will contribute to our coexistence with the global environment and to the sustainable development of society. The Faculty also aims to create an academic hub for advanced research in applied technologies. Through close cooperation between scientific and engineering departments, we launched this new organization system to promote unique and advanced research and applied research that will respond to social needs. We will endeavor to deepen scientific technology in a comprehensive manner, create new scientific technologies, and promote individualization of the graduate school.

### ■ Institution ■

#### **Innovative Research and Education Center for Engineers in Kumamoto University**

The center provides access to equipment mainly in the field of engineering via web-based databases to support the research and education. Although the center itself has no equipment, Engineering Research Equipment Center, Central Factory of the Faculty of Engineering and Kurokami Radio-isotope Laboratory manage equipment and collaborate with the Center to provide open access for all faculties of Kumamoto University and some facilities already open to the local community.

#### **International Research Center for Agricultural and Environmental Biology (IRCAEB)**

The International Research Center for Agricultural and Environmental Biology (IRCAEB) was founded in April 2021 to facilitate collaboration among researchers from molecular genetics, chemistry, agronomy and pharmacology, as well as basic and applied research among academics and industry experts. IRCAEB is divided into the Department of Basic Research and the Department of Molecular Agriculture, and aims to enhance the productivity and sustainability of Kumamoto's agriculture and fishery industries, while connecting with the international community to disseminate its research findings.

URL: <https://www.fast.kumamoto-u.ac.jp/en/home/>

### Graduate School of Science and Technology (GSST)

After restructuring in 2006, the Graduate School of Science and Technology became a new research graduate school to conduct post-graduate education with a strong focus on research. GSST now covers 5 departments in the Master's Course and 2 departments in the Doctoral Course. With rapid globalization in international communities, it has become vitally important to promote international collaboration with overseas universities, both in research and education, as well as collaboration with graduate schools, industry and government institutions in Japan, to be able to provide an international and interdisciplinary environment for the students.

We are committed to fostering students who can approach problems arising out of a wide range of complex issues with leadership and creativity, and to making GSST an international institution marked by the active creation of knowledge and the free exchange of ideas.

URL: <https://www.fast.kumamoto-u.ac.jp/gsst-en/>

### Institution

#### Global Joint Education Center for Science and Technology (GJEC)

For the future of graduate education, we need to promote globalization and to foster individuals with greater innovation skills through science and technology. To achieve this goal, it is vital that students add depth to their basic skills in their field of specialization and that their innovative skills are applied with a wider vision. The Global Joint Education Center for Science and Technology (GJEC) was established in GSST in April 2007, and allows students to take courses in different fields to develop innovation skills. In GJEC, we also provide Advanced General Education subjects. These subjects provide students with a broad knowledge of topics across the fields of science and technology, and enhance their application of future academic skills in society.

#### Master's Course

Department of Science	Mathematics
	Physics
	Chemistry
	Earth and Environmental Sciences
	Biological Sciences
Department of Civil and Environmental Engineering and Architecture	Civil and Environmental Engineering
	Urban and Regional Planning and Design
	Architecture and Building Engineering
Department of Mechanical and Mathematical Engineering	Mechanical Engineering
	Mechanical Systems
	Applied Mathematics
Department of Computer Science and Electrical Engineering	Electrical Engineering
	Electronic Engineering
	Computer Science
Department of Materials Science and Applied Chemistry	Chemistry and Bioscience
	Chemistry and Materials
	Materials Science and Engineering

#### Doctoral Course

Department of Science	Mathematics
	Physics
	Chemistry
	Earth and Environmental Sciences
	Biological Sciences
Department of Advanced Industrial Science	Environmental Conservation Engineering
	Environmental Management and Planning
	Architecture and Environment Planning
	Building Materials and Structures
	Advanced Mechanical Systems
	Intelligent Mechanical Systems
	Applied Mathematics
	Computer Science and Communication Engineering
	Frontier Technology for Energy and Devices
	Human and Environmental Informatics
	Applied Chemistry and Biochemistry
	Materials Science and Engineering



### School of Medicine

■ **School of Medicine**

**Subjects** → Molecular and Cellular Biology, Molecular Genetics, Anatomy and Histology, Physiology and Biochemistry, Microbiology and Immunology, Pathology and Pharmacology, Social and Environmental Medicine, Internal Medicine, Surgery, Developmental Medicine, Bioethics, Sensory and Motor Medicine, Clinical Neurology and Psychiatry, Integrated Medicine

■ **School of Health Sciences**

**Courses** → Course of Nursing, Course of Radiological Sciences, Course of Medical Laboratory Sciences

### Graduate School of Medical Sciences

■ **Master's Course**  
Medical Sciences

■ **Doctoral Course**  
Medical Sciences

### Graduate School of Health Sciences

■ **Master's Course**  
Nursing, Radiological Sciences, Medical Laboratory Sciences

■ **Doctoral Course**  
Nursing, Radiological Sciences, Medical Laboratory Sciences



### School of Medicine

The Kumamoto University School of Medicine comprises the School of Medicine, which offers a six-year medical degree program, and the School of Health Sciences, which offers a four-year health sciences degree program. The Kumamoto University School of Medicine fosters doctors and medical professionals possessing cutting-edge medical knowledge and deep compassion for their patients.

The School of Medicine has produced over 10,000 graduates since it was established as the independent Kumamoto Medical School in 1896. Specialized instruction in the field of medicine is provided by faculty members in medicine and life sciences. The School of Medicine has developed a curriculum that mostly reflects actual medical research and medical care, focusing on fostering medical doctors with excellent personal communication skills. The Center for Medical Education and Research was founded in October 2010 with the mission of educating medical professionals. This Center carries out research on educational systems, curriculum reform of the Medical School, education of clinical medicine and practical techniques, and so forth.

In October 2003, the College of Medical Sciences, which included an advanced midwifery course, and the Nursing Teacher Training course from the Faculty of Education were integrated into the School of Health Sciences. The School has three courses (Course of Nursing, Course of Radiological Sciences, Course of Medical Laboratory Sciences), and aims to provide a spiritually rich education based on respect for life and humanity, along with a high level of specialized knowledge, and is cultivating medical staff, researchers, and educators who are highly qualified to contribute to many facets of society as members of medical teams.

URL: <http://www.medphas.kumamoto-u.ac.jp/en/medical/index.html>

### Graduate School of Medical Sciences

The Graduate School of Medical Sciences was remodeled and established in April 2003 as a graduate school educational institution with the aim of cultivating medical researchers, educators, and advanced medical staff.

The graduate school consists of a four-year doctoral course and a two-year master's course that was established in 2002. The master's course (in Medical Sciences) was created in response to the upsurge in medical and biological research, as well as societal needs. The course is designed for graduates of 4-year undergraduate programs. Each academic year sees 20 students enrolled, for a total of 40 students. Graduates of the master's course are encouraged to continue their education by enrolling in the doctoral course. The doctoral course (Medical Sciences specialty) contains 88 students per academic grade, for a total of 352 students. Personalized education with research guidance is supplemented by courses in experimental medicine and graduate school seminars. Students complete the course by publishing their original research results in an international academic journal and writing a comprehensive thesis.

The Graduate School has many special courses and programs such as "Course for Researchers of Developmental Biology and Regenerative Medicine," "Course of Educational Program for Advanced Research in Infectious Diseases and AIDS," "Course of Developmental Biology and Regenerative Medicine," "Program for Experts of Metabolism, Circulation and Related Informatics," and "Course of Educational Program for Extension of Healthy Life Expectancy," and a unique MD/PhD course, the Shibasaburo Program. The school has concluded the academic exchange agreement including double degree program with many universities overseas.

All courses are taught by instructors who belong to approximately 90 diverse research areas and medical care fields from the following: the Faculty of Life Sciences, Kumamoto University Hospital, the Health Care Center, the Institute of Resource Development and Analysis, the Joint Research Center for Human Retrovirus Infection, the Institute of Molecular Embryology and Genetics, the International Research Center for Medical Sciences, and the Center for Metabolic Regulation of Healthy Aging.

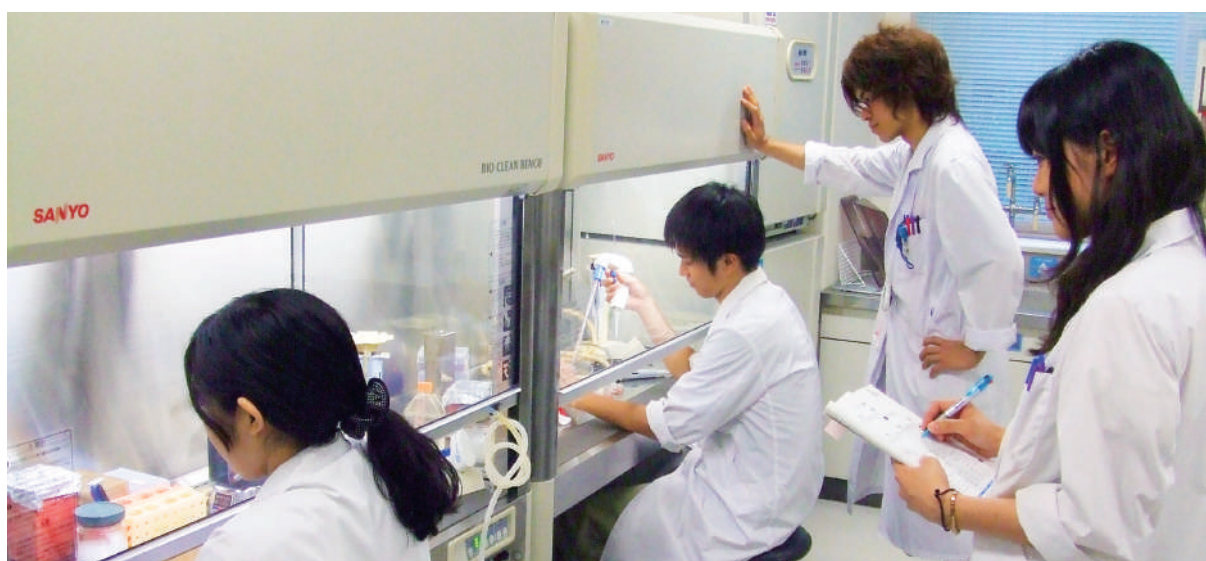
URL: <http://www.medphas.kumamoto-u.ac.jp/en/medgrad/>

### Graduate School of Health Sciences

The Graduate School of Health Sciences was established in April 2008, and its doctoral program started in April 2010. The graduate school consists of the nursing course, the radiological sciences course and the medical laboratory sciences course. The school aims to foster specialists and produce researchers and educators who can incorporate a wide range of advanced medical knowledge to establish and develop the educational system of health sciences. Each department requires 2 years of study for the master's program and 3 years for the doctoral program. Each academic year of the master's program has room for a total of 24 students. Students can obtain a master's degree in either Health Sciences or Nursing.

Each academic year of the doctoral program is limited to 6 students. Conditions for completion of the doctoral program require a successful review of a doctoral thesis and a passing grade on the final examination. Students can obtain a doctor's degree in either Health Sciences or Nursing.

URL: <http://www.hs.kumamoto-u.ac.jp/en/>



### School of Pharmacy

#### ■ Department

School of Pharmacy, School of Pharmaceutical and Life Sciences

#### ■ Subject

Molecular and Genomic Pharmacy, Medicinal Chemistry, Life and Environmental Sciences, Clinical Pharmacy, Biomedical Polymer Sciences, Drug Delivery Sciences

### Graduate School of Pharmaceutical Sciences

#### ■ Master's Course

**Pharmaceutical and Life Sciences** → Drug Delivery, Bio-Pharma, Medicinal Chemistry, Life Science

#### ■ Doctoral Course

**Clinical Pharmacy** → Pharmaceutical Health Care and Sciences, Clinical Pharmaceutical Sciences

**Pharmaceutical and Life Sciences** → Drug Delivery, Bio-Pharma, Medicinal Chemistry, Life Science

### School of Pharmacy

The School of Pharmacy is based upon the principle that the pharmaceutical sciences are the integrated science contributing greatly to human health through medication. Students acquire a basic knowledge relating to the development, production and management of pharmaceutical products, environmental and health science as well as many other skills required for pharmacists. The school aims to cultivate creative graduates with high pharmaceutical scientific and ethical abilities based on life sciences. The school conducts basic practical and clinical training together with modern lectures that focus on education, from the three perspectives of knowledge, technique, and bedside manner. After graduating, students go on to work in various fields, as pharmacists in hospitals, pharmacies, pharmaceutical and chemical companies or in government and other public facilities. However, many graduates continue their education at graduate level to become either pharmaceutical researchers or advanced pharmacists.

In 2006, the pharmaceutical sciences course was split into the School of Pharmacy, a six-year course for the cultivation of pharmacists, and the School of Pharmaceutical and Life Sciences, a four-year course focusing on the training of researchers.

### Graduate School of Pharmaceutical Sciences

The Graduate School of Pharmaceutical Sciences was established in April 2003 by partially integrating the faculties of the Institute of Molecular Embryology and Genetics (IMEG) and the Institute of Resource Development and Analysis (IRDA). This was preceded by the creation of the Faculty of Medical and Pharmaceutical Sciences. Thus, graduate students are educated by teaching staff from the Faculty of Life Sciences (founded in January 2010 by re-organizing the Faculty of Medical and Pharmaceutical Sciences), IMEG and IRDA. The school takes advantage of the strength of each faculty member to provide a great number of educational programs by combining pharmaceutical sciences and medical fields such as bioethics, genetics, embryology, cardiovascular, metabolism, and translational research. These unique educational programs further reinforce the foundation of basic pharmaceutical knowledge acquired during undergraduate studies.

The Graduate School aims to cultivate pharmaceutical researchers and advanced pharmaceutical specialists who can act independently and provide leadership in a wide variety of pharmaceutical fields involving the creation of medicinal products, biomedical research, and clinical/public health administration.

URL: <http://www.pharm.kumamoto-u.ac.jp/en/>



**Faculty of Life Sciences**

The Kumamoto University Faculty of Life Sciences is one of the leading schools in the fields of medicine, pharmacy, and health sciences in Japan. The Faculty of Life Sciences comprises three divisions (Integrated Medical and Pharmaceutical Sciences, Advanced Biomedical Sciences, and Environmental and Sociomedical Sciences), 14 specialized areas, and 59 departments, with affiliated facilities such as the Southern Kyushu and Okinawa Unit Center of the Japan Environment and Children’s Study, the Center for Metabolic Regulation of Healthy Aging, and the Global Center for Natural Resources Sciences. The mission

of the Faculty of Life Sciences is threefold: (1) to produce world-class, cutting-edge knowledge through research activities, (2) to contribute to the health and welfare of society and humankind by using research knowledge as a driving force, and (3) to train the next generation of professionals who will play an active role in the local region and worldwide. To achieve these goals, faculty members in medicine, pharmacy, and health sciences conduct research based on interdisciplinary collaboration while maintaining their specialized capabilities and academic identities.

URL:<http://www.medphas.kumamoto-u.ac.jp/en/faculty/index.html>

### ■ Institution ■

#### Southern Kyushu and Okinawa Unit Center of Japan Environment and Children's Study

Southern Kyushu and Okinawa Unit Center of Japan Environment and Children's Study was founded as a research institute in July 2010 under the Faculty of Life Sciences at Kumamoto University. Children are exposed to various environmental risks, such as natural and manmade chemicals and socio-economic factors. The Japanese government (Ministry of the Environment) established a birth cohort study in 2010 to understand the effects of children's environmental exposures and to explore ways to reduce children's risks from environmental exposures. The Unit Center collects data within the designated study regions, and investigates environmental factors that affect children's health and development.

#### Center for Metabolic Regulation of Healthy Aging

Japan is now a "super-aged" society, and extending healthy life expectancy is one of the most important issues. On May 1, 2018, we launched a new Center for Metabolic Regulation of Healthy Aging (CMHA). CMHA comprises five divisions: (1) Metabolic and Circulatory Research, (2) Cancer and Stem Cell Research, (3) Nervous System, Sensory, and Locomotive Research, (4) Animal Models of Aging Research, and (5) Epidemiological Research. The goal of CMHA is to advance research on aging and healthy aging, and to train internationally competitive human resources in these fields.

#### Center for Medical Education and Research

The Center for Medical Education and Research was founded in October 2010 to contribute to the training of medical professionals through research and practice in order to achieve its educational mission of fostering medical specialists. The Center carries out (i) research on building systems for the education of medical professionals, (ii) curriculum reform aligned with a new medical education system, (iii) instruction in clinical medicine via student participation and practice in clinical medicine and procedures, etc.



#### Global Center for Natural Resources Sciences (GCNRS)

The Global Center for Natural Resources Sciences (GCNRS) promotes natural product sciences and the UpRod project<sup>1)</sup> by utilizing a global research collaboration to improve lives and human health through developing innovative novel medicines. GCNRS will contribute to the development of human networks and resources related to the conservation of natural resources in different parts of the world. Furthermore, in cooperation with various related companies, this center will promote drug discovery research geared toward realizing the vision of a global society where natural ecosystems and human health are coordinated and harmonized.

<sup>1)</sup> UpRod project: In this project, we collect useful natural products that are not yet utilized around the world, extract active ingredients, and evaluate their pharmacological efficacy. We then select and optimize drug candidate compounds before we commercialize them.

#### Center for Biomedical Laboratory Science

The development of clinical laboratory techniques has led to the highly advanced medical diagnostic technology available today. To ensure the sustainable development of medical care, it is important to promote the development of new diagnostic technologies and cultivate human resources by reinforcing research at the university. We also have a duty to provide medical laboratory techniques developed in the university to the community as part of our social contributions. The Center for Biomedical Laboratory Science was affiliated with the Faculty of Life Sciences in Kumamoto University on April 23, 2021 to promote research and development of novel laboratory techniques, training of advanced medical professionals, and provide laboratory tests to the community. The Center carries out administrative screening inspections and mutational analyses of SARS-CoV-2 in partnership with Kumamoto city and prefectural governments and conducts research and development on novel inspection technologies. Through this work, the Center also trains advanced medical professionals.

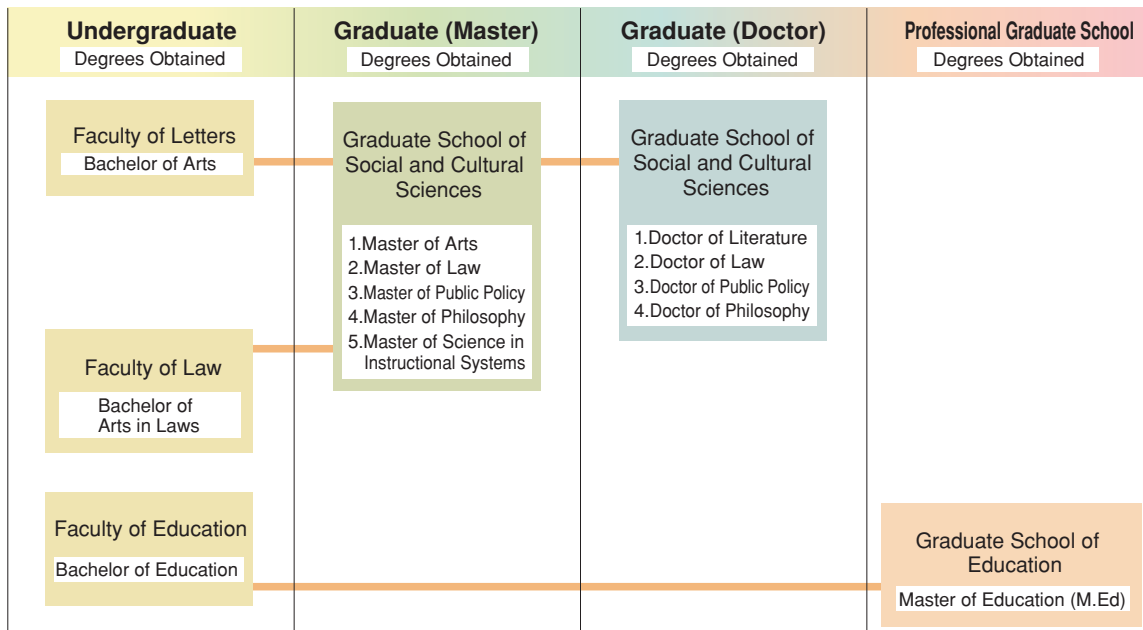


# GCNRS

Global Center for Natural  
Resources Sciences

# UNDERGRADUATE AND GRADUATE COURSES

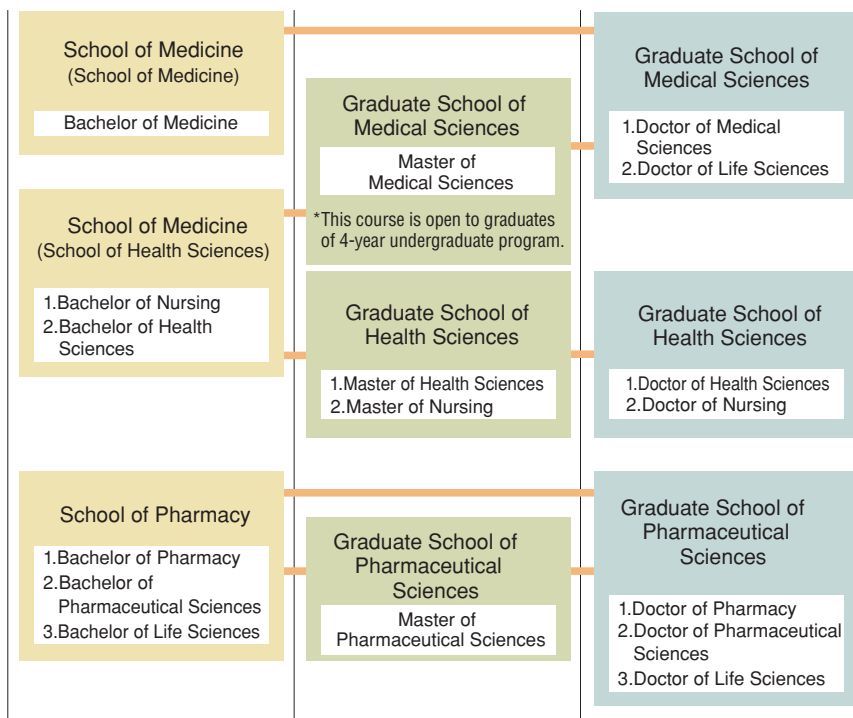
## Humanities and Social Sciences



## Science and Technology



## Life Sciences



The above chart is an example of pursuing higher education between undergraduate and graduate courses, but is not comprehensive.

# Centers and Institutes

## Institute of Molecular Embryology and Genetics

発生医学研究所



The Institute of Molecular Embryology and Genetics aims to contribute to society by promoting the integration of life and medical sciences from the viewpoint of developmental biology. This institute was founded in 1992, and extensively reorganized in 2000 and 2009. It has three divisions (Developmental Regulation, Stem Cell Research, and Organogenesis) consisting of 13 laboratories. Our research interests include: epigenetics, chromosome and protein regulation, DNA damage and repair, intercellular communications, ES and iPS cells, mesenchymal stem cells, hematopoietic differentiation, gametogenesis, brain morphogenesis, muscle regeneration, and kidney development. The 21st Century Center-of-Excellence (COE) Program (2002-2006), followed by the global COE Program (2007-2011), promoted the outstanding research and educational activities in the Institute. In addition, the Center for Organ Regeneration Research was launched in 2012 to realize regenerative medicine through scientific collaborations with the University Hospital. Furthermore, the Institute is selected as one of the Joint Usage/Research Centers in Japan, and supports the research community.

URL: <http://www.imeg.kumamoto-u.ac.jp/en/>

## Institute of Industrial Nanomaterials

産業ナノマテリアル研究所



The Institute of Industrial Nanomaterials was established in April 2020 to specialize in two-dimensional nanomaterials, including nanosheets, surfaces, and grain boundaries. Two-dimensional nanomaterials are expected to greatly innovate materials chemistry, and therefore we perform research in various fields spanning the basics of two-dimensional nanomaterials involving nanosheets and surfaces/grain boundaries to specialized practical applications for these nanomaterials. The Institute has a comprehensive research facility to promote two-dimensional nanomaterial research, as well as special synthesis process facilities including an explosion experiment and bioelectrics research facilities of the formerly Institute of Pulsed Power Science. These facilities are provided not only for on-campus faculty and students, but for researchers at companies and other universities as well.

URL: <http://www.iina.kumamoto-u.ac.jp/>

## Priority Organization for Innovation and Excellence

大学院先導機構



The Priority Organization for Innovation and Excellence was established to contribute to the enhancement and development of educational research activities at Kumamoto University. It does so by enriching and improving the graduate schools, and by promoting the world's most advanced COE (Center of Excellence) Studies Program; a highly evaluated program that encompasses life science, natural science, social and cultural sciences and interdisciplinary, multiple, or new disciplines base on organic cooperation between the fundamental sciences and the applied sciences. This has brought the creation of the new COE, a new research center and several new graduate courses (majors).

URL: <http://poie.kumamoto-u.ac.jp/en/>

## Organization for Globalization

グローバル推進機構

In 2014, Kumamoto University was chosen by the Ministry of Education, Culture, Sports, Science, and Technology (MEXT) as a member of the "Top Global University Project", to be a leading model for university reform in Japan, cultivating global human resources leadership, and actively promoting globalization efforts at home and abroad.

The Organization for Globalization was established on March 1, 2015 to address university-wide globalization. The Organization for Globalization was reorganized to establish the vice president as Director in April, 2018, to further strengthen globalization efforts in Kumamoto University.

## Headquarters for Admissions and Education

大学教育統括管理運営機構

The Headquarters for Admissions and Education serves as a high governance organization to supervise quality control of higher education in Kumamoto University. Dealing with a changing entrance examination system and supporting both undergraduate and postgraduate students who are entering Kumamoto University during these changes, this organization constructs, supervises, and manages educational programs based on the analyses of enormous volume of educational data and in accordance with the vision, policy and strategy of the university as a core organization.

### ■ Mathematical Science Education Center ■

附属数理科学総合教育センター

The Mathematical Science Education Center (MSEC) in the Headquarters for Admissions and Education was established in January 2019 with the aim of promoting and enhancing mathematical science education including data science. MSEC also aims to improve mathematical science education in Kumamoto by cooperating with regional universities, technical colleges, and high schools.

In order to achieve these goals, MSEC improves teaching methods at Kumamoto University and prepares effective teaching materials related to mathematics and data science.

### ■ Center for International Education ■

附属多言語文化総合教育センター



The Center for International Education, affiliated with the Headquarters for Admissions and Education, offers multilingual, multicultural, and multidisciplinary studies courses aimed at equipping graduates with the skills needed to work on a global scale. These subjects help students develop deep comprehension of social and natural sciences, learn modern languages, and understand the values of various foreign countries and cultures, thereby providing them the tools needed to think both comprehensively and globally.

The Center is involved in cooperative learning programs between high schools and the university, and also works together with local businesses and the community.

## Institute of Light Metals (ILM)

先進軽金属材料国際研究機構

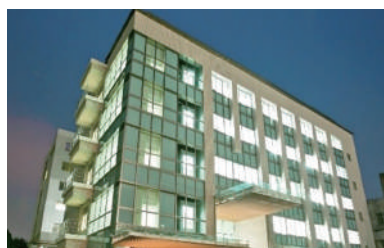
In April 2021, Kumamoto University established the Institute of Light Metals (ILM), together with the University of Toyama. This Institute is dedicated to advanced research and education on light metallic materials based on magnesium, aluminum and titanium, and is the first such hub in Japan.

The scope of the ILM is science, technology, education and international outreach. Moreover, ILM aims to help solve important issues regarding the environment, energy, sustainability, disaster prevention and mitigation, and biomedical technology by leveraging the robust research and development resources of the Magnesium Research Center of Kumamoto University and the Aluminum Research Center of the University of Toyama.

The ILM will also play a key role in enhancing industries in Japan by conducting integrated research and development on magnesium, aluminum and titanium alloys.

## International Research Center for Medical Sciences (IRCMS)

国際先端医学研究機構



The International Research Center for Medical Sciences (IRCMS) was launched as the managing organization in April of 2015 to oversee Kumamoto University's Center of Excellence for world-class research in the life sciences. The center partners with other life science institutes in Kumamoto University to promote collaborative international research with distinguished research institutes overseas, and scouts and trains young investigators who contribute to ground-breaking discoveries in the medical sciences.

The center aims for 50% foreign researcher population, including Ph.D. graduate students. To reach this goal, the research environment within the IRCMS is equivalent to world-class research institutes found in western countries, and makes provisions for smooth international research collaborations.

The center has designated English as the official language, and features an open lab layout with few walls and partitions between labs to facilitate communication among scientists. It is expected that this will promote fusion research between the various fields within the institute.

URL: <https://ircms.kumamoto-u.ac.jp/>

## International Research Organization for Advanced Science and Technology (IROAST) 国際先端科学技術研究機構



The International Research Organization for Advanced Science and Technology (IROAST), established in April 2016, is a Center of Excellence at Kumamoto University that promotes world-class, cutting-edge research in science and technology. Featuring a standardized international research environment that collaborates globally, the Organization utilizes a tenure-track personnel system.

IROAST encourages international collaboration to establish international research networks, recruit and develop excellent young researchers, promote ongoing leading-edge research, and initiate innovative interdisciplinary research projects. The Organization currently focuses on four areas of science and technology: Nanomaterial Science, Green Energy, Environmental Science, and Advanced Green Bio. Through these efforts, as a prominent global hub of cutting-edge research, IROAST aims to conduct the most innovative and advanced research and lead the world toward a safe and sustainable future.

URL: <http://iroast.kumamoto-u.ac.jp/>

## Center for Management of Information Technologies

総合情報統括センター



The Center for Management of Information Technologies was established as the central organization to organically integrate the university computer systems and info-communication networks. Our mission is to use information technology to improve education and research at Kumamoto University. To achieve this, we research information processing, provide help with information-related research, and educate on information literacy. We also provide, operate, and maintain computer and network equipment at Kumamoto University.

URL: <http://www.cc.kumamoto-u.ac.jp/en/>

## Kumamoto Innovative Development Organization (KIDO)

熊本創生推進機構



The Kumamoto Innovative Development Organization (KIDO) was established on April 1st, 2017 with the aim of contributing to the development of the Kumamoto region. In April 2018, KIDO was reorganized as a unified consulting department that provides systematic and strategic solutions to the needs and problems of the Kumamoto region. KIDO works actively in industry promotion, creation of employment opportunities, reconstruction after the Kumamoto Earthquakes of 2016, local problem solving, and developing community-oriented human resources.

URL: <https://ewww.kumamoto-u.ac.jp/en/centers/organizations/policy>

## Research Center for Instructional Systems

教授システム学研究センター

The Research Center for Instructional Systems (RCiS) consists of three research departments and two operations departments. The research departments aim to make RCiS a world-leading research center for instructional systems. The operations departments are the Institute for e-Learning Development (leLD) and the Faculty Development Activity Support Unit. RCiS is distinctive in that it offers practical fields inside and outside Kumamoto University, and conducts research on both vocational education and higher education. As the first instructional systems research center in Japan, RCiS is the reason why Kumamoto University is unparalleled in instructional systems and instructional design. RCiS works closely with research centers both inside and outside Japan. The Center develops instructional systems and contributes to society through joint research with associate research institutions (including corporations and institutions of higher education) and associate researchers from the Kumamoto University Graduate School of Instructional Systems and elsewhere.

URL: <http://www.gsis.kumamoto-u.ac.jp/en>



## Eisei-Bunko Research Center

永青文庫研究センター



The Eisei-Bunko Research Center was established in 2009 as a facility affiliated with the Faculty of Letters. In April 2017, the Center was reorganized as an Inter-Department Institute for Education and Research to expand its achievements in research and social contributions more broadly.

Research is focused on the Eisei-Bunko Collection, a collection of documents related to the Kumamoto Domain. This collection is currently housed at Kumamoto University, and the documents are among the most detailed and extensive accounts of daimyo-era Japan available, both in terms of quality and quantity. This is a priority area for research and philanthropy unique to Kumamoto University.

Through the general study of the Eisei-Bunko Collection and other documents, the Eisei-Bunko Research Center has developed a solid research foundation. The Center also cooperates with culture organizations and local government to provide the results of its studies to the local community. In addition to this, the Center helps train students to be able to contribute in promoting culture and research that focuses on the humanities and social sciences.

URL: <http://eisei.kumamoto-u.ac.jp/en/>

## Center for Water Cycle, Marine Environment, and Disaster Management (CWMD) くまもと水循環・減災研究教育センター

The Center for Water Cycle, Marine Environment, and Disaster Management (CWMD) was established in April 2017. CWMD consists of four laboratories: the Water Resource Research Laboratory; the Marine Science Laboratory; the Disaster Mitigation Laboratory and the Urban and Regional Design Laboratory. The Center is a leader in research and education on groundwater resources in Kumamoto, the marine environments of the Ariake and Yatsushiro Seas, disaster mitigation, and community design and participation.

### ◆ Water Resource Research Laboratory

Through research and academic efforts, aims to protect the water cycle as it relates to groundwater resources.

### ◆ Marine Science Laboratory

Performs research on biodiversity and ecosystems, sustainable development and conservation of marine resources, and analysis of environmental changes in coastal seabeds.

### ◆ Disaster Mitigation Laboratory

Promotes a wide range of research and education in disaster prevention and reduction activities to develop and sustain a disaster-resilient society.

### ◆ Urban and Regional Design Laboratory

Works on designing and implementing a livable, resilient, and sustainable local society that actively involves local communities and residents.

URL: <https://cwmd.kumamoto-u.ac.jp/en/>

## ■ Aitsu Marine Station ■

合津マリンステーション



The Aitsu Marine Station is located where the Ariake and Yatsushiro Seas meet, at an area remarkable for its 5-meter difference in sea level at low and high tides. No other marine station is situated at a place with such a high change in tides. Aitsu Marine Station is staffed by four people specialized in bioresource and biodiversity analysis who conduct training and research. The station has 3 buildings: a 3-story dormitory for researchers (589 m<sup>2</sup>), a 2-story building for practical study (785 m<sup>2</sup>), and a 1-story building for breeding marine creatures.

There are 2 boats: the Dolphin Super Challenger and Shiranuhi.

## The Memorial Museum of the Fifth High School

五高記念館



Photograph by Toru Sakamoto

The Memorial Museum of the Fifth High School is composed of two historic buildings - the main Fifth High School building and the Chemical Laboratory - both of which are Important Cultural Properties. The Museum exhibits historical documents and artifacts related to education and activities at the Fifth High School. In addition to its exhibits, the Museum also holds lectures, lessons on cultural topics, experiential learning meetings, and concerts. Community activities and the support of lifelong learning are central to the mission of the Memorial Museum of the Fifth High School.

URL: <http://www.goko.kumamoto-u.ac.jp/en/>

※The Museum is currently closed due to damage sustained in the Kumamoto Earthquakes of 2016

## Magnesium Research Center (MRC)

先進マグネシウム国際研究センター



For many years, there has been a strong demand in the transportation industry, including automotive, rail and aerospace, for ways to reduce the weight of structural components, in order to reduce both energy consumption and CO<sub>2</sub> emissions. Magnesium is the lightest known structural metal and magnesium alloys are increasingly being used in a wide range of applications for both structural and functional benefits. The Magnesium Research Center (MRC) at Kumamoto University, established in December 2011, has engaged in and dedicated to a variety of magnesium-related research areas. They include alloy and process design, microstructure analysis, mechanical property characterization, corrosion, surface protection and recycling.

MRC has also developed an international magnesium research network. MRC has three missions: 1) to provide state-of-the-art research and education, 2) to develop a global research network, and 3) to promote international research collaboration.

URL: <http://www.mrc.kumamoto-u.ac.jp/en/>

## Institute of Resource Development and Analysis

生命資源研究・支援センター



The Institute of Resource Development and Analysis (IRDA) was established for the purpose of promoting comprehensive education and research in various scientific areas by providing diverse research resources and information. Two major objectives of the IRDA are: 1) Production, development, preservation, and supply of experimental animals, including genetically engineered animals, and construction and analysis of databases using advanced bioinformatics, and mouse phenotyping analysis and 2) Research, education, enlightenment, data management, and technical support for experiments using laboratory animals, genetic materials, and radioisotopes.

URL: <http://irda.kuma-u.jp/en/index.html>

## Joint Research Center for Human Retrovirus Infection

ヒトレトロウイルス学共同研究センター



On April 1, 2019, the Center for AIDS Research of Kumamoto University and the Center for Chronic Viral Diseases of Kagoshima University merged to form the Joint Research Center for Human Retrovirus Infection. This inter-university research center between two National University Corporations is a pioneering enterprise in Japan. The Center focuses on the prevention and eradication of human retroviruses, the latency of which has made it a challenging global health problem. To this end, we conduct global research and education based on our research achievements regarding the pathogenesis of human retroviruses. We are also developing our strengths—AIDS research at the Kumamoto campus and HTLV-1/HBV research at the Kagoshima campus—by utilizing economies of scale and the resources of our parental centers, clarifying our goals, educating the next generation of researchers, and sharpening our competitive edge in the world.

## University Archives

文書館

The University Archives was established on April 1, 2016. Our aim is to collect, preserve and provide research materials related to: the history of Kumamoto University; local Kumamoto history and culture; and social issues that occurred in the Kumamoto area, such as Minamata disease, the Menda incident and leprosy (Hansen's disease). The contents of these collections are available on our website for researchers both inside and outside the University and for the general public.

URL: <http://archives.kumamoto-u.ac.jp/>

## Environmental Safety Center

環境安全センター



The Environmental Safety Center was established in 2001 to manage environment and safety issues at the university and its surroundings. The center aims to maintain a satisfactory setting for students studying at the university as well as ensure the safety of its staff and students, and in doing so, contribute to the overall promotion of education and research.

The main services of the center are : 1) Safety management and environmental conservation, including chemical management, for students studying at the university, as well as all related education and awareness services. 2) Services related to proper management and disposal of waste products. 3) Services related to environmental measurements such as water quality and atmospheric tests.

URL: <http://www.esc.kumamoto-u.ac.jp/en/>

## Research Center for Buried Cultural Properties

埋蔵文化財調査センター



Photo:  
Pottery pieces excavated from within campus grounds (from 1,600 years ago)

The eight campuses of Kumamoto University are built over some of the most famous historical sites in Kumamoto Prefecture, dating from thousands of years ago to modern times (at places like Kurokamimachi, Honjo, and Oe). As such, whenever digging must be performed as part of maintenance of college facilities (construction and repair of buildings and infrastructure), archaeological excavations are also performed to prevent damage to historical artifacts. In October 2011, the Center emerged as one of the Inter-Department Institutes for Education and Research from the Research Office for Buried Cultural Properties, which had been performing excavations since May 1994. The Center's objectives are the documentation, preservation, and practical use of the excavated cultural properties (archaeological features and relics). Excavation results are made public via annual and ad hoc reports, and visitors are always welcome to learn about what has been found in exhibition room.

URL: <https://www.kumamoto-u.ac.jp/organizations/maibun/en/>

## Health Care Center

保健センター



The Health Care Center is located on the Kurokami North Campus. Three physicians, two clinical psychotherapists, one campus social worker and three nurses are available during normal school hours for consultation and treatment. Health Care Center provides help in resolving the various troubles, concerns, worries, and illness that can occur during college life. The service is free to all members of the university community.

URL: <http://hcc.kumamoto-u.ac.jp/english/>

## Student Accessibility Support Room

障がい学生支援室

The Student Accessibility Support Room was established to enhance the support system for students with disabilities and to contribute to their unimpeded education in accordance with the enactment of the Act on the Elimination of Disability Discrimination of April 2016. The room facilitates consultations for students with disabilities and provides them with both reasonable accommodations and support adapted to individual needs. Also, regardless of disability or lack thereof, we also provide support for basic needs of student and daily life.

URL: <https://sien.kumamoto-u.ac.jp/en/>

## Institutional Research Office

大学情報分析室

The Institutional Research Office (IR) was established in July 2014 to provide information, assessments, and evaluations on university administration to support decision making.

The IR is run by faculty staff and officers. Currently, it consists of a vice president, four faculty staff, twenty-four management staff, and six URA members. A separate IR advisor provides overall advice on IR activities.

The main work of the IR is collecting, investigating, and analyzing university data. A database system named KU-RESAS that uses BI tools allows us to visualize data and make it available for analysis.

Data is obtained from Kumamoto University systems such as SOSEKI (education administration), ASO (GPA visualizations and education effectiveness), UPDS (employee and salary management), and COMET (entrance examination management). This data is categorized into education, research, social contributions, international relations, and administrative foundations. This data can also be combined for different purposes, e.g., finding relationships between education and research. Other university data, such as university ranking data, is also collected to measure and compare performance. This and other activities are how the IR contributes to university development.

## Campus Design Office

キャンパス整備戦略室



The Campus Design Office was established in November 2018 in order to plan university development with a long-term perspective that ensures the university's facilities operate effectively and efficiently. The office utilizes a top-down facility management system to manage the whole university. The Campus Design Office consists of three departments (Facility Management, Energy Management, and Environmental Management) so that it can respond flexibly to situational changes in the future. The Office Manager and Department Heads are appointed by professors of the Faculty of Engineering to encourage collaboration among faculty and administrative staff members.



Computer generated image of completed outdoor environment construction at Kumamoto University Hospital.

**University Hospital**

■ **Division of Internal Medicine**

Respiratory Medicine, Gastroenterology and Hepatology, Hematology, Rheumatology and Clinical Immunology, Nephrology and Hypertension, Diabetes, Metabolism and Endocrinology, Cardiovascular Medicine, Neurology, General Medicine

■ **Division of Surgery**

Cardiovascular Surgery, Thoracic Surgery, Gastroenterological Surgery, Breast and Endocrine Surgery, Pediatric Surgery, Transplantation, Urology, Gynecology

■ **Division of Child Health and Development**

Pediatrics, Obstetrics

■ **Division of Sensory and Motor Organs**

Orthopaedic Surgery, Dermatology, Plastic and Reconstructive Surgery, Ophthalmology, Otolaryngology-Head and Neck Surgery, Oral and Maxillofacial surgery

■ **Division of Radiology**

Diagnostic Imaging and Interventional Radiology, Radiation Oncology

■ **Division of Anesthesia, Neurosurgery and Psychiatry**

Neuropsychiatry, Neurosurgery, Anesthesia

■ **Departments**

Laboratory Medicine, Surgical Center, Central Radiology, Intensive Care Unit, Central Medical Supply, Rehabilitation, Surgical Pathology, Transfusion Medicine and Cell Therapy, Emergency Medicine, Infectious Diseases, Kidney Disease and Dialysis Center, Endoscopic Diagnostics and Therapeutics, Department of General Clinical Investigation, Department of Medical Informatics and Administrative Planning, Pharmacy, Nursing, Medical Technology, Department of Clinical Nutrition, Department of Medical Quality and Safety Management, Department of Infection Prevention and Control, Administration

■ **Centers**

Comprehensive Clinical Education, Training and Development Center, Innovation Center for Translational Research, Medical Liaison Center, Perinatal Medical Center, Cancer Center, Medical Engineering Center, Regional Medical Support Center, Transplantation Center, Disaster Medical Education and Research Center

In addition to central medical facilities, the hospital includes a Diagnosis and Treatment Department, Pharmacy, and Nursing Department, with a total of 845 beds on inpatient floors (795 General Ward beds and 50 Psychiatric Ward beds). The hospital provides medical care to an average of over 1,400 outpatients per day.

The relationship of the hospital to the university was changed from being a “medical school-affiliated hospital” to “university-affiliated hospital,” and the hospital name was changed from Kumamoto University School of Medicine Hospital to Kumamoto University Hospital on April 1, 2019. Now, plans to finish redeveloping the hospital into one that provides 21st century medicine and medical care have reached the final stages with the rebuilding of a series of wards, with outdoor environment construction such as parking lots and promenades is scheduled to be completed in 2021. This will create a comfortable and safe environment in which to provide high-quality medical and nursing care.

The hospital works to improve the standards of medical practice in Kumamoto Prefecture as both a prefecture-designated cancer treatment core hospital and liver disease treatment core hospital, and is the only advanced treatment hospital in Kumamoto Prefecture.

**Mission**

Through advanced medical safety management, Kumamoto University Hospital practices “patient first” medical care, is dedicated to medical development and educating medical professionals, and contributes to the health and welfare of its community.

**Vision**

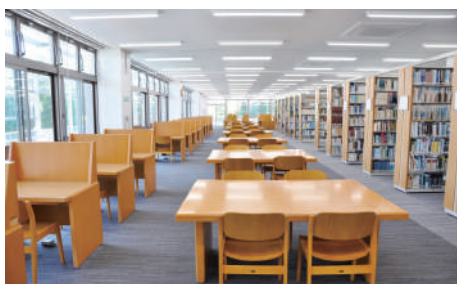
- ◆ We provide safe, reliable, and high-quality medical services thanks to our advanced medical safety management systems
- ◆ We are dedicated to excellence in patient care for respecting patient’s wishes, anticipations and requests
- ◆ We develop and promote advanced medical care and educate outstanding medical professionals
- ◆ We contribute to local community by acting as a base for medicine and disaster prevention

**Patient Rights**

- ◆ We respect your personal wishes and dignity.
- ◆ You have the right to fair, quality medical care.
- ◆ You have the right to receive adequate explanation and information.
- ◆ You may choose medical care according to your own wishes.
- ◆ Your privacy and personal information will be protected.

**Patient Responsibilities**

- ◆ Please give us an accurate description of your health condition.
- ◆ Please participate actively in medical treatment.
- ◆ Please follow social rules and our hospital’s regulations.
- ◆ Do not cause trouble for others.
- ◆ Please pay your medical fees on time.



The University Library is composed of the Central Library, the Medical Library and the Pharmacy Library. It provides information resources and services to support the University's educational and research activities. The Central Library is open from 8:40 a.m. to 10:00 p.m. from Monday to Friday, and 12:00 p.m. to 6:00 p.m. on Saturdays and Sundays. (except for the vacations)

**Library Holdings (As of March 31st, 2021)**

	Books	Periodicals
Central Library	1,041,185	15,065
Medical Library	172,907	5,365
Pharmacy Library	35,748	1,031
Total	1,249,840	21,461

**Special Collections of Books and Manuscripts**

**1. The Aso Manuscript Collection**

This impressive collection of historical documents, formerly kept at Aso Shrine, contains a wealth of information relating to the Nanbokucho and Kamakura Periods. Of the 1,047 items of this collection, 34 volumes of 304 letters and 36 manuscripts have been designated as Important Cultural Properties.

**2. The Hosokawa Manuscript Collection**

This is the largest collection of primary source materials on the administration of the Hosokawa government (Hosokawa Han), ranging from the Nanbokucho Period to the early Meiji Period.

URL: <https://www.lib.kumamoto-u.ac.jp/eng/howtouse>

Special Collections from the 17th century and Meiji period



Kumamoto University Library  
Official Mascot "KUMAPON"



The Technical Division was established on April 1st 2020 with the aim of strengthening the technical support for education and research at Kumamoto University.

Our department are consisting of the Joint Usage & Research Center Support Group and 4 units classified by type of expertise.

We are supports education and research by utilizing the technical skills and teamwork of staff.

# LOCAL AND OVERSEAS OFFICES

## Local Offices

### Kumamoto University Tokyo Office

東京オフィス

Established: April 2004

- Scope:
1. Provides support for university-industry collaborations
  2. Offers information regarding the educational research activities of KU to businesses, the government, and other public offices and organizations
  3. Offers information regarding entrance exams to prospective students, and provides support to KU students who are seeking jobs
  4. Collaborates with alumni associations
  5. Conducts seminars and organizes various gatherings



### Kumamoto University Kansai Liaison Office

関西リエゾンオフィス

Established: October 2009

- Scope:
1. Promotes collaboration with industry and government offices in the Kansai region, and promotes technology transfers
  2. Provides technical consultation, and conducts meetings and collaborative research gatherings
  3. Exhibits research processes and engages in public relations activities
  4. Distributes pamphlets and provides information about the entrance exams of KU, and assists students in finding jobs
  5. Collaborates with alumni associations
  6. Conducts seminars and other gatherings

Address: South Facility #2203, Creation Core Higashi Osaka 1-4-1 Aramoto Kita, Higashi Osaka City, Osaka 577-0011, Japan  
E-mail: sangaku-somu@jimu.kumamoto-u.ac.jp



## Overseas Offices

### Kumamoto University Liaison Office at KAIST

韓国KAISTオフィス

Established: September 2008

- Scope:
1. Promotes research collaboration
  2. Supports the joint symposiums of KU and KAIST
  3. Provides information about KU and its entrance exams, and assists with public relations activities various gatherings

Address: KAIST Biomedical Research Center 291 Daehak-ro (373-1 Guseong-dong), Yuseong-gu, Daejeon 305-701, Korea



### Kumamoto University Liaison Office at ITS

インドネシアITSオフィス

Established: April 2010

Established as the joint office of six national universities: April 2020  
(Chiba Univ., Niigata Univ., Kanazawa Univ., Okayama Univ., Nagasaki Univ. and Kumamoto Univ.)

- Scope:
1. Promotes academic and student exchanges with partner institutions
  2. Cultivates Indonesian students who are interested in studying at KU, and assists students who are preparing to come to KU to study
  3. Promotes international collaboration of the university, industry and government
  4. Provides information about KU and its entrance exams, and assists with public relations activities
  5. Supports alumni activities

Address: ITS International Office Gedung Rektorat Lantai 1 Kampus ITS Keputih-Sukolilo Surabaya Jawa Timur, 60111, Indonesia  
TEL: +62-31-596-6985



### Kumamoto University Dalian Office

大連オフィス

Established: April 2010

- Scope:
1. Provides information regarding Japan and KU to students and the faculty of Dalian University of Technology and partner institutions in northern China
  2. Builds networks of alumni and other relevant people in northern China
  3. Strengthens the relationship with other partner institutions in northern China
  4. Promotes KU's various activities in northern China

Address: Room 106, Bldg. B, No. 80 Software Park Rd, Dalian 116024, China  
TEL: +86-411-8470-2983



### Kumamoto University Sudan Office

スーダンオフィス

Established: June 2016

- Scope:
1. Service as a base of research and educational exchange in Africa
  2. The dissemination of information on Japan and Kumamoto University to students and academic staff of exchange partner universities in Africa
  3. The establishment of a network of alumni and similar groups and persons in Africa
  4. Service as a base of Kumamoto University's activities in Africa

Address: Faculty of Pharmacy, University of Khartoum. P.O. Box: 1996, AlQasr street, Khartoum 11111, Sudan



### Six National Universities Network (SUN) Changchun Joint Office

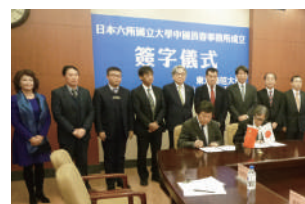
国立六大学長春共同事務所

As a first joint office of Six National Universities Network (SUN) which consists of Chiba University, Niigata University, Kanazawa University, Okayama University, Nagasaki University and Kumamoto University.

Established: November 2014

- Scope:
1. Provides information regarding Japan and SUN to students and the faculty of partner institutions in northeastern China
  2. Builds networks of alumni and other relevant people in northeastern China
  3. Strengthens the relationship with other partner institutions in northeastern China
  4. Promotes SUN's various activities in northeastern China

Address: Jingyue Campus of Northeast Normal University, Changchun, Jilin, China  
TEL: +8615543288200



### Six National Universities Network (SUN) European Platform of SixERS

国立六大学欧州事務所

Established as a joint office of six national universities

(Chiba Univ., Niigata Univ., Kanazawa Univ., Okayama Univ., Nagasaki Univ. and Kumamoto Univ.)

Established: August 2016

- Scope:
1. The dissemination of information on academic and cultural ties between Japan and the Netherlands
  2. The promotion of partnerships with interuniversity networks and international joint educational platforms in the Netherlands and EU
  3. The collection of information on local universities
  4. The dissemination of information on Japan and the six national universities to students and academic staff of local universities
  5. The implementation and operation of six national university joint programs

Address: SieboldHuis 5th floor, Rapenburg 19, 2311 GE Leiden, The Netherlands



### Six National Universities Network (SUN) Bangkok Office of AP-SixERS

国立六大学バンコク事務所

Established as the joint office of six national universities

(Chiba Univ., Niigata Univ., Kanazawa Univ., Okayama Univ., Nagasaki Univ. and Kumamoto Univ. )

Established: July 2017

- Scope:
1. The dissemination of information on academic and cultural ties between Japan Joint implementation of student exchange programs in Thailand and other
  2. ASEAN countries Dissemination of information on Japan and the six universities to students and academic staff in Thailand and other ASEAN countries
  3. Promotion of international industryacademiagovernment collaborative programs in Thailand and other ASEAN countries
  4. Promotion of exchanges with ASEAN University Network (AUN) member universities

Address: KMUTT Knowledge Exchange for Innovation Center (KX) 12F  
110/1 Krung Thonburi Road, Banglamphulang,  
Khlongsan, Bangkok 10600, Thailand



### Kumamoto University Liaison Office at STUST

台湾南台オフィス

Established: March 2019

- Scope:
1. Promotes academic and student exchanges with partner institutions in Taiwan
  2. Promotes international collaboration with partner intuitions in Taiwan
  3. Provides information on Japan and KU to academic and students in Taiwan
  4. Strengthens networks of alumni and relevant affiliates in Taiwan
  5. Supports other international engagements of KU in Taiwan

Address: Southern Taiwan University of Science and Technology (STUST) Office of International Affairs (W804), No. 1, NanTai Street, Yongkang Dist., Tainan City 71005, Taiwan R.O.C



### Kumamoto University Liaison Office in Tanzania

タンザニアオフィス

Established: October 2020

- Scope:
1. Service as a base of joint research in Tanzania and Sub-Saharan Africa
  2. Promotes Faculty, staff and student exchange programs in Tanzania and Sub-Saharan Africa
  3. Builds networks of alumni and relevant people in Tanzania and Sub-Saharan Africa

Address: Office of Research and Publications, Muhimbili University of Health and Allied Sciences, 9 United Nations road, Upanga, Dar es Salaam, Tanzania



# KUMAMOTO UNIVERSITY HISTORICAL ARCHITECTURE

The main building of the former Fifth High School, now the Memorial Museum, is the symbol of Kumamoto University. The building has been designated as a National Important Cultural Property, along with the Chemical Laboratory, the Front Gate, and the Museum of the Engineering Faculty. We also preserve the tangible cultural properties of the Yamazaki Memorial Hall on the Honjo campus and the Kumayaku Museum on the Oe campus. We are planning to create the "Kumamoto University Museum," which will consist of these buildings and artifacts. As the first step in this process, the university initiated the renewal of the Memorial Museum of the Fifth High School in 2006, and is now gathering historical documents and materials.

## The Memorial Museum of the Fifth High School

五高記念館

(National Important Cultural Property)



The Fifth High school was established for young boys as the most prominent educational institution in Kyushu in 1887. Jigoro Kano, Yakumo Koizumi (Lafcadio Hearn) as well as Soseki Natsume were among the more celebrated professors who taught here. Even after 130 years, the original Fifth High School building is still well-maintained and very much appreciated by the public.

<http://www.goko.kumamoto-u.ac.jp/en/>

※ The Museum is currently closed due to damage sustained in the Kumamoto Earthquakes of 2016.

## The Front Gate (The Red Gate)

正門 (赤門)

(National Important Cultural Property)



The front gate of the Fifth High School is popularly known as the Red Gate (AKAMON) and is still the dignified main gate of the north campus of Kumamoto University.

## The Chemical Laboratory of the Fifth High School

化学実験場

(National Important Cultural Property)



This building was used as the lab for chemical experiments. There is a row of labs as well as a tiered lecture hall with a corridor situated on the west side.

※ It is currently closed due to damage sustained in the Kumamoto Earthquakes of 2016.

## The Museum of the Engineering Faculty

工学部研究資料館

(National Important Cultural Property)



This building was constructed in 1908 as a machine shop for students of the former Kumamoto Junior College of Technology. The exhibits include various machines and tools still in working condition. The public is welcome to visit the museum during Open Campus Days, and the University Festival.

※ The Museum is currently closed due to damage sustained in the Kumamoto Earthquakes of 2016.



Since being selected for the “Program for Promoting the Enhancement of Research Universities” by the Ministry of Education, Culture, Sports, Science and Technology (MEXT) in 2013, we have established international collaborative research groups for life sciences, natural sciences, and humanities and social sciences to globalize and strengthen our research activities. Under the management of top professors in each research group, we invite researchers from abroad, recruit talented young researchers, regularly hold international seminars, establish overseas joint laboratories, and do much more.

## Institutions Collaborating with Kumamoto University (2012-2021)

Kumamoto University is currently working with 3,001 international institutions and we actively promote new collaborations to deliver quality research.



### Top 10 Institutional Collaborations by Number of Publications

Rank	Name	Number of Publications	Country
1	National Institutes of Health (NIH) - USA	176	USA
2	Centre National de la Recherche Scientifique (CNRS)	133	FRANCE
3	Harvard University	126	USA
4	NIH National Cancer Institute (NCI)	113	USA
5	University of California System	109	USA
6	University of Texas System	77	USA
7	University of Southern California	76	USA
7	Institut National de la Sante et de la Recherche Medicale (Inserm)	76	FRANCE
8	University of Sydney	74	AUSTRALIA
9	National University of Singapore	73	SINGAPORE

Clarivate Analytics InCites BA

# TOP GLOBAL UNIVERSITY PROJECT

[Name of Project] **A Leading University Cultivating Global Leaders from Kumamoto**

[Future Vision of the University Planned in TGU Project]

**Kumamoto University is open, compatible, and mobile**

Introducing an internationally standardized education system offering compatibility and mobility

**Kumamoto University is a regional globalization**

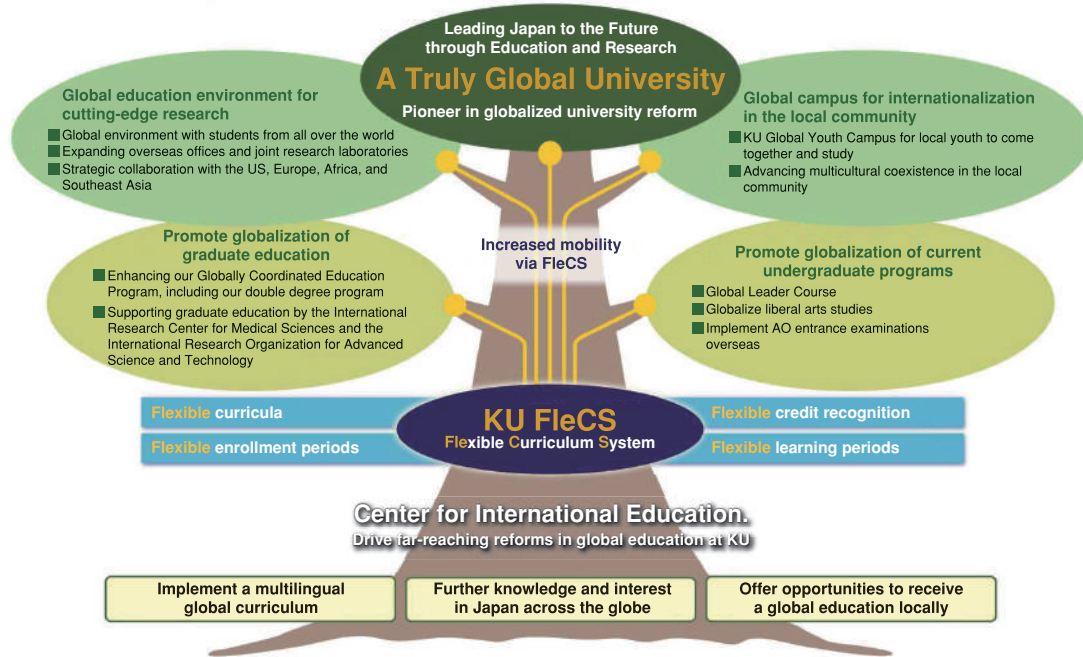
Promoting regional human resources, supplying innovative talent who can help advance a technology-oriented nation

**Kumamoto University continually improves, researches, and develops**

Enriching an advanced education system and research activities

[Summary of Project] Through this project, we aim to become a truly global university by implementing various educational reforms. To that end, we will contribute to the globalization of the local community as a globally competitive research hub with the following 4 targets:

- ① An education system highly conducive to internationalism
- ② Global atmosphere for the inclusion of international students
- ③ Strengthened and globalized graduate education to support cutting-edge research
- ④ Global campus as a driving force for internationalization in the local community



## Goals To Be Achieved By 2023

**1,600** | international students

Increase the number of international students to 1,600 (approximately 16% of the entire student body)

**1,200** | students who have studied abroad

Increase the number of students who have studied abroad to 1,200 (approximately 14% of the Japanese student population)

**50%** | liberal arts education subjects delivered in English

Increase the percentage of liberal arts education subjects delivered in English to 50%

**1,040** | subjects available in foreign languages

Increase the number of subjects available in foreign languages to 1,040 (approximately 20% of the total number)

**90** | courses available in a foreign language

Increase the number of courses that can be completed in a foreign language to 90 (approximately 50% of the total number)

**1,150** | students who satisfy the foreign language ability standard

Increase the number of students who satisfy the foreign language ability standard to 1,150 (approximately 12% of the entire student body)

**700** | participants in the KU Global Youth Campus Program

Increase the number of participants in the KU Global Youth Campus Program to 700

※ minimum TOEFL® iBT: 80 (TOEFL® PBT: 550); minimum IELTS: 6

**770** | foreign-national faculty members and others

Increase the number of faculty who are of foreign nationality, hold degrees from foreign universities or have research experience over one year in foreign countries to 770 (approximately 73% of the total number of full-time teaching faculty)

**20** | Globally Coordinated Education Programs

Increase the number of Globally Coordinated Education Programs available through our Globally Coordinated Education Program to 20

## Current Details

## 44 Global Leader Course

### Number of students enrolled in the Global Leader Course (2021 academic year)

To promote the globalization of undergraduate education, a Global Leader Course has been established in four existing academic divisions (Faculty of Letters, Law, Sciences, and Engineering). The Course began in April 2017 and 44 participants are registered for the 2021 academic year. The Course centers on material from the "GOKOH School Program," which inherited the traditions and spirit of The Fifth High School (located on the grounds of Kumamoto University before its founding). The Course endows global leaders with experience and a broad, multicultural, world-embracing mindset that equips them to thrive in the 21st-century global society.



## 1,085 Expansion of global education

### Number of students enrolled in liberal arts courses taught in English (2020 academic year)

A "Multidisciplinary Studies" department was newly established in 2017 to provide liberal arts courses in English for all international and Japanese students. Focusing on liberal arts education with an international basis, and taught mainly by foreign lecturers, classes were offered in English on 30 themes in 10 subject areas in 2020. A total of 1,085 students enrolled.



## 246 Broad expansion of the Kumamoto University Global Youth Campus Program

### Number of participants in the Kumamoto University Global Youth Campus Program (2020 academic year)

For regional high school, technical college and other students, programs and events designed to spark an interest in global education before university enrollment are being developed. These provide opportunities for global education and deepen the students' understanding of and interest in global interaction. Besides activities held at the University such as "Meet & Greet Study-Aboard Students" (high school students interact with University students who studied abroad), foreign teaching staff and international students are also sent outside the University to interact with SSH (Super Science High school), local high school and technical college students through various activities, in 2020, 246 students participated in these programs.



## 21 Establishment of the College of Cross-Cultural and Multidisciplinary Studies and various global exchange activities

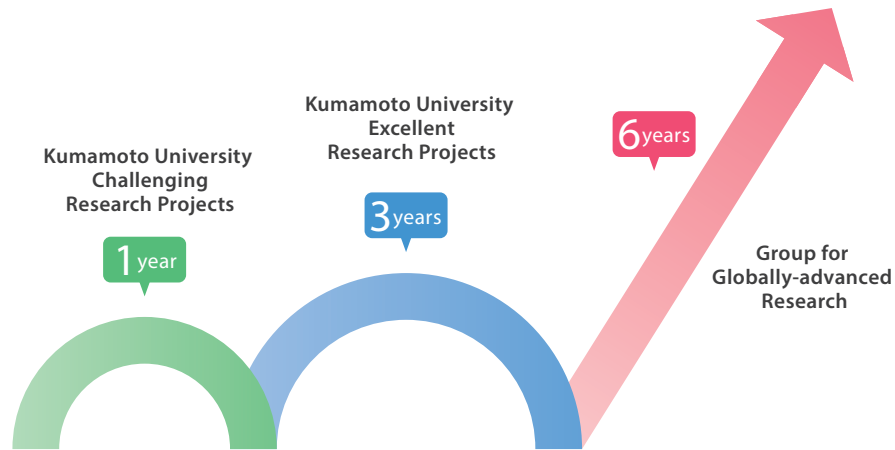
### Total number of participants in activities organized by the College of Cross-Cultural and Multidisciplinary Studies (2020 academic year)

In March 2015, the College of Cross-Cultural and Multidisciplinary Studies (CCMS) was established and charged with driving the globalization of education at Kumamoto University to encourage students to study abroad, a class to strengthen English skills (IELTS) is offered with 21 students enrolled for the 2020 term. The College also contributes to multicultural coexistence within the regional community.



# INITIATIVES TO DEVELOP PROMINENT RESEARCH

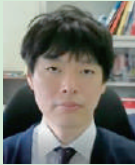
Kumamoto University continues to pioneer distinguished and high level research as a regional and seminal institute that strives to act as a hub for developing international research. Thus far, Kumamoto University has officially authorized 4 vital domains as cutting-edge international research and provided 6 years of focused support accordingly. Additionally, it has initiated the “Kumamoto University Excellent Research Projects” (3 years) to support research fields that will prove invaluable to future generations, as well as supporting the bold and highly ambitious “Kumamoto University Challenging Research Projects” (1 year), since fiscal year 2017.




## ■ Kumamoto University Challenging Research Projects ■ めばえ研究推進事業

Bold research projects with the potential for revolutionizing established concepts and changing the direction of academia fall within the framework of Kumamoto University Challenging Research Projects. These programs aim to revitalize research that may represent the future of Kumamoto University and are funded for one year.


### Natural Sciences




**IoT/AI oriented system design technology**  
**AMAGASAKI Motoki**  
 Faculty of Advanced Science and Technology




**Novel roles of RNAs covering mitotic chromosomes**  
**IDEUE Takashi**  
 Faculty of Advanced Science and Technology



**Recognition of Molecular Asymmetry Using Chiral Metal Oxides**  
**INOMATA Yusuke**  
 Faculty of Advanced Science and Technology




**Detection of cancer cells by autonomous strand exchange reaction of nucleic acids**  
**KITAMURA Yusuke**  
 Faculty of Advanced Science and Technology




**Challenge for sound wave velocity measurements of liquid Fe alloys under Earth's core pressure**  
**NAKAJIMA Yoichi**  
 Priority Organization for Innovation and Excellence

### Life Sciences



**Identification of M-cell transcytosis-mediated factors for the development of mucosal vaccines**  
**KISHIMOTO Naoki**  
 Global Center for Natural Resources Sciences



**Development of new technology for visualizing inflammatory memory cells in vivo**  
**KOGA Tomoaki**  
 Institute of Molecular Embryology and Genetics



**Development of biomarkers for gender dysphoria based on the fluctuation of establishment of sex-specific epigenetic signature hypothesis**  
**NAKACHI Yutaka**  
 Faculty of Life Sciences



**Crystallographic analysis of enzymatic reactions involved in genome maintenance**  
**NAKAMURA Teruya**  
 Priority Organization for Innovation and Excellence



**Innovative drug discovery for lymphedema by targeting independent network of vascular system and lymphatic system**  
**BABA Masaya**  
 International Research Center for Medical Sciences(IRCMS)



**Restoring neuronal circuits in brain disorders using activity induction**  
**MIZUNO Hidenobu**  
 International Research Center for Medical Sciences(IRCMS)



**Maintenance of hematopoietic stem cells in stress hematopoiesis**  
**MORII Mariko**  
 International Research Center for Medical Sciences(IRCMS)

## ■ Kumamoto University Excellent Research Projects ■ みらい研究推進事業

The Kumamoto University Excellent Research Project aims to develop world-leading research areas that represent the potential of Kumamoto University. It focuses on nurturing researchers who are already highly successful in their respective fields so that they may pass their knowledge on to future generations. Only the most highly evaluated projects are approved for the three-year funding support.

### Eisei-Bunko Research Center



**Core of excellence for Japan modern history through the comprehensive analysis of the document group of Kumamoto domain relations**  
**INABA Tsuguharu**  
 Eisei-Bunko Research Center

### Natural Sciences



**Development of Two-Dimensional Functional Materials**  
**HAYAMI Shinya**  
 Faculty of Advanced Science and Technology

### Life Sciences



**Novel Mechanisms of Aging by Mitochondrial Homeostasis**  
**OIKE Yuichi**  
 Faculty of Life Sciences



**Identification and formulation of innovative drug seeds based on 'Kumada'i' library**  
**SUGIMOTO Yukihiko**  
 Faculty of Life Sciences



**Clarification of the molecular mechanism for metabolic reprogramming of diseases and establishment of new treatment strategy**  
**BABA Hideo**  
 Faculty of Life Sciences



**Pathogenesis of HTLV-1 associated diseases and development of new therapies**  
**MATSUOKA Masao**  
 Faculty of Life Science

## ■ Group for Globally-advanced Research ■ 国際先端研究拠点

**KATSUKI Sunao,**  
Institute of Industrial  
Nanomaterials



### Pulsed Power Science and Application

Pulsed power is an instantaneous form of energy, whether electrical energy, chemical energy, mechanical energy, or optical energy, that can exert a tremendous amount of power. The magnitude of pulsed power can be equivalent to the total of all electrical power consumption at an instant in Kyushu, in Japan, or even in the world. Pulsed power is capable of generating unusually extreme fields, such as ultra-high-pressure fields, ultra-high electromagnetic fields, super-gravity fields and a variety of plasmas. This group furthers studies of pulsed-power produced in extremely reactive fields, and explores applications in material processing, environmental protection, biotechnology, medical treatment, food processing, and more, as well as further developing pulsed power technology. Our facilities and equipment are among the most advanced in the world, and include a comprehensive explosion experiment facility,

the world's first super-gravity generation device, a comprehensive bioelectrics experiment facility, and pulsed power infrastructure equipment of great variety in terms of time range (down to sub-nanoseconds) and power range (up to 10 GW). The facilities and equipment are used not only for our own research but also for researchers from disparate fields associated with both companies and other universities, and, as such, are widely deployed in the related fields of pulsed power science and technology. We are seeking solutions to various problems that the international community is facing, and working to contribute to the realization of a safe and secure society by using pulsed power science and technology. Furthermore, we seek to encourage young researchers to be international leaders by providing them with international and interdisciplinary research environments.

**NISHINAKAMURA Ryuichi,**  
Institute of Molecular  
Embryology and Genetics



### Stem-Cell Based Tissue Regeneration Research and Education Unit

This group was established by Kumamoto University in 2013 to continuously promote the scientific activities of the Global COE Program, which was funded by the Ministry of Education, Culture, Sports, Science and Technology from 2007 to 2011. We aim to establish an education and research unit that will foster creative researchers who focus on stem-cell based developmental medicine. Stem cell research is one of the most attractive fields in biomedical science. The expectations for regenerative medicine are rising, since the derivation of human iPS cells opened the door to the regeneration of organs and tissues. To achieve this goal, however, a deeper understanding of broad areas of science, including developmental biology, is crucial. We have recruited leading researchers with various backgrounds, including those from the fields of medicine, pharmacology, and developmental biology. Our research

topics include molecular mechanisms of stem cell maintenance, lineage specification of early-stage embryos, establishment of iPS cells from patients, development and regeneration of the pancreas, kidneys, eyes, and neurons, as well as epigenetics and metabolisms in diseased states. We expect that these research activities will synergistically contribute to a better understanding of organogenesis and to strategies in disease treatment. We have seen seminal achievements during the past several years. They include the induction of three-dimensional kidney tissue from human iPS cells, the derivation of insulin-producing pancreatic cells from ES/iPS cells, a method of eliminating undifferentiated cells during tissue differentiation, a drug development using patient-derived iPS cells, and epigenetic control of energy expenditures and cancers. This group also seeks to encourage young scientists in research fields related to stem cell and organogenesis studies. We support these young scientists by providing in-house grants, travel expenses, and many other benefits. We hope that young researchers trained in this program will work together to build a global next-generation network in developmental medicine. We are confident that this environment will help young postdocs and students become globally oriented independent scientists.

**UENO Takamasa,**  
Joint Research Center for  
Human Retrovirus Infection



### International Research Center Aiming at the Control of AIDS

Over 35 million people are still living with HIV-1 infection, and nearly two million people die of AIDS-related illnesses each year in the world. In addition, among developed countries, our country has been experiencing increased incidences of HIV-1 infection. Thus, HIV/AIDS remains a substantial threat to the global health, and developing an HIV vaccine and therapies to cure HIV/AIDS have still been a global challenge. New program "International Research Center Aiming at the control of AIDS" intends to enhance and expand international research and education core based on the framework of the successfully implemented global COE "Global Education and Research Center Aiming at the Control of AIDS" Program over the five years. To do this, we reorganize our mission to make a substantial effort to research studies leading to the development of (1) new therapies to cure HIV/AIDS and (2) an HIV/AIDS vaccine.

Also, in collaboration with the newly reformed Educational Program for Advanced Research in Infectious Diseases and AIDS, this program intends to enhance capacity-building opportunities, and thereby junior-level scientists and graduate students can be self-standing and globally visible. Collectively, we will contribute to constructing a distinguishable platform that fosters leading-edge research and education in HIV/AIDS field through our expanding inter-continental academic/education partnerships.

**KAWAMURA Yoshihito,**  
Magnesium Research Center



### International Research Core for Advanced Magnesium Alloys

Currently there is a high demand in the transportation industry for light-weighting the structural components, in order to reduce both energy consumption and CO<sub>2</sub> emissions. Magnesium is the lightest structural metal and Mg alloys are now used in a wide range of applications for structural, functional, and biomedical benefits. The Magnesium Research Center (MRC) at Kumamoto University, established in December 2011, has been engaged in and dedicated to a variety of Mg-related research areas. They include alloy and process design, physical metallurgy fundamentals, mechanical metallurgy, corrosion, surface treatment, and recycling. MRC has developed *KUMADAI* Mg alloys - a new generation of Mg alloys that have an excellent balance of mechanical performance,

non-flammability, and corrosion resistance. MRC has three key goals: 1) to provide state-of-the-art research and education, 2) to help the maturation and insertion of *KUMADAI* Mg alloys into actual applications, and 3) to establish a global research network to significantly enhance collaboration with universities, research institutes, and industries.

# INTERNATIONAL EXCHANGE AGREEMENTS

Kumamoto University has formed cooperative relationships with foreign academic institutions by concluding academic exchange agreements. As of September 1, 2021 we have 279 partner institutions in 53 countries and regions.

## 1 chart **LISTS OF UNIVERSITY-LEVEL EXCHANGE AGREEMENTS**

133 partner institutions (41 countries and regions)

(As of September 1, 2021)

Country	University/ Institute	Since
Australia	The University of Newcastle	1986
Australia	Queensland University of Technology	2014
Australia	University of Technology Sydney	2017
Azerbaijan	Baku State University	2019
Bangladesh	University of Dhaka	2000
Burkina Faso	University Ouaga I Professor Joseph KI-ZERBO	2016
Cambodia	Royal University of Phnom Penh	2016
Canada	University of Alberta	2001
Canada	McGill University	2016
Czech	University of Bohemia	2019
China	Guangxi Normal University	2005
China	Tongji University	2005
China	Dalian University of Technology	2006
China	Nanchang University	2006
China	Shanghai Normal University	2008
China	Harbin Institute of Technology	2009
China	Jilin University	2009
China	Nankai University	2009
China	Shandong University	2009
China	Sichuan University	2009
China	Northeastern University	2010
China	Beijing University of Technology	2011
China	Shenzhen University	2011
China	The University of Macau	2011
China	East China University of Political Science and Law	2011
China	Jilin Institute of Chemical Technology	2013
China	Northeast Normal University	2014
China	Chongqing University	2014
China	NanJing Normal University	2015
China	Guilin University of Technology	2015
China	Anhui University	2015
China	Wuhan University of Technology	2016
China	Guangxi Medical University	2018
China	Fuzhou University Zhicheng College	2019
China	Beijing Institute of Technology	2019
Congo	University of Mbuji-Mayi	2015
Djibouti	Djibouti University	2013
Egypt	Suez Canal University	2006
Egypt	Fayoum University	2008
Egypt	Ain Shams University	2019
France	Bordeaux Institute of Technology	2006
France	University of Bordeaux	2007
France	Aix-Marseille University	2016
France	University Bordeaux MONTAIGNE	2017
Germany	Saarland University	2001
Germany	Heinrich Heine University Düsseldorf	2017
Germany	Hochschule für Technik und Wirtschaft Berlin	2018
Germany	RWTH Aachen University	2020
Hungary	Pázmány Péter Catholic University	2015
India	Indian Institute of Technology Bombay	2018
Indonesia	The Consortium of Institut Teknologi Sepuluh Nopember, Indonesia (Institut Teknologi Sepuluh Nopember, Universitas Sam Ratulangi, Universitas Mataram, Universitas Cenderawasih, Universitas Nusa Cendana)	2008
Indonesia	Institut Teknologi Bandung	2011
Indonesia	Gadjah Mada University	2013
Indonesia	Airlangga University	2013
Indonesia	Udayana University	2015
Indonesia	University of Indonesia	2016
Indonesia	University of Brawijaya	2016
Indonesia	State Islamic University of Sunan Ampel Surabaya	2018
Ireland	Waterford Institute of Technology	2018
Italy	University of Padova	2018
Korea	Pai Chai University	1999
Korea	Dong-A University	2005
Korea	Korea Advanced Institute of Science and Technology	2006

Country	University/ Institute	Since
Korea	Chosun University	2009
Korea	Pukyong National University	2011
Korea	University of Seoul	2011
Korea	Ajou University	2011
Korea	Chungbuk National University	2012
Korea	Pusan National University	2012
Korea	Chonbuk National University	2012
Korea	Hannam University	2016
Laos	National University of Laos	2011
Latvia	Riga Technical University	2018
Malaysia	University Sains Malaysia	2012
Malaysia	Universiti Putra Malaysia	2018
Mexico	Autonomous University of Nuevo León	2017
Mongol	Mongolian University of Life Sciences	2018
Myanmar	Yangon Technological University	2015
Myanmar	Patheingyi University	2016
Nepal	Pokhara University	2010
New Zealand	Massey University	1996
Philippines	University of the Philippines, Diliman	2002
Philippines	University of the Philippines Los Baños	2015
Philippines	Ateneo de Manila University	2016
Poland	University of Warsaw	2009
Poland	Lublin University of Technology	2015
Romania	University of Bucharest	2015
Russia	Kazan Federal University	2021
Rwanda	University of Rwanda	2014
Slovenia	University of Maribor	2016
Spain	University of Valencia	2014
Spain	University of Santiago de Compostela	2018
Spain	Valladolid University	2018
Sudan	University of Khartoum	2020
Taiwan	Southern Taiwan University of Science and Technology	2008
Taiwan	National Tsing Hua University	2015
Taiwan	National University of Kaohsiung	2016
Taiwan	Chang Jung Christian University	2016
Taiwan	Fisheries Research Institute, Council of Agriculture	2020
Tanzania	Muhimbili University of Health and Allied Sciences	2015
Thailand	Kasetsart University	1994
Thailand	Khon Kaen University	2004
Thailand	Mahidol University	2013
Thailand	Burapha University	2017
Thailand	Chiang Mai University	2018
Thailand	Chulalongkorn University	2019
Thailand	Mae Fah Luang University	2020
Turkey	Ege University	2000
Turkey	Canakkale Onsekiz Mart University	2015
UK	Durham University	1993
UK	University of Birmingham	1993
UK	University of Leeds	2006
USA	The University of Montana	1987
USA	Montana State University	1987
USA	Virginia Commonwealth University	1989
USA	University of North Carolina at Charlotte	1990
USA	Texas Tech University	1994
USA	The University of Texas at San Antonio	2010
USA	University of Massachusetts Boston	2016
USA	The University of Georgia	2017
USA	Wright State University	2017
USA	University of Alaska Anchorage	2018
Vietnam	VNU University of science	2007
Vietnam	Ho Chi Minh City University of Technology	2010
Vietnam	Hue University	2010
Vietnam	National University of Civil Engineering	2010
Vietnam	University of Social Sciences and Humanities, Vietnam National University, Hanoi	2016
Vietnam	University of Languages and International Studies, VNU	2016
Vietnam	Foreign Trade University	2016

# INTERNATIONAL EXCHANGE AGREEMENTS

## chart 2 **LISTS OF DEPARTMENT-LEVEL EXCHANGE AGREEMENTS**

146 partner institutions (41 countries and regions)

(As of September 1, 2021)

Country	University / Institute	Counterpart	Since
Australia	Division of Materials Engineering, The University of Queensland	Magnesium Research Center	2013
Australia	Australian Phenomics Facility, The Australian National University	Institute of Resource Development and Analysis	2014
Australia	Faculty of Engineering, Architecture and Information Technology (EAIT), The University of Queensland	Institution of Industrial Nanomaterials	2018
Australia	The Commonwealth Scientific and Industrial Research Organisation	Faculty of Advanced Science and Technology, International Research Organization for Advanced Science and Technology	2019
Austria	Faculty of Philological and Cultural Studies, University of Vienna	Kumamoto Innovative Development Organization	2016
Bangladesh	Faculty of Engineering and Technology, Faculty of Science, Noakhali Science And Technology University	Faculty of Advanced Science and Technology, Graduate School of Science and Technology	2018
Brazil	Technological Institute of Aeronautics	Faculty of Engineering, Graduate School of Science and Technology, Faculty of Advanced Science and Technology	2017
Cambodia	University of Health Sciences, Cambodia	School of Pharmacy, Graduate School of Pharmaceutical Sciences	2016
Canada	Queen's University at Kingston	Faculty of Engineering, Graduate School of Science and Technology, Faculty of Advanced Science and Technology	2014
Canada	University of Calgary, Schulich School of Engineering	Graduate School of Science and Technology, Faculty of Advanced Science and Technology	2016
China	Chinese Academy of Medical Sciences	School of Medicine	1983
China	Harbin Medical University	School of Medicine, Faculty of Life Sciences, Graduate School of Medical Sciences, Graduate School of Pharmaceutical Sciences	1999
China	College of Civil Engineering & Architecture, School of Chemistry & Chemical Engineering, Guangxi University	Faculty of Engineering, Graduate School of Science and Technology, Faculty of Advanced Science and Technology	2007
China	College of Engineering, Peking University	Faculty of Engineering, Graduate School of Science and Technology, Faculty of Advanced Science and Technology	2008
China	Wenzhou Medical University	Faculty of Life Sciences	2008
China	School of Foreign Languages, Hangzhou Normal University	Faculty of Letters, Graduate School of Social and Cultural Sciences	2010
China	Civil Engineering College, Municipal and Environmental Engineering College, Transportation Engineering College, Graduate School, Shenyang Jianzhu University	Faculty of Engineering, Graduate School of Science and Technology, Faculty of Advanced Science and Technology	2010
China	School of Medicine, Zhejiang University	School of Medicine, Faculty of Life Sciences, Graduate School of Medical Sciences	2010
China	National Institutes for Food and Drug Control	Institute of Resource Development and Analysis	2012
China	Center for Public Policy and Governance, Shanghai Jiao Tong University	Kumamoto Innovative Development Organization	2013
China	School of Tourism and City Administration, Zhejiang Gongshang University	Faculty of Engineering, Graduate School of Science and Technology, Faculty of Advanced Science and Technology	2015
China	Key Laboratory of Chemistry of Northwestern Plant Resources, Chinese Academy of Sciences (CAS), Lanzhou Institute of Chemical Physics (LICP)	Graduate School of Science and Technology, Faculty of Advanced Science and Technology	2018
China	School of Medicine, Department of Laboratory Animal Sciences, Shanghai Jiao Tong University	Institute of Resource Development and Analysis	2018
China	Xi'AN University of Technology, Graduate School and Faculty of Mechanical and Precision Instrument Engineering	Faculty of Advanced Science and Technology, Faculty of Engineering, and Graduate School of Science and Technology	2020
China	Nanning Health School	Faculty of Life Sciences	2020
Congo	School of Pharmaceutical Sciences, University of Kinshasa	School of Pharmacy, Graduate School of Pharmaceutical Sciences, Faculty of Life Sciences	2019
Czech	Technical University of Ostrava and Institute of Geonics of the Academy of Sciences of the Czech Republic	Faculty of Engineering, Graduate School of Science and Technology, Faculty of Advanced Science and Technology	2009
Czech	University of Chemistry and Technology, Prague	Graduate School of Science and Technology	2010
Czech	University of Pardubice	Faculty of Science, Faculty of Engineering, Graduate School of Science and Technology, Faculty of Advanced Science and Technology	2015
Czech	Institute of Physics, Academy of Sciences of Czech Republic	Faculty of Engineering, Graduate School of Science and Technology, Faculty of Advanced Science and Technology	2015
Czech	Faculty of Mathematics and Physics, Charles University	Magnesium Research Center	2018
Czech	Faculty of Mathematics and Physics, Charles University	Graduate School of Science and Technology, Faculty of Advanced Science and Technology	2019
Denmark	Faculty of Humanities, University of Copenhagen	Faculty of Humanities and Social Sciences, Faculty of Letters, Center for International Education	2018
Egypt	Faculty of Pharmaceutical Sciences and Pharmaceutical Industries, Future University in Egypt	School of Pharmacy, Graduate School of Pharmaceutical Sciences, Faculty of Life Sciences	2019
France	University of Clermont Auvergne	Faculty of Science, Faculty of Engineering, Graduate School of Science and Technology, Faculty of Advanced Science and Technology	2010
France	University Joseph Fourier - Grenoble I	Faculty of Engineering, Graduate School of Science and Technology, Faculty of Advanced Science and Technology	2011
France	École nationale supérieure des mines de Saint-Étienne	Faculty of Science, Faculty of Engineering, Graduate School of Science and Technology, Faculty of Advanced Science and Technology	2012
France	CRM2 Laboratory, University of Lorraine	Faculty of Science, Graduate School of Science and Technology, Faculty of Advanced Science and Technology	2014
France	Institut Pasteur	Institute of Resource Development and Analysis	2015
France	Faculty of Sciences and Engineering, Toulouse III Paul Sabatier	Faculty of Engineering, Graduate School of Science and Technology, Faculty of Advanced Science and Technology, Faculty of Science	2018
Germany	Faculty of Arts, University of Bonn	Faculty of Letters	1997
Germany	Leibniz Institute for Applied Geophysics	Graduate School of Science and Technology, Faculty of Advanced Science and Technology	2013
Germany	Department of Civil and Environmental Engineering, Ruhr-University Bochum	Faculty of Engineering, Graduate School of Science and Technology, Faculty of Advanced Science and Technology	2014
Germany	Faculty of Georesources and Materials Engineering, Institute of Physical Metallurgy and Metal Physics, RWTH Aachen University	Faculty of Engineering, Graduate School of Science and Technology, Faculty of Advanced Science and Technology	2015
Germany	Institute of Physics of Faculty of Mathematics and Natural Sciences, University of Rostock	Faculty of Science, Graduate School of Science and Technology, Faculty of Advanced Science and Technology	2017
Germany	Faculty for Chemistry and Pharmacy, Würzburg University	Faculty of Engineering, Graduate School of Science and Technology, Faculty of Advanced Science and Technology	2018
Germany	Department of Chemistry, Philipps-University Marburg	Faculty of Science, Graduate School of Science and Technology, Faculty of Advanced Science and Technology	2018
Germany	TU Bergakademie Freiberg, Faculty of Mechanical, Process and Energy Engineering	Faculty of Engineering, Graduate School of Science and Technology, Faculty of Advanced Science and Technology	2018
Germany	Faculty of Science, Eberhard Karls University of Tübingen	Faculty of Engineering, Graduate School of Science and Technology, Faculty of Advanced Science and Technology	2019



Country	University / Institute	Counterpart	Since
Germany	Karlsruhe Institute of Technology	Faculty of Engineering, Graduate School of Science and Technology, Faculty of Advanced Science and Technology	2019
Germany	RWTH Aachen University, Faculty of Civil Engineering	Faculty of Engineering, Graduate School of Science and Technology	2021
Hungary	Eötvös Loránd University, Bárczi Gusztáv Faculty of Special Needs Education	Faculty of Education	2020
India	Faculty of Engineering & Technology, Annamalai University	Faculty of Engineering, Graduate School of Science and Technology, Faculty of Advanced Science and Technology, Institution of Industrial Nanomaterials	2006
India	Manipal University	Faculty of Engineering, Graduate School of Science and Technology, Faculty of Advanced Science and Technology	2009
India	National Institute of Technology Karnataka	Faculty of Engineering, Graduate School of Science and Technology, Faculty of Advanced Science and Technology	2009
India	Alva's Institute of Engineering & Technology	Faculty of Engineering, Graduate School of Science and Technology, Faculty of Advanced Science and Technology	2017
India	Indian Institute of Science Department of Aerospace Engineering	Institution of Industrial Nanomaterials	2017
India	Mangalore Institute of Technology and Engineering	Faculty of Engineering, Graduate School of Science and Technology, Faculty of Advanced Science and Technology	2018
Indonesia	Electrical Engineering School, Graduate School, Telkom University	Faculty of Engineering, Graduate School of Science and Technology, Faculty of Advanced Science and Technology	2014
Indonesia	Faculty of Engineering, Hasanuddin University	Faculty of Engineering, Graduate School of Science and Technology, Faculty of Advanced Science and Technology	2015
Indonesia	Faculty of Industrial Technology, Islamic University of Indonesia	Faculty of Engineering, Graduate School of Science and Technology, Faculty of Advanced Science and Technology	2017
Indonesia	Faculty of Engineering, Universitas Negeri Surabaya	Faculty of Advanced Science and Technology	2020
Indonesia	Faculty of Pharmacy, University of Padjadjaran	Faculty of Life Sciences, School of Pharmacy, Graduate School of Pharmaceutical Sciences	2020
Italy	The University of Brescia	Faculty of Engineering, Graduate School of Science and Technology, Faculty of Advanced Science and Technology	2020
Kenya	School of Humanities and Social Sciences, Pwani University	Faculty of Letters, Graduate School of Social and Cultural Sciences	2015
Korea	College of Education, Kangnam University	Faculty of Education	2002
Korea	Advanced Process and Materials R&BD Group, Korea Institute of Industrial Technology	Faculty of Engineering, Graduate School of Science and Technology, Faculty of Advanced Science and Technology	2003
Korea	College of Engineering, Hoseo University	Faculty of Engineering, Graduate School of Science and Technology, Faculty of Advanced Science and Technology	2007
Korea	College of Health Science, Korea University / Department of Bio-convergence engineering, Korea University Graduate School	School of Medicine, Faculty of Life Sciences, Graduate School of Health Sciences	2007
Korea	College of Engineering, Korea Maritime and Ocean University	Faculty of Engineering, Graduate School of Science and Technology, Faculty of Advanced Science and Technology	2011
Korea	Graduate School of Kosin University and College of Natural Science, Kosin University	Faculty of Science, Faculty of Engineering, Graduate School of Science and Technology, Faculty of Advanced Science and Technology	2011
Korea	College of Engineering, Yonsei University	Faculty of Engineering, Graduate School of Science and Technology, Faculty of Advanced Science and Technology	2013
Korea	Laboratory Animal Resource Center, Korea Research Institute of Bioscience and Biotechnology	Institute of Resource Development and Analysis	2013
Korea	Light Metal Division, Korea Institute of Materials Science	Magnesium Research Center	2014
Korea	College of Natural Sciences, Teachers' College, Kyungpook National University	Faculty of Science, Graduate School of Science and Technology, Faculty of Advanced Science and Technology	2014
Korea	Magnesium Technology Innovation Center, Seoul National University	Magnesium Research Center	2015
Korea	College of Health Science and Institute of Biomedical Engineering, Yonsei University at Wonju	Faculty of Advanced Science and Technology, International Research Organization for Advanced Science and Technology	2018
Korea	Center for Advanced Aerospace Materials (CAAM), Pohang University of Science and Technology (POSTECH)	Magnesium Research Center	2020
Kyrgyz	Institute of Chemistry and Chemical Technology of National Academy of Science of the Kyrgyz Republic	Institution of Industrial Nanomaterials	2014
Kyrgyz	Faculty of Engineering, Faculty of Science, Institute of Natural and Applied Sciences, Kyrgyz-Turkish Manas University	Faculty of Science, Faculty of Engineering, Graduate School of Science and Technology, Faculty of Advanced Science and Technology	2016
Laos	Faculty of Engineering, Souphanouvong University	Faculty of Engineering, Graduate School of Science and Technology, Faculty of Advanced Science and Technology	2017
Malaysia	Universiti Teknologi PETRONAS	Faculty of Science, Faculty of Engineering, Graduate School of Science and Technology, Faculty of Advanced Science and Technology	2012
Malaysia	Universiti Malaysia Sarawak	International Research Center for Medical Sciences	2017
Malaysia	Centre for Environmental Sustainability and Water Security, University Technology Malaysia	Center for Water Cycle, Marine Environment, and Disaster Management	2018
Malaysia	Earth Observation Centre, Institute of Climate Change, Universiti Kebangsaan Malaysia	Center for Water Cycle, Marine Environment, and Disaster Management	2019
Malta	The Center for Molecular Medicine and Biobanking, University of Malta	Faculty of Life Sciences, Graduate School of Medical Sciences, School of Medicine	2019
Mongol	School of Mathematics and Computer Science, National University of Mongolia	Faculty of Science, Graduate School of Science and Technology, Faculty of Advanced Science and Technology	2013
Mongol	Mongolian University of Science and Technology	Faculty of Engineering, Graduate School of Science and Technology, Faculty of Advanced Science and Technology	2016
Myanmar	Mandalay Technological University	Faculty of Engineering, Graduate School of Science and Technology, Faculty of Advanced Science and Technology	2015
Netherlands	Faculty of Engineering Technology, University of Twente	Faculty of Engineering, Graduate School of Science and Technology, Faculty of Advanced Science and Technology	2015
Philippines	College of Engineering, De La Salle University-Manila	Faculty of Engineering, Graduate School of Science and Technology, Faculty of Advanced Science and Technology, Institute of Industrial Nanomaterials	2011
Philippines	Mindanao State University-Iligan Institute of Technology	Faculty of Life Sciences, School of Pharmacy, Graduate School of Pharmaceutical Sciences	2020
Poland	Faculty of Materials Science and Ceramics, AGH University of Science and Technology	Graduate School of Science and Technology, Faculty of Advanced Science and Technology	2010
Republic of South Africa	School of Pharmacy and Faculty of Natural Sciences, University of the Western Cape	School of Pharmacy, Graduate School of Pharmaceutical Sciences, Faculty of Life Sciences	2018
Russia	Aircraft and Mechanical Engineering Faculties, Novosibirsk State Technical University	Institution of Industrial Nanomaterials	2008
Russia	Institute of Advanced Technologies, Togliatti State University	Magnesium Research Center	2015
Singapore	Cancer Science Institute of Singapore (CSI), National University of Singapore	International Research Center for Medical Sciences	2017

Country	University / Institute	Counterpart	Since
Spain	The Spanish National Research Council	Institute of Resource Development and Analysis	2018
Sudan	Medicinal and Aromatic Plants and Traditional Medicine Research Institute	Faculty of Life Science, Graduate School of Pharmaceutical Sciences, School of Pharmacy	2012
Switzerland	Institute of Asian and Oriental Studies, Department of Japanology, University of Zurich	Faculty of Letters, Graduate School of Social and Cultural Sciences	2016
Switzerland	School of Biology, Faculty of Biology and Medicine, University of Lausanne	Faculty of Advanced Science and Technology, Graduate School of Science and Technology, Faculty of Science, International Research Organization for Advanced Science and Technology	2018
Switzerland	Faculty of Science, University of Geneva	Faculty of Science, Graduate School of Science and Technology, Faculty of Advanced Science and Technology	2019
Taiwan	College of Engineering, College of Electrical Engineering and Computer Science, National Kaohsiung First University of Science and Technology	Faculty of Engineering, Graduate School of Science and Technology, Faculty of Advanced Science and Technology	2009
Taiwan	National Laboratory Animal Center	Institute of Resource Development and Analysis	2010
Taiwan	College of Foreign Languages and Literatures, Tamkang University	Faculty of Letters, Graduate School of Social and Cultural Sciences	2013
Taiwan	College of Mechanical and Electrical Engineering, National Taipei University of Technology	Faculty of Engineering, Graduate School of Science and Technology, Faculty of Advanced Science and Technology	2014
Taiwan	Mariculture Research Center, Fisheries Research Institute, Council of Agriculture	Center for Water Cycle, Marine Environment, and Disaster Management	2014
Taiwan	Tatung University, College of Electrical Engineering and Computer Science	Faculty of Engineering, Graduate School of Science and Technology, Faculty of Advanced Science and Technology	2017
Taiwan	School of Law, Soochow University	Faculty of Law, Graduate School of Social and Cultural Sciences, School of Law	2017
Taiwan	School of Law, Fu Jen Catholic University	Faculty of Humanities and Social Sciences, Faculty of Law, School of Law, Graduate School of Social and Cultural Sciences	2018
Taiwan	Department of Materials Science and Engineering, National Taiwan University	Magnesium Research Center	2018
Taiwan	College of Health Sciences and Technology, National Central University	Faculty of Life Sciences	2018
Taiwan	Center for Micro/Nano Science and Technology, National Cheng Kung University	Magnesium Research Center	2019
Taiwan	College of Design, National Yunlin University of Science and Technology	Faculty of Life Sciences	2019
Tanzania	St. Francis University College of Health and Allied Sciences (SFUCHAS)	Joint Research Center for Human Retrovirus Infection, International Research Center for Medical Sciences	2017
Thailand	Faculty of Engineering, King Mongkut's Institute of Technology Ladkrabang	Faculty of Engineering, Graduate School of Science and Technology, Faculty of Advanced Science and Technology	2014
Thailand	Faculty of Allied Health Sciences, Naresuan University	Faculty of Life Sciences, Graduate School of Health Sciences	2016
Thailand	King Mongkut's University of Technology Thonburi, The Joint Graduate School of Energy and Environment	Graduate School of Science and Technology, Faculty of Advanced Science and Technology	2016
Thailand	Faculty of Science and Technology, Thammasat University	Faculty of Engineering, Graduate School of Science and Technology, Faculty of Advanced Science and Technology	2018
Thailand	Faculty of Engineering and Industrial Technology, Silpakorn University	Graduate School of Science and Technology, Faculty of Advanced Science and Technology	2018
Thailand	Faculty of Medicine, Prince of Songkla University	Faculty of Life Sciences, Joint Research for Humana Retrovirus Infection	2019
Turkey	Engineering Faculty, Cankiri Karatekin University	Faculty of Engineering, Graduate School of Science and Technology, Faculty of Advanced Science and Technology	2015
Turkey	Faculty of Engineering, Graduate School of Natural and Applied Science, Gazi University	Faculty of Engineering, Graduate School of Science and Technology, Faculty of Advanced Science and Technology	2015
Turkey	Kilis 7 Aralik University	School of Pharmacy, Graduate School of Pharmaceutical Sciences	2017
Turkey	The Faculty of Agriculture, Ordu University	School of Pharmacy, Graduate School of Pharmaceutical Sciences	2017
Turkey	Anadolu University	Faculty of Life Sciences, School of Pharmacy, Graduate School of Pharmaceutical Sciences	2017
UK	Mary Lyon Centre, MRC Harwell	Institute of Resource Development and Analysis	2011
UK	The School of Engineering, University of Glasgow	Institution of Industrial Nanomaterials	2014
UK	School of Metallurgy and Materials, The University of Birmingham	Graduate School of Science and Technology	2018
Uruguay	Institut Pasteur de Montevideo	Institute of Resource Development and Analysis	2017
USA	College of Engineering, Georgia Institute of Technology	Faculty of Engineering, Graduate School of Science and Technology, Faculty of Advanced Science and Technology	1996
USA	The Jackson Laboratory	Institute of Resource Development and Analysis	2004
USA	School of Nursing, University of California, San Francisco	Faculty of Sciences, Graduate School of Science of Health and Technology, Faculty of Advanced Science and Technology	2011
USA	School of Nursing and Health Professions, University of San Francisco	Faculty of Sciences, Graduate School of Science of Health and Technology, Faculty of Advanced Science and Technology	2012
USA	Mouse Biology Program, University of California, Davis	Institute of Resource Development and Analysis	2013
USA	Center for Inflammation, Immunity & Infection, Georgia State University	Faculty of Life Science, Graduate School of Pharmaceutical Sciences, School of Pharmacy	2013
USA	Michigan State University	Faculty of Advanced Science and Technology, International Research Organization for Advanced Science and Technology	2018
USA	Virginia Institute of Marine Science (VIMS), College of William and Mary	Center for Water Cycle, Marine Environment and Disaster Management	2019
USA	Board of Trustees, University of Florida	Magnesium Research Center	2020
USA	The University of New Mexico (UNM) College of Pharmacy	Faculty of Life Sciences, School of Pharmacy, Graduate School of Pharmaceutical Sciences	2020
Vietnam	Vietnam Institute of Geosciences and Mineral Resources, Ministry of National Resources and Environment	Faculty of Science, Graduate School of Science and Technology, Faculty of Advanced Science and Technology	2007
Vietnam	Danang University of Technology	Faculty of Engineering, Graduate School of Science and Technology, Faculty of Advanced Science and Technology	2008
Vietnam	Vietnam National Museum of Nature, Vietnam Academy of Science and Technology	Graduate School of Science and Technology, Faculty of Advanced Science and Technology	2012
Vietnam	Institute of Marine Geology and Geophysics, Vietnam Academy of Science and Technology	Graduate School of Science and Technology, Faculty of Advanced Science and Technology	2017
Vietnam	National Centre for Hydrometeorological Forecasting, Vietnam Meteorological and Hydrological Administration	Center for Water Cycle, Marine Environment and Disaster Management	2021

# INTERNATIONAL EXCHANGE AGREEMENTS

chart **3** Changes in Numbers of Partner Institutions (As of September 1, 2021)

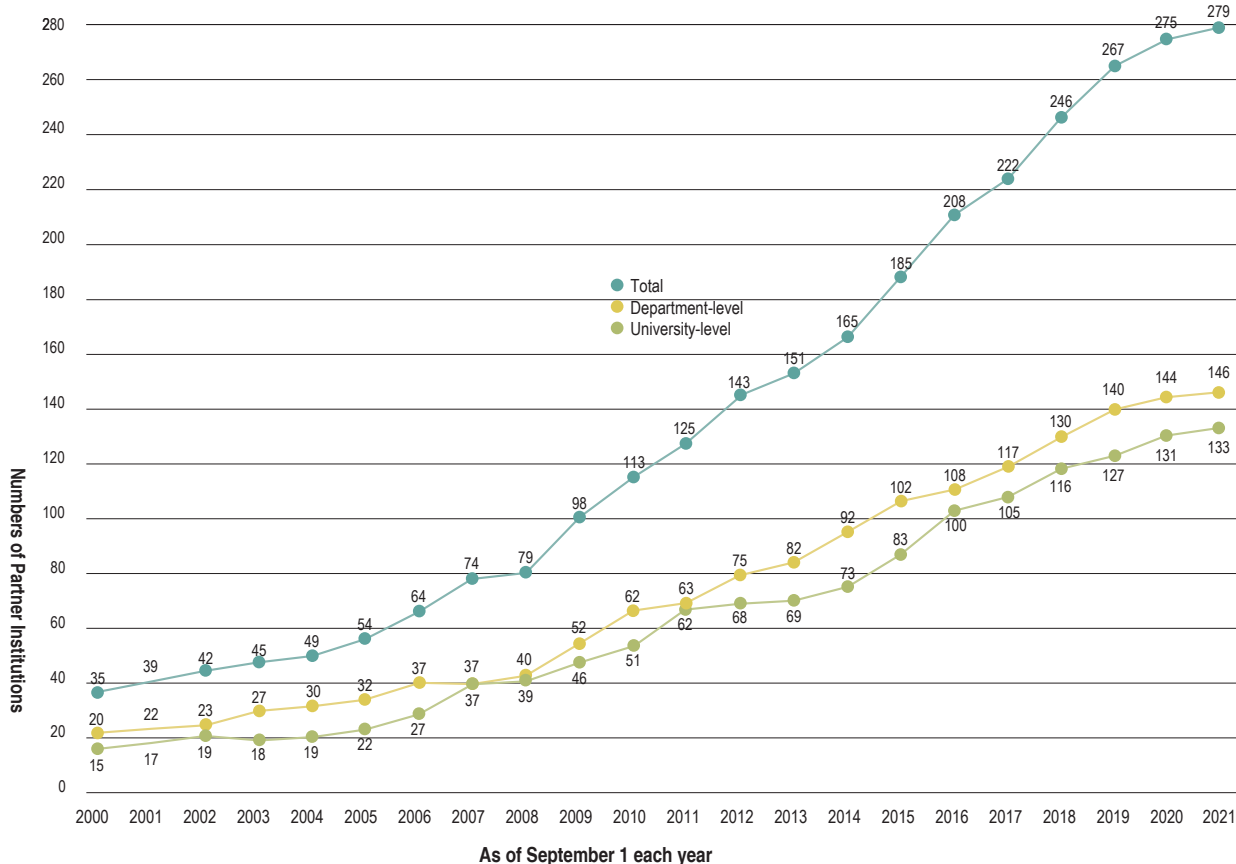
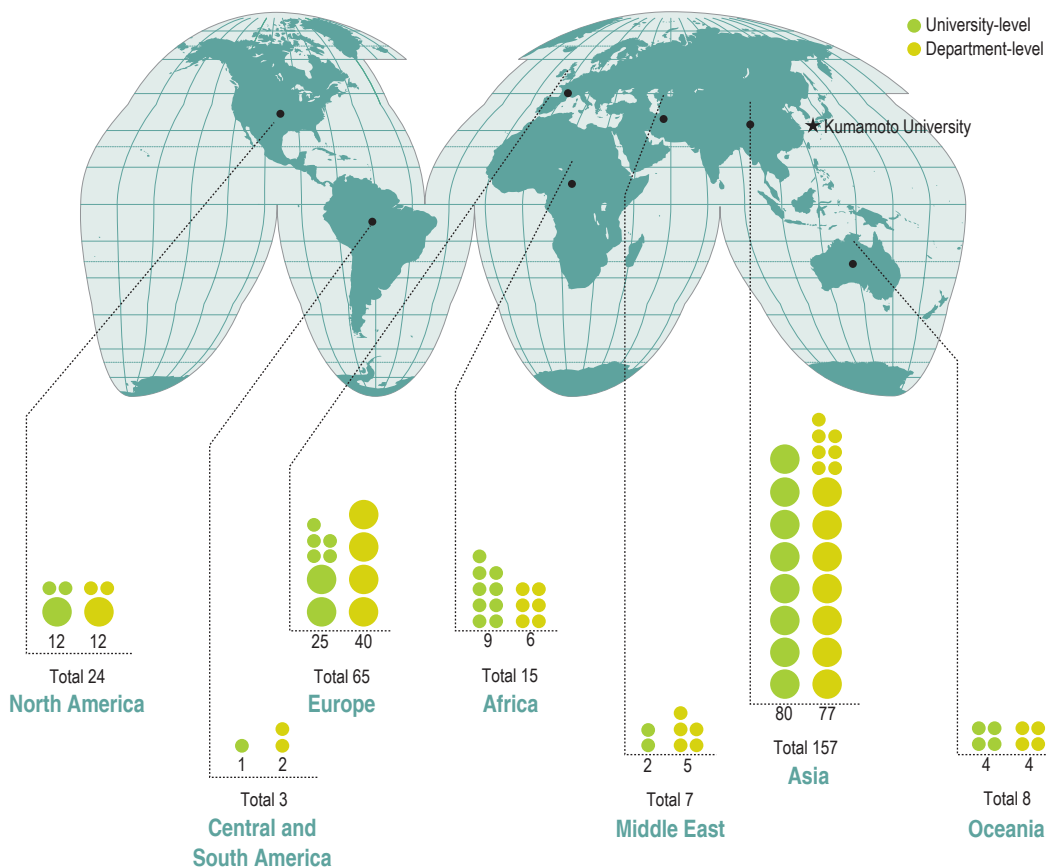


chart **4** WORLD MAP WITH THE NUMBERS OF PARTNER INSTITUTIONS



# RESEARCHERS AND SCHOLARS EXCHANGES

(As of May 1, 2021)

Region	Country	University Staff Sent Abroad	Visiting Foreign Researchers
Asia	Bangladesh	0	6
	Cambodia	0	0
	China	0	38
	India	0	4
	Indonesia	0	6
	Kazakhstan	0	0
	Korea	0	44
	Malaysia	0	0
	Mongol	0	2
	Myanmar	0	1
	Nepal	0	3
	Philippines	0	2
	Singapore	0	1
	Sri Lanka	0	0
	Taiwan	0	0
	Thailand	0	2
Vietnam	0	3	
	Sub-total	0	112
Middle East	United Arab Emirates	0	0
	Iran	0	0
	Turkey	0	3
		Sub-total	0
Africa	Egypt	0	6
	Ethiopia	0	0
	Rwanda	0	0
	South Africa	0	1
	Sudan	0	3
	Tanzania	0	23
	Zambia	0	0
	Sub-total	0	33
Oceania	Australia	0	4
	New Zealand	0	0
		Sub-total	0
North America	Canada	0	4
	USA	3	10
		Sub-total	3
South-Middle America	Argentina	0	1
	Brazil	0	1
	Costarica	0	0
	Mexico	0	1
	Peru	0	0
	Sub-total	0	3

Region	Country	University Staff Sent Abroad	Visiting Foreign Researchers
Europe	Austria	0	0
	Azerbaijan	0	0
	Belgium	0	0
	Croatia	0	0
	Cyprus	0	0
	Czech	0	1
	Denmark	0	0
	Finland	0	0
	France	0	4
	Germany	1	4
	Greece	0	1
	Hungary	0	1
	Italy	0	0
	Kyrgyz	0	0
	Latvia	0	0
	Malta	0	0
	Netherlands	0	0
	Norway	0	0
	Poland	0	0
	Portugal	0	0
	Romania	0	0
	Russia	0	0
	Slovakia	0	0
	Slovenia	0	0
	Spain	0	1
	Sweden	0	1
	Switzerland	0	1
UK	2	6	
Ukraine	0	0	
	Sub-total	3	20
Total		6	189

# INTERNATIONAL STUDENTS

(As of May 1, 2021)

Region	Country	Faculties					Graduate Schools					Japanese Language Trainees	Total
		Undergraduates	Research Students	Auditors	Special Auditors	Sub-total	Graduates	Research Students	Special Auditors	Special Research Students	Sub-total		
Asia	Bangladesh					0	16				16		16
	China	23	13			36	156	23		1	180		216
	India	1				1	2				2		3
	Indonesia					0	28				28		28
	Korea	6				6	2	1			3		9
	Lao People's Democratic Republic					0		1			1		1
	Malaysia	12				12	5				5		17
	Mongol	5				5	5				5		10
	Myanmar					0	7				7		7
	Singapore					0	1				1		1
	Taiwan					0	2	1			3		3
	Thailand				1	1	14			1	15		16
	Vietnam				1	1	3			1	4		5
Sub-total		47	13	0	2	62	241	26	0	3	270	0	332
Middle East	Afghanistan					0	8				8		8
	Iran					0	2				2		2
	Iraq					0	1				1		1
	Turkey					0	1				1		1
	Sub-total		0	0	0	0	12	0	0	0	12	0	12
South-Middle America	Dominican Republic					0	1				1		1
	Mexico					0	2				2		2
	Sub-total		0	0	0	0	3	0	0	0	3	0	3
Africa	Djibouti					0	1				1		1
	Egypt					0	7				7		7
	Ghana					0	6				6		6
	Kenya					0	1				1		1
	Malawi					0	1				1		1
	Mauritania					0	1				1		1
	Sudan					0	1				1		1
	Tanzania					0	3				3		3
	Zambia					0	1				1		1
	Sub-total		0	0	0	0	22	0	0	0	22	0	22
Europe	Austria					0	1				1		1
	Estonia					0		1			1		1
	Germany					0	1				1		1
	Kazakhstan					0	1				1		1
	Poland					0	1				1		1
	Sub-total		0	0	0	0	4	1	0	0	5	0	5
Total (From 33 countries)		47	13	0	2	62	282	27	0	3	312	0	374

## JAPANESE STUDENTS ABROAD

The table below shows the number of students who have studied abroad at overseas universities with which Kumamoto University has concluded a student exchange agreement, or have otherwise mutually agreed on a student exchange. (The period of study abroad is not indicated)

Country	Partner University	Number of Students
Canada	University of Calgary	1
Thailand	Chiang Mai University	1
UK	University of Leeds	2
Vietnam	Foreign Trade University	1
Total (April 2020- March 2021)		5

Due to COVID-19, KU students were not allowed to study abroad, and because of this, the above numbers are indicating the numbers of students who participated in online classes offered at partner universities.

(Reference) April 2019- March 2020

Country	Partner University	Number of Students
Australia	University of Technology Sydney	3
Canada	University of Alberta	13
Canada	University of Calgary	7
China	Anhui University	8
China	Beijing Institute of Technology	12
China	Shandong University	9
China	Tongji University	1
Czech	Academy of Sciences of the Czech Republic	1
Czech	University of Pardubice	1
Denmark	University of Copenhagen	1
France	Aix-Marseille University	7
France	University Bordeaux Montaigne	1
France	University of Clermont Auvergne	1
Germany	Tuebingen University	2
Germany	Heinrich Heine University Dusseldorf	1
Germany	Wurzburg University	2
Indonesia	Institut Teknologi Sepuluh Nopember	14
Ireland	Waterford Institute of Technology	2
Korea	Dong-A University	1
Korea	Pukyong National University	2
Korea	Pusan National University	3
Korea	University of Seoul	1
Laos	National University of Laos	1
Latvia	Riga Technical University	21
Malaysia	University Putra Malaysia	6
Malaysia	Universiti Teknologi PETRONAS	7
Malaysia	University Sains Malaysia	1
New Zealand	Massey University	13
Poland	University of Warsaw	1
Poland	Lublin University of Technology	1
Slovenia	University of Maribor	2
Spain	Valladolid University	2
Taiwan	Chang Jung Christian University	3
Taiwan	National Kaohsiung University of Science and Technology	20
Taiwan	Southern Taiwan University of Science and Technology	11
Thailand	Chulalongkorn University	8
Thailand	Kasetsart University	1
Thailand	Khon Kaen University	1
Thailand	King Mongkut University of Technology-Thonburi	6
Thailand	Silpakorn University	10
Turkey	Canakkale Onsekiz Mart University	1
UK	University of Birmingham	2
UK	University of Leeds	12
USA	Georgia State University	4
USA	Montana State University	11
USA	University of California, San Francisco	1
USA	University of Massachusetts Boston	2
USA	University of Montana	2
Vietnam	Foreign Trade University	2
Total (April 2019- March 2020)		245

## OVERSEAS FOREIGN LANGUAGE TRAINING PROGRAM

While expanding the number of partner universities that students can attend for foreign-language training during spring and summer breaks, we are striving for greater differentiation among destinations to provide students with diverse study-abroad opportunities. Partners include Montana State University (USA), the University of Alberta (Canada), the University of Leeds (England), the University of Freiburg (Germany), Riga Technical University (Latvia), Massey University (New Zealand) and additional destinations in the Americas, Europe, Southeast Asia and other locations are being planned. The program not only immerses students in a foreign language, but also provides them with an opportunity to experience the unique culture of the host country.

## INTERNATIONAL PROGRAMS

### Kumamoto University Short-Term Exchange Program

The Kumamoto University Short-Term Exchange Program is designed for full-time foreign undergraduate students of universities that have a student exchange agreement with Kumamoto University. The program offers courses on Japanese language, Japanese and Asian society and culture, and advanced science and technology. At Kumamoto University, there are both half- and full-year programs, and students retain full-time student status at their home universities. This program encourages promotion of cultural and academic interactions between Kumamoto University and partner university students.

#### • E Course

Students in this course mainly take Short-Term Exchange Program classes taught in English, or Japanese languages classes if the students' Japanese language level is that of JLPT N3 or higher\*.

#### • J Course

Students in this course mainly take Japanese language classes and specialized undergraduate classes offered by each faculty. General Education classes and Short-Term Exchange Program classes taught in English are also available.



### Kumamoto University Japanese Studies Program

This is a one-year program intended for Japanese Studies Program students who are MEXT\*\* scholarship recipients. The purpose of the program is to teach the skills that are important for Japanese studies and research, and to encourage development of perspectives that take the broad approaches to Japanese culture and language needed to live in society.



## JAPANESE LANGUAGE CLASSES

The Center for International Education offers the following Japanese language classes for international students and researchers at Kumamoto University.

- Japanese language classes (JLPT N3\* equivalent or above)
- Intensive Japanese courses (non-credit) open to MEXT\*\* scholarship students and Teacher-Training students.
- Japanese Language Course for Beginners (non-credit) designed for Kumamoto University international students, researchers, and their family members\*\*\*.



\*The prerequisite for language proficiency will change from N3 to N2 level from October, 2022.

\*\* Ministry of Education, Culture, Sports, Science and Technology (Japan)

\*\*\*Children are not eligible.

# KUMAMOTO UNIVERSITY SUMMER PROGRAM

At Kumamoto University, we offer a short-term study program in Kumamoto for undergraduate students from our partner universities – the program is held in late July and early August.

This program is designed to provide an opportunity for undergraduate students from overseas partner universities to enjoy a short stay in Kumamoto while deepening their interest and understanding of life in Japan, as well as the natural and scientific aspects of Kumamoto and Kumamoto University.

Over the course of the 10-day program, participants enjoy lectures from professors at Kumamoto University, educational excursions to Minamata, Mt. Aso, and Kumamoto Castle, first-hand cultural experiences, and an international exchange event with local high school students.

All participating students give positive reviews of their experiences, with many expressing their gratitude at being given the opportunity to come to Japan, and an interest in returning to Kumamoto University to study in the future.



## DOUBLE DEGREE PROGRAMS

Through the cultivation and revitalization of relationships with overseas partner universities, we have established and continue to develop a high-quality student framework that includes 22 unique double-degree exchange programs. These efforts both enhance the global learning environment for Japanese students and attract outstanding international students from overseas.

### Lists of Double Degree Programs

Kumamoto University	Counterpart			
	Country	University / Institute	Course	Since
Graduate School of Science and Technology	Indonesia	Institut Teknologi Sepuluh Nopember (ITS)	Graduate Program	Master's / Doctoral (M)2013 / (D)2008
		Institut Teknologi Bandung	Graduate School	Master's / Doctoral (M)2020 / (D)2012
	Korea	Pai Chai University	Graduate School	Doctoral 2012
	Malaysia	Universiti Teknologi PETRONAS	Centre for Graduate Studies	Doctoral 2019
	Philippines	De La Salle University	Gokongwei College of Engineering	Master's / Doctoral (M)2016 / (D)2016
		Taiwan	Southern Taiwan University of Science and Technology	College of Engineering
	National Kaohsiung First University of Science and Technology		College of Engineering	Master's / Doctoral (M)2017 / (D)2009
		France	University of Bordeaux	Department of Sciences and Technologies
Blasé Pascal University			Doctoral 2015	
Université de Lorraine			Doctoral 2016	
Poland	AGH University of Science and Technology	Faculty of Materials Science and Ceramics	Doctoral 2010	
Graduate School of Medical Sciences	Thailand	Mahidol University	Faculty of Medicine Siriraj Hospital	Doctoral 2017
		Khon Kaen University	Faculty of Medicine	Doctoral 2017
		Chiang Mai University	Faculty of Medicine	Doctoral 2019
		Chiang Mai University	Faculty of Associated Medical Science	Doctoral 2020
		Prince of Songkla University	Faculty of Medicine	Doctoral 2020
	Malta	University of Malta	Centre for Molecular Medicine & Biobanking	Doctoral 2021

Latest Information ⇒ <https://www.kumamoto-u.ac.jp/kokusaikouryu/kokusaikouryuudata/doubledegree>



## INTERNATIONAL PROJECTS AND ACTIVITIES

### COIL Program and FD workshop about the COIL Program

Kumamoto University conducts the COIL program yearly between Global Leader Course (GLC) students of the university and students at the College of Staten Island of the City University of New York in the U.S. In 2020, we started the new COIL program between students taking subjects in Multidisciplinary Studies at Kumamoto University and students at the Institut Teknologi Sepuluh Nopember in Indonesia. The participants learned about the effective use of biomass from global and diverse viewpoints through team teaching given by professors from the partner universities (in Thailand, the Philippines, Malaysia, Spain and Australia). Collaborative lectures, discussions and exchange activities helped the participants improve their cross-cultural understanding and communication skills, and expand their network of contacts.

On March 9, 2021, Kumamoto University held an FD workshop about the COIL program. Lectures were given by two academic advisors who had already put this type of education into practice at Kumamoto University. They outlined COIL education and presented its practical considerations while giving examples.



FD workshop

### Public relations activities with online tools

Through the network of the Consortium of Six National Universities in Japan (SixERS), Kumamoto University conducted public relations activities targeting ASEAN members. We also participated in online study-abroad fairs for students and researchers in Central Asia, the U.S., South America, Africa etc. At the fairs, Kumamoto University's international students shared their experiences at the university and their daily lives in Kumamoto City.

The university also updated its website in English, enriching the content with interview articles with international students and research introduction videos. Amid the COVID-19 pandemic, Kumamoto University proactively sent out information, through the active use of online tools, to those who wanted to study at the Kumamoto University.



Online Study in Japan Weeks 2020

### Progress in international exchange at overseas offices

Kumamoto University Liaison Office at ITS (foundation: April 2010) has started to jointly use as the Six National Universities Network (SUN) Surabaya Office of SixERS in April 2020, aiming to further promote exchange between the SixERS (Japan) and Indonesia. In December 2020, an opening ceremony commemorating the start of the joint use took place, and the SixERS introduced themselves to students in Indonesia. While faculty members introduced the universities, students and alumni shared their experiences in studying at the universities. More than 250 students participated in the event, and questionnaires filled in after the event showed high satisfaction.

In October 2020, Kumamoto University established Kumamoto University Liaison Office of Tanzania as a base for joint research in Tanzania and the rest of sub-Saharan Africa.

Through the start of the joint use of its existing overseas office by the SixERS and the establishment of the new office, Kumamoto University has established a collaborative system that promotes student affairs, and academic and educational exchange.



Kumamoto University Liaison Office of Tanzania

### Presidents' meeting with Ege University (in Turkey)

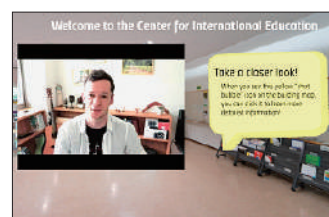
On June 9, 2020, Kumamoto University and Ege University held an online presidents' meeting commemorating the 20th anniversary of the signing of an university-level exchange agreement between them. Since concluding the university-level agreement in 2000, the two universities have actively conducted joint research projects and personnel exchange. At the meeting, views on future exchange plans were exchanged among the participants: from Ege University, seven people, including the President, Vice Presidents, and Dean of the Faculty of Science; and from Kumamoto University, the President, Vice President, and faculty members who conduct joint research with Ege University. This presidents' meeting is expected to prove for further exchange between the two universities.



Presidents' meeting

### Kumamoto University Global Youth Campus

The Summer Festa, an open campus event the Global Youth Campus holds every year, was held online this time. The event distributed a virtual tour of the campus, students gave presentations of their study abroad experiences via Zoom, and participants had an opportunity to talk with some of the current students of the Global Leader Course. We also conducted a special education program, "Global Leadership Training and Education Program for High School Students (Higo Jishukan)", giving special lessons and schooling on demand and online to 34 high school students in the prefecture aspiring to become global leaders. Furthermore, the Global Youth Campus has strengthened collaboration with the National Institute of Technology, Kumamoto College. The campus delivered online lectures in English to 120 students in their second year at the College, thereby contributing to early global education in the region.



Online Summer Festa

<b>President</b>		OGAWA Hisao, M.D., Ph.D.
<b>Trustees</b>	Vice-Presidents	TOMIZAWA Kazuhito, D.D.S., Ph.D.
		OTANI Jun, Ph.D.
		USAGAWA Tsuyoshi, D.Eng.
		YAHATA Hideyuki, Ph.D.
	Administrative Director	ARIMATSU Masahiro
<b>Auditors</b>		SONODA Takanori
		TATEISHI Kazuhiro
<b>Vice-Presidents</b>		BABA Hideo, M.D., Ph.D.
		KAI Hirofumi, Ph.D.
		SHIMIZU Kiyoyuki, Ph.D.
		CHIKAWA Fusao, D.Sc.
		ITO Hironori, L.L.D.
		OBATA Hiroki, Ph. D.
		MAEDA Hitomi, RN, Ph.D.
<b>Advisor</b>		MIYAO Chikako
<b>Faculty of Letters</b>	Dean	MIZUMOTO Toyofumi, M.Lit.
Center for Soseki and Hearn Studies	Director	HAMADA Akira, M.Lit.,DEA.
<b>Faculty of Education</b>	Dean	FUJITA Yutaka,Ph.D.
Center for Educational Research and School Development	Director	HOSHIKAWA Takashi, Ph.D.
Affiliated School	General Director	IFUKU Hirotohi, Ph.D.
Kindergarten Attached to the Faculty of Education	Principal	MIYAMURA Mari,B.A.
Elementary School Attached to the Faculty of Education	Principal	MORI Kotoe,B.A.
Junior High School Attached to the Faculty of Education	Principal	YAMAMOTO Kazuo, B.A.
Special Support School Attached to the Faculty of Education	Principal	UEMURA Miki,B.A.
<b>Faculty of Law</b>	Dean	NOBUHARU Obinata, Ph.D.
<b>Faculty of Science</b>	Dean	TANI Tokio, D.Sc.
<b>School of Medicine</b>	Dean	YAMAGATA Kazuya, M.D., Ph.D.
<b>School of Pharmacy</b>	Dean	MORIOKA Hiroshi, Ph.D.
<b>Faculty of Engineering</b>	Dean	TSUREKAWA Sadahiro, D.Eng.
Engineering Research Equipment Center	Director	KUNITAKE Masashi, D.Eng.
Education Center for Global Human Resources in Engineering	Director	IHARA Toshihiro, Ph.D.
<b>Graduate School of Education</b>	Dean	YAHATA-TANIGUCHI Ayako, Ph.D.
<b>Faculty of Humanities and Social Sciences</b>	Dean	MIZUMOTO Toyofumi, M.Lit.
International Research Center for Humanities and Socail Sciences (IRCHSS)	Director	KODAMA Nozomi, M.Litt.
<b>Faculty of Advanced Science and Technology</b>	Dean	TANI Tokio, D.Sc.
Innovative Research and Education Center for Engineers in Kumamoto University	Director	TANI Tokio, D.Sc.
International Research Center for Agricultural and Environmental Biology	Director	SAWA Shinichiro, D.Sc.
<b>Faculty of Life Sciences</b>	Dean	YAMAGATA Kazuya, M.D., Ph.D.
Southern Kyushu and Okinawa Unit Center of Japan Environment and Children's Study	Director	KATOH Takahiko, M.D., Ph.D.
Center for Medical Education and Research Director	Director	OIKE Yuichi, M.D., Ph.D.
Center for Metabolic Regulation of Healty Aging	Director	ARAKI Eiichi, M.D., Ph.D.
Global Center for Natural Resources Sciences	Director	MISUMI Shogo, Ph.D.
Center for Biomedical Laboratory Science	Director	TASHIRO Hironori, M.D.,Ph.D.
<b>Graduate School of Social and Cultural Sciences</b>	Dean	HAYASHI Ichiro, LL.M.
<b>Graduate School of Science and Technology</b>	Dean	TSUREKAWA Sadahiro, D.Eng.
Global Joint Education Center for Science and Technology	Director	TSUREKAWA Sadahiro, D.Eng.
<b>Graduate School of Medical Sciences</b>	Dean	YAMAGATA Kazuya, M.D., Ph.D.
<b>Graduate School of Health Sciences</b>	Dean	TASHIRO Hironori, M.D.,Ph.D.
<b>Graduate School of Pharmaceutical Sciences</b>	Dean	MORIOKA Hiroshi, Ph.D.
<b>Institute of Molecular Embryology and Genetics</b>	Director	NIWA Hitoshi, M.D., Ph.D.
Center for Organ Regeneration Research	Director	NISHINAKAMURA Ryuichi, M.D., Ph.D.
<b>Institute of Industrial Nanomaterials</b>	Director	IDA Shintaro, D.Eng.
<b>University Hospital</b>	Director	BABA Hideo, M.D., Ph.D.
<b>Priority Organization for Innovation and Excellence</b>	Director	OGAWA Hisao, M.D., Ph.D.
<b>Kumamoto Innovative Development Organization</b>	Director	OTANI Jun, Ph.D.
<b>Organization for Globalization</b>	Director	OTANI Jun, Ph.D.
<b>Headquarters for Admissions and Education</b>	Director	USAGAWA Tsuyoshi, D.Eng.
Mathematical Science Education Center	Director	USAGAWA Tsuyoshi, D.Eng.
Center for International Education	Director	USAGAWA Tsuyoshi, D.Eng.
<b>Institute of Light Metals</b>	Director	KAWAMURA Yoshihito, Ph.D.
<b>International Research Center for Medical Sciences</b>	Director	SUDA Toshio, M.D., Ph.D.
<b>International Research Organization for Advanced Science and Technology</b>	Director	TAKASHIMA Kazuki, D. Eng.
<b>Center for Management of Information Technologies</b>	Director	SUGITANI Kenichi, D.Eng.
<b>The Memorial Museum of the Fifth High School</b>	Director	ITO Ryuichi, D.Eng.
<b>EISEI-BUNKO Research Center</b>	Director	INABA Tsuguharu, D.Lit.
<b>Research Center for Instructional Systems</b>	Director	KITA Toshihiro, Ph.D.
<b>Center for Water Cycle, Marine Environment, and Disaster Management</b>	Director	KAKIMOTO Ryuji, Ph.D.
<b>Magnesium Research Center</b>	Director	KAWAMURA Yoshihito, Ph.D.
<b>Institute of Resource Development and Analysis</b>	Director	OIKE Yuichi, M.D., Ph.D.
<b>Environmental Safety Center</b>	Director	TOGAWA Kenichi, D.Ecs.
<b>Research Center for Buried Cultural Properties</b>	Director	ARAI Hidenaga, D. Lit.
<b>Joint Research Center for Human Retrovirus Infection</b>	Director	MATSUSHITA Shuzo, Ph.D.
<b>University Library</b>	Director	TANAKA Tomohiro, Ph.D.
<b>Health Care Center</b>	Director	FUJISE Noboru, M.D., Ph.D.
<b>Student Accessibility Support Room</b>	Director	FUJISE Noboru, M.D., Ph.D.
<b>University Archives</b>	Director	TANAKA Tomohiro, Ph.D.
<b>Institutional Research Office</b>	Director	OTANI Jun, Ph.D.
<b>Campus Design Office</b>	Director	TANAKA Tomoyuki, D.Arch.

# Number Of University Personnel

(As of May 1, 2021)

Classification	Professors	Associate Professors	Lecturers (Full-time)	Assistant Professors	Research Assistant	Teachers (Attached School)	Sub-total	Administrative and Technical Staff	Total
Faculty of Education						82	82		82
Graduate School of Education	29	26	1				56		56
Faculty of Humanities and Social Sciences	45	62	4	1	1		113		113
Faculty of Advanced Science and Technology	79	67	1	35			182		182
Faculty of Life Sciences	74	45	14	91			224	3	227
Institute of Molecular Embryology and Genetics	8	7	3	8			26		26
Institute of Industrial Nanomaterials	8	7		2			17		17
Kumamoto University Hospital	15	10	30	141			196	1,164	1,360
Priority Organization for Innovation and Excellence		7		5			12		12
Kumamoto Innovative Development Organization	5	7					12	3	15
Headquarters for Admissions and Education	4	4	2	3			13		13
International Research Center for Medical Sciences	4	6		1			11	9	20
International Research Organization for Advanced Science and Technology	2	2		1			5		5
Center for Management of Information Technologies	4	1		1			6		6
The Memorial Museum of the Fifth High School		1					1		1
Eisei-Bunko Research Center	1	1					2		2
Research Center for Instructional Systems	3	3					6		6
Center for Water Cycle, Marine Environment, and Disaster Management	6	6		2			14		14
Magnesium Research Center	3	1		3			7		7
Institute of Resource Development and Analysis	4	2	1	3			10		10
Environmental Safety Center		1					1		1
Research Center for Buried Cultural Properties		1		2			3		3
Joint Research Center for Human Retrovirus Infection	6	1	1	1			9		9
Health Care Center	1	1		1			3	2	5
Technical Division							0	81	81
Administration Bureau							0	436	436
<b>Total</b>	<b>301</b>	<b>269</b>	<b>57</b>	<b>301</b>	<b>1</b>	<b>82</b>	<b>1,011</b>	<b>1,698</b>	<b>2,709</b>

## ■ Undergraduate Students ■

Faculty and School	Number	
Letters	792	519
Education	1,000	608
Law	900	431
Science	832	215
Medicine	1,318	698
Pharmacy	491	235
Engineering	2,296	448
<b>Total</b>	<b>7,629</b>	<b>3,154</b>

## ■ Graduate Students ■

Faculty and School	Number	Master of Ed.	Doctor
Education	2	65	—
Social and Cultural Sciences	155	—	66
Science and Technology	908	—	136
Medical Sciences	49	—	335
Health Sciences	52	—	34
Pharmaceutical Sciences	74	—	65
<b>Total</b>	<b>1,240</b>	<b>65</b>	<b>636</b>

## ■ Diploma Course ■

Faculty and School	Number	
Diploma Course in Special Needs Education	11	4

## ■ Special Course ■

Faculty and School	Number	
Yogo Teacher Training	40	39

## ■ Attached Schools ■

Faculty and School	Number	
Elementary School	643	321
Junior High School	476	239
Special Support School	60	23
Kindergarten	108	45
<b>Total</b>	<b>1,287</b>	<b>628</b>

\*Colored figures indicate the number of females included in the figures.

# STUDENT FINANCIAL AID

## ■ Japanese Students ■

(The 2020 School Year)

Classification		Number of Students	Japanese Government Scholarship	Other Scholarships	Total
Undergraduate Students			4,354	128	4,482
Graduate Students	Master		542	16	558
	Doctor		70	7	77
	Master of Ed.		11	0	11
<b>Total</b>		<b>0</b>	<b>4,977</b>	<b>151</b>	<b>5,128</b>

## ■ International Students ■

(As of May 1, 2021)

Classification	Number of Students	Japanese Government Scholarship	Other Scholarships	Total
Undergraduate Students	62	4	28	32
Graduate Students	312	64	65	129
Japanese Language Trainees	0	0	0	0
<b>Total</b>	<b>374</b>	<b>68</b>	<b>93</b>	<b>161</b>

## ■ Undergraduate Students ■

Faculty and School	Admission Quota	Applicants	Newly Enrolled Students
Letters	170	591 (6)	185 —
Education	230	543 —	242 —
Law	210	697 (2)	215 —
Science	200	718 (2)	202 —
Medicine	110	388 (1)	110 —
Health Sciences	144	349 —	145 —
Pharmacy	90	360 (2)	89 —
Engineering	513	1,120 (7)	518 —
<b>Total</b>	<b>1,667</b>	<b>4,766 (20)</b>	<b>1,706 —</b>

\* ( ) Number indicates privately funded entrance exam students from overseas (included in total)

## ■ Graduate Students (April Admission) ■

Faculty and School	Admission Quota	Applicants	Newly Enrolled Students
Education	30	44 —	38 —
Social and Cultural Sciences	Master	92 (28)	49 (14)
	Doctor	15 (5)	14 (4)
Science and Technology	Master	486 (8)	423 (8)
	Doctor	33 —	26 —
Medical Sciences	Master	28 (3)	24 (3)
	Doctor	85 (14)	80 (12)
Health Sciences	Master	27 —	19 —
	Doctor	5 —	4 —
Pharmaceutical Sciences	Master	43 (1)	36 —
	Doctor	11 —	10 —
<b>Total</b>	<b>806</b>	<b>873 (59)</b>	<b>723 (41)</b>

\* ( ) Number indicates privately funded entrance exam students from overseas (included in total)

## ■ Diploma Course ■

Admission Quota	Applicants	Newly Enrolled Students	
Diploma Course in Special Needs Education	15	12	11

## ■ Special Course ■

Admission Quota	Applicants	Newly Enrolled Students	
Yogo Teacher Training Special Course	40	68	40

# STUDENT TUITIONS AND FEES

(As of May 1, 2021 / Unit: yen)

	Entrance exam fee	Admission fee	Tuition fees
Undergraduate Students	17,000	282,000	535,800 / year
Graduate Students	30,000	282,000	535,800 / year
Research Students	9,800	84,600	29,700 / month
Auditing students*	9,800	28,200	14,800 / credit

\* Includes non-degree course students

# DEGREES AWARDED

(The 2020 School Year)

## ■ Master's Degree ■

Classification	Course Completion	
	2020.4-2021.3	Total
Master of Arts	31	1,137
Master of Education	19	1,299
Master of Law	3	487
Master of Public Policy	2	100
Master of Medical Sciences	14	348
Master of Health Sciences	15	150
Master of Nursing	2	76
Master of Pharmaceutical Sciences	29	1,866
Master of Clinical Pharmacy	—	76
Master of Health Life Science	7	35
Master of Science	81	2,672
Master of Engineering	358	10,648
Master of Philosophy	8	143
Master of Science in Instructional Systems	12	164
<b>Total</b>	<b>581</b>	<b>19,201</b>

## ■ Professional Degree ■

Classification	Course Completion	
	2020.4-2021.3	Total
Master of Education	19	47
Juris Doctor	—	189
<b>Total</b>	<b>19</b>	<b>236</b>

## ■ Master's Degree ■

Classification	Old System	New System			
		Course Completion		Thesis Submission	
		2020.4-2021.3	Total	2020.4-2021.3	Total
Doctor of Literature	—	2	85	1	22
Doctor of Public Policy	—	2	24	—	4
Doctor of Laws	—	—	9	—	0
Doctor of Science	—	10	243	—	32
Doctor of Engineering	—	16	745	—	110
Doctor of Philosophy	—	14	415	1	21
Doctor of Medical Sciences	1,663	56	2,343	21	1,042
Doctor of Health Sciences	—	1	18	—	2
Doctor of Nursing	—	—	3	—	0
Doctor of Pharmaceutical Sciences	—	15	364	1	168
Doctor of Clinical Pharmacy	—	—	7	—	0
Doctor of Life Sciences	—	—	27	1	6
Doctor of Philosophy in Health Life Science	—	—	4	—	0
<b>Total</b>	<b>1,663</b>	<b>116</b>	<b>4,287</b>	<b>25</b>	<b>1,407</b>

# AFTER GRADUATION

(As of May, 2021)

## ■ Undergraduate Students ■

Faculty and School	Number of Graduates	Number of Continuing Higher Education	Number of Employed	Others
Letters	169	7	138	24
Education	247	31	177	39
Law	198	15	160	23
Science	186	110	66	10
Medicine	261	23	115	123
Pharmacy	94	33	56	5
Engineering	544	322	199	23
<b>Total</b>	<b>1,699</b>	<b>541</b>	<b>911</b>	<b>247</b>

## ■ Graduate Students ■

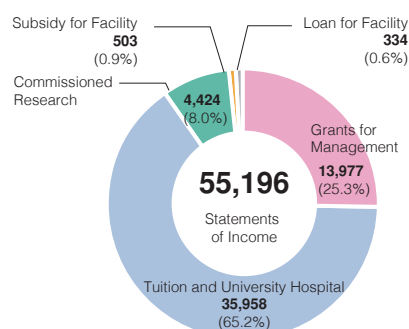
Faculty and School		Number of Graduates	Number of Continuing Higher Education	Number of Employed	Others
Education	Master	19	0	15	4
Social and Cultural Sciences	Master	54	8	32	14
	Doctor	8	0	5	3
Science and Technology	Master	441	27	394	20
	Doctor	41	0	29	12
Medical Sciences	Master	16	4	12	0
	Doctor	73	0	53	20
Health Sciences	Master	17	0	16	1
	Doctor	1	0	1	0
Pharmaceutical Sciences	Master	34	10	20	4
	Doctor	15	0	15	0
Master of Education	Doctor	19	0	18	1
<b>Total</b>		<b>738</b>	<b>49</b>	<b>610</b>	<b>79</b>

# BUDGET BREAKDOWN

## ■ Statements of Income (FY2021) ■

Unit: million yen

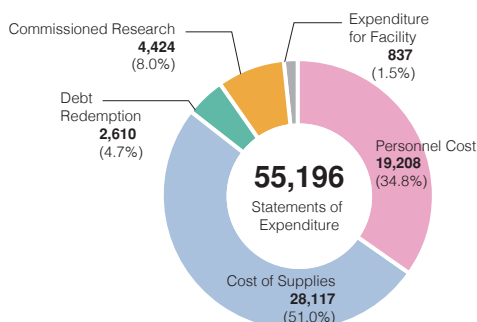
Grants for Management	13,977
Tuition and University Hospital	35,958
Commissioned Research	4,424
Subsidy for Facility	503
Loan for Facility	334
<b>Total</b>	<b>55,196</b>



## ■ Statements of Expenditure (FY2021) ■

Unit: million yen

Personnel Cost	19,208
Cost of Supplies	28,117
Debt Redemption	2,610
Commissioned Research	4,424
Expenditure for Facility	837
<b>Total</b>	<b>55,196</b>



## ■ Funds from Other Sources (FY2020) ■

Unit: thousand yen

Categories	Proposals Selected	Research Expense
Grants-in-Aid for Scientific Research	680	1,769,116
Grants&Endowment	1,161	1,744,515
Commissioned Research	370	2,245,644
Cooperative Research with Private Sector	411	649,212
<b>Total</b>	<b>2,622</b>	<b>6,408,487</b>

\*Includes Special Coordination Fund to Promote Science and Technology

\*Includes endowed courses

\*Excludes Kumamoto University Endowment

\*Excludes Grant-in-Aid for JSPS Research Fellows

## ■ Grants-in-Aid for Scientific Research (FY2020) ■

Unit: thousand yen

Categories	Proposals Selected	*Research Expense
Grant-in-Aid for Scientific Research on Innovative Areas (Research in a proposed research area)	18	150,150
Grant-in-Aid for Transformative Research Areas	3	31,720
Grant-in-Aid for Special Purposes	1	22,620
Grant-in-Aid for Scientific Research (S)	3	94,770
Grant-in-Aid for Scientific Research (A)	7	107,510
Grant-in-Aid for Scientific Research (B)	111	539,483
Grant-in-Aid for Scientific Research (C)	317	406,901
Grant-in-Aid for Challenging Research (Pioneering)	1	3,250
Grant-in-Aid for Challenging Research (Exploratory)	35	90,220
Grant-in-Aid for Young Scientists (B)	4	1,475
Grant-in-Aid for Early-Career Scientists	150	217,803
Grant-in-Aid for Research Activity Start-up	17	22,374
Grant-in-Aid for Publication of Scientific Research Results	0	0
Fund for the Promotion of Joint International Research(Fostering Joint International Research(A))	0	0
Fund for the Promotion of Joint International Research(Fostering Joint International Research(B))	9	37,960
Grant-in-Aid for JSPS Fellows	37	40,493
<b>Total</b>	<b>713</b>	<b>1,766,729</b>

\*Includes overhead costs

## INTERNATIONAL HOUSE

Kumamoto University International House Residence A was constructed in 1985 to provide accommodation for international students and foreign researchers. To respond to the increase in the number of foreign students and researchers, Residence B was built in 1995, followed by Residences C, D and E in November 2009. The I-House office in Residence A is available to respond to questions from residents and to provide consultation and assistance.

**Address: 7-763 Kurokami, Chuo-ku, Kumamoto City, Kumamoto 860-0862**

Location: About 1.5 km east of the Kurokami Campus

Residence	Room Type				Total
	Family	Couple	Single	Shared (quad)	
A	3	3	49		55
B	4	3	50		57
C				36	36
D				36	36
E			48		48
<b>Total number of rooms</b>	<b>7</b>	<b>6</b>	<b>147</b>	<b>72</b>	<b>232</b>



### Common Facilities

Lounge	2
Conference room	1
Japanese-style room	1
Public Lobby	1
Multipurpose room	1
Laundry room	10

## STUDENT DORMITORY

Student dormitory is available to provide a living environment conducive to study for undergraduates attending the university from within Japan and overseas.

Location: About 1.5 km east of the Kurokami Campus

### Maximum capacity

Men	200
Women	80
<b>Total</b>	<b>280</b>

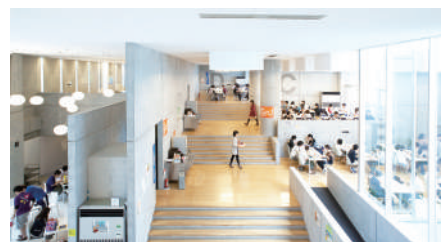


## HEALTH CARE CENTER

The Health Care Center provides routine and special medical checkups, offers students guidance concerning their health, school life, studies and current path as well as responding in the event of an emergency.

## CAFETERIAS AND SHOPS

Kurokami North	Student Hall	Cafeteria and Book Store (food, books, stationery, entertainment counter)
	Kusunoki Hall	Cafeteria/Reception Room/ Japanese-style Rooms/Lodging Rooms
Kurokami South	FORICO	Cafeteria and Convenience Store (food, books, stationery, entertainment counter)
Honjo	Student Union "Kaiju"	Cafeteria/Kiosk
Oe	Banjikan Hall	Cafeteria/Kiosk



## SPORTS FACILITIES

Kurokami	Track and field stadium, rugby pitch, soccer field, tennis courts, swimming pool, gymnasium, athletic equipment storage
Toroku*	Baseball ground, tennis courts, archery range, Japanese archery range, gymnasium, driving practice field, training camp building, athletic equipment storage
Honjo	Tennis courts, gymnasium (including a martial arts hall)
Oe	Athletic field, tennis courts, gymnasium
Misumi	Yacht boathouse, training camp building
Hirogi	Rowboat boathouse

\*Mainly used for extra-curricular activities





**1756 Saishunkan established (Origin of School of Medicine and University Hospital)**

**1874 Kumamoto Teachers College established**

**1885 Kumamoto Pharmaceutical College established**

**1887 The Fifth High School established**

**1896 Kumamoto Medical College established**

**1897 Kumamoto Technical College established**

There were five institutions of higher education in Kumamoto during the Meiji Era which eventually united to form Kumamoto University. Among these institutions was The Fifth High School, which was a center for higher learning in western Japan, and provided students with preparatory education to enter the Japanese Imperial Universities. A number of foreign teachers joined the school to offer western culture and knowledge to the students.

These young men, aged from their teens to late twenties, resided in a dormitory, and built a tradition of student community as well as lasting friendships.

**1949 Kumamoto University established**

Kumamoto University was established under the National School Establishment Law that reformed the preceding Japanese educational system. The new university incorporated the older institutions described above.

At its establishment, The Fifth High School comprised six departments, with an enrollment of approximately 1,100 students.

Discussion of the school's curriculum began soon after the founding of the school. After the Graduate School of Medicine was established in 1955, other graduate schools were subsequently established within the university.

The establishment of research and education institutions within the university was started early on. In the 1950s, both Kumamoto University Hospital and the University Library were completed. In addition, a number of research centers that conduct the highest level of scholarly research have been consecutively established over the past 20 years.

**2004 Kumamoto University enters the 21st Century**

The acceptance of government-sponsored international exchange students started around 1960, but records indicate that several international exchange students studied in the Faculty of Medicine as early as the 1950s. Since the 1960s, though, the number of international students has been steadily increasing. There were approximately 50 international students at the university in 1984, and that number increased to over 300 twenty years later in 2004.

Since Kumamoto University became a National University Corporation in 2004, the university has been ushering in an era of change. Nevertheless, the university will still continue to strive for further advancements in education, research, and medical care based on the knowledge and experience it has gained since it was first established, in order to contribute to society in the 21st century.



## HISTORY OF THE UNIVERSITY HOSPITAL

The history of Kumamoto University Hospital goes back to the opening of the Hosokawa Clan Hospital in 1870. After being reorganized and relocated several times, the hospital was moved to its current location in 1901.

In 1949, after Kumamoto Medical College was absorbed into Kumamoto University, the name of the hospital was changed to Kumamoto University Hospital. It started with a system of eleven medical departments.

In the past several decades, in order to respond to the segmentation and advancement of medical services, the hospital established central consultation facilities as well as new medical departments with the aim of increasing efficiency, among other improvements.

Kumamoto University Hospital has grown to become a general hospital with technologically advanced medical facilities and a comprehensive medical system. It is still continuing to make advancements in its aim to become a university hospital that can continue to provide quality medical care in the 21st century.



## HISTORICAL FIGURES



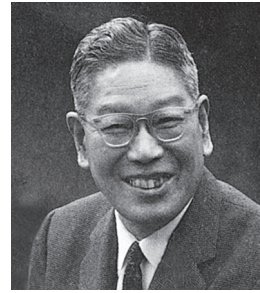
**Lafcadio Hearn**  
(1850-1904)

Though he was of Irish extraction, he was born in Greece. He came to Japan in 1890. In 1891, he took up his new post at The Fifth High School. His work "Ghost Stories" ("*Kaidan*") introduces Japan's mysterious traditions in English, and is widely known.



**Natsume, Soseki**  
(1867-1916)

In 1896, he came to Kumamoto to take up his new post as a lecturer at The Fifth High School. He was residing in Kumamoto during the time he went on the trip that appears in his famous novel "*Kusamakura*".



**Ikeda, Hayato**  
(1899-1965)

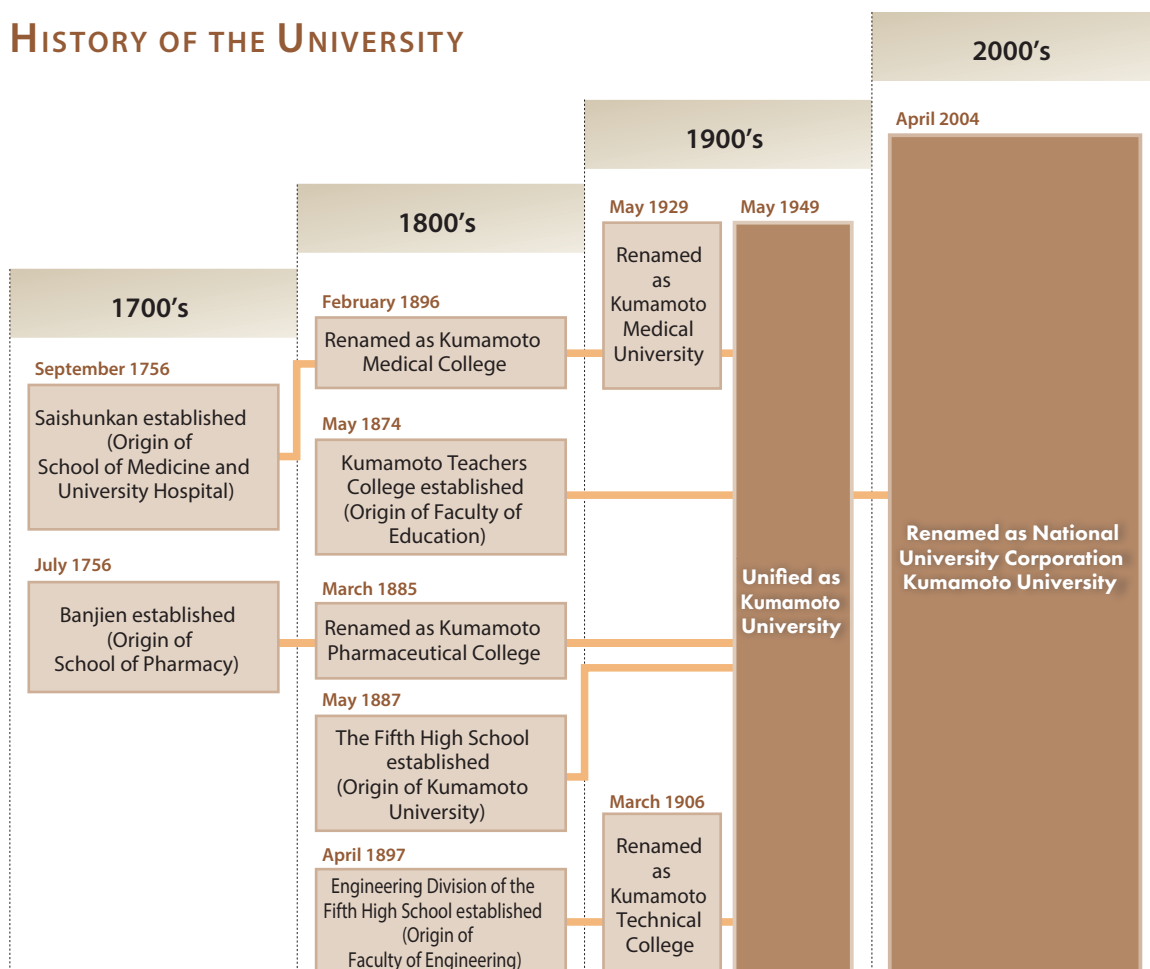
Hayato Ikeda was a politician who was born in Hiroshima prefecture and studied at The Fifth High School. He became the Prime Minister of Japan in 1960, and his administration led Japan for a prolonged time during its era of high economic growth.



**Sato, Eisaku**  
(1901-1975)

Eisaku Sato was a politician who was born in Yamaguchi prefecture and studied at The Fifth High School. He became the Prime Minister of Japan in 1964, and played a key role in the return of Okinawa to Japanese rule and the creation of Japan's "Three Non-Nuclear Principles." He received the Nobel Peace Prize in 1974.

## HISTORY OF THE UNIVERSITY



# KUROKAMI NORTH CAMPUS



### Kurokami North Campus

- 1 Kurokami North N1 (Faculty of Letters/Law Main Bldg.)
- 2 Kurokami North N2 (Faculty of Letters/Law South Bldg.)
- 3 Kurokami North N3 (Graduate School of Social and Cultural Science Bldg. 1)
- 4 Kurokami North N4 (Faculty of Letters/Law Lecture Bldg. B)
- 5 Kurokami North N5 (Graduate School of Social and Cultural Science Bldg. 2)
- 6 Kurokami North N6 (Faculty of Letters/Law North Bldg.)
- 7 Kurokami North N7 (Faculty of Education Music Hall)
- 8 Kurokami North N8 (Faculty of Education Practical Training Laboratory)
- 9 Kurokami North N9 (Faculty of Education West Bldg.)
- 10 Kurokami North N10 (Faculty of Education Main Bldg.)
- 11 Kurokami North N11 (Faculty of Education East Bldg.)
- 12 University Archives
- 13 'Ai Work' Job Café
- 14 Chimeido Hall
- 15 Kusunoki Hall
- 16 Facility and Administration Building
- 17 Kurokami North C1 (Academic Commons Kurokami Bldg. 5)
- 18 The Memorial Museum of the Fifth High School ※
- 19 University Library (Central Building)
- 20 University Library (South Building)/ The Open University of Japan Kumamoto Study Center
- 21 Health Care Center
- 22 North Student Hall Bldg. A (Cafeteria, Bookstore and Shops)
- 23 North Student Hall Bldg. B
- 24 Guard Station
- 25 The Front Gate (The Red Gate) ※
- 26 Kurokami North E1 (General Education Building)
- 27 Kurokami North E2 (Academic Commons Kurokami Bldg. 6)
- 28 Kurokami North E3 (Academic Commons Kurokami Bldg. 6)

- 29 The Chemical Laboratory of the Fifth High School ※
- 30 Environmental Safety Center
- 31 Center for International Education
- 32 Club Rooms 1
- 33 Kurokami Gymnasium
- 34 Club Rooms 2
- 35 Club Rooms 3
- 36 Athletic Field (Bufugen)
- 37 Swimming Pool

### Special Support School Attached to the Faculty of Education

- 38 Kurokami North E8 (Faculty of Education East classrooms)
- 39 Kurokami North E9 (Special Support School Bldg. A)
- 40 Kurokami North E10 (Special Support School Bldg. B)
- 41 Kurokami North E11 (Special Support School Bldg. C)
- 42 Kurokami North E12 (Special Support School Gymnasium)
- 43 Kurokami North E13 ('Suzukake-no-ie' ADL Training House)
- 44 Swimming Pool
- 45 Athletic Field

Kurokami Campus (311, 170m<sup>2</sup>)



(taken in 2017)

# KUROKAMI SOUTH CAMPUS



**Kurokami South Campus**

46 Kurokami South W1  
(Faculty of Engineering Research Bldg. III)

47 Kurokami South W2  
(Faculty of Engineering Core Laboratory Bldg.)

48 Kurokami South W3  
(Academic Commons Kurokami Bldg. 1)

49 Kurokami South W4  
(Faculty of Engineering Research Bldg. II)

50 Kurokami South W5  
(Faculty of Engineering Research Bldg. IV)

51 Kurokami South W6 (Machine Shop A)

52 Kurokami South W7 (Machine Shop B)

53 Kurokami South W8  
(Creative Engineering and Design Education Laboratory 1)

54 Kurokami South W9  
(Creative Engineering and Design Education Laboratory 2)

55 100th Anniversary Hall

56 Kurokami South C1  
(Academic Commons Kurokami Bldg. 7)

57 Kurokami South C2  
(Faculty of Engineering Bldg. 1)

58 Kurokami South C3  
(Faculty of Engineering Research Bldg. 1)

59 Kurokami South C4  
(Academic Commons Kurokami Bldg. 2)

60 Kurokami South C5  
(Laboratory for Nanostructure Characterization)

61 Kurokami South C6 (Acoustic Laboratory)

62 Kurokami South C7  
(Academic Commons Kurokami Bldg. 3)

63 Kurokami South C8 (Faculty of Engineering Bldg. 2)

64 Kurokami South C9  
(Center for Management of Information Technologies)

65 University Archives

66 University Hall (Administrative Offices) ■

67 Museum of the Engineering Faculty ※

68 Guard Station

69 Kurokami South E1 (Faculty of Science Bldg. 1&2)

70 Kurokami South E2  
(Faculty of Science / Graduate School of Science and Technology Core Research Laboratory Bldg.)

71 Kurokami South E3 (Faculty of Science Bldg. 3)

72 Kurokami South E4 (Faculty of Science Bldg. 4)

73 Kurokami South E5  
(Research Building for Science and Technology)

74 Kurokami South E6  
(Experimental Building for Science and Technology)

75 Kurokami South E7  
(Acoustic Analysis Laboratory for Underwater Environments)

76 Kurokami South E8  
(Low Temperature and He Gas Recovery Station)

77 South Student Hall

78 FORICO (Cafeteria and Convenience Store)

79 Kurokami South S1 (Hydraulic Laboratory)

80 Kurokami South S2  
(Instrumental Analysis Center for Engineering Research)

81 Kurokami South S3 (Disaster Prevention Laboratory)

82 Kurokami South S4 (Kurokami Radioisotope Laboratory)

83 Kurokami South S5  
(Research Center for Buried Cultural Properties)

84 Kurokami South S6 (Venture Laboratory)  
(Shock Wave and Condensed Matter Research Building)

85 Kurokami South S7 (Incubation Laboratory)

86 Kurokami South S8 (Shock Wave Laboratory)

87 Kurokami South S9  
(Engineering Experimental Laboratories)

88 Kurokami South S10 (MRC Casting Laboratory)  
(Magnesium Research Center(MRC))

89 Kurokami South S11  
(MRC Forming and Machining Laboratory)

90 Kurokami South S12  
(International Research Center for Advanced Science and Technology)

91 Temporary Building D-2

# HONJO NORTH, CENTRAL, SOUTH CAMPUS



## Honjo North Campus

- 1 West Tower
- 2 East Tower
- 3 Central Examination Building
- 4 Outpatient Building
- 5 Administration Building
- 6 Yamasaki Hall ■
- 7 Welfare Facilities
- 8 Facilities Management Building
- 9 Honjo North1 (Clinical Medicine Research Building)
- 10 Honjo North2 (Medical Education & Library Building)
- 11 Honjo North3 (General Medical Research Building)
- 12 Honjo North4 (Basic Research Building)
- 13 Honjo North5 (The Center for Medical Education and Research)
- 14 Multistory Parking Garage 1
- 15 Multistory Parking Garage 2

## Honjo Central Campus

- 16 Honjo Central1 (Institute of Resource Development and Analysis (Center for Animal Resources and Development))
- 17 Honjo Central2 (Joint Research Center for Human Retrovirus Infection, Center for Animal Resources and Development)
- 18 Honjo Central3 (International Research Center for Medical Sciences (IRCMS))
- 19 Honjo Central4 (Lecture Building)
- 20 Honjo Central5 (Institute of Molecular Embryology and Genetics)
- 21 Honjo Central6 (Institute of Resource Development and Analysis (Gene Technology Center / Radioisotope Center))
- 22 Honjo Central7 (Academic Commons Honjo-1)
- 23 Club Room 1
- 24 Club Room 2
- 25 Club Room 3
- 26 Higo Iku Monument Hall

## Honjo South Campus

- 27 Student Union "Kaiju"
- 28 Gymnasium
- 29 Honjo South1 (School of Health Sciences Bldg. A, B, C)
- 30 Honjo South2 (Academic Commons Honjo-2)
- 31 Honjo South3 (School of Health Sciences Bldg. E)
- 32 Club Room
- 33 Kobato Nursery



# Oe CAMPUS

## Oe Campus

- 1 Oe C1 (School of Pharmacy Main Bldg.)
- 2 Oe C2 (Research Laboratory Bldg.)
- 3 Oe C3 (Faculty of Life Sciences Research Laboratory Bldg.)

- 4 Oe C4 (Lecture Building)
- 5 Oe C5 (Center for Clinical Pharmaceutical Sciences)
- 6 Oe W1 (Animal House)
- 7 Oe W2 (Joint Research Building)
- 8 Oe W3 (Radioisotope Center)
- 9 Oe E1 (General Research Building)
- 10 Oe E2 (Instrumental Analysis Center)
- 11 Oe E3 (Medical Plant Garden Laboratory)
- 12 Compost Depot
- 13 Banjikan Hall (Restaurant, Seminar Room, Liaison Office)
- 14 Oe Gymnasium
- 15 The Kumayaku Museum and Miyamoto Memorial Hall
- 16 School of Pharmacy Resource Center
- 17 Oe E4 (Industrial Innovation Laboratory)
- 18 Staff Residence
- 19 Athletic Field
- 20 Medicinal Plant Garden

Honjo North, Central, South Campus (135,815m<sup>2</sup>)



(taken in 2017)

Oe Campus (53,352m<sup>2</sup>)



(taken in 2017)

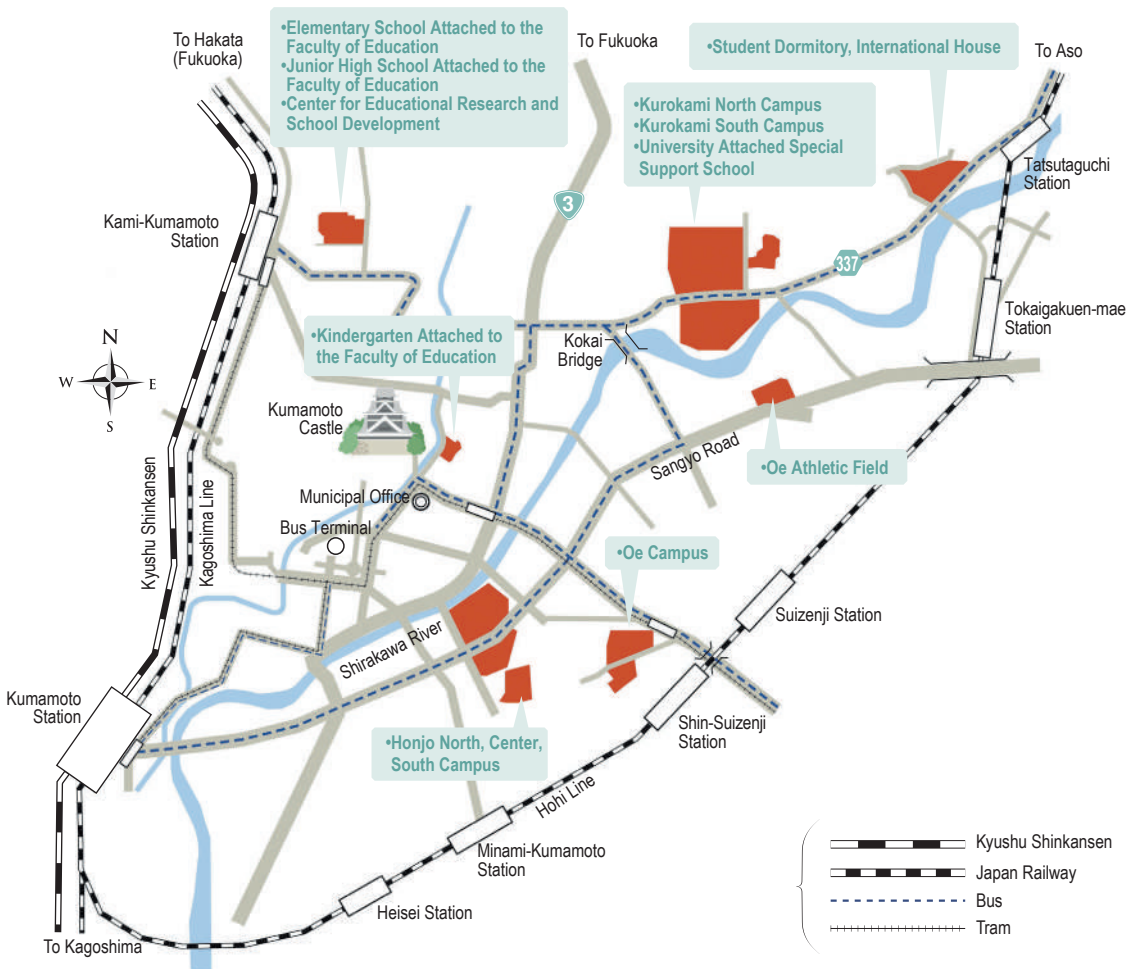
# LOCATION



## KYUSHU Island



## KUMAMOTO City





## The Kumamoto Area

Kumamoto University is located in the city of Kumamoto in Kyushu, the southern-most main island of Japan. Kumamoto City is the third biggest city in Kyushu. It has a population of approximately 740,000, which is equivalent to about 41% of the total population of the prefecture. By air it takes 90 minutes from Tokyo and 60 minutes from Osaka; by Kyushu Shinkansen it takes 40 minutes from Fukuoka City.

The weather is generally mild, though there is a rainy season from early June to mid-July, followed by a subtropically hot summer season. Autumn and spring offer the most comfortable weather. Warm clothing is necessary in January and February. It seldom snows even in midwinter, and never more than a few centimeters.

Known for its abundance of trees and greenery, Kumamoto is one of Japan's oldest cities. While offering the latest in modern facilities, Kumamoto has managed to retain a purity and simplicity of old Japanese customs, flavor, and spirit which make it an interesting place to visit and a delightful place to live.

Local attractions include Kumamoto Castle, one of the oldest and grandest medieval castle in Japan; Kumamoto downtown area, located 10-15 minutes away from Kumamoto University by bicycle and known for a lot of office building and shopping streets; the Amakusa Islands, a chain of 120 islands known for their exciting Christian history and plenty of rich nature; and Aso National Park, crowned by the active volcano Mt. Aso, with the largest caldera volcano in the world. Because of its proximity to Mt. Aso, the Kumamoto area also has an

abundance of natural hot springs. Kumamoto is also well-known in Japan for its delicious drinking water. Because the rainfall that soaks into the ground in the mountains of the Aso region takes many years to come out, one can always be able to drink delicious water.



# Kumamoto University

2-39-1 Kurokami, Chuo-ku, Kumamoto

860-8555 JAPAN

<https://ewww.kumamoto-u.ac.jp/en/>

