



Kumamoto University

2019-2020

Table of Contents

1 Introduction	1 Message from the President 2 Vision and Goals 3 Organization
2 Faculties and Schools	4 Faculty of Letters 5 Faculty of Law / Faculty of Humanities and Social Sciences 6 Graduate School of Social and Cultural Sciences 7-8 Faculty of Education / Graduate School of Education / Graduate School of Teacher Education 9 Faculty of Science 10 Faculty of Engineering 11-12 Faculty of Advanced Science and Technology / Graduate School of Science and Technology 13-14 School of Medicine / Graduate School of Medical Sciences / Graduate School of Health Sciences 15 School of Pharmacy / Graduate School of Pharmaceutical Sciences 16-17 Faculty of Life Sciences 18 Undergraduate and Graduate Courses
3 Centers and Institutes	19 Institute of Molecular Embryology and Genetics / Institute of Pulsed Power Science / Priority Organization for Innovation and Excellence 20 Organization for Globalization / Headquarters for Admissions and Education / International Research Center for Medical Sciences (IRCMS) 21 International Research Organization for Advanced Science and Technology (IROAST) Center for Management of Information Technologies / Kumamoto Innovative Development Organization (KIDO) / Research Center for Instructional Systems 22 Eisei-Bunko Research Center / Center for Water Cycle, Marine Environment, and Disaster Management (CWMD) / The Memorial Museum of the Fifth High School 23 Magnesium Research Center (MRC) / Institute of Resource Development and Analysis / Joint Research Center for Human Retrovirus Infection / University Archives / Environmental Safety Center 24 Research Center for Buried Cultural Properties / Health Care Center / Student Accessibility Support Room / Institutional Research Office / Campus Design Office 25-26 Local and Overseas Offices 27 University Hospital 28 University Library 29 Kumamoto University Museums
4 Academic and Research Projects	30-31 Top Global University Project 32 Program for Promoting Regional Revitalization by Universities as Centers of Community (COC+) 33 Program for Promoting the Enhancement of Research Universities 34-36 Initiatives to Develop Prominent Research
5 International Exchanges	37-41 International Exchange Agreements 42 Researchers and Scholars Exchanges 43 International Students 44 Japanese Students Abroad / Overseas Foreign Language Training Program 45-46 International Programs / Japanese Language Classes / Kumamoto University Summer and Spring Program / Double Degree Program 47 International Projects and Activities
6 Facts	48 Administrative Officers 49 Number of University Personnel 50 Student Enrollment / Student Financial Aid 51 Student Admission / Student Tuitions and Fees 52 Degrees Awarded / After Graduation 53 Budget Breakdown 54 International House / Residence Halls / Health Care Center / Cafeterias and Shops /Sports Facilities
7 History	55-56 History
8 Access	57-59 Campus Maps 60 Location 61 The Kumamoto Area



Message from the President

HARADA Shinji

President of Kumamoto University

Welcome to Kumamoto University (KU). Kumamoto is located in the center of Kyushu Island in Japan and is rich in nature. We have the large volcanic Aso mountain range in the eastern part of Kumamoto Prefecture. In the west, there is the picturesque Amakusa seashore with small islands connected by 5 bridges. KU is situated in Kumamoto City where historic Kumamoto castle is surrounded by trees. For this reason, the city is called FOREST CITY. We have a hill clad in fresh greenery behind the KU campus, giving us a tranquil atmosphere for studying. Kumamoto is also known for its high quality fresh water springs, which provide drinking water to the residents. These are some reasons I feel confident that visitors and international students in Kumamoto can have an enjoyable and high quality life.

KU is one of the oldest universities in Japan with seven faculties, ten graduate schools and 25 research centers/institutes (as of August 2019) that support a wide spectrum of educational and research activities. Currently, the university is home to around 8,000 undergraduate students and 2,000 graduate students, including 495 international students from 46 countries (as of May 2019). For over 100 years our university has been at the forefront of culture, advancing science and technology, and contributing to the development of the Japanese educational system. Recently, we have been selected by the Ministry of Education, Culture, Sports, Science and Technology (MEXT) for the following 3 projects; the Program for Promoting the Enhancement of Research

Universities, the Top Global University Project and the Program for Promoting Regional Revitalization by Universities as Center of Community. Consequently, KU will be seeing increased internationalization brought about by international academic and student exchange programs (as of September 1, 2019, we have partnered with 267 institutes from 53 countries and regions), global-collaboration research programs with the world's leading researchers, and other such international activities. The short-term international student exchange programs are conducted at both KU and our partner universities. Through these activities, KU has been contributing to local communities and to global society.

We seek to cultivate an open mind with a broad view, a creative imagination, the ability to solve problems, and the aptitude to communicate internationally. We believe this policy will ensure that many competent professionals and leaders of future societies will emanate from our university.

I hope this book helps you to learn more about Kumamoto University and its activities.

創造の森 挑戦の炎



“Forest of Creative Power, Blaze of Challenging Spirit”

Kumamoto University (KU), a globally active research university with roots in local communities, has adopted a motto that symbolizes the university's unique attributes and expresses its essential quality: “KU Spirit.”

VISION

Kumamoto University aims to contribute to the community and global society by cultivating intelligent, moral, and skillful people, while working for the creation, inheritance, and development of knowledge, following the spirit of the Fundamental Law of Education and the School Education Law.

GOALS

Education

In order to cultivate unique, creative people, the university provides a comprehensive education based on a consistent philosophy followed by all of our undergraduate departments and graduate schools.

Our undergraduate departments, with the help of a broad education, inculcate in students the abilities of international communication, adapting to the information age, and thinking and acting independently.

Our graduate schools cultivate highly specialized workers with comprehensive reasoning ability, technical knowledge, and internationally recognized skills, in addition to deep insight into humankind and nature, on the basis of the undergraduate education that our student receive.

As an institution that is open to the public, the university offers a place where people can engage in lifelong learning.

Research

The university strives to protect and develop humankind's cultural heritage, while enhancing its capabilities to function as a center of advanced academic research and proactively promote cutting-edge, creative academic research.

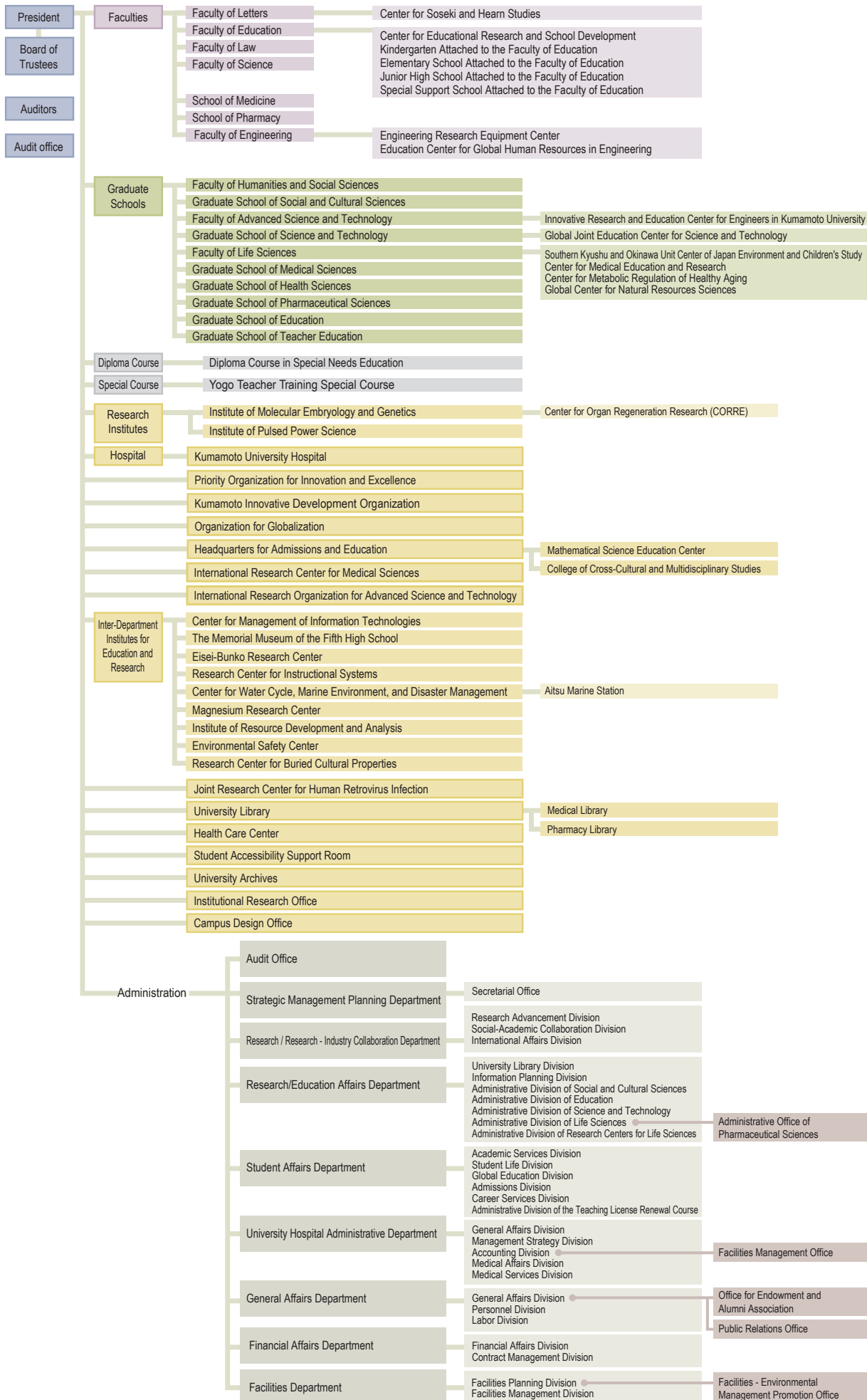
In addition, by making use of its unique features, comprehensively deepening knowledge in the fields of human science, social science, and natural science, as well as promoting interdisciplinary research, Kumamoto University is working to contribute to the harmonious coexistence of humans and the environment, as well as sustainable societal development.

Contributions to local and global communities

As a university located in a regional hub city, the university will strengthen its cooperation with the local community and serve the functions of being a central research facility and cultivating leaders in the local community. By striving to convey our academic culture to the world, the university will contribute to the promotion of local industry and to advancing the provision of information about the culture.

In addition, the university strives to promote international intellectual exchange, educate international students, and train graduate students capable of producing a bilateral international exchange.

ORGANIZATION





Faculty of Letters

- **Department of Integrated Human Studies**
Human Sciences, Socio-human Studies, Regional Science
- **Department of History**
Japanese History and Archaeology, the Modern World System
- **Department of Literature**
East-Asian Languages and Literature, Euro-American Languages and Literature, Transregional Studies of Language and Literature
- **Department of Communication and Information Studies**
Communication and Information Studies, Contemporary Cultural Resource Studies

Faculty of Letters

The Faculty of Letters was established in May 1949 as part of the new Faculty of Law and Letters. This faculty was then split into the Faculty of Law and the Faculty of Letters in 1979. The education and research framework of the Faculty of Letters consists of four educational departments, which are the Department of Integrated Human Studies, the Department of History, the Department of Literature, and the Department of Communications and Information Studies. The Faculty welcomes 170 new students each year. Approximately 70 faculty members are conducting academic research in a broad number of areas, including the humanities, social studies, and cultural studies.

To satisfy new and contemporary needs, three interdisciplinary courses that made use of an existent educational system for cross-disciplinary learning were established in 1997. In 2005, these courses were disbanded and the Department of Communication and Information Studies was established. The aim of its establishment is to help students acquire outstanding abilities in international communication using English, as well as to teach them to excel at processing information. There are numerous international students across the Faculty, which is striving to develop people who can contribute to the international community through various researches.

The Faculty's research activities include aspects of the history and social problems specifically related to Kumamoto prefecture. The Eisei-Bunko Research Center, an interdepart-

ment institute of Kumamoto University since 2017, was originally established as an affiliate institute of the Faculty of Letters in 2009. The purpose of the Center is to enable analysis of the scholarly values of historical materials in the Hosokawa clan's centuries-old collection, and to promote academic advances of its research. Currently, on-going projects by the Faculty such as archival studies of Minamata disease based on the aggregation of field research data, and literary studies of Meiji era writers who taught in Kumamoto are expected to be recognized as prioritized by the University.

■ Institution ■

Center for Soseki and Hearn Studies

The Faculty of Letters Center for Soseki and Hearn Studies (established December 2017) aims to create an organization dedicated to the comprehensive research of Natsume Soseki and Lafcadio Hearn, focusing mainly on the Kumamoto University's own collection, coordinating with cultural administrative organizations to promote cultural advancement in the region, and using these activities to train professional researchers who will contribute to research in the humanities and social studies as well as cultural promotion.

URL: <http://www.let.kumamoto-u.ac.jp/en/>



Faculty of Law

■ Department of Law

Faculty of Law

The Faculty of Law at Kumamoto University has been delivering high quality legal education for almost 70 years. Established in 1949, now with over 840 undergraduate students and around 50 full-time staff, we have evolved into one of the leading departments of law in Japan. We provide a stimulating and supportive environment for undergraduate

study. Students are taught in a mixture of large lectures and small seminar groups where they develop their analytical and critical skills. They may take a course of lectures on Public Law, Private Law and International Law. Alongside the law courses, students enrolled in this Faculty can also learn Economics, Political Science and Conflict Resolution.

URL: <http://www.law.kumamoto-u.ac.jp/en/>

FACULTY OF HUMANITIES AND SOCIAL SCIENCES ■ 人文社会科学研究部 ■

Following the establishment of the Faculty of Life Sciences and the Faculty of Advanced Science and Technology, which arose from the process of a stricter selection focusing on research fields in the graduate school, the Faculty of Humanities and Social Sciences was established on April 1, 2017 by reorganizing the Faculty of Letters, the Faculty of Law, the Graduate School of Social and Cultural Sciences, and the School of Law.

The establishment of the Faculty of Humanities and Social Sciences means that university teaching staff are effectively allocated among the three fields of life sciences, natural sciences and human/social sciences. This realignment makes it possible to work through the rapid population decline among youth and to meet the growing needs of globalization. It also makes it possible to readjust education programs more flexibly, thereby ensuring a quality academic education.

The Faculty of Humanities and Social Sciences aims to

contribute academically with practical relevance to community vitalization, to construct a research hub for human and social science studies in order to actively produce worldwide scholarly achievements, and to promote global level research through active collaboration among members of the human/social science and legal fields. In human science fields such as psychology, history and sociology in particular, the Faculty also intends to augment relationships and cooperation with overseas colleges and universities and bring about greater research achievements internationally, thereby shifting conventional academic culture studies to a more invigorating course infused with international cooperation.

The Faculty is also contributing to the field of conflict resolution by consolidating the research resources of humanities, law and policy in order to establish a solid foundation of international standards in research, and to develop practical areas of research that will be able to respond to the various demands of society.



Graduate School of Social and Cultural Sciences

■ Master's Program is composed of:

Division of Law, Policy and Conflict Resolution Studies
 Division of Modern Social Human Studies
 Division of Cultural Science Studies
 Division of Instructional System Studies

■ Doctoral Program is composed of:

Division of Human and Social Science Studies
 Division of Cultural Science Studies
 Division of Instructional System Studies

■ Graduate School of Social and Cultural Sciences

The Graduate School of Social and Cultural Sciences was established in April 2002. It offers a three-year independent, interdisciplinary and comprehensive Doctoral Program based on a wide range of fields given in the Faculty of Letters and the Faculty of Law. The Division of Instructional System Studies (Master's Program), which was designed to foster e-learning professionals, was founded in April 2006. In April 2008 was established the present Graduate School of Social and Cultural Sciences (GSSCS) which consists of Master's Program and Doctoral Program, by reorganizing the former Graduate School of Social and Cultural Sciences (Doctoral Program), Graduate School of Letters (Master's Program), Graduate School of Law (Master's Program), and Division of Instructional System Studies.

The Master's Program of the GSSCS is composed of four divisions: Law, Policy and Conflict Resolution Studies; Modern Social Human Studies; Cultural Science Studies; Instructional System Studies. The first three divisions offer three, four and six courses respectively: Law, Policy and Conflict Resolution Research Course, Law and Public Policy Practice Course, Conflict Resolution Practice Course; East-Asian Business

Communication Specialist Course, Advanced Ethics Research Course, Field-Research Research Course, Cognitive Philosophy and Psychology Research Course; Cultural-Administration and Curator Specialist Course, High School Japanese-language Teaching Specialist Course, English-language Education Specialist Course, History Research Course, Japanese and East-Asian Culture Research Course, Euro-American Culture Research Course.

The Doctoral Program aims to cultivate highly specialized professionals and researchers. It is comprised of three divisions: Human and Social Science Studies, Cultural Science Studies, Instructional System Studies. The first two divisions offer six and four fields respectively: Public Policy Studies, Legal Studies, Conflict Resolution Studies, Advanced Ethics Studies, Field-Research Studies, Cognitive Philosophy and Psychology Studies; English-language Pedagogy Studies, History Studies, Japanese and East-Asian Culture Studies, Euro-American Culture Studies. These doctoral divisions and fields are open to working people and overseas students, as well as those who go on from the Master's Program.

URL: <http://ewww.kumamoto-u.ac.jp/dept/social/>



Faculty of Education

■ **Curricula**

Elementary School Teacher, Junior High School Teacher,
 Special Needs Education Teacher, School Health Teacher

■ **Departments**

Japanese, Social Studies, Mathematics, Natural Science, Music, Art, Health and Physical Education,
 Industrial Technology, Living Sciences, Foreign Languages (English), Special Education, School Health,
 Pedagogy, Psychology

Graduate School of Education

Educational Practices Major, School Subject Methods and Practices Major

Graduate School of Teacher Education

Teacher Training Practices and Development Major

Faculty of Education

The Faculty of Education was established in May 1949 under the new Kumamoto University system. It originated from schools such as the Kumamoto Teacher's High School created in 1874.

The Faculty of Education currently has four courses. One course trains teachers for the elementary school and junior high school levels, while others train teachers for other types of schools.

In addition, at the Center for Educational Research and School Development, students can receive advice on matters related to educational practice, particularly what to do when problems occur on the job. The Center also engages in practical research.

■ Institution ■

Center for Educational Research and School Development

The Center analyzes and seeks practical solutions to the problems that arise in education. It also conducts research on what types of classes and curricula meet contemporary needs. To achieve these aims, it has established an Education Clinic Division, comprised of an Education Consultation Section and an Education Organization Section, and an Education Curriculum Division. It also develops comprehensive, practical activities in cooperation with related organizations.

■ Special Courses ■

Diploma Course in Special Needs Education

This course is geared toward incumbent teachers as well as current students from Kumamoto University and toward students with a BA degree or higher from other universities. Through specialized instruction in special needs education, the course helps students to fulfill the requirements for their Diploma and teaching certificate in Special Needs Education.

Yogo Teacher Training Special Course

This course is meant to produce highly qualified Yogo teachers. It is designed for those who already have their nursing license, as well as those who are in the process of obtaining it. The curriculum consists of general education subjects, specialized subjects in Yogo teacher and specialized subjects in teaching.

Graduate School of Education

The Graduate School of Education has offered a master's course program since April 1986. The department currently offers two majors based on the three organizational principles of practical application, interdisciplinary education and current practice: Educational Practices Major - school education (pedagogy and psychology), special needs education, and school health nursing education - and School Subject Methods and Practices Major - Language Education (Japanese and English), Science and Mathematics Education (science and mathematics), Social Science Education (social studies), Technology and Human Life Science (technology education and home economics education), and Arts and Sports Education (music, art, health and physical education). Since the aim of the department is to improve the quality and qualifications of teachers, in-service teachers are also admitted. The school provides instruction in and conducts research on educational practices.

Students who complete the Graduate School of Education course receive a Master of Education degree. Students can also work to receive their teaching certificates.

The Graduate School of Education will be phased out at the end of March, 2021.

Graduate School of Teacher Education

The Graduate School of Teacher Education was newly started in April of 2017, the only major being: Teacher Training Practices and Development.

The purpose of this major is to develop practical skills in teaching, guiding students, and in managing schools themselves, as well as developing the ability to conduct research on these topics.

This major is staffed with both researchers and practitioners.

In April, 2020, the Graduate School of Teacher Education will be expanded and start to offer the following three courses: 1) Advanced Course in Educational Practices, 2) Advanced Course in School Subject Methods and Practices, and 3) Advanced Course in Special Needs Education.

Students who complete the Graduate School of Teacher Education course receive a professional degree of Master of Education and their Advanced Class Teacher Certificates.

URL: <https://www.educ.kumamoto-u.ac.jp/?lang=en>



Faculty of Science

■ Department

Department of Science

■ Courses

Mathematics, Physics, Chemistry, Earth and Environmental Sciences, Biology

Faculty of Science

The Faculty of Science was established in May 1949 as one of the faculties under the new Kumamoto University system. It grew out of the science department of the Fifth High School, which was established in October 1887, and one part of Kumamoto Kogyo Senmon (Technical) High School. The Faculty of Science underwent some dramatic changes in 2004. The existing departments were merged into one department containing 5 courses. In addition, students are now able to decide what kind of educational program they want during their first two years after entering the university. Then, after accessing what course is right for their own needs, students choose a major in their junior year.

At the same time, the Faculty of Science provides detailed educational services that are targeted to individual students

through the implementation of such things as a departmental staff tutoring system.

While conducting fundamental research, which is what they specialize in, the Faculty of Science also actively conducts applied research in specific fields that meets the needs of communities and society. Although the path students take after they graduate usually involves obtaining employment in fields such as the government and other public offices, business, or the teaching profession, many students also choose to continue their education by entering a master's program.

URL: <http://www.sci.kumamoto-u.ac.jp/index.html>



Faculty of Engineering

- **Department of Civil and Environmental Engineering and Architecture**
 - Civil and Environmental Engineering
 - Urban and Regional Planning and Design
 - Architecture and Building Engineering
- **Department of Mechanical and Mathematical Engineering**
 - Mechanical Engineering
 - Mechanical Systems
 - Applied Mathematics
- **Department of Computer Science and Electrical Engineering**
 - Electrical Engineering
 - Electronic Engineering
 - Computer Science
- **Department of Materials Science and Applied Chemistry**
 - Chemistry and Bioscience
 - Chemistry and Materials
 - Materials Science and Engineering

Faculty of Engineering

The origin of the Faculty of Engineering was the Department of Engineering of the Fifth High School, which was established in 1897. Since then, the university has turned out more than 30,000 alumni who are working actively all around the world. Thanks to an existing alumni network, graduates have been able to find work with many quality companies. Many other students choose to continue their education in a master's program after they graduate. The goals of the Faculty of Engineering are two-fold. First, it aims to contribute to the well-being of humankind and the development of society by creating the technology to help society coexist with the global environment. The second aim is to foster people with a rich sense of humanity who can contribute to the global and local communities by looking at things from a global point of view.

■ Institution ■

Engineering Research Equipment Center

Various measuring and testing instruments (LVP-SEM, XRD, ESCA, etc. - about 20 models) are made available for advanced experiments and research by allowing their shared use.

Education Center for Global Human Resources in Engineering

At this center, basic courses (basic engineering, engineering English, COC), fundamental department courses, and sub-education programs (creative engineering and design, global extension, regional revitalization, disaster prevention and mitigation, etc.) are offered to all departments of the Faculty of Engineering.

URL: <https://www.eng.kumamoto-u.ac.jp/english/>



■ **Faculty of Advanced Science and Technology (FAST)**

Keeping with the trend towards placing priority on graduate school education, and following the establishment of the Faculty of Life Sciences, the Graduate School of Science and Technology was reorganized in April 2016 and the Faculty of Advanced Science and Technology (the organization that the faculty members belong to) was established. Pursuant to this change, the Faculty is responsible for organizational management and the Graduate School is responsible for graduate school education.

The Faculty of Advanced Science and Technology consists of 5 divisions: Natural Science, Materials Science and Chemistry, Industrial Fundamentals, Informatics and Energy, and Social Infrastructure and Environment. There are a total of 32 research fields under these 5 divisions. The Faculty aims to promote advanced natural sciences that will contribute to our coexistence with the global environment and to the sustainable development of society. The Faculty also aims to create an academic hub for advanced research in applied technologies. Through close cooperation between scientific and engineering departments, we launched this new organization system to promote unique and advanced research and applied research that will respond to social needs. We will endeavor to deepen scientific technology in a comprehensive manner, create new scientific technologies, and promote individualization of the graduate school.

■ **Institution** ■

Innovative Research and Education Center for Engineers in Kumamoto University

The center provides access to equipment mainly in the field of engineering via web-based databases to support the research and education. Although the center itself has no equipment, Engineering Research Equipment Center, Central Factory of the Faculty of Engineering and Kurokami Radio-isotope Laboratory manage equipment and collaborate with the Center to provide open access for all faculties of Kumamoto University and some facilities already open to the local community.

URL: <https://www.fast.kumamoto-u.ac.jp/en/home/>



■ Graduate School of Science and Technology (GSST)

After restructuring in 2006, the Graduate School of Science and Technology became a new research graduate school to conduct post-graduate education with a strong focus on research. GSST now covers 5 departments in the Master's Course and 2 departments in the Doctoral Course. With rapid globalization in international communities, it has become vitally important to promote international collaboration with overseas universities, both in research and education, as well as collaboration with graduate schools, industry and government institutions in Japan, to be able to provide an international and interdisciplinary environment for the students.

We are committed to fostering students who can approach problems arising out of a wide range of complex issues with leadership and creativity, and to making GSST an international institution marked by the active creation of knowledge and the free exchange of ideas.

URL: <https://www.fast.kumamoto-u.ac.jp/gsst-en/>

■ Institution ■

Global Joint Education Center for Science and Technology (GJEC)

For the future of graduate education, we need to promote globalization and to foster individuals with greater innovation skills through science and technology. To achieve this goal, it is vital that students add depth to their basic skills in their field of specialization and that their innovative skills are applied with a wider vision. The Global Joint Education Center for Science and Technology (GJEC) was established in GSST in April 2007, and allows students to take courses in different fields to develop innovation skills. In GJEC, we also provide Advanced General Education subjects. These subjects provide students with a broad knowledge of topics across the fields of science and technology, and enhance their application of future academic skills in society.

Master's Course

Department of Science	Mathematics
	Physics
	Chemistry
	Earth and Environmental Sciences
	Biological Sciences
Department of Civil and Environmental Engineering and Architecture	Civil and Environmental Engineering
	Urban and Regional Planning and Design
	Architecture and Building Engineering
Department of Mechanical and Mathematical Engineering	Mechanical Engineering
	Mechanical Systems
	Applied Mathematics
Department of Computer Science and Electrical Engineering	Electrical Engineering
	Electronic Engineering
	Computer Science
Department of Materials Science and Applied Chemistry	Chemistry and Bioscience
	Chemistry and Materials
	Materials Science and Engineering

Doctoral Course

Department of Science	Mathematics
	Physics
	Chemistry
	Earth and Environmental Sciences
	Biological Sciences
Department of Advanced Industrial Science	Environmental Conservation Engineering
	Environmental Management and Planning
	Architecture and Environment Planning
	Building Materials and Structures
	Advanced Mechanical Systems
	Intelligent Mechanical Systems
	Applied Mathematics
	Computer Science and Communication Engineering
	Frontier Technology for Energy and Devices
	Human and Environmental Informatics
	Applied Chemistry and Biochemistry
	Materials Science and Engineering



School of Medicine

■ School of Medicine

Subjects ➔ Molecular and Cellular Biology, Molecular Genetics, Anatomy and Histology, Physiology and Biochemistry, Microbiology and Immunology, Pathology and Pharmacology, Social and Environmental Medicine, Internal Medicine, Surgery, Developmental Medicine, Bioethics, Sensory and Motor Medicine, Clinical Neurology and Psychiatry, Integrated Medicine

■ School of Health Sciences

Courses ➔ Course of Nursing, Course of Radiological Sciences, Course of Medical Laboratory Sciences

Graduate School of Medical Sciences

■ Master's Course

Medical Sciences

■ Doctoral Course

Medical Sciences

Graduate School of Health Sciences

■ Master's Course

Nursing, Radiological Sciences, Medical Laboratory Sciences

■ Doctoral Course

Nursing, Radiological Sciences, Medical Laboratory Sciences

School of Medicine

The School of Medicine comprises the two subschools: the six-year School of Medicine and four-year School of Health Sciences. Graduates from the former become medical physicians after passing the National Examination for Medical Practitioners, while graduates from the latter become nurses, radiological technicians, and clinical technologists after passing the national examination for their specialty.

The School of Medicine has produced over 10,000 graduates since it was established as the independent Kumamoto Medical School in 1896. Specialized instruction in the field of medicine is conducted by faculty members of Medical and Life Sciences. The medical school constructs a curriculum framework that mostly reflects actual medical research and medical care. The curriculum focuses on fostering medical doctors who acquire a high level of personal communication skills. The Center for Medical Education and Research was founded in October 2010 to promote a particular mission for education of medical professionals. This Education Center carries out the research on educational systems, the curriculum reform of medical school, and education of clinical medicine and practical techniques, etc.

The School of Health Sciences was reorganized and established in October 2003 from the College of Allied Health Science (which includes the advanced course for Midwifery) and Nursing teacher training course of Faculty of Education. The school aims to provide a spiritually rich education based on respect for life and humanity, along with a high level of specialized knowledge, and is cultivating medical staff, researchers, and educators that are highly qualified to be able to contribute to many facets of society as members of medical teams.

URL: <http://www.medphas.kumamoto-u.ac.jp/en/medical/index.html>

Graduate School of Medical Sciences

The Graduate School of Medical Sciences was remodeled and established in April 2003 as a graduate school educational institution with the aim of cultivating medical researchers, educators, and advanced medical staff.

The graduate school consists of a four-year doctoral course and a two-year master's course that was established in 2002. The master's course (in Medical Sciences) was created in response to the upsurge in medical and biological research, as well as societal needs. The course is designed for graduates of 4-year undergraduate programs. Each academic year sees 20 students enrolled, for a total of 40 students. Graduates of the master's course are encouraged to continue their education by enrolling in the doctoral course. The doctoral course (Medical Sciences specialty) contains 88 students per academic grade, for a total of 352 students. Personalized education with research guidance is supplemented by courses in experimental medicine and graduate school seminars. Students complete the course by publishing their original research results in an international academic journal and writing a comprehensive thesis.

The graduate school has many special courses and programs such as a course for researchers of developmental biology and regenerative medicine, a cancer professional training program, a program for experts of metabolism, circulation and related informatics, an educational program for advanced research in infectious disease and AIDS, a HIGO program, Kumamoto University program for Leading Graduate School, and Shibasaburo program, a unique MD/PhD course. The school has concluded the academic exchange agreement including double degree program with many universities overseas.

All courses are taught by instructors who belong to approximately 90 diverse research areas and medical care fields from the following: the Faculty of Life Sciences, Kumamoto University Hospital, the Health Care Center, the Institute of Resource Development and Analysis, the Joint Research Center for Human Retrovirus Infection, the Institute of Molecular Embryology and Genetics, the International Research Center for Medical Sciences, and the Center for Metabolic Regulation of Healthy Aging.

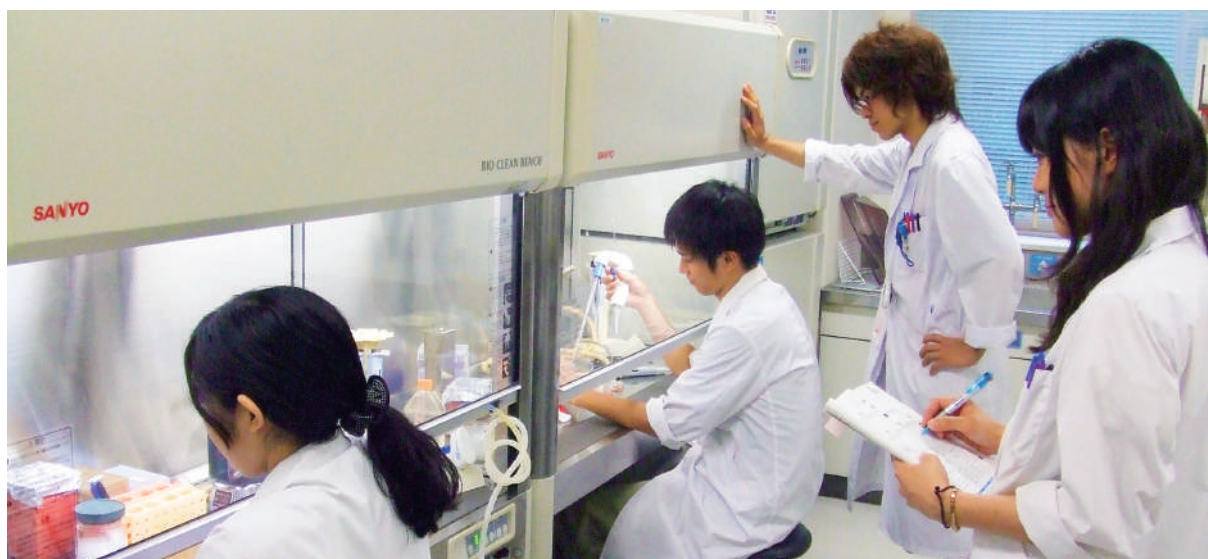
URL: <http://www.medphas.kumamoto-u.ac.jp/en/medgrad/>

Graduate School of Health Sciences

The Graduate School of Health Sciences was established in April 2008, and its doctoral program started in April 2010. The graduate school consists of the nursing course, the radiological sciences course and the medical laboratory sciences course. The school aims to foster specialists and produce researchers and educators who can incorporate a wide range of advanced medical knowledge to establish and develop the educational system of health sciences. Each department requires 2 years of study for the master's program and 3 years for the doctoral program. Each academic year of the master's program has room for a total of 24 students. Students can obtain a master's degree in either Health Sciences or Nursing.

Each academic year of the doctoral program is limited to 6 students. Conditions for completion of the doctoral program require a successful review of a doctoral thesis and a passing grade on the final examination. Students can obtain a doctor's degree in either Health Sciences or Nursing.

URL: <http://www.hs.kumamoto-u.ac.jp/en/>



School of Pharmacy

■ **Department**

School of Pharmacy, School of Pharmaceutical and Life Sciences

■ **Subject**

Molecular and Genomic Pharmacy, Medicinal Chemistry, Life and Environmental Sciences, Clinical Pharmacy, Biomedical Polymer Sciences, Drug Delivery Sciences

Graduate School of Pharmaceutical Sciences

■ **Master's Course**

Pharmaceutical and Life Sciences → Drug Delivery, Bio-Pharma, Medicinal Chemistry, Life Science

■ **Doctoral Course**

Clinical Pharmacy → Pharmaceutical Health Care and Sciences, Clinical Pharmaceutical Sciences

Pharmaceutical and Life Sciences → Drug Delivery, Bio-Pharma, Medicinal Chemistry, Life Science

School of Pharmacy

The School of Pharmacy is based upon the principle that the pharmaceutical sciences are the integrated science contributing greatly to human health through medication. Students acquire a basic knowledge relating to the development, production and management of pharmaceutical products, environmental and health science as well as many other skills required for pharmacists. The school aims to cultivate creative graduates with high pharmaceutical scientific and ethical abilities based on life sciences. The school conducts basic practical and clinical training together with modern lectures that focus on education, from the three perspectives of knowledge, technique, and bedside manner. After graduating, students go on to work in various fields, as pharmacists in hospitals, pharmacies, pharmaceutical and chemical companies or in government and other public facilities. However, over half of the graduates continue their education at graduate level to become either pharmaceutical researchers or advanced pharmacists.

In 2006, the pharmaceutical sciences course was split into the School of Pharmacy, a six-year course for the cultivation of pharmacists, and the School of Pharmaceutical and Life Sciences, a four-year course focusing on the training of researchers.

Graduate School of Pharmaceutical Sciences

The Graduate School of Pharmaceutical Sciences was established in April 2003 by partially integrating the faculties of the Institute of Molecular Embryology and Genetics (IMEG) and the Institute of Resource Development and Analysis (IRDA). This was preceded by the creation of the Faculty of Medical and Pharmaceutical Sciences. Thus, graduate students are educated by teaching staff from the Faculty of Life Sciences (founded in January 2010 by re-organizing the Faculty of Medical and Pharmaceutical Sciences), IMEG and IRDA. The school takes advantage of the strength of each faculty member to provide a great number of educational programs by combining pharmaceutical sciences and medical fields such as bioethics, genetics, embryology, cardiovascular, metabolism, and translational research. These unique educational programs further reinforce the foundation of basic pharmaceutical knowledge acquired during undergraduate studies.

The Graduate School aims to cultivate pharmaceutical researchers and advanced pharmaceutical specialists who can act independently and provide leadership in a wide variety of pharmaceutical fields involving the creation of medicinal products, biomedical research, and clinical/public health administration.

URL: <http://www.pharm.kumamoto-u.ac.jp/en/>



Faculty of Life Sciences

The explosive growth in life science research in recent years has caused the traditional boundaries between the fields of medical, health science and pharmaceutical research to be substantially diminished. Due to that, and to the striking development of research in the area of interdisciplinary studies, we are now in an era where the integration of these fields has become essential. In order to respond to these developments, the former Graduate Schools of Medical Sciences, of Pharmacy and of Health Sciences were integrated. As a result, a graduate school with a new system that has a separate research department (faculty-only organization) and education department (educational organization) was established in April 2003. The faculty of Life Sciences is composed of 3 divisions, 15 major departments, and 63 departments of research, and is one of the largest research-oriented organizations with medical, pharmaceutical and health science university staffs in Japan.

In the Division of Integrated Life Sciences, research is conducted with the aim of deepening the understanding of basic knowledge and theory in the fields of medicine, health science and pharmacy. In the Division of Advanced Biomedical Sciences, advanced research in the field of life sciences is conducted in such areas as transplantation therapy and new drug development. In the Division of Environmental and Sociomedical Sciences, along with scientific investigation of the link between both society and medicine/pharmacy as well as between disease and the environment, leading research related to life theory is conducted. The mission of the Faculty of Life Sciences is to contribute to the health and well-being of mankind through research and education related to life sciences and medical care.

URL:<http://www.medphas.kumamoto-u.ac.jp/en/faculty/index.html>

■ Institution ■

Southern Kyushu and Okinawa Unit Center of Japan Environment and Children's Study

Southern Kyushu and Okinawa Unit Center of Japan Environment and Children's Study was founded as a research institute in July 2010 under the Faculty of Life Sciences at Kumamoto University. Children are exposed to various environmental risks, such as natural and manmade chemicals and socio-economic factors. The Japanese government (Ministry of the Environment) established a birth cohort study in 2010 to understand the effects of children's environmental exposures and to explore ways to reduce children's risks from environmental exposures. The Unit Center collects data within the designated study regions, and investigates environmental factors that affect children's health and development.

Center for Metabolic Regulation of Healthy Aging

Japan is now a "super-aged" society, and the question of how to extend a healthy life expectancy has become a policy issue. On May 1, 2018, we launched a new Center for Metabolic Regulation of Healthy Aging (CMHA). CMHA comprises five divisions: (1) Metabolic and Circulatory Research, (2) Cancer and Stem Cell Research, (3) Nervous System, Sensory, and Locomotive Research, (4) Animal Models of Aging Research, and (5) Epidemiological Research. The goal of CMHA is to advance research on healthy aging, and train internationally competitive human resources in these fields.

Center for Medical Education and Research

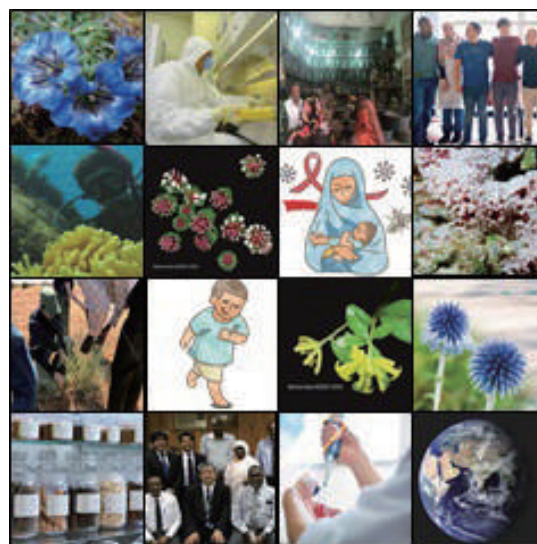
The Center for Medical Education and Research was founded in October 2010 to contribute to the training of medical professionals through research and practice in order to achieve its educational mission of fostering medical specialists. The Center carries out (i) research on building systems for the education of medical professionals, (ii) curriculum reform aligned with a new medical education system, (iii) instruction in clinical medicine via student participation and practice in clinical medicine and procedures, etc.



Global Center for Natural Resources Sciences (GCNRS)

The Global Center for Natural Resources Sciences (GCNRS) promotes natural product sciences and the UpRod project¹⁾ by utilizing a global research collaboration to improve lives and human health through developing innovative novel medicines. GCNRS will contribute to the development of human networks and resources related to the conservation of natural resources in different parts of the world. Furthermore, in cooperation with various related companies, this center will promote drug discovery research geared toward realizing the vision of a global society where natural ecosystems and human health are coordinated and harmonized.

¹⁾ UpRod project: In this project, we collect useful natural products that are not yet utilized around the world, extract active ingredients, and evaluate their pharmacological efficacy. We then select and optimize drug candidate compounds before we commercialize them.

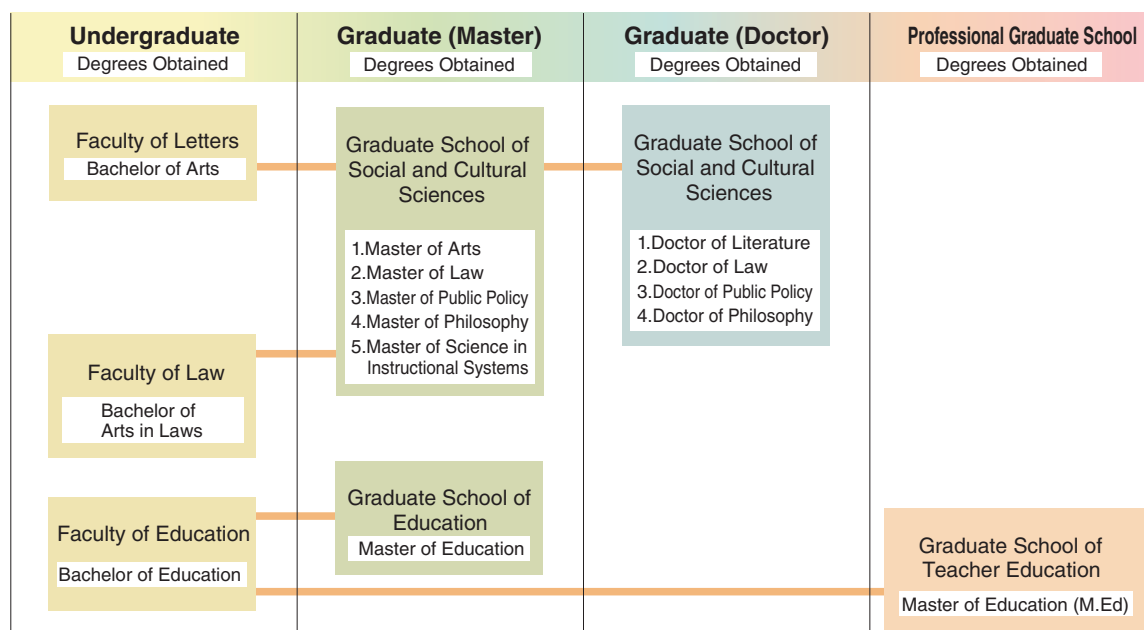


GCNRS

Global Center for Natural
Resources Sciences

UNDERGRADUATE AND GRADUATE COURSES

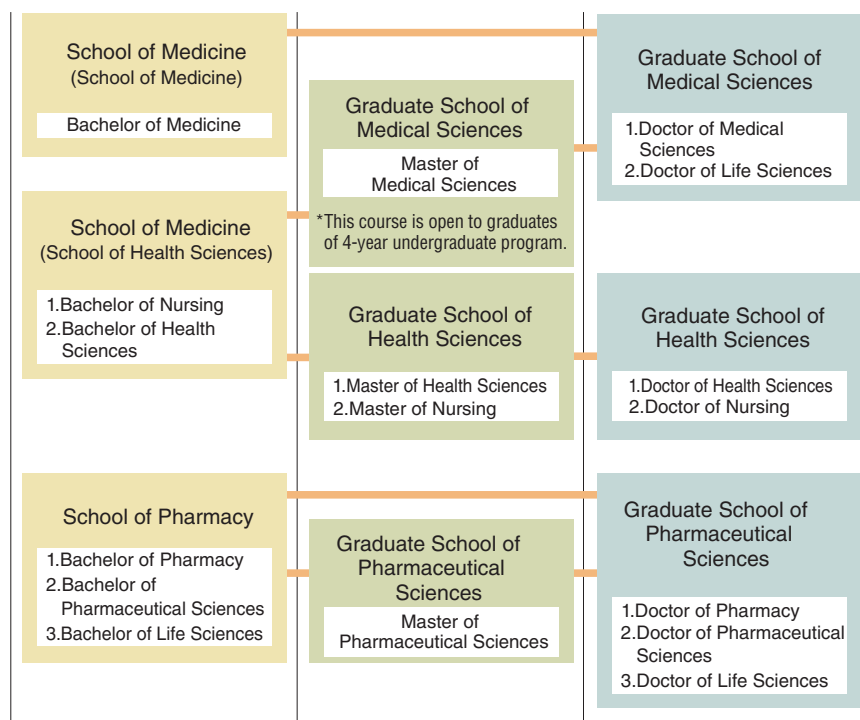
■ Humanities and Social Sciences ■



■ Science and Technology ■



■ Life Sciences ■



The above chart is an example of pursuing higher education between undergraduate and graduate courses, but is not comprehensive.

Centers and Institutes

Institute of Molecular Embryology and Genetics

発生医学研究所



The Institute of Molecular Embryology and Genetics aims to contribute to society by promoting the integration of life and medical sciences from the viewpoint of developmental biology. This institute was founded in 1992, and extensively reorganized in 2000 and 2009. It has three divisions (Developmental Regulation, Stem Cell Research, and Organogenesis) consisting of 12 laboratories. Our research interests include: epigenetics, chromosome and protein regulation, DNA damage and repair, intercellular communications, ES and iPS cells, mesenchymal stem cells, hematopoietic differentiation, gametogenesis, brain morphogenesis, muscle regeneration, and kidney development. The 21st Century Center-of-Excellence (COE) Program (2002-2006), followed by the global COE Program (2007-2011), promoted the outstanding research and educational activities in the Institute. In addition, the Center for Organ Regeneration Research was launched in 2012 to realize regenerative medicine through scientific collaborations with the University Hospital. Furthermore, the Institute is selected as one of the Joint Usage/Research Centers in Japan, and supports the research community.

URL: <http://www.imeg.kumamoto-u.ac.jp/en/>

Institute of Pulsed Power Science

パルスパワー科学研究所



Pulsed power is an instantaneous form of energy which, when temporally compressed, can exert a tremendous amount of electricity and power. In order to find solutions for various problems the international community is reaching for goals such as the realization of a society which is safe and secure, which fosters environmental protection and recycling, and which advances medicine and social welfare. We conduct development of pulsed power science and technology and work to resolve issues from the viewpoint of pulse power technology. In our international research environment, we produce global leaders with interdisciplinary skills. As a world-leading research center for pulsed power science and technology and related fields, and as an organization that will be at the global forefront in the creation of multidisciplinary human resources and innovation, we aim to grow as an institute that is a credit to Kumamoto, to Japan, and to the world.

URL: <http://www.ipps.kumamoto-u.ac.jp/index-e.html>

Priority Organization for Innovation and Excellence

大学院先導機構



The Priority Organization for Innovation and Excellence was established to contribute to the enhancement and development of educational research activities at Kumamoto University. It does so by enriching and improving the graduate schools, and by promoting the world's most advanced COE (Center of Excellence) Studies Program; a highly evaluated program that encompasses life science, natural science, social and cultural sciences and interdisciplinary, multiple, or new disciplines base on organic cooperation between the fundamental sciences and the applied sciences. This has brought the creation of the new COE, a new research center and several new graduate courses (majors).

URL: <http://poie.kumamoto-u.ac.jp/en/>

In 2014, Kumamoto University was chosen by the Ministry of Education, Culture, Sports, Science, and Technology (MEXT) as a member of the “Top Global University Project”, to be a leading model for university reform in Japan, cultivating global human resources leadership, and actively promoting globalization efforts at home and abroad.

The Organization for Globalization was established on March 1, 2015 to address university-wide globalization. The Organization for Globalization was reorganized to establish the vice president as Director in April, 2018, to further strengthen globalization efforts in Kumamoto University.

Headquarters for Admissions and Education

The Headquarters for Admissions and Education serves as a high governance organization to supervise quality control of higher education in Kumamoto University. Dealing with a changing entrance examination system and supporting students who are entering Kumamoto University during these changes, this organization constructs, supervises, and manages educational programs based on the analyses of enormous volume of educational data and in accordance with the vision, policy and strategy of the university as a core organization.

■ Mathematical Science Education Center ■

The Mathematical Science Education Center (MSEC) in the Headquarters for Admissions and Education was established in January 2019 with the aim of promoting and enhancing mathematical science education including data science. MSEC also aims to enhance mathematical science education in Kumamoto by cooperating with regional universities, technical colleges, and high schools. In order to achieve these goals, MSEC improves teaching methods in Kumamoto University and prepares effective teaching materials related to mathematics and data science.

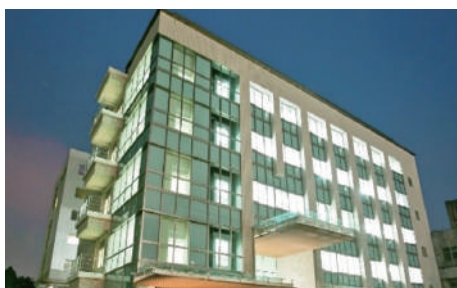
■ College of Cross-Cultural and Multidisciplinary Studies ■



The College of Cross-Cultural and Multidisciplinary studies in the Headquarters for Admissions and Education has two differently functioning divisions aimed at realizing Kumamoto University's Top Global University Project: The “Division for Open Global Education” and the “Division for Japanese Language Education”. The College of Cross-Cultural and Multidisciplinary Studies will foster and expand a variety of measures, such as the provision of global subjects, the enhancement of Japanese language and culture education, and providing cooperative learning between high schools and the university, in addition to connecting with the local community and local businesses.

URL: <http://www.c3.kumamoto-u.ac.jp/en/>

International Research Center for Medical Sciences (IRCMS)



The International Research Center for Medical Sciences (IRCMS) was launched as the managing organization in April of 2015 to oversee Kumamoto University's Center of Excellence for world-class research in the life sciences. The center partners with other life science institutes in Kumamoto University to promote collaborative international research with distinguished research institutes overseas, and scouts and trains young investigators who contribute to ground-breaking discoveries in the medical sciences.

The center aims for 50% foreign researcher population, including Ph.D. graduate students. To reach this goal, the research environment within the IRCMS is equivalent to world-class research institutes found in western countries, and makes provisions for smooth international research collaborations.

The center has designated English as the official language, and features an open lab layout with few walls and partitions between labs to facilitate communication among scientists. It is expected that this will promote fusion research between the various fields within the institute.

URL: <http://ircms.kumamoto-u.ac.jp/>

International Research Organization for Advanced Science and Technology (IROAST) 国際先端科学技術研究機構



The International Research Organization for Advanced Science and Technology (IROAST), established April 2016, is a Center of Excellence in Kumamoto University that promotes world-class, cutting-edge research in science and technology. Featuring a standardized international research environment with several established global collaborations, the Organization utilizes a tenure-track personnel system.

IROAST encourages development of international collaboration to establish international research networks, recruit and develop excellent young researchers, promote ongoing leading-edge research, and initiate innovative interdisciplinary research projects. The Organization focuses on four areas of science and technology; Nanomaterial Science, Green Energy, Environmental Science, and Advanced Green Bio. IROAST aims to create robust international research networks of excellent overseas researchers and institutions, ultimately to be a prominent global hub of cutting-edge research.

URL: <http://iroast.kumamoto-u.ac.jp/>

Center for Management of Information Technologies

総合情報統括センター



The Center for Management of Information Technologies was established as the central organization to integrate the university computer systems and info-communication networks organically. Our mission is to develop education and research at Kumamoto University through information technology. To achieve the mission, we conduct research on information processing, support information-related research, and provide education on information literacy. We also provide, operate, and maintain computers and network equipment in our university.

URL: <http://www.cc.kumamoto-u.ac.jp/en/>

Kumamoto Innovative Development Organization (KIDO)

熊本創生推進機構



Kumamoto Innovative Development Organization (KIDO) was established on April 1st, 2017 with the aim of contributing to development of Kumamoto region. In April, 2018, KIDO was reorganized as a unified consulting department which proposes solutions systematically and strategically to the regional needs and issues in Kumamoto. KIDO has been working actively in the fields of industrial promotion, employment creation, reconstruction from the Kumamoto earthquake in 2016, local problem solving and developing local-oriented human resources.

URL: https://www.kumamoto-u.ac.jp/kenkyuu_sangakurenkei/sangakurenkei/kico

Research Center for Instructional Systems

教授システム学研究センター

RCiS, the Research Center for Instructional Systems, consists of three research departments and one operations department. The research departments aim to make RCiS a world-leading research center for instructional systems. The operations department is leLD, the Institute for e-Learning Development. RCiS is distinctive in that it offers practical fields inside and outside Kumamoto University, and is developing research on both higher education and vocational education. RCiS, as the first research center in Japan for Instructional Systems, manifests the belief, "When it comes to Instructional Systems or Instructional Design, there's no institution like Kumamoto University." RCiS works in close cooperation with research centers inside and outside Japan. It develops instructional systems and contributes to society through joint research with associate research institutions, which include corporations and higher education institutions, and with associate researchers consisting of graduates of the Graduate School of Instructional Systems in Kumamoto University and elsewhere.

URL: <http://www.gsis.kumamoto-u.ac.jp/en/rcis-2/>

Eisei-Bunko Research Center

永青文庫研究センター



The Eisei-Bunko Research Center was established by the Inter-Department Institutes for Education and Research in April 2017. Its purpose is to help us develop our research on the basis of the results of study and philanthropy. The Eisei-Bunko Research Center is attached to the Faculty of Letters, which was established in 2009.

Research is focused on documents related to the Kumamoto Domain, the Eisei-Bunko Collection. This collection is currently housed at Kumamoto University, and the documents are among the most detailed and extensive daimyo documents available, both in terms of quality and quantity. This is a priority area for research and philanthropy unique to Kumamoto University.

Through the general study of the Eisei-Bunko Collection and other documents, the Eisei-Bunko Research Center has organized a solid base for research. The Center also gives back results from its studies to the community through cooperation with cultural administrative organizations. At the same time, we help with the development of human resources who can contribute to the promotion of culture and research with a focus on the humanities and social sciences.

URL: <http://eisei.kumamoto-u.ac.jp/en/>

Center for Water Cycle, Marine Environment, and Disaster Management (CWMD) くまもと水循環・減災研究教育センター

The Center for Water Cycle, Marine Environment, and Disaster Management (CWMD) was established in April 2017. CWMD consists of four laboratories namely: Water Resource Research Laboratory; Marine Science Laboratory; Disaster Mitigation Laboratory and Urban and Regional Design Laboratory. This center leads research and education in the area of groundwater resources in Kumamoto, marine environment around the Ariake Sea and the Yatsushiro Sea, disaster mitigation, and community design and participation.

◆ Water Resource Research Laboratory

Aims to perpetuate the water cycle on the groundwater resource through various research and academic efforts.

◆ Marine Science Laboratory

Carries out the research on biodiversity and ecosystems, sustainable development and conservation of marine resources, analysis of environmental changes of the seabed in the coastal areas.

◆ Disaster Mitigation Laboratory

Promotes a wide range of research and education in disaster prevention and reduction activities to develop and sustain a disaster resilient society.

◆ Urban and Regional Design Laboratory

Works on the development of design and implementation towards a livable, resilient and sustainable region with community and citizens' active participation.

URL: <https://cwmd.kumamoto-u.ac.jp/en/>

■ Aitsu Marine Station ■

合津マリンステーション

Aitsu Marine Station faces the sea just at the border of the Ariake Sea and Yatsushiro Sea, an area where the difference between extremes of ebb and flow is over 5 meters. No other marine station in Japan is situated near such a large ebb and flow difference. Aitsu Marine Station is always staffed by three staff members who specialize in bioresource and biodiversity analysis and conduct training and research. The station has 3 buildings: a 3-story dormitory for researchers (589 m²), a 2-story building for practical study (785 m²), and a 1-story building for culture. There are 2 boats: the Dolphin Super Challenger and Shiranuhi.

The Memorial Museum of the Fifth High School

五高記念館



Photograph by Toru Sakamoto

※It is currently closed because of Kumamoto earthquake in 2016

The Memorial Museum of the Fifth High School is composed of two historic buildings which have been designated as Important Cultural Properties, the main building of the Fifth High School and the Chemical Laboratory. It contains exhibits of historical documents relating to higher education and activities of the Fifth High School along with other relevant artifacts. In addition to these standing exhibits, the Memorial Museum of the Fifth High School offers lectures, lessons on cultural themes, experiential learning meetings, as well as concerts. In addition, the museum serves as a training center for the museum curator training course at Kumamoto University, and also offers reference services. The support of lifelong learning and community activities are central to the mission of the Memorial Museum of the Fifth High School.

URL: <http://www.goko.kumamoto-u.ac.jp/en/>

Magnesium Research Center (MRC)

先進マグネシウム国際研究センター



For many years, there has been a strong demand in the transportation industry, including automotive, rail and aerospace, for ways to reduce the weight of structural components, in order to reduce both energy consumption and CO₂ emissions. Magnesium is the lightest known structural metal and magnesium alloys are increasingly being used in a wide range of applications for both structural and functional benefits. The Magnesium Research Center (MRC) at Kumamoto University, established in December 2011, has engaged in and dedicated to a variety of magnesium-related research areas. They include alloy and process design, microstructure analysis, mechanical property characterization, corrosion, surface protection and recycling.

MRC has also developed an international magnesium research network. MRC has three missions: 1) to provide state-of-the-art research and education, 2) to develop a global research network, and 3) to promote international research collaboration.

URL: <http://www.mrc.kumamoto-u.ac.jp/en/>

Institute of Resource Development and Analysis

生命資源研究・支援センター



The Institute of Resource Development and Analysis (IRDA) was established for the purpose of promoting comprehensive education and research in various scientific areas by providing diverse research resources and information. Two major objectives of the IRDA are: 1) Production, development, preservation, and supply of experimental animals, including genetically engineered animals, and construction and analysis of databases using advanced bioinformatics, and phenotype analysis. 2) Research, education, enlightenment, data management and technical support for experiments using animals, genetic materials and radioisotopes.

URL: <http://irda.kuma-u.jp/en/index.html>

Joint Research Center for Human Retrovirus Infection

ヒトレトロウイルス学共同研究センター



Since merging on April 1, 2019, Center for AIDS Research in Kumamoto University and Center for Chronic Viral Diseases in Kagoshima University have integrated to create the Joint Research Center for Human Retrovirus Infection. Such an inter-university research center between the National University Corporations is a pioneering enterprise in Japan. Our center focuses on the prevention and eradication of human retroviruses, the latency of which has made it a challenging global health problem. To this end, we promote worldwide research/education based on our research achievements regarding the pathogenesis of human retroviruses. We also further

develop our strengths (AIDS Research in Kumamoto campus and HTLV-1/HBV research in Kagoshima campus) by utilizing economies of scale and our parental center resources, clarifying our goals, educating the next generation of researchers, and extending our competitive edge in the world.

University Archives

文書館

The University Archives was established on April 1, 2016. Our aim is to collect, preserve and provide access to materials for research about: 1) the history of Kumamoto University, 2) Kumamoto local history and culture, 3) social problems that occurred in the Kumamoto area, such as Minamata disease, Menda incident and leprosy (Hansen's disease). We publish inventories of these collections on our website for research inside and outside the University.

<http://archives.kumamoto-u.ac.jp/>

Environmental Safety Center

環境安全センター



The Environmental Safety Center was established in 2001 to manage environment and safety issues at the university and its surroundings. The center aims to maintain a satisfactory setting for students studying at the university as well as ensure the safety of its staff and students, and in doing so, contribute to the overall promotion of education and research.

The main services of the center are : 1) Safety management and environmental conservation, including chemical management, for students studying at the university, as well as all related education and awareness services. 2) Services related to proper management and disposal of waste products. 3) Services related to environmental measurements such as water quality and atmospheric tests.

URL: <http://www.esc.kumamoto-u.ac.jp/en/>

Research Center for Buried Cultural Properties

埋蔵文化財調査センター



Photo:
Potteries excavated from the ruins of the campus (1600 years ago)

The eight campuses of this university are built on top of some of the most famous remains from the Jomon period down to modern times (Kurokamimachi, Honjo, Oe sites among others) in Kumamoto prefecture. Therefore, whenever it is inevitable to dig into the ground for maintenance of the facilities of the campuses (construction or repair of buildings, infrastructure), archaeological excavations are carried out in order to save the remains. This center emerged as one of the Inter-Department Institutes for Education and Research in October 2011 from the Research Office for Buried Cultural Properties, which undertook excavations since 1994. The center's objectives are documentation, preservation and practical use of the excavated cultural properties (sites and finds). Excavation results are presented to the public in annual and other reports, and visitors are always welcome to study the original finds.

URL: <http://ewww.kumamoto-u.ac.jp/dept/maibun/>

Health Care Center

保健センター



The Health Care Center is located on the Kurokami North Campus. Three physicians, one clinical psychotherapist, one campus social worker and two nurses are available during normal school hours for consultation and treatment. Health Care Center provides help in resolving the various troubles, concerns, worries, and illness that can occur during college life. The service is free to all members of the university community.

URL: <http://hcc.kumamoto-u.ac.jp/english/>

Student Accessibility Support Room

障がい学生支援室

The Student Accessibility Support Room was established to enhance the support system for students with disabilities and to contribute to their unimpeded education along with the enactment of the Act on the Elimination of Disability Discrimination of April 2016. The room facilitates consultations for students with disabilities and provides them with both a reasonable accommodation and support adapted to individual needs.

URL: <https://sien.kumamoto-u.ac.jp/en/>

Institutional Research Office

大学情報分析室

The Office of Institutional Research (IR), was established in July 2014 to support decision-making by providing information on university administration, assessment and evaluation activities and evaluation activities as well as promote of use of information.

The IR is chaired by faculty staff and officers. Currently, there is a vice president, 3 faculty staff, 15 management staff and 4 URA members of the IR office. And an IR office adviser gives overall advice about our activities.

Our main work is collecting, investigating and analyzing university data. To enable data is available, visible, and can be analyzed, we constructed a database system using BI tools named "KU-RESAS."

The data was obtained from Kumamoto University work systems such as SOSEKI (administration of education), ASO (visualization of GPA and effect of education), UPDS (management of employee and salary) and COMET (management of entrance examination). We categorized these data into education, research, social contributions, international relations and administrative foundations.

We combine these data for different purposes, such as to find relationships between education and research, for example.

Additionally, we collect other university data such as university ranking data in order to measure and compare performance. Such activities are the means by which we contribute to university development.

Campus Design Office

キャンパス整備戦略室



The Campus Design Office was established in November 2018 to plan facilities and an environment with a long-term perspective toward ensuring the university's facilities operate effectively and efficiently. The office utilizes a top down facility management system to manage the whole university system. It consists of three departments (Facility Management Department, Energy Management Department, and Environmental Management Department) in order to respond flexibly to situational changes in the future. The Office manager and Department head are appointed by the faculty of engineering to encourage collaboration among faculty and administrative staff members.

LOCAL AND OVERSEAS OFFICES

Local Offices

Kumamoto University Tokyo Office

東京オフィス

Established: April 2004

- Scope:
1. Provides support for university-industry collaborations
 2. Offers information regarding the educational research activities of KU to businesses, the government, and other public offices and organizations
 3. Offers information regarding entrance exams to prospective students, and provides support to KU students who are seeking jobs
 4. Collaborates with alumni associations
 5. Conducts seminars and organizes various gatherings



Kumamoto University Kansai Office

関西オフィス

Established: December 2011

- Scope:
1. Provides support for university-industry collaborations
 2. Offers information regarding the educational research activities of KU to businesses, the government, and other public offices and organizations
 3. Offers information regarding entrance exams to prospective students, and provides support to KU students who are seeking jobs
 4. Collaborates with alumni associations
 5. Conducts seminars and organizes various gatherings



Kumamoto University Kansai Liaison Office

関西リエゾンオフィス

Established: October 2009

- Scope:
1. Promotes collaboration with industry and government offices in the Kansai region, and promotes technology transfers
 2. Provides technical consultation, and conducts meetings and collaborative research gatherings
 3. Exhibits research processes and engages in public relations activities
 4. Distributes pamphlets and provides information about the entrance exams of KU, and assists students in finding jobs
 5. Collaborates with alumni associations
 6. Conducts seminars and other gatherings

Address: South Facility #2203, Creation Core Higashi Osaka 1-4-1 Aramoto Kita, Higashi Osaka City, Osaka 577-0011, Japan
E-mail: sangaku-somu@jimu.kumamoto-u.ac.jp



Overseas Offices

Kumamoto University Liaison Office at KAIST

韓国KAISTオフィス

Established: September 2008

- Scope:
1. Promotes research collaboration
 2. Supports the joint symposiums of KU and KAIST
 3. Provides information about KU and its entrance exams, and assists with public relations activities

Address: KAIST Biomedical Research Center 291 Daehak-ro (373-1 Guseong-dong), Yuseong-gu, Daejeon 305-701, Korea



Kumamoto University Liaison Office at ITS

インドネシアITSオフィス

Established: April 2010

- Scope:
1. Promotes academic and student exchanges with partner institutions
 2. Cultivates Indonesian students who are interested in studying at KU, and assists students who are preparing to come to KU to study
 3. Promotes international collaboration of the university, industry and government
 4. Provides information about KU and its entrance exams, and assists with public relations activities
 5. Supports alumni activities

Address: ITS International Office Gedung Rektorat Lantai 1 Kampus ITS Keputih-Sukilo Surabaya Jawa Timur, 60111, Indonesia
TEL: +62-31-596-6985 E-mail: mia.hernawati.sby@gmail.com



Kumamoto University Dalian Office

大連オフィス

Established: March 2011

- Scope:
1. Provides information regarding Japan and KU to students and the faculty of Dalian University of Technology and partner institutions in northern China
 2. Builds networks of alumni and other relevant people in northern China
 3. Strengthens the relationship with other partner institutions in northern China
 4. Promotes KU's various activities in northern China

Address: Room 106, Bldg. B, No. 80 Software Park Rd, Dalian 116024, China
TEL: +86-411-8470-2983



Kumamoto University Sudan Office

スーダンオフィス

Established: June 2016

- Scope:
1. Service as a base of research and educational exchange in Africa
 2. The dissemination of information on Japan and Kumamoto University to students and academic staff of exchange partner universities in Africa
 3. The establishment of a network of alumni and similar groups and persons in Africa
 4. Service as a base of Kumamoto University's activities in Africa

Address: Faculty of Pharmacy, University of Khartoum. P.O. Box: 1996, Al-Qasr street, Khartoum 11111, Sudan



Six National Universities Network (SUN) Changchun Joint Office

国立六大学長春共同事務所

As a first joint office of Six National Universities Network (SUN) which consists of Chiba University, Niigata University, Kanazawa University, Okayama University, Nagasaki University and Kumamoto University.

Established: November 2014

- Scope:
1. Provides information regarding Japan and SUN to students and the faculty of partner institutions in northeastern China
 2. Builds networks of alumni and other relevant people in northeastern China
 3. Strengthens the relationship with other partner institutions in northeastern China
 4. Promotes SUN's various activities in northeastern China

Address: Jingyue Campus of Northeast Normal University, Changchun, Jilin, China
TEL: +86-155-4328-8200



Six National Universities Network (SUN) European Platform of SixERS

国立六大学欧州事務所

Established as a joint office of six national universities (Chiba Univ., Niigata Univ., Kanazawa Univ., Okayama Univ., Nagasaki Univ. and Kumamoto Univ.)

Established: August 2016

- Scope:
1. The dissemination of information on academic and cultural ties between Japan and the Netherlands
 2. The promotion of partnerships with inter-university networks and international joint educational platforms in the Netherlands and EU
 3. The collection of information on local universities
 4. The dissemination of information on Japan and the six national universities to students and academic staff of local universities
 5. The implementation and operation of six national university joint programs

Address: SieboldHuis 5th floor, Rapenburg 19, 2311 GE Leiden, The Netherlands



Six National Universities Network (SUN) Bangkok Office of AP-Six ERS

国立六大学バンコク事務所

Established as the joint office of six national universities (Chiba Univ., Niigata Univ., Kanazawa Univ., Okayama Univ., Nagasaki Univ. and Kumamoto Univ.)

Established: July 2017

- Scope:
1. Joint implementation of student exchange programs in Thailand and other ASEAN countries
 2. Dissemination of information on Japan and the six universities to students and academic staff in Thailand and other ASEAN countries
 3. Promotion of international industry-academia-government collaborative programs in Thailand and other ASEAN countries
 4. Promotion of exchanges with ASEAN University Network (AUN) member universities

Address: KMUTT Knowledge Exchange for Innovation Center (KX) 12F
110/1 Krung Thonburi Road, Banglamphulung,
Khlongsan, Bangkok 10600, Thailand



Kumamoto University Liaison Office at STUST

台湾南台オフィス

Established: March 2019

- Scope:
1. Promotes academic and student exchanges with partner institutions in Taiwan
 2. Promotes international collaboration with partner institutions in Taiwan
 3. Provides information on Japan and KU to academic and students in Taiwan
 4. Strengthens networks of alumni and relevant affiliates in Taiwan
 5. Supports other international engagements of KU in Taiwan

Address: Southern Taiwan University of Science and Technology (STUST) Office of International Affairs (W804), No. 1, Nan-Tai Street, Yongkang Dist., Tainan City 71005, Taiwan R.O.C





University Hospital

■ Division of Internal Medicine

Respiratory Medicine, Gastroenterology and Hepatology, Hematology, Rheumatology and Clinical Immunology, Nephrology and Hypertension, Diabetes, Metabolism and Endocrinology, Cardiovascular Medicine, Neurology

■ Division of Surgery

Cardiovascular Surgery, Thoracic Surgery, Gastroenterological Surgery, Breast and Endocrine Surgery, Pediatric Surgery, Transplantation, Urology, Gynecology

■ Division of Child Health and Development

Pediatrics, Obstetrics

■ Division of Sensory and Motor Organs

Orthopaedic Surgery, Dermatology, Plastic and Reconstructive Surgery, Ophthalmology, Otolaryngology-Head and Neck Surgery, Oral and Maxillofacial surgery

■ Division of Radiology

Diagnostic Imaging and Interventional Radiology, Radiation Oncology

■ Division of Anesthesia, Neurosurgery and Psychiatry

Neuropsychiatry, Neurosurgery, Anesthesia

■ Departments

Laboratory Medicine, Surgical Center, Central Radiology, Intensive Care Unit, Central Medical Supply, Rehabilitation, Surgical Pathology, Transfusion Medicine and Cell Therapy, Emergency and General Medicine, Infectious Diseases, Dialysis Center, Endoscopic Diagnostics and Therapeutics, Department of General Clinical Investigation, Department of Medical Informatics and Administrative Planning, Pharmacy, Nursing, Medical Technology, Department of Clinical Nutrition, Department of Medical Quality and Safety Management, Department of Infection Prevention and Control, Administration

■ Centers

Comprehensive Clinical Education, Training and Development Center, Innovation Center for Translational Research, Medical Liaison Center, Perinatal Medical Center, Cancer Center, Medical Engineering Center, Regional Medical Support Center, Transplantation Center, Disaster Medical Education and Research Center

The hospital is home to a diagnosis and treatment department, pharmacy, and nursing department as well as central medical facilities, with 848 beds on inpatient floors (798 general wing beds, and 50 psychiatric wing beds), and provides medical care to over an average of 1,500 outpatients per day.

In light of the importance of hospitals under university corporate management, the positioning of the hospital within its organization was changed from "medical school-affiliated hospital" to "university-affiliated hospital," and the hospital name from "Kumamoto University School of Medicine Hospital" to "Kumamoto University Hospital" on April 1, 2019.

Now, plans to finish redeveloping the hospital into one that carries into 21st century medicine and medical care have reached the final stages in rebuilding a series of wards, with outpatient clinics to be opened in September 2014, creating a comfortable and safe environment in which to provide high-quality medical and nursing care.

The hospital works to improve the standard of medical practice in the region of Kumamoto prefecture as both a prefecture-designated cancer treatment core hospital and liver disease treatment core hospital, and is the only advanced treatment hospital in Kumamoto Prefecture.

Mission

Through advanced medical safety management, Kumamoto University Hospital practices "patient first" medical care, is dedicated to medical development and educating medical professionals, and contributes to the health and welfare of its community.

Vision

- ◆ We provide safe, reliable, and high-quality medical services thanks to our advanced medical safety management systems
- ◆ We are dedicated to excellence in patient care for respecting patient's wishes, anticipations and requests
- ◆ We develop and promote advanced medical care and educate outstanding medical professionals
- ◆ We contribute to local community by acting as a base for medicine and disaster prevention

Patient Rights

- ◆ We respect your personal wishes and dignity.
- ◆ You have the right to fair, quality medical care.
- ◆ You have the right to receive adequate explanation and information.
- ◆ You may choose medical care according to your own wishes.
- ◆ Your privacy and personal information will be protected.

Patient Responsibilities

- ◆ Please give us an accurate description of your health condition.
- ◆ Please participate actively in medical treatment.
- ◆ Please follow social rules and our hospital's regulations.
- ◆ Do not cause trouble for others.
- ◆ Please pay your medical fees on time.

URL: <http://www.kuh.kumamoto-u.ac.jp/en/index.html>



The University Library is composed of the Central Library, the Medical Library and the Pharmacy Library. It provides information resources and services to support the University's educational and research activities. The Central Library is open from 8:40 a.m. to 10:00 p.m. from Monday to Friday, and 12:00 p.m. to 6:00 p.m. on Saturdays and Sundays. (except for the vacations)

Library Holdings (As of March 31st, 2019)

	Books	Periodicals
Central Library	1,045,939	14,993
Medical Library	172,500	5,308
Pharmacy Library	39,482	1,034
Total	1,257,921	21,335

Special Collections of Books and Manuscripts

1. The Aso Manuscript Collection

This impressive collection of historical documents, formerly kept at Aso Shrine, contains a wealth of information relating to the Nanbokucho and Kamakura Periods. Of the 1,047 items of this collection, 34 volumes of 304 letters and 36 manuscripts have been designated as Important Cultural Properties.

2. The Hosokawa Manuscript Collection

This is the largest collection of primary source materials on the administration of the Hosokawa government (Hosokawa Han), ranging from the Nanbokucho Period to the early Meiji Period.

URL: <https://www.lib.kumamoto-u.ac.jp/eng/howtouse>



Special Collections from the 17th century and Meiji period



Kumamoto University Library
Official Mascot "KUMAPON"

KUMAMOTO UNIVERSITY MUSEUMS

The main building of the former Fifth High School, now the Memorial Museum, is the symbol of Kumamoto University. The building has been designated as a National Cultural Property, along with the Chemical Laboratory, the front gate, and the Museum of the Engineering Faculty. We also preserve the tangible cultural properties of the Yamazaki Memorial Hall on the Honjo campus and the Kumayaku Museum on the Oe campus. We are planning to create the "Kumamoto University Museum," which will consist of these buildings and artifacts. As the first step in this process, the university initiated the renewal of the Memorial Museum of the Fifth High School in 2006, and is now gathering historical documents and materials.

五高記念館



<http://www.goko.kumamoto-u.ac.jp/en/>

※ It is currently closed because of Kumamoto earthquake in 2016.

The Memorial Museum of the Fifth High School (National Important Cultural Property)

The Fifth High school was established for young boys as the most prominent educational institution in Kyushu in 1887. Jigoro Kano, Yakumo Koizumi (Lafcadio Hearn) as well as Soseki Natsume were among the more celebrated professors who taught here. Even after 120 years, the original Fifth High School building is still well-maintained and very much appreciated by the public.

Hours	10:00 – 16:00 (Entrance allowed up to 15:30)
Days Closed	Every Tuesday, August Obon holidays Year-end and New Year's holidays National holidays between December and February only
Admission	Free

正門 (赤門)



The Front Gate (The Red Gate) (National Important Cultural Property)

The front gate of the Fifth High School is popularly known as the Red Gate (AKAMON) and is still the dignified main gate of the north campus of Kumamoto University.

化学実験場



The Chemical Laboratory of the Fifth High School (National Important Cultural Property)

This building was used as the lab for chemical experiments. There is a row of labs as well as a tiered lecture hall with a corridor situated on the west side.

※ It is currently closed because of Kumamoto earthquake in 2016.

工学部研究資料館



Museum of the Engineering Faculty (National Important Cultural Property)

This building was constructed in 1908 as a machine shop for students of the former Kumamoto Junior College of Technology. The exhibits include various machines and tools still in working condition. The public is welcome to visit the museum during Open Campus Days, the University Festival and of course the following Days.

Days Opened	The third Thursday of the month (13:00–16:00)
Admission	Free

※ It is currently closed because of Kumamoto earthquake in 2016.

TOP GLOBAL UNIVERSITY PROJECT

[Name of Project] **A Leading University Cultivating Global Leaders from Kumamoto**

[Future Vision of the University Planned in TGU Project]

Kumamoto University is open, compatible, and mobile

Introducing an internationally standardized education system offering compatibility and mobility

Kumamoto University is a regional globalization

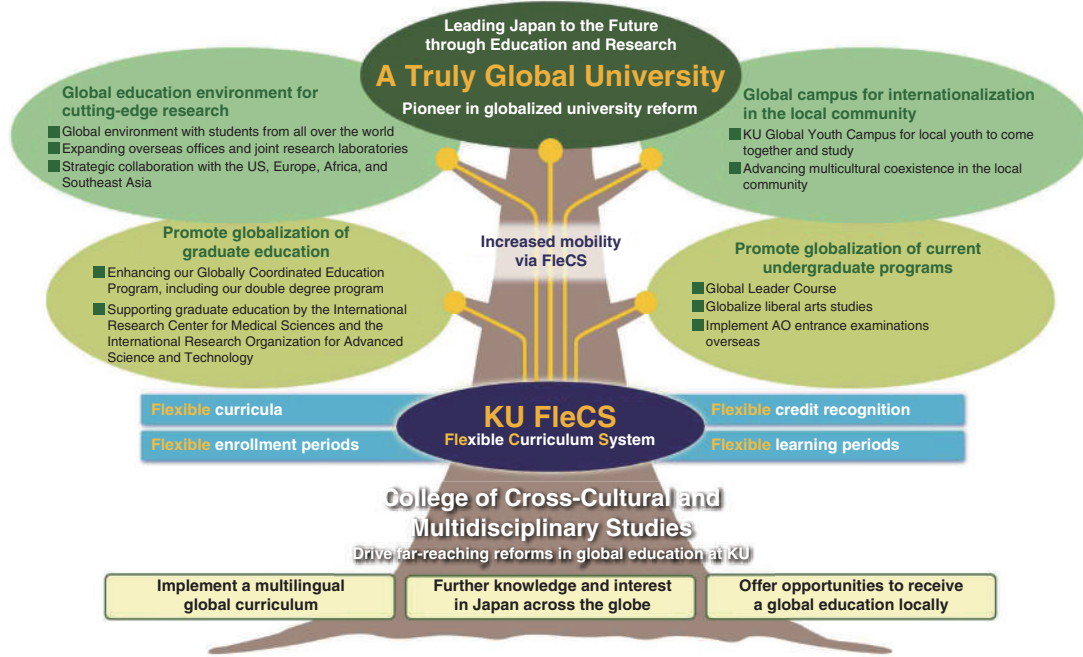
Promoting regional human resources, supplying innovative talent who can help advance a technology-oriented nation

Kumamoto University continually improves, researches, and develops

Enriching an advanced education system and research activities

[Summary of Project] Through this project, we aim to become a truly global university by implementing various educational reforms. To that end, we will contribute to the globalization of the local community as a globally competitive research hub with the following 4 targets:

- ① An education system highly conducive to internationalism
- ② Global atmosphere for the inclusion of international students
- ③ Strengthened and globalized graduate education to support cutting-edge research
- ④ Global campus as a driving force for internationalization in the local community



Goals To Be Achieved By 2023

1,600 | international students

Increase the number of international students to 1,600 (approximately 16% of the entire student body)

50% | liberal arts education subjects delivered in English

Increase the percentage of liberal arts education subjects delivered in English to 50%

90 | courses available in a foreign language

Increase the number of courses that can be completed in a foreign language to 90 (approximately 50% of the total number)

700 | participants in the KU Global Youth Campus Program

Increase the number of participants in the KU Global Youth Campus Program to 700

20 | Globally Coordinated Education Programs

Increase the number of Globally Coordinated Education Programs available through our Globally Coordinated Education Program to 20

1,200 | students who have studied abroad

Increase the number of students who have studied abroad to 1,200 (approximately 14% of the Japanese student population)

1,040 | subjects available in foreign languages

Increase the number of subjects available in foreign languages to 1,040 (approximately 20% of the total number)

1,150 | students who satisfy the foreign language ability standard

Increase the number of students who satisfy the foreign language ability standard to 1,150 (approximately 12% of the entire student body)

※ minimum TOEFL® iBT: 80 (TOEFL® PBT: 550); minimum IELTS: 6

770 | foreign-national faculty members and others

Increase the number of faculty who are of foreign nationality, hold degrees from foreign universities or have research experience over one year in foreign countries to 770 (approximately 73% of the total number of full-time teaching faculty)

CURRENT DETAILS

42 Global Leader Course

Number of students enrolled in the Global Leader Course (2019 academic year)

To promote the globalization of undergraduate education, a Global Leader Course has been established in four existing academic divisions (Faculty of Letters, Law, Sciences, and Engineering). The Course began in April 2017 and 42 participants are registered for the 2019 academic year. The Course centers on material from the "GOKOH School Program," which inherited the traditions and spirit of The Fifth High School (located on the grounds of Kumamoto University before its founding). The Course endows global leaders with experience and a broad, multicultural, world-embracing mindset that equips them to thrive in the 21st-century global society.



964 Expansion of global education

Number of students enrolled in liberal arts courses taught in English (2018 academic year)

A "Multidisciplinary Studies" department was newly established in 2017 to provide liberal arts courses in English for all international and Japanese students. Focusing on liberal arts education with an international basis, and taught mainly by foreign lecturers, classes were offered in English on 34 themes in 12 subject areas in 2018. A total of 964 students enrolled.



1,453 Broad expansion of the Kumamoto University Global Youth Campus Program

Number of participants in the Kumamoto University Global Youth Campus Program (2018 academic year)

For regional high school, technical college and other students, programs and events designed to spark an interest in global education before university enrollment are being developed. These provide opportunities for global education and deepen the students' understanding of and interest in global interaction. Besides activities held at the University such as "Meet & Greet Study-Abroad Students" (high school students interact with University students who studied abroad), foreign teaching staff and international students are also sent outside the University to interact with SGH (Super Global High school), SSH (Super Science High school), local high school and technical college students through various activities, in 2018, 1,453 students participated in these programs.



999 Establishment of the College of Cross-Cultural and Multidisciplinary Studies and various global exchange activities

Total number of participants in activities organized by the College of Cross-Cultural and Multidisciplinary Studies (2018 academic year)

In March 2015, the College of Cross-Cultural and Multidisciplinary Studies (CCMS) was established and charged with driving the globalization of education at Kumamoto University. In addition to providing students with a liberal-arts education in English, the College operates an extracurricular activity to improve English skills ("English-TALKmon") in which 768 students participated in 2018. Moreover, to encourage students to study abroad, a class to strengthen English skills (IELTS) is offered with 69 students enrolled for the 2018 term. The College also contributes to multicultural coexistence within the regional community by organizing activities that support international understanding within local communities. In one year, a total of 162 people (including 36 foreigners) from the University participated.



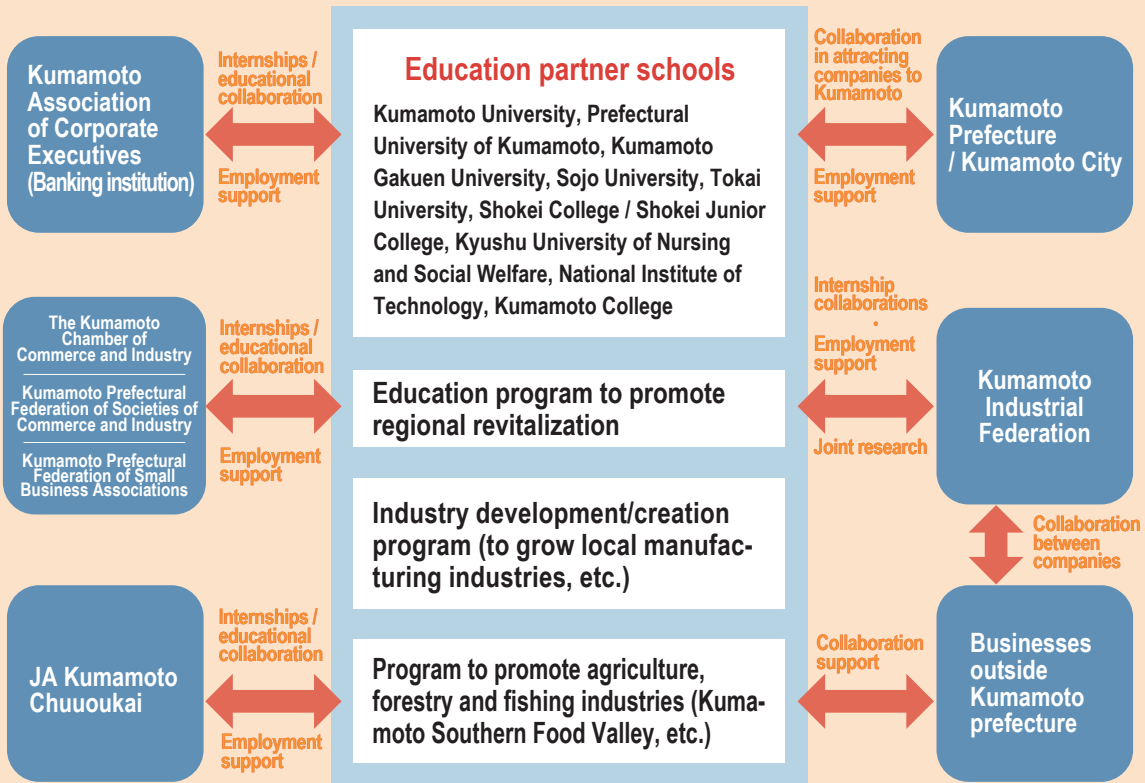
PROGRAM FOR PROMOTING REGIONAL REVITALIZATION BY UNIVERSITIES AS CENTERS OF COMMUNITY (COC+)

Education Program to expand industry and employment in Kumamoto under "All Kumamoto" united efforts

In order to control the outflow of younger population from Kumamoto Prefecture and to attract the young talents, it is essential to provide them with the industry-oriented education system which nurtures the students for local industries and community. The Program for Promoting Regional Revitalization by Universities as Centers of Community (COC+) aims to promote the representative industries of Kumamoto, in the area of manufacturing, agriculture, forestry and fishing. It also aims to produce skilled individuals who can implement the measures needed for "revitalization" process and job creation.

Kumamoto University is holding a leadership role in industry development mainly in the manufacturing industry of the central and northern areas of Kumamoto Prefecture. In this program, universities, business organizations and other business-related associations in Kumamoto, as well as in Kumamoto Prefectural Government, will closely cooperate with each other for human resource development under "All Kumamoto" united efforts.

Promote industry and increase employment in Kumamoto, and increase the number of young students attracted to working places in Kumamoto



Since being selected for the “Program for Promoting the Enhancement of Research Universities” by the Ministry of Education, Culture, Sports, Science and Technology (MEXT) in 2013, we have established international collaborative research groups for life sciences, natural sciences, and humanities and social sciences to globalize and strengthen our research activities. Under the management of top professors in each research group, we invite researchers from abroad, recruit talented young researchers, regularly hold international seminars, establish overseas joint laboratories, and do much more.

Institutions Collaborating with Kumamoto University (2010-2019)

Kumamoto University is currently working with 2,236 international institutions and we actively promote new collaborations to deliver quality research.

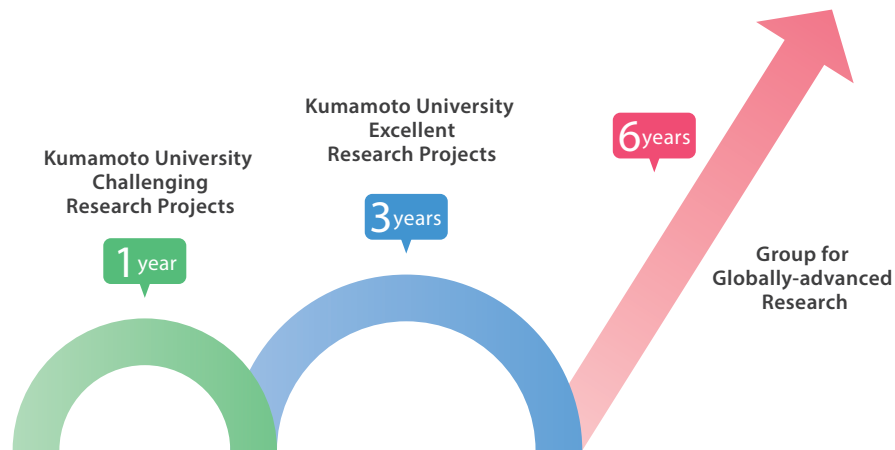
87 countries

2,236 institutional collaborations



INITIATIVES TO DEVELOP PROMINENT RESEARCH

Kumamoto University continues to pioneer distinguished and high level research as a regional and seminal institute that strives to act as a hub for developing international research. Thus far, Kumamoto University has officially authorized 4 vital domains as cutting-edge international research and provided 6 years of focused support accordingly. Additionally, it has initiated the "Kumamoto University Excellent Research Projects" (3 years) to support research fields that will prove invaluable to future generations, as well as supporting the bold and highly ambitious "Kumamoto University Challenging Research Projects" (1 year), since fiscal year 2017.




■ Kumamoto University Challenging Research Projects ■ めばえ研究推進事業

Bold research projects with the potential for revolutionizing established concepts and changing the direction of academia fall within the framework of Kumamoto University Challenging Research Projects. These programs aim to revitalize research that may represent the future of Kumamoto University and are funded for one year.

Natural Sciences




Development of a next-generation nucleic acid medicine for treating rare disease
KATSUDA Yosuke
 Faculty of Advanced Science and Technology




Control of surface phenomena in hybrid structure based on 2D materials
HARA Masahiro
 Faculty of Advanced Science and Technology


Life Sciences




Targeting post-translational modifications of mitochondrial proteins for therapeutic applications
ARIMA Yuichiro
 Faculty of Life Sciences




Study of establishment for stem cell pluripotency by ribosome
ITO Naofumi
 Faculty of Life Sciences




Selective neural circuit stimulation for satisfaction in mice
TAKEMOTO Makoto
 Faculty of Life Sciences



Identification of tethering complex of organelle contact sites
YAMAMOTO Masatoshi
 Faculty of Life Sciences



Development of blood-brain barrier-permeable delivery systems for treatment of neurodegenerative disease using
ITO Shingo
 Faculty of Life Sciences



Elucidation of the personality formation mechanism
KURAUCHI Yuki
 Faculty of Life Sciences



Crystallographic analysis of an enzymatic reaction involved in genome maintenance
NAKAMURA Teruya
 Priority Organization for Innovation and Excellence / Faculty of Life Sciences



Microbial signal regulates crosstalk between bone marrow and other organs in early hematopoiesis
HAYASHI Yoshikazu
 International Research Center for Medical Sciences



Development of unique therapeutic strategy based on metastatic organotropism formed by circulating tumor cell and endothelial cell interaction
MURAMATSU Masashi
 Institute of Resource Development and Analysis

■ Kumamoto University Excellent Research Projects ■ みらい研究推進事業

The Kumamoto University Excellent Research Project aims to develop world-leading research areas that represent the potential of Kumamoto University. It focuses on nurturing researchers who are already highly successful in their respective fields so that they may pass their knowledge on to future generations. Only the most highly evaluated projects are approved for the three-year funding support.

Eisei-Bunko Research Center



COE for Study on Japanese Early Modern History by comprehensive analysis of material of the Kumamoto Domain
INABA Tsuguharu
 Eisei-Bunko Research Center

Natural Sciences



Development of functional materials using 2D-materials
IDA Shintaro
 Faculty of Advanced Science and Technology



The Molecular Agriculture -From Kumamoto to the world-
SAWA Shinichiro
 Faculty of Advanced Science and Technology



Materials Interface Architecture towards Innovative Structural and Functional Materials
TSUREKAWA Sadahiro
 Faculty of Advanced Science and Technology

Life Sciences



Next-Generation Drug Discovery Research Using Unique Libraries
SUGIMOTO Yukihiro
 Faculty of Life Sciences



Research core for aging and healthy life expectancy
TOMIZAWA Kazuhito
 Faculty of Life Sciences



Elucidation of the common mechanism between cancer and mental disorder through LINE-1 analyses
BABA Hideo
 Faculty of Life Sciences



Mechanisms of leukemogenesis by chronic infection and inflammatory stress: adult T-cell leukemia as a model
MATSUOKA Masao
 Faculty of Life Sciences

■ Group for Globally-advanced Research ■ 国際先端研究拠点

KATSUKI Sunao,
Institute of Pulsed
Power Science



Pulsed Power Science and Application

Pulsed power is an instantaneous form of energy, whether electrical energy, chemical energy, mechanical energy, or optical energy, that can exert a tremendous amount of power. The magnitude of pulsed power can be equivalent to the total of all electrical power consumption at an instant in Kyushu, in Japan, or even in the world. Pulsed power is capable of generating unusually extreme fields, such as ultra-high-pressure fields, ultra-high electromagnetic fields, super-gravity fields and a variety of plasmas. This group furthers studies of pulsed-power produced in extremely reactive fields, and explores applications in material processing, environmental protection, biotechnology, medical treatment, food processing, and more, as well as further developing pulsed power technology. Our facilities and equipment are among the most advanced in the world, and include a comprehensive explosion experiment facility,

the world's first super-gravity generation device, a comprehensive bioelectrics experiment facility, and pulsed power infrastructure equipment of great variety in terms of time range (down to sub-nanoseconds) and power range (up to 10 GW). The facilities and equipment are used not only for our own research but also for researchers from disparate fields associated with both companies and other universities, and, as such, are widely deployed in the related fields of pulsed power science and technology. We are seeking solutions to various problems that the international community is facing, and working to contribute to the realization of a safe and secure society by using pulsed power science and technology. Furthermore, we seek to encourage young researchers to be international leaders by providing them with international and interdisciplinary research environments.

NISHINAKAMURA Ryuichi,
Institute of Molecular
Embryology and Genetics



Stem-Cell Based Tissue Regeneration Research and Education Unit

This group was established by Kumamoto University in 2013 to continuously promote the scientific activities of the Global COE Program, which was funded by the Ministry of Education, Culture, Sports, Science and Technology from 2007 to 2011. We aim to establish an education and research unit that will foster creative researchers who focus on stem-cell based developmental medicine. Stem cell research is one of the most attractive fields in biomedical science. The expectations for regenerative medicine are rising, since the derivation of human iPS cells opened the door to the regeneration of organs and tissues. To achieve this goal, however, a deeper understanding of broad areas of science, including developmental biology, is crucial. We have recruited leading researchers with various backgrounds, including those from the fields of medicine, pharmacology, and developmental biology. Our research

topics include molecular mechanisms of stem cell maintenance, lineage specification of early-stage embryos, establishment of iPS cells from patients, development and regeneration of the pancreas, kidneys, eyes, and neurons, as well as epigenetics and metabolisms in diseased states. We expect that these research activities will synergistically contribute to a better understanding of organogenesis and to strategies in disease treatment. We have seen seminal achievements during the past several years. They include the induction of three-dimensional kidney tissue from human iPS cells, the derivation of insulin-producing pancreatic cells from ES/iPS cells, a method of eliminating undifferentiated cells during tissue differentiation, a drug development using patient-derived iPS cells, and epigenetic control of energy expenditures and cancers. This group also seeks to encourage young scientists in research fields related to stem cell and organogenesis studies. We support these young scientists by providing in-house grants, travel expenses, and many other benefits. We hope that young researchers trained in this program will work together to build a global next-generation network in developmental medicine. We are confident that this environment will help young postdocs and students become globally oriented independent scientists.

UENO Takamasa,
Joint Research Center for
Human Retrovirus Infection



International Research Center Aiming at the Control of AIDS

Over 35 million people are still living with HIV-1 infection, and nearly two million people die of AIDS-related illnesses each year in the world. In addition, among developed countries, our country has been experiencing increased incidences of HIV-1 infection. Thus, HIV/AIDS remains a substantial threat to the global health, and developing an HIV vaccine and therapies to cure HIV/AIDS have still been a global challenge. New program "International Research Center Aiming at the control of AIDS" intends to enhance and expand international research and education core based on the framework of the successfully implemented global COE "Global Education and Research Center Aiming at the Control of AIDS" Program over the five years. To do this, we reorganize our mission to make a substantial effort to research studies leading to the development of (1) new therapies to cure HIV/AIDS and (2) an HIV/AIDS vaccine.

Also, in collaboration with the newly reformed Educational Program for Advanced Research in Infectious Diseases and AIDS, this program intends to enhance capacity-building opportunities, and thereby junior-level scientists and graduate students can be self-standing and globally visible. Collectively, we will contribute to constructing a distinguishable platform that fosters leading-edge research and education in HIV/AIDS field through our expanding inter-continental academic/education partnerships.

KAWAMURA Yoshihito,
Magnesium Research Center



International Research Core for Advanced Magnesium Alloys

Currently there is a high demand in the transportation industry for light-weighting the structural components, in order to reduce both energy consumption and CO₂ emissions. Magnesium is the lightest structural metal and Mg alloys are increasingly being used in a wide range of applications for structural, functional, and biomedical benefits. The Magnesium Research Center (MRC) at Kumamoto University, established in December 2011, has been engaged in and dedicated to a variety of Mg-related research areas. They include alloy and process design, physical metallurgy fundamentals, mechanical metallurgy, corrosion, surface treatment, and recycling. MRC has developed *KUMADAI* Mg alloys - a new generation of Mg alloys that have an excellent balance of mechanical performance,

non-flammability, and corrosion resistance. MRC has three key goals: 1) to provide state-of-the-art research and education, 2) to help the maturation and insertion of *KUMADAI* Mg alloys into actual applications, and 3) to establish a global research network to significantly enhance collaboration with universities, research institutes, and industries.

INTERNATIONAL EXCHANGE AGREEMENTS

Kumamoto University has formed cooperative relationships with foreign academic institutions by concluding academic exchange agreements. As of September 1, 2019 we have 267 partner institutions in 53 countries and regions.

1 chart **LISTS OF UNIVERSITY-LEVEL EXCHANGE AGREEMENTS**

127 partner institutions (39 countries and regions)

(As of September 1, 2019)

Country	University / Institute	Since	Country	University / Institute	Since
Australia	The University of Newcastle	1986	Korea	Chosun University	2009
Australia	Queensland University of Technology	2014	Korea	Pukyong National University	2011
Australia	University of Technology Sydney	2017	Korea	University of Seoul	2011
Azerbaijan	Baku State University	2019	Korea	Ajou University	2011
Bangladesh	University of Dhaka	2000	Korea	Chungbuk National University	2012
Burkina Faso	University Ouaga I Professor Joseph KI-ZERBO	2016	Korea	Pusan National University	2012
Cambodia	Royal University of Phnom Penh	2016	Korea	Chonbuk National University	2012
Canada	University of Alberta	2001	Korea	Hannam University	2016
Canada	McGill University	2016	Laos	National University of Laos	2011
China	Guangxi Normal University	2005	Latvia	Riga Technical University	2018
China	Tongji University	2005	Malaysia	University Sains Malaysia	2012
China	Dalian University of Technology	2006	Malaysia	Universiti Putra Malaysia	2018
China	Nanchang University	2006	Mexico	Autonomous University of Nuevo León	2017
China	Shanghai Normal University	2008	Mongol	Mongolian University of Life Sciences	2018
China	Harbin Institute of Technology	2009	Myanmar	Yangon Technological University	2015
China	Jilin University	2009	Myanmar	Patheingyi University	2016
China	Nankai University	2009	Nepal	Pokhara University	2010
China	Shandong University	2009	New Zealand	Massey University	1996
China	Sichuan University	2009	Philippines	University of the Philippines, Diliman	2002
China	Northeastern University	2010	Philippines	University of the Philippines Los Baños	2015
China	Beijing University of Technology	2011	Philippines	Ateneo de Manila University	2016
China	Shenzhen University	2011	Poland	University of Warsaw	2009
China	The University of Macau	2011	Poland	Lublin University of Technology	2015
China	East China University of Political Science and Law	2011	Romania	University of Bucharest	2015
China	Jilin Institute of Chemical Technology	2013	Rwanda	University of Rwanda	2014
China	Northeast Normal University	2014	Slovenia	University of Maribor	2016
China	Chongqing University	2014	Spain	University of Valencia	2014
China	Nanjing Normal University	2015	Spain	University of Santiago de Compostela	2018
China	Guilin University of Technology	2015	Spain	Valladolid University	2018
China	Anhui University	2015	Taiwan	Southern Taiwan University of Science and Technology	2008
China	Wuhan University of Technology	2016	Taiwan	National Tsing Hua University	2015
China	Guangxi Medical University	2018	Taiwan	National University of Kaohsiung	2016
China	Fuzhou University Zhicheng College	2019	Taiwan	Chang Jung Christian University	2016
China	Beijing Institute of Technology	2019	Tanzania	Muhimbili University of Health and Allied Sciences	2015
D.R Congo	University of Mbuji-Mayi	2015	Thailand	Kasetsart University	1994
Djibouti	Djibouti University	2013	Thailand	Khon Kaen University	2004
Egypt	Suez Canal University	2006	Thailand	Mahidol University	2013
Egypt	Fayoum University	2008	Thailand	Burapha University	2017
Egypt	Ain Shams University	2019	Thailand	Chiang Mai University	2018
France	Bordeaux Institute of Technology	2006	Thailand	Chulalongkorn University	2019
France	University of Bordeaux	2007	Turkey	Ege University	2000
France	Aix-Marseille University	2016	Turkey	Canakkale Onsekiz Mart University	2015
France	University Bordeaux Montaigne	2017	UK	Durham University	1993
Germany	Saarland University	2001	UK	University of Birmingham	1993
Germany	Heinrich Heine University Düsseldorf	2017	UK	University of Leeds	2006
Germany	Hochschule für Technik und Wirtschaft Berlin	2018	USA	The University of Montana	1987
Hungary	Pázmány Péter Catholic University	2015	USA	Montana State University	1987
India	Indian Institute of Technology Bombay	2018	USA	Virginia Commonwealth University	1989
Indonesia	The Consortium of Institut Teknologi Sepuluh Nopember, Indonesia (Institut Teknologi Sepuluh Nopember, Universitas Sam Ratulangi, Universitas Mataram, Universitas Cenderawasih, Universitas Nusa Cendana)	2008	USA	University of North Carolina at Charlotte	1990
Indonesia	Institut Teknologi Bandung	2011	USA	Texas Tech University	1994
Indonesia	Gadjah Mada University	2013	USA	The University of Texas at San Antonio	2010
Indonesia	Airlangga University	2013	USA	University of Massachusetts Boston	2016
Indonesia	Udayana University	2015	USA	The University of Georgia	2017
Indonesia	University of Indonesia	2016	USA	Wright State University	2017
Indonesia	University of Brawijaya	2016	USA	University of Alaska Anchorage	2018
Indonesia	State Islamic University of Sunan Ampel Surabaya	2018	Vietnam	VNU University of science	2007
Ireland	Waterford Institute of Technology	2018	Vietnam	Ho Chi Minh City University of Technology	2010
Italy	University of Padova	2018	Vietnam	Hue University	2010
Korea	Pai Chai University	1999	Vietnam	National University of Civil Engineering	2010
Korea	Dong-A University	2005	Vietnam	University of Social Sciences and Humanities, Vietnam National University, Hanoi	2016
Korea	Korea Advanced Institute of Science and Technology	2006	Vietnam	University of Languages and International Studies, VNU	2016
			Vietnam	Foreign Trade University	2016

INTERNATIONAL EXCHANGE AGREEMENTS

chart 2 **LISTS OF DEPARTMENT-LEVEL EXCHANGE AGREEMENTS**

140 partner institutions (39 countries and regions)

(As of September 1, 2019)

Country	University / Institute	Counterpart	Since
Australia	Division of Materials Engineering, The University of Queensland	Magnesium Research Center	2013
Australia	Australian Phenomics Facility, The Australian National University	Institute of Resource Development and Analysis	2014
Australia	Faculty of Engineering, Architecture and Information Technology (EAIT), The University of Queensland	Institute of Pulsed Power Science	2018
Australia	The Commonwealth Scientific and Industrial Research Organization	Faculty of Advanced Science and Technology, International Research Organization for Advanced Science and Technology	2019
Austria	Faculty of Philological and Cultural Studies, University of Vienna	Center for Policy Studies	2016
Bangladesh	Faculty of Engineering and Technology, Faculty of Science, Noakhali Science And Technology University	Faculty of Advanced Science and Technology, Graduate School of Science and Technology	2018
Brazil	Technological Institute of Aeronautics	Faculty of Engineering, Graduate School of Science and Technology, Faculty of Advanced Science and Technology	2017
Cambodia	University of Health Sciences, Cambodia	School of Pharmacy, Graduate School of Pharmaceutical Sciences	2016
Canada	Queen's University at Kingston	Faculty of Engineering, Graduate School of Science and Technology, Faculty of Advanced Science and Technology	2014
Canada	University of Calgary, Schulich School of Engineering	Graduate School of Science and Technology, Faculty of Advanced Science and Technology	2016
China	Chinese Academy of Medical Sciences	School of Medicine	1983
China	Harbin Medical University	School of Medicine, Faculty of Medical and Pharmaceutical Sciences, Graduate School of Medical Sciences, Graduate School of Pharmaceutical Sciences	1999
China	Shanghai Laboratory Animal Center, Chinese Academy of Science	Institute of Resource Development and Analysis	2004
China	College of Civil Engineering & Architecture, School of Chemistry & Chemical Engineering, Guangxi University	Faculty of Engineering, Graduate School of Science and Technology, Faculty of Advanced Science and Technology	2007
China	College of Engineering, Peking University	Faculty of Engineering, Graduate School of Science and Technology, Faculty of Advanced Science and Technology	2008
China	Wenzhou Medical University	Faculty of Medical and Pharmaceutical Sciences	2008
China	School of Foreign Languages, Hangzhou Normal University	Faculty of Letters, Graduate School of Social and Cultural Sciences	2010
China	Civil Engineering College, Municipal and Environmental Engineering College, Transportation Engineering College, Graduate School, Shenyang Jianzhu University	Faculty of Engineering, Graduate School of Science and Technology, Faculty of Advanced Science and Technology	2010
China	Institute for Biomedical Research / Medical College, Xiamen University	School of Medicine, Faculty of Life Sciences, Graduate School of Medical Sciences	2010
China	School of Medicine, Zhejiang University	School of Medicine, Faculty of Life Sciences, Graduate School of Medical Sciences	2010
China	National Institutes for Food and Drug Control	Institute of Resource Development and Analysis	2012
China	Center for Public Policy and Governance, Shanghai Jiao Tong University	Center for Policy Studies	2013
China	School of Tourism and City Administration, Zhejiang Gongshang University	Faculty of Engineering, Graduate School of Science and Technology, Faculty of Advanced Science and Technology	2015
China	Key Laboratory of Chemistry of Northwestern Plant Resources, Chinese Academy of Sciences (CAS), Lanzhou Institute of Chemical Physics (LICP)	Graduate School of Science and Technology, Faculty of Advanced Science and Technology	2018
China	School of Medicine, Department of Laboratory Animal Sciences, Shanghai Jiao Tong University	Institute of Resource Development and Analysis	2018
Czech	Technical University of Ostrava and Institute of Geonics of the Academy of Sciences of the Czech Republic	Faculty of Engineering, Graduate School of Science and Technology, Faculty of Advanced Science and Technology	2009
Czech	University of Chemistry and Technology, Prague	Graduate School of Science and Technology	2010
Czech	University of Pardubice	Faculty of Science, Faculty of Engineering, Graduate School of Science and Technology, Faculty of Advanced Science and Technology	2015
Czech	Institute of Physics, Academy of Sciences of Czech Republic	Faculty of Engineering, Graduate School of Science and Technology, Faculty of Advanced Science and Technology	2015
Czech	Faculty of Mathematics and Physics, Charles University	Magnesium Research Center	2018
Czech	Faculty of Mathematics and Physics, Charles University	Graduate School of Science and Technology, Faculty of Advanced Science and Technology	2019
Denmark	Faculty of Humanities, University of Copenhagen	Faculty of Humanities and Social Sciences, Faculty of Letters, College of Cross-Cultural and Multidisciplinary Studies	2018
Egypt	Faculty of Pharmaceutical Sciences and Pharmaceutical Industries, Future University in Egypt	School of Pharmacy, Graduate School of Pharmaceutical Sciences, Faculty of Life Sciences	2019
France	University of Clermont Auvergne	Faculty of Science, Faculty of Engineering, Graduate School of Science and Technology, Faculty of Advanced Science and Technology	2010
France	University Joseph Fourier - Grenoble I	Faculty of Engineering, Graduate School of Science and Technology, Faculty of Advanced Science and Technology	2011
France	École nationale supérieure des mines de Saint-Étienne	Faculty of Science, Faculty of Engineering, Graduate School of Science and Technology, Faculty of Advanced Science and Technology	2012
France	CRM2 Laboratory, University of Lorraine	Faculty of Science, Graduate School of Science and Technology, Faculty of Advanced Science and Technology	2014
France	Institut Pasteur	Institute of Resource Development and Analysis	2015
France	Faculty of Sciences and Engineering, Toulouse III Paul Sabatier	Faculty of Engineering, Graduate School of Science and Technology, Faculty of Advanced Science and Technology, Faculty of Science	2018
Germany	Faculty of Arts, University of Bonn	Faculty of Letters	1997
Germany	Leibniz Institute for Applied Geophysics	Graduate School of Science and Technology, Faculty of Advanced Science and Technology	2013
Germany	Department of Civil and Environmental Engineering, Ruhr-University Bochum	Faculty of Engineering, Graduate School of Science and Technology, Faculty of Advanced Science and Technology	2014
Germany	Faculty of Georesources and Materials Engineering, Institute of Physical Metallurgy and Metal Physics, RWTH Aachen University	Faculty of Engineering, Graduate School of Science and Technology, Faculty of Advanced Science and Technology	2015
Germany	Institute of Physics of Faculty of Mathematics and Natural Sciences, University of Rostock	Faculty of Science, Graduate School of Science and Technology, Faculty of Advanced Science and Technology	2017
Germany	Faculty for Chemistry and Pharmacy, Würzburg University	Faculty of Engineering, Graduate School of Science and Technology, Faculty of Advanced Science and Technology	2018
Germany	Department of Chemistry, Philipps-University Marburg	Faculty of Science, Graduate School of Science and Technology, Faculty of Advanced Science and Technology	2018
Germany	TU Bergakademie Freiberg, Faculty of Mechanical, Process and Energy Engineering	Faculty of Engineering, Graduate School of Science and Technology, Faculty of Advanced Science and Technology	2018

Country	University / Institute	Counterpart	Since
Germany	Faculty of Science, Eberhard Karls University of Tubingen	Faculty of Engineering, Graduate School of Science and Technology, Faculty of Advanced Science and Technology	2019
Germany	Karlsruhe Institute of Technology	Faculty of Engineering, Graduate School of Science and Technology, Faculty of Advanced Science and Technology	2019
India	Faculty of Engineering & Technology, Annamalai University	Faculty of Engineering, Graduate School of Science and Technology, Faculty of Advanced Science and Technology	2006
India	Manipal University	Faculty of Engineering, Graduate School of Science and Technology, Faculty of Advanced Science and Technology	2009
India	National Institute of Technology Karnataka	Faculty of Engineering, Graduate School of Science and Technology, Faculty of Advanced Science and Technology	2009
India	Alva's Institute of Engineering & Technology	Faculty of Engineering, Graduate School of Science and Technology, Faculty of Advanced Science and Technology	2017
India	Indian Institute of Science Department of Aerospace Engineering	Institute of Pulsed Power Science	2017
India	Mangalore Institute of Technology and Engineering	Faculty of Engineering, Graduate School of Science and Technology, Faculty of Advanced Science and Technology	2018
Indonesia	Electrical Engineering School, Graduate School, Telkom University	Faculty of Engineering, Graduate School of Science and Technology, Faculty of Advanced Science and Technology	2014
Indonesia	Faculty of Engineering, Hasanuddin University	Faculty of Engineering, Graduate School of Science and Technology, Faculty of Advanced Science and Technology	2015
Indonesia	Faculty of Industrial Technology, Islamic University of Indonesia	Faculty of Engineering, Graduate School of Science and Technology, Faculty of Advanced Science and Technology	2017
Kenya	School of Humanities and Social Sciences, Pwani University	Faculty of Letters, Graduate School of Social and Cultural Sciences	2015
Korea	College of Education, Kangnam University	Faculty of Education	2002
Korea	Advanced Process and Materials R&BD Group, Korea Institute of Industrial Technology	Faculty of Engineering, Graduate School of Science and Technology, Faculty of Advanced Science and Technology	2003
Korea	College of Engineering, Hoseo University	Faculty of Engineering, Graduate School of Science and Technology, Faculty of Advanced Science and Technology	2007
Korea	College of Health Science, Korea University / Department of Bio-convergence engineering, Korea University Graduate School	School of Medicine, Faculty of Life Sciences, Graduate School of Health Sciences	2007
Korea	College of Engineering, Graduate School of Engineering, Regional Innovation Center for Environmental Technology of Thermal Plasma, Inha University	Faculty of Engineering, Graduate School of Science and Technology, Faculty of Advanced Science and Technology	2011
Korea	College of Engineering, Korea Maritime and Ocean University	Faculty of Engineering, Graduate School of Science and Technology, Faculty of Advanced Science and Technology	2011
Korea	Graduate School of Kosin University and College of Natural Science, Kosin University	Faculty of Science, Faculty of Engineering, Graduate School of Science and Technology, Faculty of Advanced Science and Technology	2011
Korea	College of Engineering, Yonsei University	Faculty of Engineering, Graduate School of Science and Technology, Faculty of Advanced Science and Technology	2013
Korea	Laboratory Animal Resource Center, Korea Research Institute of Bioscience and Biotechnology	Institute of Resource Development and Analysis	2013
Korea	Light Metal Division, Korea Institute of Materials Science	Magnesium Research Center	2014
Korea	College of Natural Sciences, Teachers' College, Kyungpook National University	Faculty of Science, Graduate School of Science and Technology, Faculty of Advanced Science and Technology	2014
Korea	Magnesium Technology Innovation Center, Seoul National University	Magnesium Research Center	2015
Korea	College of Health Science and Institute of Biomedical Engineering, Yonsei University at Wonju	Faculty of Advanced Science and Technology, International Research Organization for Advanced Science and Technology	2018
Kyrgyz	Institute of Chemistry and Chemical Technology of National Academy of Science of the Kyrgyz Republic	Institute of Pulsed Power Science	2014
Kyrgyz	Faculty of Engineering, Faculty of Science, Institute of Natural and Applied Sciences, Kyrgyz-Turkish Manas University	Faculty of Science, Faculty of Engineering, Graduate School of Science and Technology, Faculty of Advanced Science and Technology	2016
Laos	Faculty of Engineering, Souphanouvong University	Faculty of Engineering, Graduate School of Science and Technology, Faculty of Advanced Science and Technology	2017
Malaysia	Universiti Teknologi PETRONAS	Faculty of Science, Faculty of Engineering, Graduate School of Science and Technology, Faculty of Advanced Science and Technology	2012
Malaysia	Universiti Malaysia Sarawak	International Research Center for Medical Sciences	2017
Malaysia	Centre for Environmental Sustainability and Water Security, University Technology Malaysia	Center for Water Cycle, Marine Environment, and Disaster Management	2018
Malaysia	Earth Observation Centre, Institute of Climate Change, Universiti Kebangsaan Malaysia	Center for Water Cycle, Marine Environment, and Disaster Management	2019
Mongol	School of Mathematics and Computer Science, National University of Mongolia	Faculty of Science, Graduate School of Science and Technology, Faculty of Advanced Science and Technology	2013
Mongol	Mongolian University of Science and Technology	Faculty of Engineering, Graduate School of Science and Technology, Faculty of Advanced Science and Technology	2016
Myanmar	Mandalay Technological University	Faculty of Engineering, Graduate School of Science and Technology, Faculty of Advanced Science and Technology	2015
Netherlands	Faculty of Engineering Technology, University of Twente	Faculty of Engineering, Graduate School of Science and Technology, Faculty of Advanced Science and Technology	2015
Philippines	College of Engineering, De La Salle University-Manila	Faculty of Engineering, Graduate School of Science and Technology, Faculty of Advanced Science and Technology	2011
Poland	Faculty of Materials Science and Ceramics, AGH University of Science and Technology	Graduate School of Science and Technology, Faculty of Advanced Science and Technology	2010
Republic of South Africa	School of Pharmacy and Faculty of Natural Sciences, University of the Western Cape	School of Pharmacy, Graduate School of Pharmaceutical Sciences, Faculty of Life Sciences	2018
Russia	Aircraft and Mechanical Engineering Faculties, Novosibirsk State Technical University	Shock Wave and Condensed Matter Research Center	2008
Russia	Institute of Advanced Technologies, Togliatti State University	Magnesium Research Center	2015
Singapore	Cancer Science Institute of Singapore (CSI), National University of Singapore	International Research Center for Medical Sciences	2017
Spain	The Spanish National Research Council	Institute of Resource Development and Analysis	2018
Sri Lanka	Gampaha Wickramarachchi Ayurveda Institute, University of Kelaniya	Faculty of Life Science, Graduate School of Pharmaceutical Sciences, School of Pharmacy	2014
Sudan	Medicinal and Aromatic Plants and Traditional Medicine Research Institute	Faculty of Life Science, Graduate School of Pharmaceutical Sciences, School of Pharmacy	2012
Sudan	Faculty of Pharmacy, University of Khartoum	School of Pharmacy, Graduate School of Pharmaceutical Sciences	2016
Switzerland	Institute of Asian and Oriental Studies, Department of Japanology, University of Zurich	Faculty of Letters, Graduate School of Social and Cultural Sciences	2016

Country	University / Institute	Counterpart	Since
Switzerland	School of Biology, Faculty of Biology and Medicine, University of Lausanne	Faculty of Advanced Science and Technology, Graduate School of Science and Technology, Faculty of Science, International Research Organization for Advanced Science and Technology	2018
Switzerland	Faculty of Science, University of Geneva	Faculty of Science, Graduate School of Science and Technology, Faculty of Advanced Science and Technology	2019
Taiwan	Nan Jeon University of Science and Technology	Faculty of Education	2005
Taiwan	College of Engineering, College of Electrical Engineering and Computer Science, National Kaohsiung First University of Science and Technology	Faculty of Engineering, Graduate School of Science and Technology, Faculty of Advanced Science and Technology	2009
Taiwan	National Laboratory Animal Center	Institute of Resource Development and Analysis	2010
Taiwan	College of Foreign Languages and Literatures, Tamkang University	Faculty of Letters, Graduate School of Social and Cultural Sciences	2013
Taiwan	College of Mechanical and Electrical Engineering, National Taipei University of Technology	Faculty of Engineering, Graduate School of Science and Technology, Faculty of Advanced Science and Technology	2014
Taiwan	Mariculture Research Center, Fisheries Research Institute, Council of Agriculture	Center for Marine Environment Studies	2014
Taiwan	Tatung University, College of Electrical Engineering and Computer Science	Faculty of Engineering, Graduate School of Science and Technology, Faculty of Advanced Science and Technology	2017
Taiwan	School of Law, Soochow University	Faculty of Law, Graduate School of Social and Cultural Sciences, School of Law	2017
Taiwan	School of Law, Fu Jen Catholic University	Faculty of Humanities and Social Sciences, Faculty of Law, School of Law, Graduate School of Social and Cultural Sciences	2018
Taiwan	Department of Materials Science and Engineering, National Taiwan University	Magnesium Research Center	2018
Taiwan	College of Health Sciences and Technology, National Central University	Faculty of Life Sciences	2018
Taiwan	Center for Micro/Nano Science and Technology, National Cheng Kung University	Magnesium Research Center	2019
Tanzania	St. Francis University College of Health and Allied Sciences (SFUCHAS)	Center for AIDS Research, International Research Center for Medical Sciences	2017
Thailand	Faculty of Engineering, King Mongkut's Institute of Technology Ladkrabang	Faculty of Engineering, Graduate School of Science and Technology, Faculty of Advanced Science and Technology	2014
Thailand	Faculty of Allied Health Sciences, Naresuan University	Faculty of Life Sciences, Graduate School of Health Sciences	2016
Thailand	King Mongkut's University of Technology Thonburi, The Joint Graduate School of Energy and Environment	Graduate School of Science and Technology, Faculty of Advanced Science and Technology	2016
Thailand	School of Medicine, Mae Fah Luang University	Faculty of Life Sciences, Graduate School of Medical Sciences, AIDS Research Center	2016
Thailand	Faculty of Science and Technology, Thammasat University	Faculty of Engineering, Graduate School of Science and Technology, Faculty of Advanced Science and Technology	2018
Thailand	Faculty of Engineering and Industrial Technology, Silpakorn University	Graduate School of Science and Technology, Faculty of Advanced Science and Technology	2018
Thailand	Faculty of Medicine, Prince of Songkla University	Faculty of Life Sciences, Joint Research for Humana Retrovirus Infection	2019
Turkey	Engineering Faculty, Cankiri Karatekin University	Faculty of Engineering, Graduate School of Science and Technology, Faculty of Advanced Science and Technology	2015
Turkey	Faculty of Engineering, Graduate School of Natural and Applied Science, Gazi University	Faculty of Engineering, Graduate School of Science and Technology, Faculty of Advanced Science and Technology	2015
Turkey	Kilis 7 Aralik University	School of Pharmacy, Graduate School of Pharmaceutical Sciences	2017
Turkey	The Faculty of Agriculture, Ordu University	School of Pharmacy, Graduate School of Pharmaceutical Sciences	2017
Turkey	Anadolu University	Faculty of Life Sciences, School of Pharmacy, Graduate School of Pharmaceutical Sciences	2017
UK	Mary Lyon Centre, MRC Harwell	Institute of Resource Development and Analysis	2011
UK	The School of Engineering, University of Glasgow	Institute of Pulsed Power Science	2014
UK	School of Metallurgy and Materials, The University of Birmingham	Graduate School of Science and Technology	2018
Uruguay	Institut Pasteur de Montevideo	Institute of Resource Development and Analysis	2017
USA	College of Engineering, Georgia Institute of Technology	Faculty of Engineering, Graduate School of Science and Technology, Faculty of Advanced Science and Technology	1996
USA	The Jackson Laboratory	Institute of Resource Development and Analysis	2004
USA	School of Nursing, University of California, San Francisco	Faculty of Sciences, Graduate School of Science of Health and Technology, Faculty of Advanced Science and Technology	2011
USA	School of Nursing and Health Professions, University of San Francisco	Faculty of Sciences, Graduate School of Science of Health and Technology, Faculty of Advanced Science and Technology	2012
USA	Mouse Biology Program, University of California, Davis	Institute of Resource Development and Analysis	2013
USA	Center for Inflammation, Immunity & Infection, Georgia State University	Faculty of Life Science, Graduate School of Pharmaceutical Sciences, School of Pharmacy	2013
USA	Geophysical Laboratory, Carnegie Institution of Washington	Institute of Pulsed Power Science, Graduate School of Science and Technology, Faculty of Advanced Science and Technology	2015
USA	Michigan State University	Faculty of Advanced Science and Technology, International Research Organization for Advanced Science and Technology	2018
USA	Virginia Institute of Marine Science (VIMS), College of William and Mary	Center for Water Cycle, Marine Environment and Disaster Management	2019
Vietnam	Vietnam Institute of Geosciences and Mineral Resources, Ministry of National Resources and Environment	Faculty of Science, Graduate School of Science and Technology, Faculty of Advanced Science and Technology	2007
Vietnam	Danang University of Technology	Faculty of Engineering, Graduate School of Science and Technology, Faculty of Advanced Science and Technology	2008
Vietnam	Vietnam National Museum of Nature, Vietnam Academy of Science and Technology	Graduate School of Science and Technology, Faculty of Advanced Science and Technology	2012
Vietnam	Hanoi University of Mining and Geology	Faculty of Engineering, Graduate School of Science and Technology, Faculty of Advanced Science and Technology	2015
Vietnam	Institute of Marine Geology and Geophysics, Vietnam Academy of Science and Technology	Graduate School of Science and Technology, Faculty of Advanced Science and Technology	2017

The department names above are written as they existed when the agreements were concluded / renewed.

INTERNATIONAL EXCHANGE AGREEMENTS

chart **3** Changes in Numbers of Partner Institutions (As of September 1, 2019)

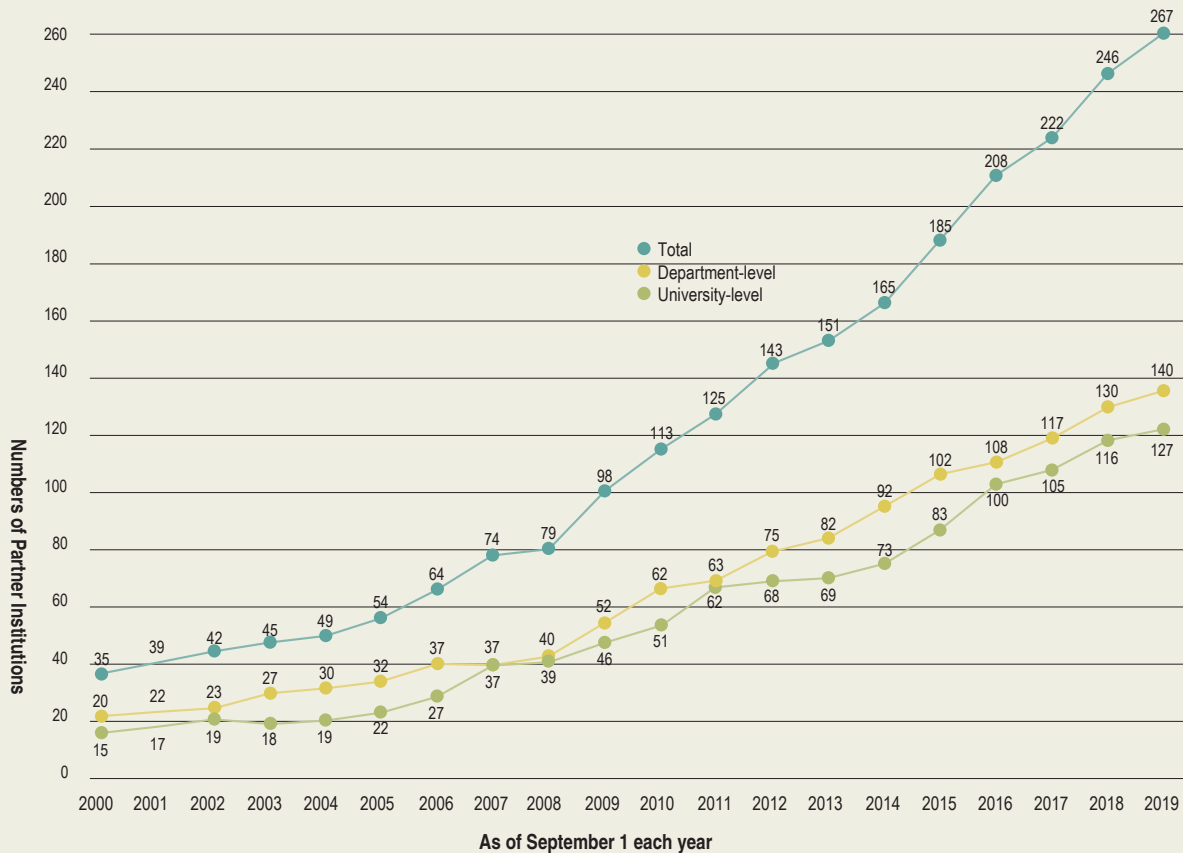
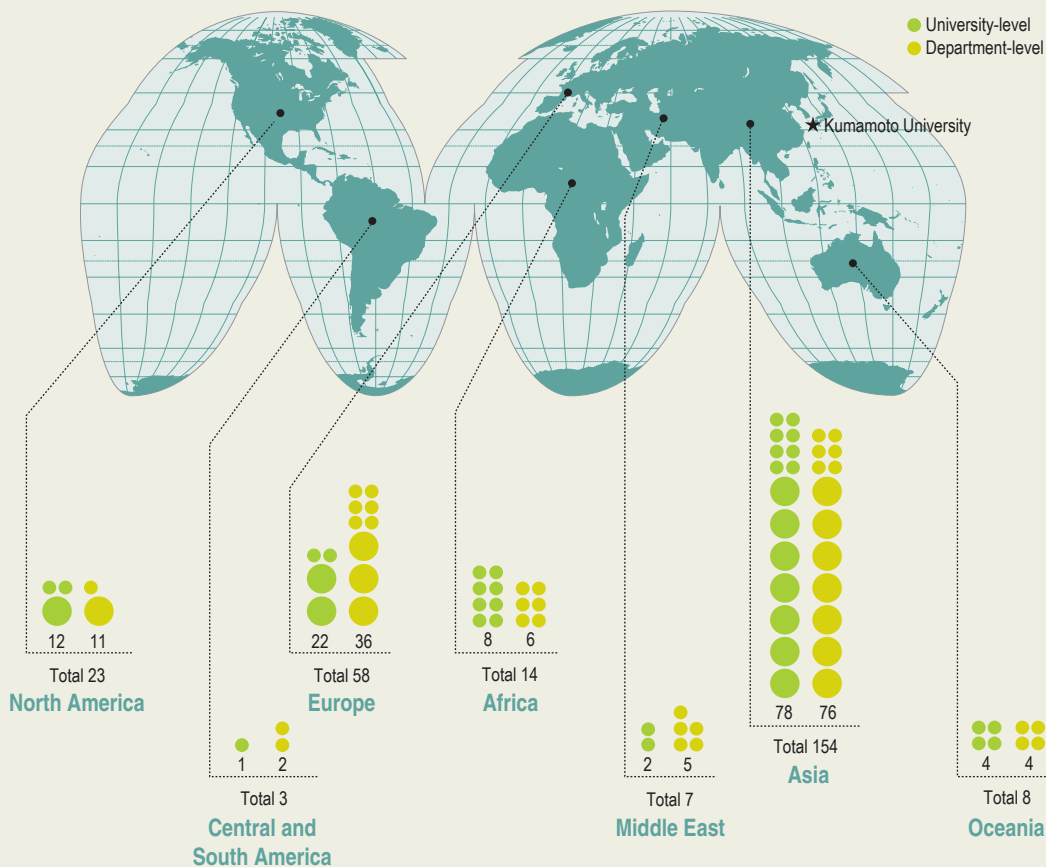


chart **4** WORLD MAP WITH THE NUMBERS OF PARTNER INSTITUTIONS



RESEARCHERS AND SCHOLARS EXCHANGES

(April 2018 - March 2019)

Region	Country	Funding Source	University Staff Sent Abroad						Visiting Foreign Researchers							
			Ministry of Education (MEXT)	Japan Society for the Promotion of Science (JSPS)	Japan International Cooperation Agency (JICA)	Other Domestic Funds	Foreign Governments/Institutes	Private-Funded	Sub-total	Ministry of Education (MEXT)	Japan Society for the Promotion of Science (JSPS)	Japan International Cooperation Agency (JICA)	Other Domestic Funds	Foreign Governments/Institutes	Private-Funded	Sub-total
Asia	Bangladesh			1		1			2			1				12
	Brunei	2							2							0
	Cambodia	2					1	1	4	2						2
	China	42	5	1	54	12	5	119	2	13		14	2	1	32	
	India	9			17			26		1		4	1	1	7	
	Indonesia	8			8	5		21		3		5			8	
	Korea	35	1		51	6	5	98		2		37		2	41	
	Laos	1		1	3	1		6				1			1	
	Malaysia	12			11	1	1	25		2		1			3	
	Mongol	10		1	2	1	1	15	1			4			5	
	Myanmar		1	5	4	6		16	1	2					3	
	Nepal				1			1	2						0	
	Philippines	6			3			9					1		1	
	Singapore	14			15	2		31				3			3	
	Sri Lanka	1			2			3							0	
	Taiwan	22			28	4	6	60	1			11		5	17	
	Thailand	25		1	21	4	5	56			31	18	4		53	
	Vietnam	17			4	4	1	26				3			3	
Sub-total	206	8	9	225	47	26	521	7	24	31	112	8	9	191		
Middle East	Iran						0		1		1			3		
	Turkey	2	3		5		10		1		1			2		
	Yemen						0	1						1		
Sub-total	2	3	0	5	0	0	10	1	2	0	2	1	0	6		
Africa	Democratic Republic of the Congo	2					2	2						2		
	Egypt	1					1				2	9		11		
	Ethiopia						2			4				4		
	Ghana	2					2							0		
	Libya						0				1			1		
	South Africa			1	1		2							0		
	Sudan	6					6		1					1		
	Tanzania		2				2							0		
	Zimbabwe	1					1							0		
	Sub-total	12	2	0	1	1	2	18	2	1	4	3	9	0	19	
Oceania	Australia	10	1		21	1	1	34	2	1		5		8		
	New Zealand				4	2	6				1			1		
	Solomon Islands	2					2							0		
Sub-total	12	1	0	25	3	1	42	2	1	0	6	0	0	9		
North America	Canada	3		1	9		13	1	1		4			6		
	USA	57	11	1	184	10	9	272	4		32	1		37		
	Sub-total	60	11	2	193	10	9	285	5	1	0	36	1	0	43	
South-Middle America	Bolivia						0				1			1		
	Brazil	2			4		6							0		
	Chile				1		1							0		
	Colombia				1		1							0		
	Mexico	1			1	1	3							0		
	Peru	1			1		2							0		
	Sub-total	4	0	0	8	1	0	13	0	0	0	1	0	0	1	
	Europe	Austria	2			13	2	17		1		1			2	
Azerbaijan					1		1		1					1		
Belgium		2			10		13				1			1		
Bulgaria					1		1							0		
Croatia		1			2		3							0		
Czech		2			7	3	12	1	1		1	1		4		
Denmark		1			4		6	1			2			3		
Estonia							0							0		
Finland		1			3		4							0		
France		13	5	1	29		1	49		3		14		1	18	
Germany		7			46	1	2	56	1			9	1		11	
Greece		1			6		2	9				1			1	
Hungary					4			4		2					2	
Ireland		1			2			3							0	
Italy		3			26		1	30	2	1		2			5	
Latvia		1						1							0	
Lithuania					1	1		2				1			1	
Netherlands		3	1	1	5		5	15	3			1			4	
Norway					2			2							0	
Poland		4			7	1		12				1			1	
Portugal		3	1		3	2		9							0	
Romania					1	1		2							0	
Russia		2	3		4			9	1	3		4			8	
Slovakia					2			2							0	
Slovenia						1	1	2				3			3	
Spain		6			21	1	1	29	2			4			6	
Sweden		1			5	1		7				1			1	
Switzerland	3			6			9	2			2			4		
UK	14			19	2	3	38	4			10			14		
Uzbekistan							1							0		
Sub-total	71	10	2	230	16	19	348	17	12	0	58	2	1	90		
Total		367	35	13	687	78	57	1,237	34	41	35	218	21	10	359	

INTERNATIONAL STUDENTS

(As of May 1, 2019)

Region	Country	Faculties					Graduate Schools					Japanese Language Trainees	Total
		Undegraduates	Research Students	Auditors	Special Auditors	Sub-total	Graduates	Research Students	Special Auditors	Special Research Students	Sub-total		
Asia	Bangladesh					0	26				26		26
	Cambodia				1	1					0		1
	China	33	4		42	79	108	14	3	9	134		213
	India					0	6				6		6
	Indonesia				7	7	34		2		36		43
	Korea	7			25	32		1			1		33
	Malaysia	15			2	17	7				7		24
	Mongol	9				9	4				4		13
	Myanmar					0	9				9		9
	Philippines					0	1	1	2	1	5		5
	Singapore					0	1				1		1
	Taiwan				13	13	6	1	4	2	13		26
	Thailand				4	4	10			1	11		15
	Vietnam				8	8	4				4		12
Sub-total		64	4	0	102	170	216	17	11	13	257	0	427
Middle East	Afghanistan					0	8				8		8
	Iran	1				1				0			1
	Iraq					0	1			1			1
	Turkey					0			1		1		1
	Sub-total		1	0	0	0	1	9	0	1	0	10	0
North America	USA				3	3					0		3
	Sub-total		0	0	0	3	3	0	0	0	0	0	3
South-Middle America	Brazil					0		1			1		1
	Dominican Republic					0	1				1		1
	El Salvador					0	1				1		1
	Mexico					0	1				1		1
	Sub-total		0	0	0	0	0	3	1	0	0	4	0
Oceania	Australia				3	3					0		3
	Papua New Guinea					0	1				1		1
	Kiribati					0	1				1		1
	Sub-total		0	0	0	3	3	2	0	0	0	2	0
Africa	Egypt					0	5				5		5
	Ghana					0	4				4		4
	Kenya					0	1				1		1
	Malawi					0		1			1		1
	Mauritania					0	1				1		1
	Nigeria					0	1				1		1
	Senegal					0	1				1		1
	Sudan					0	1				1		1
	Tanzania					0	3				3		3
	Tunisia					0	1				1		1
Sub-total		0	0	0	0	0	18	1	0	0	19	0	19
Europe	Armenia					0	1				1		1
	Austria					0					0	1	1
	Czech Republic				1	1					0		1
	France				4	4				5	5		9
	Germany				2	2					0		2
	Kazakhstan					0					0	1	1
	Kyrgyzstan					0			2		2		2
	Poland				1	1	1				1		2
	Switzerland				2	2					0		2
	UK				5	5					0		5
Sub-total		0	0	0	15	15	2	0	2	5	9	2	26
Total (From 46 countries)		65	4	0	123	192	250	19	14	18	301	2	495

JAPANESE STUDENTS ABROAD

The table below shows the number of students who have studied abroad at overseas universities with which Kumamoto University has concluded a student exchange agreement, or have otherwise mutually agreed on a student exchange. (The period of study abroad is not indicated)

Country	Partner University	Number of Students
Australia	The University of Newcastle	9
Australia	University of Technology Sydney	6
Canada	University of Alberta	14
Canada	University of Calgary	12
China	Anhui University	2
China	Dalian University of Technology	8
China	Hangzhou Normal University	1
China	Harbin Institute of Technology	1
China	Shandong University	7
Czech	Academy of Sciences of the Czech Republic	3
France	University Bordeaux Montaigne	2
France	University of Bordeaux	1
France	University of Clermont Auvergne	1
Germany	RWTH Aachen University	1
Germany	Tuebingen University	2
Germany	Wurzburg University	2
Indonesia	Institut Teknologi Sepuluh Nopember	1
Korea	Dong-A University	3
Korea	Korea Advanced Institute of Science and Technology	11
Latvia	Riga Technical University	14
Malaysia	University Putra Malaysia	12
Mexico	Autonomous University of Nuevo Leon	1
New Zealand	Massey University	7
Philippines	De La Salle University-Manila	39
Poland	University of Warsaw	1
Slovenia	University of Maribor	1
Spain	Valladolid University	1
Taiwan	Southern Taiwan University of Science and Technology	12
Thailand	Burapha University	1
Thailand	Kasetsart University	4
Thailand	Khon Kaen University	2
Thailand	Thammasat University	1
Turkey	Canakkale Onsekiz Mart University	1
UK	Durham University	1
UK	University of Birmingham	1
UK	University of Leeds	13
USA	Montana State University	16
USA	University of Massachusetts Boston	8
Total (April 2018 - March 2019)		223

OVERSEAS FOREIGN LANGUAGE TRAINING PROGRAM

While expanding the number of partner universities that students can attend for foreign-language training during spring and summer breaks, we are striving for greater differentiation among destinations to provide students with diverse study-abroad opportunities. Partners include Montana State University (USA), the University of Alberta (Canada), the University of Leeds (England), the University of Freiburg (Germany), Riga Technical University (Latvia), De La Salle University (Philippines) and additional destinations in the Americas, Europe, Southeast Asia and other locations are being planned. The program not only immerses students in a foreign language, but also provides them with an opportunity to experience the unique culture of the host country.

INTERNATIONAL PROGRAMS

Kumamoto University Short-Term Exchange Program

The Kumamoto University Short-Term Exchange Program is designed for full-time undergraduate students who are from universities that have a student exchange agreement with Kumamoto University, and have foreign citizenship. The program offers undergraduate international students, who are interested in the Japanese language, Japanese and Asian society and culture, advanced science and technology, and interactions with international students, the chance to study for up to a year in Japan while still retaining their full-time status at their home universities. Kumamoto University hopes that this program will promote interactions between students from the partner universities and local students.

• E Course (Program in English)

As a general rule, this course is intended for third year undergraduate students who are currently at their home universities. Students in this course mainly take Short-Term Exchange Program classes taught in English. Also, they can take Japanese Language classes. The students can take specialized subjects for undergraduate students of each faculty and General Education classes which are not included in program completion requirements as well.

(Note: Most specialized subjects and General Education classes are taught in Japanese.)

• J Course (Program in Japanese)

Students in this course mainly take classes in specialized subjects for undergraduate students of each faculty, as well as classes in the Japanese Language. Also, they can take General Education classes and Short-Term Exchange Program classes taught in English.



Kumamoto University Japanese Studies Program

The Kumamoto University Japanese Studies program is a one-year program intended for undergraduate international students who are majoring in fields related to Japanese language and culture. The aim of the program is to improve Japanese proficiency to impart the knowledge and skills required to conduct Japanese studies, and to help students acquire a practical knowledge of Japanese language and culture for use in society.

(Note: Application is required through the Japanese embassy or consulate general in your own country or Kumamoto University.)



JAPANESE LANGUAGE CLASSES

The College of Cross-Cultural and Multidisciplinary Studies offers the following classes related to the Japanese language for international students and researchers at Kumamoto University.

- Japanese Language classes (General Education classes; JLPT N3 equivalent or above)
- Japanese classes for the "Intensive Japanese course for Japanese Government Scholarship students", "Teacher-Training students", and "undergraduate students in the Japan - Korea Joint Exchange Program in Science and Engineering"

Undergraduate students, students in the Short-Term Exchange Program and students in the Japanese Studies Program may enroll in some classes for academic credits.

Various levels of classes are offered so that students can choose classes according to their Japanese proficiency and their interests.



KUMAMOTO UNIVERSITY SUMMER AND SPRING PROGRAM

At Kumamoto University, we offer two short-term study programs in Kumamoto for undergraduate students from our partner universities – the Summer Program, held in late July and early August; and the Spring Program, held in late February and early March.

This program is designed to provide an opportunity for undergraduate students from overseas partner universities to enjoy a short stay in Kumamoto while deepening their interest and understanding of life in Japan, as well as the natural and scientific aspects of Kumamoto and Kumamoto University.

Over the course of the 10-day program, participants enjoy lectures from professors at Kumamoto University, educational excursions to Minamata, Mt. Aso, and Kumamoto Castle, first-hand cultural experiences, and an international exchange event with local high school students.

All participating students give positive reviews of their experiences, with many expressing their gratitude at being given the opportunity to come to Japan, and an interest in returning to Kumamoto University to study in the future.



DOUBLE DEGREE PROGRAMS

Through the cultivation and revitalization of relationships with overseas partner universities, we have established and continue to develop a high-quality student framework that includes 17 unique double-degree exchange programs. These efforts both enhance the global learning environment for Japanese students and attract outstanding international students from overseas.

Lists of Double Degree Programs

Kumamoto University	Counterpart			
	Country	University / Institute	Course	Since
Graduate School of Science and Technology	Indonesia	Institut Teknologi Sepuluh Nopember (ITS)	Graduate Program	Master's / Doctoral (M)2013 / (D)2008
		Institut Teknologi Bandung		Doctoral 2012
	Korea	Pai chai University	Graduate School	Doctoral 2012
	Philippines	De La Salle University	Gokongwei College of Engineering	Master's / Doctoral (M)2016 / (D)2016
	Taiwan	Southern Taiwan University of Science and Technology	College of Engineering	Master's / Doctoral (M)2015 / (D)2009
		National Kaohsiung First University of Science and Technology	College of Engineering	Master's / Doctoral (M)2017 / (D)2009
	France	University of Bordeaux	Department of Sciences and Technologies	Doctoral 2015
		Blasé Pascal University		Doctoral 2015
		Université de Lorraine		Doctoral 2016
Poland	AGH University of Science and Technology	Faculty of Materials Science and Ceramics	Doctoral 2010	
Graduate School of Medical Sciences	Thailand	Mahidol University	Faculty of Medicine Siriraj Hospital	Doctoral 2017
		Khon Kaen University	Faculty of Medicine	Doctoral 2017
		Chiang Mai University	Faculty of Medicine	Doctoral 2019

Latest Information ⇒ <https://www.kumamoto-u.ac.jp/kokusaikouryuu/kokusaikouryuudata/doubledegree>

Launch of a new center and an alumni association overseas

In March 2019, we launched the Kumamoto University Liaison Office at Southern Taiwan University of Science and Technology (STUST) in Tainan City, Taiwan. The opening ceremony was jointly organized by Kumamoto University and our partner, STUST, honored by the attendance of approximately 40 participants from the two universities and other organizations. The ceremony was widely covered by the media, which led to the improvement of our university's visibility.

Taking this opportunity, we held an alumni meeting for the first time in Taiwan, which inspired the establishment of a system allowing our alumni in Taiwan to share information about Kumamoto University within Taiwan.



Opening ceremony of KU Liaison Office at STUST

International public relations activities

As part of the activities by SixERS (consortium of six national universities: Chiba University, Niigata University, Kanazawa University, Okayama University, Nagasaki University, and Kumamoto University), we participated in academic seminars held in ASEAN countries (Myanmar, Laos, Indonesia, and Thailand) in March 2019, introducing our university and interacting with local teaching staff. Most notably, we organized a seminar in Surabaya, Indonesia in cooperation with our local liaison office and our partner, Sepuluh Nopember Institute of Technology (ITS), to introduce the six national universities to over 200 local students. We successfully improved our visibility through effective promotional activities utilizing our liaison office and alliance.



Academic seminar at ITS

Employment support for international students

We have supported international students in finding jobs in Japan. To help them learn Japanese language used in business settings, we offered 10 classes of business Japanese. To provide career education, we organized 16 seminars by outside lecturers including business managers, HR representatives, and former international students. Besides these, we encouraged international students to participate in internships and provided lectures of various kinds. In FY2018, the system of "Global Student Assistants" (Japanese students at Kumamoto University who support international students) was newly introduced, which helped international students enhance their Japanese communication skills and their understanding of Japanese culture and companies.



Group photo at the 7th career seminar

Diverse initiatives by globally advanced research bases at Kumamoto University

Kumamoto University has the International Research Center for Medical Sciences (IRCMS) and the International Research Organization for Advanced Science and Technology (IROAST), established with the purpose of improving the university's global research capabilities in the fields of life science and natural science. During FY2018, the IRCMS and IROAST hosted 12 seminars and 28 seminars, respectively, to make their global, cutting-edge research activities widely known within the university. In addition, the IRCMS, IROAST, and Korea Advanced Institute of Science and Technology (KAIST) hosted two joint symposia in October 2018 and January 2019, thus contributing to the creation and promotion of international and interdisciplinary collaborative research.



The 2nd KU-KAIST Joint Symposium

President		HARADA Shinji, M.D., D.M.Sc.
Trustees	Vice-Presidents	FURUSHIMA Mikio, D.Sc.
		MATSUMOTO Yasumichi, D.Eng.
		YAMAZAKI Kodo, LL.D.
		TANIHARA Hidenobu, M.D., Ph.D.
	Administrative Director	ARIMATSU Masahiro
Auditors		SHIOTANI Yoshiko
		ASAI Yutaka
Vice-Presidents		TSURUTA Tetsuzo
		SHIMIZU Kiyoyuki, Ph.D.
		OTANI Jun, Ph.D.
		FUKAMACHI Kiminobu, LL.M.
		MIYASE Mitsuko, M.Ed.
Faculty of Letters	Dean	MIZUMOTO Toyofumi, M.Lit.
Center for Soseki and Hearn Studies	Director	MIZUMOTO Toyofumi, M.Lit.
Faculty of Education	Dean	YAHATA Hideyuki, Ph.D.
Center for Educational Research and School Development	Director	HOSHIKAWA Takashi, Ph.D.
Kindergarten Attached to the Faculty of Education	Principal	UMEDA Motohiro, M.F.A
Elementary School Attached to the Faculty of Education	Principal	IFUKU Hirotohi, Ph.D.
Junior High School Attached to the Faculty of Education	Principal	TO Takehiko, Ph.D.
Special Support School Attached to the Faculty of Education	Principal	YAHATA-TANIGUCHI Ayako, Ph.D.
Faculty of Law	Dean	SUZUKI Keiju, LL.M.
Faculty of Science	Dean	ICHIKAWA Fusao, D.Sc.
School of Medicine	Dean	TOMIZAWA Kazuhito, D.D.S., Ph.D.
School of Pharmacy	Dean	KAI Hirofumi, Ph.D.
Faculty of Engineering	Dean	USAGAWA Tsuyoshi, D.Eng.
Engineering Research Equipment Center	Director	KUNITAKE Masashi, D.Eng.
Education Center for Global Human Resources in Engineering	Director	FUJIYOSHI Takanori, D.Eng.
Graduate School of Education	Dean	YAHATA Hideyuki, Ph.D.
Faculty of Humanities and Social Sciences	Dean	SUZUKI Keiju, LL.M.
Faculty of Advanced Science and Technology	Dean	USAGAWA Tsuyoshi, D.Eng.
Innovative Research and Education Center for Engineers in Kumamoto University	Director	USAGAWA Tsuyoshi, D.Eng.
Faculty of Life Sciences	Dean	TOMIZAWA Kazuhito, D.D.S., Ph.D.
Southern Kyushu and Okinawa Unit Center of Japan Environment and Children's Study	Director	KATO Takahiko, M.D., Ph.D.
Center for Medical Education and Research	Director	OIKE Yuichi, M.D., Ph.D.
Center for Metabolic Regulation of Healthy Aging	Director	YAMAGATA Kazuya, M.D., Ph.D.
Global Center for Natural Resources Sciences	Director	MISUMI Shogo, Ph.D.
Graduate School of Social and Cultural Sciences	Dean	KUMAMOTO Sadahiro, Ph.D.
Graduate School of Science and Technology	Dean	ICHIKAWA Fusao, D.Sc.
Global Joint Education Center for Science and Technology	Director	ICHIKAWA Fusao, D.Sc.
Graduate School of Medical Sciences	Dean	TOMIZAWA Kazuhito, D.D.S., Ph.D.
Graduate School of Health Sciences	Dean	MAEDA Hitomi, RN, Ph.D.
Graduate School of Pharmaceutical Sciences	Dean	KAI Hirofumi, Ph.D.
Institute of Molecular Embryology and Genetics	Director	NISHINAKAMURA Ryuichi, M.D., Ph.D.
Center for Organ Regeneration Research	Director	ERA Takumi, MD., Ph.D.
Institute of Pulsed Power Science	Director	MATSUMOTO Yasumichi, D.Eng.
University Hospital	Director	TANIHARA Hidenobu, M.D., Ph.D.
Priority Organization for Innovation and Excellence	Director	HARADA Shinji, M.D., D.M.Sc.
Kumamoto Innovative Development Organization	Director	MATSUMOTO Yasumichi, D.Eng.
Organization for Globalization	Director	OTANI Jun, Ph.D.
Headquarters for Admissions and Education	Director	FURUSHIMA Mikio, D.Sc.
Mathematical Science Education Center	Director	FURUSHIMA Mikio, D.Sc.
College of Cross-Cultural and Multidisciplinary Studies	Director	FURUSHIMA Mikio, D.Sc.
International Research Center for Medical Sciences	Director	SUDA Toshio, M.D., Ph.D.
International Research Organization for Advanced Science and Technology	Director	HIYAMA Takashi, D.Eng.
Center for Management of Information Technologies	Director	SUGITANI Kenichi, D.Eng.
The Memorial Museum of the Fifth High School	Director	ITO Ryuichi, D.Eng.
Eisei-Bunko Research Center	Director	INABA Tsuguharu, D.Lit.
Research Center for Instructional Systems	Director	SUZUKI Katsuaki, Ph.D.
Center for Water Cycle, Marine Environment, and Disaster Management	Director	KAKIMOTO Ryuji, Ph.D.
Magnesium Research Center	Director	KAWAMURA Yoshihito, Ph.D.
Institute of Resource Development and Analysis	Director	OIKE Yuichi, M.D., Ph.D.
Environmental Safety Center	Director	TOGAWA Kenichi, D.Ecs.
Research Center for Buried Cultural Properties	Director	ITO Masahiko, D. Lit.
Joint Research Center for Human Retrovirus Infection	Deputy Director	SUZU Shinya, Ph.D.
University Library	Director	YAMADA Hideshi, Dr.jur.
Health Care Center	Director	FUJISE Noboru, M.D., Ph.D.
Student Accessibility Support Room	Director	FUJISE Noboru, M.D., Ph.D.
University Archives	Director	YAMADA Hideshi, Dr.jur.
Institutional Research Office	Director	MATSUMOTO Yasumichi, D.Eng.
Campus Design Office	Director	TANAKA Tomoyuki, D.Arch.

NUMBER OF UNIVERSITY PERSONNEL

(As of May 1, 2019)

Classification	Professors	Associate Professors	Lecturers (Full-time)	Assistant Professors	Research Assistant	Teachers (Attached School)	Sub-total	Administrative and Technical Staff	Total
Faculty of Education						87	87	3	90
Faculty of Science							0	3	3
Faculty of Engineering							0	44	44
Graduate School of Education	31	31	1				63		63
Faculty of Humanities and Social Sciences	57	62	5		1		125		125
Faculty of Advanced Science and Technology	85	86	1	32			204		204
Faculty of Life Sciences	72	50	15	95			232	14	246
Institute of Molecular Embryology and Genetics	8	7	1	10			26	8	34
Institute of Pulsed Power Science	7	5		2			14	1	15
Kumamoto University Hospital	10	11	35	128			184	1,159	1,343
Priority Organization for Innovation and Excellence	1	6		5			12		12
Kumamoto Innovative Development Organization	6	8					14	3	17
Headquarters for Admissions and Education	4	4	4	3			15		15
International Research Center for Medical Sciences	3	4		2			9	2	11
International Research Organization for Advanced Science and Technology	1	3		1			5		5
Center for Management of Information Technologies	4	1		1			6	3	9
The Memorial Museum of the Fifth High School		1					1		1
Eisei-Bunko Research Center	1	1					2		2
Research Center for Instructional Systems	3	4					7		7
Center for Water Cycle, Marine Environment, and Disaster Management	6	7		1			14	1	15
Magnesium Research Center	3			1			4		4
Institute of Resource Development and Analysis	3	2	2	4			11	6	17
Environmental Safety Center		1					1		1
Research Center for Buried Cultural Properties		1		2			3		3
Joint Research Center for Human Retrovirus Infection	6						6		6
Health Care Center	1	1		1			3	2	5
Administration Bureau							0	443	443
Total	312	296	64	288	1	87	1,048	1,692	2,740

STUDENT ENROLLMENT

(As of May 1, 2019)

■ Undergraduate Students ■

Faculty and School	Number	
Letters	774	532
Education	1,090	619
Law	908	442
Science	823	201
Medicine	1,325	701
Pharmacy	501	260
Engineering	2,336	430
Total	7,757	3,185

■ Diploma Course ■

Faculty and School	Number	
Diploma Course in Special Needs Education	20	14

■ Special Course ■

Faculty and School	Number	
Yogo Teacher Training	44	43

* Colored figures indicate the number of females included in the figures.

■ Graduate Students ■

Faculty and School	Master		Master of Ed.		Doctor	
Education	49	23	35	12	—	
Social and Cultural Sciences	147	72	—		66	35
Science and Technology	926	131	—		157	32
Medical Sciences	35	19	—		318	98
Health Sciences	51	23	—		40	25
Pharmaceutical Sciences	67	22	—		82	33
Total	1,275	290	35	12	663	223

■ Attached Schools ■

Classification	Number	
Elementary School	647	324
Junior High School	480	239
Special Support School	61	20
Kindergarten	134	62
Total	1,322	645

STUDENT FINANCIAL AID

■ Japanese Students ■

(The 2018 School Year)

Classification		Number of Students	Japanese Government Scholarship	Other Scholarships	Total
Undergraduate Students		7,861	3,885	124	4,009
Graduate Students	Master	1,241	549	10	559
	Doctor	696	56	1	57
	Juris Doctor	3	2	0	2
	Master of Ed.	28	4	1	5
Total		9,829	4,496	136	4,632

■ International Students ■

(As of May 1, 2019)

Classification	Number of Students	Japanese Government Scholarship	Other Scholarships	Total
Undergraduate Students	192	7	29	36
Graduate Students	301	70	68	138
Japanese Language Trainees	2	2	0	2
Total	495	79	97	176

STUDENT ADMISSION

(The 2019 School Year / Unit: Person)

■ Undergraduate Students ■

Faculty and School	Admission Quota	Applicants	Newly Enrolled Students
Letters	170	651 (20)	184 (1)
Education	230	617 —	244 —
Law	210	660 (7)	215 (1)
Science	200	754 (8)	208 —
Medicine	115	620 (1)	116 —
Health Sciences	144	438 (1)	151 —
Pharmacy	90	460 (4)	98 —
Engineering	513	1,181 (25)	521 (2)
Total	1,672	5,381 (66)	1,737 (4)

* () Number indicates privately funded entrance exam students from overseas (included in total)

* 2 students dispatched by the Malaysian government and 1 Japanese Government (MEXT) Scholarship Student (excluded from total)

■ Graduate Students ■

Faculty and School	Admission Quota	Applicants	Newly Enrolled Students
Education	Master	21 —	17 —
	Master of Ed.	24 —	19 —
Social and Cultural Sciences	Master	93 (35)	67 (24)
	Doctor	16 (2)	10 (2)
Science and Technology	Master	545 (15)	446 (13)
	Doctor	21 (5)	20 (5)
Medical Sciences	Master	17 —	15 —
	Doctor	51 (7)	50 (4)
Health Sciences	Master	23 —	19 —
	Doctor	8 —	6 —
Pharmaceutical Sciences	Master	38 (4)	35 (3)
	Doctor	22 (1)	22 (1)
Total	828	879 (69)	726 (52)

* () Number indicates privately funded entrance exam students from overseas (included in total)

■ Diploma Course ■

Admission Quota	Applicants	Newly Enrolled Students
Diploma Course in Special Needs Education	21	20

■ Special Course ■

Admission Quota	Applicants	Newly Enrolled Students
Yogo Teacher Training Special Course	77	44

STUDENT TUITIONS AND FEES

(As of May 1, 2019 / Unit: yen)

	Entrance exam fee	Admission fee	Tuition fees
Undergraduate Students	17,000	282,000	535,800 / year
Graduate Students	30,000	282,000	535,800 / year
Graduate Students	30,000	282,000	804,000 / year
Research Students	9,800	84,600	29,700 / month
Auditing students*	9,800	28,200	14,800 / credit

* Includes non-degree course students

DEGREES AWARDED

(The 2018 School Year)

■ Master's Degree ■

Classification	Course Completion	
	2018.4-2019.3	Total
Master of Arts	26	1,088
Master of Education	33	1,255
Master of Law	11	479
Master of Public Policy	2	96
Master of Medical Sciences	10	317
Master of Health Sciences	15	118
Master of Nursing	2	70
Master of Pharmaceutical Sciences	25	1,812
Master of Clinical Pharmacy	—	76
Master of Health Life Sciences	3	27
Master of Science	83	2,513
Master of Engineering	337	9,944
Master of Philosophy	17	131
Master of Science in Instructional Systems	13	139
Total	577	18,065

■ Professional Degree ■

Classification	Course Completion	
	2018.4-2019.3	Total
Master of Education	12	12
Juris Doctor	4	189
Total	16	201

■ Doctoral Degree ■

Classification	Old System	New System			
		Course Completion		Thesis Submission	
		2018.4-2019.3	Total	2018.4-2019.3	Total
Doctor of Literature	—	6	80	1	21
Doctor of Public Policy	—	—	22	—	4
Doctor of Law	—	1	9	—	0
Doctor of Science	—	7	225	2	32
Doctor of Engineering	—	28	706	—	110
Doctor of Philosophy	—	25	385	—	20
Doctor of Medical Sciences	1,663	54	2,236	10	1,016
Doctor of Health Sciences	—	3	15	—	1
Doctor of Nursing	—	—	3	—	0
Doctor of Pharmaceutical Sciences	—	14	324	2	165
Doctor of Clinical Pharmacy	—	—	7	—	0
Doctor of Life Sciences	—	3	27	—	5
Doctor of Philosophy in Health Life Science	—	1	3	—	0
Total	1,663	142	4,042	15	1,374

AFTER GRADUATION

(As of May, 2019)

■ Undergraduate Students ■

Faculty and School	Number of Graduates	Number of Continuing Higher Education	Number of Employed	Others
Letters	169	14	144	11
Education	291	38	240	13
Law	195	10	180	5
Science	167	96	65	6
Medicine	164	14	133	17
Pharmacy	82	34	45	3
Engineering	536	341	187	8
Total	1,604	547	994	63

■ Graduate Students ■

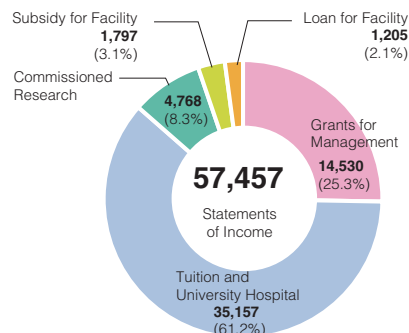
Faculty and School		Number of Graduates	Number of Continuing Higher Education	Number of Employed	Others
Education	Master	27	0	26	1
Social and Cultural Sciences	Master	59	4	48	7
	Doctor	8	0	6	2
Science and Technology	Master	409	12	383	14
	Doctor	57	0	39	18
Medical Sciences	Master	9	2	6	1
	Doctor	83	0	71	12
Health Sciences	Master	16	1	14	1
	Doctor	3	0	3	0
Pharmaceutical Sciences	Master	28	12	15	1
	Doctor	15	0	12	3
Law	Juris Doctor	4	0	0	4
Total		718	31	623	64

BUDGET BREAKDOWN

Statements of Income (FY2019)

Unit: million yen

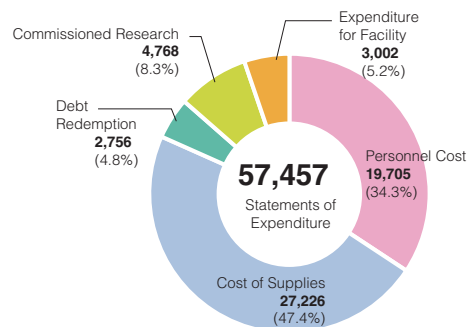
Grants for Management	14,530
Tuition and University Hospital	35,157
Commissioned Research	4,768
Subsidy for Facility	1,797
Loan for Facility	1,205
Total	57,457



Statements of Expenditure (FY2019)

Unit: million yen

Personnel Cost	19,705
Cost of Supplies	27,226
Debt Redemption	2,756
Commissioned Research	4,768
Expenditure for Facility	3,002
Total	57,457



Funds from Other Sources (FY2018)

Unit: thousand yen

Categories	Proposals Selected	Research Expense
Grants-in-Aid for Scientific Research	692	1,802,318
Grants & Endowment	1,340	1,549,274
Commissioned Research	365	2,267,330
Cooperative Research with Private Sector	351	551,847
Total	2,748	6,170,769

*Includes Special Coordination Fund to Promote Science and Technology

*Includes endowed courses

*Excludes Kumamoto University Endowment

*Excludes Grant-in-Aid for JSPS Research Fellows

Grants-in-Aid for Scientific Research (FY2018)

Unit: thousand yen

Categories	Proposals Selected	*Research Expense
Grant-in-Aid for Scientific Research on Innovative Areas (Research in a proposed research area)	27	192,681
Grant-in-Aid for Scientific Research (S)	3	116,610
Grant-in-Aid for Scientific Research (A)	10	85,020
Grant-in-Aid for Scientific Research (B)	96	472,290
Grant-in-Aid for Scientific Research (C)	348	474,760
Grant-in-Aid for Challenging Exploratory Research	5	5,590
Grant-in-Aid for Challenging Research (Exploratory)	33	96,850
Grant-in-Aid for Young Scientists (A)	8	40,300
Grant-in-Aid for Young Scientists (B)	73	101,270
Grant-in-Aid for Early-Career Scientists	62	102,918
Grant-in-Aid for Research Activity Start-up	16	21,970
Grant-in-Aid for Publication of Scientific Research Results	0	0
Fund for the Promotion of Joint International Research (Fostering Joint International Research (A))	3	35,100
Fund for the Promotion of Joint International Research (Fostering Joint International Research (B))	2	8,060
Grant-in-Aid for JSPS Fellows	40	42,380
Total	726	1,795,799

*Includes overhead costs

INTERNATIONAL HOUSE

Kumamoto University International House Residence A was constructed in 1985 to provide accommodation for international students and foreign researchers. To respond to the increase in the number of foreign students and researchers, Residence B was built in 1995, followed by Residences C, D and E in November 2009. The I-House office in Residence A is available to respond to questions from residents and to provide consultation and assistance.

Address: 7-763 Kurokami, Chuo-ku, Kumamoto City, Kumamoto 860-0862

Location: About 1.5 km east of the Kurokami Campus

Residence	Room Type				Total
	Family	Couple	Single	Shared (quad)	
A	3	3	49		55
B	4	3	50		57
C				36	36
D				36	36
E			48		48
Total number of rooms	7	6	147	72	232



Common Facilities

Lounge	2
Conference room	1
Japanese-style room	1
Public Lobby	1
Multipurpose room	1
Laundry room	10

RESIDENCE HALLS

Student resident halls are available to provide a living environment conducive to study for undergraduates attending the university from within Japan and overseas.

Location: About 1.5 km east of the Kurokami Campus

Maximum capacity

Men	200
Women	80
Total	280



HEALTH CARE CENTER

The Health Care Center provides routine and special medical checkups, offers students guidance concerning their health, school life, studies and current path as well as responding in the event of an emergency.

CAFETERIAS AND SHOPS

Kurokami North	Student Hall	Cafeteria and Book Store (food, books, stationery, entertainment counter)
	Kusunoki Hall	Cafeteria/Reception Room/ Japanese-style Rooms/Lodging Rooms
Kurokami South	FORICO	Cafeteria and Convenience Store (food, books, stationery, entertainment counter)
Honjo	Student Union "Kaiju"	Cafeteria/Kiosk
Oe	Banjikan Hall	Cafeteria/Kiosk



SPORTS FACILITIES

Kurokami	Track and field stadium, rugby pitch, soccer field, tennis courts, swimming pool, gymnasium, athletic equipment storage
Toroku*	Baseball ground, tennis courts, archery range, Japanese archery range, gymnasium, driving practice field, training camp building, athletic equipment storage
Honjo	Tennis courts, gymnasium (including a martial arts hall)
Oe	Athletic field, tennis courts, gymnasium
Misumi	Yacht boathouse, training camp building
Hirogi	Rowboat boathouse

*Mainly used for extra-curricular activities



1756 Saishunkan established (Origin of School of Medicine and University Hospital)

1874 Kumamoto Teachers College established

1885 Kumamoto Pharmaceutical College established

1887 The Fifth High School established

1896 Kumamoto Medical College established

1897 Kumamoto Technical College established

There were five institutions of higher education in Kumamoto during the Meiji Era which eventually united to form Kumamoto University. Among these institutions was The Fifth High School, which was a center for higher learning in western Japan, and provided students with preparatory education to enter the Japanese Imperial Universities. A number of foreign teachers joined the school to offer western culture and knowledge to the students.

These young men, aged from their teens to late twenties, resided in a dormitory, and built a tradition of student community as well as lasting friendships.

1949 Kumamoto University established

Kumamoto University was established under the National School Establishment Law that reformed the preceding Japanese educational system. The new university incorporated the older institutions described above.

At its establishment, The Fifth High School comprised six departments, with an enrollment of approximately 1,100 students.

Discussion of the school's curriculum began soon after the founding of the school. After the Graduate School of Medicine was established in 1955, other graduate schools were subsequently established within the university.

The establishment of research and education institutions within the university was started early on. In the 1950s, both Kumamoto University Hospital and the University Library were completed. In addition, a number of research centers that conduct the highest level of scholarly research have been consecutively established over the past 20 years.

2004 Kumamoto University enters the 21st Century

The acceptance of government-sponsored international exchange students started around 1960, but records indicate that several international exchange students studied in the Faculty of Medicine as early as the 1950s. Since the 1960s, though, the number of international students has been steadily increasing. There were approximately 50 international students at the university in 1984, and that number increased to over 300 twenty years later in 2004.

Since Kumamoto University became a National University Corporation in 2004, the university has been ushering in an era of change. Nevertheless, the university will still continue to strive for further advancements in education, research, and medical care based on the knowledge and experience it has gained since it was first established, in order to contribute to society in the 21st century.



HISTORY OF THE UNIVERSITY HOSPITAL

The history of Kumamoto University Hospital goes back to the opening of the Hosokawa Clan Hospital in 1870. After being reorganized and relocated several times, the hospital was moved to its current location in 1901.

In 1949, after Kumamoto Medical College was absorbed into Kumamoto University, the name of the hospital was changed to Kumamoto University Hospital. It started with a system of eleven medical departments.

In the past several decades, in order to respond to the segmentation and advancement of medical services, the hospital established central consultation facilities as well as new medical departments with the aim of increasing efficiency, among other improvements.

Kumamoto University Hospital has grown to become a general hospital with technologically advanced medical facilities and a comprehensive medical system. It is still continuing to make advancements in its aim to become a university hospital that can continue to provide quality medical care in the 21st century.



HISTORICAL FIGURES



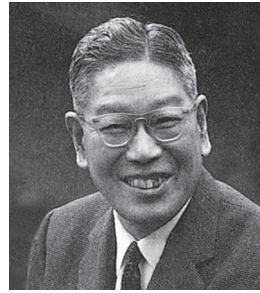
Lafcadio Hearn
(1850-1904)

Though he was of Irish extraction, he was born in Greece. He came to Japan in 1890. In 1891, he took up his new post at The Fifth High School. His work "Ghost Stories" ("*Kaidan*") introduces Japan's mysterious traditions in English, and is widely known.



Natsume, Soseki
(1867-1916)

In 1896, he came to Kumamoto to take up his new post as a lecturer at The Fifth High School. He was residing in Kumamoto during the time he went on the trip that appears in his famous novel "*Kusamakura*".



Ikeda, Hayato
(1899-1965)

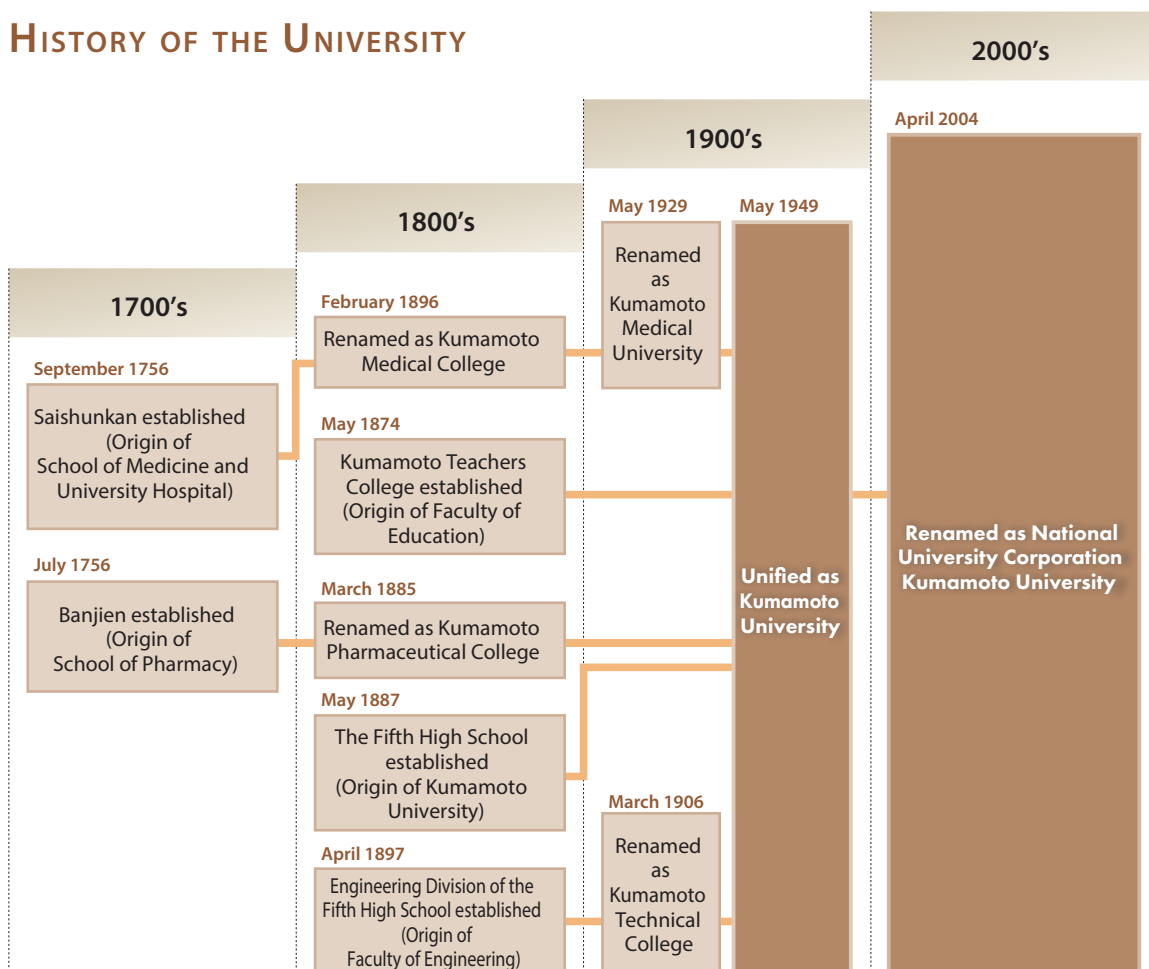
Hayato Ikeda was a politician who was born in Hiroshima prefecture and studied at The Fifth High School. He became the Prime Minister of Japan in 1960, and his administration led Japan for a prolonged time during its era of high economic growth.



Sato, Eisaku
(1901-1975)

Eisaku Sato was a politician who was born in Yamaguchi prefecture and studied at The Fifth High School. He became the Prime Minister of Japan in 1964, and played a key role in the return of Okinawa to Japanese rule and the creation of Japan's "Three Non-Nuclear Principles." He received the Nobel Peace Prize in 1974.

HISTORY OF THE UNIVERSITY



KUROKAMI NORTH CAMPUS



Kurokami North Campus

- 1 Kurokami North N1 (Faculty of Letters/Law Main Bldg.)
- 2 Kurokami North N2 (Faculty of Letters/Law South Bldg.)
- 3 Kurokami North N3 (Graduate School of Social and Cultural Science Bldg. 1)
- 4 Kurokami North N4 (Faculty of Letters/Law Lecture Bldg. B)
- 5 Kurokami North N5 (Graduate School of Social and Cultural Science Bldg. 2)
- 6 Kurokami North N6 (Faculty of Letters/Law North Bldg.)
- 7 Kurokami North N7 (Faculty of Education Music Hall)
- 8 Kurokami North N8 (Faculty of Education Practical Training Laboratory)
- 9 Kurokami North N9 (Faculty of Education West Bldg.)
- 10 Kurokami North N10 (Faculty of Education Main Bldg.)
- 11 Kurokami North N11 (Faculty of Education East Bldg.)
- 12 University Archives
- 13 'Ai Work' Job Café
- 14 Chimeido Hall
- 15 Kusunoki Hall
- 16 Facility and Administration Building
- 17 Kurokami North C1 (Academic Commons Kurokami Bldg. 5)
- 18 The Memorial Museum of the Fifth High School ※
- 19 University Library (Central Building)
- 20 University Library (South Building)/ The Open University of Japan Kumamoto Study Center
- 21 Health Care Center
- 22 North Student Hall Bldg. A (Cafeteria, Bookstore and Shops)
- 23 North Student Hall Bldg. B
- 24 Guard Station
- 25 The Front Gate (The Red Gate) ※
- 26 Kurokami North E1 (General Education Building)
- 27 Kurokami North E2 (Academic Commons Kurokami Bldg. 6)
- 28 Kurokami North E3 (Academic Commons Kurokami Bldg. 6)
- 29 The Chemical Laboratory of the Fifth High School ※
- 30 Environmental Safety Center
- 31 College of Cross-Cultural and Multidisciplinary Studies
- 32 Club Rooms 1
- 33 Kurokami Gymnasium
- 34 Club Rooms 2
- 35 Club Rooms 3
- 36 Athletic Field (Bufugen)
- 37 Swimming Pool
- 38 Kurokami North E8 (Faculty of Education East classrooms)
- 39 Kurokami North E9 (Special Support School Bldg. A)
- 40 Kurokami North E10 (Special Support School Bldg. B)
- 41 Kurokami North E11 (Special Support School Bldg. C)
- 42 Kurokami North E12 (Special Support School Gymnasium)
- 43 Kurokami North E13 ('Suzukake-no-ie' ADL Training House)
- 44 Swimming Pool
- 45 Athletic Field

Special Support School Attached to the Faculty of Education



Kurokami Campus (311, 170m²)

KUROKAMI SOUTH CAMPUS



Kurokami South Campus

46 Kurokami South W1
(Faculty of Engineering Research Bldg. III)

47 Kurokami South W2
(Faculty of Engineering Core Laboratory Bldg.)

48 Kurokami South W3
(Academic Commons Kurokami Bldg. 1)

49 Kurokami South W4
(Faculty of Engineering Research Bldg. II)

50 Kurokami South W5
(Faculty of Engineering Research Bldg. IV)

51 Kurokami South W6 (Machine Shop A)

52 Kurokami South W7 (Machine Shop B)

53 Kurokami South W8
(Creative Engineering and Design Education Laboratory 1)

54 Kurokami South W9
(Creative Engineering and Design Education Laboratory 2)

55 100th Anniversary Hall

56 Kurokami South C1
(Academic Commons Kurokami Bldg. 7)

57 Kurokami South C2
(Faculty of Engineering Bldg. 1)

58 Kurokami South C3
(Faculty of Engineering Research Bldg. 1)

59 Kurokami South C4
(Academic Commons Kurokami Bldg. 2)

60 Kurokami South C5
(Laboratory for Nanostructure Characterization)

61 Kurokami South C6 (Acoustic Laboratory)

62 Kurokami South C7
(Academic Commons Kurokami Bldg. 3)

63 Kurokami South C8 (Faculty of Engineering Bldg. 2)

64 Kurokami South C9
(Center for Management of Information Technologies)

65 University Archives

66 University Hall (Administrative Offices) ■

67 Museum of the Engineering Faculty ※

68 Guard Station

69 Kurokami South E1 (Faculty of Science Bldg. 1&2)

70 Kurokami South E2
(Faculty of Science / Graduate School of Science and Technology Core Research Laboratory Bldg.)

71 Kurokami South E3 (Faculty of Science Bldg. 3)

72 Kurokami South E4 (Faculty of Science Bldg. 4)

73 Kurokami South E5
(Research Building for Science and Technology)

74 Kurokami South E6
(Experimental Building for Science and Technology)

75 Kurokami South E7
(Acoustic Analysis Laboratory for Underwater Environments)

76 Kurokami South E8
(Low Temperature and He Gas Recovery Station)

77 South Student Hall

78 FORICO (Cafeteria and Convenience Store)

79 Kurokami South S1 (Hydraulic Laboratory)

80 Kurokami South S2
(Instrumental Analysis Center for Engineering Research)

81 Kurokami South S3 (Disaster Prevention Laboratory)

82 Kurokami South S4 (Kurokami Radioisotope Laboratory)

83 Kurokami South S5
(Research Center for Buried Cultural Properties)

84 Kurokami South S6 (Venture Laboratory)
(Shock Wave and Condensed Matter Research Building)

85 Kurokami South S7 (Incubation Laboratory)

86 Kurokami South S8 (Shock Wave Laboratory)

87 Kurokami South S9
(Engineering Experimental Laboratories)

88 Kurokami South S10 (MRC Casting Laboratory)
(Magnesium Research Center(MRC))

89 Kurokami South S11
(MRC Forming and Machining Laboratory)

90 Kurokami South S12
(International Research Center for Advanced Science and Technology)

91 Temporary Building D-2

CAMPUS MAPS

※ National Important Cultural Property

■ Registered Tangible Cultural Property

HONJO NORTH, CENTRAL, SOUTH CAMPUS



Honjo North Campus

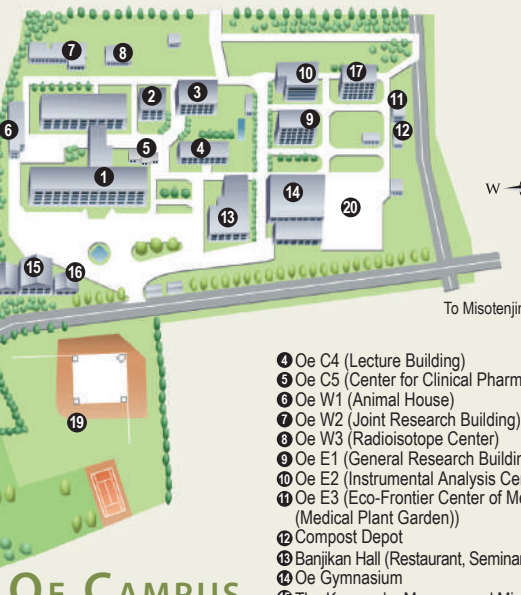
- 1 West Tower
- 2 East Tower
- 3 Central Examination Building
- 4 Outpatient Building
- 5 Administration Building
- 6 Yamasaki Hall ■
- 7 Welfare Facilities
- 8 Facilities Management Building
- 9 Honjo North1 (Clinical Medicine Research Building)
- 10 Honjo North2 (Medical Education & Library Building)
- 11 Honjo North3 (General Medical Research Building)
- 12 Honjo North4 (Basic Research Building)
- 13 Honjo North5 (The Center for Medical Education and Research)
- 14 Multistory Parking Garage 1
- 15 Multistory Parking Garage 2

Honjo Central Campus

- 16 Honjo Central1 (Institute of Resource Development and Analysis (Center for Animal Resources and Development))
- 17 Honjo Central2 (Joint Research Center for Human Retrovirus Infection, Center for Animal Resources and Development)
- 18 Honjo Central3 (International Research Center for Medical Sciences (IRCMS))
- 19 Honjo Central4 (Lecture Building)
- 20 Honjo Central5 (Institute of Molecular Embryology and Genetics)
- 21 Honjo Central6 (Institute of Resource Development and Analysis (Gene Technology Center / Radioisotope Center))
- 22 Honjo Central7 (Academic Commons Honjo-1)
- 23 Club Room 1
- 24 Club Room 2
- 25 Club Room 3
- 26 Higo Iku Monument Hall

Honjo South Campus

- 27 Student Union "Kaiju"
- 28 Gymnasium
- 29 Honjo South1 (School of Health Sciences Bldg. A, B, C)
- 30 Honjo South2 (Academic Commons Honjo-2)
- 31 Honjo South3 (School of Health Sciences Bldg. E)
- 32 Club Room
- 33 Kobato Nursery



Oe CAMPUS

Oe Campus

- 1 Oe C1 (School of Pharmacy Main Bldg.)
- 2 Oe C2 (Research Laboratory Bldg.)
- 3 Oe C3 (Faculty of Life Sciences Research Laboratory Bldg.)

- 4 Oe C4 (Lecture Building)
- 5 Oe C5 (Center for Clinical Pharmaceutical Sciences)
- 6 Oe W1 (Animal House)
- 7 Oe W2 (Joint Research Building)
- 8 Oe W3 (Radioisotope Center)
- 9 Oe E1 (General Research Building)
- 10 Oe E2 (Instrumental Analysis Center)
- 11 Oe E3 (Eco-Frontier Center of Medical Resources (Medical Plant Garden))
- 12 Compost Depot
- 13 Banjikan Hall (Restaurant, Seminar Room, Liaison Office)
- 14 Oe Gymnasium
- 15 The Kumayaku Museum and Miyamoto Memorial Hall
- 16 School of Pharmacy Resource Center
- 17 Oe E4 (Industrial Innovation Laboratory)
- 18 Staff Residence
- 19 Athletic Field
- 20 Medicinal Plant Garden



Honjo North, Central, South Campus (135,815m²)



Oe Campus (53,352m²)



The Kumamoto Area

Kumamoto University is located in the city of Kumamoto in Kyushu, the southern-most main island of Japan. Kumamoto City is the third biggest city in Kyushu. It has a population of approximately 740,000, which is equivalent to about 41% of the total population of the prefecture. By air it takes 90 minutes from Tokyo and 60 minutes from Osaka; by Kyushu Shinkansen it takes 40 minutes from Fukuoka City.

The weather is generally mild, though there is a rainy season from early June to mid-July, followed by a subtropically hot summer season. Autumn and spring offer the most comfortable weather. Warm clothing is necessary in January and February. It seldom snows even in midwinter, and never more than a few centimeters.

Known for its abundance of trees and greenery, Kumamoto is one of Japan's oldest cities. While offering the latest in modern facilities, Kumamoto has managed to retain a purity and simplicity of old Japanese customs, flavor, and spirit which make it an interesting place to visit and a delightful place to live.

Local attractions include Kumamoto Castle, one of the oldest and grandest medieval castles in Japan; Kumamoto downtown area, located 10-15 minutes away from Kumamoto University by bicycle and known for a lot of office building and shopping streets; the Amakusa Islands, a chain of 120 islands known for their exciting Christian history and plenty of rich nature; and Aso National Park, crowned by the active volcano Mt. Aso, with the largest caldera volcano in the world. Because of its proximity to Mt. Aso, the Kumamoto area also has an

abundance of natural hot springs. Kumamoto is also well-known in Japan for its delicious drinking water. Because the rainfall that soaks into the ground in the mountains of the Aso region takes many years to come out, one can always be able to drink delicious water.



Kumamoto University
2-39-1 Kurokami, Chuo-ku, Kumamoto 860-8555 JAPAN
<http://ewww.kumamoto-u.ac.jp/>