



Kumamoto University

2018-2019



# Table of Contents

---

|                       |   |
|-----------------------|---|
| <b>1 Introduction</b> | <b>1</b> Message from the President<br><b>2</b> Vision and Goals<br><b>3</b> Organization |
|-----------------------|---|

---

|                                |  |
|--------------------------------|--|
| <b>2 Faculties and Schools</b> | <b>4</b> Faculty of Letters<br><b>5</b> Faculty of Law / Faculty of Humanities and Social Sciences<br><b>6</b> Graduate School of Social and Cultural Sciences<br><b>7</b> School of Law<br><b>8-9</b> Faculty of Education / Graduate School of Education / Graduate School of Teacher Education<br><b>10</b> Faculty of Science<br><b>11</b> Faculty of Engineering<br><b>12-13</b> Faculty of Advanced Science and Technology / Graduate School of Science and Technology<br><b>14-15</b> School of Medicine / Graduate School of Medical Sciences / Graduate School of Health Sciences<br><b>16-17</b> School of Pharmacy / Graduate School of Pharmaceutical Sciences<br><b>18</b> Faculty of Life Sciences<br><b>19</b> Undergraduate and Graduate Courses |
|--------------------------------|--|

---

|                                 |   |
|---------------------------------|---|
| <b>3 Centers and Institutes</b> | <b>20</b> Institute of Molecular Embryology and Genetics / Institute of Pulsed Power Science / Priority Organization for Innovation and Excellence<br><b>21</b> Organization for Globalization / Headquarters for Admissions and Education / International Research Center for Medical Sciences (IRCMS) / International Research Organization for Advanced Science and Technology (IROAST)<br><b>22</b> Center for Management of Information Technologies / College of Cross-Cultural and Multidisciplinary Studies / Kumamoto Innovative Development Organization (KIDO) / Research Center for Instructional Systems<br><b>23</b> Eisei-Bunko Research Center / Center for Water Cycle, Marine Environment, and Disaster Management (CWMD) / The Memorial Museum of the Fifth High School<br><b>24</b> Magnesium Research Center (MRC) / Institute of Resource Development and Analysis / Center for AIDS Research / University Archives<br><b>25</b> Environmental Safety Center / Research Center for Buried Cultural Properties / Health Care Center / Student Accessibility Support Room<br><b>26</b> University Hospital<br><b>27</b> University Library<br><b>28-29</b> Local and Overseas Offices |
|---------------------------------|---|

---

|   |   |
|---|---|
| <b>4 Academic and Research Projects</b> | <b>30</b> Top Global University Project<br><b>31</b> Center of Community Project / Program for Promoting Regional Revitalization by Universities as Centers of Community (COC+)<br><b>32</b> Program for Promoting the Enhancement of Research Universities<br><b>33</b> Advanced Research Projects<br><b>34-35</b> Kumamoto University Excellent Research Projects / Kumamoto University Challenging Research Projects |
|---|---|

---

|                                  |   |
|----------------------------------|---|
| <b>5 International Exchanges</b> | <b>36-39</b> International Exchange Agreements<br><b>40</b> Researchers and Scholars Exchanges<br><b>41</b> International Students<br><b>42</b> Japanese Students Abroad / International House<br><b>43-44</b> International Programs / Japanese Language Classes / Kumamoto University Summer and Spring Program<br><b>45</b> International Activities |
|----------------------------------|---|

---

|                |  |
|----------------|--|
| <b>6 Facts</b> | <b>46</b> Administrative Officers<br><b>47</b> Number of University Personnel<br><b>48</b> Student Enrollment / Student Financial Aid<br><b>49</b> Student Admission / Student Tuitions And Fees<br><b>50</b> Degrees Awarded / After Graduation<br><b>51</b> Budget Breakdown |
|----------------|--|

---

|                 |  |
|-----------------|--|
| <b>7 Access</b> | <b>52-54</b> Campus Maps<br><b>55</b> Location |
|-----------------|--|

---

|                  |  |
|------------------|--|
| <b>8 History</b> | <b>56-57</b> History<br><b>58</b> Kumamoto University Museums<br><b>59</b> The Kumamoto Area |
|------------------|--|



## Message from the President

**HARADA Shinji**

President of Kumamoto University

**W**elcome to Kumamoto University (KU). Kumamoto is located in the center of Kyushu Island in Japan and is rich in nature. We have the large volcanic Aso mountain range in the eastern part of Kumamoto Prefecture. In the west, there is the picturesque Amakusa seashore with small islands connected by 5 bridges. KU is situated in Kumamoto City where historic Kumamoto castle is surrounded by trees. For this reason, the city is called FOREST CITY. We have a hill clad in fresh greenery behind the KU campus, giving us a tranquil atmosphere for studying. Kumamoto is also known for its high quality fresh water springs, which provide drinking water to the residents. These are some reasons I feel confident that visitors and international students in Kumamoto can have an enjoyable and high quality life.

KU is one of the oldest universities in Japan with seven faculties, eleven graduate schools and 23 research centers/institutes (as of August 2018) that support a wide spectrum of educational and research activities. Currently, the university is home to around 8,000 undergraduate students and 2,000 graduate students, including 522 international students from 51 countries (as of May 2018). For over 100 years our university has been at the forefront of culture, advancing science and technology, and contributing to the development of the Japanese educational system. Recently, we have been selected by the Ministry of Education, Culture, Sports, Science and Technology (MEXT) for

the following 3 projects; the Program for Promoting the Enhancement of Research Universities, the Top Global University Project and the Center of Community Project. Consequently, KU will be seeing increased internationalization brought about by international academic and student exchange programs (as of September 1, 2018, we have partnered with 246 institutes from 51 countries and regions), global-collaboration research programs with the world's leading researchers, and other such international activities. The short-term international student exchange programs are conducted at both KU and our partner universities. Through these activities, KU has been contributing to local communities and to global society.

We seek to cultivate an open mind with a broad view, a creative imagination, the ability to solve problems, and the aptitude to communicate internationally. We believe this policy will ensure that many competent professionals and leaders of future societies will emanate from our university.

I hope this book helps you to learn more about Kumamoto University and its activities.

# 創造の森 挑戦の炎



“Forest of Creative Power, Blaze of Challenging Spirit”

Kumamoto University (KU), a globally active research university with roots in local communities, has adopted a motto that symbolizes the university’s unique attributes and expresses its essential quality: “KU Spirit.”

## VISION

Kumamoto University aims to contribute to the community and global society by cultivating intelligent, moral, and skillful people, while working for the creation, inheritance, and development of knowledge, following the spirit of the Fundamental Law of Education and the School Education Law.

## GOALS

### Education

In order to cultivate unique, creative people, the university provides a comprehensive education based on a consistent philosophy followed by all of our undergraduate departments and graduate schools.

Our undergraduate departments, with the help of a broad education, inculcate in students the abilities of international communication, adapting to the information age, and thinking and acting independently.

Our graduate schools cultivate highly specialized workers with comprehensive reasoning ability, technical knowledge, and internationally recognized skills, in addition to deep insight into humankind and nature, on the basis of the undergraduate education that our student receive.

As an institution that is open to the public, the university offers a place where people can engage in lifelong learning.

### Research

The university strives to protect and develop humankind’s cultural heritage, while enhancing its capabilities to function as a center of advanced academic research and proactively promote cutting-edge, creative academic research.

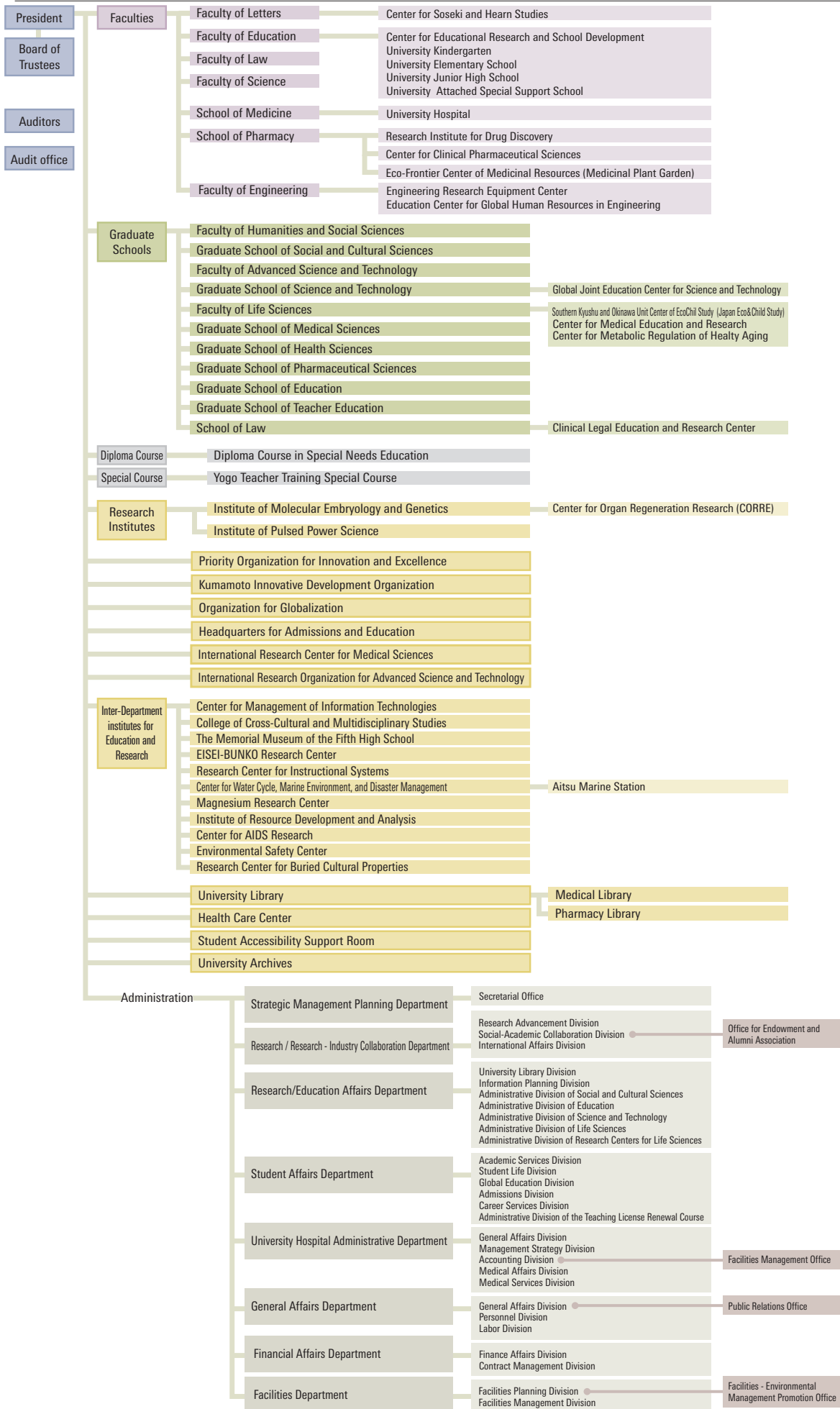
In addition, by making use of its unique features, comprehensively deepening knowledge in the fields of human science, social science, and natural science, as well as promoting interdisciplinary research, Kumamoto University is working to contribute to the harmonious coexistence of humans and the environment, as well as sustainable societal development.

### Contributions to local and global communities

As a university located in a regional hub city, the university will strengthen its cooperation with the local community and serve the functions of being a central research facility and cultivating leaders in the local community. By striving to convey our academic culture to the world, the university will contribute to the promotion of local industry and to advancing the provision of information about the culture.

In addition, the university strives to promote international intellectual exchange, educate international students, and train graduate students capable of producing a bilateral international exchange.

# ORGANIZATION





### Faculty of Letters

- **Department of Integrated Human Studies**  
Human Sciences, Socio-human Studies, Regional Science
- **Department of History**  
Japanese History and Archaeology, The Modern World System
- **Department of Literature**  
East-Asian Languages and Literature, Euro-American Languages and Literature, Transregional Studies of Language and Literature
- **Department of Communication and Information Studies**  
Communication and Information Studies

### Faculty of Letters

The Faculty of Letters was established in May 1949 as part of the new Faculty of Law and Letters. This faculty was then split into the Faculty of Law and the Faculty of Letters in 1979. The education and research framework of the Faculty of Letters consists of four educational departments, which are the Department of Integrated Human Studies, the Department of History, the Department of Literature, and the Department of Communications and Information Studies. The Faculty welcomes 170 new students each year. Approximately 70 faculty members are conducting academic research in a broad number of areas, including the humanities, social studies, and cultural studies.

To satisfy new and contemporary needs, three interdisciplinary courses that made use of an existent educational system for cross-disciplinary learning were established in 1997. In 2005, these courses were disbanded and the Department of Communication and Information Studies was established. The aim of its establishment is to help students acquire outstanding abilities in international communication using English,

as well as to teach them to excel at processing information. There are numerous international students across the Faculty, which is striving to develop people who can contribute to the international community through various researches.

The Faculty's research activities include aspects of the history and social problems specifically related to Kumamoto prefecture. The EISEI-BUNKO Research Center, an interdepartment institute of Kumamoto University since 2017, was originally established as an affiliate institute of the Faculty of Letters in 2009. The purpose of the Center is to enable analysis of the scholarly values of historical materials in the Hosokawa clan's centuries-old collection, and to promote academic advances of its research. Currently, on-going projects by the Faculty such as archival studies of Minamata disease based on the aggregation of field research data, and literary studies of Meiji era writers who taught in Kumamoto are expected to be recognized as prioritized by the University.

URL: <http://www.let.kumamoto-u.ac.jp/en/>



Faculty of Law

■ Department of Law

Faculty of Law

The Faculty of Law at Kumamoto University has been delivering high quality legal education for almost 70 years. Established in 1949, now with over 840 undergraduate students and around 50 full-time staff, we have evolved into one of the leading departments of law in Japan. We provide a stimulating and supportive environment for undergraduate study. Students are taught in a mixture of large lectures and

small seminar groups where they develop their analytical and critical skills. They may take a course of lectures on Public Law, Private Law and International Law. Alongside the law courses, students enrolled in this Faculty can also learn Economics, Political Science and Conflict Resolution.

URL: <http://www.law.kumamoto-u.ac.jp/en/>

FACULTY OF HUMANITIES AND SOCIAL SCIENCES ■ 人文社会科学研究部 ■

Following the establishment of the Faculty of Life Sciences and the Faculty of Advanced Science and Technology, which arose from the process of a stricter selection focusing on research fields in the graduate school, the Faculty of Humanities and Social Sciences was established on April 1, 2017 by reorganizing the Faculty of Letters, the Faculty of Law, the Graduate School of Social and Cultural Sciences, and the School of Law.

The establishment of the Faculty of Humanities and Social Sciences means that university teaching staff are effectively allocated among the three fields of life sciences, natural sciences and human/social sciences. This realignment makes it possible to work through the rapid population decline among youth and to meet the growing needs of globalization. It also makes it possible to readjust education programs more flexibly, thereby ensuring a quality academic education.

The Faculty of Humanities and Social Sciences aims to contribute academically with practical relevance to

community vitalization, to construct a research hub for human and social science studies in order to actively produce worldwide scholarly achievements, and to promote global level research through active collaboration among members of the human/social science and legal fields. In human science fields such as psychology, history and sociology in particular, the Faculty also intends to augment relationships and cooperation with overseas colleges and universities and bring about greater research achievements internationally, thereby shifting conventional academic culture studies to a more invigorating course infused with international cooperation.

The Faculty is also contributing to the field of conflict resolution by consolidating the research resources of humanities, law and policy in order to establish a solid foundation of international standards in research, and to develop practical areas of research that will be able to respond to the various demands of society.



### Graduate School of Social and Cultural Sciences

- **Master's Course**  
Division of Public Policy Studies, Division of Jurisprudence,  
Division of Modern Social Human Studies, Division of Cultural Sciences,  
Division of Instructional Systems
- **Doctoral Course**  
Division of Human and Social Sciences, Division of Cultural Sciences,  
Division of Instructional Systems

#### Graduate School of Social and Cultural Sciences

The Graduate School of Social and Cultural Sciences was established in April, 2002 as a three-year independent, interdisciplinary and comprehensive Doctoral Program based on specialized fields in the Faculty of Letters and the Faculty of Law. In April, 2006, the Division of Instructional Systems (master's program) which was designed to foster e-learning professionals, was founded. In April, 2008, the new Graduate School of Social and Cultural Sciences, which consists of the Master's Program and the Doctoral Program, was created by reorganizing and integrating the existing Graduate School of Social and Cultural Sciences, the Graduate School of Letters (master's program), the Graduate School of Law (master's program), and the Division of Instructional Systems.

In addition to the traditional academic courses (8 courses), the Master's Program offers 7 newly-founded professional courses, including Public Policy; The Legal Profession; Negotiation, Conflict Resolution, and Organizational Management; East Asian Business Communication; Cultural Adminis-

tration and Curators; Japanese Teaching in senior High Schools; and English Language Teaching. These courses help to realize an education that responds to a wide range of social needs.

The Doctoral Program aims to cultivate highly-specialized professionals and researchers. It is comprised of three divisions. The Human and Social Sciences Division pursues development and policy studies of new social systems, and their theoretical groundings. The Cultural Sciences Division is concerned with research into various aspects of human culture and the formulation of cultural policies for contemporary society. And the third is the Instructional Systems Division. All the three doctoral divisions have been created to open the door for adult students and foreign students, in addition to those who proceed from the Master's Program.

(Notice: The Graduate School of Social and Cultural Sciences will be reorganized in April 2019.)

URL: <http://ewww.kumamoto-u.ac.jp/dept/social/>





### School of Law

#### ■ Legal Professional Course

### School of Law

The School of Law was established in April 2004 for the purpose of training students to become legal professionals who will be active in the 21st century, and who will have the ability to respond to the special legal needs of local communities and to solve various global legal problems. A total of 16 students (including a few students in the shortened two-year course) are accepted into the program each year. The full-time teaching staff of 18 people comprises 4 practitioner-teachers, including practicing lawyers. The School of Law emphasizes the fostering of legal professionals with a process that focuses on education of the law in association with the national bar examination and legal apprenticeships. Classes are separated into four broad categories, which are the fundamentals of theoretical

law, fundamentals of practical law, classes adjoined with the fundamentals of the law, and developing and current subjects. The School of Law's program uses a simulated and systematic education that provides its students with a practical grounding that links together legal theory and legal practice – a distinctive education that can meet the needs of a new legal era.

Clinical Legal Education and Research Center (the Law Center) was established in September 2006 with the purpose of providing education and research that specializes in legal practice.

(Notice: the School of Law is not accepting applicants from the 2016 academic year.)

URL: <http://ewww.kumamoto-u.ac.jp/dept/lr/>

FACULTY OF EDUCATION

GRADUATE SCHOOL OF EDUCATION

GRADUATE SCHOOL OF TEACHER EDUCATION

■ 教育学部 ■

■ 教育学研究科 ■

■ 教職大学院 ■



### Faculty of Education

#### ■ Curricula

Elementary School Teacher, Junior High School Teacher, Special Needs Education Teacher, School Health Teacher.

#### ■ Departments

Japanese, Social Studies, Mathematics, Natural Science, Music, Art, Health and Physical Education, Industrial Technology, Living Sciences, Foreign Languages (English), Special Education, School Health, Pedagogy, Psychology

### Graduate School of Education

Educational Practices Major, School Subject Methods and Practices Major

### Graduate School of Teacher Education

Teacher Training Practices and Development Major

### ■ Faculty of Education

The Faculty of Education was established in May 1949 under the new Kumamoto University system. It originated from schools such as the Kumamoto Teacher's High School created in 1874.

The Faculty of Education currently has four courses. One course trains teachers for the elementary school and junior high school levels, while others train teachers for other types of schools.

In addition, at the Center for Educational Research and School Development, students can receive advice on matters related to educational practice, particularly what to do when problems occur on the job. The Center also engages in practical research.

#### ■ Institution ■

##### Center for Educational Research and School Development

The Center analyzes and seeks practical solutions to the problems that arise in education. It also conducts research on what types of classes and curricula meet contemporary needs. To achieve these aims, it has established an Education Clinic Division, comprised of an Education Consultation Section and an Education Organization Section, and an Education Curriculum Division. It also develops comprehensive, practical activities in cooperation with related organizations.

#### ■ Special Courses ■

##### Diploma Course in Special Needs Education

This course is geared toward incumbent teachers as well as current students from Kumamoto University and toward students with a BA degree or higher from other universities. Through specialized instruction in special needs education, the course helps students to fulfill the requirements for their Diploma and teaching certificate in Special Needs Education.

##### Yogo teacher training special course

This course is meant to produce highly-qualified Yogo teachers. It is designed for those who already have their nursing license, as well as those who are in the process of obtaining it. The curriculum consists of general education subjects, specialized subjects in Yogo teacher and specialized subjects in teaching.

### ■ Graduate School of Education

The Graduate School of Education has offered a master's course program since April 1986. The department currently offers two majors based on the three organizational principles of practical application, interdisciplinary education and current practice: Educational Practices Major - school education (pedagogy and psychology), special needs education, and school health nursing education - and School Subject Methods and Practices Major - Language Education (Japanese and English), Science and Mathematics Education (science and mathematics), Social Science Education (social studies), Technology and Human Life Science (technology education and home economics education), and Arts and Sports Education (music, art, health and physical education). Since the aim of the department is to improve the quality and qualifications of teachers, in-service teachers are also admitted. The school provides instruction in and conducts research on educational practices.

Students who complete the Graduate School of Education course receive a Master of Education degree. Students can also work to receive their teaching certificates.

### ■ Graduate School of Teacher Education

The Graduate School of Teacher Education was newly started in April of 2017, the only major being: Teacher Training Practices and Development.

The purpose of this major is to develop practical skills in teaching, guiding students, and in managing schools themselves, as well as developing the ability to conduct research on these topics.

This major is staffed with both researchers and practitioners.

URL: <https://www.educ.kumamoto-u.ac.jp/?lang=en>



Faculty of Science

■ Department  
Department of Science

■ Courses  
Mathematics, Physics, Chemistry, Earth and Environmental Sciences, Biology

Faculty of Science

The Faculty of Science was established in May 1949 as one of the faculties under the new Kumamoto University system. It grew out of the science department of the Fifth High School, which was established in October 1887, and one part of Kumamoto Kogyo Senmon (Technical) High School. The Faculty of Science underwent some dramatic changes in 2004. The existing departments were merged into one department containing 5 courses. In addition, students are now able to decide what kind of educational program they want during their first two years after entering the university. Then, after accessing what course is right for their own needs, students choose a major in their junior year.

At the same time, the Faculty of Science provides detailed educational services that are tar-

geted to individual students through the implementation of such things as a departmental staff tutoring system.

While conducting fundamental research, which is what they specialize in, the Faculty of Science also actively conducts applied research in specific fields that meets the needs of communities and society. Although the path students take after they graduate usually involves obtaining employment in fields such as the government and other public offices, business, or the teaching profession, many students also choose to continue their education by entering a master's program.

URL:<http://www.sci.kumamoto-u.ac.jp/index.html>



## Faculty of Engineering

- **Department of Civil and Environmental Engineering and Architecture**
  - Civil and Environmental Engineering
  - Urban and Regional Planning and Design
  - Architecture and Building Engineering
- **Department of Mechanical and Mathematical Engineering**
  - Mechanical Engineering
  - Mechanical Systems
  - Applied Mathematics
- **Department of Computer Science and Electrical Engineering**
  - Electrical Engineering
  - Electronic Engineering
  - Computer Science
- **Department of Materials Science and Applied Chemistry**
  - Chemistry and Bioscience
  - Chemistry and Materials
  - Materials Science and Engineering

## Faculty of Engineering

The origin of the Faculty of Engineering was the Department of Engineering of the Fifth High School, which was established in 1897. Since then, the university has turned out more than 30,000 alumni who are working actively all around the world. Thanks to an existing alumni network, graduates have been able to find work with many quality companies. Many other students choose to continue their education in a master's program after they graduate. The goals of the Faculty of Engineering are two-fold. First, it aims to contribute to the well-being of humankind and the development of society by creating the technology to help society coexist with the global environment. The second aim is to foster people with a rich sense of humanity who can contribute to the global and local communities by looking at things from a global point of view.

## Institution

### Engineering Research Equipment Center

Various measuring and testing instruments (LVP-SEM, XRD, ESCA, etc - about 20 models) are made available for advanced experiments and research by allowing their shared use.

### Education Center for Global Human Resources in Engineering

At this center, basic courses (basic engineering, engineering English, COC), fundamental department courses, and sub-education programs (creative engineering and design, global extension, regional revitalization, disaster prevention and mitigation, etc.) are offered to all departments of the Faculty of Engineering.

URL: <https://www.eng.kumamoto-u.ac.jp/english/>

FACULTY OF **ADVANCED SCIENCE and TECHNOLOGY** ■ 先端科学研究部 ■

GRADUATE SCHOOL OF **SCIENCE and TECHNOLOGY** ■ 自然科学教育部 ■



#### Faculty of Advanced Science and Technology (FAST)

Keeping with the trend towards placing priority on graduate school education, and following the establishment of the Faculty of Life Sciences, the Graduate School of Science and Technology was reorganized in April 2016 and the Faculty of Advanced Science and Technology (the organization that the faculty members belong to) was established. Pursuant to this change, the Faculty is responsible for organizational management and the Graduate School is responsible for graduate school education.

The Faculty of Advanced Science and Technology consists of 5 divisions: Natural Science, Materials Science and Chemistry, Industrial Fundamentals, Informatics and Energy, and Social Infrastructure and Environment. There are a total of 31 research fields under these 5 divisions. The Faculty aims to promote advanced natural sciences that will contribute to our coexistence with the global environment and to the sustainable development of society. The Faculty also aims to create an academic

hub for advanced research in applied technologies. Through close cooperation between scientific and engineering departments, we launched this new organization system to promote unique and advanced research and applied research that will respond to social needs. We will endeavor to deepen scientific technology in a comprehensive manner, create new scientific technologies, and promote individualization of the graduate school.

URL:<https://www.fast.kumamoto-u.ac.jp/en/home/>



#### Graduate School of Science and Technology (GSST)

After restructuring in 2006, the Graduate School of Science and Technology became a new research graduate school to conduct post-graduate education with a strong focus on research. GSST now covers 5 departments in the Master's Course and 2 departments in the Doctoral Course. With rapid globalization in international communities, it has become vitally important to promote international

collaboration with overseas universities, both in research and education, as well as collaboration with graduate schools, industry and government institutions in Japan, to be able to provide an international and interdisciplinary environment for the students.

We are committed to fostering students who can approach problems arising out of a wide range of complex issues with leadership and creativity,

and to making GSST an international institution marked by the active creation of knowledge and the free exchange of ideas.

#### ■ Institution ■

#### Global Joint Education Center for Science and Technology (GJEC)

For the future of graduate education, we need to promote globalization and to foster individuals with greater innovation skills through science and technology. To achieve this goal, it is vital that students add depth to their basic skills in their field of specialization and that their innovative skills are

applied with a wider vision. The Global Joint Education Center for Science and Technology (GJEC) was established in GSST in April 2007, and allows students to take courses in different fields to develop innovation skills. In GJEC, we also provide Advanced General Education subjects. These subjects provide students with a broad knowledge of topics across the fields of science and technology, and enhance their application of future academic skills in society.

URL: <https://www.fast.kumamoto-u.ac.jp/gsst-en/>

### Master's Course

|  |  |
|--|--|
| Department of Science  | Mathematics                            |
|  | Physics                                |
|  | Chemistry                              |
|  | Earth and Environmental Sciences       |
|  | Biological Sciences                    |
| Department of Civil and Environmental Engineering and Architecture | Civil and Environmental Engineering    |
|  | Urban and Regional Planning and Design |
|  | Architecture and Building Engineering  |
| Department of Mechanical and Mathematical Engineering              | Mechanical Engineering                 |
|  | Mechanical Systems                     |
|  | Applied Mathematics                    |
| Department of Computer Science and Electrical Engineering          | Electrical Engineering                 |
|  | Electronic Engineering                 |
|  | Computer Science                       |
| Department of Materials Science and Applied Chemistry              | Chemistry and Bioscience               |
|  | Chemistry and Materials                |
|  | Materials Science and Engineering      |

### Doctoral Course

|   |  |
|---|--|
| Department of Science                     | Mathematics                                    |
|   | Physics  |
|   | Chemistry                                      |
|   | Earth and Environmental Sciences               |
|   | Biological Sciences                            |
| Department of Advanced Industrial Science | Environmental Conservation Engineering         |
|   | Environmental Management and Planning          |
|   | Architecture and Environment Planning          |
|   | Building Materials and Structures              |
|   | Advanced Mechanical Systems                    |
|   | Intelligent Mechanical Systems                 |
|   | Applied Mathematics                            |
|   | Computer Science and Communication Engineering |
|   | Frontier Technology for Energy and Devices     |
|   | Human and Environmental Informatics            |
|   | Applied Chemistry and Biochemistry             |
|   | Materials Science and Engineering              |

SCHOOL OF **MEDICINE**

GRADUATE SCHOOL OF **MEDICAL SCIENCES**

GRADUATE SCHOOL OF **HEALTH SCIENCES**

■ 医学部 ■

■ 医学教育部 ■

■ 保健学教育部 ■



### School of Medicine

#### ■ School of Medicine

**Subjects** → Molecular and Cellular Biology, Molecular Genetics, Anatomy and Histology, Physiology and Biochemistry, Microbiology and Immunology, Pathology and Pharmacology, Social and Environmental Medicine, Internal Medicine, Surgery, Developmental Medicine, Bioethics, Sensory and Motor Medicine, Clinical Neurology and Psychiatry, Integrated Medicine

#### ■ School of Health Sciences

**Courses** → Course of Nursing, Course of Radiological Sciences, Course of Medical Laboratory Sciences

### Graduate School of Medical Sciences

#### ■ Master's Course

Medical Sciences

#### ■ Doctoral Course

Medical Sciences

### Graduate School of Health Sciences

#### ■ Master's Course

Health Sciences, Nursing

#### ■ Doctoral Course

Health Sciences, Nursing



### School of Medicine

The School of Medicine comprises the two sub-schools: the six-year School of Medicine and four-year School of Health Sciences. Graduates from the former become medical physicians after passing the National Examination for Medical Practitioners, while graduates from the latter become nurses, radiological technicians, and clinical technologists after passing the national examination for their specialty.

The School of Medicine has produced over 10,000 graduates since it was established as the independent Kumamoto Medical School in 1896. Specialized instruction in the field of medicine is conducted by faculty members of Medical and Life Sciences. The medical school constructs a curriculum framework that mostly reflects actual medical research and medical care. The curriculum focuses on fostering medical doctors who acquire a high level of personal communication skills. The Center for Medical Education and Research was founded in October 2010 to promote a particular mission for education of medical professionals. This Education Center carries out the research on educational systems, the curriculum reform of medical school, and education of clinical medicine and practical techniques, etc.

The School of Health Sciences was reorganized and established in October 2003 from the College of Allied Health Science (which includes the advanced course for Midwifery) and Nursing teacher training course of Faculty of Education. The school aims to provide a spiritually rich education based on respect for life and humanity, along with a high level of specialized knowledge, and is cultivating medical staff, researchers, and educators that are highly-qualified to be able to contribute to many facets of society as members of medical teams.

URL: <http://www.medphas.kumamoto-u.ac.jp/en/medical/index.html>

### Graduate School of Medical Sciences

The Graduate School of Medical Sciences was re-modeled and established in April 2003 as a graduate school educational institution with the aim of cultivating medical researchers, educators, and advanced medical staff.

The graduate school consists of a four-year doctoral course and a two-year master's course that was established in 2002. The master's course (in Medical Sciences) was created in response to the upsurge in medical and biological research, as well as societal needs. The course is designed for graduates of 4-year undergraduate programs. Each academic year sees 20 students enrolled, for a total of 40 students. Graduates of the master's course are encouraged to continue their education by enrolling in the doctoral course. The doctoral course (Medical Sciences specialty) contains 88 students per aca-

demical grade, for a total of 352 students. Personalized education with research guidance is supplemented by courses in experimental medicine and graduate school seminars. Students complete the course by publishing their original research results in an international academic journal and writing a comprehensive thesis.

The graduate school has many special courses and programs such as an educational course for researchers on translational research for eradication of AIDS, an educational course for research frontiers on AIDS, a course for researchers of developmental biology and regenerative medicine, a cancer professional training program, a program for experts of metabolism, circulation and related informatics, a HIGO program, Kumamoto University program for Leading Graduate School, and Shibasaburo program, a unique MD/PhD course. The school has concluded the academic exchange agreement including double degree program with many universities overseas.

All courses are taught by instructors who belong to approximately 90 diverse research areas and medical care fields from the following: the Faculty of Life Sciences, Kumamoto University Hospital, the Health Care Center, the Institute of Resource Development and Analysis, the Center for AIDS Research, the Institute of Molecular Embryology and Genetics, the International Research Center for Medical Sciences, and the Center for Metabolic Regulation of Healthy Aging.

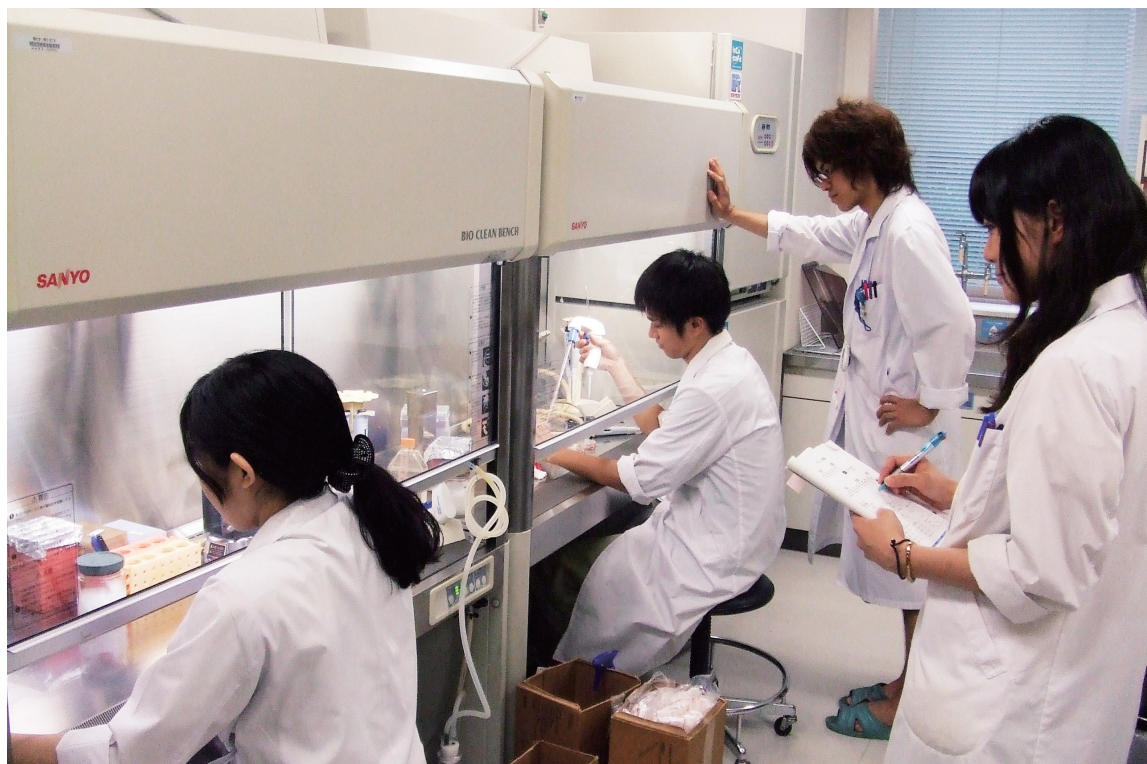
URL: <http://www.medphas.kumamoto-u.ac.jp/en/medgrad/>

### Graduate School of Health Sciences

The Graduate School of Health Sciences was established in April 2008, and its doctoral program started in April 2010. The graduate school consists of the nursing course, the radiological sciences course and the medical laboratory sciences course. The school aims to foster specialists and produce researchers and educators who can incorporate a wide range of advanced medical knowledge to establish and develop the educational system of health sciences. Each department requires 2 years of study for the master's program and 3 years for the doctoral program. Each academic year of the master's program has room for a total of 24 students. Students can obtain a master's degree in either Health Sciences or Nursing.

Each academic year of the doctoral program is limited to 6 students. Conditions for completion of the doctoral program require a successful review of a doctoral thesis and a passing grade on the final examination. Students can obtain a doctor's degree in either Health Sciences or Nursing.

URL: <http://www.hs.kumamoto-u.ac.jp/en/>



### School of Pharmacy

- **Department**  
School of Pharmacy, School of Pharmaceutical and Life Sciences
- **Subject**  
Molecular and Genomic Pharmacy, Medicinal Chemistry, Life and Environmental Sciences, Clinical Pharmacy, Biomedical Polymer Sciences, Drug Delivery Sciences

### Graduate School of Pharmaceutical Sciences

- **Master's Course**  
Pharmaceutical and Life Sciences → Drug Delivery, Bio-Pharma, Medicinal Chemistry, Life Science
- **Doctoral Course**  
Clinical Pharmacy → Pharmaceutical Health Care and Sciences, Clinical Pharmaceutical Sciences  
Pharmaceutical and Life Sciences → Drug Delivery, Bio-Pharma, Medicinal Chemistry, Life Science

### School of Pharmacy

The School of Pharmacy is based upon the principle that the pharmaceutical sciences are the integrated science contributing greatly to human health through medication. Students acquire a basic knowledge relating to the development, production and management of pharmaceutical products, environmental and health science as well as many other skills required for pharmacists. The school aims to cultivate creative graduates with high pharmaceutical scientific

and ethical abilities based on life sciences. The school conducts basic practical and clinical training together with modern lectures that focus on education, from the three perspectives of knowledge, technique, and bedside manner. After graduating, students go on to work in various fields, as pharmacists in hospitals, pharmacies, pharmaceutical and chemical companies or in government and other public facilities. However, over half of the graduates continue their education at graduate level to become either pharma-

ceutical researchers or advanced pharmacists.

In 2006, the pharmaceutical sciences course was split into the School of Pharmacy, a six-year course for the cultivation of pharmacists, and the School of Pharmaceutical and Life Sciences, a four-year course focusing on the training of researchers.

#### ■ Institutes ■

##### Research Institute for Drug Discovery

The Research Institute for Drug Discovery (RIDD) was created as a research facility and is staffed by members of the Pharmaceutical Sciences faculty at Kumamoto University. RIDD is made up of researchers from various fields connected with drug discovery and development, focusing on the development of novel clinical drugs and the education of outstanding researchers in this field. The first institute of its kind at a Japanese national university, the RIDD comprises four departments - Project Research Department, Private Enterprise Joint Development Department, Local Network Department and Research Support Department. The RIDD works to discover and develop therapeutically beneficial drugs that will bear the label, "Made by Kumamoto University."

##### Center for Clinical Pharmaceutical Sciences

The Center for Clinical Pharmaceutical Sciences (CCPS) was founded as a research and education institute for the Faculty of Pharmaceutical Sciences in April 2008. This facilitated the need for collaboration between the Drug Development Department and the Drugs Improvement Department in the pharmacy school. The CCPS performs this task by providing a Department of Education and a Department of Clinical Research, and is aiming to expand and promote education in the appropriate use of drugs. We welcome the involvement of our regional pharmacists and are committed to conducting research and educational activities that will advance the appropriate use of drugs.

##### Frontier Center for Medicinal Resources and Ecology (Medicinal Plant Garden)

Containing roughly 1,000 varieties of medicinal plants in the specimen and tree garden (3,100m<sup>2</sup>), the Medicinal Plant

Garden contributes to education in Pharmaceutical Science studies. The garden is home to a host of medicinal plants for use in studies and also contains a seedling nursery in the cultivation farm (3,700m<sup>2</sup>). The lab is devoted to the continued research and study of physiologically active materials taken from medicinal plants, genetic maintenance of medicinal plants, and acquisition of medicinal plants and the cultivation of medicinal plants. Seminars offered at the garden detail Kanpo Medicine and medicinal plants. These seminars are open to the general public and students alike.

#### ■ Graduate School of Pharmaceutical Sciences

The Graduate School of Pharmaceutical Sciences was established in April 2003 by partially integrating the faculties of the Institute of Molecular Embryology and Genetics (IMEG) and the Institute of Resource Development and Analysis (IRDA). This was preceded by the creation of the Faculty of Medical and Pharmaceutical Sciences by the merging Medical Sciences and Pharmaceutical Sciences. Graduate students at the Graduate School of Pharmaceutical Sciences are taught by teaching staff from the Faculty of Life Sciences (founded in January 2010 by re-organizing the Faculty of Medical and Pharmaceutical Sciences), IMEG, and IRDA. By taking advantage of the individual strengths of each faculty member, a great number of programs can be provided by faculty members from the pharmaceutical sciences and medical fields cooperating to give special lectures in Bioethics, Genetics, Embryology, Cardiovascular, Metabolisms, and Translational Research, as well as in bioethical and logical diagnostics. In the Graduate School of Pharmaceutical Sciences, education is based on the foundation of basic pharmaceutical knowledge acquired during undergraduate studies.

The school aims to cultivate pharmaceutical researchers and advanced pharmaceutical specialists that can act independently and provide skilled leadership in a wide variety of fields, including bioscience research, the creation of medicinal products, and clinical, environmental and public health administration.

URL:<http://www.pharm.kumamoto-u.ac.jp/en/>



**Faculty of Life Sciences**

The explosive growth in life science research in recent years has caused the traditional boundaries between the fields of medical, health science and pharmaceutical research to be substantially diminished. Due to that, and to the striking development of research in the area of interdisciplinary studies, we are now in an era where the integration of these fields has become essential. In order to respond to these developments, the former Graduate Schools of Medical Sciences, of Pharmacy and of Health Sciences were integrated. As a result, a graduate school with a new system that has a separate research department (faculty-only organization) and education department (educational organization) was established in April 2003. The faculty of Life Sciences is composed of 3 divisions, 15 major departments, and 76 departments of research, and is one of the largest research-oriented organizations with medical, pharmaceutical and health science university staffs in Japan. In the Division of Integrated Life Sciences, research is conducted with the aim of deepening the understanding of basic knowledge and theory in the fields of medicine, health science and pharmacy. In the Division of Advanced Biomedical Sciences, advanced research in the field of life sciences is conducted in

such areas as transplantation therapy and new drug development. In the Division of Environmental and Sociomedical Sciences, along with scientific investigation of the link between both society and medicine/ pharmacy as well as between disease and the environment, leading research related to life theory is conducted. The mission of the Faculty of Life Sciences is to contribute to the health and well-being of mankind through research and education related to life sciences and medical care

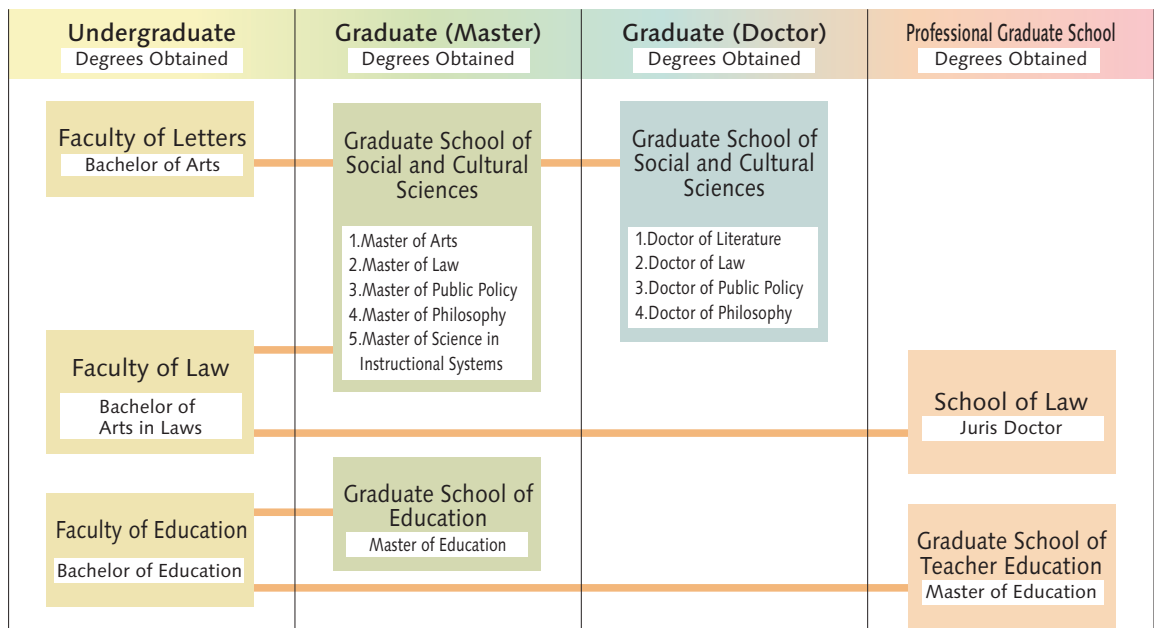
URL:

<http://www.medphas.kumamoto-u.ac.jp/en/faculty/index.html>



# UNDERGRADUATE AND GRADUATE COURSES

## Humanities and Social Sciences

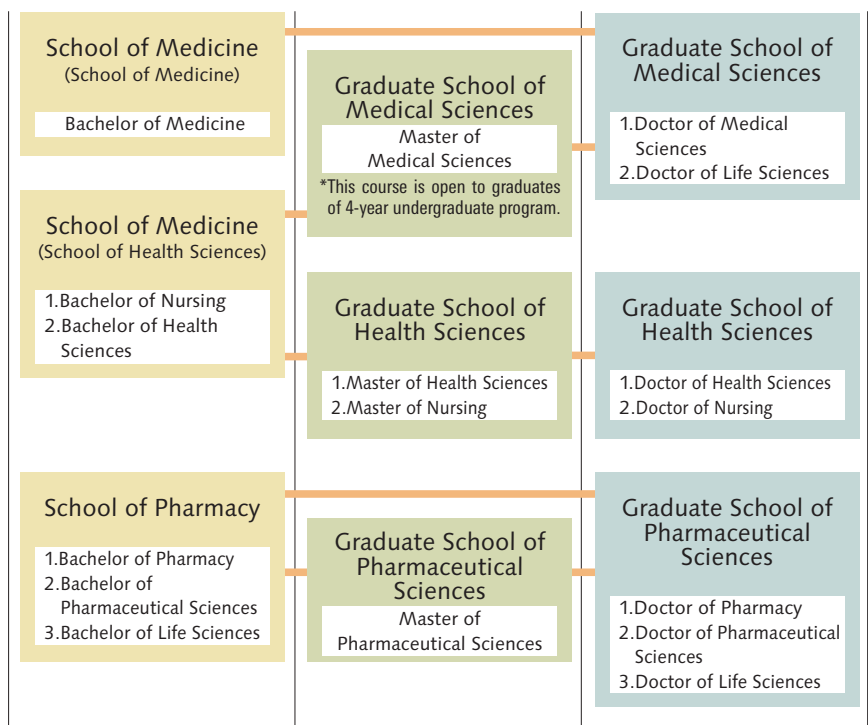


The Graduate School of Social and Cultural Sciences will be reorganized in April 2019.

## Science and Technology



## Life Sciences



The above chart is an example of pursuing higher education between undergraduate and graduate courses, but is not comprehensive.

## Centers and Institutes

### Institute of Molecular Embryology and Genetics

発生医学研究所



The Institute of Molecular Embryology and Genetics aims to contribute to society by promoting the integration of life and medical sciences from the viewpoint of developmental biology. This institute was founded in 1992, and extensively reorganized in 2000 and 2009. It has three divisions (Developmental Regulation, Stem Cell Research, and Organogenesis) consisting of 12 laboratories. Our research interests include: epigenetics, chromosome and protein regulation, DNA damage and repair, intercellular communications, ES and iPS cells, mesenchymal stem cells, hematopoietic differentiation, gametogenesis, brain morphogenesis, and kidney development. The 21st Century Center-of-Excellence (COE) Program (2002-2006), followed by the global COE Program (2007-2011), promoted the outstanding research and educational activities in the Institute. In addition, the Center for Organ Regeneration Research was launched in 2012 to realize regenerative medicine through scientific collaborations with the University Hospital. Furthermore, the Institute is selected as one of the Joint Usage/Research Centers in Japan, and supports the research community.

URL: <http://www.imeg.kumamoto-u.ac.jp/en/>

### Institute of Pulsed Power Science

パルスパワー科学研究所



Pulsed power is an instantaneous form of energy which, when temporally compressed, can exert a tremendous amount of electricity and power. In order to find solutions for various problems the international community is reaching for goals such as the realization of a society which is safe and secure, which fosters environmental protection and recycling, and which advances medicine and social welfare. We conduct development of pulsed power science and technology and work to resolve issues from the viewpoint of pulse power technology. In our international research environment, we produce global leaders with interdisciplinary skills. As a world-leading research center for pulsed power science and technology and related fields, and as an organization that will be at the global forefront in the creation of multidisciplinary human resources and innovation, we aim to grow as an institute that is a credit to Kumamoto, to Japan, and to the world.

URL: <http://www.ipp.kumamoto-u.ac.jp/index-e.html>

### Priority Organization for Innovation and Excellence

大学院先導機構



The Priority Organization for Innovation and Excellence was established to contribute to the enhancement and development of educational research activities at Kumamoto University. It does so by enriching and improving the graduate schools, and by promoting the world's most advanced COE (Center of Excellence) Studies Program; a highly evaluated program that encompasses life science, natural science, social and cultural sciences and interdisciplinary, multiple, or new disciplines base on organic cooperation between the fundamental sciences and the applied sciences. This has brought the creation of the new COE, a new research center and several new graduate courses (majors).

URL: <http://poie.kumamoto-u.ac.jp/en/>

## Organization for Globalization

グローバル推進機構

In 2014, Kumamoto University was chosen by the Ministry of Education, Culture, Sports, Science, and Technology (MEXT) as a member of the “Top Global University Project”, as a leading model to lead university reform in Japan, cultivate global human resources leadership, and actively promote globalization efforts at home and abroad.

The Organization for Globalization was established on March 1, 2015 to address university-wide globalization. The Organization for Globalization was reorganized to establish the vice president as Director in April, 2018, to further strengthen globalization efforts in Kumamoto University.

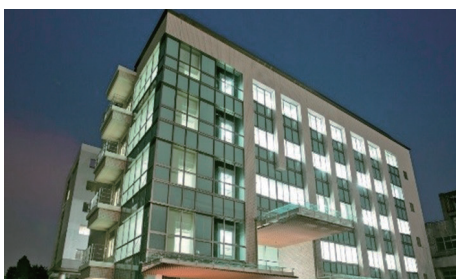
## Headquarters for Admissions and Education

大学教育統括管理運営機構

The Headquarters for Admissions and Education serves as a high governance organization to supervise quality control of higher education in Kumamoto University. Dealing with a changing entrance examination system and supporting students who are entering Kumamoto University during these changes, this organization constructs, supervises, and manages educational programs based on the analyses of enormous volume of educational data and in accordance with the vision, policy and strategy of the university as a core organization.

## International Research Center for Medical Sciences (IRCMS)

国際先端医学研究機構



The International Research Center for Medical Sciences (IRCMS) was launched as the managing organization in April of 2015 to oversee Kumamoto University’s Center of Excellence for world-class research in the life sciences. The center partners with other life science institutes in Kumamoto University to promote collaborative international research with distinguished research institutes overseas, and scouts and trains young investigators who contribute to groundbreaking discoveries in the medical sciences.

The center aims for 50% foreign researcher population, including Ph.D. graduate students. To reach this goal, the research environment within the IRCMS is equivalent to world-class research institutes found in western countries, and makes provisions for smooth international research collaborations.

The center has designated English as the official language, and features an open lab layout with few walls and partitions between labs to facilitate communication among scientists. It is expected that this will promote fusion research between the various fields within the institute.

URL: <http://ircms.kumamoto-u.ac.jp/>

## International Research Organization for Advanced Science and Technology (IROAST)

国際先端科学技術研究機構



The International Research Organization for Advanced Science and Technology (IROAST), which launched in April of 2016, is a Center of Excellence in Kumamoto University and promotes world class, cutting-edge research in science and technology. It features a standardized international research environment with several established global collaborations, and has adopted a tenure-track based personnel system.

The aim of IROAST is to further international collaborations to expand our research network in specific areas. To achieve this goal, the organization is focused on creating strong researcher networks in four advanced areas: 1. Nano Material Science, 2. Green Energy, 3. Environmental Science, and 4. Advanced Green Bio. English is the official language of the center, which will promote an internationally collaborative environment among the various fields in the institute.

The ultimate goal of IROAST is to produce outstanding researchers who will be world leaders in their respective fields.

URL: <http://iroast.kumamoto-u.ac.jp/>

## Center for Management of Information Technologies

総合情報統括センター



The Center for Management of Information Technologies was established as the central organization to integrate the university computer systems and info-communication networks organically. Our mission is to develop education and research at Kumamoto University through information technology. To achieve the mission, we conduct research on information processing, support information-related research, and provide education on information literacy. We also provide, operate, and maintain computers and network equipment in our university.

URL: <http://www.cc.kumamoto-u.ac.jp/en/>

## College of Cross-Cultural and Multidisciplinary Studies

グローバル教育カレッジ



The College of Cross-Cultural and Multidisciplinary Studies has two differently functioning divisions aimed at realizing Kumamoto University's Top Global University Project: The "Division for Open Global Education" and the "Division for Japanese Language Education". The College of Cross-Cultural and Multidisciplinary Studies will foster and expand a variety of measures, such as the provision of global subjects, the enhancement of Japanese language and culture education, and providing cooperative learning between high schools and the university, in addition to connecting with the local community and local businesses.

URL: <http://www.c3.kumamoto-u.ac.jp/en/>

## Kumamoto Innovative Development Organization (KIDO)

熊本創生推進機構



Kumamoto Innovative Development Organization (KIDO) was established on April 1st, 2017 with the aim of contributing to development of Kumamoto region. And in April, 2018, KIDO was reorganized as an unified consulting department which proposes solutions systematically and strategically to the regional needs and issues in Kumamoto. KIDO has been working actively in the fields of industrial promotion, employment creation, reconstruction from the Kumamoto earthquake in 2016, local problem solving and developing local-oriented human resources.

URL: [https://www.kumamoto-u.ac.jp/kenkyuu\\_sangakurenkei/sangakurenkei/kico](https://www.kumamoto-u.ac.jp/kenkyuu_sangakurenkei/sangakurenkei/kico)

## Research Center for Instructional Systems

教授システム学研究センター

RCiS, the Research Center for Instructional Systems, consists of three research departments and one operations department. The research departments aim to make RCiS a world-leading research center for instructional systems. The operations department is leLD, the Institute for e-Learning Development. RCiS is distinctive in that it offers practical fields inside and outside Kumamoto University, and is developing research on both higher education and vocational education. RCiS, as the first research center in Japan for Instructional Systems, manifests the belief, "When it comes to Instructional Systems or Instructional Design, there's no institution like Kumamoto University." RCiS works in close cooperation with research centers inside and outside Japan. It develops instructional systems and contributes to society through joint research with associate research institutions, which include corporations and higher education institutions, and with associate researchers consisting of graduates of the Graduate School of Instructional Systems in Kumamoto University and elsewhere.

URL: [http://www.rcis.kumamoto-u.ac.jp/en/home\\_en/](http://www.rcis.kumamoto-u.ac.jp/en/home_en/)



## Eisei-Bunko Research Center

永青文庫研究センター



The Eisei-Bunko Research Center was established by the Inter-Department Institutes for Education and Research in April 2017. Its purpose is to help us develop our research on the basis of the results of study and philanthropy. The Eisei-Bunko Research Center is attached to the Faculty of Letters, which was established in 2009.

Research is focused on documents related to the Kumamoto Domain, the Eisei-Bunko Collection. This collection is currently housed at Kumamoto University, and the documents are among the most detailed and extensive daimyo documents available, both in terms of quality and quantity. This is a priority area for research and philan-

thropy unique to Kumamoto University.

Through the general study of the Eisei-Bunko Collection and other documents, the Eisei-Bunko Research Center has organized a solid base for research. The Center also gives back results from its studies to the community through cooperation with cultural administrative organizations. At the same time, we help with the development of human resources who can contribute to the promotion of culture and research with a focus on the humanities and social sciences.

URL: <http://eisei.kumamoto-u.ac.jp/en/>

## Center for Water Cycle, Marine Environment, and Disaster Management (CWMD) くまもと水循環・減災研究教育センター

The Center for Water Cycle, Marine Environment, and Disaster Management (CWMD) was established in April 2017. CWMD consists of four laboratories namely: Water Resource Research Laboratory; Marine Science Laboratory; Disaster Mitigation Laboratory and Urban and Regional Design Laboratory. This center leads research and education in the area of groundwater resources in Kumamoto, marine environment around the Ariake Sea and the Yatsushiro Sea, disaster mitigation, and community design and participation.

### ◆ Water Resource Research Laboratory

Aims to perpetuate the water cycle on the groundwater resource through various research and academic efforts.

### ◆ Marine Science Laboratory

Carries out the research on biodiversity and ecosystems, sustainable development and conservation of marine resources, analysis of environmental changes of the seabed in the coastal areas.

### ◆ Disaster Mitigation Laboratory

Promotes a wide range of research and education in disaster prevention and reduction activities to develop and sustain a disaster resilient society.

### ◆ Urban and Regional Design Laboratory

Works on the development of design and implementation towards a livable, resilient and sustainable region with community and citizens' active participation.

URL: <https://cwmd.kumamoto-u.ac.jp/en/>

## The Memorial Museum of the Fifth High School

熊本大学五高記念館



Photograph by Toru Sakamoto

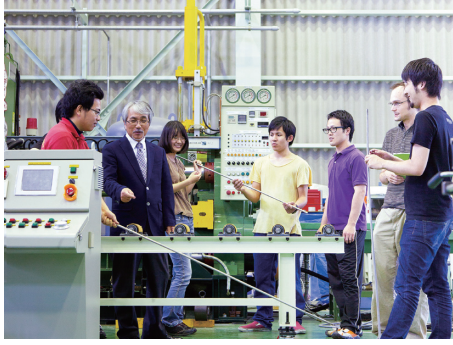
※ It is currently closed because of Kumamoto earthquake in 2016

The Memorial Museum of the Fifth High School is composed of two historic buildings which have been designated as Important Cultural Properties, the main building of the Fifth High School and the Chemical Laboratory. It contains exhibits of historical documents relating to higher education and activities of the Fifth High School along with other relevant artifacts. In addition to these standing exhibits, the Memorial Museum of the Fifth High School offers lectures, lessons on cultural themes, experiential learning meetings, as well as concerts. In addition, the museum serves as a training center for the museum curator training course at Kumamoto University, and also offers reference services. The support of lifelong learning and community activities are central to the mission of the Memorial Museum of the Fifth High School.

URL: <http://www.goko.kumamoto-u.ac.jp/en/>

## Magnesium Research Center (MRC)

先進マグネシウム国際研究センター



For many years, there has been a strong demand in the transportation industry, including automotive, rail and aerospace, for ways to reduce the weight of structural components, in order to reduce both energy consumption and CO<sub>2</sub> emissions. Magnesium is the lightest known structural metal and magnesium alloys are increasingly being used in a wide range of applications for both structural and functional benefits. The Magnesium Research Center (MRC) at Kumamoto University, established in December 2011, has engaged in and dedicated to a variety of magnesium-related research areas. They include alloy and process design, microstructure analysis, mechanical property characterization, corrosion, surface protection and recycling.

MRC has also developed an international magnesium research network. MRC has three missions: 1) to provide state-of-the-art research and education, 2) to develop a global research network, and 3) to promote international research collaboration.

URL: <http://www.mrc.kumamoto-u.ac.jp/en/>

## Institute of Resource Development and Analysis

生命資源研究・支援センター



The Institute of Resource Development and Analysis (IRDA) was established for the purpose of promoting comprehensive education and research in various scientific areas by providing diverse research resources and information. Two major objectives of the IRDA are: 1) Production, development, preservation, and supply of experimental animals, including genetically engineered animals, and construction and analysis of databases using advanced bioinformatics, and phenotype analysis. 2) Research, education, enlightenment, data management and technical support for experiments using animals, genetic materials and radioisotopes.

URL: <http://irda.kuma-u.jp/en/index.html>

## Center for AIDS Research

エイズ学研究センター



The Center for AIDS Research (CAIDS) conducts research on the pathogenesis, treatment, and prevention of AIDS. The center also promotes AIDS research by engaging in international and domestic collaborations. In 2008, our program "Global Education and Research Center Aiming at the Control of AIDS" was selected as one of the global Center of Excellence programs supported by the Ministry of Education, Culture, Sports, Science and Technology. CAIDS also promotes sciences at international level and education for the future global scientific leaders in the field of HIV/AIDS Research via this program.

URL: <http://www.caids.kumamoto-u.ac.jp/aidsnew/englishpage/index.html>

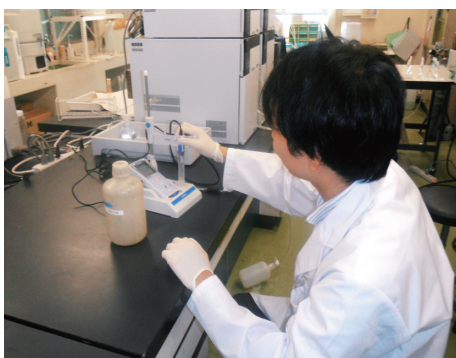
## University Archives

文書館

The University Archives was established on April 1, 2016 to collect and preserve materials related to the history of Kumamoto University or those have social and cultural values around the Kumamoto area. Our main collections are materials on the University history and we also collect materials related to "Minamata Disease" as a serious social, environmental and political problem occurred in Kumamoto prefecture. We conduct the preparation of an inventory and exhibition of the collections for making them accessible for research.

## Environmental Safety Center

環境安全センター



The Environmental Safety Center was established in 2001 to manage environment and safety issues at the university and its surroundings. The center aims to maintain a satisfactory setting for students studying at the university as well as ensure the safety of its staff and students, and in doing so, contribute to the overall promotion of education and research.

The main services of the center are : 1) Safety management and environmental conservation, including chemical management, for students studying at the university, as well as all related education and awareness services. 2) Services related to proper management and disposal of waste products. 3) Services related to environmental measurements such as water quality and atmospheric tests.

URL: <http://www.esc.kumamoto-u.ac.jp/en/>

## Research Center for Buried Cultural Properties

埋蔵文化財調査センター



Photo:  
Potteries excavated from the ruins of the campus(1600 years ago)

The eight campuses of this university are built on top of some of the most famous remains from the Jomon period down to modern times (Kurokamimachi, Honjo, Oe sites among others) in Kumamoto prefecture. Therefore, whenever it is inevitable to dig into the ground for maintenance of the facilities of the campuses (construction or repair of buildings, infrastructure), archaeological excavations are carried out in order to save the remains. This center emerged as one of the Inter-Department Institutes for Education and Research in October 2011 from the Research Office for Buried Cultural Properties, which undertook excavations since 1994. The center's objectives are documentation, preservation and practical use of the excavated cultural properties (sites and finds). Excavation results are presented to the public in annual and other reports, and visitors are always welcome to study the original finds.

URL: <http://ewww.kumamoto-u.ac.jp/dept/maibun/>

## Health Care Center

保健センター



The Health Care Center is located on the Kurokami North Campus. Three physicians, one clinical psychotherapist and three nurses are available during normal school hours for consultation and treatment. Health Care Center provides help in resolving the various troubles, concerns, worries, and illness that can occur during college life. The service is free to all members of the university community.

URL: <http://hcc.kumamoto-u.ac.jp/english/>

## Student Accessibility Support Room

障がい学生支援室

The Student Accessibility Support Room was established on November 1, 2015 to enhance the support system for students with disabilities and to contribute to their unimpeded education along with the enactment of the Act on the Elimination of Disability Discrimination of April 2016. The room receives consultations from students with disabilities and provides the necessary consideration and support for them.

URL: <https://sien.kumamoto-u.ac.jp/en/>

## University Hospital

医学部附属病院



### University Hospital

#### ■ Division of Internal Medicine

Respiratory Medicine, Gastroenterology and Hepatology, Hematology, Rheumatology and Clinical Immunology, Nephrology and Hypertension, Diabetes, Metabolism and Endocrinology, Cardiovascular Medicine, Neurology

#### ■ Division of Surgery

Cardiovascular Surgery, Thoracic Surgery, Gastroenterological Surgery, Breast and Endocrine Surgery, Pediatric Surgery, Transplantation, Urology, Gynecology

#### ■ Division of Child Health and Development

Pediatrics, Obstetrics

#### ■ Division of Sensory and Motor Organs

Orthopaedic Surgery, Dermatology, Plastic and Reconstructive Surgery, Ophthalmology, Otolaryngology-Head and Neck Surgery, Oral and Maxillofacial surgery

#### ■ Division of Radiology

Diagnostic Imaging and Interventional Radiology, Radiation Oncology

#### ■ Division of Anesthesia, Neurosurgery and Psychiatry

Neuropsychiatry, Neurosurgery, Anesthesia

#### ■ Departments

Laboratory Medicine, Surgical Center, Central Radiology, Intensive Care Unit, Central Medical Supply, Rehabilitation, Surgical Pathology, Transfusion Medicine and Cell Therapy, Emergency and General Medicine, Infectious Diseases, Dialysis Center, Endoscopic Diagnostics and Therapeutics, Department of General Clinical Investigation, Department of Medical Informatics and Administrative Planning, Pharmacy, Nursing, Medical Technology, Department of Clinical Nutrition, Department of Medical Quality and Safety Management, Department of Infection Prevention and Control, Administration

#### ■ Centers

Comprehensive Clinical Education, Training and Development Center, Innovation Center for Translational Research, Medical Liaison Center, Perinatal Medical Center, Cancer Center, Medical Engineering Center, Regional Medical Support Center, Transplantation Center

Kumamoto University Hospital comprises medical examination departments, a pharmaceutical department, a nursing department, and central consultation facilities, among other features.

The hospital has 848 beds and over 1,400 outpatients per day. The hospital is currently advancing redevelopment plans such as the opening of a new Outpatient Building in September 2014, with the aim of constructing a university hospital that will be able to handle the medical science and medical care needs of the 21st century. Through this, the hospital is promoting the establishment of a comprehensive medical care system that combines advanced medical treatment and comprehensive holistic medical treatment. As a part of this, the divisions of medical treatment shifted to an overall medical care system categorized by each internal organ and body system starting in January 2004. Additionally, the hospital was designated as a Center of Prefectural Cancer Treatment and Center of Liver Disorder Treatment.

As the only Advanced Treatment Hospital in Kumamoto prefecture, the hospital is now focusing on improving the standards of healthcare for the local community.

#### Mission

Kumamoto University Hospital is dedicated to excellence in patient care, developing improved methods of healthcare, and developing health professionals and students. Members of the staff also contribute communities for their welfare and health.

#### Vision

- ◆ **Patient First:** We are dedicated to excellence in patient care for respecting patient's wishes, anticipations and requests.
- ◆ **Excellence:** We provide high-quality health care in a safe and reliable manner.
- ◆ **Teamwork:** We develop a positive role for health professionals.
- ◆ **Innovation:** We develop and improve the method of healthcare.

#### Patient Rights

- ◆ Right to medical care of good quality
- ◆ Right to information
- ◆ Right to self-determination
- ◆ Right to confidentiality

#### Patient Responsibilities

- ◆ To provide accurate and complete information about your health
- ◆ To follow hospital rules
- ◆ Not to disturb hospital peace

URL: <http://www.kuh.kumamoto-u.ac.jp/en/index.html>

## University Library

附属図書館



The University Library is composed of the Central Library, the Medical Library and the Pharmacy Library. It provides information resources and services to support the University's educational and research activities. The Central Library is open from 8:40 a.m. to 10:00 p.m. from Monday to Friday, and 12:00 p.m. to 6:00 p.m. on Saturdays and Sundays.(except for the vacations)

### Library Holdings (As of March 31st, 2018)

|                  | Books     | Periodicals |
|------------------|-----------|-------------|
| Central Library  | 1,043,323 | 14,942      |
| Medical Library  | 173,278   | 5,292       |
| Pharmacy Library | 39,374    | 1,032       |
| Total            | 1,255,975 | 21,266      |

### Special Collections of Books and Manuscripts

#### 1. The Aso Manuscript Collection

This impressive collection of historical documents, formerly kept at Aso Shrine, contains a wealth of information relating to the Nanbokucho and Kamakura Periods. Of the 1,047 items of this collection, 34 volumes of 304 letters and 36 manuscripts have been designated as Important Cultural Properties.

#### 2. The Hosokawa Manuscript Collection

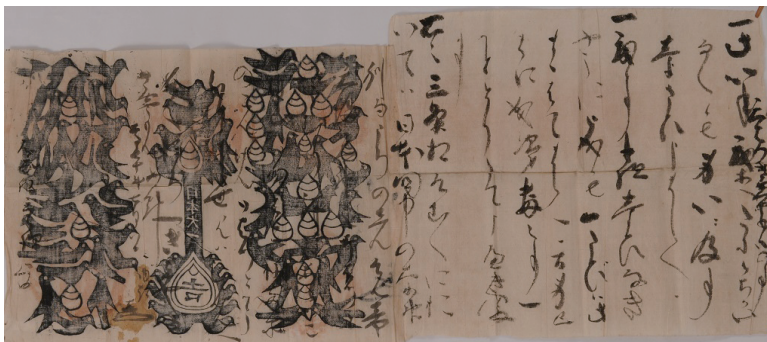
This is the largest collection of primary source materials on the administration of the Hosokawa government (Hosokawa Han), ranging from the Nanbokucho Period to the early Meiji Period.

#### 3. The Lafcadio Hearn Collection

This is an extensive collection of various editions of the works of Lafcadio Hearn and fundamental research materials about Hearn, chiefly in English. It contains his English translations of Anatole France, Gustave Flaubert, and Theophile Gautier.

URL: <http://www.lib.kumamoto-u.ac.jp/eng/howtouse>

Special Collections from the 17th century and Meiji period



Kumamoto University Library  
Official Mascot "KUMAPON"

# LOCAL AND OVERSEAS OFFICES

## Local Offices

### Kumamoto University Tokyo Office

東京オフィス

Established: April 2004

- Scope:
1. Provides support for university-industry collaborations
  2. Offers information regarding the educational research activities of KU to businesses, the government, and other public offices and organizations
  3. Offers information regarding entrance exams to prospective students, and provides support to KU students who are seeking jobs
  4. Collaborates with alumni associations
  5. Conducts seminars and organizes various gatherings

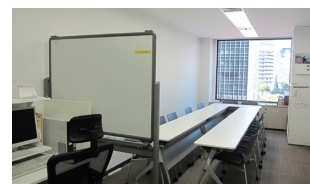


### Kumamoto University Kansai Office

関西オフィス

Established: December 2011

- Scope:
1. Provides support for university-industry collaborations
  2. Offers information regarding the educational research activities of KU to businesses, the government, and other public offices and organizations
  3. Offers information regarding entrance exams to prospective students, and provides support to KU students who are seeking jobs
  4. Collaborates with alumni associations
  5. Conducts seminars and organizes various gatherings



### Kumamoto University Kansai Liaison Office

関西リエゾンオフィス

Established: October 16, 2009

- Scope:
1. Promotes collaboration with industry and government offices in the Kansai region, and promotes technology transfers
  2. Provides technical consultation, and conducts meetings and collaborative research gatherings
  3. Exhibits research processes and engages in public relations activities
  4. Distributes pamphlets and provides information about the entrance exams of KU, and assists students in finding jobs
  5. Collaborates with alumni associations
  6. Conducts seminars and other gatherings

Address: South Facility #2203, Creation Core Higashi Osaka 1-4-1 Aramoto Kita, Higashi Osaka City, Osaka 577-0011, Japan  
E-mail: sangaku-somu@kumamoto-u.ac.jp



## Overseas Offices

### Kumamoto University Liaison Office at KAIST

韓国 KAIST オフィス

Established: September 2008

- Scope:
1. Promotes research collaboration
  2. Supports the joint symposiums of KU and KAIST
  3. Provides information about KU and its entrance exams, and assists with public relations activities

Address: KAIST Biomedical Research Center 291 Daehak-ro (373-1 Guseong-dong), Yuseong-gu, Daejeon 305-701, Korea



### Global Academic-Industry Collaboration Satellite Office in Shandong University 山东大学オフィス(中国)

Kumamoto University and Shandong University (Jinan City, Shandong Province, China) signed a memorandum on March 22, 2010 to mark the establishment of satellite offices to promote personnel exchanges and mutual friendship between the two universities in the field of academic-industry collaboration. Based on this agreement, a KU satellite office was opened in the Department of Academic Research of Shandong University, and a Shandong University satellite office was set up in the Kumamoto University Innovation and Collaboration Center (KUICC).

Established: March 2010

- Scope:
1. Promotes the collaboration of university, industry and government
  2. Promotes academic exchange
  3. Provides information about KU
  4. Functions as a center for KU activities in China



### Kumamoto University Liaison Office at ITS

インドネシア ITS オフィス

Established: April 2010

- Scope:
1. Promotes academic and student exchanges with partner institutions
  2. Cultivates Indonesian students who are interested in studying at KU, and assists students who are preparing to come to KU to study
  3. Promotes international collaboration of the university, industry and government
  4. Provides information about KU and its entrance exams, and assists with public relations activities
  5. Supports alumni activities

Address: ITS International Office Gedung Rektorat Lantai 1 Kampus ITS Keputih-Sukolilo Surabaya Jawa Timur, 60111, Indonesia  
TEL: +62-31-596-6985 E-mail: mia.hernawati.sby@gmail.com



## Kumamoto University Dalian Office

大連オフィス

Established: March 2011

**Scope:**

1. Provides information regarding Japan and KU to students and the faculty of Dalian University of Technology and partner institutions in northern China
2. Builds networks of alumni and other relevant people in northern China
3. Strengthens the relationship with other partner institutions in northern China
4. Promotes KU's various activities in northern China

**Address:** Room 106, Bldg. B, No. 80 Software Park Rd, Dalian 116024, China  
TEL: +86-411-8470-2983



## Kumamoto University Sudan Office

スーダンオフィス

Established: June 2016

**Scope:**

1. Service as a base of research and educational exchange in Africa
2. The dissemination of information on Japan and Kumamoto University to students and academic staff of exchange partner universities in Africa
3. The establishment of a network of alumni and similar groups and persons in Africa
4. Service as a base of Kumamoto University's activities in Africa

**Address:** Faculty of Pharmacy, University of Khartoum. P.O. Box: 1996, Al-Qasr street, Khartoum 11111, Sudan



## Six National Universities Network (SUN) Changchun Joint Office 国立六大学長春共同事務所

As a first joint office of Six National Universities Network (SUN) which consists of Chiba University, Niigata University, Kanazawa University, Okayama University, Nagasaki University and Kumamoto University.

Established: November 2014

**Scope:**

1. Provides information regarding Japan and SUN to students and the faculty of partner institutions in northeastern China
2. Builds networks of alumni and other relevant people in northeastern China
3. Strengthens the relationship with other partner institutions in northeastern China
4. Promotes SUN's various activities in northeastern China

**Address:** Jingyue Campus of Northeast Normal University, Changchun, Jilin, China  
TEL: +86-155-4328-8200



## Six National Universities Network (SUN) European Platform of SixERS

国立六大学欧州事務所

Established as a joint office of six national universities (Chiba Univ., Niigata Univ., Kanazawa Univ., Okayama Univ., Nagasaki Univ. and Kumamoto Univ.)

Established: August 2016

**Scope:**

1. The dissemination of information on academic and cultural ties between Japan and the Netherlands
2. The promotion of partnerships with inter-university networks and international joint educational platforms in the Netherlands and EU
3. The collection of information on local universities
4. The dissemination of information on Japan and the six national universities to students and academic staff of local universities
5. The implementation and operation of six national university joint programs

**Address:** SieboldHuis 5<sup>th</sup> floor, Rapenburg 19, 2311 GE Leiden, The Netherlands



## Six National Universities Network (SUN) Bangkok Office of AP-Six ERS

国立六大学バンコク事務所

Established as the joint office of six national universities (Chiba Univ., Niigata Univ., Kanazawa Univ., Okayama Univ., Nagasaki Univ. and Kumamoto Univ.)

Established: July 2017

**Scope:**

1. Joint implementation of student exchange programs in Thailand and other ASEAN countries
2. Dissemination of information on Japan and the six universities to students and academic staff in Thailand and other ASEAN countries
3. Promotion of international industry-academia-government collaborative programs in Thailand and other ASEAN countries
4. Promotion of exchanges with ASEAN University Network (AUN) member universities

**Address:** KMUTT Knowledge Exchange for Innovation Center (KX) 12F  
110/1 Krung Thonburi Road, Banglamphulung,  
Khlongsan, Bangkok 10600, Thailand



## A Leading University Cultivating Global Leaders from Kumamoto

Kumamoto University has been selected by the Ministry of Education, Culture, Sports, Science and Technology (MEXT) for the 2014 Top Global University Project. Our slogan is “A Leading University Cultivating Global Leaders from Kumamoto,” and, accordingly, we aim to refine our education to shape ourselves into a truly global university. We plan to act as a driving force for globalization in Kumamoto and strive to take our place in the world as a center for research that also contributes to the community.



## The Future of Kumamoto University as a Global University

### 1. An education system highly conducive to internationalism

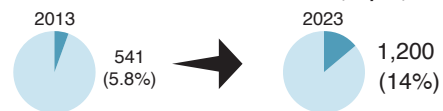
We are introducing a new education system that is compatible with the academic year of other countries and allows graduate students to enroll early or study abroad, and offers flexible credit transfers. This system accelerates an increase of international students and Japanese students who study abroad.

#### Target Figure

##### Number of international students (all year)



##### Number of students who have studied abroad (all year)



### 2. Global atmosphere for the inclusion of international students

We want to enhance our high quality curriculum to students learning about Japanese culture to promote enrollment of international exchange students. Additionally, we will offer a variety of services, including support and advice for exchange students and promotion of international networking events. A new building for the College of Cross-Cultural and Multidisciplinary Studies was completed in spring 2016.



### 3. Strengthened and globalized graduate education to support cutting-edge research

We are beginning a global education program that applies to both undergraduate and graduate-level studies with the aim of educating elite graduates going on to be active throughout the world. We send students to partner universities in the US and Europe to offer double degrees and support collaborative research.

#### Double Degree Program Partners (Graduate School)

- Institut Teknologi Sepuluh Nopember (ITS), Indonesia
- Institut Teknologi Bandung, Indonesia
- National Kaohsiung First University of Science and Technology, Taiwan
- Southern Taiwan University of Science and Technology, Taiwan
- AGH University of Science and Technology, Poland
- Paichai University, Korea
- University of Bordeaux, France
- Blaise Pascal University, France
- University of Lorraine, France
- De La Salle University, Philippines
- Mahidol University, Thailand
- Khon Kaen University, Thailand

### 4. Global campus as a driving force for internationalization in the local community

We provide opportunities for local youth to receive an early global education and assist study abroad programs.





# CENTER OF COMMUNITY PROJECT

## The Project for Planning and Promoting Local Community Oriented Education

The purpose of The Project for Planning and Promoting Local Community Oriented Education (also called "COC") is to produce individuals who study in the community to find ways to address various problems with creativity, and to contribute to progress in society from a global perspective. This involves the nurturing of talented people who are brimming with the "Spirit of Kumamoto University." Major changes in global society, such as depopulation, have brought deeply-interconnected problems to the local communities of Kumamoto Prefecture as well.

- Local community oriented education in Kumamoto University shall move forward as follows:
- Step 1: Find motivation for learning by understanding the local history, culture and current situation.
  - Step 2: Identity specific local issues through the lectures of business people and KU instructors (class lectures).
  - Step 3: Join with the community in dealing with actual issues.

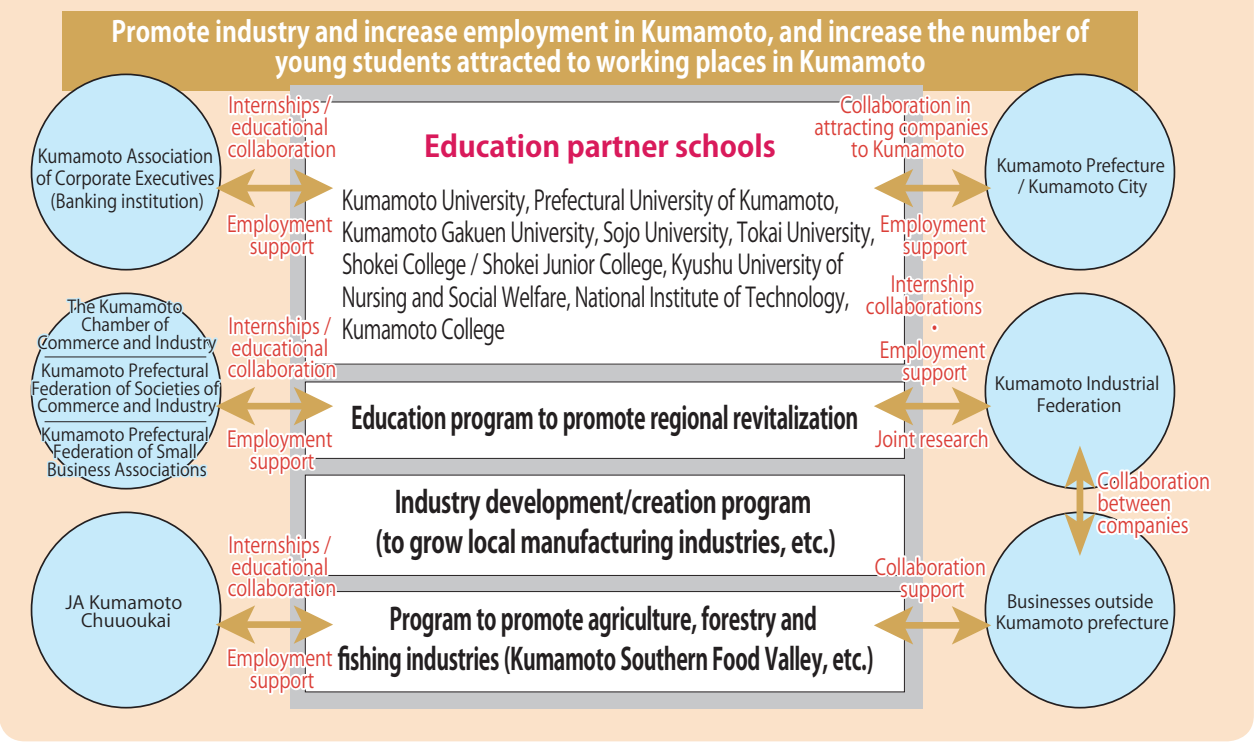
Kumamoto University will incorporate these community issues and solutions into its education through the Center of Community Project, and make every effort to reform the university organization and curricula to produce talented individuals who proactively learn from the community, think effectively while using their special knowledge, and seize the initiative.

# PROGRAM FOR PROMOTING REGIONAL REVITALIZATION BY UNIVERSITIES AS CENTERS OF COMMUNITY (COC+)

## Education Program to expand industry and employment in Kumamoto under "All Kumamoto" united efforts

In order to control the outflow of younger population from Kumamoto Prefecture and to attract the young talents, it is essential to provide them with the industry-oriented education system which nurtures the students for local industries and community. The Program for Promoting Regional Revitalization by Universities as Centers of Community (COC+) aims to promote the representative industries of Kumamoto, in the area of manufacturing, agriculture, forestry and fishing. It also aims to produce skilled individuals who can implement the measures needed for "revitalization" process and job creation.

Kumamoto University is holding a leadership role in industry development mainly in the manufacturing industry of the central and northern areas of Kumamoto Prefecture. In this program, universities, business organizations and other business-related associations in Kumamoto, as well as in Kumamoto Prefectural Government, will closely cooperate with each other for human resource development under "All Kumamoto" united efforts.



Since being selected for the “Program for Promoting the Enhancement of Research Universities” by the Ministry of Education, Culture, Sports, Science and Technology (MEXT) in 2013, we have established international collaborative research groups for life sciences, natural sciences, and humanities and social sciences to globalize and strengthen our research activities. Under the management of top professors in each research group, we invite researchers from abroad, recruit talented young researchers, regularly hold international seminars, establish overseas joint laboratories, and do much more.

### Institutions Collaborating with Kumamoto University (2009-2018)

Kumamoto University is currently working with 1,990 international institutions and we actively promote new collaborations to deliver quality research.

87 countries  
1,990 institutional collaborations



### Top 10 Institutional Collaborations by Number of Publications

| No | University / Institution                            | Number of Publications | Country     |
|----|---|------------------------|-------------|
| 1  | National Institutes of Health (NIH) - USA           | 156                    | USA         |
| 2  | Harvard University                                  | 100                    | USA         |
| 3  | NIH National Cancer Institute (NCI)                 | 90                     | USA         |
| 4  | University of California System                     | 90                     | USA         |
| 5  | Chulalongkorn University                            | 88                     | THAILAND    |
| 6  | Mahidol University                                  | 85                     | THAILAND    |
| 7  | Centre National de la Recherche Scientifique (CNRS) | 84                     | FRANCE      |
| 8  | Konyang University                                  | 69                     | SOUTH KOREA |
| 9  | VA Boston Healthcare System                         | 68                     | USA         |
| 10 | Chest Disease Research Institute - Thailand         | 68                     | THAILAND    |

Thomson Reuters InCites BA

## ■ Group for Globally-advanced Research ■

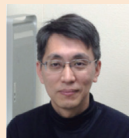
**KATSUKI Sunao,**  
Institute of Pulsed  
Power Science



### Pulsed Power Science and Application

Pulsed power is an instantaneous form of energy, whether electrical energy, chemical energy, mechanical energy, or optical energy, that can exert a tremendous amount of power. The magnitude of pulsed power can be equivalent to the total of all electrical power consumption at an instant in Kyushu, in Japan, or even in the world. Pulsed power is capable of generating unusually extreme fields, such as ultra-high-pressure fields, ultra-high electromagnetic fields, super-gravity fields and a variety of plasmas. This group furthers studies of pulsed-power produced in extremely reactive fields, and explores applications in material processing, environmental protection, biotechnology, medical treatment, food processing, and more, as well as further developing pulsed power technology. Our facilities and equipment are among the most advanced in the world, and include a comprehensive explosion experiment facility, the world's first super-gravity generation device, a comprehensive bioelectrics experiment facility, and pulsed power infrastructure equipment of great variety in terms of time range (down to sub-nanoseconds) and power range (up to 10 GW). The facilities and equipment are used not only for our own research but also for researchers from disparate fields associated with both companies and other universities, and, as such, are widely deployed in the related fields of pulsed power science and technology. We are seeking solutions to various problems that the international community is facing, and working to contribute to the realization of a safe and secure society by using pulsed power science and technology. Furthermore, we seek to encourage young researchers to be international leaders by providing them with international and interdisciplinary research environments.

**NISHINAKAMURA Ryuichi,**  
Institute of Molecular  
Embryology and Genetics



### Stem-Cell Based Tissue Regeneration Research and Education Unit

This group was established by Kumamoto University in 2013 to continuously promote the scientific activities of the Global COE Program, which was funded by the Ministry of Education, Culture, Sports, Science and Technology from 2007 to 2011. We aim to establish an education and research unit that will foster creative researchers who focus on stem-cell based developmental medicine. Stem cell research is one of the most attractive fields in biomedical science. The expectations for regenerative medicine are rising, since the derivation of human iPS cells opened the door to the regeneration of organs and tissues. To achieve this goal, however, a deeper understanding of broad areas of science, including developmental biology, is crucial. We have recruited leading researchers with various backgrounds, including those from the fields of medicine, pharmacology, and developmental biology. Our research topics include the molecular mechanisms of stem cell maintenance, lineage specification of early-stage embryos, the establishment of iPS cells from patients, the development and regeneration of the pancreas, kidneys, eyes, and neurons, as well as epigenetics and metabolisms in diseased states. We expect that these research activities will synergistically contribute to a better understanding of organogenesis and to strategies in disease treatment. We have seen seminal achievements during the past several years. They include the induction of three-dimensional kidney tissue from human iPS cells, the derivation of insulin-producing pancreatic cells from ES/iPS cells, a method of eliminating undifferentiated cells during tissue differentiation, a drug development using patient-derived iPS cells, and epigenetic control of energy expenditures and cancers. This group also seeks to encourage young scientists in research fields related to stem cell and organogenesis studies. We support these young scientists by providing in-house grants, travel expenses, and many other benefits. We hope that young researchers training in this program will work together and motivate each other to build a global next-generation network in developmental medicine. We are confident that this environment will help young postdocs and students become globally oriented independent scientists.

**TAKIGUCHI Masafumi,**  
Center for AIDS Research



### International Research Center Aiming at the Control of AIDS

More than 30 million people are living with HIV-1 worldwide, and roughly two million people die of AIDS-related illnesses each year. Among developed countries, Japan has been experiencing increased incidences of HIV infection. Thus, HIV/AIDS remains a substantial threat to the global health, and developing an HIV vaccine and therapies to cure HIV/AIDS have been the ultimate goal. A new program, "International Research Center Aiming at the control of AIDS" will establish an enhanced international research and education core based on the framework of the successfully implemented global COE "Global Education and Research Center Aiming at the Control of AIDS" Program over five years. To further expand international collaborations, research effort will be reorganized and a renewed emphasis will be placed on studies leading to the development of 1) new therapies to cure HIV/AIDS and 2) an HIV/AIDS vaccine. This program will also enhance educational opportunities for Ph.D. students and assume its role as a top-level international graduate school. The current internationally open educational system in the AIDS course provides overseas research experience. The new program will increase the number of students who will perform research at the Overseas Liaison Laboratories (OLL) and enhance the quality of education.

**KAWAMURA Yoshihito,**  
Magnesium Research Center



### International Research Core for Advanced Magnesium Alloys

Currently, one of the most significant global environmental strategies for reducing CO<sub>2</sub> emissions is the lightweighting of structural parts in various transportation systems, especially in the automotive, rail and aerospace industries. Among all metals, magnesium alloys provide the greatest weight-saving advantages in structural applications. A new generation of innovative magnesium alloys - KUMADAI Magnesium Alloys- featuring an admirable balance of mechanical advantages, corrosion resistance and non-flammability has been developed at the Magnesium Research Center (MRC) of Kumamoto University. The key goals of the MRC are to 1) advance the research and development of KUMADAI Magnesium Alloys to increase applications, 2) help accelerate transition, and 3) establish a global research network and enhance research collaboration with international universities, research institutes and industries, for advanced magnesium alloy science and technology.

## KUMAMOTO UNIVERSITY EXCELLENT RESEARCH PROJECTS

みらい研究推進事業

The Kumamoto University Excellent Research Project aims to develop world-leading research areas that represent the potential of Kumamoto University. It focuses on nurturing researchers who are already highly successful in their respective fields so that they may pass their knowledge on to future generations. Only the most highly evaluated projects are approved for the three-year funding support.

### ■ EISEI-BUNKO Research Center ■



COE for Study on Japanese Early Modern History by comprehensive analysis of material of the Kumamoto Domain

**INABA Tsuguharu**  
EISEI-BUNKO Research Center

### ■ Natural Sciences ■



Development of functional materials using 2D-materials

**IDA Shintaro**  
Faculty of Advanced Science and Technology



The Molecular Agriculture -From Kumamoto to the world-

**SAWA Shinichiro**  
Faculty of Advanced Science and Technology



Materials Interface Architecture towards Innovative Structural and Functional Materials

**TSUREKAWA Sadahiro**  
Faculty of Advanced Science and Technology

### ■ Life Sciences ■



Next-Generation Drug Discovery Research Using Unique Libraries

**SUGIMOTO Yukihiko**  
Faculty of Life Sciences



Research core for aging and healthy life expectancy

**TOMIZAWA Kazuhito**  
Faculty of Life Sciences



Elucidation of the common mechanism between cancer and mental disorder through LINE-1 analyses

**BABA Hideo**  
Faculty of Life Sciences



Mechanisms of leukemogenesis by chronic infection and inflammatory stress: adult T-cell leukemia as a model

**MATSUOKA Masao**  
Faculty of Life Sciences

## KUMAMOTO UNIVERSITY CHALLENGING RESEARCH PROJECTS

めばえ研究推進事業

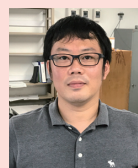
Bold research projects with the potential for revolutionizing established concepts and changing the direction of academia fall within the framework of Kumamoto University Challenging Research Projects. These programs aim to revitalize research that may represent the future of Kumamoto University and are funded for one year.

### ■ Priority Organization for Innovation and Excellence ■



Development of tumor therapy by lactic acid bacteria

**ITO Naofumi**  
Priority Organization for Innovation and Excellence / Faculty of Life Sciences



Physical property of liquid Fe alloys under Earth's core pressures

**NAKAJIMA Yoichi**  
Priority Organization for Innovation and Excellence / Faculty of Science



Understanding exosome-mediated malignant progression and the application for diagnosis in lung cancer

**YAMAGUCHI Tomoya**  
Priority Organization for Innovation and Excellence / Faculty of Life Sciences

## ■ Natural Sciences ■



Spatiotemporal control and imaging of the cell through photo dimerization of anthracene-modified DNAs

**IHARA Toshihiro**  
Faculty of Advanced Science and Technology



Analytical system for the quantification of unknown compounds

**OHIRA Shinichi**  
Faculty of Advanced Science and Technology



Creating a bio-inspired surface on artificial materials  
-A strong impact on the market-

**NAKANISHI Yoshitaka**  
Faculty of Advanced Science and Technology



Application to novel cancer therapy by macrophage activation using biomaterial particles

**NAKASHIMA Yuta**  
Faculty of Advanced Science and Technology



Developments of ammonia combustive decomposition catalysts composed of novel compounds

**HINOKUMA Satoshi**  
Faculty of Advanced Science and Technology

## ■ Life Sciences ■



Development of a novel biomimetic DDS for improvement of healthy life expectancy and its application to sarcopenia treatment

**MARUYAMA Toru**  
School of Pharmacy



Development of the insulin-delivery system for oral administration

**ITO Shingo**  
Faculty of Life Sciences



Identification of "critical point" of schizophrenia onset induced by the dysfunction of cortical GABAergic neurons

**ESUMI Shigeyuki**  
Faculty of Life Sciences



Development of antimetastatic drugs targeting cancer-associated sugar chains

**OHTSUBO Kazuaki**  
Faculty of Life Sciences



Ligand discovery for ex vivo expansion of human hematopoietic stem progenitor cell

**MASUDA Takeshi**  
Faculty of Life Sciences



Targeting the Hippo intracellular signaling pathway for cancer immunotherapy

**MOROISHI Toshiro**  
Faculty of Life Sciences



Research on innovative MR-imaging technique for quantitative image diagnosis of neurodegenerative disorders

**YONEDA Tetsuya**  
Faculty of Life Sciences

## ■ Institute of Resource Development and Analysis ■



Therapeutic approach to cancer and life-style disease based on the study with Down Syndrome aneuploidy model

**MINAMI Takashi**  
Institute of Resource Development and Analysis

# INTERNATIONAL EXCHANGE AGREEMENTS

Kumamoto University has formed cooperative relationships with foreign academic institutions by concluding academic exchange agreements. As of September 1, 2018 we have 246 partner institutions in 51 countries and regions.

## chart 1 LISTS OF UNIVERSITY-LEVEL EXCHANGE AGREEMENTS

116 partner institutions (37 countries and regions)

(As of September 1, 2018)

| Country      | University / Institute   | Since | Country     | University / Institute   | Since |
|--------------|--|-------|-------------|--|-------|
| Australia    | The University of Newcastle  | 1986  | Korea       | University of Seoul  | 2011  |
| Australia    | Queensland University of Technology  | 2014  | Korea       | Ajou University  | 2011  |
| Australia    | University of Technology Sydney  | 2017  | Korea       | Chungbuk National University   | 2012  |
| Bangladesh   | University of Dhaka  | 2000  | Korea       | Pusan National University  | 2012  |
| Burkina Faso | University Ouaga I Professor Joseph KI-ZERBO   | 2016  | Korea       | Chonbuk National University  | 2012  |
| Cambodia     | Royal University of Phnom Penh   | 2016  | Korea       | Hannam University  | 2016  |
| Canada       | University of Alberta  | 2001  | Laos        | National University of Laos  | 2011  |
| Canada       | McGill University  | 2016  | Latvia      | Riga Technical University  | 2018  |
| China        | Guangxi Normal University  | 2005  | Malaysia    | University Sains Malaysia  | 2012  |
| China        | Tongji University  | 2005  | Mexico      | Autonomous University of Nuevo León  | 2017  |
| China        | Dalian University of Technology  | 2006  | Myanmar     | Yangon Technological University  | 2015  |
| China        | Nanchang University  | 2006  | Myanmar     | Patheingyi University  | 2016  |
| China        | Shanghai Normal University   | 2008  | Nepal       | Pokhara University   | 2010  |
| China        | Harbin Institute of Technology   | 2009  | New Zealand | Massey University  | 1996  |
| China        | Jilin University   | 2009  | Philippines | University of the Philippines, Diliman   | 2002  |
| China        | Nankai University  | 2009  | Philippines | University of the Philippines Los Baños  | 2015  |
| China        | Shandong University  | 2009  | Philippines | Ateneo de Manila University  | 2016  |
| China        | Sichuan University   | 2009  | Poland      | University of Warsaw   | 2009  |
| China        | Northeastern University  | 2010  | Poland      | Lublin University of Technology  | 2015  |
| China        | Beijing University of Technology   | 2011  | Romania     | University of Bucharest  | 2015  |
| China        | Shenzhen University  | 2011  | Rwanda      | University of Rwanda   | 2014  |
| China        | The University of Macau  | 2011  | Slovenia    | University of Maribor  | 2016  |
| China        | East China University of Political Science and Law   | 2011  | Spain       | University of Valencia   | 2014  |
| China        | Jilin Institute of Chemical Technology   | 2013  | Spain       | University of Santiago de Compostela   | 2018  |
| China        | Northeast Normal University  | 2014  | Spain       | Valladolid University  | 2018  |
| China        | Chongqing University   | 2014  | Taiwan      | Southern Taiwan University of Science and Technology                             | 2008  |
| China        | Nanjing Normal University  | 2015  | Taiwan      | National Tsing Hua University  | 2015  |
| China        | Guilin University of Technology  | 2015  | Taiwan      | National University of Kaohsiung   | 2016  |
| China        | Anhui University   | 2015  | Taiwan      | Chang Jung Christian University  | 2016  |
| China        | Wuhan University of Technology   | 2016  | Tanzania    | Muhimbili University of Health and Allied Sciences                               | 2015  |
| China        | Guangxi Medical University   | 2018  | Thailand    | Kasetsart University   | 1994  |
| D.R Congo    | University of Mbuji-Mayi   | 2015  | Thailand    | Khon Kaen University   | 2004  |
| Djibouti     | Djibouti University  | 2013  | Thailand    | Mahidol University   | 2013  |
| Egypt        | Suez Canal University  | 2006  | Thailand    | Burapha University   | 2017  |
| Egypt        | Fayoum University  | 2008  | Thailand    | Chiang Mai University  | 2018  |
| France       | Bordeaux Institute of Technology   | 2006  | Turkey      | Ege University   | 2000  |
| France       | University of Bordeaux   | 2007  | Turkey      | Canakkale Onsekiz Mart University  | 2015  |
| France       | Aix-Marseille University   | 2016  | UK          | Durham University  | 1993  |
| France       | University Bordeaux Montaigne  | 2017  | UK          | University of Birmingham   | 1993  |
| Germany      | Saarland University  | 2001  | UK          | University of Leeds  | 2006  |
| Germany      | Heinrich Heine University Düsseldorf   | 2017  | USA         | The University of Montana  | 1987  |
| Germany      | Hochschule für Technik und Wirtschaft Berlin   | 2018  | USA         | Montana State University   | 1987  |
| Hungary      | Pázmány Péter Catholic University  | 2015  | USA         | Virginia Commonwealth University   | 1989  |
| India        | Indian Institute of Technology Bombay  | 2018  | USA         | University of North Carolina at Charlotte  | 1990  |
| Indonesia    | The Consortium of Institut Teknologi Sepuluh Nopember, Indonesia (Institut Teknologi Sepuluh Nopember, Universitas Sam Ratulangi, Universitas Mataram, Universitas Cenderawasih, Universitas Nusa Cendana) | 2008  | USA         | Texas Tech University  | 1994  |
| Indonesia    | Institut Teknologi Bandung   | 2011  | USA         | The University of Texas at San Antonio   | 2010  |
| Indonesia    | Gadjah Mada University   | 2013  | USA         | University of California, Los Angeles  | 2014  |
| Indonesia    | Airlangga University   | 2013  | USA         | University of Massachusetts Boston   | 2016  |
| Indonesia    | Udayana University   | 2015  | USA         | The University of Georgia  | 2017  |
| Indonesia    | University of Indonesia  | 2016  | USA         | Wright State University  | 2017  |
| Indonesia    | University of Brawijaya  | 2016  | USA         | University of Alaska Anchorage   | 2018  |
| Ireland      | Waterford Institute of Technology  | 2018  | Vietnam     | VNU University of science  | 2007  |
| Italy        | University of Padova   | 2018  | Vietnam     | Ho Chi Minh City University of Technology  | 2010  |
| Korea        | Pai Chai University  | 1999  | Vietnam     | Hue University   | 2010  |
| Korea        | Dong-A University  | 2005  | Vietnam     | National University of Civil Engineering   | 2010  |
| Korea        | Korea Advanced Institute of Science and Technology   | 2006  | Vietnam     | University of Social Sciences and Humanities, Vietnam National University, Hanoi | 2016  |
| Korea        | Chosun University  | 2009  | Vietnam     | University of Languages and International Studies, VNU                           | 2016  |
| Korea        | Pukyong National University  | 2011  | Vietnam     | Foreign Trade University   | 2016  |

# INTERNATIONAL EXCHANGE AGREEMENTS

chart **2**

## LISTS OF DEPARTMENT-LEVEL EXCHANGE AGREEMENTS

130 partner institutions (37 countries and regions)

(As of September 1, 2018)

| Country    | University / Institute   | Counterpart   | Since |
|------------|--|---|-------|
| Australia  | Division of Materials Engineering, The University of Queensland  | Magnesium Research Center   | 2013  |
| Australia  | Australian Phenomics Facility, The Australian National University  | Institute of Resource Development and Analysis  | 2014  |
| Australia  | Faculty of Engineering, Architecture and Information Technology (EAIT), The University of Queensland   | Institute of Pulsed Power Science   | 2018  |
| Austria    | Faculty of Philological and Cultural Studies, University of Vienna   | Center for Policy Studies   | 2016  |
| Bangladesh | Faculty of Engineering and Technology, Faculty of Science, Noakhali Science And Technology University  | Faculty of Advanced Science and Technology, Graduate School of Science and Technology   | 2018  |
| Brazil     | University of Campinas   | Faculty of Engineering, Graduate School of Science and Technology, Faculty of Advanced Science and Technology                                       | 2009  |
| Brazil     | Technological Institute of Aeronautics   | Faculty of Engineering, Graduate School of Science and Technology, Faculty of Advanced Science and Technology                                       | 2017  |
| Cambodia   | University of Health Sciences, Cambodia  | School of Pharmacy, Graduate School of Pharmaceutical Sciences  | 2016  |
| Canada     | Queen's University at Kingston   | Faculty of Engineering, Graduate School of Science and Technology, Faculty of Advanced Science and Technology                                       | 2014  |
| Canada     | University of Calgary, Schulich School of Engineering  | Graduate School of Science and Technology, Faculty of Advanced Science and Technology   | 2016  |
| China      | Chinese Academy of Medical Sciences  | School of Medicine  | 1983  |
| China      | Harbin Medical University  | School of Medicine, Faculty of Medical and Pharmaceutical Sciences, Graduate School of Medical Sciences, Graduate School of Pharmaceutical Sciences | 1999  |
| China      | Shanghai Laboratory Animal Center, Chinese Academy of Science  | Institute of Resource Development and Analysis  | 2004  |
| China      | College of Civil Engineering & Architecture, School of Chemistry & Chemical Engineering, Guangxi University  | Faculty of Engineering, Graduate School of Science and Technology, Faculty of Advanced Science and Technology                                       | 2007  |
| China      | College of Engineering, Peking University  | Faculty of Engineering, Graduate School of Science and Technology, Faculty of Advanced Science and Technology                                       | 2008  |
| China      | Wenzhou Medical University   | Faculty of Medical and Pharmaceutical Sciences  | 2008  |
| China      | School of International Relations and Public Affairs, Fudan University   | Graduate School of Social and Cultural Sciences   | 2009  |
| China      | School of Foreign Languages, Hangzhou Normal University  | Faculty of Letters, Graduate School of Social and Cultural Sciences   | 2010  |
| China      | Civil Engineering College, Municipal and Environmental Engineering College, Transportation Engineering College, Graduate School, Shenyang Jianzhu University | Faculty of Engineering, Graduate School of Science and Technology, Faculty of Advanced Science and Technology                                       | 2010  |
| China      | Institute for Biomedical Research / Medical College, Xiamen University   | School of Medicine, Faculty of Life Sciences, Graduate School of Medical Sciences   | 2010  |
| China      | School of Medicine, Zhejiang University  | School of Medicine, Faculty of Life Sciences, Graduate School of Medical Sciences   | 2010  |
| China      | National Institutes for Food and Drug Control  | Institute of Resource Development and Analysis  | 2012  |
| China      | Center for Public Policy and Governance, Shanghai Jiao Tong University   | Center for Policy Studies   | 2013  |
| China      | School of Tourism and City Administration, Zhejiang Gongshang University   | Faculty of Engineering, Graduate School of Science and Technology, Faculty of Advanced Science and Technology                                       | 2015  |
| China      | Key Laboratory of Chemistry of Northwestern Plant Resources, Chinese Academy of Sciences (CAS), Lanzhou Institute of Chemical Physics (LICP)                 | Graduate School of Science and Technology, Faculty of Advanced Science and Technology   | 2018  |
| China      | School of Medicine, Department of Laboratory Animal Sciences, Shanghai Jiao Tong University  | Institute of Resource Development and Analysis  | 2018  |
| Czech      | Technical University of Ostrava and Institute of Geonics of the Academy of Sciences of the Czech Republic  | Faculty of Engineering, Graduate School of Science and Technology, Faculty of Advanced Science and Technology                                       | 2009  |
| Czech      | University of Chemistry and Technology, Prague   | Graduate School of Science and Technology   | 2010  |
| Czech      | University of Pardubice  | Faculty of Science, Faculty of Engineering, Graduate School of Science and Technology, Faculty of Advanced Science and Technology                   | 2015  |
| Czech      | Institute of Physics, Academy of Sciences of Czech Republic  | Faculty of Engineering, Graduate School of Science and Technology, Faculty of Advanced Science and Technology                                       | 2015  |
| Czech      | Faculty of Mathematics and Physics, Charles University   | Magnesium Research Center   | 2018  |
| Denmark    | Faculty of Humanities, University of Copenhagen  | Faculty of Humanities and Social Sciences, Faculty of Letters, College of Cross-Cultural and Multidisciplinary Studies                              | 2018  |
| France     | University of Clermont Auvergne  | Faculty of Science, Faculty of Engineering, Graduate School of Science and Technology, Faculty of Advanced Science and Technology                   | 2010  |
| France     | University Joseph Fourier - Grenoble I   | Faculty of Engineering, Graduate School of Science and Technology, Faculty of Advanced Science and Technology                                       | 2011  |
| France     | École nationale supérieure des mines de Saint-Étienne  | Faculty of Science, Faculty of Engineering, Graduate School of Science and Technology, Faculty of Advanced Science and Technology                   | 2012  |
| France     | CRM2 Laboratory, University of Lorraine  | Faculty of Science, Graduate School of Science and Technology, Faculty of Advanced Science and Technology   | 2014  |
| France     | Institut Pasteur   | Institute of Resource Development and Analysis  | 2015  |
| France     | Faculty of Sciences and Engineering, Toulouse III Paul Sabatier  | Faculty of Engineering, Graduate School of Science and Technology, Faculty of Advanced Science and Technology, Faculty of Science                   | 2018  |
| Germany    | Faculty of Arts, University of Bonn  | Faculty of Letters  | 1997  |
| Germany    | Leibniz Institute for Applied Geophysics   | Graduate School of Science and Technology, Faculty of Advanced Science and Technology   | 2013  |
| Germany    | Department of Civil and Environmental Engineering, Ruhr-University Bochum  | Faculty of Engineering, Graduate School of Science and Technology, Faculty of Advanced Science and Technology                                       | 2014  |
| Germany    | Faculty of Georesources and Materials Engineering, Institute of Physical Metallurgy and Metal Physics, RWTH Aachen University                                | Faculty of Engineering, Graduate School of Science and Technology, Faculty of Advanced Science and Technology                                       | 2015  |
| Germany    | Institute of Physics of Faculty of Mathematics and Natural Sciences, University of Rostock   | Faculty of Science, Graduate School of Science and Technology, Faculty of Advanced Science and Technology   | 2017  |
| Germany    | Faculty for Chemistry and Pharmacy, Würzburg University  | Faculty of Engineering, Graduate School of Science and Technology, Faculty of Advanced Science and Technology                                       | 2018  |
| India      | Faculty of Engineering & Technology, Annamalai University  | Faculty of Engineering, Graduate School of Science and Technology, Faculty of Advanced Science and Technology                                       | 2006  |
| India      | Manipal University   | Faculty of Engineering, Graduate School of Science and Technology, Faculty of Advanced Science and Technology                                       | 2009  |
| India      | National Institute of Technology Karnataka   | Faculty of Engineering, Graduate School of Science and Technology, Faculty of Advanced Science and Technology                                       | 2009  |
| India      | Alva's Institute of Engineering & Technology   | Faculty of Engineering, Graduate School of Science and Technology, Faculty of Advanced Science and Technology                                       | 2017  |
| India      | Indian Institute of Science Department of Aerospace Engineering  | Institute of Pulsed Power Science   | 2017  |
| Indonesia  | Electrical Engineering School, Graduate School, Telkom University  | Faculty of Engineering, Graduate School of Science and Technology, Faculty of Advanced Science and Technology                                       | 2014  |
| Indonesia  | Faculty of Engineering, Hasanuddin University  | Faculty of Engineering, Graduate School of Science and Technology, Faculty of Advanced Science and Technology                                       | 2015  |
| Indonesia  | Faculty of Industrial Technology, Islamic University of Indonesia  | Faculty of Engineering, Graduate School of Science and Technology, Faculty of Advanced Science and Technology                                       | 2017  |
| Kenya      | School of Humanities and Social Sciences, Pwani University   | Faculty of Letters, Graduate School of Social and Cultural Sciences   | 2015  |
| Korea      | College of Education, Kangnam University   | Faculty of Education  | 2002  |
| Korea      | Advanced Process and Materials R&D Group, Korea Institute of Industrial Technology   | Faculty of Engineering, Graduate School of Science and Technology, Faculty of Advanced Science and Technology                                       | 2003  |
| Korea      | Nano Materials & Products Regional Innovation Center, Hoseo University   | Shock Waves and Condensed Matter Research Center  | 2004  |
| Korea      | College of Engineering, Hoseo University   | Faculty of Engineering, Graduate School of Science and Technology, Faculty of Advanced Science and Technology                                       | 2007  |
| Korea      | College of Health Science, Korea University / Department of Bio-convergence engineering, Korea University Graduate School                                    | School of Medicine, Faculty of Life Sciences, Graduate School of Health Sciences  | 2007  |
| Korea      | Law School, Yeungnam University  | School of Law   | 2010  |
| Korea      | College of Engineering, Graduate School of Engineering, Regional Innovation Center for Environmental Technology of Thermal Plasma, Inha University           | Faculty of Engineering, Graduate School of Science and Technology, Faculty of Advanced Science and Technology                                       | 2011  |
| Korea      | College of Engineering, Korea Maritime and Ocean University  | Faculty of Engineering, Graduate School of Science and Technology, Faculty of Advanced Science and Technology                                       | 2011  |
| Korea      | Graduate School of Kosin University and College of Natural Science, Kosin University   | Faculty of Science, Faculty of Engineering, Graduate School of Science and Technology, Faculty of Advanced Science and Technology                   | 2011  |
| Korea      | College of Engineering, Yonsei University  | Faculty of Engineering, Graduate School of Science and Technology, Faculty of Advanced Science and Technology                                       | 2013  |
| Korea      | Laboratory Animal Resource Center, Korea Research Institute of Bioscience and Biotechnology  | Institute of Resource Development and Analysis  | 2013  |
| Korea      | Light Metal Division, Korea Institute of Materials Science   | Magnesium Research Center   | 2014  |

| Country     | University / Institute  | Counterpart  | Since |
|-------------|---|--|-------|
| Korea       | College of Natural Sciences, Teachers' College, Kyungpook National University   | Faculty of Science, Graduate School of Science and Technology, Faculty of Advanced Science and Technology  | 2014  |
| Korea       | Magnesium Technology Innovation Center, Seoul National University   | Magnesium Research Center  | 2015  |
| Kyrgyz      | Institute of Chemistry and Chemical Technology of National Academy of Science of the Kyrgyz Republic  | Institute of Pulsed Power Science  | 2014  |
| Kyrgyz      | Faculty of Engineering, Faculty of Science, Institute of Natural and Applied Sciences, Kyrgyz-Turkish Manas University                        | Faculty of Science, Faculty of Engineering, Graduate School of Science and Technology, Faculty of Advanced Science and Technology  | 2016  |
| Laos        | Faculty of Nursing Sciences, University of Health Sciences  | Faculty of Life Science  | 2014  |
| Laos        | Faculty of Engineering, Souphanouvong University  | Faculty of Engineering, Graduate School of Science and Technology, Faculty of Advanced Science and Technology  | 2017  |
| Malaysia    | Universiti Teknologi PETRONAS   | Faculty of Science, Faculty of Engineering, Graduate School of Science and Technology, Faculty of Advanced Science and Technology  | 2012  |
| Malaysia    | Universiti Malaysia Sarawak   | International Research Center for Medical Sciences   | 2017  |
| Mongol      | School of Mathematics and Computer Science, National University of Mongolia   | Faculty of Science, Graduate School of Science and Technology, Faculty of Advanced Science and Technology  | 2013  |
| Mongol      | School of Economics and Business, Mongolian University of Life Sciences   | Faculty of Science, Graduate School of Science and Technology, Faculty of Advanced Science and Technology  | 2013  |
| Mongol      | Mongolian University of Science and Technology  | Faculty of Engineering, Graduate School of Science and Technology, Faculty of Advanced Science and Technology  | 2016  |
| Myanmar     | Mandalay Technological University   | Faculty of Engineering, Graduate School of Science and Technology, Faculty of Advanced Science and Technology  | 2015  |
| Netherlands | Faculty of Engineering Technology, University of Twente   | Faculty of Engineering, Graduate School of Science and Technology, Faculty of Advanced Science and Technology  | 2015  |
| Philippines | College of Engineering, De La Salle University-Manila   | Faculty of Engineering, Graduate School of Science and Technology, Faculty of Advanced Science and Technology  | 2011  |
| Poland      | Faculty of Materials Science and Ceramics, AGH University of Science and Technology   | Graduate School of Science and Technology, Faculty of Advanced Science and Technology  | 2010  |
| Russia      | Aircraft and Mechanical Engineering Faculties, Novosibirsk State Technical University   | Shock Wave and Condensed Matter Research Center  | 2008  |
| Russia      | Institute of Advanced Technologies, Togliatti State University  | Magnesium Research Center  | 2015  |
| Singapore   | Cancer Science Institute of Singapore (CSI), National University of Singapore   | International Research Center for Medical Sciences   | 2017  |
| Spain       | The Spanish National Research Council   | Institute of Resource Development and Analysis   | 2018  |
| Sri Lanka   | Gampaha Wickramarachchi Ayurveda Institute, University of Kelaniya  | Faculty of Life Science, Graduate School of Pharmaceutical Sciences, School of Pharmacy  | 2014  |
| Sudan       | Medicinal and Aromatic Plants and Traditional Medicine Research Institute   | Faculty of Life Science, Graduate School of Pharmaceutical Sciences, School of Pharmacy  | 2012  |
| Sudan       | Faculty of Pharmacy, University of Khartoum   | School of Pharmacy, Graduate School of Pharmaceutical Sciences   | 2016  |
| Switzerland | Institute of Asian and Oriental Studies, Department of Japanology, University of Zurich   | Faculty of Letters, Graduate School of Social and Cultural Sciences  | 2016  |
| Switzerland | School of Biology, Faculty of Biology and Medicine, University of Lausanne  | Faculty of Advanced Science and Technology, Graduate School of Science and Technology, Faculty of Science, International Research Organization for Advanced Science and Technology | 2018  |
| Taiwan      | Nan Jeon University of Science and Technology   | Faculty of Education   | 2005  |
| Taiwan      | College of Engineering, College of Electrical Engineering and Computer Science, National Kaohsiung First University of Science and Technology | Faculty of Engineering, Graduate School of Science and Technology, Faculty of Advanced Science and Technology  | 2009  |
| Taiwan      | National Laboratory Animal Center   | Institute of Resource Development and Analysis   | 2010  |
| Taiwan      | College of Foreign Languages and Literatures, Tamkang University  | Faculty of Letters, Graduate School of Social and Cultural Sciences  | 2013  |
| Taiwan      | National Cheng Kung University Hospital   | University Hospital, Faculty of Life Science   | 2014  |
| Taiwan      | College of Mechanical and Electrical Engineering, National Taipei University of Technology  | Faculty of Engineering, Graduate School of Science and Technology, Faculty of Advanced Science and Technology  | 2014  |
| Taiwan      | Mariculture Research Center, Fisheries Research Institute, Council of Agriculture   | Center for Marine Environment Studies  | 2014  |
| Taiwan      | Tatung University, College of Electrical Engineering and Computer Science   | Faculty of Engineering, Graduate School of Science and Technology, Faculty of Advanced Science and Technology  | 2017  |
| Taiwan      | School of Law, Soochow University   | Faculty of Law, Graduate School of Social and Cultural Sciences, School of Law   | 2017  |
| Taiwan      | School of Law, Fu Jen Catholic University   | Faculty of Humanities and Social Sciences, Faculty of Law, School of Law, Graduate School of Social and Cultural Sciences  | 2018  |
| Taiwan      | Department of Materials Science and Engineering, National Taiwan University   | Magnesium Research Center  | 2018  |
| Taiwan      | College of Health Sciences and Technology, National Central University  | Faculty of Life Sciences   | 2018  |
| Tanzania    | St. Francis University College of Health and Allied Sciences (SFUCHAS)  | Center for AIDS Research, International Research Center for Medical Sciences   | 2017  |
| Thailand    | Faculty of Engineering, Chulalongkorn University  | Faculty of Engineering, Graduate School of Science and Technology, Faculty of Advanced Science and Technology  | 2011  |
| Thailand    | Faculty of Engineering, King Mongkut's Institute of Technology Ladkrabang   | Faculty of Engineering, Graduate School of Science and Technology, Faculty of Advanced Science and Technology  | 2014  |
| Thailand    | Faculty of Allied Health Sciences, Naresuan University  | Faculty of Life Sciences, Graduate School of Health Sciences   | 2016  |
| Thailand    | King Mongkut's University of Technology Thonburi, The Joint Graduate School of Energy and Environment   | Graduate School of Science and Technology, Faculty of Advanced Science and Technology  | 2016  |
| Thailand    | School of Medicine, Mae Fah Luang University  | Faculty of Life Sciences, Graduate School of Medical Sciences, AIDS Research Center  | 2016  |
| Thailand    | Faculty of Science and Technology, Thammasat University   | Faculty of Engineering, Graduate School of Science and Technology, Faculty of Advanced Science and Technology  | 2018  |
| Turkey      | Engineering Faculty, Cankiri Karatekin University   | Faculty of Engineering, Graduate School of Science and Technology, Faculty of Advanced Science and Technology  | 2015  |
| Turkey      | Faculty of Engineering, Graduate School of Natural and Applied Science, Gazi University   | Faculty of Engineering, Graduate School of Science and Technology, Faculty of Advanced Science and Technology  | 2015  |
| Turkey      | Kilis 7 Aralık University   | School of Pharmacy, Graduate School of Pharmaceutical Sciences   | 2017  |
| Turkey      | The Faculty of Agriculture, Ordu University   | School of Pharmacy, Graduate School of Pharmaceutical Sciences   | 2017  |
| Turkey      | Anadolu University  | Faculty of Life Sciences, School of Pharmacy, Graduate School of Pharmaceutical Sciences   | 2017  |
| UK          | Mary Lyon Centre, MRC Harwell   | Institute of Resource Development and Analysis   | 2011  |
| UK          | The School of Engineering, University of Glasgow  | Institute of Pulsed Power Science  | 2014  |
| Uruguay     | Institut Pasteur de Montevideo  | Institute of Resource Development and Analysis   | 2017  |
| USA         | College of Engineering, Georgia Institute of Technology   | Faculty of Engineering, Graduate School of Science and Technology, Faculty of Advanced Science and Technology  | 1996  |
| USA         | The Jackson Laboratory  | Institute of Resource Development and Analysis   | 2004  |
| USA         | School of Nursing, University of California, San Francisco  | Faculty of Sciences, Graduate School of Science of Health and Technology, Faculty of Advanced Science and Technology   | 2011  |
| USA         | School of Nursing and Health Professions, University of San Francisco   | Faculty of Sciences, Graduate School of Science of Health and Technology, Faculty of Advanced Science and Technology   | 2012  |
| USA         | Mouse Biology Program, University of California, Davis  | Institute of Resource Development and Analysis   | 2013  |
| USA         | Center for Inflammation, Immunity & Infection, Georgia State University   | Faculty of Life Science, Graduate School of Pharmaceutical Sciences, School of Pharmacy  | 2013  |
| USA         | Geophysical Laboratory, Carnegie Institution of Washington  | Institute of Pulsed Power Science, Graduate School of Science and Technology, Faculty of Advanced Science and Technology   | 2015  |
| USA         | Michigan State University   | Faculty of Advanced Science and Technology, International Research Organization for Advanced Science and Technology  | 2018  |
| Vietnam     | Vietnam Institute of Geosciences and Mineral Resources, Ministry of Natural Resources and Environment   | Faculty of Science, Graduate School of Science and Technology, Faculty of Advanced Science and Technology  | 2007  |
| Vietnam     | Danang University of Technology   | Faculty of Engineering, Graduate School of Science and Technology, Faculty of Advanced Science and Technology  | 2008  |
| Vietnam     | Ho Chi Minh City University of Architecture   | Faculty of Engineering, Graduate School of Science and Technology, Faculty of Advanced Science and Technology  | 2008  |
| Vietnam     | Vietnam National Museum of Nature, Vietnam Academy of Science and Technology  | Graduate School of Science and Technology, Faculty of Advanced Science and Technology  | 2012  |
| Vietnam     | Hanoi University of Mining and Geology  | Faculty of Engineering, Graduate School of Science and Technology, Faculty of Advanced Science and Technology  | 2015  |
| Vietnam     | Institute of Marine Geology and Geophysics, Vietnam Academy of Science and Technology   | Graduate School of Science and Technology, Faculty of Advanced Science and Technology  | 2017  |

The department names above are written as they existed when the agreements were concluded / renewed.



# INTERNATIONAL EXCHANGE AGREEMENTS

chart 3 CHANGES IN NUMBERS OF PARTNER INSTITUTIONS (As of September 1, 2018)

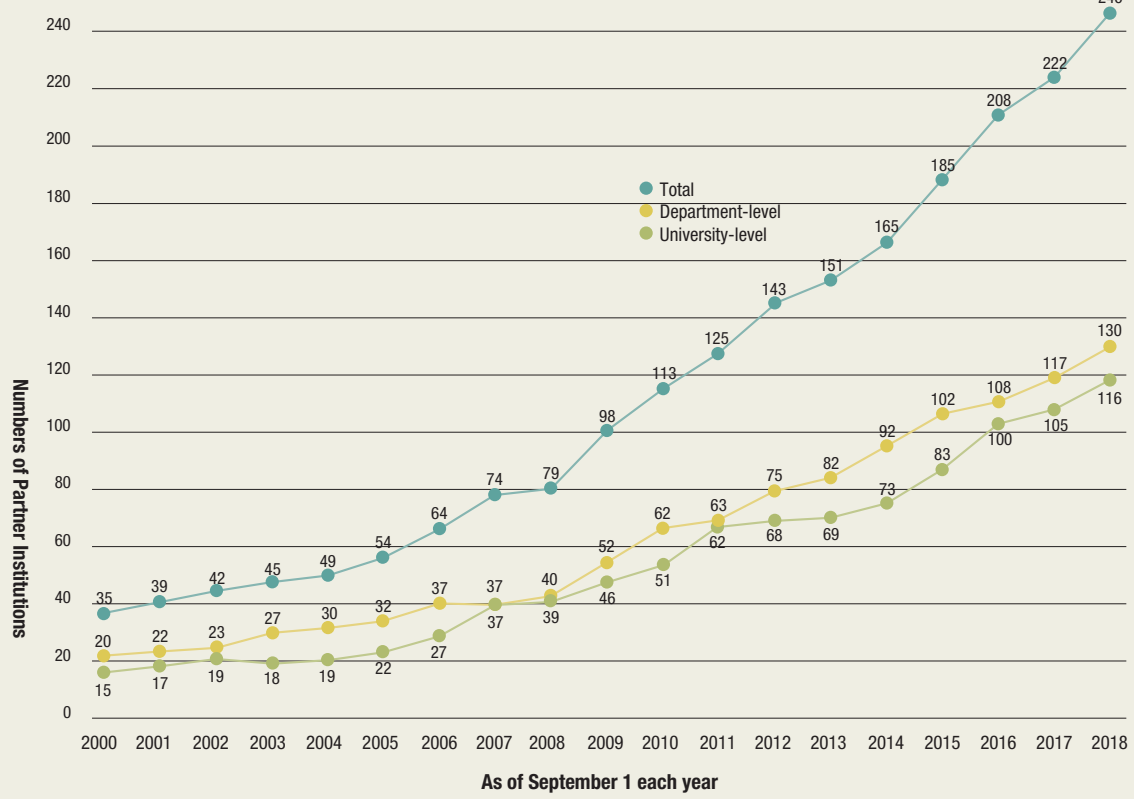
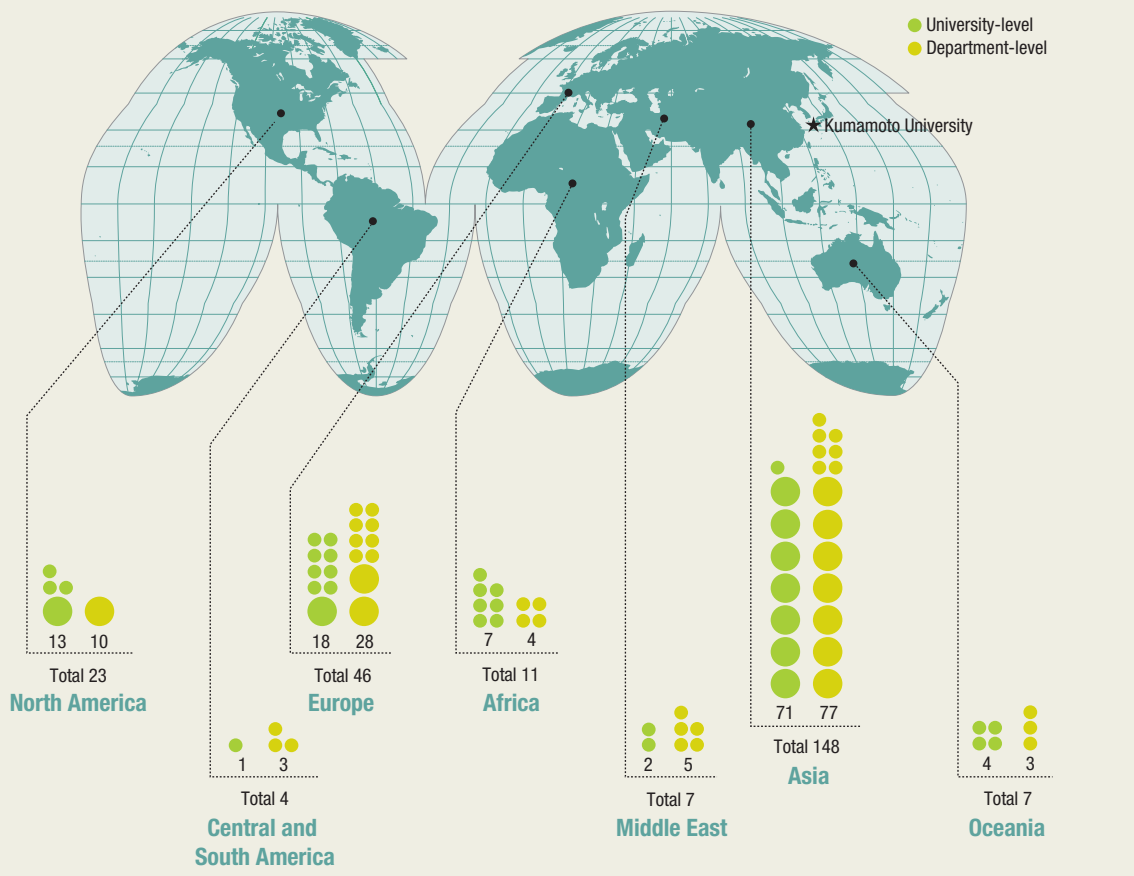


chart 4 WORLD MAP WITH THE NUMBERS OF PARTNER INSTITUTIONS



# RESEARCHERS AND SCHOLARS EXCHANGES (April 2017- March 2018)

| Region               | Country     | Funding Source               |   | University Staff Sent Abroad                  |                      |                                |                |           |                              | Visiting Foreign Researchers                      |   |                      |                                |                |           |    |
|----------------------|-------------|------------------------------|---|---|----------------------|--------------------------------|----------------|-----------|------------------------------|---|---|----------------------|--------------------------------|----------------|-----------|----|
|                      |             | Ministry of Education (MEXT) | Japan Society for the Promotion of Science (JSPS) | Japan International Cooperation Agency (JICA) | Other Domestic Funds | Foreign Governments/Institutes | Private-Funded | Sub-total | Ministry of Education (MEXT) | Japan Society for the Promotion of Science (JSPS) | Japan International Cooperation Agency (JICA) | Other Domestic Funds | Foreign Governments/Institutes | Private-Funded | Sub-total |    |
| Asia                 | Bangladesh  | 1                            | 2   |   |                      |                                | 3              |           |                              |   |   | 13                   |                                |                | 13        |    |
|                      | Cambodia    |                              |   |   | 4                    | 1                              | 5              |           |                              |   |   |                      |                                |                | 0         |    |
|                      | China       | 3                            | 4   | 1   | 87                   | 10                             | 1              | 106       | 5                            | 3   |   | 25                   | 9                              | 1              | 43        |    |
|                      | India       | 1                            |   |   | 13                   |                                |                | 14        |                              |   |   | 6                    |                                |                | 6         |    |
|                      | Indonesia   | 3                            |   |   | 11                   | 3                              | 2              | 19        | 4                            | 2   |   | 6                    | 1                              | 1              | 14        |    |
|                      | Korea       | 4                            | 1   | 1   | 66                   | 6                              | 4              | 82        | 7                            | 3   |   | 24                   | 8                              | 1              | 43        |    |
|                      | Laos        |                              |   |   | 3                    |                                |                | 3         |                              |   |   |                      |                                |                | 0         |    |
|                      | Malaysia    | 1                            |   |   | 13                   |                                | 1              | 15        |                              | 2   |   | 2                    |                                |                | 4         |    |
|                      | Mongol      |                              |   |   | 9                    | 2                              |                | 11        |                              |   |   | 1                    |                                |                | 1         |    |
|                      | Myanmar     |                              | 2   |   | 7                    | 12                             |                | 21        |                              | 3   | 4   | 2                    | 3                              |                | 12        |    |
|                      | Nepal       |                              | 2   | 1   |                      |                                |                | 3         |                              |   |   |                      |                                |                | 0         |    |
|                      | Philippines | 1                            | 2   |   | 7                    |                                |                | 10        |                              |   |   | 14                   |                                |                | 14        |    |
|                      | Singapore   | 3                            | 2   |   | 12                   | 3                              |                | 20        | 1                            | 11  |   | 1                    |                                |                | 13        |    |
|                      | Sri Lanka   |                              |   |   | 1                    |                                |                | 1         |                              |   |   |                      |                                |                | 0         |    |
|                      | Taiwan      | 4                            | 1   |   | 32                   | 3                              | 4              | 44        |                              |   |   | 9                    | 3                              |                | 12        |    |
|                      | Thailand    | 7                            |   |   | 32                   | 2                              |                | 41        |                              |   | 26  | 22                   | 1                              |                | 49        |    |
|                      | Vietnam     | 6                            |   |   | 17                   | 1                              | 1              | 25        |                              |   |   | 3                    |                                |                | 3         |    |
| Sub-total            |             | 34                           | 16  | 2   | 315                  | 43                             | 13             | 423       | 17                           | 24  | 30  | 128                  | 25                             | 3              | 227       |    |
| Middle East          | Iran        |                              |   |   |                      | 1                              | 1              |           |                              |   |   | 1                    |                                |                | 1         |    |
|                      | Israel      |                              |   |   |                      |                                | 0              | 1         |                              |   |   | 1                    |                                |                | 2         |    |
|                      | Oman        |                              |   |   |                      |                                | 0              |           |                              |   |   | 1                    |                                |                | 1         |    |
|                      | Pakistan    |                              |   |   |                      | 1                              |                | 1         |                              |   |   |                      |                                |                | 0         |    |
|                      | Turkey      |                              | 2   |   | 3                    |                                | 2              | 7         |                              |   |   | 2                    |                                |                | 2         |    |
|                      | UAE         |                              |   |   | 2                    |                                | 1              | 3         |                              |   |   |                      |                                |                | 0         |    |
|                      | Sub-total   |                              | 0   | 2   | 0                    | 5                              | 2              | 3         | 12                           | 1   | 0   | 0                    | 5                              | 0              | 0         | 6  |
|                      | Africa      | Burkina Faso                 |   |   |                      |                                |                | 0         |                              |   |   |                      |                                | 1              |           | 1  |
| Egypt                |             |                              |   |   |                      |                                | 0              |           |                              |   | 3   |                      |                                |                | 3         |    |
| Ethiopia             |             |                              |   |   |                      |                                | 1              | 1         |                              |   |   |                      |                                |                | 0         |    |
| Kenya                |             |                              |   |   | 2                    |                                |                | 2         |                              |   |   |                      |                                |                | 0         |    |
| South Africa         |             |                              |   |   |                      | 1                              |                | 1         |                              |   |   |                      |                                |                | 0         |    |
| Sudan                |             |                              |   |   | 1                    |                                |                | 1         |                              | 1   |   |                      |                                |                | 1         |    |
| Tanzania             |             |                              | 2   |   | 1                    |                                |                | 3         |                              | 1   |   | 1                    |                                |                | 2         |    |
| Sub-total            |             | 0                            | 2   | 0   | 4                    | 1                              | 1              | 8         | 0                            | 2   | 0   | 4                    | 1                              | 0              | 7         |    |
| Oceania              | Australia   |                              | 3   |   | 37                   |                                | 1              | 41        | 1                            |   |   | 5                    |                                |                | 6         |    |
|                      | New Zealand |                              |   |   | 5                    | 1                              | 6              | 1         |                              |   |   | 4                    |                                |                | 5         |    |
|                      | Fiji        |                              |   |   |                      |                                | 0              |           |                              |   |   | 1                    |                                |                | 1         |    |
|                      | Sub-total   |                              | 0   | 3   | 0                    | 42                             | 1              | 1         | 47                           | 2   | 0   | 0                    | 6                              | 4              | 0         | 12 |
| North America        | Canada      | 1                            |   |   | 16                   | 2                              | 1              | 20        |                              | 1   |   | 3                    | 7                              |                | 11        |    |
|                      | USA         | 8                            | 16  |   | 248                  | 6                              | 12             | 290       | 3                            | 2   |   | 24                   | 19                             |                | 48        |    |
|                      | Sub-total   | 9                            | 16  | 0   | 264                  | 8                              | 13             | 310       | 3                            | 3   | 0   | 27                   | 26                             | 0              | 59        |    |
| South-Middle America | Argentina   | 1                            |   |   |                      |                                | 1              |           |                              |   |   | 1                    |                                | 1              | 2         |    |
|                      | Jamaica     |                              |   |   |                      |                                | 0              |           |                              |   |   | 1                    |                                |                | 1         |    |
|                      | Brazil      |                              |   |   |                      |                                | 0              |           |                              |   |   |                      |                                | 1              | 1         |    |
|                      | Mexico      |                              | 1   |   | 1                    |                                |                | 2         | 2                            |   |   | 1                    | 5                              |                | 8         |    |
|                      | Sub-total   | 1                            | 1   | 0   | 1                    | 0                              | 0              | 3         | 2                            | 0   | 0   | 3                    | 5                              | 2              | 12        |    |
| Europe               | Austria     |                              | 5   |   | 22                   | 2                              | 1              | 30        |                              |   |   |                      |                                | 1              | 1         |    |
|                      | Azerbaijan  |                              |   |   |                      |                                | 0              | 1         |                              |   |   |                      |                                |                | 1         |    |
|                      | Belgium     |                              |   |   | 1                    |                                |                | 1         |                              |   |   |                      |                                |                | 0         |    |
|                      | Croatia     |                              |   |   | 2                    |                                |                | 2         |                              |   |   |                      |                                |                | 0         |    |
|                      | Czech       | 1                            | 1   |   | 6                    | 2                              |                | 10        |                              |   |   | 1                    |                                |                | 1         |    |
|                      | Denmark     |                              | 1   |   | 8                    |                                |                | 9         | 1                            |   |   |                      |                                |                | 1         |    |
|                      | Finland     |                              |   |   | 5                    |                                |                | 5         |                              |   |   |                      |                                |                | 0         |    |
|                      | France      | 8                            | 3   |   | 48                   | 1                              |                | 60        | 3                            |   |   | 4                    | 4                              |                | 11        |    |
|                      | Germany     | 5                            |   |   | 59                   |                                | 5              | 69        | 1                            | 1   |   | 8                    | 3                              |                | 13        |    |
|                      | Greece      |                              |   |   | 3                    |                                |                | 3         |                              |   |   |                      |                                |                | 0         |    |
|                      | Hungary     |                              |   |   | 3                    |                                |                | 3         |                              |   |   | 1                    |                                |                | 1         |    |
|                      | Ireland     |                              | 1   |   | 2                    |                                |                | 3         |                              |   |   |                      |                                |                | 0         |    |
|                      | Italy       |                              | 3   |   | 26                   | 2                              | 3              | 34        | 1                            |   |   |                      |                                |                | 1         |    |
|                      | Kazakhstan  |                              |   |   | 1                    | 1                              |                | 2         |                              |   |   | 5                    |                                |                | 5         |    |
|                      | Latvia      |                              |   |   | 1                    |                                |                | 1         |                              |   |   |                      | 3                              |                | 3         |    |
|                      | Lithuania   |                              |   |   |                      |                                |                | 0         |                              |   |   | 1                    |                                |                | 1         |    |
|                      | Malta       |                              |   |   |                      |                                |                | 0         |                              |   |   | 1                    |                                |                | 1         |    |
|                      | Netherlands |                              |   |   | 4                    |                                |                | 4         |                              |   |   | 1                    |                                |                | 1         |    |
|                      | Norway      |                              |   |   | 3                    |                                |                | 3         |                              |   |   |                      |                                |                | 0         |    |
|                      | Poland      |                              |   |   | 4                    | 1                              |                | 5         |                              |   |   |                      |                                |                | 0         |    |
|                      | Portugal    | 1                            |   |   | 4                    |                                |                | 5         |                              |   |   |                      |                                |                | 0         |    |
|                      | Romania     |                              |   |   | 2                    |                                |                | 2         |                              |   |   |                      |                                |                | 0         |    |
|                      | Russia      |                              |   |   | 16                   | 1                              |                | 17        |                              |   |   | 1                    |                                |                | 1         |    |
|                      | Serbia      |                              |   |   |                      |                                |                | 0         | 1                            |   |   |                      |                                |                | 1         |    |
|                      | Slovakia    |                              |   |   | 1                    |                                |                | 1         |                              |   |   |                      |                                |                | 0         |    |
|                      | Slovenia    |                              |   |   | 2                    |                                |                | 2         |                              |   |   | 1                    |                                |                | 1         |    |
|                      | Spain       | 3                            |   |   | 24                   | 1                              | 1              | 29        | 1                            | 1   |   | 2                    |                                |                | 4         |    |
|                      | Sweden      |                              |   |   | 6                    | 1                              |                | 7         |                              |   |   |                      |                                |                | 0         |    |
| Switzerland          | 1           |                              |   | 19  |                      | 4                              | 24             |           | 1                            |   | 2   |                      | 1                              | 4              |           |    |
| UK                   | 2           | 2                            |   | 44  | 1                    | 3                              | 52             |           |                              |   | 4   | 1                    | 1                              | 6              |           |    |
| Uzbekistan           |             |                              |   |   |                      |                                | 1              |           |                              |   |   |                      |                                | 0              |           |    |
| Sub-total            |             | 21                           | 16  | 0   | 316                  | 13                             | 18             | 384       | 9                            | 3   | 0   | 32                   | 11                             | 3              | 58        |    |
| Total                |             | 65                           | 56  | 2   | 947                  | 68                             | 49             | 1,187     | 34                           | 32  | 30  | 205                  | 72                             | 8              | 381       |    |

# INTERNATIONAL STUDENTS

(As of May 1, 2018)

| Region                    | Country                          | Faculties      |                   |          |                  |           | Graduate Schools |                   |                  |                           |           | Japanese Language Trainees | Total |
|---------------------------|----------------------------------|----------------|-------------------|----------|------------------|-----------|------------------|-------------------|------------------|---------------------------|-----------|----------------------------|-------|
|                           |                                  | Undergraduates | Research Students | Auditors | Special Auditors | Sub-total | Graduates        | Research Students | Special Auditors | Special Research Students | Sub-total |                            |       |
| Asia                      | Bangladesh                       |                |                   |          |                  | 0         | 31               |                   |                  |                           | 31        |                            | 31    |
|                           | China                            | 30             | 5                 |          | 49               | 84        | 99               | 19                | 4                | 7                         | 129       |                            | 213   |
|                           | India                            |                |                   |          | 1                | 1         | 4                |                   |                  |                           | 4         |                            | 5     |
|                           | Indonesia                        |                |                   |          | 8                | 8         | 40               |                   | 3                | 2                         | 45        |                            | 53    |
|                           | Korea                            | 7              |                   |          | 19               | 26        | 4                |                   |                  |                           | 4         |                            | 30    |
|                           | Malaysia                         | 14             |                   |          | 3                | 17        | 5                |                   |                  |                           | 5         |                            | 22    |
|                           | Mongol                           | 5              |                   |          | 2                | 7         | 4                |                   | 1                |                           | 5         |                            | 12    |
|                           | Myanmar                          |                |                   |          |                  | 0         | 16               |                   |                  |                           | 16        |                            | 16    |
|                           | Nepal                            |                |                   |          |                  | 0         | 2                |                   |                  |                           | 2         |                            | 2     |
|                           | Philippines                      |                |                   |          | 2                | 2         | 4                |                   | 1                |                           | 5         |                            | 7     |
|                           | Singapore                        |                |                   |          |                  | 0         | 1                |                   |                  |                           | 1         |                            | 1     |
|                           | Taiwan                           |                |                   |          | 14               | 14        | 9                |                   |                  | 2                         | 11        |                            | 25    |
|                           | Thailand                         |                |                   |          | 4                | 4         | 6                |                   | 1                | 6                         | 13        |                            | 17    |
|                           | Vietnam                          |                |                   |          | 5                | 5         | 5                |                   |                  |                           | 5         |                            | 10    |
|                           | Sub-total                        |                | 56                | 5        | 0                | 107       | 168              | 230               | 19               | 10                        | 17        | 276                        | 0     |
| Middle East               | Afghanistan                      |                |                   |          |                  | 0         | 9                |                   |                  |                           | 9         |                            | 9     |
|                           | Iran                             | 1              |                   |          |                  | 1         | 1                |                   |                  |                           | 1         |                            | 2     |
|                           | Iraq                             |                |                   |          |                  | 0         | 1                |                   |                  |                           | 1         |                            | 1     |
|                           | Oman                             |                |                   |          |                  | 0         | 1                |                   |                  |                           | 1         |                            | 1     |
|                           | Turkey                           |                |                   |          |                  | 0         |                  |                   | 2                |                           | 2         |                            | 2     |
|                           | Sub-total                        |                | 1                 | 0        | 0                | 0         | 1                | 12                | 0                | 2                         | 0         | 14                         | 0     |
| South-Middle America      | Brazil                           |                |                   |          | 2                | 2         |                  |                   |                  |                           | 0         |                            | 2     |
|                           | Costa Rica                       |                |                   |          |                  | 0         |                  | 1                 |                  |                           | 1         |                            | 1     |
|                           | Dominican Republic               |                |                   |          |                  | 0         | 1                |                   |                  |                           | 1         |                            | 1     |
|                           | El Salvador                      |                |                   |          |                  | 0         |                  |                   |                  |                           | 0         | 1                          | 1     |
|                           | Guatemala                        |                |                   |          |                  | 0         | 1                |                   |                  |                           | 1         |                            | 1     |
|                           | Mexico                           |                |                   |          | 2                | 2         | 1                |                   |                  |                           | 1         |                            | 3     |
|                           | Sub-total                        |                | 0                 | 0        | 0                | 4         | 4                | 3                 | 1                | 0                         | 0         | 4                          | 1     |
| Oceania                   | Australia                        |                |                   |          | 2                | 2         |                  |                   |                  |                           | 0         |                            | 2     |
|                           | Independent State of Samoa       |                |                   |          |                  | 0         | 2                |                   |                  |                           | 2         |                            | 2     |
|                           | Kiribati                         |                |                   |          |                  | 0         | 1                |                   |                  |                           | 1         |                            | 1     |
|                           | Papua New Guinea                 |                |                   |          |                  | 0         | 1                |                   |                  |                           | 1         |                            | 1     |
|                           | Sub-total                        |                | 0                 | 0        | 0                | 2         | 2                | 4                 | 0                | 0                         | 0         | 4                          | 0     |
| Africa                    | Benin                            |                |                   |          |                  | 0         | 1                |                   |                  |                           | 1         |                            | 1     |
|                           | Cabo Verde                       |                |                   |          |                  | 0         | 1                |                   |                  |                           | 1         |                            | 1     |
|                           | Democratic Republic of the Congo |                |                   |          |                  | 0         | 1                |                   |                  | 1                         | 2         |                            | 2     |
|                           | Egypt                            |                |                   |          |                  | 0         | 3                |                   |                  |                           | 3         | 1                          | 4     |
|                           | Ghana                            |                |                   |          |                  | 0         | 3                |                   |                  |                           | 3         |                            | 3     |
|                           | Kenya                            |                |                   |          |                  | 0         | 2                | 1                 |                  |                           | 3         |                            | 3     |
|                           | Mauritania                       |                |                   |          |                  | 0         | 1                |                   |                  |                           | 1         |                            | 1     |
|                           | Morocco                          |                |                   |          |                  | 0         | 1                |                   |                  | 1                         | 2         |                            | 2     |
|                           | Nigeria                          |                |                   |          |                  | 0         | 3                |                   |                  |                           | 3         |                            | 3     |
|                           | Republic of Liberia              |                |                   |          |                  | 0         | 1                |                   |                  |                           | 1         |                            | 1     |
|                           | Senegal                          |                |                   |          |                  | 0         | 1                |                   |                  |                           | 1         |                            | 1     |
|                           | Sudan                            |                |                   |          |                  | 0         | 1                |                   |                  |                           | 1         |                            | 1     |
|                           | Tanzania                         |                |                   |          |                  | 0         | 3                |                   |                  |                           | 3         |                            | 3     |
| Uganda                    | 1                                |                |                   |          | 1                |           |                  |                   |                  | 0                         |           | 1                          |       |
| Sub-total                 |                                  | 1              | 0                 | 0        | 0                | 1         | 22               | 1                 | 0                | 2                         | 25        | 1                          | 27    |
| Europe                    | Armenia                          |                |                   |          |                  | 0         | 1                |                   |                  |                           | 1         |                            | 1     |
|                           | Bulgaria                         |                |                   |          |                  | 0         | 1                |                   |                  |                           | 1         |                            | 1     |
|                           | France                           |                |                   |          | 3                | 3         |                  |                   | 3                | 5                         | 8         |                            | 11    |
|                           | Germany                          |                |                   |          | 3                | 3         |                  |                   |                  |                           | 0         |                            | 3     |
|                           | Poland                           |                |                   |          |                  | 0         | 1                |                   |                  |                           | 1         |                            | 1     |
|                           | Romania                          |                |                   |          | 1                | 1         |                  |                   |                  |                           | 0         |                            | 1     |
|                           | Switzerland                      |                |                   |          | 2                | 2         |                  |                   |                  |                           | 0         |                            | 2     |
|                           | UK                               |                |                   |          | 1                | 1         |                  |                   |                  |                           | 0         |                            | 1     |
| Sub-total                 |                                  | 0              | 0                 | 0        | 10               | 10        | 3                | 0                 | 3                | 5                         | 11        | 0                          | 21    |
| Total (From 51 countries) |                                  | 58             | 5                 | 0        | 123              | 186       | 274              | 21                | 15               | 24                        | 334       | 2                          | 522   |

## JAPANESE STUDENTS ABROAD

The table below shows the number of students who have studied abroad at overseas universities with which Kumamoto University has concluded a student exchange agreement, or have otherwise mutually agreed on a student exchange.

(The period of study abroad is not indicated)

| Country                        | Partner University  | Number of Students |
|--------------------------------|---|--------------------|
| Australia                      | The University of Newcastle   | 12                 |
| Australia                      | University of Technology, Sydney  | 3                  |
| Canada                         | University of Alberta   | 24                 |
| Canada                         | University of Calgary   | 1                  |
| China                          | Anhui University  | 1                  |
| China                          | Shandong University   | 5                  |
| China                          | Tongji University   | 1                  |
| Czech                          | Institute of Chemical Technology in Prague                              | 1                  |
| France                         | Bordeaux Montaigne University   | 2                  |
| France                         | University of Lorraine  | 2                  |
| Germany                        | Ruhr University Bochum  | 1                  |
| Germany                        | Saarland University   | 2                  |
| Germany                        | University of Bonn  | 2                  |
| Indonesia                      | Institut Teknologi Sepuluh Nopember                                     | 20                 |
| Korea                          | Dong-A University   | 27                 |
| Korea                          | KAIST   | 10                 |
| Korea                          | Korea University  | 11                 |
| Korea                          | Pukyong National University   | 2                  |
| Korea                          | University of Seoul   | 2                  |
| Malaysia                       | Universiti Teknologi PETRONAS   | 1                  |
| New Zealand                    | Massey University   | 9                  |
| Poland                         | Warsaw University   | 1                  |
| Philippines                    | Ateneo de Manila University   | 10                 |
| Russia                         | Novosibirsk State Technical University                                  | 1                  |
| Slovenia                       | University of Maribor   | 2                  |
| Switzerland                    | University of Zurich  | 1                  |
| Taiwan                         | Chang Jung Christian University   | 2                  |
| Taiwan                         | National Kaohsiung University of Science and Technology                 | 20                 |
| Taiwan                         | Southern Taiwan University of Science and Technology                    | 20                 |
| UK                             | Durham University   | 2                  |
| UK                             | University of Leeds   | 23                 |
| USA                            | Center for Inflammation, Immunity & Infection, Georgia State University | 1                  |
| USA                            | Montana State University  | 9                  |
| Vietnam                        | Foreign Trade University  | 2                  |
| Total (April 2017- March 2018) |   | 233                |

## INTERNATIONAL HOUSE

Kumamoto University International House Residence A was constructed in 1985 to provide accommodation for international students and foreign researchers. To respond to the increase in the number of foreign students and researchers, Residence B was built in 1995, followed by Residences C, D and E in November 2009. As of May 2018, international students and researchers from about 33 countries are residing in all 232 rooms. The I-House office in Residence A is available to respond to questions from residents and to provide consultation and assistance.

(Address)

7-763 Kurokami, Chuo-ku, Kumamoto City, Kumamoto 860-0862

(Location)

About 1.5 km east of the Kurokami Campus



| Residence                    | Room Type |          |            |               | Total      |
|------------------------------|-----------|----------|------------|---------------|------------|
|                              | Family    | Couple   | Single     | Shared (quad) |            |
| A                            | 3         | 3        | 49         |               | 55         |
| B                            | 4         | 3        | 50         |               | 57         |
| C                            |           |          |            | 36            | 36         |
| D                            |           |          |            | 36            | 36         |
| E                            |           |          | 48         |               | 48         |
| <b>Total number of rooms</b> | <b>7</b>  | <b>6</b> | <b>147</b> | <b>72</b>     | <b>232</b> |

### Common Facilities

|                     |    |
|---------------------|----|
| Lounge              | 2  |
| Conference room     | 1  |
| Japanese-style room | 1  |
| Public Lobby        | 1  |
| Multipurpose room   | 1  |
| Laundry room        | 10 |

## INTERNATIONAL PROGRAMS

### Kumamoto University Short-Term Exchange Program

The Kumamoto University Short-Term Exchange Program is designed for full-time undergraduate students who are from universities that have a student exchange agreement with Kumamoto University, and have foreign citizenship. The program offers undergraduate international students, who are interested in the Japanese language, Japanese and Asian society and culture, advanced science and technology, and interactions with international students, the chance to study for up to a year in Japan while still retaining their full-time status at their home universities. The university also hopes that the program will promote exchange between university students from foreign countries and Japanese university students.

#### • E Course (Program in English)

As a general rule, this course is intended for third year undergraduate students who are currently at their home universities. Students in this course mainly take Short-Term Exchange Program classes taught in English. Also, they can take Japanese Language and Japanese Studies classes. The students can take specialized subjects for undergraduate students of each faculty and General Education classes which are not included in program completion requirements as well.

(Note: Most specialized subjects and General Education classes are taught in Japanese.)

#### • J Course (Program in Japanese)

Students in this course mainly take classes in specialized subjects for undergraduate students of each faculty, as well as classes in the Japanese Language. Also, they can take General Education classes and Short-Term Exchange Program classes taught in English.



### Kumamoto University Japanese Studies Program

The Kumamoto University Japanese Studies program is a one-year program intended for undergraduate international students who are majoring in fields related to Japanese language and culture. The aim of the program is to improve Japanese proficiency, to impart the knowledge and skills required to conduct Japanese studies, and to help students acquire a practical knowledge of Japanese language and culture for use in society.

(Note: Application is required through the Japanese embassy or consulate general in your own country, or Kumamoto University.)



## JAPANESE LANGUAGE CLASSES

The College of Cross-Cultural and Multidisciplinary Studies offers the following classes related to the Japanese language for international students and researchers at Kumamoto University.

- Japanese Language classes (General Education classes)
- Japanese classes for the “Intensive Japanese course for Japanese Government Scholarship students”, “Teacher-Training students”, and “undergraduate students in the Japan - Korea Joint Exchange Program in Science and Engineering”
- Japanese Language Course for Beginners

Undergraduate students, students in the Short-Term Exchange Program and students in the Japanese Studies Program may enroll in most of these classes for academic credits.

Various levels of classes are offered so that students can choose classes according to their Japanese proficiency and their interests.



## KUMAMOTO UNIVERSITY SUMMER AND SPRING PROGRAM

At Kumamoto University, we offer two short-term study programs in Kumamoto for undergraduate students from our partner universities – the Summer Program, held in late July and early August; and the Spring Program, held in February and March.

This program is designed to provide an opportunity for undergraduate students from overseas partner universities to enjoy a short stay in Kumamoto while deepening their interest and understanding of life in Japan, as well as the natural and scientific aspects of Kumamoto and Kumamoto University.

Over the course of the 10-day program, participants enjoy lectures from professors at Kumamoto University, educational excursions to Minamata, Mt. Aso, and Kumamoto Castle, first-hand cultural experiences, and an international exchange event with local high school students.

All participating students give positive reviews of their experiences, with many expressing their gratitude at being given the opportunity to come to Japan, and an interest in returning to Kumamoto University to study in the future.



## INTERNATIONAL ACTIVITIES

### Kumamoto University hosts a Top Global University Project Symposium

On Monday, March 5, 2018, Kumamoto University hosted a Top Global University Project Symposium.

Under the theme of "Globalization of Universities and Community-based Development of Global Human Resources," the symposium was held to enable participants to exchange information and opinions so as to help resolve various issues emerging from ongoing globalization in local communities.

The symposium was attended by about 100 people from universities, high schools and other academic institutions and organizations in and outside Kumamoto Prefecture. Each lecture was followed by a lively discussion.



The President greets participants

### The 1st IROAST Symposium "Plant Cell and Developmental Biology: Approaches to Multiscale Biosystems" held on November 14

The 1st IROAST Symposium on "Plant Cell and Developmental Biology: Approaches to Multiscale Biosystems" was held at the 100th Anniversary Hall on November 14, 2017. The symposium was organized by IROAST Professor Mitsuhiro Aida, Associate Professor Takumi Higaki and Assistant Professor Takashi Ishida. Four leading scientists from overseas institutions and four from universities in Japan were invited to give talks, and six researchers from Kumamoto University, including the organizers, also gave talks. There were twenty-one poster presentations posted in the symposium and banquet venues. Some 80 researchers and students attended the symposium.



Presentation by overseas invited guest

### Kumamoto University Alumni Meeting takes place in Hanoi, Vietnam

On March 27, 2018, a Kumamoto University Alumni Meeting was held in Hanoi city, Vietnam. Thanks to the cooperation of Associate Professor Bach, National University of Civil Engineering, who had previously studied abroad in Kumamoto University, 15 Vietnamese former Kumamoto University students, Mrs. Do Hoang Ngan and Mr. Hoang Van Nhan, the Deputy Chairman of Japan Alumni of Vietnam (JAV), participated in the meeting.



(From left) Prof. Bach and Vice president Takashima

### Useful and Unique Natural Products for Drug Discovery and Development (UpRod) Kickoff Symposium held at Kumamoto University

The Useful and Unique Natural Products for Drug Discovery and Development (UpRod) Kickoff Symposium was held on Monday, March 19, 2018 in response to the recognition of Kumamoto University's and Kumamoto Prefecture's implementation of UpRod as a Program for Building Regional Innovation Ecosystems. These programs are run under the aegis of the Ministry of Education, Culture, Sports, Science and Technology (MEXT). The grant equals 140 million yen/year, for 5 years. Using the Useful Natural Product Library at Kumamoto University, UpRod aims to establish cultivation systems that can provide steady quantities of high-quality and useful natural products developed in cooperation with Kumamoto University and local businesses. UpRod also aims to establish an evaluation system that will include a systematic serial process of extractions, analyses and evaluations of useful natural products in the library, which will ultimately lead to the production of innovative medical products. The symposium was successfully concluded with a total of 247 participants from Japan and overseas.



Symposium participants group photo

# ADMINISTRATIVE OFFICERS

(As of April 1, 2018)

|  |                                |                                    |
|--|--------------------------------|------------------------------------|
| <b>President</b>   |                                | HARADA Shinji, M.D., D.M.Sc.       |
| <b>Trustees</b>  | <b>Vice-Presidents</b>         | FURUSHIMA Mikio, D.Sc.             |
|  |                                | MATSUMOTO Yasumichi, D.Eng.        |
|  |                                | YAMAZAKI Kodo, LL.D.               |
|  |                                | TAKEYA Motohiro, M.D., Ph.D.       |
|  | <b>Administrative Director</b> | ARIMATSU Masahiro                  |
|  |                                | SHIOTANI Yoshiko                   |
| <b>Vice-Presidents</b>   |                                | TAKASHIMA Kazuki, D.Eng.           |
|  |                                | TANIHARA Hidenobu, M.D., Ph.D.     |
| <b>Auditors</b>  |                                | ASAI Yutaka                        |
|  |                                | TSURUTA Tetsuzo                    |
| <b>Faculty of Letters</b>  | <b>Dean</b>                    | MIZUMOTO Toyofumi, M.Lit.          |
| Center for Soseki and Hearn Studies  | <b>Director</b>                | MIZUMOTO Toyofumi, M.Lit.          |
| <b>Faculty of Education</b>  | <b>Dean</b>                    | YAHATA Hideyuki, Ph.D.             |
| Center for Educational Research and School Development                             | <b>Director</b>                | HOSHIKAWA Takashi, Ph.D.           |
| Kindergarten Attached to the Faculty of Education                                  | <b>Principal</b>               | OGATA Nobuyuki, M.ed.,M.F.A.       |
| Elementary School Attached to the Faculty of Education                             | <b>Principal</b>               | SHIMADA Hideaki, Ph.D.             |
| Junior High School Attached to the Faculty of Education                            | <b>Principal</b>               | TO Takehiko, Ph.D.                 |
| Special Support School Attached to the Faculty of Education                        | <b>Principal</b>               | YAHATA-TANIGUCHI Ayako, Ph.D.      |
| <b>Faculty of Law</b>  | <b>Dean</b>                    | FUKAMACHI Kiminobu, LL.M.          |
| <b>Faculty of Science</b>  | <b>Dean</b>                    | ICHIKAWA Fusao, D. Sc.             |
| <b>School of Medicine</b>  | <b>Dean</b>                    | ANDO Yukio, M.D., Ph.D.            |
| <b>University Hospital</b>   | <b>Director</b>                | TANIHARA Hidenobu, M.D., Ph.D.     |
| <b>School of Pharmacy</b>  | <b>Dean</b>                    | KAI Hirofumi, Ph.D.                |
| Research Institute for Drug Discovery  | <b>Director</b>                | SUGIMOTO Yukihiko, Ph.D.           |
| Center for Clinical Pharmaceutical Sciences  | <b>Director</b>                | HIRATA Sumio, Ph.D.                |
| Eco-Frontier Center of Medical Resources   | <b>Director</b>                | WATANABE Takashi, Ph.D.            |
| <b>Faculty of Engineering</b>  | <b>Dean</b>                    | USAGAWA Tsuyoshi, D.Eng.           |
| Engineering Research Equipment Center  | <b>Director</b>                | KUNITAKE Masashi, D.Eng.           |
| Education Center for Global Human Resources in Engineering                         | <b>Director</b>                | FUJIYOSHI Takanori, D.Eng.         |
| <b>Graduate School of Education</b>  | <b>Dean</b>                    | YAHATA Hideyuki, Ph.D.             |
| <b>Graduate School of Social and Cultural Sciences</b>                             | <b>Dean</b>                    | TANAKA Tomohiro, Ph.D.             |
| <b>Faculty of Humanities and Social Sciences</b>                                   | <b>Dean</b>                    | MIZUMOTO Toyofumi, M.Lit.          |
| <b>Faculty of Advanced Science and Technology</b>                                  | <b>Dean</b>                    | USAGAWA Tsuyoshi, D.Eng.           |
| <b>Faculty of Life Sciences</b>  | <b>Dean</b>                    | ANDO Yukio, M.D., Ph.D.            |
| Southern Kyushu and Okinawa Unit Center of EcoChil Study (Japan Eco & Child Study) | <b>Director</b>                | KATOH Takahiko, M.D., Ph.D.        |
| Center for Medical Education and Research  | <b>Director</b>                | OIKE Yuichi, M.D., Ph.D.           |
| Center for Metabolic Regulation of Healthy Aging                                   | <b>Director</b>                | YAMAGATA Kazuya, M.D., Ph.D.       |
| <b>Graduate School of Science and Technology</b>                                   | <b>Dean</b>                    | ICHIKAWA Fusao, D.Sc.              |
| Global Joint Education Center for Science and Technology                           | <b>Director</b>                | ICHIKAWA Fusao, D.Sc.              |
| <b>Graduate School of Medical Sciences</b>   | <b>Dean</b>                    | ANDO Yukio, M.D., Ph.D.            |
| <b>Graduate School of Health Sciences</b>  | <b>Dean</b>                    | MAEDA Hitomi, RN, Ph.D.            |
| <b>Graduate School of Pharmaceutical Sciences</b>                                  | <b>Dean</b>                    | KAI Hirofumi, Ph.D.                |
| <b>School of Law</b>   | <b>Dean</b>                    | BABA Kei, BEc.                     |
| Clinical Legal Education and Research Center                                       | <b>Director</b>                | BABA Kei, BEc.                     |
| <b>Institute of Molecular Embryology and Genetics</b>                              | <b>Director</b>                | NISHINAKAMURA Ryuichi, M.D., Ph.D. |
| Center for Organ Regeneration Research   | <b>Director</b>                | ERA Takumi, MD., Ph.D.             |
| <b>Institute of Pulsed Power Science</b>   | <b>Director</b>                | MATSUMOTO Yasumichi, D.Eng.        |
| <b>Priority Organization for Innovation and Excellence</b>                         | <b>Director</b>                | HARADA Shinji, M.D., D.M.Sc.       |
| <b>Kumamoto Innovative Development Organization</b>                                | <b>Director</b>                | MATSUMOTO Yasumichi, D.Eng.        |
| <b>Organization for Globalization</b>  | <b>Director</b>                | TAKASHIMA Kazuki, D.Eng.           |
| <b>Headquarters for Admissions and Education</b>                                   | <b>Director</b>                | FURUSHIMA Mikio, D.Sc.             |
| <b>International Research Center for Medical Sciences</b>                          | <b>Director</b>                | SUDA Toshio, M.D., Ph.D.           |
| International Research Organization for Advanced Science and Technology            | <b>Director</b>                | HIYAMA Takashi, D.Eng.             |
| <b>Center for Management of Information Technologies</b>                           | <b>Director</b>                | SUGITANI Kenichi, D.Eng.           |
| <b>College of Cross-Cultural and Multidisciplinary Studies</b>                     | <b>Director</b>                | KOIKE Ursula Helena, D. Lit.       |
| <b>The Memorial Museum of the Fifth High School</b>                                | <b>Director</b>                | ITO Ryuichi, D.Eng.                |
| <b>EISEI-BUNKO Research Center</b>   | <b>Director</b>                | INABA Tsuguharu, D.Lit.            |
| <b>Research Center for Instructional Systems</b>                                   | <b>Director</b>                | SUZUKI Katsuaki, Ph.D.             |
| Center for Water Cycle, Marine Environment, and Disaster Management                | <b>Director</b>                | KAKIMOTO Ryuji, Ph.D.              |
| <b>Magnesium Research Center</b>   | <b>Director</b>                | KAWAMURA Yoshihito, Ph.D.          |
| <b>Institute of Resource Development and Analysis</b>                              | <b>Director</b>                | OIKE Yuichi, M.D., Ph.D.           |
| <b>Center for AIDS Research</b>  | <b>Director</b>                | MATSUSHITA Shuzo, M.D., Ph.D.      |
| <b>Environmental Safety Center</b>   | <b>Director</b>                | TOGAWA Kenichi, D.Ecs.             |
| <b>Research Center for Buried Cultural Properties</b>                              | <b>Director</b>                | ITO Masahiko, D. Lit.              |
| <b>University Library</b>  | <b>Director</b>                | TAKAMIYA Masayuki, D.Sci.          |
| <b>Health Care Center</b>  | <b>Director</b>                | FUJISE Noboru, M.D., Ph.D.         |



# NUMBER OF UNIVERSITY PERSONNEL

(As of May 1, 2018)

| Classification   | Professors | Associate Professors | Lecturers (Full-time) | Assistant Professors | Research Assistant | Teachers (Attached School) | Sub-total  | Administrative and Technical Staff | Total        |
|--|------------|----------------------|-----------------------|----------------------|--------------------|----------------------------|------------|------------------------------------|--------------|
| Faculty of Education   |            |                      |                       |                      |                    | 84                         | 84         | 3                                  | 87           |
| Faculty of Science   |            |                      |                       |                      |                    |                            | 0          | 3                                  | 3            |
| School of Pharmacy   | 3          | 3                    |                       | 1                    | 1                  |                            | 8          | 5                                  | 13           |
| Faculty of Engineering   |            |                      |                       |                      |                    |                            | 0          | 42                                 | 42           |
| Graduate School of Education                                       | 31         | 31                   | 1                     |                      |                    |                            | 63         |                                    | 63           |
| Faculty of Humanities and Social Sciences                          | 63         | 65                   | 5                     |                      | 1                  |                            | 134        |                                    | 134          |
| Faculty of Advanced Science and Technology                         | 81         | 85                   | 2                     | 32                   |                    |                            | 200        |                                    | 200          |
| Faculty of Life Sciences   | 72         | 51                   | 15                    | 98                   |                    |                            | 236        | 9                                  | 245          |
| Institute of Molecular Embryology and Genetics                     | 8          | 4                    | 1                     | 8                    |                    |                            | 21         | 8                                  | 29           |
| Institute of Pulsed Power Science                                  | 7          | 5                    |                       | 2                    |                    |                            | 14         | 1                                  | 15           |
| Priority Organization for Innovation and Excellence                |            | 9                    |                       | 6                    |                    |                            | 15         |                                    | 15           |
| Kumamoto Innovative Development Organization                       | 2          | 7                    |                       |                      |                    |                            | 9          | 3                                  | 12           |
| Headquarters for Admissions and Education                          | 1          | 3                    |                       |                      |                    |                            | 4          |                                    | 4            |
| Center for Management of Information Technologies                  | 4          | 1                    |                       | 1                    |                    |                            | 6          | 3                                  | 9            |
| College of Cross-Cultural and Multidisciplinary Studies            | 2          | 1                    | 3                     |                      |                    |                            | 6          |                                    | 6            |
| The Memorial Museum of the Fifth High School                       |            | 1                    |                       |                      |                    |                            | 1          |                                    | 1            |
| Eisei-Bunko Research Center  | 1          | 1                    |                       |                      |                    |                            | 2          |                                    | 2            |
| Research Center for Instructional Systems                          | 3          | 4                    |                       |                      |                    |                            | 7          |                                    | 7            |
| Center for Water Cycle, Marine Environment and Disaster Management | 4          | 6                    |                       | 1                    |                    |                            | 11         | 1                                  | 12           |
| Magnesium Research Center  | 2          | 1                    |                       |                      |                    |                            | 3          |                                    | 3            |
| Institute of Resource Development and Analysis                     | 3          | 2                    | 2                     | 5                    |                    |                            | 12         | 7                                  | 19           |
| Center for AIDS Research   | 6          | 1                    |                       | 1                    |                    |                            | 8          |                                    | 8            |
| Environmental Safety Center  |            | 1                    |                       |                      |                    |                            | 1          |                                    | 1            |
| Research Center for Buried Cultural Properties                     |            | 1                    |                       | 1                    |                    |                            | 2          |                                    | 2            |
| Health Care Center   | 1          | 1                    |                       | 1                    |                    |                            | 3          | 3                                  | 6            |
| University Hospital  | 4          | 8                    | 32                    | 63                   |                    |                            | 107        | 1,096                              | 1,203        |
| Administration Bureau  |            |                      |                       |                      |                    |                            | 0          | 427                                | 427          |
| <b>Total</b>   | <b>298</b> | <b>292</b>           | <b>61</b>             | <b>220</b>           | <b>2</b>           | <b>84</b>                  | <b>957</b> | <b>1,611</b>                       | <b>2,568</b> |

## STUDENT ENROLLMENT

(The 2018 School Year)

### ■ Undergraduate Students ■

| Faculty and School | Number       |              |
|--------------------|--------------|--------------|
| Letters            | 776          | 542          |
| Education          | 1,160        | 647          |
| Law                | 916          | 437          |
| Science            | 810          | 207          |
| Medicine           | 1,341        | 706          |
| Pharmacy           | 493          | 244          |
| Engineering        | 2,348        | 417          |
| <b>Total</b>       | <b>7,844</b> | <b>3,200</b> |

### ■ Diploma Course ■

| Faculty and School                        | Number |    |
|---|--------|----|
| Diploma Course in Special Needs Education | 17     | 10 |

### ■ Special Course ■

| Faculty and School    | Number |    |
|-----------------------|--------|----|
| Yogo Teacher Training | 41     | 41 |

\*Colored figures indicate the number of females included in the figures.

### ■ Graduate Students ■

| Faculty and School           | Master           | Master of Ed. | Doctor         | Juris Doctor |
|------------------------------|------------------|---------------|----------------|--------------|
| Education                    | 66 35            | 28 9          | —              | —            |
| Social and Cultural Sciences | 162 92           | —             | 72 32          | —            |
| Science and Technology       | 905 131          | —             | 187 43         | —            |
| Medical Sciences             | 29 17            | —             | 351 104        | —            |
| Health Sciences              | 52 24            | —             | 40 21          | —            |
| Pharmaceutical Sciences      | 62 21            | —             | 75 29          | —            |
| School of Law                |                  | —             |                | 4 —          |
| <b>Total</b>                 | <b>1,276 320</b> | <b>28 9</b>   | <b>725 229</b> | <b>4 0</b>   |

### ■ Attached Schools ■

| Classification         | Number       |            |
|------------------------|--------------|------------|
| Elementary School      | 648          | 324        |
| Junior High School     | 479          | 240        |
| Special Support School | 61           | 21         |
| Kindergarten           | 132          | 60         |
| <b>Total</b>           | <b>1,320</b> | <b>645</b> |

## STUDENT FINANCIAL AID

### ■ Japanese Students ■

(As of March 1, 2018)

| Classification         |                     | Number of Students | Japanese Government Scholarship | Other Scholarships | Total        |
|------------------------|---------------------|--------------------|---------------------------------|--------------------|--------------|
| Undergraduate Students |                     | 7,873              | 4,039                           | 121                | 4,160        |
| Graduate Students      | Master              | 1,268              | 600                             | 9                  | 609          |
|                        | Doctor              | 732                | 71                              | 0                  | 71           |
|                        | Juris Doctor        | 12                 | 10                              | 0                  | 10           |
|                        | Master of Education | 13                 | 3                               | 0                  | 3            |
| <b>Total</b>           |                     | <b>9,898</b>       | <b>4,723</b>                    | <b>130</b>         | <b>4,853</b> |

### ■ International Students ■

(As of May 1, 2018)

| Classification             |  | Number of Students | Japanese Government Scholarship | Other Scholarships | Total      |
|----------------------------|--|--------------------|---------------------------------|--------------------|------------|
| Undergraduate Students     |  | 186                | 8                               | 30                 | 38         |
| Graduate Students          |  | 334                | 69                              | 116                | 185        |
| Japanese Language Trainees |  | 2                  | 2                               | 0                  | 2          |
| <b>Total</b>               |  | <b>522</b>         | <b>79</b>                       | <b>146</b>         | <b>225</b> |

## STUDENT ADMISSION

(The 2018 School Year)

### ■ Undergraduate Students ■

| Faculty and School | Applicants   | Newly Enrolled Students |
|--------------------|--------------|-------------------------|
| Letters            | 643          | 180                     |
| Education          | 624          | 249                     |
| Law                | 662          | 221                     |
| Science            | 686          | 203                     |
| Medicine           | 410          | 115                     |
| Health Sciences    | 383          | 147                     |
| Pharmacy           | 401          | 90                      |
| Engineering        | 1,211        | 533                     |
| <b>Total</b>       | <b>5,020</b> | <b>1,738</b>            |

### ■ Graduate Students ■

| Faculty and School           |               | Applicants | Newly Enrolled Students |
|------------------------------|---------------|------------|-------------------------|
| Education                    | Master        | 32         | 29                      |
|                              | Master of Ed. | 19         | 15                      |
| Social and Cultural Sciences | Master        | 69         | 48                      |
|                              | Doctor        | 14         | 10                      |
| Science and Technology       | Master        | 537        | 454                     |
|                              | Doctor        | 25         | 25                      |
| Medical Sciences             | Master        | 20         | 17                      |
|                              | Doctor        | 72         | 68                      |
| Health Sciences              | Master        | 23         | 21                      |
|                              | Doctor        | 7          | 6                       |
| Pharmaceutical Sciences      | Master        | 35         | 29                      |
|                              | Doctor        | 16         | 15                      |
| <b>Total</b>                 |               | <b>869</b> | <b>737</b>              |

### ■ Diploma Course ■

|   | Applicants | Newly Enrolled Students |
|---|------------|-------------------------|
| Diploma Course in Special Needs Education | 20         | 17                      |

### ■ Special Course ■

|                                      | Applicants | Newly Enrolled Students |
|--------------------------------------|------------|-------------------------|
| Yogo Teacher Training Special Course | 72         | 41                      |

## STUDENT TUITIONS AND FEES

(As of April 1, 2018 / Unit: yen)

|                                   | Entrance exam fee | Admission fee | Tuition fees   |
|-----------------------------------|-------------------|---------------|----------------|
| Undergraduate Students            | 17,000            | 282,000       | 535,800/ year  |
| Graduate Students                 | 30,000            | 282,000       | 535,800/ year  |
| Graduate Students (School of Law) | 30,000            | 282,000       | 804,000/ year  |
| Research Students                 | 9,800             | 84,600        | 29,700/ month  |
| Auditing students*                | 9,800             | 28,200        | 14,800/ credit |

\* Includes non-degree course students

## DEGREES AWARDED

(As of March 31, 2018)

### ■ Master's Degree ■

| Classification                             | New System    |               |
|--|---------------|---------------|
|  | 2017.4-2018.3 | Total         |
| Master of Arts                             | 19            | 1062          |
| Master of Education                        | 43            | 1,222         |
| Master of Law                              | 4             | 468           |
| Master of Public Policy                    | 2             | 94            |
| Master of Medical Sciences                 | 13            | 307           |
| Master of Health Sciences                  | 14            | 103           |
| Master of Nursing                          | 4             | 68            |
| Master of Pharmaceutical Sciences          | 30            | 1,787         |
| Master of Clinical Pharmacy                | —             | 76            |
| Master of Health Life Sciences             | 1             | 24            |
| Master of Science                          | 89            | 2,430         |
| Master of Engineering                      | 351           | 9,607         |
| Master of Philosophy                       | 7             | 114           |
| Master of Science in Instructional Systems | 8             | 126           |
| <b>Total</b>                               | <b>585</b>    | <b>17,488</b> |

### ■ Doctoral Degree ■

| Classification                    | Old System   | New System        |              |                   |              |
|-----------------------------------|--------------|-------------------|--------------|-------------------|--------------|
|                                   |              | Course Completion |              | Thesis Submission |              |
|                                   |              | 2017.4-2018.3     | Total        | 2017.4-2018.3     | Total        |
| Doctor of Literature              | —            | 4                 | 74           | 1                 | 20           |
| Doctor of Public Policy           | —            | —                 | 22           | 1                 | 4            |
| Doctor of Law                     | —            | —                 | 8            | —                 | —            |
| Doctor of Science                 | —            | 11                | 218          | —                 | 30           |
| Doctor of Engineering             | —            | 13                | 678          | —                 | 110          |
| Doctor of Philosophy              | —            | 23                | 360          | —                 | 20           |
| Doctor of Medical Sciences        | 1,663        | 62                | 2,182        | 7                 | 1,006        |
| Doctor of Health Sciences         | —            | 5                 | 12           | 1                 | 1            |
| Doctor of Nursing                 | —            | 1                 | 3            | —                 | —            |
| Doctor of Pharmaceutical Sciences | —            | 12                | 310          | 3                 | 163          |
| Doctor of Clinical Pharmacy       | —            | —                 | 7            | —                 | —            |
| Doctor of Health Life Sciences    | —            | —                 | 2            | —                 | —            |
| Doctor of Life Sciences           | —            | —                 | 24           | —                 | 5            |
| Juris Doctor                      | —            | 9                 | 185          | —                 | —            |
| <b>Total</b>                      | <b>1,663</b> | <b>140</b>        | <b>4,085</b> | <b>13</b>         | <b>1,359</b> |

## AFTER GRADUATION

(As of May 1, 2018)

### ■ Undergraduate Students ■

| Faculty and School | Number of Graduates | Number of Continuing Higher Education | Number of Employed | Others     |
|--------------------|---------------------|---------------------------------------|--------------------|------------|
| Letters            | 175                 | 7                                     | 145                | 23         |
| Education          | 296                 | 29                                    | 235                | 32         |
| Law                | 197                 | 6                                     | 168                | 23         |
| Science            | 178                 | 95                                    | 68                 | 15         |
| Medicine           | 243                 | 17                                    | 112                | 114        |
| Pharmacy           | 93                  | 37                                    | 43                 | 13         |
| Engineering        | 578                 | 357                                   | 204                | 17         |
| <b>Total</b>       | <b>1,760</b>        | <b>548</b>                            | <b>975</b>         | <b>237</b> |

### ■ Graduate Students ■

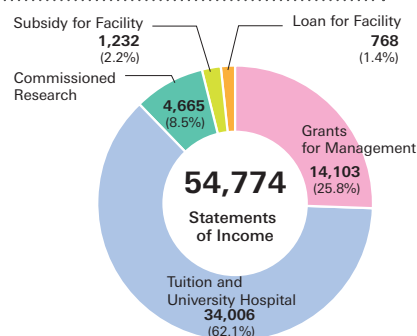
| Faculty and School           |              | Number of Graduates | Number of Continuing Higher Education | Number of Employed | Others    |
|------------------------------|--------------|---------------------|---------------------------------------|--------------------|-----------|
| Education                    | Master       | 43                  | 2                                     | 37                 | 4         |
| Social and Cultural Sciences | Master       | 39                  | 5                                     | 29                 | 5         |
|                              | Doctor       | 8                   | 0                                     | 7                  | 1         |
| Science and Technology       | Master       | 441                 | 18                                    | 400                | 23        |
|                              | Doctor       | 47                  | 0                                     | 33                 | 14        |
| Medical Sciences             | Master       | 13                  | 3                                     | 6                  | 4         |
|                              | Doctor       | 72                  | 1                                     | 56                 | 15        |
| Health Sciences              | Master       | 18                  | 0                                     | 15                 | 3         |
|                              | Doctor       | 6                   | 0                                     | 6                  | 0         |
| Pharmaceutical Sciences      | Master       | 31                  | 8                                     | 23                 | 0         |
|                              | Doctor       | 12                  | 0                                     | 7                  | 5         |
| Law                          | Juris Doctor | 9                   | 0                                     | 0                  | 9         |
| <b>Total</b>                 |              | <b>739</b>          | <b>37</b>                             | <b>619</b>         | <b>83</b> |

## BUDGET BREAKDOWN

### Statements of Income (FY2018)

Unit: million yen

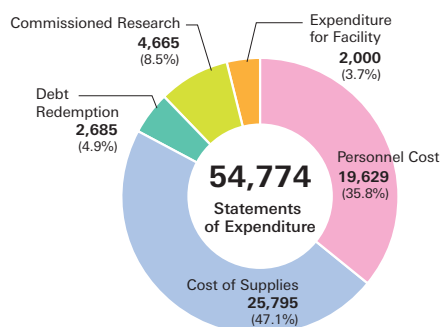
|                                 |               |
|---------------------------------|---------------|
| Grants for Management           | 14,103        |
| Tuition and University Hospital | 34,006        |
| Commissioned Research           | 4,665         |
| Subsidy for Facility            | 1,232         |
| Loan for Facility               | 768           |
| <b>Total</b>                    | <b>54,774</b> |



### Statements of Expenditure (FY2018)

Unit: million yen

|                          |               |
|--------------------------|---------------|
| Personnel Cost           | 19,629        |
| Cost of Supplies         | 25,795        |
| Debt Redemption          | 2,685         |
| Commissioned Research    | 4,665         |
| Expenditure for Facility | 2,000         |
| <b>Total</b>             | <b>54,774</b> |



### Funds from Other Sources (FY2017)

| Categories                               | Proposals Selected | Research Expense |
|--|--------------------|------------------|
| Grants-in-Aid for Scientific Research    | 682                | 1,791,685        |
| Grants & Endowment                       | 1,317              | 1,727,665        |
| Commissioned Research                    | 352                | 1,989,353        |
| Cooperative Research with Private Sector | 316                | 551,010          |
| <b>Total</b>                             | <b>2,667</b>       | <b>6,059,713</b> |

Unit: thousand yen

\*Includes Special Coordination Fund to Promote Science and Technology

\*Includes endowed courses

\*Excludes Kumamoto University Endowment

\*Excludes Grants-in-Aid for JSPS Research Fellows

### Grants-in-Aid for Scientific Research (FY2017)

| Categories  | Proposals Selected | *Research Expense |
|---|--------------------|-------------------|
| Grant-in-Aid for Scientific Research on Innovative Areas (Research in a proposed research area) | 22                 | 121,550           |
| Grant-in-Aid for Scientific Research (S)  | 3                  | 113,750           |
| Grant-in-Aid for Scientific Research (A)  | 14                 | 118,006           |
| Grant-in-Aid for Scientific Research (B)  | 98                 | 479,960           |
| Grant-in-Aid for Scientific Research (C)  | 324                | 474,953           |
| Grant-in-Aid for Challenging Exploratory Research   | 36                 | 52,390            |
| Grant-in-Aid for Challenging Research (Exploratory)   | 15                 | 46,800            |
| Grant-in-Aid for Young Scientists (A)   | 15                 | 66,560            |
| Grant-in-Aid for Young Scientists (B)   | 128                | 192,317           |
| Grant-in-Aid for Research Activity Start-up   | 16                 | 21,780            |
| Grant-in-Aid for Publication of Scientific Research Results                                     | 1                  | 600               |
| Fund for the Promotion of Joint International Research (Fostering Joint International Research) | 5                  | 54,600            |
| Grant-in-Aid for JSPS Fellows   | 41                 | 38,485            |
| <b>Total</b>  | <b>718</b>         | <b>1,781,751</b>  |

\* Includes overhead costs/ Unit: thousand yen

# KUROKAMI NORTH CAMPUS



## Kurokami North Campus

- ① Kurokami North N1  
(Faculty of Letters) (Faculty of Law)
- ② Kurokami North N2  
(Faculty of Letters) (Faculty of Law)
- ③ Kurokami North N3 (School of Law)
- ④ Kurokami North N4  
(Faculty of Letters) (Faculty of Law)
- ⑤ Kurokami North N5  
(Graduate School of Social and Cultural Sciences)
- ⑥ Kurokami North N6  
(Faculty of Letters) (Faculty of Law)
- ⑦ Kurokami North N7 (Faculty of Education)
- ⑧ Kurokami North N8 (Faculty of Education)
- ⑨ Kurokami North N9 (Faculty of Education)
- ⑩ Kurokami North N10 (Faculty of Education)
- ⑪ Kurokami North N11 (Faculty of Education)
- ⑫ University Archives

- ⑬ 'Ai Work' Job Café
- ⑭ Chimeido Hall
- ⑮ Kusunoki Hall
- ⑯ Kurokami North Facility and Administration Building
- ⑰ Kurokami North C1  
(Academic Commons Kurokami Bldg. 5)
- ⑱ The Memorial Museum of the Fifth High School ※
- ⑲ University Library
- ⑳ University Library (South Building)/  
The Open University of Japan Kumamoto Study Center
- ㉑ Health Care Center
- ㉒ North Student Hall Bldg. A  
(Cafeteria, Bookstore and Shops)
- ㉓ North Student Hall Bldg. B
- ㉔ Guard Station
- ㉕ The Front Gate (The Red Gate) ※
- ㉖ Kurokami North E1 (General Education Building)
- ㉗ Kurokami North E2  
(Academic Commons Kurokami Bldg. 6)
- ㉘ Kurokami North E3  
(Academic Commons Kurokami Bldg. 6)

- ㉙ The Chemical Laboratory of the Fifth High School ※
- ⑳ Environmental Safety Center
- ㉑ College of Cross-Cultural and Multidisciplinary Studies
- ㉒ Club Rooms 1
- ㉓ Kurokami Gymnasium
- ㉔ Club Rooms 2
- ㉕ Club Rooms 3
- ㉖ Athletic Field (Bufugen)
- ㉗ Swimming Pool

## Special Support School Attached to the Faculty of Education

- ㉘ Kurokami North E8 (Faculty of Education)
- ㉙ Kurokami North E9 (Special Support School Bldg. A)
- ㉚ Kurokami North E10 (Special Support School Bldg. B)
- ㉛ Kurokami North E11 (Special Support School Bldg. C)
- ㉜ Kurokami North E12 (Special Support School Gymnasium)
- ㉝ Kurokami North E13 ('Suzukake-no-ie' ADL Training House)
- ㉞ Swimming Pool
- ㉟ Athletic Field



Kurokami Campus (311, 478m<sup>2</sup>)

## KUROKAMI SOUTH CAMPUS



### Kurokami South Campus

- 46 Kurokami South W1 (Mathematics and Engineering)
- 47 Kurokami South W2 (Computer Science and Electrical Engineering)
- 48 Kurokami South W3 (Academic Commons Kurokami Bldg. 1)
- 49 Kurokami South W4 (Applied Chemistry and Biochemistry)
- 50 Kurokami South W5 (Engineering Research Laboratories)
- 51 Kurokami South W6 (Machine Shop A)
- 52 Kurokami South W7 (Machine Shop B)
- 53 Kurokami South W8 (Creative Engineering and Design Education Laboratory 1)
- 54 Kurokami South W9 (Creative Engineering and Design Education Laboratory 2)
- 55 100th Anniversary Hall
- 56 Kurokami South C1 (Academic Commons Kurokami Bldg. 7)
- 57 Kurokami South C2 (Architecture and Building Engineering) (Civil and Environmental Engineering)  
\*The new building is under construction.
- 58 Kurokami South C3 (Mechanical System Engineering) (Materials Science and Engineering)
- 59 Kurokami South C4 (Academic Commons Kurokami Bldg. 2)
- 60 Kurokami South C5 (Laboratory for Nanostructure Characterization)
- 61 Kurokami South C6 (Acoustic Laboratory)
- 62 Kurokami South C7 (Academic Commons Kurokami Bldg. 3)
- 63 Kurokami South C8 (Engineering Lecture Hall)
- 64 Kurokami South C9 (Center for Management of Information Technologies)
- 65 University Archives
- 66 University Hall (Administrative Offices)
- 67 Museum of the Engineering Faculty ※
- 68 Guard Station
- 69 Kurokami South E1 (Faculty of Science Bldg. 1&2)
- 70 Kurokami South E2 (Faculty of Science) (Graduate School of Science and Technology)
- 71 Kurokami South E3 (Faculty of Science Bldg. 3)
- 72 Kurokami South E4 (Faculty of Science Bldg. 4)
- 73 Kurokami South E5 (Research Building for Science and Technology)
- 74 Kurokami South E6 (Experimental Building for Science and Technology)
- 75 Kurokami South E7 (Acoustic Analysis Laboratory for Underwater Environments)
- 76 Kurokami South E8 (Low Temperature and He Gas Recovery Station)
- 77 South Student Hall
- 78 FORICO (Cafeteria and Convenience Store)
- 79 Kurokami South S1 (Hydraulic Laboratory)
- 80 Kurokami South S2 (Instrumental Analysis Center for Engineering Research)
- 81 Kurokami South S3 (Disaster Prevention Laboratory)
- 82 Kurokami South S4 (Kurokami Radioisotope Laboratory)
- 83 Kurokami South S5 (Research Center for Buried Cultural Properties)
- 84 Kurokami South S6 (Venture Laboratory) (Shock Wave and Condensed Matter Research Building)
- 85 Kurokami South S7 (Incubation Center)
- 86 Kurokami South S8 (Shock Wave Laboratory)
- 87 Kurokami South S9 (Engineering Experimental Laboratories)
- 88 Kurokami South S10 (MRC Casting Laboratory) (Magnesium Research Center(MRC))
- 89 Kurokami South S11 (MRC Forming and Machining Laboratory)
- 90 Kurokami South S12 (International Research Center for Advanced Science and Technology)
- 91 Kurokami South W11 Building A (Faculty of Engineering Temporary School Building)
- 92 Kurokami South W12 Building B (Faculty of Engineering Temporary School Building)
- 93 Kurokami South W13 Building C (Faculty of Engineering Temporary School Building)
- 94 Kurokami South W14 Building D (Faculty of Engineering Temporary School Building)

# HONJO NORTH, CENTRAL, SOUTH CAMPUS



## Honjo North Campus

- 1 West Tower
- 2 East Tower
- 3 Central Examination Building
- 4 Outpatient Building
- 5 Administration Building
- 6 Yamasaki Hall ■
- 7 Welfare Facilities
- 8 Facilities Management Building
- 9 Honjo North1 (Clinical Medicine Research Building)
- 10 Honjo North2 (Medical Education & Library Building)
- 11 Honjo North3 (General Medical Research Building)
- 12 Honjo North4 (Basic Research Building)
- 13 Honjo North5 (The Center for Medical Education and Research)
- 14 Old Clinical Research Building
- 15 Multistory Parking Garage 1
- 16 Multistory Parking Garage 2

## Honjo Central Campus

- 17 Honjo Central1 (Institute of Resource Development and Analysis (Center for Animal Resources and Development))
- 18 Honjo Central2 (Center for AIDS Research, Center for Animal Resources and Development)
- 19 Honjo Central3 (International Research Center for Medical Sciences (IRCMS))
- 20 Honjo Central4 (Lecture Building)
- 21 Honjo Central5 (Institute of Molecular Embryology and Genetics)
- 22 Honjo Central6 (Institute of Resource Development and Analysis (Gene Technology Center / Radioisotope Center))
- 23 Honjo Central7 (Academic Commons Honjo-1)
- 24 Club Room 1
- 25 Club Room 2
- 26 Club Room 3
- 27 Higo Iku Monument Hall

## Honjo South Campus

- 28 Student Union "Kaiju"
- 29 Gymnasium
- 30 Honjo South1 (School of Health Sciences Bldg. A, B, C)
- 31 Honjo South2 (Academic Commons Honjo-2)
- 32 Honjo South3 (School of Health Sciences Bldg. E)
- 33 Club Room
- 34 Kobato Nursery

# OE CAMPUS

## Oe Campus

- 1 Oe C1 (Main Building A, B, C)
- 2 Oe C2 (Main Building D)
- 3 Oe C3 (Main Building E (Library, Research Institute for Drug Discovery))

- 4 Oe C4 (Lecture Building)
- 5 Oe C5 (Center for Clinical Pharmaceutical Sciences)
- 6 Oe W1 (Animal House)
- 7 Oe W2 (Joint Research Building)
- 8 Oe W3 (Radioisotope Center)
- 9 Oe E1 (General Research Building)
- 10 Oe E2 (Instrumental Analysis Center)
- 11 Oe E3 (Medicinal Plant Garden Administration House)
- 12 Compost Depot
- 13 Banjikan Hall (Restaurant, Seminar Room, Liaison Office)
- 14 Oe Gymnasium
- 15 The Kumayaku Museum and Miyamoto Memorial Hall
- 16 School of Pharmacy Resource Center
- 17 Staff Residence
- 18 Athletic Field
- 19 Eco-Frontier Center of Medicinal Resources (Medicinal Plant Garden)



Honjo North, Central, South Campus (133, 312m<sup>2</sup>)



Oe Campus (51, 264m<sup>2</sup>)



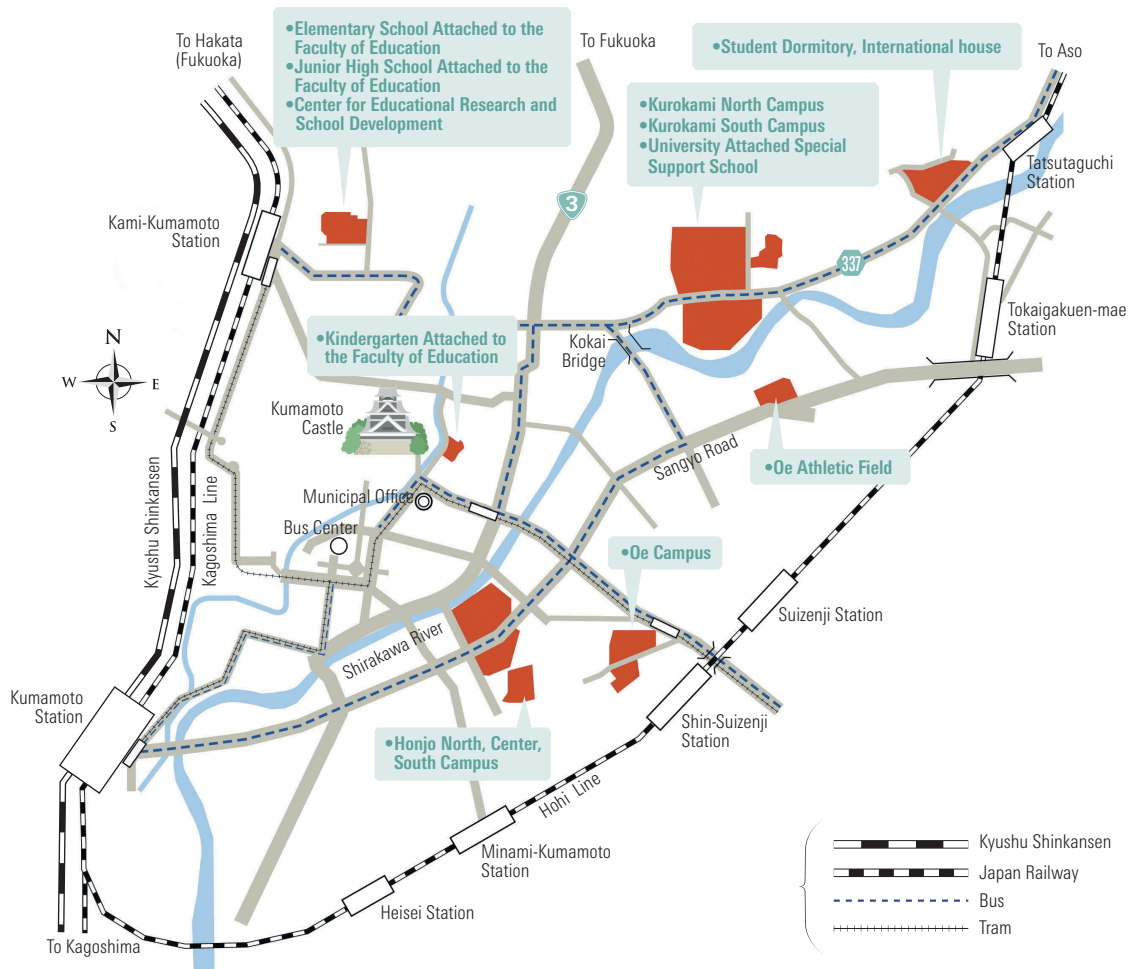
# LOCATION



## KYUSHU Island



## KUMAMOTO City



# HISTORY

**1756 Saishunkan established (Origin of School of Medicine and University Hospital)**

**1874 Kumamoto Teachers College established**

**1885 Kumamoto Pharmaceutical College established**

**1887 The Fifth High School established**

**1896 Kumamoto Medical College established**

**1897 Kumamoto Technical College established**

There were five institutions of higher education in Kumamoto during the Meiji Era which eventually united to form Kumamoto University. Among these institutions was The Fifth High School, which was a center for higher learning in western Japan, and provided students with preparatory education to enter the Japanese Imperial Universities. A number of foreign teachers joined the school to offer western culture and knowledge to the students.

These young men, aged from their teens to late twenties, resided in a dormitory, and built a tradition of student community as well as lasting friendships.

**1949 Kumamoto University established**

Kumamoto University was established under the National School Establishment Law that reformed the preceding Japanese educational system. The new university incorporated the older institutions described above.

At its establishment, The Fifth High School comprised six departments, with an enrollment of approximately 1,100 students.

Discussion of the school's curriculum began soon after the founding of the school. After the Graduate School of Medicine was established in 1955, other graduate schools were subsequently established within the university.

The establishment of research and education institutions within the university was started early on. In the 1950s, both Kumamoto University Hospital and the University Library were completed. In addition, a number of research centers that conduct the highest level of scholarly research have been consecutively established over the past 20 years.

**2004 Kumamoto University enters the 21st Century**

The acceptance of government-sponsored international exchange students started around 1960, but records indicate that several international exchange students studied in the Faculty of Medicine as early as the 1950s. Since the 1960s, though, the number of international students has been steadily increasing. There were approximately 50 international students at the university in 1984, and that number increased to over 300 twenty years later in 2004.

Since Kumamoto University became a National University Corporation in 2004, the university has been ushering in an era of change. Nevertheless, the university will still continue to strive for further advancements in education, research, and medical care based on the knowledge and experience it has gained since it was first established, in order to contribute to society in the 21st century.



## HISTORY OF THE UNIVERSITY HOSPITAL

The history of Kumamoto University Hospital goes back to the opening of the Hosokawa Clan Hospital in 1870. After being reorganized and relocated several times, the hospital was moved to its current location in 1901.

In 1949, after Kumamoto Medical College was absorbed into Kumamoto University, the name of the hospital was changed to Kumamoto University Hospital. It started with a system of eleven medical departments.

In the past several decades, in order to respond to the segmentation and advancement of medical services, the hospital established central consultation facilities as well as new medical departments with the aim of increasing efficiency, among other improvements.

Kumamoto University Hospital has grown to become a general hospital with technologically advanced medical facilities and a comprehensive medical system. It is still continuing to make advancements in its aim to become a university hospital that can continue to provide quality medical care in the 21st century.



## HISTORICAL FIGURES



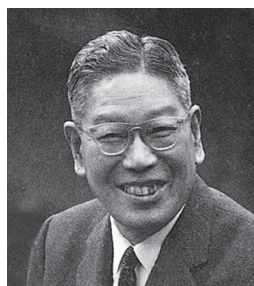
**Lafcadio Hearn**  
(1850-1904)

Though he was of Irish extraction, he was born in Greece. He came to Japan in 1890. In 1891, he took up his new post at The Fifth High School. His work "Ghost Stories" ("*Kaidan*") introduces Japan's mysterious traditions in English, and is widely known.



**Natsume, Soseki**  
(1867-1916)

In 1896, he came to Kumamoto to take up his new post as a lecturer at The Fifth High School. He was residing in Kumamoto during the time he went on the trip that appears in his famous novel "*Kusamakura*".



**Ikeda, Hayato**  
(1899-1965)

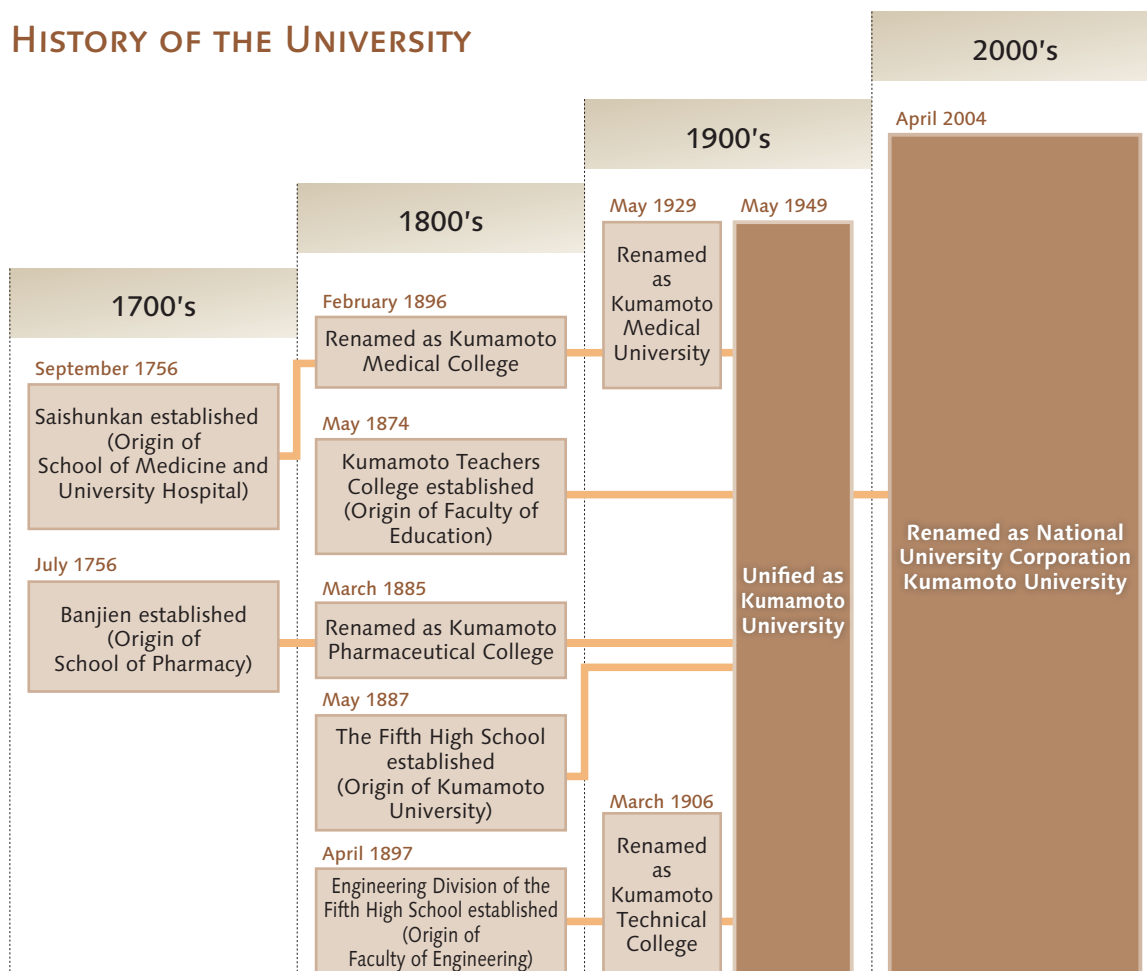
Hayato Ikeda was a politician who was born in Hiroshima prefecture and studied at The Fifth High School. He became the Prime Minister of Japan in 1960, and his administration led Japan for a prolonged time during its era of high economic growth.



**Sato, Eisaku**  
(1901-1975)

Eisaku Sato was a politician who was born in Yamaguchi prefecture and studied at The Fifth High School. He became the Prime Minister of Japan in 1964, and played a key role in the return of Okinawa to Japanese rule and the creation of Japan's "Three Non-Nuclear Principles." He received the Nobel Peace Prize in 1974.

## HISTORY OF THE UNIVERSITY



## KUMAMOTO UNIVERSITY MUSEUMS

The main building of the former Fifth High School, now the Memorial Museum, is the symbol of Kumamoto University. The building has been designated as a National Cultural Property, along with the Chemical Laboratory, the main gate, and the Museum of the Engineering Faculty. We also preserve the tangible cultural properties of the Yamazaki Memorial Hall on the Honjo campus and the Kumayaku Museum on the Oe campus. We are planning to create the "Kumamoto University Museum," which will consist of these buildings and artifacts. As the first step in this process, the university initiated the renewal of the Memorial Museum of the Fifth High School in 2006, and is now gathering historical documents and materials.

### 五高記念館



<http://www.goko.kumamoto-u.ac.jp/en/>

※ It is currently closed because of Kumamoto earthquake in 2016.

### The Memorial Museum of the Fifth High School (National Cultural Property)

The Fifth High school was established for young boys as the most prominent educational institution in Kyushu in 1887. Jigoro Kano, Yakumo Koizumi (Lafcadio Hearn) as well as Soseki Natsume were among the more celebrated professors who taught here. Even after 120 years, the original Fifth High School building is still well-maintained and very much appreciated by the public.

|             |   |
|-------------|---|
| Hours       | 10:00 – 16:00 (Entrance allowed up to 15:30)  |
| Days Closed | Every Tuesday, August Obon holidays<br>Year-end and New Year's holidays<br>National holidays between December and February only |
| Admission   | Free  |

### 正門(赤門)



### The Front Gate (The Red Gate) (National Cultural Property)

The front gate of the Fifth High School is popularly known as the Red Gate (AKAMON) and is still the dignified main gate of the north campus of Kumamoto University.

### 化学実験場



### The Chemical Laboratory of the Fifth High School (National Cultural Property)

This building was used as the lab for chemical experiments. There is a row of labs as well as a tiered lecture hall with a corridor situated on the west side.

※ It is currently closed because of Kumamoto earthquake in 2016.

### 工学部研究資料館



### Museum of the Engineering Faculty (National Cultural Property)

This building was constructed in 1908 as a machine shop for students of the former Kumamoto Junior College of Technology. The exhibits include various machines and tools still in working condition. The public is welcome to visit the museum during Open Campus Days, the University Festival and of course the following Days.

|             |   |
|-------------|---|
| Days Opened | The third Friday of the month (13:00–16:00) |
| Admission   | Free  |

※ It is currently closed because of Kumamoto earthquake in 2016.



## The Kumamoto Area

Kumamoto University is located in the city of Kumamoto in Kyushu, the southern-most main island of Japan. Kumamoto City is the third biggest city in Kyushu. It has a population of approximately 740,000, which is equivalent to about 41% of the total population of the prefecture. By air it takes 90 minutes from Tokyo and 60 minutes from Osaka; by Kyushu Shinkansen it takes 40 minutes from Fukuoka City.

The weather is generally mild, though there is a rainy season from early June to mid-July, followed by a sub-tropically hot summer season. Autumn and spring offer the most comfortable weather. Warm clothing is necessary in January and February. It seldom snows even in midwinter, and never more than a few centimeters.

Known for its abundance of trees and greenery, Kumamoto is one of Japan's oldest cities. While offering the latest in modern facilities, Kumamoto has managed to retain a purity and simplicity of old Japanese customs, flavor, and spirit which make it an interesting place to visit and a delightful place to live.

Local attractions include Kumamoto Castle, one of the oldest and grandest medieval castles in Japan; Kumamoto downtown area, located 10-15 minutes away from Kumamoto University by bicycle and known for a lot of office building and shopping streets; the Amakusa Islands, a chain of 120 islands known for their exciting

Christian history and plenty of rich nature; and Aso National Park, crowned by the active volcano Mt. Aso, with the largest caldera volcano in the world. Because of its proximity to Mt. Aso, the Kumamoto area also has an abundance of natural hot springs. Kumamoto is also well-known in Japan for its delicious drinking water. Because the rainfall that soaks into the ground in the mountains of the Aso region takes many years to come out, one can always be able to drink delicious water.



創造  
 する森  
 挑戦  
 する炎



“Forest of Creative Powers, Blaze of Challenging Spirits”

Kumamoto University (KU), a globally active research university with roots in local communities, has adopted a motto that symbolizes the university's brand attributes and expresses its essential quality: "KU Spirit."

Calligraphy by Mr. Takehiko Inoue, a manga artist known for SLAM DUNK, Vagabond and many more. He is a former student of the Faculty of Letters of Kumamoto University.

**Kumamoto University**  
 2-39-1 Kurokami, Chuo-ku, Kumamoto 860-8555 JAPAN  
 TEL : 81-96-342-2109  
 FAX : 81-96-342-2159  
<http://ewww.kumamoto-u.ac.jp/>