



# Kumamoto University

Short-Term  
Exchange Program  
2017

創造 拓 森 挑 戰 超 炎

 Kumamoto University

College of Cross-Cultural and Multidisciplinary Studies





# Contents

## 1 About Kumamoto University Short-Term Exchange Program

熊本大学短期留学制度について

## 2 Application Procedure for Kumamoto University Short-Term Exchange Program

熊本大学短期留学プログラム出願手続きについて

## 3 Class Subjects

授業科目

## 10 Campus Life

キャンパスライフ

## 17 Life in Kumamoto

熊本での生活



# About Kumamoto University Short-Term Exchange Program

## 熊本大学短期留学制度について

### Purpose

Kumamoto University Short-Term Exchange Program is designed for students who are enrolled full-time at partner universities abroad and have foreign citizenship. The program offers undergraduate foreign students, who are interested in the Japanese language, Japanese and Asian society and culture, advanced science and technology, and interactions with foreign students, the chance to study for up to a year in Japan while still retaining their full-time status at their home universities. The university also hopes that the program will promote exchange between university students from foreign countries and Japanese university students.

### Available Courses

#### E Course (Program in English)

As a general rule, this course is intended for third year undergraduate students from universities that have a student exchange agreement with Kumamoto University. Students in this course mainly take Short-Term Exchange Program classes taught in English. Also, they can take Japanese language and Japanese Studies classes. Students in this course can take specialized subjects for undergraduate students of each faculty and general education classes which are not included in program completion requirements as well (note: basically specialized subjects and general education classes are taught in Japanese).

#### J Course (Program in Japanese)

This course is intended for students from universities that have a student exchange agreement with Kumamoto University. Students in this course mainly take classes in specialized subjects for undergraduate students of each faculty, as well as classes in the Japanese language and Japanese Studies. Also, they can take general education classes and Short-Term Exchange Program classes taught in English.

### Period of Acceptance

Students are accepted for a term of a half or one year that starts in either October or April of any given calendar year.

### Applicant Qualifications

#### E Course (Program in English)

1. As a general rule, applicants should currently be full-time thirdyear undergraduate students at universities that have a student exchange agreement with Kumamoto University, and must have foreign citizenship.
2. Having English ability equivalent to a TOEFL iBT score of 61 or more.
3. Applicants should be physically and mentally capable of completing their studies.

#### J Course (Program in Japanese)

1. Applicants should currently be full-time undergraduate students at universities that have a student exchange agreement with Kumamoto University, and must have foreign citizenship.
2. Having Japanese Ability equivalent to JLPT N3 or more.
3. Applicants should be physically and mentally capable of completing their studies.

### Certification of Credits

Credits for classes which the students complete will be approved as the credits of Kumamoto University, and academic transcripts will be issued to the students.

### Tuition

Admission, examination fees and tuition payments to Kumamoto University will be waived as long as the number of students does not exceed the maximum number allowed by university or department level student exchange agreements.

### ■目的

熊本大学短期留学制度は、本学と学生交流協定を締結している外国の大学の正規課程に在籍する外国籍の学部学生を対象とした制度で、日本語習得、日本及びアジアの社会文化、先端の科学技術、諸外国の学生との交流等に関心を持つ学部レベルの外国人学生に、母校に在籍のまま1年間を最長とする短期留学の機会を提供しています。また、諸外国の学生や日本人学生との交流を育むことを目的としています。

### ■コース

#### Eコース (英語によるプログラム)

原則として学生交流協定校からの学部3年次の学生を対象にしたコースです。主に、英語による短期留学プログラム科目を受講します。また、日本語・日本事情科目も受講できます。各学部開講専門科目や教養教育科目も受講できますが、修了要件には含まれません。(注: 専門科目及び教養教育科目は基本的に日本語で行われます)。

#### Jコース (日本語によるプログラム)

学生交流協定校からの学生を対象にしたコースです。主に、各学部開講専門科目及び日本語・日本事情科目を受講します。また、教養教育科目及び英語による短期留学プログラム科目も受講できます。

### ■受入期間

10月または4月から半年または1年間とします。

### ■出願資格

#### Eコース (英語によるプログラム)

1. 本学と学生交流協定を締結している外国の大学の正規課程に在籍し、原則として学部3年次の外国籍の学生であること。
2. TOEFL iBT 61点相当以上の英語能力を有していること。
3. 心身ともに学業に支障がないこと。

#### Jコース (日本語によるプログラム)

1. 本学と学生交流協定を締結している外国の大学の正規課程に在籍する外国籍の学部学生であること。
2. 日本語能力試験N3相当以上の日本語能力を有していること。
3. 心身ともに学業に支障がないこと。

### ■単位の認定

取得した単位については、熊本大学の単位として認定し成績証明書を発行します。

### ■授業料

大学間あるいは部局間学生交流協定校の学生で、本学との学生交流で定められた人数枠内の学生については、入学金、検定料、授業料は不徴収となります。

# Application Procedure for Kumamoto University

## Short-Term Exchange Program 熊本大学短期留学プログラム出願手続きについて

### Required Documents

- ① Application for Kumamoto University Short-Term Exchange Program
- ② Application for Certificate of Eligibility
- ③ Application for Applying to Rent a Room at the International House
- ④ Certificate of Enrollment (Issued by home university)
- ⑤ Academic record (Official home university transcript)
- ⑥ Letter of Recommendation
- ⑦ Health Certificate
- ⑧ Certificate of Financial Support (certificate of bank account balance, certificate of income, etc.)
- ⑨ Four photographs (40mm x 30mm)
- ⑩ Copy of first page of applicant's passport
- ⑪ Required Documents related to Language Proficiency.  
E Course applicants: TOEFL score for non native English speakers or Certificate of English Ability equivalent to TOEFL iBT score of 61 or more to be issued by the home university.  
J Course applicants: Japanese-Language Proficiency Test Certificate of Result and Scores of level N3 or more, Certificate of Japanese Ability equivalent to N3 or more to be issued by the home university

\*Students should acquire above applications ①,②,③ from the home university.

### Deadline for Submission of Applications

- For attendance starting in October 2017: April 28, 2017
- For attendance starting in April 2018: November 30, 2017

### Where to submit all required forms and documents

(Be sure to send the above documents to the following address through the person in charge of the overseas study programs at the applicant's host university; otherwise, the application will not be accepted.)

Kumamoto University International Student Office  
2-40-1 Kurokami, Chuo-ku, Kumamoto-city 860-8555 Japan  
TEL +81-96-342-2103/2133  
FAX +81-96-342-2130  
E-mail [gji-ryugaku@jim.u.kumamoto-u.ac.jp](mailto:gji-ryugaku@jim.u.kumamoto-u.ac.jp)

### Screening Schedule

#### For those who plan to come in October 2017

February to April, 2017	Submission of application materials
May to June	Screening of applicants
August	Successful applicants will be sent a Letter of Acceptance and enrollment materials
End of September	Successful applicants come to Kumamoto Orientation
	Start of the fall term

#### For those who plan to come in April 2018

October to November, 2017	Submission of application materials
November to December	Screening of applicants
February 2018	Successful applicants will be sent a Letter of Acceptance and enrollment materials
Early April	Successful applicants come to Kumamoto Orientation
	Start of the spring term

### ■出願書類

- ①熊本大学短期留学プログラム申請書
  - ②在留資格認定証明書交付申請書
  - ③熊本大学国際交流会館入居許可申請書
  - ④在学証明書
  - ⑤成績証明書
  - ⑥推薦状
  - ⑦健康診断書
  - ⑧経済支弁証明書類
  - ⑨写真4枚(40mm×30mm)
  - ⑩パスポートの写し
  - ⑪語学力を証明する書類  
Eコース選択希望者:TOEFLのスコア(英語を母国語としない者)または所属大学によりTOEFL iBT61点相当以上の英語能力を証明する文書  
Jコース選択希望者:日本語能力試験の成績通知書の写し、または所属大学によりN3相当以上の日本語能力を証明する文書
- ※上記①②③は、所属大学より入手してください。

### ■出願期間

- ・2017年10月渡日の場合、2017年4月28日までに出願
- ・2018年4月渡日の場合、2017年11月30日までに出願

### ■出願書類提出先

〒860-8555  
熊本市中央区黒髪2丁目40番1号  
熊本大学学生支援部  
国際教育課  
TEL : 81-96-342-2103/2133  
FAX : 81-96-342-2130  
E-mail : [gji-ryugaku@jim.u.kumamoto-u.ac.jp](mailto:gji-ryugaku@jim.u.kumamoto-u.ac.jp)

### ■選考スケジュール

#### 2017年10月渡日の場合

2017年2月~4月	出願書類受付
5月~6月	選考
8月	受入許可書および入学手続書類の送付
9月下旬	渡日 留学生オリエンテーション 秋学期授業開始

#### 2018年4月渡日の場合

2017年10月~11月	出願書類受付
11月~12月	選考
2018年2月	受入許可書および入学手続書類の送付
4月初旬	渡日 留学生オリエンテーション 春学期授業開始



#### ■ Semester System (15 times in total) Classes セメスター制(全15回)科目

The list below is for the year 2016. Classes in 2017 are subject to addition/change.

2016 年度の実績です。2017 年度の開講科目は追加・変更になる場合があります。

Subjects	Details	Credit	Term
Contemporary Ethical Thoughts	This course aims at considering what the contemporary ethical thoughts and norms can be in the 21st century. Every student is required to be in charge of a presenter, reporting your opinions on topics proposed by Tachibana, from your own cultural backgrounds.	2	Spring
Digital Signal Processing II	Students will be able to understand the functions and characteristics of digital filters. Basic knowledge of the signal processing is necessary to understand this class.	2	Spring
Judo	The skill on judo is acquired 1. Ukemi 2. Basic movements 3. Uchikomi 4. Randori 5. Kata	1	Spring
Transportation System Analysis	Aims of this class are as follows: 1. to learn the standard aggregated stepwise travel demand forecasting method and specify these models by using actual dataset. 2. to understand the latest methods on discrete choice and cost/benefit analysis. 3. to learn some mathematical methods and techniques such as most likelihood estimation, nonlinear optimization and numerical calculation.	2	Spring
Lubricated System in Mechanical Engineering	Objectives: 1. Understanding of the lubrication mechanisms in engineering products. 2. Ability of explaining their lubrication mechanisms theoretically. 3. Figuring out of tribological problem in each machine systems.	2	Spring
Fundamentals of Chemical Engineering	This subject introduces basic principles in material and energy balances associated with chemical engineering unit operations and processes.	2	Spring
Nano-Material Science for Medicine	First, physical properties of various nanomaterials used for medicine will be introduced. Then, structure and functions of the nanoparticles for drug delivery system, hyperthermia, and bioimaging will be introduced.	2	Spring
Advanced Materials for Engineering	The technological innovation in the world is supported by the development of new materials and the advance in materials processing. In this class, each teaching member of the department of materials science and engineering gives a lecture on the advanced materials or processes that he/she develops in the laboratory. The lectures cover a wide variety of subjects ranging from materials synthesis, physical and metallurgical properties to recycling processes.	2	Spring
Mechanics of Biomaterial	Metals for medical implants, ceramics, polymers, mechanics of biomaterials: elasticity, viscoelasticity, failure theories, fracture mechanics, fatigue, friction, lubrication and wear, regulatory affairs and testing, orthopedics, and cardiovascular devices, oral and maxillofacial devices, and soft tissue replacements.	2	Fall
Introductory Calculus II	In this course, international students exercise the basic mathematics which are used in engineering, in particular "Calculus", "Linear Algebra" and "Differential Equation", to understand them and study the advance subjects.	2	Fall
Fundamental Study on Thermal Fluid Flow and Introduction of Advanced Renewable Energy Researches	1. Introduction of Greenhouse Effect. 2. Introduction of renewable energy and its plants in Kyushu Island. 3. Introduction of heat transfer. 4. Formulation of basic equations pertinent to heat transfer. 5. Fundamental Study of Heat conduction 6. Fundamental study of Heat convection. 7. Research Topics:	2	Fall
Cross-cultural Understanding I	In this class, the focus will be on developing cultural understanding and an appreciation of other cultures as well as one's own. We will explore both verbal and non-verbal communication and diversity of values.	2	Fall
The Rule of Law and Its Practice in Asia	"Rule of law" is one of often used but difficult defined concepts in popular press and daily conversations today. This course will look at the core meanings and framework of the "Rule of Law" from several angles, particularly at academic definition with regard to formalist or substantive concepts; at the United Nations' proposal at the national and international levels; and at some criterions by Worldwide Governance Indicators for measuring the extent to which agents have confidence in and abide by the rules of society, and a worldwide ranking of the rule of law. The course also will provide an overview from comparative perspective to describe the implementation of the rule of law in East and Southeast Asia region with different form, direction and developing stage respectively, as well as how the rule of law developed by the constitutionalism and the structure of the legal system in those countries.	2	Fall

Subjects	Details	Credit	Term
Special Needs Education	The course is designed to offer students to understand special needs education. Special needs education is one of new trends in education in the world. Special needs education focuses on each student's special needs, such as disabilities. The focus of the course will be to encourage students to understand issues related to children with special needs. The students will be required to conduct a short presentation on education and special needs education in their countries.	1	Fall
Minamata Convention on Mercury: What is it for?	This course will begin with a consideration of overall structure of the Japanese society. The nature of the so-called "Okami Ishiki," people in Japan's tradition of reliance on government, will be critically assessed. As a specific subject, we would consider issues involving the environmental disaster of Minamata disease, a methylmercury poisoning, which is dating from Japan's period of rapid economic growth. Minamata Convention on Mercury was named after this incident.	2	Fall
The Japanese People's Health	This course aims at getting some basic information about the people who have supported Japanese people's health and understanding the importance of their works.	2	Fall
Advanced Geoenvironmental Engineering	The objectives of this study are as follows: 1. To understand the mass transport of contaminant in the ground mathematically; 2. To be able to discuss the results of numerical simulation; 3. To understand the advantage and disadvantage of remediation techniques; 4. To understand the concept of landfill design	2	Fall
Basic Japanese I-1	Elementary Comprehensive Japanese A 1. This course is appropriate for those who have never studied Japanese before and wish to build a solid foundation of basic Japanese. 2. This course helps students to communicate in simple Japanese in their daily lives. 3. Students will learn to read and write simple sentences using hiragana and katakana.	1	Spring, Fall
Basic Japanese I-2		1	
Basic Japanese I-3		1	
Basic Japanese I-4		1	
Basic Japanese I-5		1	
Basic Japanese I-6		1	
Basic Japanese I-7		1	
Basic Japanese I-8		1	
Basic Japanese I-9		1	
Basic Japanese I-10		1	
Basic Japanese I-11	Elementary Total Japanese S The objectives of these classes are: (1) to have fundamentals of modern Japanese including sentence structure, grammar and vocabulary with emphasis on two basic skills, speaking and listening comprehension. (2) to acquire basic communicative skills in Japanese necessary for daily life and campus life. Reading and writing Hiragana, Katakana and kanji are not included in this course.	1	Spring, Fall
Basic Japanese I-12		1	
Basic Japanese II-1	Elementary Intensive Japanese B 1. This course is appropriate for those who have learned the first half of elementary Japanese and would like to gain a solid foundation of basic Japanese grammar. 2. This course helps students to communicate in Japanese in their daily lives.	1	Spring, Fall
Basic Japanese II-2		1	
Basic Japanese II-3		1	
Basic Japanese II-4		1	
Basic Japanese II-5		1	
Basic Japanese II-6	Elementary Japanese Conversation B(h) This course is for those who have studied the equivalent of one semester of Japanese and would like to gain a solid foundation of elementary Japanese. Students practice daily conversation and acquire listening comprehension skills at upper elementary level.	1	Spring, Fall
Basic Japanese II-7		1	
Basic Japanese II-8	Elementary <i>Kanji</i> and Vocabulary 1) To be able to read and write 500 kanji. 2) To learn about the basic structure of kanji and the proper way to write kanji.	1	Spring, Fall
Basic Japanese II-9		1	

※ Spring: April - August (4月 - 8月)      Fall: September - February (9月 - 2月)



## ■ Term System (8 times in total) Classes ターム制(全8回)科目

The list below is for the year 2016. Classes in 2017 are subject to addition/change.

2016年度の実績です。2017年度の開講科目は追加・変更になる場合があります。

Subjects	Details	Credit	Term
The Brothers Grimm – More than Fairy Tales!	As the title implies, the Brothers Grimm were more than storytellers of folk tales. They were also cultural researchers, linguists, lexicographers and founders of German studies. We will not only read fairy-tales, but also have a look at the Brother Grimm's wide-ranging activities on the background of the 19th century, an era of technical, economic, and social transformation. Let's also discuss about issues of literary science and the development of an "independent culture" in other countries including Japan.	1	Spring 1, Fall 2
Discovering the Middle Ages – East and West	One of the greatest benefits of studying history is that it allows us a chance to learn about who we and others came from. It is interesting to see how some of the thoughts, attitudes we know can differ so drastically from those throughout history. This course approaches the period around 1000 A.D., and we will try to compare European and Japanese civilization in the Middle Ages, taking up topics such as social hierarchies, religion, education, economy etc. I also would appreciate you to tell about your own country's history.	1	Spring 2, Fall 1
Aspects of Nation-Building in Meiji Japan - With a Historical View of the Fifth High School	After Japan has opened the country to the world, the political leaders of the Meiji era formulated far-reaching policies to transform and modernize Japanese society in an effort to catch up with the West. The second half of the 19th century was a period of learning and adapting, and it is quite obvious that foreign language became a crucial issue. Let's have a look at the influence of languages strategies on the curriculum of the Fifth High School and discuss the importance of language planning in modern nation-states.	1	Spring 2, Fall 1
The International Community and Japan	This course examines Japan's position and its relationship to the international community by shedding light on the various ways Japan is present and involved in international affairs. The topics covered in the course include: the Cool Japan initiative and cultural diplomacy, women, work, and marriage, Islam in Japan, Japanese immigration to the Americas, athletics, ethnic communities and diversity in Japan, and J-pop and Asia.	1	Spring 1, Fall 1
Japan's Challenges in Global Partnership	This course examines Japan's participation in global community and leadership role in various aspects of human activities including humanitarian action, international corporation partnership, student volunteer/study abroad programs, global entrepreneurship, and various types of global networking. In order to maximize the learning opportunity, enrolled students will have an option of traveling overseas and engage in project-based learning activities in a university setting. The ultimate goal of this course is to put theory into practice by engaging in reflective practice of critical analysis and evaluation on ways Japan participates in global partnership.	1	Spring 2, Fall 1
Japanese Immigration to the Americas	This course introduces the history of Japanese immigration to the Americas from the Meiji era (1868) through the mid Showa era (1950s). The course examines push and pull factors that caused Japanese immigration during these eras and the political background to the cause of it. This course also aims to encourage students to widen their views and cultivate their critical thinking by considering various factors behind transnational movements of people and the impact on the world today.	1	Fall 2
Cultural Diversity and Society	In this course, students will develop their awareness about the roles of race, ethnicity, class, gender, sexuality, disability, and other human differences in shaping one's identities, worldviews, and human experiences. This course also allows students to explore their own cultures, identities, and perspectives about other cultures. Awareness, in turn, will lead to the possibility of positive change in terms of ethics in cross-cultural communication/interactions in the future.	1	Spring 2, Fall 2
Academic Integrity and College Studies	This course helps students become familiar with expectations for academic studies at the college level. The course covers the following learning activities: effective public speaking, presentation skills, rules and conventions of academic writing, evaluating internet resources, introduction to Kumamoto University learning resources and support services, assessment of learning effectiveness, academic advisement, and socialization. Throughout the course, students will have an opportunity to develop and practice hands-on academic skills, work on group and individual projects, and assess their learning styles and study skills.	1	Spring 1
Introduction to Economics	The course will provide sound knowledge and ability to apply the key principle of economics into daily life. We will study fundamental concepts that economists use to study all the questions that result from fundamental economic problem. The topics will cover microeconomics and macroeconomics: that is the study of interactions of consumers and firms in the market as well as the wide economy, such as economic growth and unemployment.	1	Spring 1, Fall 1
Statistics	This course will provide introduction to statistics with application. Topics discussed include describing data, the normal distribution, regression, probability, statistical inference, confidence intervals, and hypothesis tests with applications in the real world.	1	Spring 2, Fall 2
Development Economics	This course is to introduce the economic problems and issues faced by developing countries. We will begin to explore the concept of development and go through the topics about economic growth, income inequality, poverty, population growth, education, and health. Then we will focus on specific countries to see how they can successfully transform becoming developed economies.	1	Spring 1, Fall 1
Women and Family in Japan	This course introduces the history of women and the transformation in family in Japan. We also examine the historical trends on selected topics related to women and family in Japan and discuss the factors behind the changes. The topics include marriage, fertility, divorce, division of labor in the households, labor market participation and education.	1	Spring 2, Fall 2
Comparative Religions and Spiritualities	This course introduces the basic tenets, beliefs, and structures of classic religions visible in Japan along with the unique Japanese Shinto and earlier shamanic practices. The focus will be to compare and view patterns and similarities as well as differences in spiritual practices and beliefs, including historical and social frameworks. The learning outcome is for students to gain an insight as to how these different practices, understandings, and beliefs have universal traits of value for the people of Japanese and foreign descent that live them and use them in their lives. Materials will be provided in readings and lectures. Classroom activity will include discussions, debates and presentations.	1	Spring 1, Fall 1

Subjects	Details	Credit	Term
Climate Change: Challenges and Solutions	This course will delve into what the changes in global and regional climate mean for humans and society, and what measures are and will be available as personal and social policy actions. The discussions will utilize scientific journal articles to gain an understanding of what factors have been involved in the past, and will continue to influence changes in climate. Further students will use reading assignments to recognize what potential developments and outcomes society will face in the future, and the class will use discussions, debates and presentations to explore what solutions are viable, socially, economically and politically.	1	Spring 2, Fall 2
Peace Movements and Non-Violence	This course will explore several successful peace movements of the 20th century, including those led by Mohandas Gandhi and Rev. Dr. Martin Luther King, Jr. We will begin with explore how and where these groups encountered failures, and how they managed to achieve their successful accomplishments. Further the class will look at similarities and differences in modern social movements, and whether or not strategies that worked in the past can be implemented in current situations for peaceful solutions. The students' ideas and input will be of elevated importance in progressing class discussions regarding assigned readings.	1	Spring 1, Fall 1
Food, Water, and Energy Resource Policies: Japan, Asia and Beyond	As human population grows exponentially nearing 7.5 billion with projections of 9 billion by 2025, it is increasing important for our global society to communicate about how we can best manage our basic needs resources. Water, food, and energy are necessarily interrelated regarding how use of one will impact the others. This course will explore ideas in sustainability that will be useful in managing the use of these resources across national boundaries, in our current time of increasing global interaction. Students will be expected to participate in the class through discussions as well as some basic student-led research.	1	Spring 2, Fall 2
Scientific and Technological Literacy for Environmental Problems Solving	In this course, students will learn what science and technology could contribute to tackle global (environmental) challenges and how scientific and technological concepts and methods can be applied to environmental problems solving. The course will allow students to learn quantitative aspects of environmental problems using simple quantitative methods. Students will also become knowledgeable about the complexities of current global challenges, environmental problems in particular, so that they will feel less intimidated when discussing scientific issues or participating in the science and technology debate.	1	Spring 2, Fall 2
International Collaboration in Science	The global issues we face, such as water security; climate change and biodiversity, are more complex than ever and require multidisciplinary and multistakeholder approach in dealing with them. Therefore, there has been a significant increase in international scientific collaboration. This course will address international and regional collaborations in science. Students will know who are involved in what international scientific collaboration, drivers of the collaboration, and their current status. The course will also introduce Japan's science and technology culture, and help students understand the situation of Japan's scientific research, community and industry.	1	Spring 1, Fall 1
Sustainable Energy Technology and Policy	The course is designed to raise awareness of issues involved in the use of energy resources for its equitable, optimal and sustainable development. The subjects cover a broad range of sustainable energy issues including renewable energy technology and policy, gender and energy equity, energy-related environmental and social issues such as Climate Change impacts and threats, and energy-water-food nexus. The course will also discuss how Japan's energy mix has been determined over years.	1	Spring 1, Fall 1
Music and Humanity	When humans gather and live in a community, the use of, and the appreciation of sound is naturally involved. Sound flows continuously into our ears and is extremely wide reaching in any society. As music directly touches human sentiment in a way beyond visual and linguistic boundaries, people tend to embrace a sense of ownership that "music is mine". In this lecture, I will introduce the multiple aspects and diversity of the world of music that is ubiquitous in human society, through which we shall think together what is humanity. In the first series, examples from ethnic, classical, popular, jazz, and educational music will be introduced, with the aims of cultivating students' capacity in aural discrimination and cultural receptivity.	1	Spring 1, Fall 1
Southeast Asia	Southeast Asian countries provide different scenarios of multiculturalism shaped by the geopolitical history of the region. Taking Malaysia, Singapore, Indonesia and Thailand as examples, this course discusses intriguing issues related to multiculturalism from different aspects, which covers the general setting of a country, the political situation, education and cultural policy and practice. The present series will focus on cases in Malaysia and Singapore.	1	Spring 2, Fall 2
Music and Language in the Malay Word	A language represents the thinking pattern of a people. When words are placed on intonation and rhythm and become a form of share memory, a tradition is born. By examining the use of music and language, the ethos of a society or a people could be revealed. Malay has been the lingua franca in Southeast Asia. This lecture intends to provide a taste of the Malay world by introducing the characters of Malay language, together with its poem, folksongs, popular songs as well as the related music and environmental sound. The first of the series will focus on the form of Malay words and its poetic patterns.	1	Spring 2
The Making of Popular Music	Knowledge is sometimes gained effectively by engaging oneself in the act of creating. Popular music, a symbol of popular culture, is a genre that express one's feeling using words and music, and with freedom by means of non-conformism. The aim of this lecture is to provide a experiential platform for students, who have been living their life in the world of scientific language and social regulations, to discover the phenomenological aspect of their experience through making of popular song or music of their own. Emphasis is placed not on the presence of prior learning experience in music and musical level, but on the extent to which one discover about self, humanity and society through the process of engagement in creative behavior.	1	Spring 1, Fall 2



Subjects	Details	Credit	Term
Introduction to Cultures and Societies of the World	This course will explore fundamental topics in both classic and contemporary anthropological literature. There will be some lectures, occasional talks by visiting speakers, some films and slides and a substantial amount of time will be spent in discussion in small groups. Details about how these groups work will emerge gradually, sometimes through experience. Students will engage in individual research projects which will be carried out throughout the semester using ethnographic methods. The topics and themes for the weeks are listed below. Reading is available in the book list, in other books in the library, and further material will be distributed from time to time.	1	Spring 1, Fall 1
Peoples and Cultures of the Modern Middle East	Popular media tends to present the area known as the Middle East as being rife with issues such as political conflict, violence and sectarianism, however there are rich histories and complex social relations underlying the contemporary situations in this diverse area. This class will examine issues such as history, colonialism, religion, political economy and culture to help students develop an understanding of the modern history and unfolding of current events in the region. Concentrating primarily on anthropological literature the class will look at critical issues and topics pertaining to culture, the emergence of various forms of political power in particular contexts, the role of symbols, rituals and ideologies in legitimizing and contesting power, the nature of conflict and violence, the establishment and perpetuation of social inequality, and the character of the modern state and its relations with civil society.	1	Spring 2, Fall 2
Visual Culture	This course is designed to explore how the visual can be used as a tool for anthropological analysis and to examine changes in ethnographic films and their impacts on society through the twentieth century and today. With a focus on old and new media such as photography, film, computer technology and the Internet, the class will enable students to conceptualize how visual communications transmit knowledge about the world and how visual representations convey social values, customs and actions. Students will have the opportunity to engage in their own photo essay or video documentary projects.	1	Spring 1, Fall 1
Violence, Peace, and Conflict	Violence and conflict take on many forms in all societies. Violent exclusions based on ethnicity, gender, sexual orientation and religion are paramount to many conflicts present in the world today. This course will address violence in the context of anthropological theory and will draw on examples from ethnographic research on a range of topics such as tribal conflict, modern warfare, political violence and terrorism. Students will study violence as a phenomena ever present in our histories and our daily lives and also look at subjects such as trauma, social suffering and recovery.	1	Spring 2, Fall 2
Great Figures in Japanese History	This course will examine the importance of famous Japanese historical figures in shaping the course of history. From the semi-mythical heroes of the Gempei War to the three great nobles of the Meiji restoration, students will critically evaluate the role of the individual in Japanese history across a number of different eras. Students will show historiographical literacy as they assess different historical interpretations of key figures and develop their own theories.	1	Spring 1, Fall 2
Key Moments in World History	The course will explore some of the key moments in world history and the changing interpretations of these events. Students will develop critical thinking and research skills as they examine a variety of moments that have shaped the course of history. Classes will incorporate a mixture of lectures, discussions and debates.	1	Spring 1, Fall 1
God, Guns and Silver: Western Perspectives of Feudal Japan	This course will examine the first-hand accounts of the earliest Western travellers to Japan, starting in the mid-sixteenth century. Students will review the personal logs of the Portuguese missionaries and English merchants who arrived in feudal Japan with an emphasis on their meaning and context. This course has a considerable linguistic component supplemented by historical information about feudal Japan and the contrasts between the two cultures.	1	Spring 2, Fall 2

※ Spring 1: April - June (4月 - 6月)

Spring 2: June - August (6月 - 8月)

Fall1: September - November (9月 - 11月)

Fall2: November - February (11月 - 2月)

Students cannot take the same title twice. 同じ授業科目を2回履修することはできません。



# Japanese Language and Japanese Studies Courses 日本語・日本事情科目

The list below is for the year 2016. Classes in 2017 subject to addition/change.  
2016年度の実績です。2017年度の開講科目は追加・変更になる場合があります。

## Spring Term

Subject	Class Theme	Credit
Japanese A-1a	Advanced Oral Expressions II	1
Japanese A-1b	Practical Writing II	1
Japanese A-2b	Academic Writing	1
Japanese B-1a	Advanced Listening Comprehension & Vocabulary II	1
Japanese B-1b	Advanced Grammar A II	1
Japanese C-1a	Advanced Grammar B II	1
Japanese D-1a	Advanced Reading A II	1
Japanese D-1b	Advanced Reading B II	1
Japanese IV-1a	Upper-Intermediate Comprehensive Japanese	1
Japanese IV-1b		1
Japanese IV-1c		1
Japanese IV-1k		1
Japanese IV-1d	Upper-Intermediate Grammar & Expressions II	1
Japanese IV-1e	Upper-Intermediate <i>Kanji</i> & vocabulary II	1
Japanese IV-1f	Upper-Intermediate Reading II	1
Japanese IV-1h	Advanced Comprehensive Japanese II	1
Japanese IV-1i		1
Japanese III-1a	Intermediate Comprehensive Japanese B	1
Japanese III-1b		1
Japanese III-1c		1
Japanese III-1d		1
Japanese III-1e		1
Japanese III-1g		1
Japanese III-1h	Intermediate Grammar & Expressions II	1
Japanese III-1i	Intermediate Conversation II	1
Japanese III-1j	Intermediate Reading II	1
Japanese III-1k	Pronunciation	1
Japanese II-1a	Intermediate Comprehensive Japanese A	1
Japanese II-1b		1
Japanese II-1c		1
Japanese II-1d		1
Japanese II-1e		1
Japanese I-1a	Lower-Intermediate Comprehensive Japanese	1
Japanese I-1b		1
Japanese I-1c	Lower-Intermediate Grammar & Expressions	1
Japanese I-1d	Lower-Intermediate <i>Kanji</i> & Vocabulary	1
Japanese Studies A	Science and Technology in Japan I	2
Japanese Studies C	Japanese Society and Culture I	2

## 春学期(前期)

科目名	授業テーマ名	単位数
日本語A-1a	上級口頭表現II	1
日本語A-1b	実用文章表現	1
日本語A-2b	上級レポート作成	1
日本語B-1a	上級聴解・語彙II	1
日本語B-1b	上級文法A II	1
日本語C-1a	上級文法B II	1
日本語D-1a	上級読解A II	1
日本語D-1b	上級読解B II	1
日本語IV-1a	中上級総合	1
日本語IV-1b		1
日本語IV-1c		1
日本語IV-1k		1
日本語IV-1d	中上級文法・表現 II	1
日本語IV-1e	中上級漢字・語彙 II	1
日本語IV-1f	中上級読解 II	1
日本語IV-1h	上級総合II	1
日本語IV-1i		1
日本語III-1a	中級総合B	1
日本語III-1b		1
日本語III-1c		1
日本語III-1d		1
日本語III-1e		1
日本語III-1g		1
日本語III-1h	中級文法・表現 II	1
日本語III-1i	中級会話 II	1
日本語III-1j	中級読解 II	1
日本語III-1k	発音	1
日本語II-1a	中級総合A	1
日本語II-1b		1
日本語II-1c		1
日本語II-1d		1
日本語II-1e		1
日本語I-1a	初中級総合	1
日本語I-1b		1
日本語I-1c	初中級文法・表現	1
日本語I-1d	初中級漢字・語彙	1
日本事情 A	日本の科学技術 I	2
日本事情 C	日本の社会と文化 I	2



## Fall Term

Subject	Class Theme	Credit
Japanese A-1b	Practical Writing	1
Japanese A-2a	Advanced Oral Expressions I	1
Japanese A-1b	Advanced Writing I	1
Japanese B-2a	Advanced Listening Comprehension & Vocabulary I	1
Japanese B-2b	Advanced Grammar A I	1
Japanese C-2a	Advanced Grammar B I	1
Japanese D-2a	Advanced Reading A I	1
Japanese D-2b	Advanced Reading B I	1
Japanese IV-2a	Upper-Intermediate Comprehensive Japanese	1
Japanese IV-2b		1
Japanese IV-2c		1
Japanese IV-2j		1
Japanese IV-2d	Upper-Intermediate Grammar & Expressions I	1
Japanese IV-2e	Upper-Intermediate <i>Kanji</i> & vocabulary I	1
Japanese IV-2f	Upper-Intermediate Reading I	1
Japanese IV-2h	Advanced Comprehensive Japanese I	1
Japanese IV-2i		1
Japanese III-2a	Intermediate Comprehensive Japanese B	1
Japanese III-2b		1
Japanese III-2c		1
Japanese III-2d		1
Japanese III-2e		1
Japanese III-2f	Intermediate Academic Writing	1
Japanese III-2g	Intermediate <i>Kanji</i> & vocabulary I	1
Japanese III-2h	Intermediate Grammar & Expressions I	1
Japanese III-2i	Intermediate Conversation I	1
Japanese III-2j	Intermediate Reading I	1
Japanese II-2a	Intermediate Comprehensive Japanese A	1
Japanese II-2b		1
Japanese II-2c		1
Japanese II-2d		1
Japanese II-2e		1
Japanese I-2a	Lower-Intermediate Comprehensive Japanese	1
Japanese I-2b		1
Japanese I-2c	Lower-Intermediate Grammar & Expressions	1
Japanese I-2d	Lower-Intermediate <i>Kanji</i> & Vocabulary	1
Japanese Studies B	Science and Technology in Japan II	2
Japanese Studies D	Japanese Society and Culture II	2

\*"Comprehensive Japanese" includes speaking, listening, writing and reading.

\*\*Students are required to take the Japanese Language Placement Test before attending Japanese language classes.

## 秋学期(後期)

科目名	授業テーマ名	単位数
日本語A-1b	実用文章表現	1
日本語A-2a	上級口頭表現 I	1
日本語A-2b	上級レポート作成法	1
日本語B-2a	上級聴解・語彙 I	1
日本語B-2b	上級文法A I	1
日本語C-2a	上級文法B I	1
日本語D-2a	上級読解A I	1
日本語D-2b	上級読解B I	1
日本語IV-2a	中上級総合	1
日本語IV-2b		1
日本語IV-2c		1
日本語IV-2j		1
日本語IV-2d	中上級文法・表現 I	1
日本語IV-2e	中上級漢字・語彙 I	1
日本語IV-2f	中上級読解 I	1
日本語IV-2h	上級総合 I	1
日本語IV-2i		1
日本語III-2a	中級総合B	1
日本語III-2b		1
日本語III-2c		1
日本語III-2d		1
日本語III-2e		1
日本語III-2f	中級作文	1
日本語III-2g	中級漢字・語彙 I	1
日本語III-2h	中級文法・表現 I	1
日本語III-2i	中級会話 I	1
日本語III-2j	中級読解 I	1
日本語II-2a	中級総合A	1
日本語II-2b		1
日本語II-2c		1
日本語II-2d		1
日本語II-2e		1
日本語I-2a	初中級総合	1
日本語I-2b		1
日本語I-2c	初中級文法・表現	1
日本語I-2d	初中級漢字・語彙	1
日本事情 B	日本の科学技術II	2
日本事情 D	日本の社会と文化II	2

\*総合にはスピーキング、リスニング、ライティング、リーディングを含みます。

\*\*日本語クラスを受講する前には、日本語プレースメントテストを受けなければなりません。

# Campus Life キャンパスライフ

Since a variety of events are held throughout year in and out of the university, you can spend a fulfilling life in Kumamoto University.  
年間を通して大学の内外で様々なイベントがあり、充実した大学生活を送ることができます。

**9** Late September  
**Fall Term Starts**  
9月下旬：秋学期開始

**10** Late September to Mid October  
**Registration for Classes**  
9月下旬～10月中旬：秋学期履修登録

**11** November 1  
**Anniversary of the Founding of Kumamoto University**  
11月1日：開学記念日

Around the time of Anniversary of the Founding of Kumamoto University  
**University Festival**  
開学記念日前後：大学祭

**12** Late December to Early January  
**Winter Vacation**  
12月下旬～1月上旬：冬季休業

**1** Late January to Early February  
**Final Exams**  
1月下旬～2月上旬：秋学期定期試験

**2** Late February  
**Closing Ceremony**  
2月下旬：短期留学プログラム閉講式

**4** Early April to Mid April  
**Registration for Classes**  
4月上旬～4月中旬：春学期履修登録

**7** Late July to early August  
**Final Exams**  
7月下旬～8月上旬：春学期定期試験

**8** Early August  
**Closing Ceremony**  
8月上旬：短期留学プログラム閉講式

**9** Early August to Late September  
**Summer Vacation**  
8月上旬～9月下旬：夏季休業

その他、ウェルカムパーティ等が催されます。

Also, welcome parties and other events are held for the international students.



*The Health Care Center*



*College of Cross-Cultural and Multidisciplinary Studies*



*Library*

## Support System

### Tutor System

There is a tutor system in place to help international students adjust to study and life in Japan.

### Counseling

Students are welcome to seek counseling from the faculty of the College of Cross-Cultural and Multidisciplinary Studies and the International Student Office staff about any problem, such as academic studies or life in Japan. Counseling in English is available.

### Health Consultations

The Health Center staff offers health consultations for all students. They can give advice on how to cope mentally and physically with life in Japan and problems that may arise due to such things as not being able to adjust to life and food in Japan. They also offer basic medical treatments for minor illnesses and injuries. In addition, specialty physicians are also available for mental health consultations.

## Class Timetable

Classes are held from Monday through Friday. There are no classes on Saturdays, Sundays.

The timetable for classes is as follows:

1 <sup>st</sup> period 8:40-10:10	2 <sup>nd</sup> period 10:20-11:50
3 <sup>rd</sup> period 12:50-14:20	4 <sup>th</sup> period 14:30-16:00
5 <sup>th</sup> period 16:10-17:40	

### ■生活支援

#### チューター制度

留学生の学習・日常生活を支援するためにチューターをつける制度があります。

#### 生活相談

学業や生活のことなど、留学生のいろいろな悩みや問題についてグローバル教育カレッジ教員および国際教育課スタッフなどに気軽に相談することができます。また、英語による相談もできます。

#### 健康相談

保健センターでは留学生の健康相談を受け付けています。慣れない日本での生活や食事などで心や体のバランスを崩さないようにアドバイスをしたり、軽い病気や怪我をしたりした場合には簡単な治療も行います。また、心の問題についても専門の医師が相談を受け付けています。

### ■授業時間割

授業は月曜日から金曜日まで行われ、土曜日と日曜日には授業はありません。

授業時間は次のとおりです。

1限目	8:40~10:10
2限目	10:20~11:50
3限目	12:50~14:20
4限目	14:30~16:00
5時目	16:10~17:40

## Extracurricular Activities



Kumamoto University offers various activities for international students to experience Japanese culture. In addition, a two-day overnight study trip is offered each year, which provides students an opportunity to deepen their understanding of Japanese tradition, history, nature and science technology.

International students can participate in such sport clubs as baseball, soccer, basketball, judo and kendo, as well as orchestra, chorus, drama and calligraphy clubs. In addition, Japanese cultural events organized by volunteer groups also offer chances to participate.

### ■課外活動等について

熊本大学では日本の文化に直接触れることができるよう、さまざまな活動を用意しているほか、旅行を通して日本の文化や歴史、自然に対する深い理解を得るために、1年に1回、1泊2日の留学生実地研修旅行を行っています。

課外活動では、野球部、サッカー部、バスケットボール部、柔道部、剣道部などの体育会系サークルのほか、オーケストラ部、合唱部、演劇部や書道部等の文化系サークルが活発に活動しています。その他、ボランティアサークルによる日本文化体験イベントへの参加もすることができます。



## Accommodation

Students who enroll in Kumamoto University through the Kumamoto University Short-Term Exchange Program are given priority for accommodation in the Kumamoto University International House, the dormitory for international students that houses over 200 international students. Located about 1.5km east of the campus, it takes about 10 minutes by bicycle from the International House to the university.

### Room type / Shared room

One unit consists of 4 private rooms, and a shared living room, kitchen and bathroom.

### Rent: 16,500 yen/month

(Including utilities and expenses for common facilities)

Residents must deposit 8,000 yen when they move in, and about 10,000 yen annually for bedding or Futon rental service. Residents who wish to have their own internet connection in their rooms must sign up with their choice of internet provider for themselves. It costs 2,268 yen/month and 2,160 yen for application.

### Facilities and Equipment

Air conditioner, bed, refrigerator, IH cooking heater, microwave oven, desk, e.t.c...

### ■宿舎について

熊本大学短期留学制度により入学する学生は、熊本大学国際交流会館へ優先的に入居することができます。キャンパスから東に1.5km離れたところに、留学生のための寮として、「熊本大学国際交流会館」があり、200人以上の留学生が住んでいます。宿舎から大学まで自転車で10分程度です。

### 部屋タイプ/ルームシェアタイプ

1ユニットには、4つの個室と共有の居間、キッチン、バスルームがあります。

### 料金/月額16,500円

※水道・光熱・共益費を含む

入居時には預託金として別途8,000円、ふとんリース代として、約10,000円/年が必要です。また、インターネットは個別契約となっており、利用する場合には2,268円/月と申込料2,160円が必要です。

### 設備・備品

エアコン・ベッド・冷蔵庫・IHクッキングヒーター・電子レンジ・机等



*Student Dormitory, International House*

# Typical day of a student

# 学生の日



武 佳  
ブ カ  
(China / 中国)



## On a week-day 平日

- Wake up 起床 7:30
- Get ready & eat breakfast 準備&朝食 8:00
- Leave for university 登校 8:30
- Library 図書館へ 9:00
- Japanese class 10:20  
日本語の授業
- Lunch time 11:50  
昼食
- Class 14:30  
授業
- Go back to International House 17:00  
寮へ戻る
- Dinner 18:30  
夕食
- Study time 20:00  
自習時間
- Relax time 22:00  
リラックスタイム
- Go to bed 23:00  
就寝

## On a holiday 週末

- 9:00 Wake up 起床
- 9:30 Laundry 洗濯など
- 11:00 Late breakfast and early lunch  
ランチ
- 12:00 Movie time  
映画鑑賞
- 15:00 Doing sports and shopping time  
スポーツや買い物など
- 20:00 Reading time  
読書
- 23:00 Go to bed  
就寝



## On a week-day 平日

- Wake up & morning praying 起床、礼拝 4:45
- Eat breakfast & prepare for university 6:30  
朝食、準備
- Going to university 大学へ 8:00
- Japanese class 日本語の授業 8:40
- Lunch time + Going to mosque for praying 11:50  
昼食、礼拝のためモスクへ
- Class, or if not self study in library 12:50  
授業、または図書館で自習
- Go back to International House 16:00  
国際交流会館(寮)へ戻る
- Cooking for dinner 夕食の準備 16:30
- Dinner 夕食 18:00
- Study time / Homework 19:30  
自習時間、宿題
- Relax time リラックスタイム 22:00
- Go to bed 23:00  
就寝

## On a holiday 週末

- 5:00 Wake up & morning praying  
起床、礼拝
- 6:30 Eat breakfast 朝食
- 7:00 Cooking for my lunch 昼食の準備
- 8:00 Laundry and cleaning my room  
洗濯、掃除など
- 10:30 Part time job as English teacher  
for Japanese children  
アルバイト(子どもたちに英語を教える)
- 12:30 Explore Kumamoto and Playing with my  
Japanese friends (baseball, basketball, hang out, etc)  
熊本散策、友人と過ごす(スポーツなど)
- 14:30 Late lunch and shopping in supermarket  
昼食、スーパーで買い物
- 16:30 Volunteer club  
ボランティアクラブへの参加
- 18:30 Dinner together with friends  
友人と夕食
- 19:30 Meets friends and spends time with friends  
(shopping together in the city, karaoke, or watching movies)  
友人と過ごす(買い物、カラオケ、映画など)
- 22:00 Study time / Homework  
自習時間、宿題
- 1:00 Go to bed  
就寝



Arbi Surya Satria Ridwan  
アルビ スルヤ サトリア リドワン  
(Indonesia / インドネシア)



## Q.1 How is your life in Kumamoto?

熊本での生活はどうですか？

### A.1

I like it here, because it is not as busy and hectic as in a big city like Tokyo. Also, Kumamoto is surrounded by so much wonderful nature.

熊本での生活は東京ほどいそがしくなくて、目まぐるしくないとこが好みます。そして、豊かな自然に囲まれているところも好みます。

Kumamoto is a wonderful place to live filled with nice people and a great climate. The city is just the perfect size to have your own journey – not too big, not too small. To get around I rode a bicycle, took the tram and the train. Moreover, Kumamoto is like a hub to travel around Kyushu. Kumamoto does not only offer convenience while traveling but also comfort. While living there I received many recommendations from local residents – They are very generous. The climate is fine and is not too extreme in any season. I would like to say Kumamoto is an excellent place for students to experience studying abroad.

熊本は親切な人たちと過ごしやすい気候に恵まれた素晴らしい場所です。熊本は小さすぎず、大きすぎず、出かけるのにちょうどよい大きさで、自転車や市電（トラム）、電車で回れます。また、熊本は九州旅行するためのハブのようなところです。熊本は旅行の利便性だけでなく、心地よい生活も提供してくれます。熊本に住んでいる間、地域の人たちからたくさんのお勧めを教えてもらいました。彼らは本当に思いやりがあります。熊本は、一年中過ごしやすい気候で、留学体験をするためのひとつの素晴らしい場所です。

## Q.2 What do you think about people in Kumamoto?

熊本の人はどうですか？

### A.2

People here aren't as busy as in Tokyo and are very nice, friendly and helpful.

東京に住んでいる人よりゆっくり生活を楽しんでいて、とてもやさしい人だと思います。

They are very kind and friendly. In every place I encountered a local people they greeted me with a smile whether it be at a store, restaurant or a railway station. People always interacted with me and offered me useful advice and recommendations despite my lack of Japanese language skills.

熊本の人たちはとても親切でフレンドリーです。お店でも、レストランでも、駅でも、地域のみなさんは笑顔でわたしに挨拶してくれました。わたしはあまり日本語が話せませんでしたが、地域のみなさんはいつも私を気にかけてくれ、役立つアドバイスやお勧めを教えてくださいました。

## Q.3 Are there any favorite places in the Kumamoto area?

熊本の街で好きな場所は？

### A.3

I have many favorite places to visit in Kumamoto. They include Suizenji park, Ezu Lake, Aso mountain, and Toorichosuji (downtown) but I recommend visiting Kumamon square on the day that Kumamon, their mascot, visits. Kumamon is funny and brilliant! He also converses with the audience and performs dances. He leaves a great impression and smiles on your face.

熊本にはたくさんのお気に入りの場所があります。たとえば、水前寺公園や江津湖、阿蘇山、通町筋。その中でも、くまモンスクエアを訪れることをおすすめします。くまモンはおもしろくて素晴らしいです！くまモンはお客さんと会話して、ダンスを披露します。くまモンは素晴らしい印象と笑顔をおあなたに残してくれるでしょう。

## Q.4 Are there any eating places that you recommend?

熊本でぜひ食べてもらいたい食べ物は何ですか？

### A.4

There are many restaurants in Kumamoto, I want you to try Kumamoto local foods!

レストランがたくさんあります、熊本ならではのものをたくさん食べてほしいです。

Two places I highly recommend are Sawa and Ka-ra-Oh. Their menus are simple but unique! Sawa serves large amounts of food with cheap prices. I can enjoy spaghetti and many side dishes for free. My friends and I always go there to have a good time after class. Afterwards we roll ourselves back to the international house because we are stuffed. Ka-ra-Oh serves simple Karaage bento but it is priceless. Chicken Namban became my addiction.

「沢」と「から王」がとってもおすすめです。メニューはシンプルですが、とてもユニークです。沢は格安でたくさんの料理を出してくれます。スパゲッティや他のサイドメニューを無料で楽しむことができ、放課後によく友達と通いました。食事の後はお腹がいっぱいすぎて転がるように寮に戻りました。から王はシンプルな唐揚げ弁当を出してくれ、そのお弁当は値段に代えがたいものでした。私はチキン南蛮中毒になりました。

## Q.5 How much is your monthly allowance?

月のおこづかいはいくらですか？

### A.5

65,000 ~ 80,000 yen.

65,000 ~ 80,000 円です

## Q.6 Is there anything to take special care of yourself in different climate?

体調管理で気をつけていることは何かありますか？

### A.6

For anybody with a light skin tone, it is very important to use sunscreen. Also, I recommend having something to prevent insect bites or at least something to apply to the skin after being stung.

肌が白い人は日焼け止めを使用することが大切です。また、虫除けのための薬や虫に刺された時の薬も準備しておくことをおすすめします。

In summer, spring or fall, I don't have to wear any special clothes but in winter I need warm jackets, beanies, gloves and sometimes masks. Please make sure that your room heater works. Actually, Kumamoto is not such a cold climate compared to other regions but coming from a tropical country I needed to adapt.

春、夏、秋は特に特別な洋服は必要ありませんでしたが、冬はあたたかいジャケットや帽子、手袋、そして時々マスクも着用していました。部屋のヒーターがちゃんと動くことを確認してください。熊本は他の地域に比べるとそんなに寒くはありませんが、熱帯地方から来た私にとってはその気候に適応する必要がありました。

## Q.7 How do you go to the university?

熊本大学まではどうやって通っていますか？

### A.7

By bike. It only takes about 5 minutes. When I didn't have the bike yet, I walked and it took me about 20 minutes.

自転車でいきます。だいたい5分しかかかりません。自転車をまだ持っていなかった時は、歩いて行きました。20分くらいかかりました。

I always ride the bike back and forth between campus and international house.

Some days if it is raining heavily, I will catch a bus. Train is an option when I have to study at Oe campus.

いつも寮と大学の間は自転車で通いました。もし、強い雨が降ったのであれば、バスを使ったでしょう。大江キャンパスに行くときには電車を使いました。



## Q.8 How is your life in the shared-room dormitory with friends from different countries?

寮での他の国の学生との生活はhowですか？

### A.8

I find it quite interesting when neighbors listen to their countries' traditional music. It is also nice to be able to try some of their food.

他の国の伝統的な音楽を聞いたり色々な食べ物を食べてみたりするのは面白かったです。

It is amazing! At first I thought it would be challenging due to a language barrier. But my roommates are from different cultures who can speak Japanese and English. We helped each other learn other cultures and languages. We shared chores, stories and played many games. We invited many people to our room. It is a happy time for us.

とても素晴らしかったです!最初は言語の壁により他の国の留学生と一緒に暮らすことは大変だと思いましたが、私のルームメイトは日本語も英語も話すことができました。私たちは互いに助け合い、それぞれの文化や言語を学びました。炊事や洗濯などの日常の雑務を一緒にやり、お話をたくさんゲームも一緒に楽しみました。たくさんの友達を私たちの部屋に招き、それは私たちにとって本当にかげがえのない時間でした。

## Q.9 Are there any recommended subjects?

オススメの科目はありますか？

### A.9

They offer many different classes to suit the students' individual needs. To name a few examples, you can take special classes for writing, for listening comprehension and for conversation.

学生のそれぞれの要求に応じる授業を提供しています。例えば、日本語のクラスには作文や読解、会話の授業があります。

## Q.10 What is homework like? How do you study for term tests?

宿題やテスト勉強はどうしていますか？

### A.10

I think that doing the homework as best as you can and constantly revising throughout the semester and not just in the shortly before the test, is the best preparation.

いつも宿題を頑張ったり、学期中にきちんと復習したりするのは期末テストの一番いい準備だと思います。

It depends on the subjects but homework is practical and workable. I frequently spend my time in the library for homework. The place is convenient and comfortable. Providing me sources of knowledge with a studious environment.

科目にもよりますが、宿題にきちんと取り組むことが一番実践的で有効な手段です。宿題をするためによく図書館に行きました。図書館は便利で心地よい空間であり、私に勉強に集中できる環境と知識の情報源をくれました。

## Q.11 Is there any secret for improving Japanese skill?

日本語上達の秘訣は？

### A.11

If you are from a country where you have no *Kanji*, I highly recommend you study them as much as you can. Apart from that I think it is very important to make Japanese friends and talk a lot to them in Japanese.

漢字がない国の人は漢字をたくさん勉強したほうがいいと思います。それ以外では、日本人の友達を作って、日本語で話すのが大事です。

Improve your Japanese skills by travelling by yourself. Through observation of many signs you can remember useful expressions for survive. The more you push yourself challenging situations, the more you are driven to learn. Additionally, Japanese friends are beneficial because they can correct your misunderstandings and teach you many new things.

ひとりで旅行することで。多くのサインを目にすることで、日本で生活するために役立つ表現方法を覚えられます。挑戦が必要な状況に自分自身を追いやることで、もっと多くのことを学ぶ熱意を得られます。その他にも、日本人の友達はとても大切です。彼らは間違いを正してくれますし、新しいことをあなたに教えてくれます。

## Q.12 Where is your favorite cafeteria in Kumamoto University?

What is your favorite item on the menu?

熊本大学の食堂で一番のおすすめはどこですか？何が一番好きですか？

### A.12

Since I like trying new things, I always go for the special offers.

色々な料理を試すのが好きなので、いつもスペシャルオファー（本日のおすすめ）にします。

Cafeteria at North Student Hall Building. A. My favorite item is chicken namban and chicken teriyaki.

北キャンパスの学生食堂です。チキン南蛮とチキンてりやきがお気に入りです。

## Q.13 Do you have anything that you should have prepared before coming to Japan or Kumamoto?

留学前に、事前に準備しておけばよかったと思うこと、思う物がありますか？

### A.13

If needed, it is very important to take care as early as possible of getting financial support for the time while you study here.

もし、留学のための財政支援が必要だったら、できるだけ早くそのための準備したほうがいいです。

Basic Japanese language skills. Even though I don't have any basic skills of Japanese language before I come to Kumamoto, I still enjoy my time there. It would be fabulous if I knew some basic Japanese before I go so that I could understand things easily.

基本的な日本語能力です。私は日本に来る前は全く日本語が分かりませんでしたが、熊本での滞在を楽しめました。もし、日本に来る前に少し日本語を知っていたら、もっといろんなことが簡単に理解できて、もっと素晴らしかったらと思います。



# Campus Area Map

キャンパス周辺マップ



Tatsuda Nature Park



Tatsudaguchi Train Station



Red Gate

International House  
熊本大学学生交流会館

Kumamoto University  
熊本大学



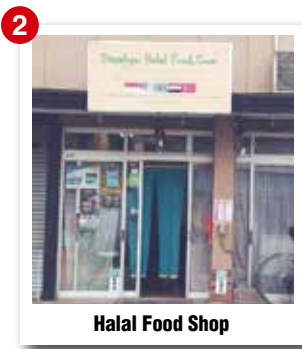
Kokai Market Street



Tokaigakuen-mae Train Station



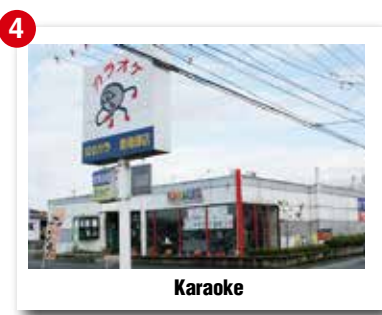
Kokai Market Street



Halal Food Shop



Drug Store



Karaoke

# Life in Kumamoto

## 熊本での生活



*Kumamoto Castle*



### About Kumamoto

Kumamoto University is located in the city of Kumamoto in Kyushu, the southern-most main island of Japan. Kumamoto City has a population of approximately 740,000 and is the second biggest city in Kyushu. By air it takes 90 minutes from Tokyo or 60 minutes from Osaka; by train it takes approximately 40 minutes from Fukuoka City.

### Climate

The weather is generally mild. The weather changes from hot and muggy (25-35°C) in July and August to windy and cold (2-10°C) in January and February. Autumn and spring offer the most comfortable weather. When you get here in October or April, it will be the beautiful seasons and the temperature will be moderate (14-24°C). Therefore you will not need to put on a coat, but rather only a light jacket. Once the winter season comes in late November, you will need some sweaters and a winter coat. Warm clothing is necessary in January and February. We rarely have heavy snow in Kumamoto.

### Sightseeing spots

Local attractions include Kumamoto Castle, one of the oldest and grandest medieval castles in Japan; Kumamoto downtown area, located 10-15 minutes away from Kumamoto University by bicycle and known for a lot of office buildings and shopping streets; the Amakusa Islands, a chain of 120 islands known for their exciting Christian history and plenty of rich nature; and Aso National Park, crowned by the active volcano Mt. Aso, with a world-leading caldera volcano. Because of its proximity to Mt. Aso, the Kumamoto area also has an abundance of natural hot springs. Kumamoto is also well-known in Japan for its delicious drinking water. Because the rainfall that soaks into the ground in the mountains of the Aso region is purified for many years, one can always be able to drink delicious water.

### Transportation

It takes from one and a half hours to two hours for you to go to Tokyo from Kumamoto by airplane. You can get to Kyoto, famous for its historical sights, in two and a half hours by a "shinkansen" bullet train from Fukuoka. Since Japanese railways and bus routes have been expanded throughout the country, you can easily visit other cities in Kyushu, as well as other areas in Japan.

In campus life, many students use a bicycle because of the flat land in Kumamoto and to have easy access to downtown.

### ■熊本について

熊本大学は、日本の最南の主な島である九州の熊本市にあり、熊本市は人口約74万の九州第二の都市です。飛行機で、東京から95分または大阪から65分、新幹線で福岡市から約40分かかります。

### ■気候

一年を通して天気は穏やかですが、7月から8月にかけては蒸し暑く(25-35°C)、1月から2月にかけては冷たい風が吹きます(2-10°C)。秋と春は最も快適で美しい季節で(14-24°C)、コートを着る必要はなく、軽く上着を羽織る程度で充分です。11月の下旬から2月にかけては暖かい衣類が必要です。熊本には、大雪はめったに降りません。

### ■観光スポット

日本で最も古く最も壮大な中世の城である熊本城、大学から自転車で10~15分程度の距離にある熊本市繁華街、120もの島が点在し、クリスチャンの歴史で知られ、自然が豊かな天草諸島、そして、世界有数のカルデラ火山がある阿蘇国立公園などがあります。阿蘇には多くの天然温泉があります。また、熊本市は日本有数の地下水都市であり、水道水のほぼ100%を地下水で賄っています。阿蘇の山肌で浸透した雨水がその裾野で涵養され、何年もかけてから湧き出してくるので、一年中美味しい水を飲むことができます。

### ■交通アクセス

熊本から東京までは飛行機で一時間半~2時間です。また、歴史で有名な京都には、福岡から新幹線で二時間半です。日本は鉄道とバス網が全国の至る所に発達しているため、容易に九州の他の都市や全国の他の地域へ行くことができます。

大学生活では、熊本の平坦な土地と中心街へのアクセスの良さにより、多くの学生が自転車を利用しています。



*Downtown Kumamoto*



*Mt. Aso*



For further information, please contact:

**College of Cross-Cultural and Multidisciplinary Studies  
Kumamoto University**

2-40-1 Kurokami Chuo-Ku, Kumamoto-city 860-8555 Japan

Phone: +81-96-342-2103/2133, Fax: +81-96-342-2130

E-mail: [gji-ryugaku@jimu.kumamoto-u.ac.jp](mailto:gji-ryugaku@jimu.kumamoto-u.ac.jp)

**URL: <http://www.kumamoto-u.ac.jp>**